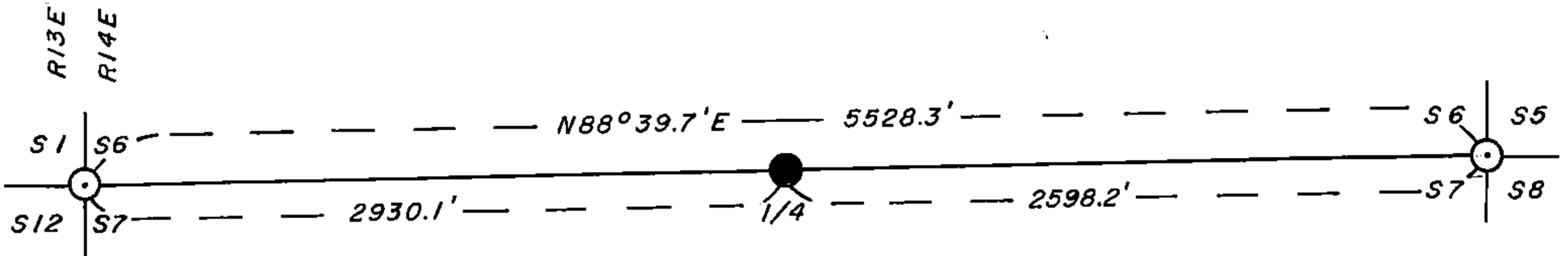


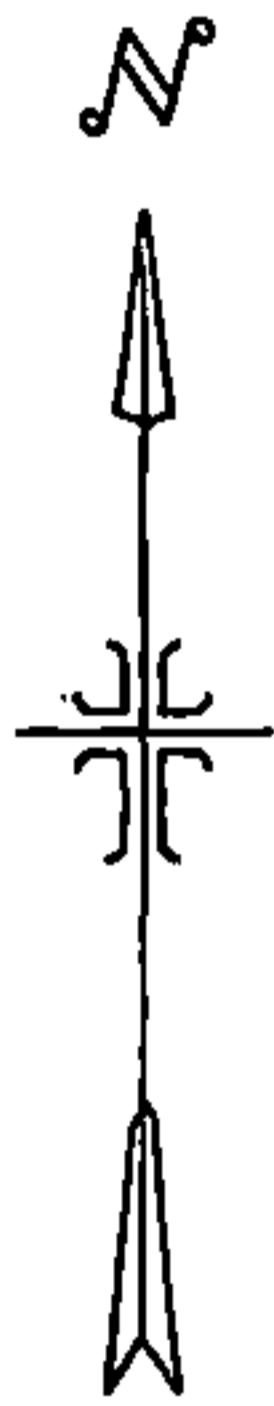
Stock No. 26273

CERTIFIED LAND CORNER RESTORATION CERTIFICATE

BEING THE QUARTER CORNER BETWEEN SECTIONS 6 AND 7,
TOWNSHIP 39 NORTH, RANGE 14 EAST, FOURTH PRINCIPAL MERIDIAN,
COUNTY OF FOREST, STATE OF WISCONSIN



Scale: 1" = 800'



LEGEND

- - 2 1/2 inch diameter aluminum pipe monument, 30 inches long with an aluminum cap stamped to identify the corner.
- ⊙ - Corners monumented and recorded.

SURVEY NOTES

This survey of the line between the southeast section corner and the southwest section corner of Section 6, T39N, R14E, Fourth Principal Meridian was made by the U.S. Department of Agriculture, Forest Service. All bearings are true bearings referenced to solar observations.

CORNERS RECOVERED

1. Section Corner Common to Sections 5,6,7 and 8
Recorded as document number 107231, June 16, 1975.
2. Section Corner Common to Sections 1,6,7, and 12, Ranges 13 and 14 East.
Previously recorded.

CORNER RESTORED

1. Quarter Corner Between Sections 6 and 7.
Restored the quarter corner by single proportion on line between the southeast section corner and the southwest section corner of Section 6.

Corner References:

Spruce	15"	S64°E	13.54 ft.
Spruce	10"	N28°W	29.02 ft.
1 1/4 inch diameter Iron Pipe		S45°53.9'W	30.40 ft.
Steel Sign Post		NE	1.5 ft.

DOCUMENT No.
119752

43914060020

REGISTER'S OFFICE
Forest County, Wis.
Received for record this 12th day
of May A.D. 1981 at
2:30 o'clock P.M. and recorded
in Vol. _____ of CORNER
page E-3 RESTORATION

Eugene Stutzman
Register of Deeds

Stock No. 26273

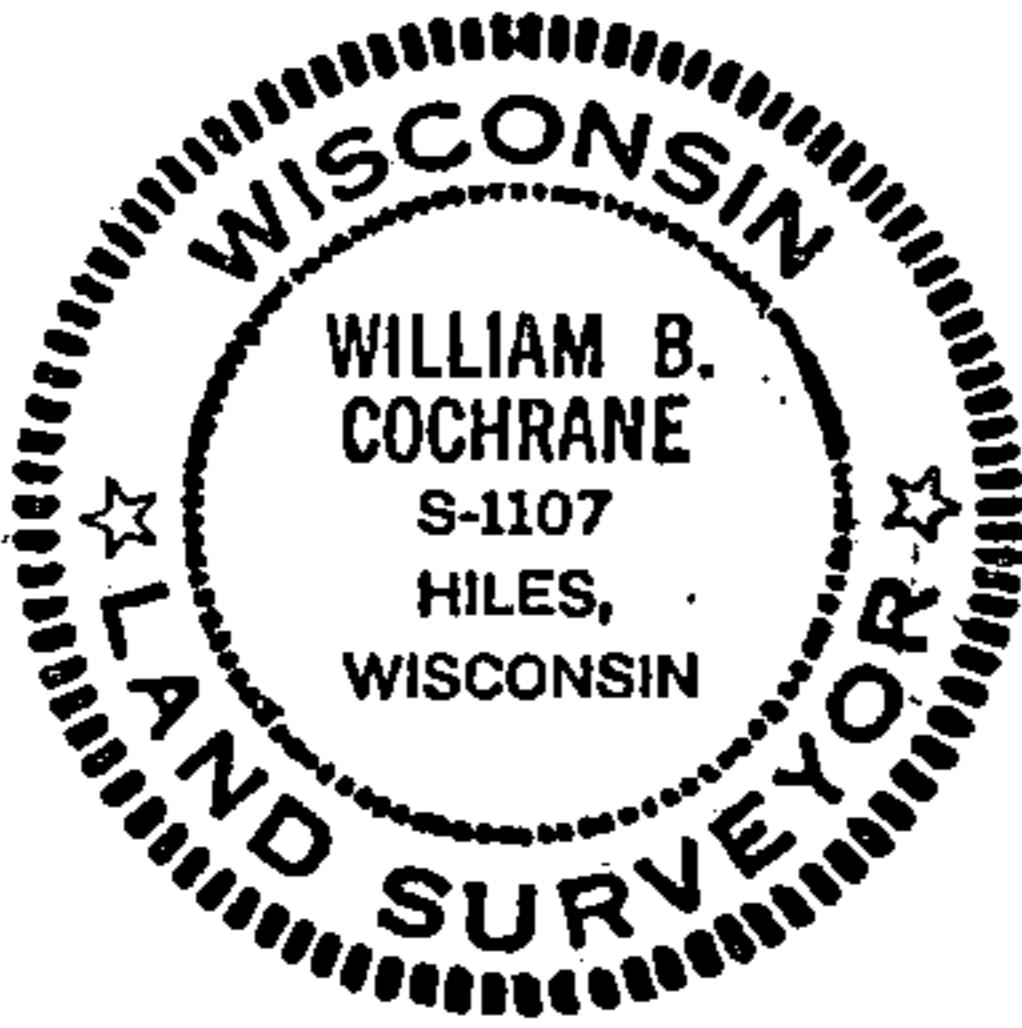
Sheet 2 of 2 (E-3)

SURVEYOR'S AFFIDAVIT

State of Wisconsin)
County of Forest) ss

I, William B. Cochrane, Land Surveyor, U.S. Forest Service and a Registered Land Surveyor in the State of Wisconsin, hereby certify that I have surveyed the line between the southeast section corner and the southwest section corner of Section 6, Township 39 North, Range 14 East, Fourth Principal Meridian, State of Wisconsin.

The plat map and the survey notes are a correct representation of the corners recovered and corners established.



William B. Cochrane
Land Surveyor, U.S. Forest Service
R.L.S. State of Wisconsin
Certificate S-1107

Date of Survey: 1981