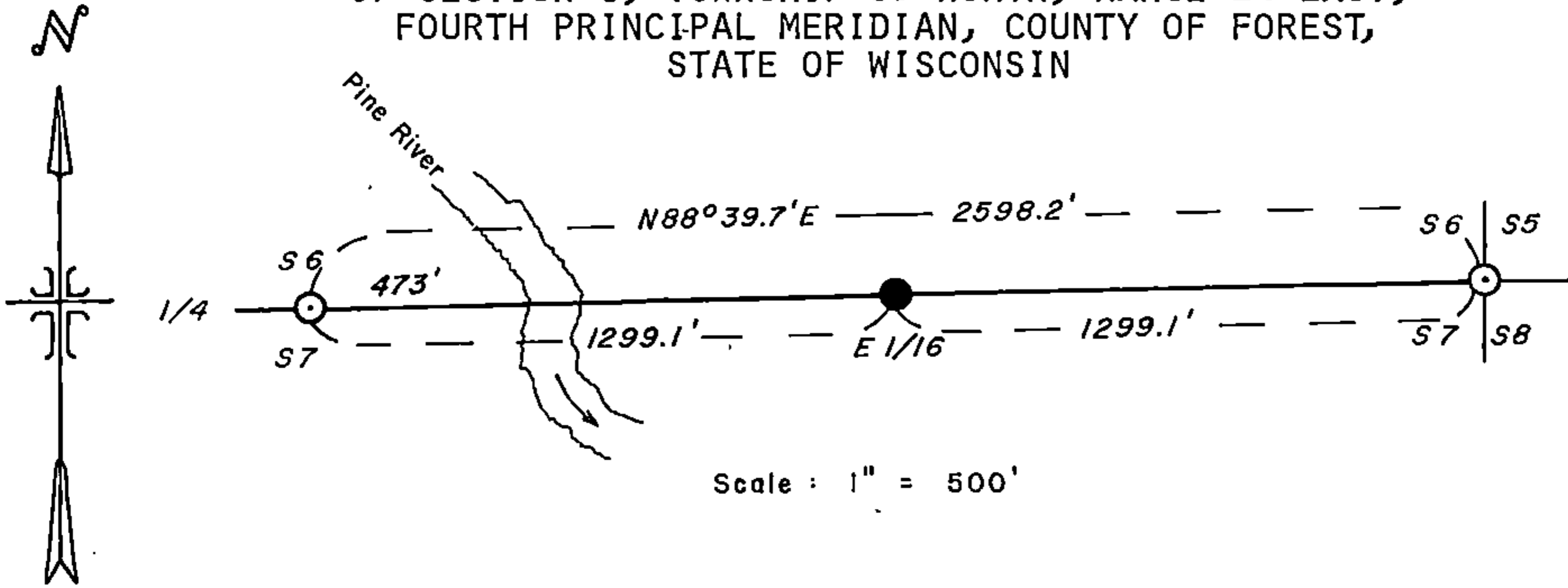


Stock No. 26273

CERTIFIED LAND CORNER RESTORATION CERTIFICATE

BEING THE EAST SIXTEENTH CORNER BETWEEN THE SOUTH QUARTER CORNER AND THE SOUTHEAST SECTION CORNER OF SECTION 6, TOWNSHIP 39 NORTH, RANGE 14 EAST, FOURTH PRINCIPAL MERIDIAN, COUNTY OF FOREST, STATE OF WISCONSIN



LEGEND

- - 2 1/2 inch diameter aluminum pipe monument 30 inches long with an aluminum cap stamped to identify the corner.
- ⊙ - Corners monumented and recorded.

SURVEY NOTES

This survey of the line between the south quarter corner and the southeast section corner of Section 6, T39N, R14E, Fourth Principal Meridian was made by the U.S. Department of Agriculture, Forest Service. All bearings are true bearings referenced to solar observations.

CORNERS RECOVERED

1. Section Corner Common to Sections 5,6,7 and 8.
Recorded as document number 107231, June 16, 1975.
2. Quarter Corner between Sections 6 and 7.
Previously recorded.

CORNER ESTABLISHED

1. East Sixteenth between Sections 6 and 7.
Established the east sixteenth corner at the mid-point and on line between the south quarter and southeast section corner of Section 6.

Corner References:			
Aspen	9"	S10°E	17.66 ft.
Aspen	7"	N70°W	4.48 ft.
Steel Sign Post		NE	0.50 ft.

DOCUMENT NO.
119753

43914060010

REGISTER'S OFFICE }
Forest County, Wis. }
Received for record this 12th day
of May A.D., 1981 at
2:30 o'clock P.M. and recorded
in Vol. _____ of CORNER
page E-4 RESTORATION
Ernest Statingny
Register of Deeds

E
4

Stock No. 26273

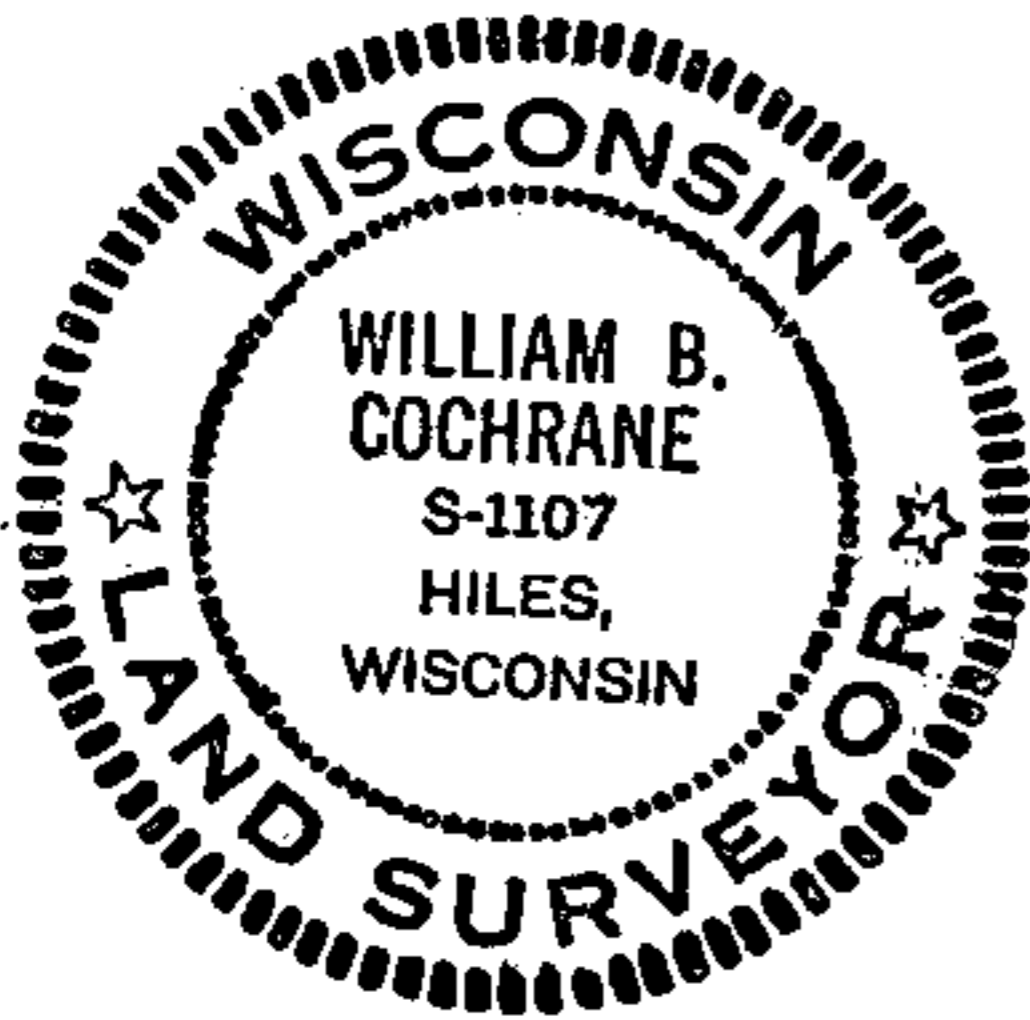
Sheet 2 of 2 (E-4)

SURVEYOR'S AFFIDAVIT

State of Wisconsin)
County of Forest) ss

I, William B. Cochrane, Land Surveyor, U.S. Forest Service and a Registered Land Surveyor in the State of Wisconsin hereby certify that I have surveyed the line between the south quarter corner and the southeast section corner of Section 6, Township 39 North, Range 14 East, Fourth Principal Meridian, State of Wisconsin.

The plat map and the survey notes are a correct representation of the corners recovered, restored and established.



William B. Cochrane
Land Surveyor, U.S. Forest Service
R.L.S. State of Wisconsin
Certificate S-1107

Date of Survey: 1981