

CERTIFIED LAND CORNER RESTORATION

State of Wisconsin }
 County of Forest } ss.

I William B. Cochrane, do hereby certify that on the 23rd day of October, 1974, I found evidence of the Southeast Section corner of Section 6 Township 39 North, Range 14 East, Fourth Principal Meridian, as described hereon; and that from this evidence I established a new monument and accessories as described hereon to perpetuate the original location of this corner:

Description of original monument and accessories and subsequent restorations:

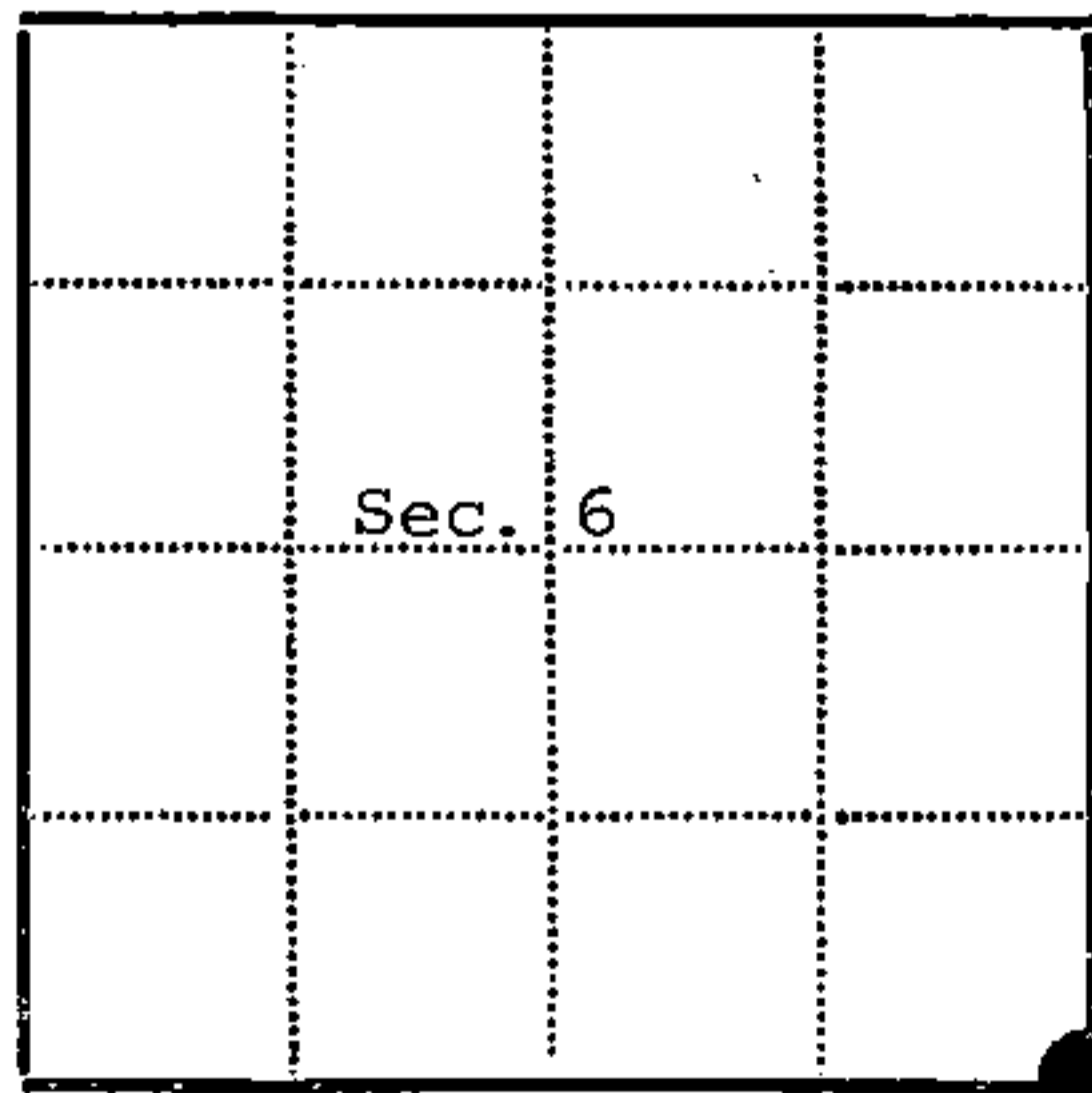
Surveyed in 1865 by Wm. E. Daugherty.
 North between Sections 7 and 8. 80.0 chains set post corner to sections 5, 6, 7 and 8.
 Cedar, 14", S70°E, 22 lks.
 Fir, 7", N22°W, 16 lks.
 23.0 chains east, leave swamp, bears N & S
 18.11 chains West, leave swamp, bears N & S
 35.11 chains West, stream 100 lks. wide, runs South

Description of corner evidence found:

6x6 scribed cedar post. A cedar scribed, 13", bears S29°E, 33 lks.
 A cedar, scribed and fallen, bears S87°W, 31 lks. At S70°E, 22 lks. is a cedar tipout.
 East, 14.0 chains, leave swamp bears N&S
 West, 17.0 chains leave swamp bears N & S
 West, 30.0 chains, River, runs south. North 40.0 chains quarter corner between sections 5 and 6.
 The bearing trees that were found were made by an unknown surveyor about 40 years ago. They were found by Forest Service personnel in 1934.

Description of monument and accessories I established to perpetuate the location of this corner:

I replaced the cedar post with a 2 inch inside diameter, galvanized pipe, 5 feet long, filled with concrete with a brass cap stamped:
 T39N, R14E, S5, S6, S7 and S8, 1975, S-1107. From which the following bear:
 Cedar, 12", N24°E, 39.93 feet.
 Cedar, 13", S32°E, 22.07 feet (found bearing tree)
 Cedar, 12", S50°W, 39.88 feet
 Cedar, 10", N34°W, 36.33 feet
 Set a steel sign post, East of the monument, 0.30 feet



● - Corner monument restored
 □ -

Resident witnesses.....

Dated at Three Lakes, Wisconsin, this 16th day of June, 1975.

Signature William B. Cochrane Title Survey Technician
 (County Surveyor, Registered Land Surveyor, or other duly authorized official)

Surveyors Registration No. S-1107 DOCUMENT NUMBER 107231

Office of Register of Deeds County of Forest

I hereby certify that the within instrument was filed in this office for record on the 16th day of June, 1975, and was filed in Book No. _____ Page No. _____ of County Records.

Signature Eugene Staszny Title Register of Deeds

Township 39 North, Range 14 East, Section 6, Index No. E-5, Page No. _____

43914060000

55

U.S. PUBLIC LAND SURVEY MONUMENT RECORD

Index No. E-5

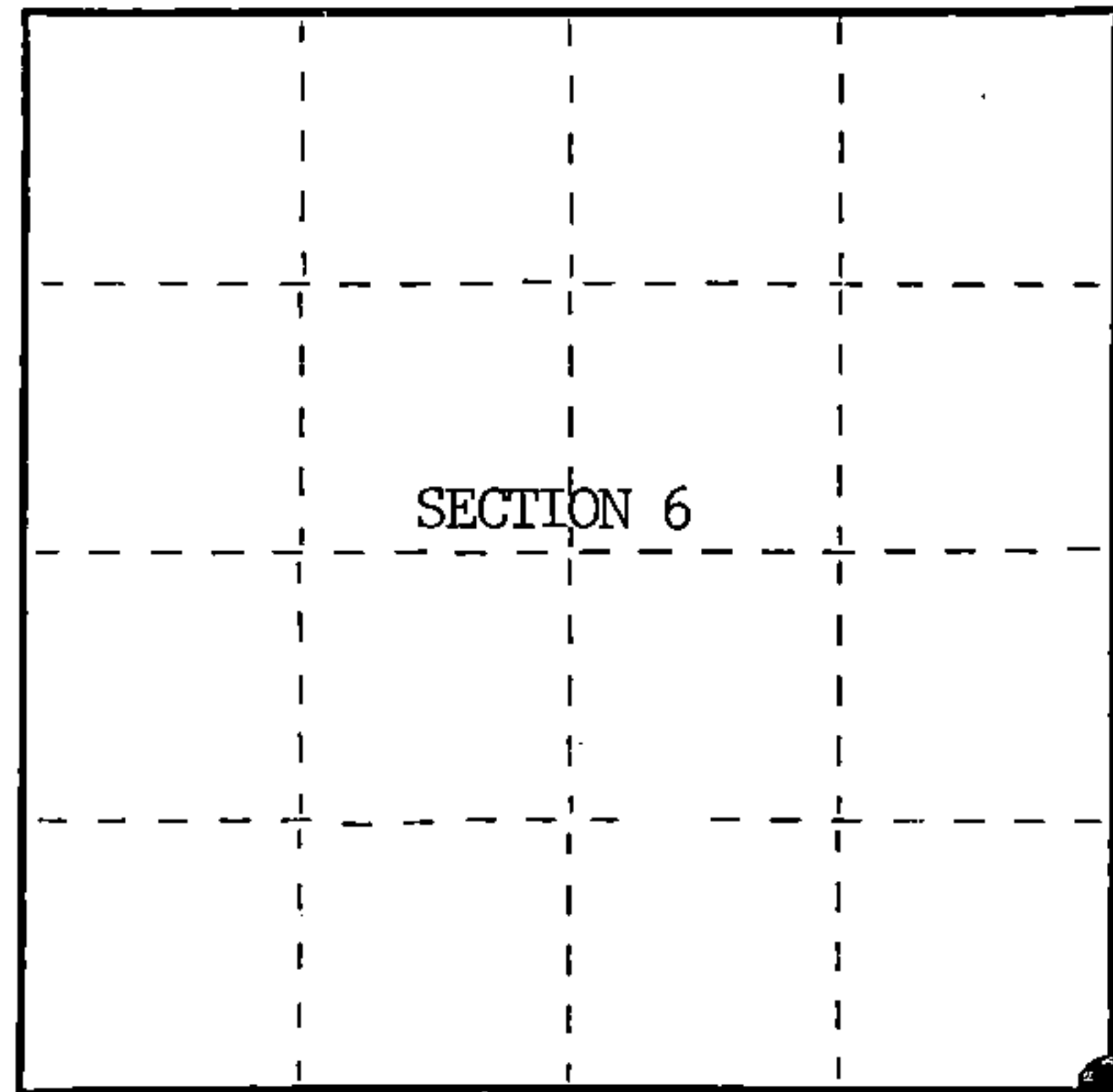
State of Wisconsin } ss.
County of Forest

I, William B. Cochrane, do hereby certify that on the 3rd day of September, 1985, I found evidence of the Southeast Section corner of Section 6 Township 39, North, Range 14 East, Fourth Principal Meridian, as described hereon; and that from this evidence I established a new monument and accessories as described hereon to perpetuate the original location of this corner.

Resident witnesses:

Tony Tillman

State Plane Co-ordinates
N- 263,149.4360
E-2,311,239.5960



○ = Corner monument restored.

History of original corner establishment:

Original Government Survey in 1865 by William E. Daugherty, and Alex McDill.

Corner restored on October 23rd, 1974, by William B. Cochrane, a Registered Land Surveyor with the U.S. Forest Service.

See Certified Land Corner Restoration Certificate #107231, filed in the Registrar of Deeds Office, in the Forest County Courthouse.

Description of corner evidence found:

Found monument as described and in place, from which the following bear;

Cedar	12"	N24°E	39.93 feet
Cedar	13"	S32°E	22.07 feet
Cedar	12"	S50°W	39.88 feet
Cedar	10"	N34°W	36.33 feet
Steel Sign Post		East	0.30 feet

All of the above bearing trees were cut down for the Aerial Photo Project. Description of monument and accessories I established to perpetuate the original location of this corner.

Blazed and scribed the following new bearing trees;

Ash	5"	N12°E	41.71 feet
Ash	6"	S 7°E	45.04 feet
Ash	5"	N86°W	41.06 feet
Ash	5"	N75°E	42.09 feet

Re-set Steel Sign Post NW 2.00 feet

Dated at Hiles, Wis., this 27th day of February, 1986

Signature: William B. Cochrane Title: Land Surveyor Registration No. S-1107
(County Surveyor, Registered Land Surveyor, or other duly authorized official)

Office of Register of Deeds, County of Forest, I hereby certify that the within instrument was filed in this office for record on the 11th day of March, 1987 at 3:30'clock P. M.

Paul Aschenbrenner
(Register of Deeds)

By _____ Deputy

FORM NO. 985-A

H.C. Miller Company

Stock No. 26273

DOCUMENT NUMBER 132325

439 14660000

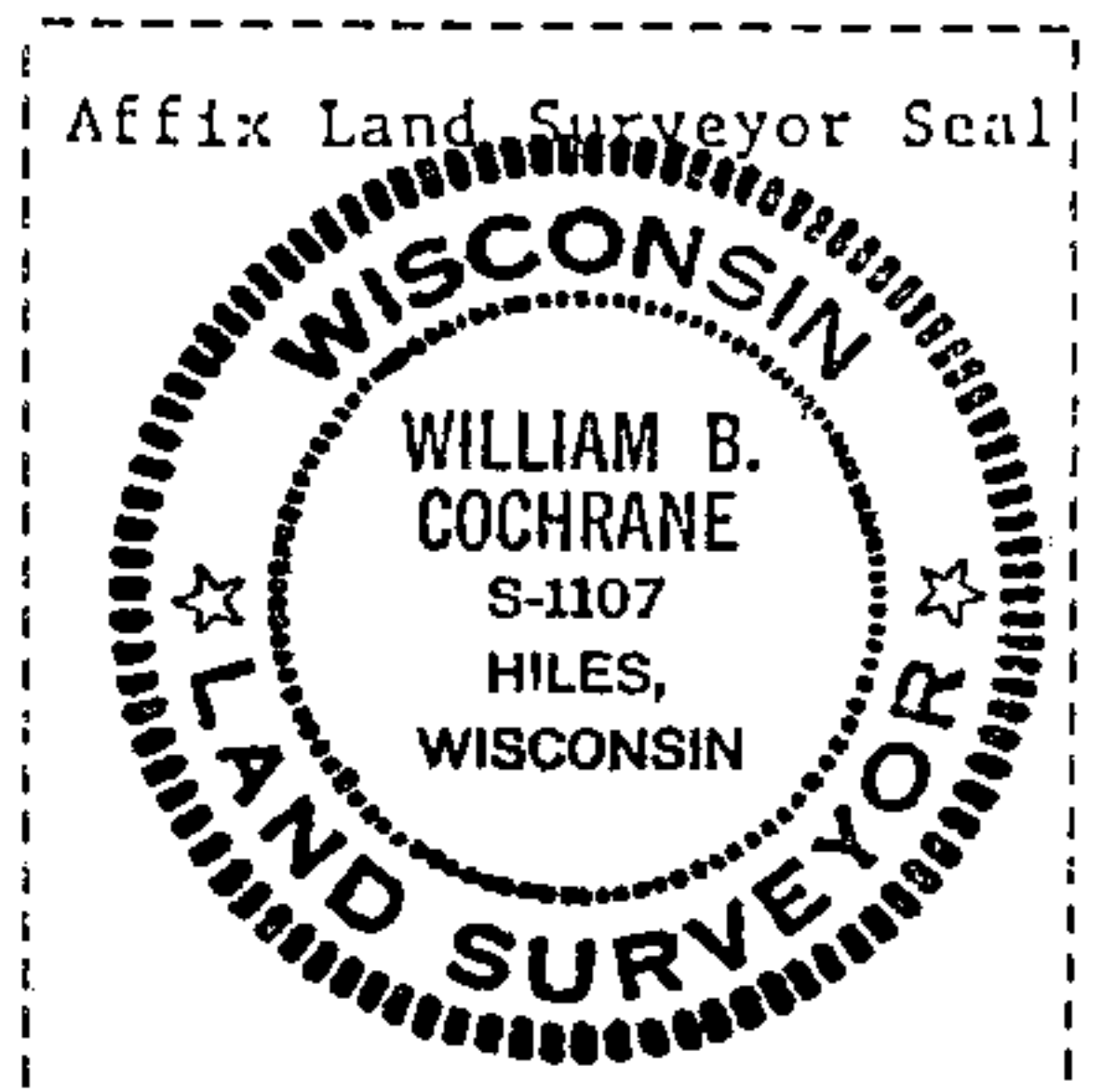
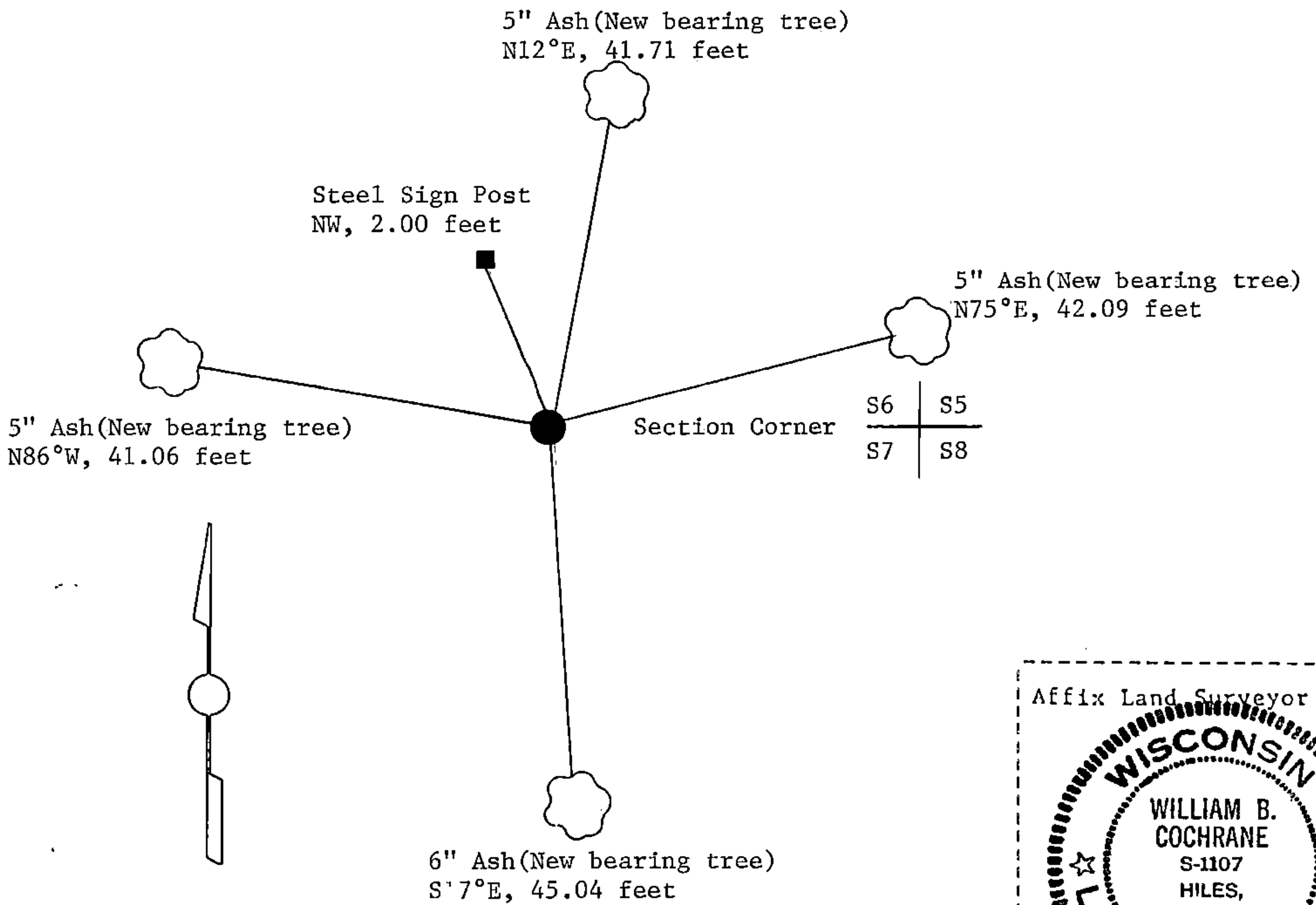
(e) Describe any material discrepancy between the location of the corner as restored or reestablished and the location of that corner as previously restored or reestablished by distance and direction. Show the discrepancy on the plan view drawing under (d), above. Show the distances between the corner as previously restored or reestablished and (1) the corner as restored or reestablished, and (2) to at least 2 of the witness monuments shown on the drawing in (d), above.

See drawing below.

(f) Was the corner restored through acceptance of (1) an obliterated evidence location, or, (2) a found perpetuated location?

Restored through acceptance of a found perpetuated location.

(g&h) Was the corner reestablished through lost corner proportionate methods? If so, show the method, including the directions and distances to other public land survey corners used as evidence or used for proportioning in determining the corner location?



(i) I, William B. Cochrane
(type or print name) certify that the corner location shown on this record was determined by me or under my direction and control and that this U.S. Public Land Survey Monument Record is correct and complete to the best of my knowledge and belief.

William B. Cochrane October 7, 1986
Signature Date

Survey requested by: David Langer 3-9-87
District Ranger Date