

CERTIFIED LAND CORNER RESTORATION

State of Wisconsin

County of Forest

SS.

I William B. Cochrane, do hereby certify that on the 4th day of April, 1975, I found evidence of the Southwest Section corner of Section 31 Township 39 North Range 14 East, Fourth Principal Meridian, as described hereon; and that from this evidence I established a new monument and accessories as described hereon to perpetuate the original location of this corner:

Description of original monument and accessories and subsequent restorations:

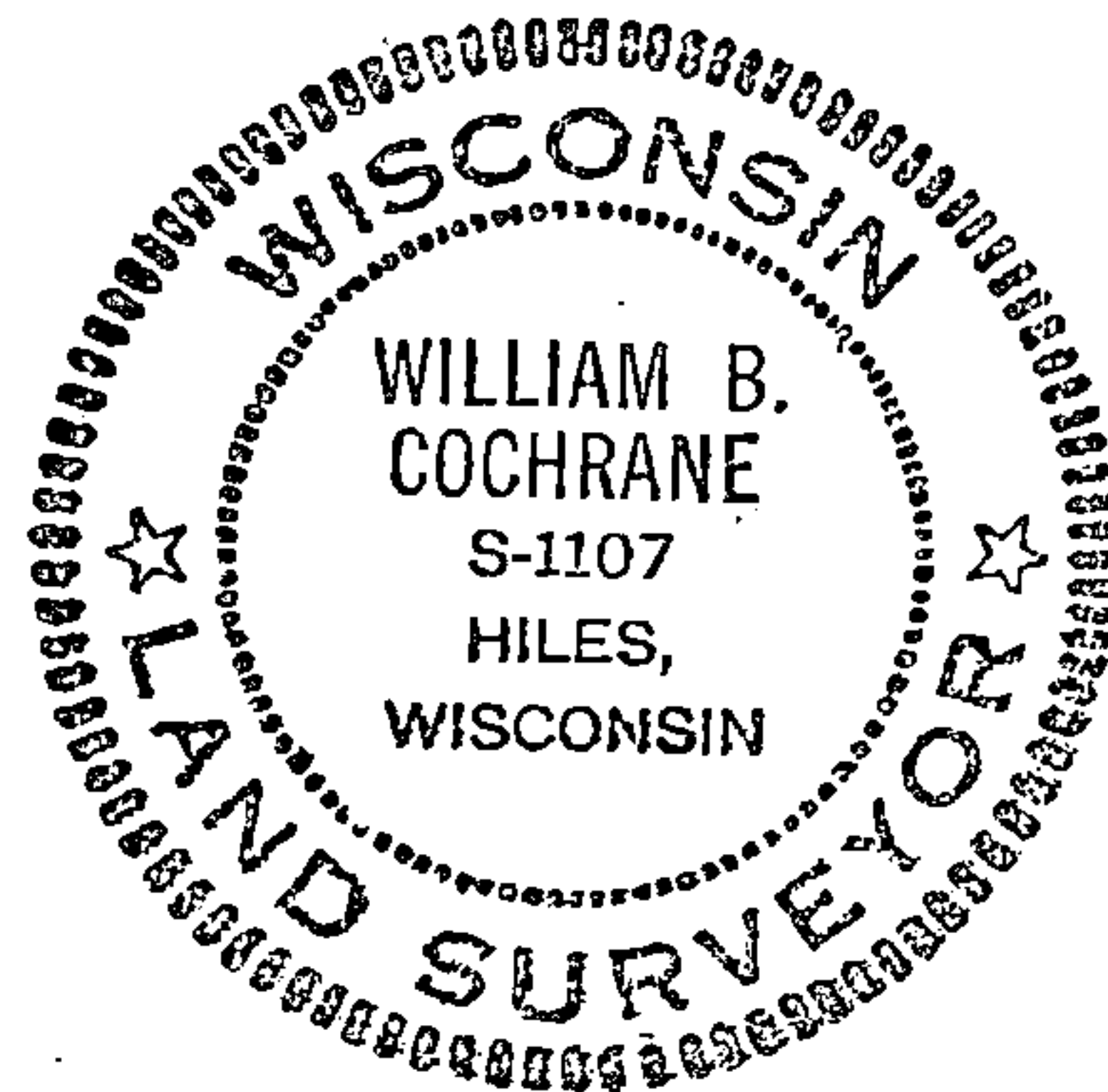
Surveyed in June 1858 by Alfred Millard
North between Sections 1 and 6. 82.13 chains set post for corner of Townships 38 and 39 North, Ranges 13 and 14 East
Yellow Birch, 20", N15°W, 16 links
Lynn, 16", N63°E, 29 links
Sugar, 12", S58°E, 23 links
Lynn, 20", S76°W, 14 links
South 10.13 chains enter swamp bears East and West

Description of corner evidence found:

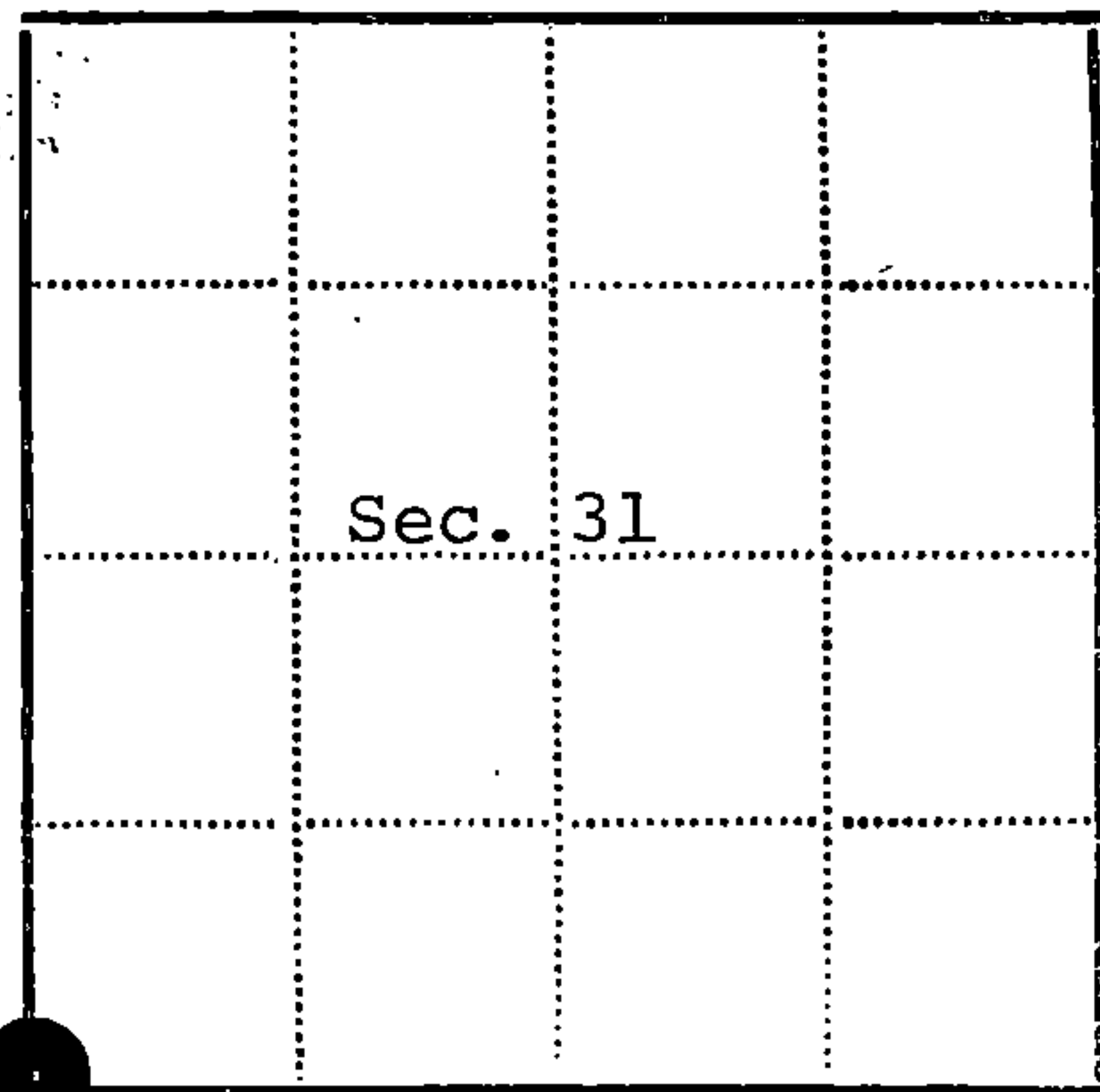
4x4 Cedar post leaning against 24" Elm. From Forest Service records of 1935 post was reported in place North of the Elm, 6 paces. At a position North of the Elm 24 links I found evidence of the post point. From the post point a Sugar stump bears S58°E, 23 links. Chained South and entered swamp at 10.0 chains bears NE and SW, 40.0 chains North Quarter corner between Sections 31 and 36 44.0 chains East Quarter corner between Sections 6 and 31.

Description of monument and accessories I established to perpetuate the location of this corner:

I replaced the old post point with a 2" inside diameter, galvanized pipe 3 feet long filled with concrete with a brass cap stamped:
T39N, R13E, R14E, S36, S31, S1, S6, T38N, 1975, S-1107.
From which the following bear:
Elm, 8", N60°E, 14.82 feet
Maple, 6", S68°E, 34.82 feet
Elm, 24", South, 15.58 feet
Set a steel sign post, NE of the monument, 0.50 feet.



4.39/13 360000



- - Corner monument restored
- -

Resident witnesses

Dated at Three Lakes Wisconsin, this 24th day of December 1975.

Signature William B. Cochrane Title Survey Technician
(County Surveyor, Registered Land Surveyor, or other duly authorized official)

Surveyors Registration No. S-1107 DOCUMENT NUMBER 108560

Office of Register of Deeds County of Forest

I hereby certify that the within instrument was filed in this office for record on the 14th day of January 1976, and was filed in Book No. Page No. of County Records.

Signature Eugene Stutzman Title Register of Deeds

Township 39 North Range 14 East Section 31 Index No. Z-1 Page No.

21

Stock No. 26273

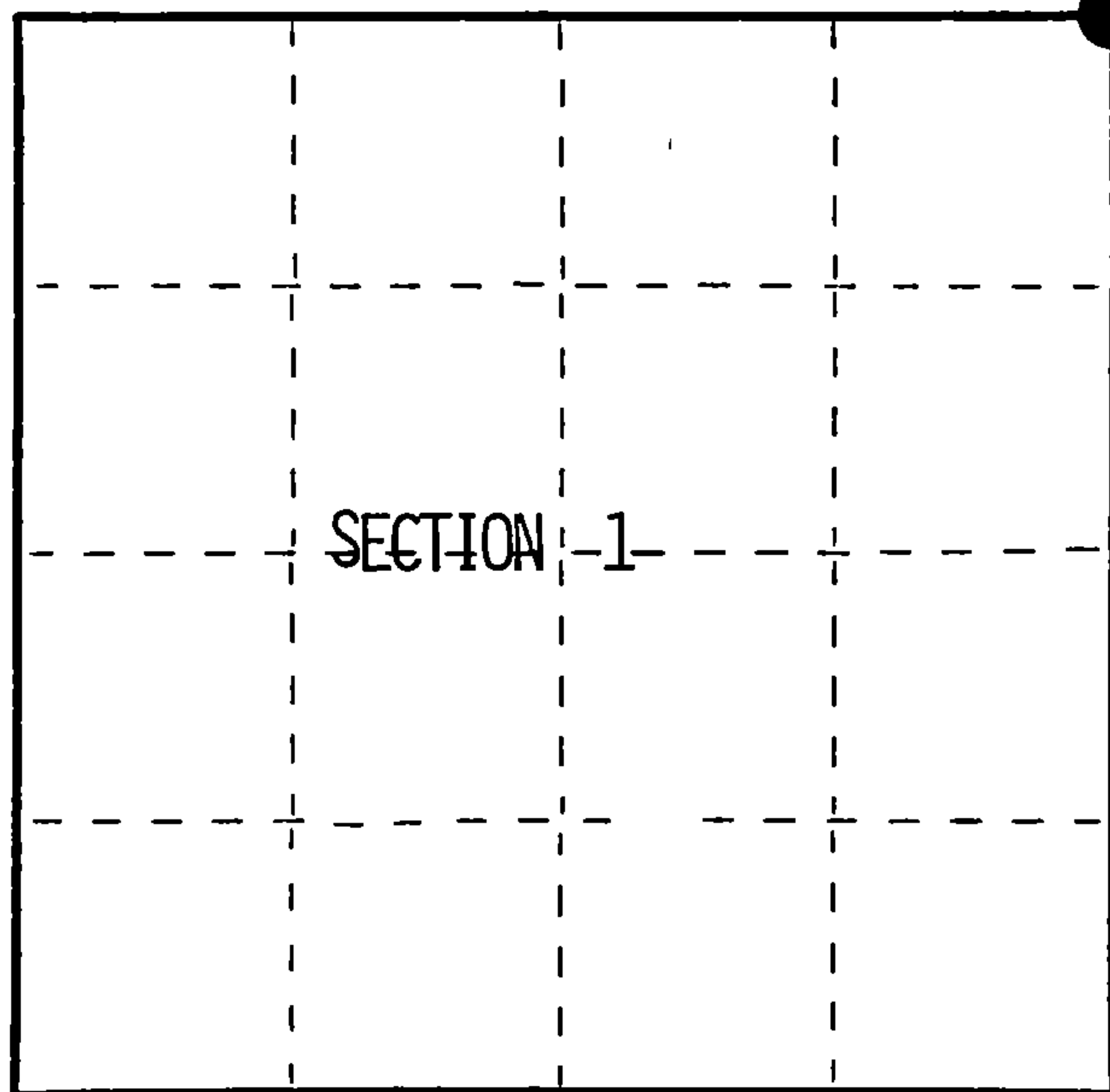
156550

FORM 985 H. C. MILLER CO., MILWAUKEE

State of Wisconsin }
County of Forest } ss.

I, William B. Cochrane, do hereby
certify that on the 25 th day
of March, 19 93, I found
evidence of the Northeast Section
corner of Section 1
Township 38, North, Range
13 East, Fourth Principal Meridian,
as described hereon; and that from this evidence
I established a new monument and accessories
as described hereon to perpetuate the original
location of this corner.

Resident witnesses:



● = Corner monument restored.

CERTIFIED LAND CORNER RESTORATION

Index No. A-25

History of original corner establishment:

Original Government survey of the township lines done in 1858 by Alfred Millard
On 4/4/75 William B. Cochrane found Wooden post point and original bearing tree evidence.
Set a 2½"X36" Galvanized iron pipe monument 2½ feet in the ground with a brass cap stamped:
T39N, R13E, R14E, S36, S31, S1, S6, T38N, 1975, S-1107. From which the following bear:

Elm	8"	N60°E	14.82 feet
Maple	6"	S68°E	34.82 feet
Elm	24"	South	15.58 feet
Steel sign post		Northeast	.50 feet

Description of corner evidence found:

Found monument as described and in place.

Elm (stump)	South	15.58 feet
-------------	-------	------------

Made new bearing trees

Maple	6"	S60°E	28.77 feet
B. Ash	6"	N66°E	47.57 feet
Spruce	4"	N37°E	30.20 feet
Steel sign post		East	2.00 feet

Description of monument and accessories I established to perpetuate the original location of this corner.

Found the monument as set in 1975 from ties to original evidence. left as such

Made the following new bearing trees:

Maple	6"	S60°E	28.77 feet
B. Ash	6"	N66°E	47.57 feet
Spruce	4"	N37°E	30.20 feet
Steel sign post		East	2.00 feet

Dated at Hiles, Wis., this 3 rd day of January, 19 95

Signature William B. Cochrane Title Land Surveyor Registration No. S-1107
(County Surveyor, Registered Land Surveyor, or other duly authorized official)

Office of Register of Deeds, County of Forest, I hereby certify that the within
instrument was filed in this office for record on the 23rd day of August, 19 96
at 2:30 o'clock P. M.

(Register of Deeds)

By Paul Jankiewicz Deputy

4391330000

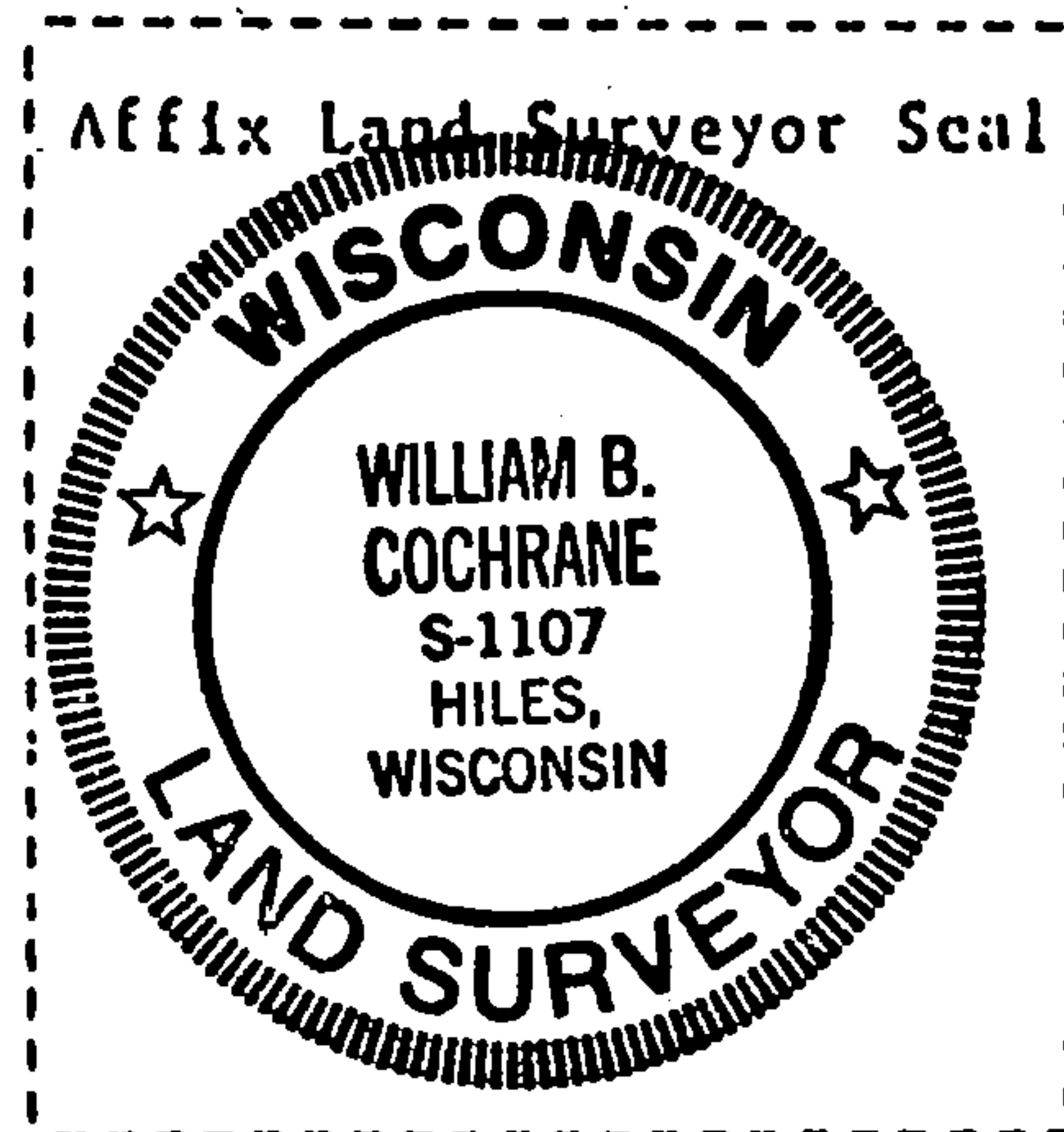
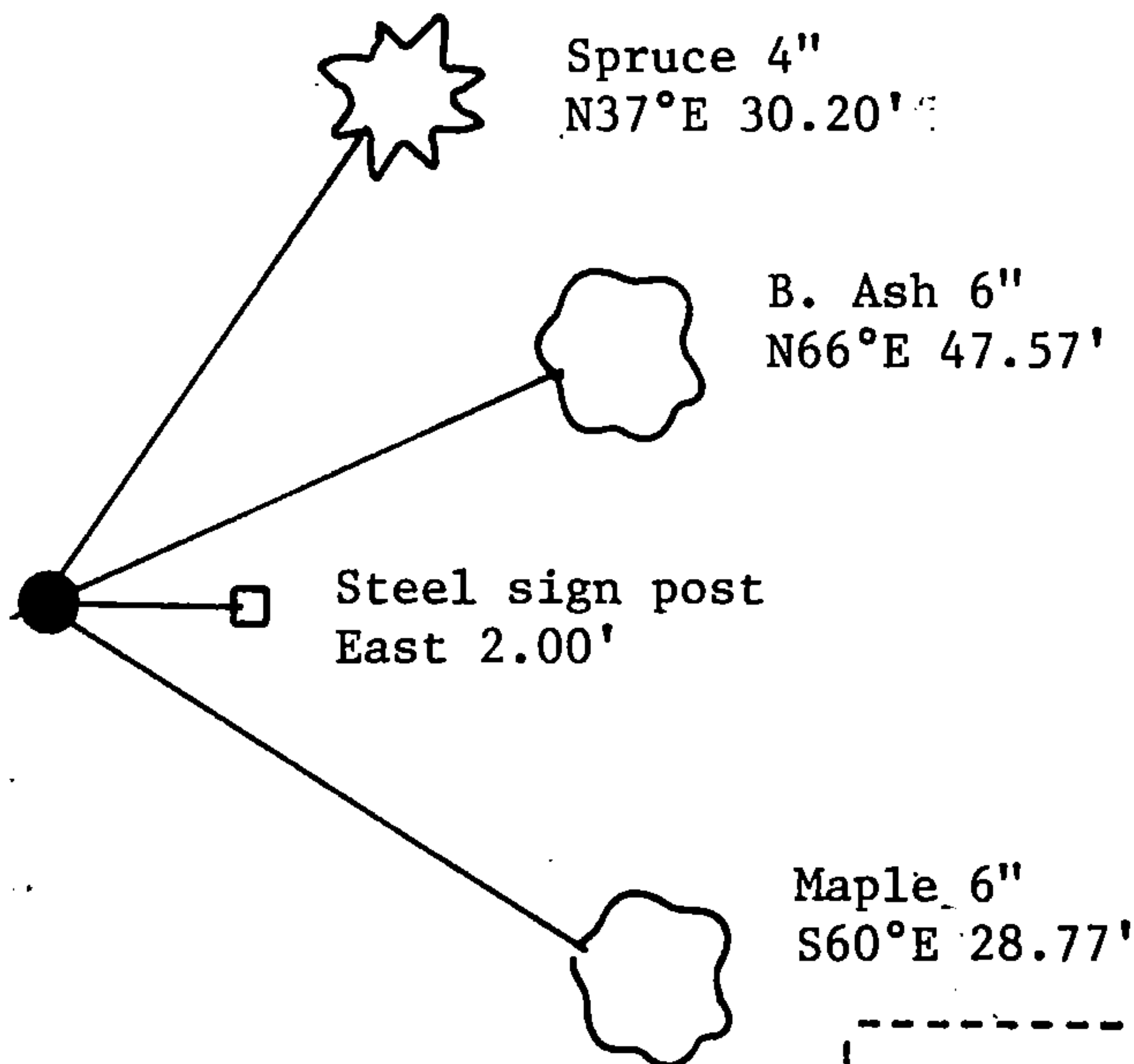
- (e) Describe any material discrepancy between the location of the corner as restored or reestablished and the location of that corner as previously restored or reestablished by distance and direction. Show the discrepancy on the plan view drawing under (d), above. Show the distances between the corner as previously restored or reestablished and (1) the corner as restored or reestablished, and (2) to at least 2 of the witness monuments shown on the drawing in (d), above.

See Drawing below.

- (f) Was the corner restored through acceptance of (1) an obliterated evidence location, or, (2) a found perpetuated location?

This is a found perpetuated Corner location.

- (g&h) Was the corner reestablished through lost corner proportionate methods? If so, show the method, including the directions and distances to other public land survey corners used as evidence or used for proportioning in determining the corner location?



- (i) I, _____
(type or print name) certify that the corner location shown on this record was determined by me or under my direction and control and that this U.S. Public Land Survey Monument Record is correct and complete to the best of my knowledge and belief.

William B. Cochrane
William B. Cochrane

1/3/95

Signature

Date

U.S. PUBLIC LAND SURVEY MONUMENT RECORD

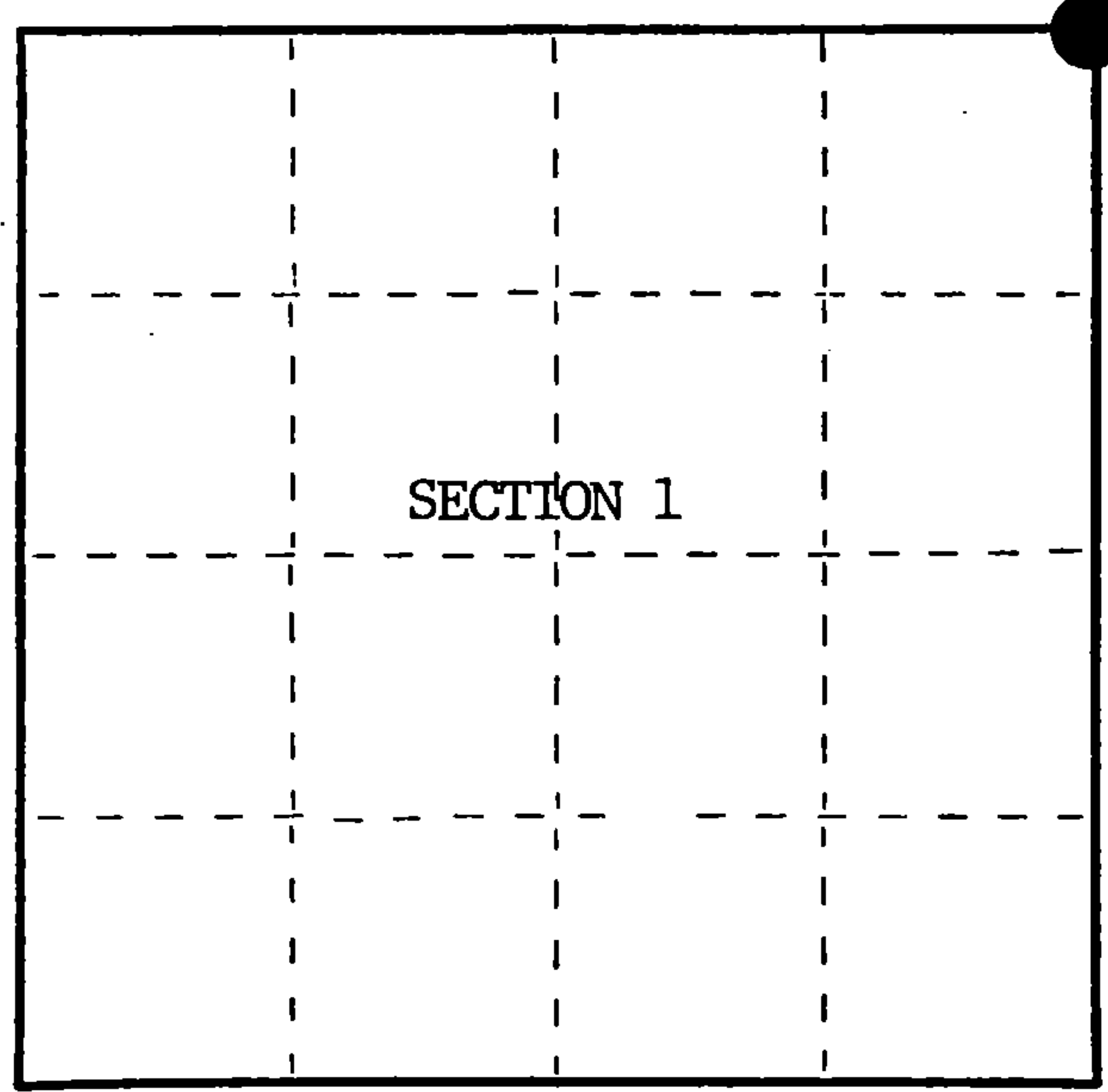
Index No. A-25

State of Wisconsin }
County of Forest } ss.

I William B. Cochran, do hereby
certify that on the 29th day
of July, 1985, I found
evidence of the Northeast Section
corner of Section 1
Township 38, North, Range
13 East, Fourth Principal Meridian,
as described hereon; and that from this evidence
I established a new monument and accessories
as described hereon to perpetuate the original
location of this corner.

Resident witnesses:
David Brownell

State Plane Co-ordinates
N- 236,775.767
E-2,306,026.128



○ = Corner monument restored.

History of original corner establishment:

Original Government Survey in 1858 by Alfred Millard.

Corner restored on April 4th, 1975, by William B. Cochran, a Registered
Land Surveyor with the U.S. Forest Service.

See Certified Land Corner Restoration Certificate #108560, filed in the
Registrar of Deeds Office, in the Forest County Courthouse.

Description of corner evidence found:

Found monument as described and in place, from which the following bear;

Elm	9"	N60°E	14.82 feet-Cut down for Aerial Photo Project.
Maple(Snag)		S68°E	34.82 feet
Elm(Dead)		South	15.58 feet
Steel Sign Post		NE	0.50 feet

Description of monument and accessories I established to perpetuate the original location of this corner.

Blazed and scribed the following new bearing trees;

B. Ash	6"	N66°E	47.57 feet
Maple	6"	S60°E	28.77 feet

Re-set Steel Sign Post NE 4.00 feet

Dated at Hiles, Wis., this 22nd day of January, 1986

Signature William B. Cochran Title Land Surveyor Registration No. S-1107
(County Surveyor, Registered Land Surveyor, or other duly authorized official)

Office of Register of Deeds, County of Forest I hereby certify that the within
instrument was filed in this office for record on the 11th day of March, 1987
at 3:30 o'clock P. M.

Paul Aschenbrenner
(Register of Deeds)

By Deputy

FORM NO. 985-A
H.C. Miller Company

Stock No. 26273

DOCUMENT NUMBER 132285

43913260000

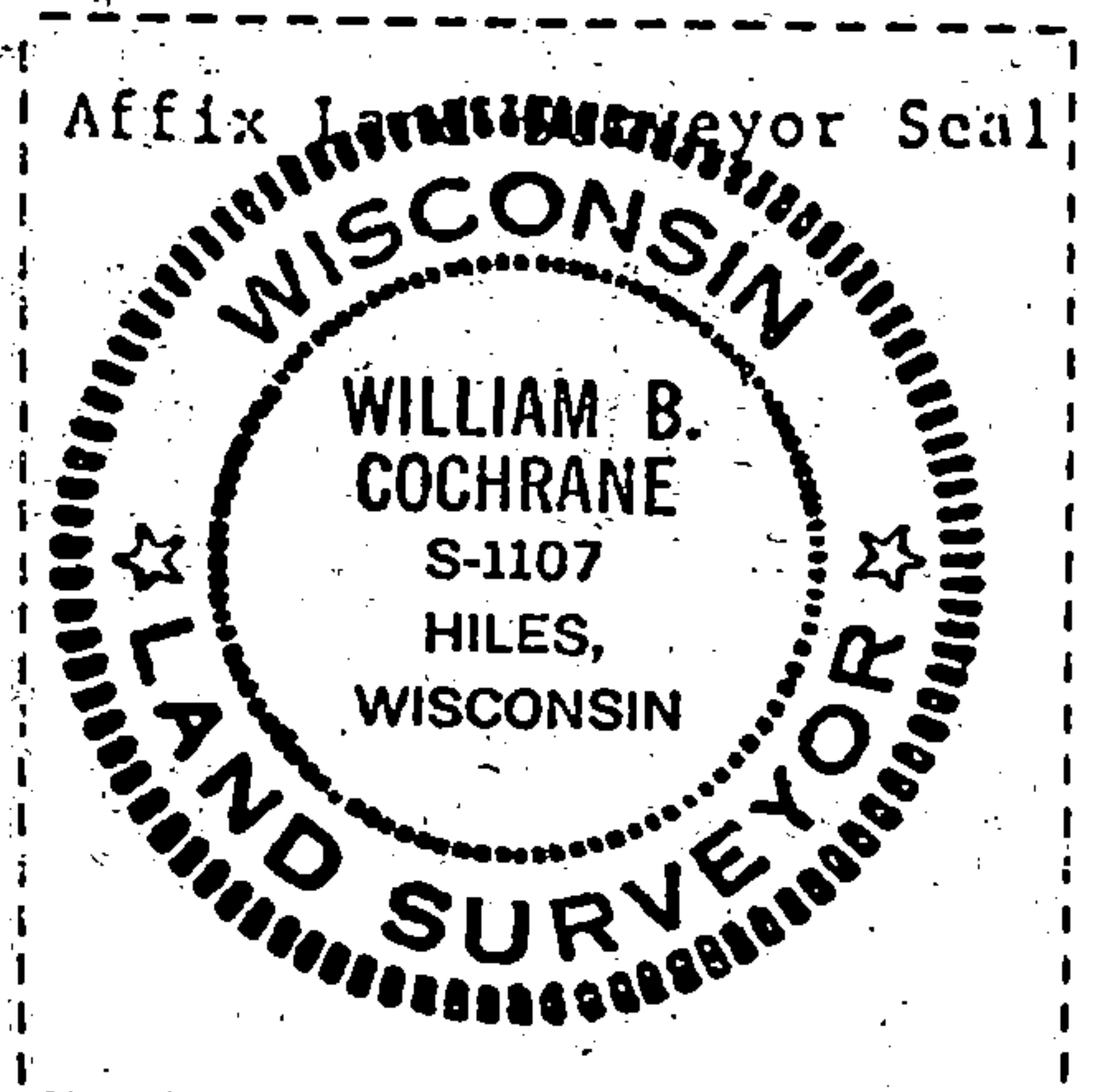
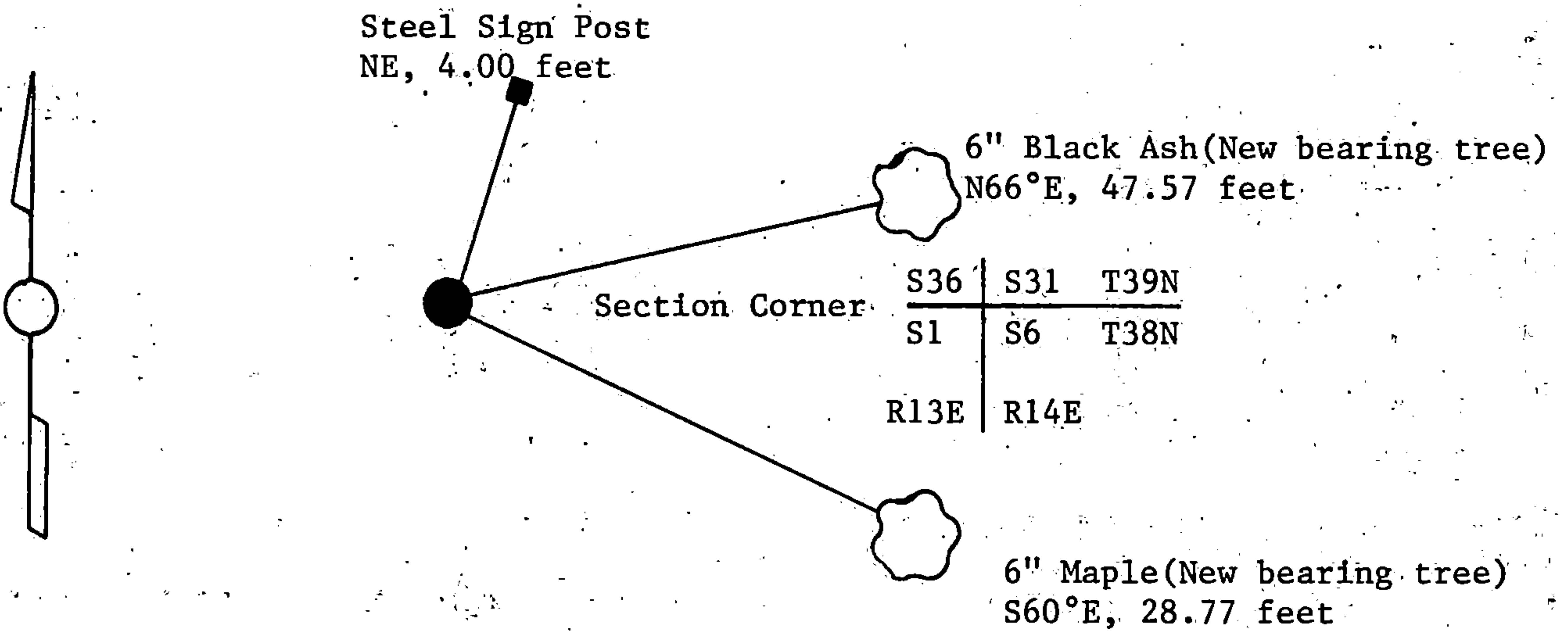
(e) Describe any material discrepancy between the location of the corner as restored or reestablished and the location of that corner as previously restored or reestablished by distance and direction. Show the discrepancy on the plan view drawing under (d), above. Show the distances between the corner as previously restored or reestablished and (1) the corner as restored or reestablished, and (2) to at least 2 of the witness monuments shown on the drawing in (d), above.

See drawing below.

(f) Was the corner restored through acceptance of (1) an obliterated evidence location, or, (2) a found perpetuated location?

Restored through acceptance of a found perpetuated location.

(g&h) Was the corner reestablished through lost corner proportionate methods? If so, show the method, including the directions and distances to other public land survey corners used as evidence or used for proportioning in determining the corner location?



William B. Cochrane

(i) I, William B. Cochrane
(type or print name) certify that the corner location shown on this record was determined by me or under my direction and control and that this U.S. Public Land Survey Monument Record is correct and complete to the best of my knowledge and belief.

William B. Cochrane October 8, 1986
Signature Date

Survey requested by: Edward L. Hiles 3-9-87
District Ranger Date

U.S. PUBLIC LAND SURVEY MONUMENT RECORD

Index No. Z-25

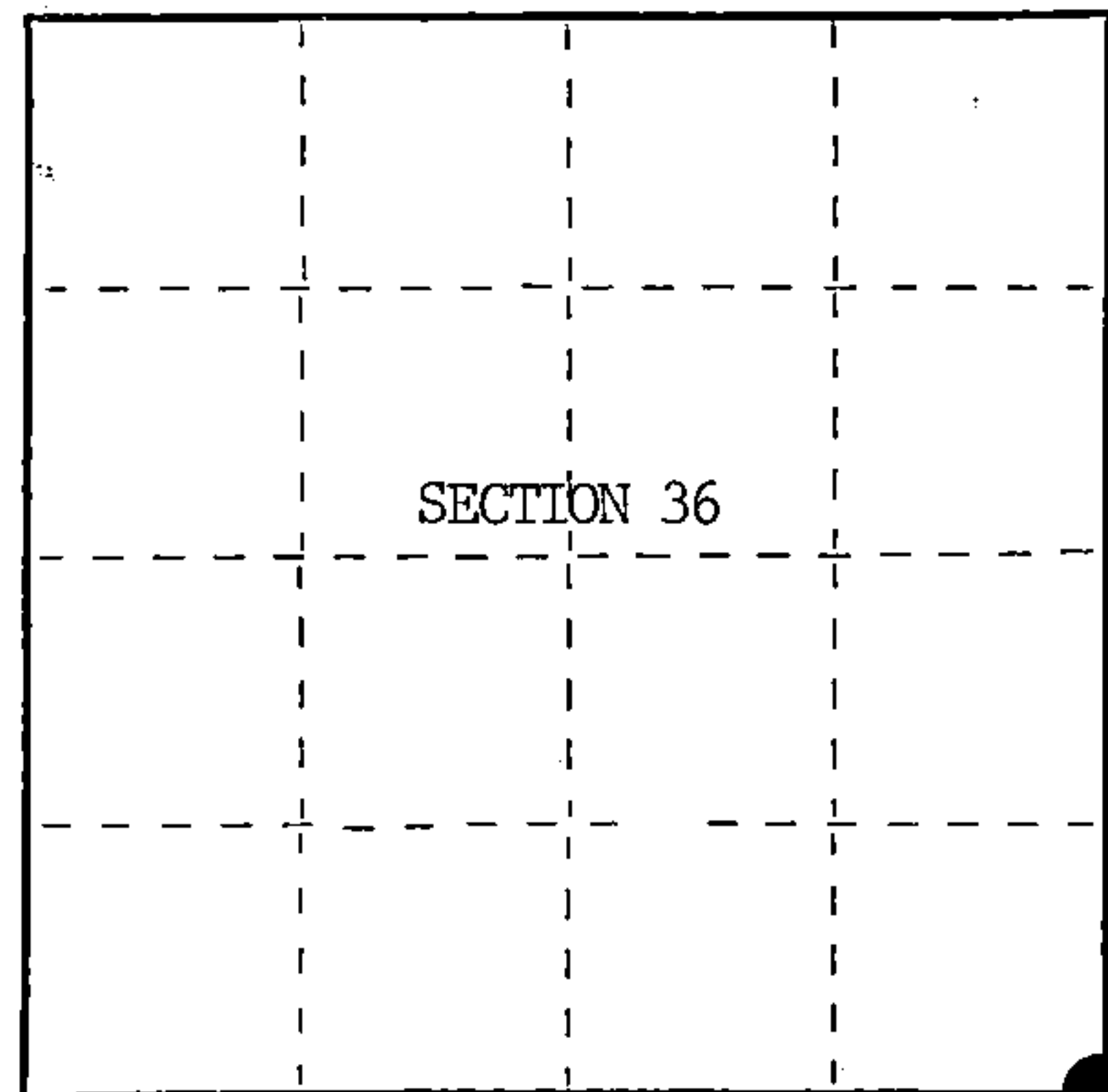
State of Wisconsin }
County of Forest } ss.

I, William B. Cochrane, do hereby certify that on the 29th day of July, 1985, I found evidence of the Southeast Section corner of Section 36 Township 39, North, Range 13 East, Fourth Principal Meridian, as described hereon; and that from this evidence I established a new monument and accessories as described hereon to perpetuate the original location of this corner.

Resident witnesses:

David Brownell

State Plane Co-ordinates
N- 236,775.767
E- 2,306,026.128



○ = Corner monument restored.

History of original corner establishment:

Original Government Survey in 1858 by Alfred Millard.

Corner restored on April 4th, 1975, by William B. Cochrane, a Registered Land Surveyor with the U.S. Forest Service.

See Certified Land Corner Restoration Certificate #108560, filed in the Registrar of Deeds Office, in the Forest County Courthouse.

Description of corner evidence found:

Found monument as described and in place, from which the following bear;

Elm	9"	N60°E	14.82 feet-Cut down for Aerial Photo Project.
Maple(Snag)		S68°E	34.82 feet
Elm(Dead)		South	15.58 feet
Steel Sign Post		NE	0.50 feet

Description of monument and accessories I established to perpetuate the original location of this corner.

Blazed and scribed the following new bearing trees;

B. Ash	6"	N66°E	47.57 feet
Maple	6"	S60°E	28.77 feet

Re-set Steel Sign Post NE 4.00 feet

Dated at Hiles, Wis., this 22nd day of January, 1986

Signature William B. Cochrane Title Land Surveyor Registration No. S-1107
(County Surveyor, Registered Land Surveyor, or other duly authorized official)

Office of Register of Deeds, County of Forest, I hereby certify that the within instrument was filed in this office for record on the 11th day of March, 1987 at 3:30 o'clock P. M.

Paul Achenbrenner
(Register of Deeds)

By _____ Deputy

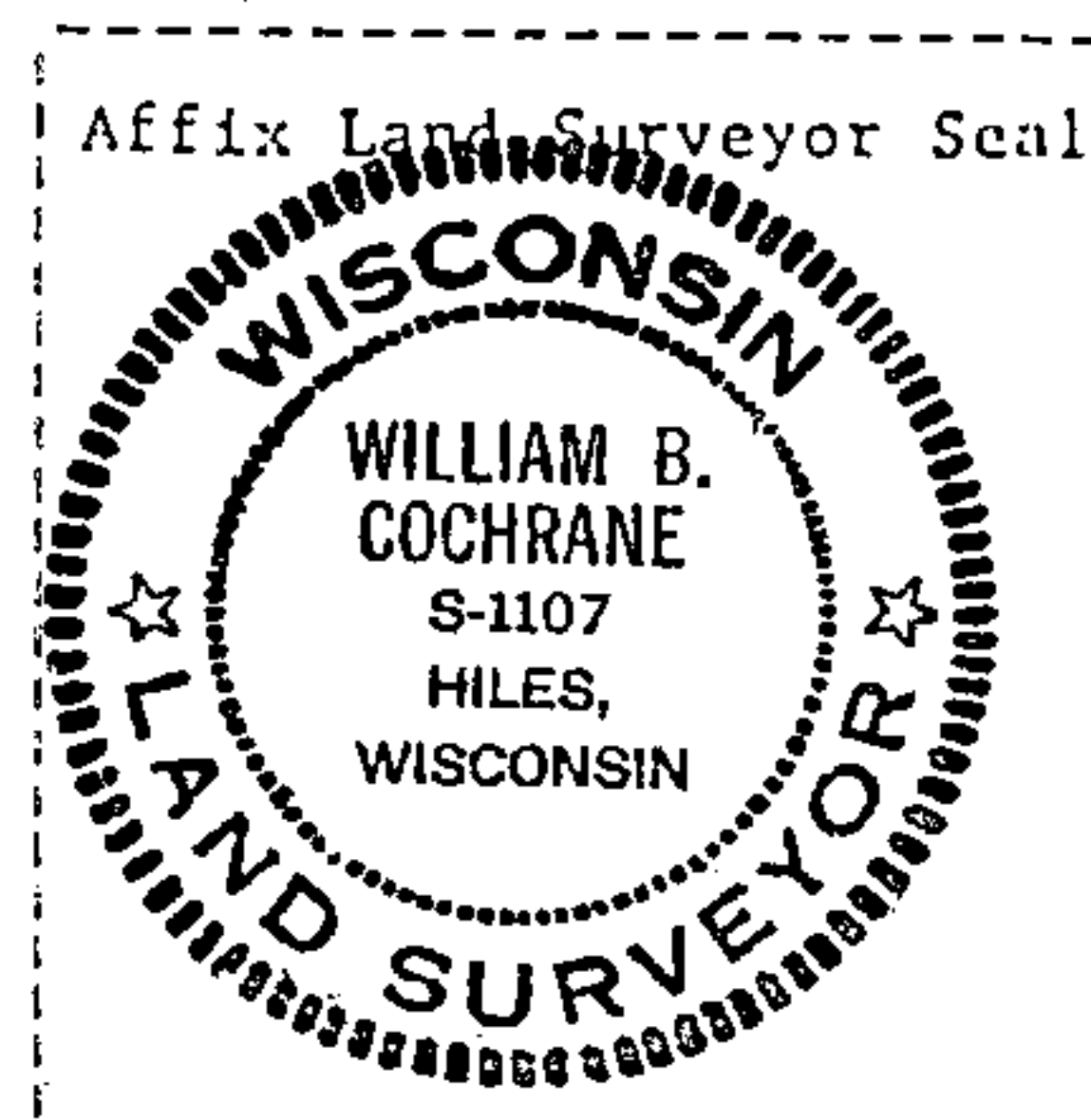
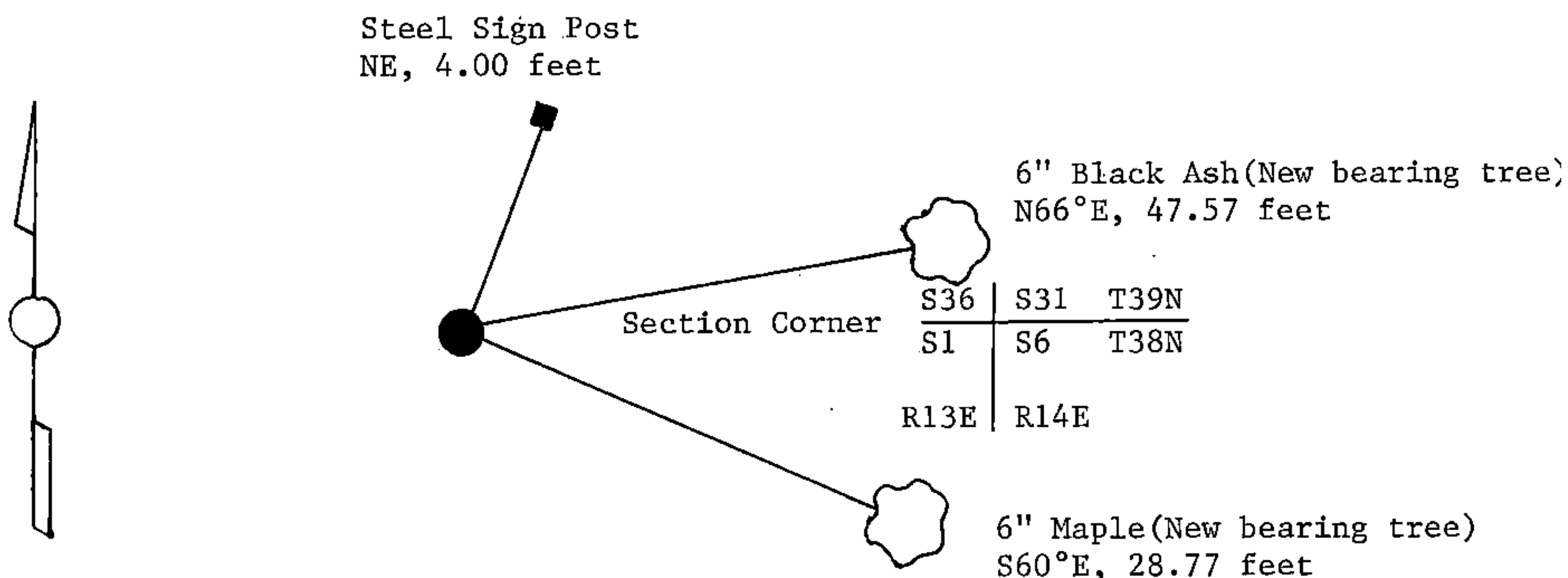
- (e) Describe any material discrepancy between the location of the corner as restored or reestablished and the location of that corner as previously restored or reestablished by distance and direction. Show the discrepancy on the plan view drawing under (d), above. Show the distances between the corner as previously restored or reestablished and (1) the corner as restored or reestablished, and (2) to at least 2 of the witness monuments shown on the drawing in (d), above.

See drawing below.

- (f) Was the corner restored through acceptance of (1) an obliterated evidence location, or, (2) a found perpetuated location?

Restored through acceptance of a found perpetuated location:

- (g&h) Was the corner reestablished through lost corner proportionate methods? If so, show the method, including the directions and distances to other public land survey corners used as evidence or used for proportioning in determining the corner location?



- (i) I, William B. Cochrane
(type or print name) certify that the corner location shown on this record was determined by me or under my direction and control and that this U.S. Public Land Survey Monument Record is correct and complete to the best of my knowledge and belief.

William B. Cochrane October 7, 1986
Signature Date

Survey requested by: Edward [Signature] 3-9-87
District Ranger Date

U.S. PUBLIC LAND SURVEY MONUMENT RECORD

Index No. A-1

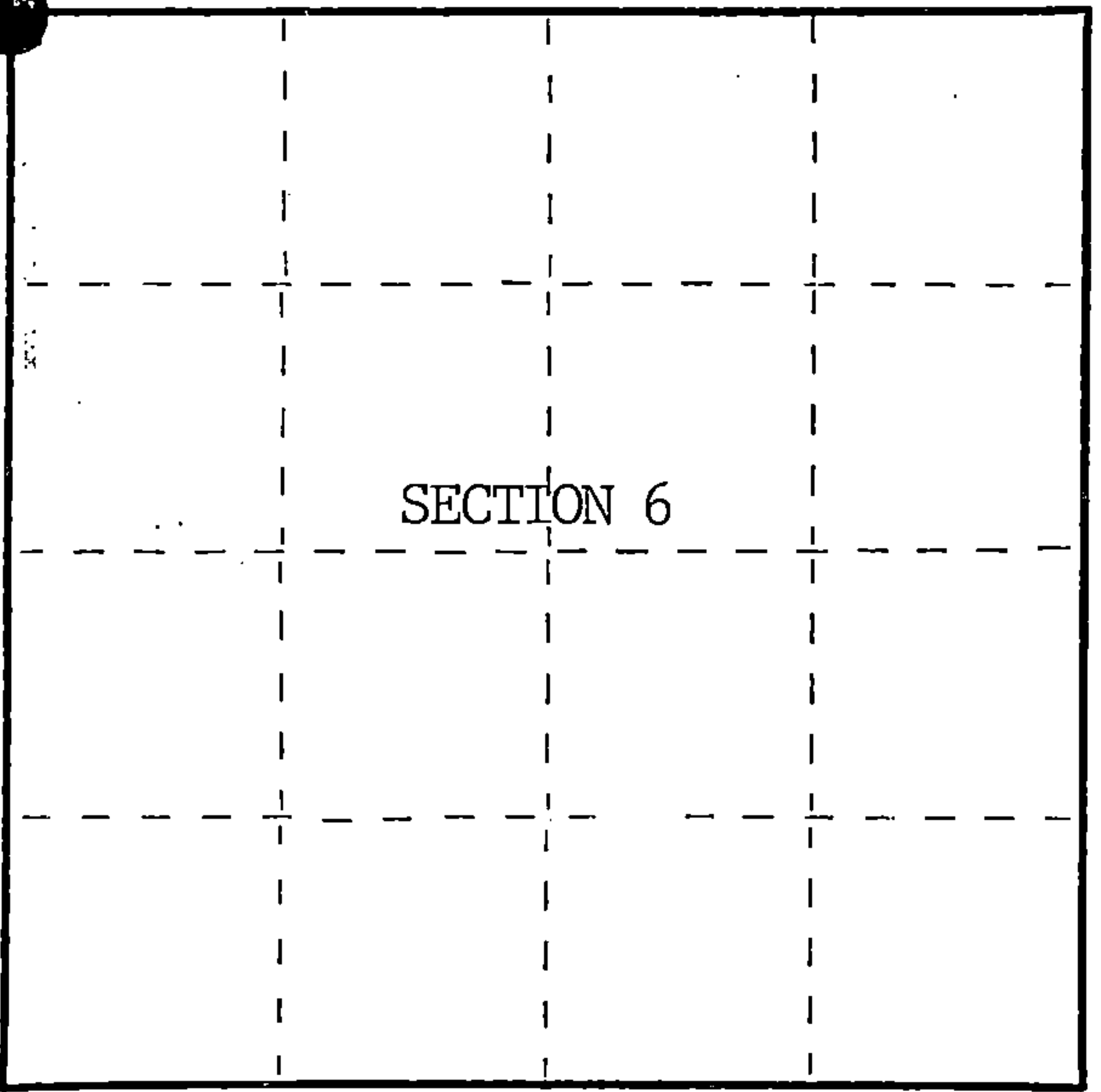
State of Wisconsin }
County of Forest } ss.

I William B. Cochrane, do hereby
certify that on the 29th day
of July, 1985, I found
evidence of the Northwest Section
corner of Section 6
Township 38, North, Range
14 East, Fourth Principal Meridian,
as described hereon; and that from this evidence
I established a new monument and accessories
as described hereon to perpetuate the original
location of this corner.

Resident witnesses:

David Brownell

State Plane Co-ordinates
N- 236,775.767
E-2,306,026.128



○ = Corner monument restored.

History of original corner establishment:

Original Government Survey in 1858 by Alfred Millard.

Corner restored on April 4th, 1975, by William B. Cochrane, a Registered
Land Surveyor with the U.S. Forest Service.

See Certified Land Corner Restoration Certificate #108560, filed in the
Registrar of Deeds Office, in the Forest County Courthouse.

Description of corner evidence found:

Found monument as described and in place, from which the following bear;

Elm	9"	N60°E	14.82 feet-Cut down for Aerial Photo Project.
Maple(Snag)		S68°E	34.82 feet
Elm(Dead)		South	15.58 feet
Steel Sign Post		NE	0.50 feet

Description of monument and accessories I established to perpetuate the original location of this corner.

Blazed and scribed the following new bearing trees;

B. Ash	6"	N66°E	47.57 feet
Maple	6"	S60°E	28.77 feet

Re-set Steel Sign Post NE 4.00 feet

Dated at Hiles, Wis., this 22nd day of January, 1986

Signature William B. Cochrane Title Land Surveyor Registration No. S-1107
(County Surveyor, Registered Land Surveyor, or other duly authorized official)

Office of Register of Deeds, County of Forest, I hereby certify that the within
instrument was filed in this office for record on the 11th day of March, 1987
at 3:30 o'clock P. M.

Paul Achenbrenner
(Register of Deeds)

By Deputy

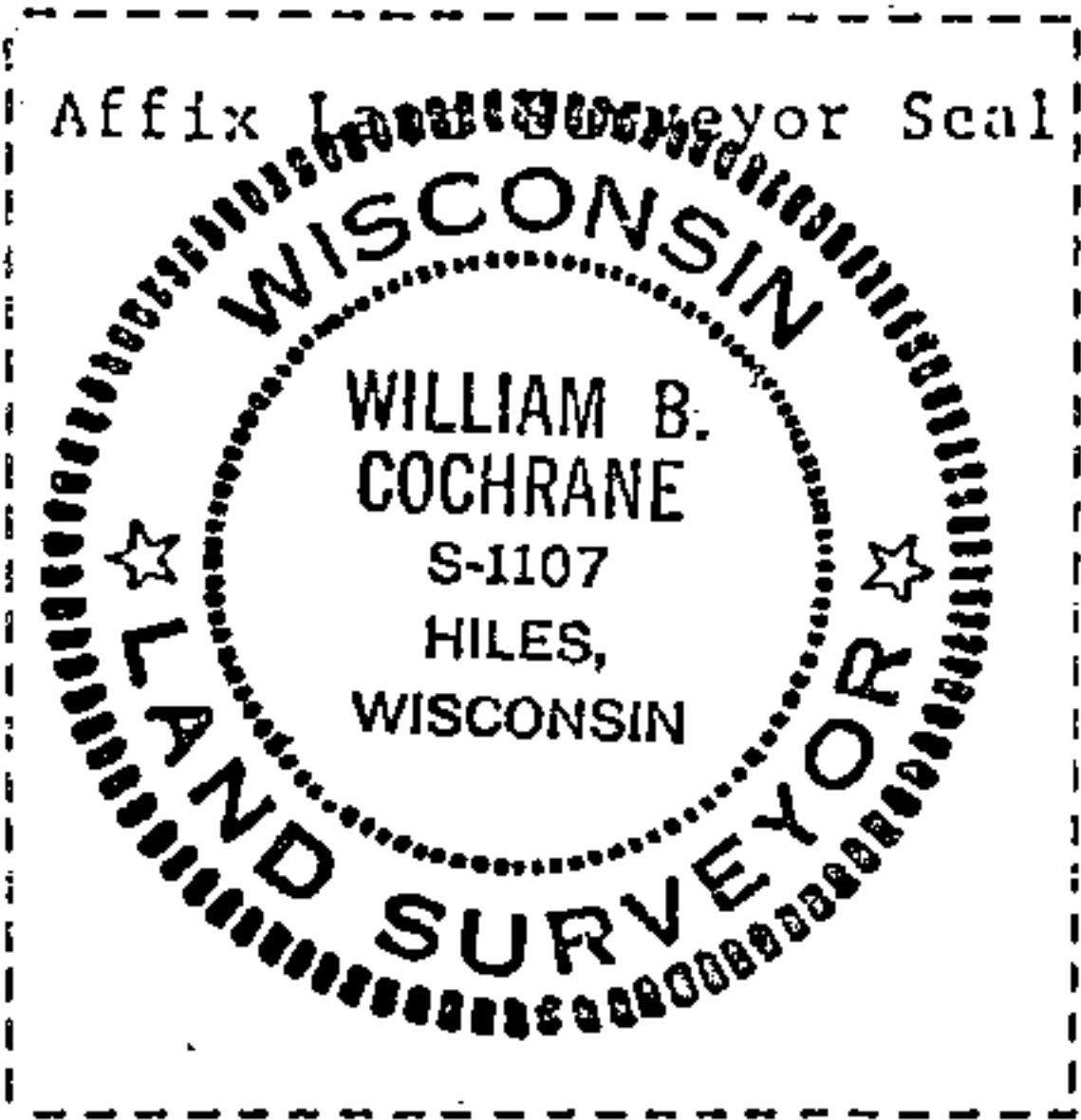
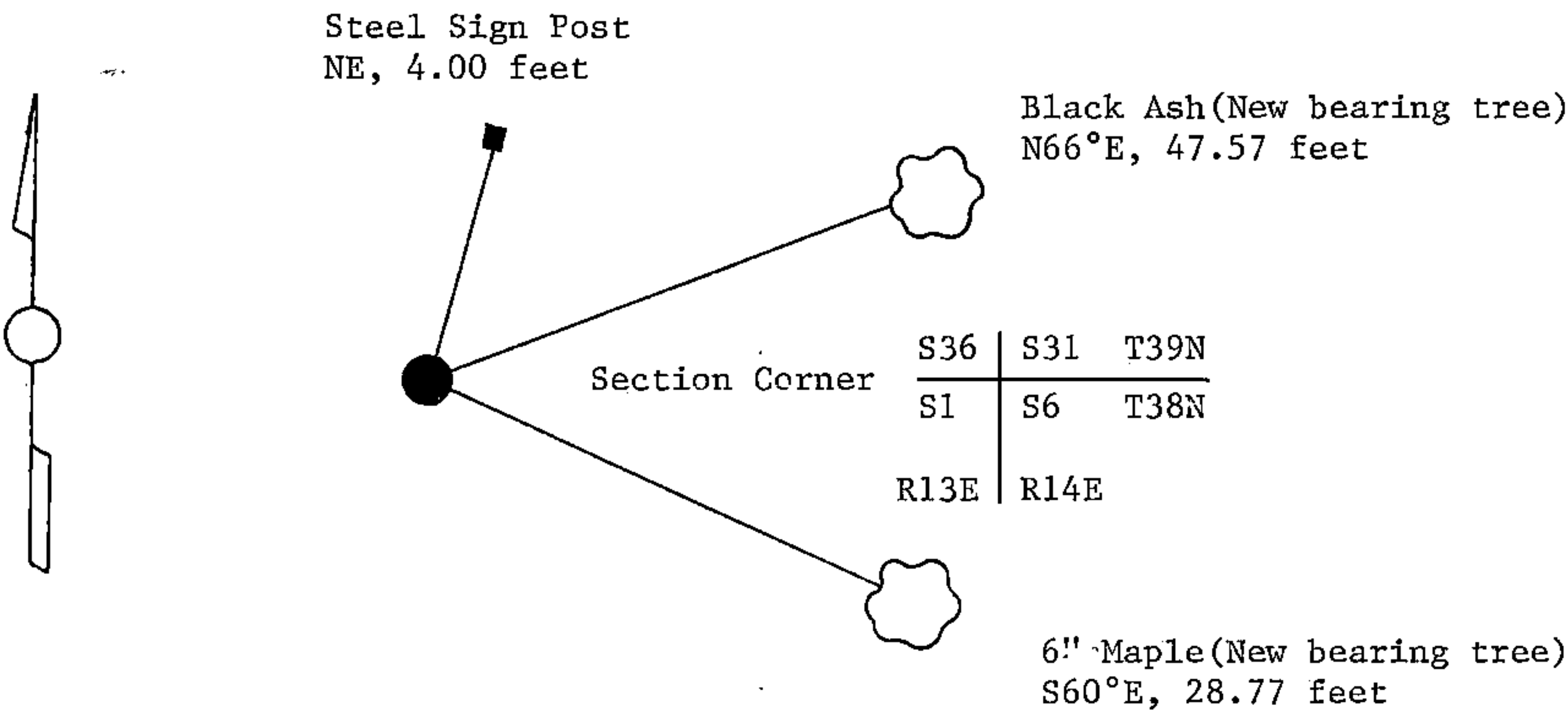
(e) Describe any material discrepancy between the location of the corner as restored or reestablished and the location of that corner as previously restored or reestablished by distance and direction. Show the discrepancy on the plan view drawing under (d), above. Show the distances between the corner as previously restored or reestablished and (1) the corner as restored or reestablished, and (2) to at least 2 of the witness monuments shown on the drawing in (d), above.

See drawing below.

(f) Was the corner restored through acceptance of (1) an obliterated evidence location, or, (2) a found perpetuated location?

Restored through acceptance of a found perpetuated location.

(g&h) Was the corner reestablished through lost corner proportionate methods? If so, show the method, including the directions and distances to other public land survey corners used as evidence or used for proportioning in determining the corner location?



(i) I, William B. Cochrane
(type or print name) certify that the corner location shown on this record was determined by me or under my direction and control and that this U.S. Public Land Survey Monument Record is correct and complete to the best of my knowledge and belief.

William B. Cochrane October 8, 1986
Signature Date

Survey requested by: Edward Casper 3-9-87
District Ranger Date

U.S. PUBLIC LAND SURVEY MONUMENT RECORD

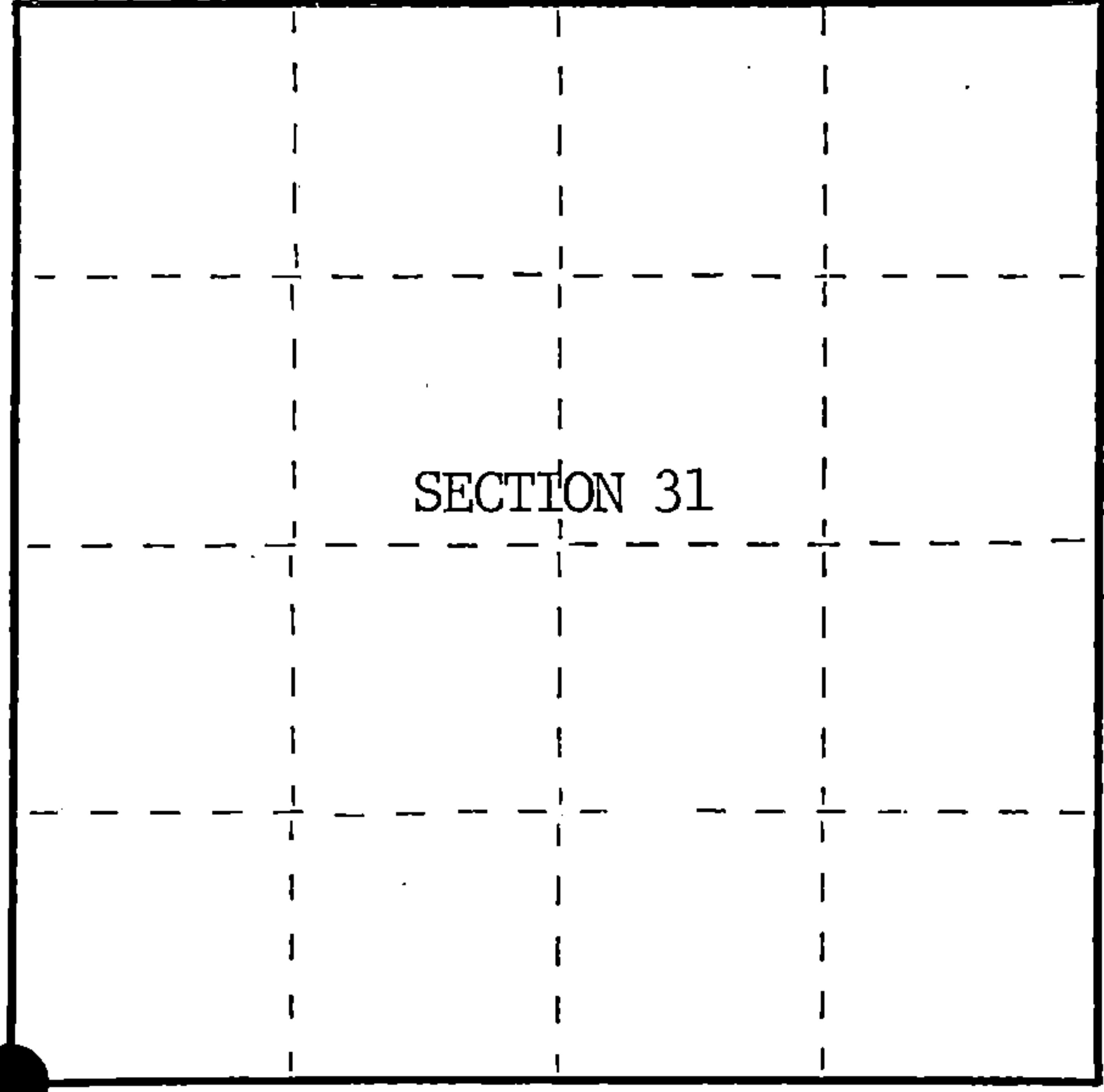
Index No. Z-1

State of Wisconsin }
County of Forest } ss.

I William B. Cochrane, do hereby
certify that on the 29th day
of July, 19 85, I found
evidence of the Southwest Section
corner of Section 31
Township 39, North, Range
14 East, Fourth Principal Meridian,
as described hereon; and that from this evidence
I established a new monument and accessories
as described hereon to perpetuate the original
location of this corner.

Resident witnesses:
David Brownell

State Plane Co-ordinates
N- 236,775.767
E-2,306,026.128



○ = Corner monument restored.

History of original corner establishment:

Original Government Survey in 1858 by Alfred Millard.

Corner restored on April 4th, 1975, by William B. Cochrane, a Registered
Land Surveyor with the U.S. Forest Service.

See Certified Land Corner Restoration Certificate #108560, filed in the
Registrar of Deeds Office, in the Forest County Courthouse.

Description of corner evidence found:

Found monument as described and in place, from which the following bear;

Elm	9"	N60°E	14.82 feet-Cut down for Aerial Photo Project.
Maple(Snag)		S68°E	34.82 feet
Elm(Dead)		South	15.58 feet
Steel Sign Post		NE	0.50 feet

Description of monument and accessories I established to perpetuate the original location of this corner.

Blazed and scribed the following new bearing trees;

B. Ash	6"	N66°E	47.57 feet
Maple	6"	S60°E	28.77 feet

Re-set Steel Sign Post NE 4.00 feet

Dated at Hiles, Wis., this 22nd day of January, 19 86

Signature William B. Cochrane Title Land Surveyor Registration No. S-1107
(County Surveyor, Registered Land Surveyor, or other duly authorized official)

Office of Register of Deeds, County of Forest, I hereby certify that the within
instrument was filed in this office for record on the 11th day of March, 19 87.
at 3:30 o'clock P. M.

Paul Aschenbrenner
(Register of Deeds)

By Deputy

FORM NO. 985-A
H.C. Miller Company

Stock No. 26273

DOCUMENT NUMBER 132400

43913360000

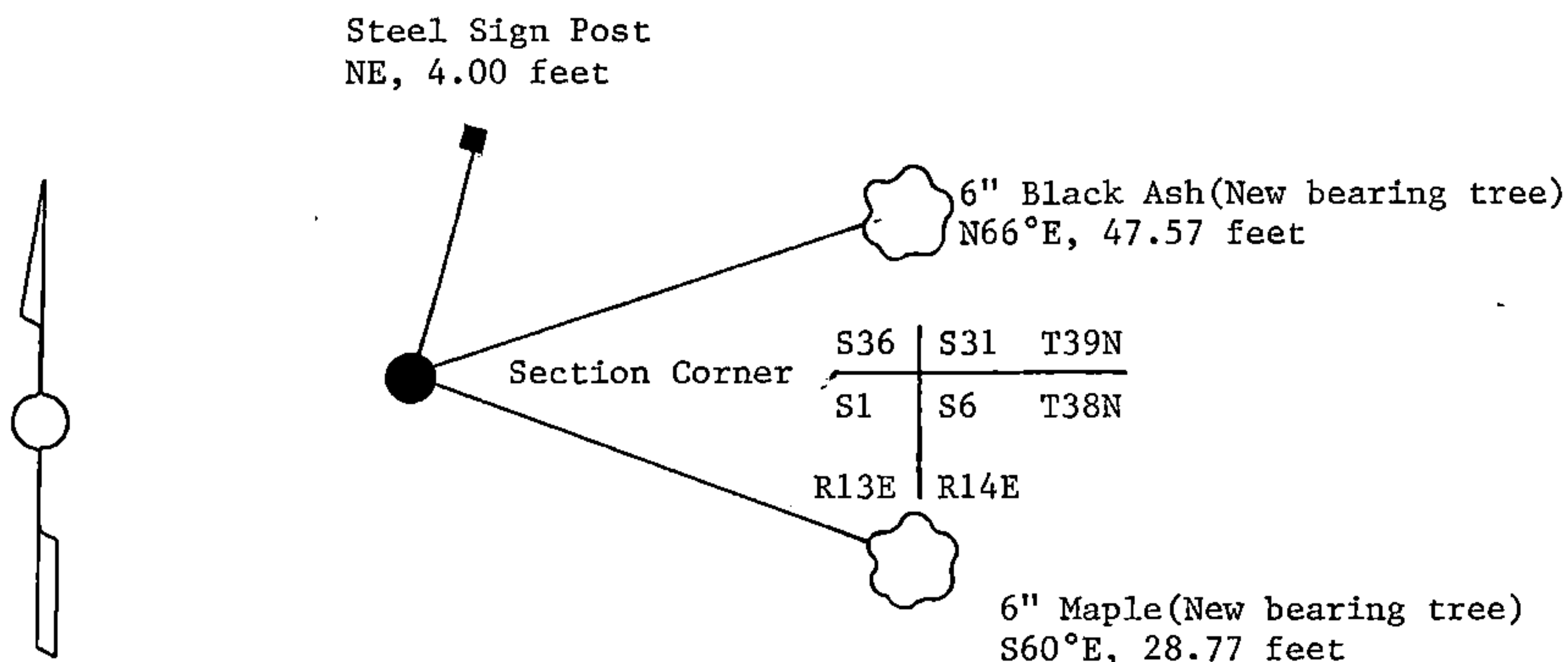
- (e) Describe any material discrepancy between the location of the corner as restored or reestablished and the location of that corner as previously restored or reestablished by distance and direction. Show the discrepancy on the plan view drawing under (d), above. Show the distances between the corner as previously restored or reestablished and (1) the corner as restored or reestablished, and (2) to at least 2 of the witness monuments shown on the drawing in (d), above.

See drawing below.

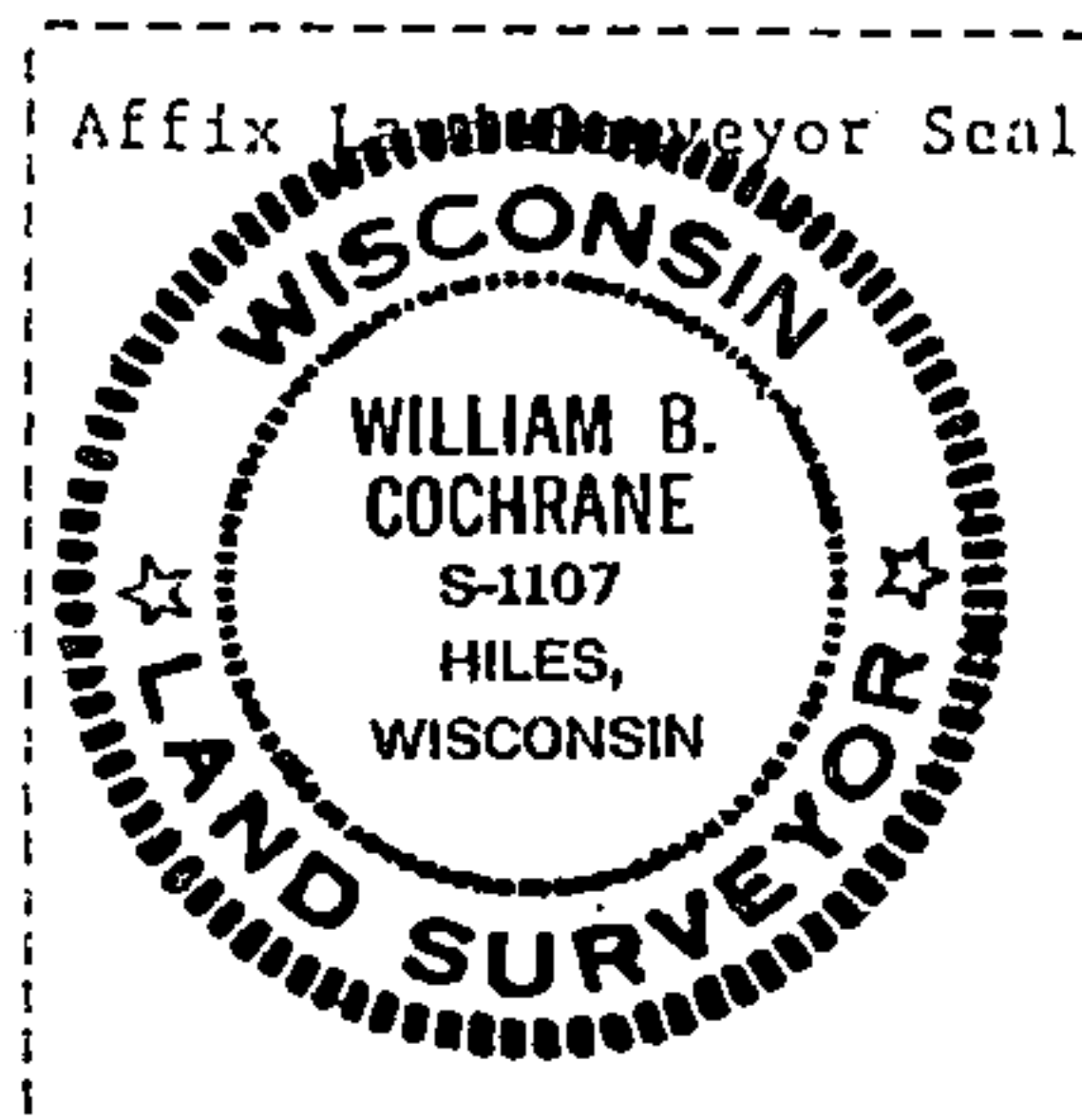
- (f) Was the corner restored through acceptance of (1) an obliterated evidence location, or, (2) a found perpetuated location?

Restored through acceptance of a found perpetuated location.

- (g&h) Was the corner reestablished through lost corner proportionate methods? If so, show the method, including the directions and distances to other public land survey corners used as evidence or used for proportioning in determining the corner location?



- (i) I, William B. Cochrane
(type or print name) certify that the corner location shown on this record was determined by me or under my direction and control and that this U.S. Public Land Survey Monument Record is correct and complete to the best of my knowledge and belief.



William B. Cochrane October 7, 1986
Signature Date

Survey requested by: Edward Eger 3-9-87
District Ranger Date