

CERTIFIED LAND CORNER RESTORATION

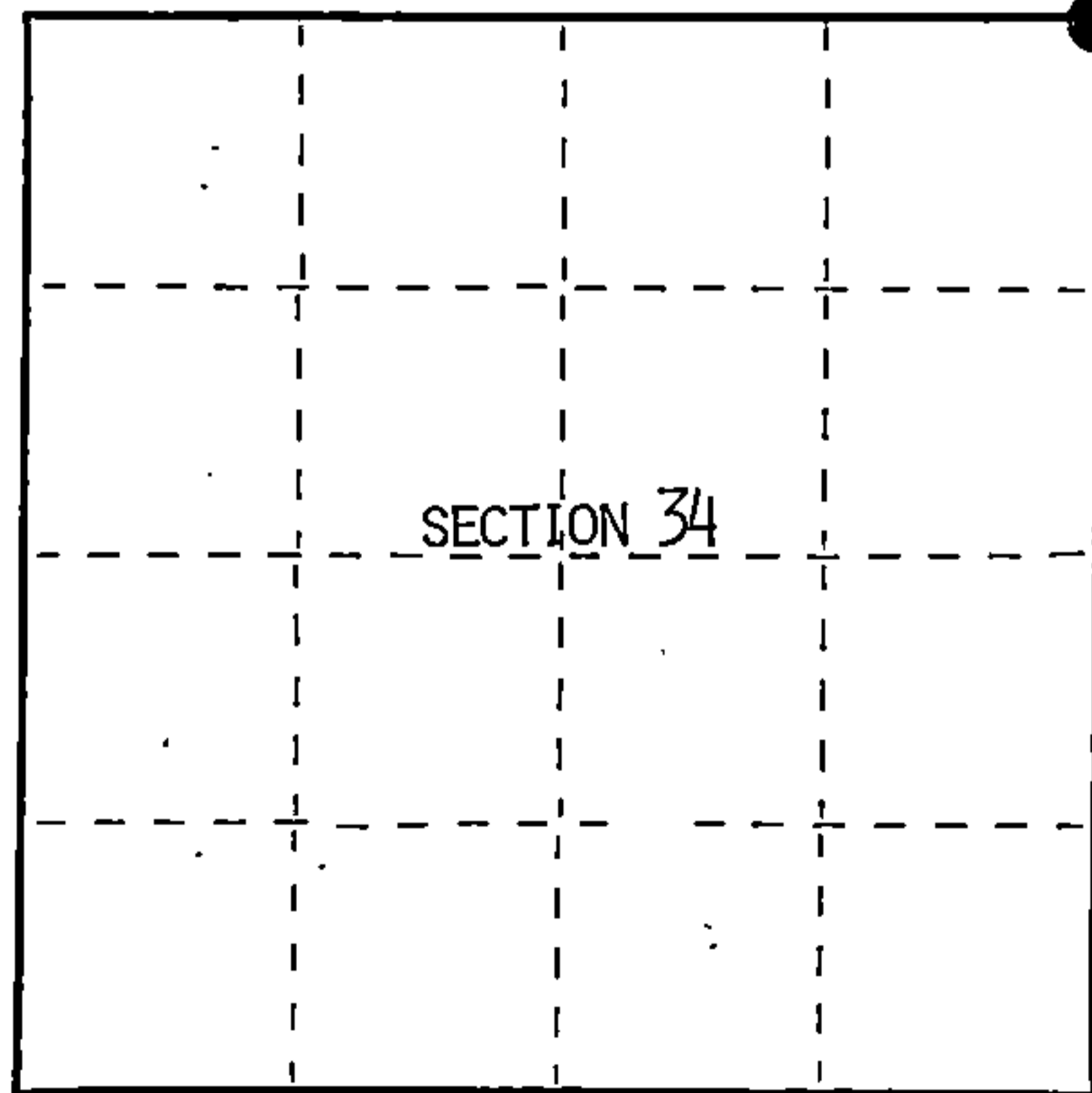
Index No. V-17

State of Wisconsin }  
County of Forest } ss.

I, William B. Cochrane, do hereby certify that on the 27 th day of July, 19 94, I found evidence of the Northeast Section corner of Section 34 Township 39, North, Range 13 East, Fourth Principal Meridian, as described hereon; and that from this evidence I established a new monument and accessories as described hereon to perpetuate the original location of this corner.

Resident witnesses:

.....  
.....  
.....



● = Corner monument restored.

History of original corner establishment:

Original Government Survey by William E. Daugherty in 1865.

At 80 chains North between Sections 34 and 35 Set post form which the following bear:

Tamarack	10"	S76°E	81 lks
Tamarack	10"	N25°W	15 lks

Description of corner evidence found:

No original corner evidence found. No other corner evidence found.

Re-establish the corner position through double proportionate methods.

Description of monument and accessories I established to perpetuate the original location of this corner.

At the double proportionate position. Set a 2½"X36" Aluminum pipe monument 2½ feet in the ground with an aluminum cap stamped: T39N, R13E, S26, S27, S34, S35, 1994, S-1107.

From which the following bear:

Spruce	15"	N67°E	4.83 feet
Spruce	12"	S04°E	31.08 feet
W. Pine	11"	S65°W	43.41 feet
W. Pine	20"	N54°W	39.40 feet
Steel sign post		North	1.00 feet

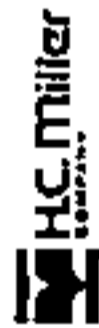
Dated at Hiles, Wis., this 21 st day of December, 19 94

Signature William B. Cochrane Title Land Surveyor Registration No. S-1107  
(County Surveyor, Registered Land Surveyor, or other duly authorized official)

Office of Register of Deeds, County of Forest, I hereby certify that the within instrument was filed in this office for record on the 23rd day of August, 19 96 at 2:30 o'clock P. M.

.....  
(Register of Deeds)  
By Paul Jakubowicz Deputy

FORM NO. 985-A



Stock No. 26273

156588

43913270000

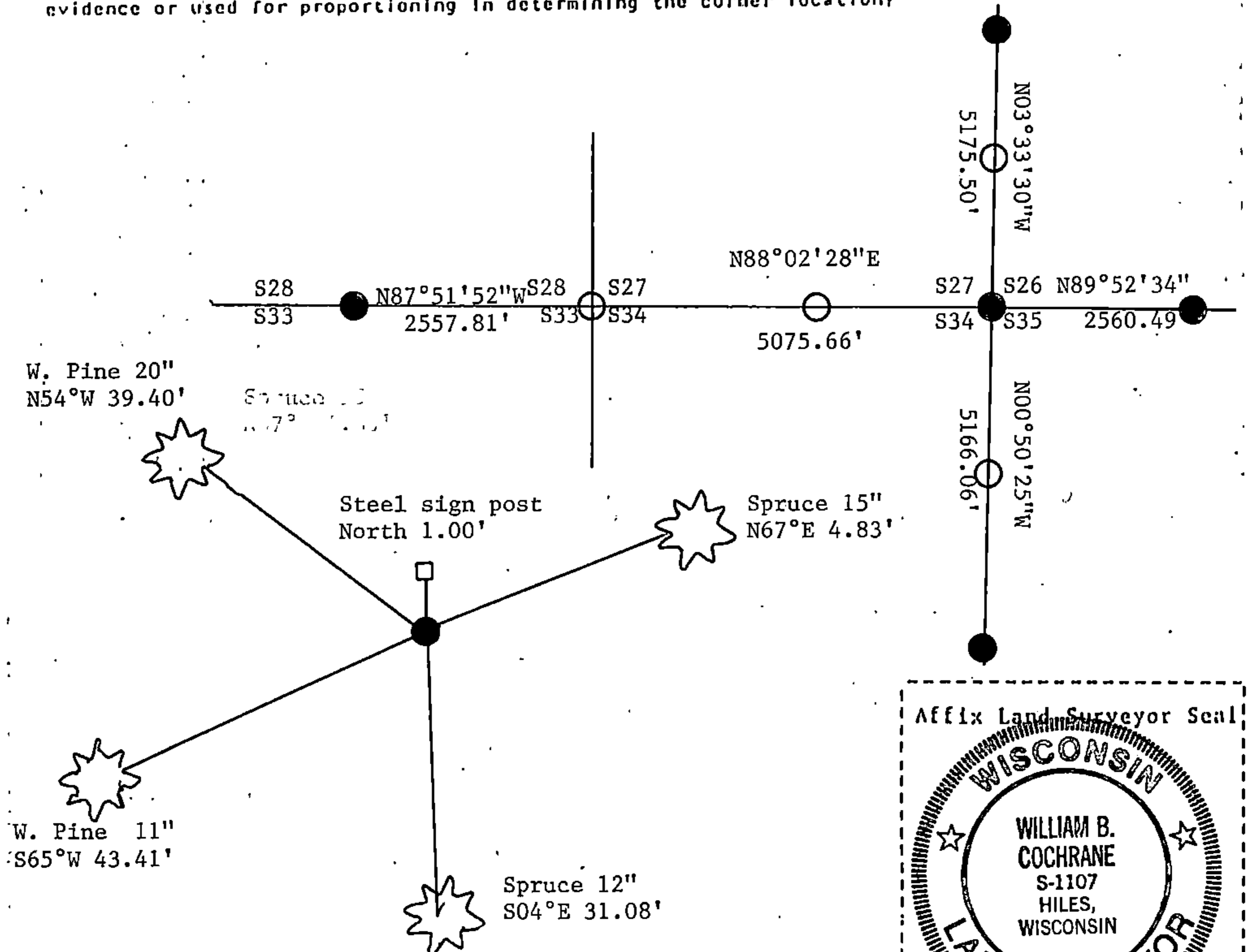
(e) Describe any material discrepancy between the location of the corner as restored or reestablished and the location of that corner as previously restored or reestablished by distance and direction. Show the discrepancy on the plan view drawing under (d), above. Show the distances between the corner as previously restored or reestablished and (1) the corner as restored or reestablished, and (2) to at least 2 of the witness monuments shown on the drawing in (d), above.

See drawing below.

(f) Was the corner restored through acceptance of (1) an obliterated evidence location, or, (2) a found perpetuated location?

Re-established through lost corner proportionate methods.

(g/h) Was the corner reestablished through lost corner proportionate methods? If so, show the method, including the directions and distances to other public land survey corners used as evidence or used for proportioning in determining the corner location?



William B. Cochrane

(i) I, William B. Cochrane (type or print name) certify that the corner location shown on this record was determined by me or under my direction and control and that this U.S. Public Land Survey Monument Record is correct and complete to the best of my knowledge and belief.

William B. Cochrane  
Signature

12/21/94  
Date

Survey requested by: \_\_\_\_\_  
District Ranger Date