

CERTIFIED LAND CORNER RESTORATION

State of Wisconsin }
County of Forest } ss.

I, William B. Cochrane, do hereby certify that on the 8th day of July, 1976, I found evidence of the West Quarter corner of Section 30 Township 39 North, Range 14 East, Fourth Principal Meridian, as described hereon; and that from this evidence I established a new monument and accessories as described hereon to perpetuate the original location of this corner:

Description of original monument and accessories and subsequent restorations:

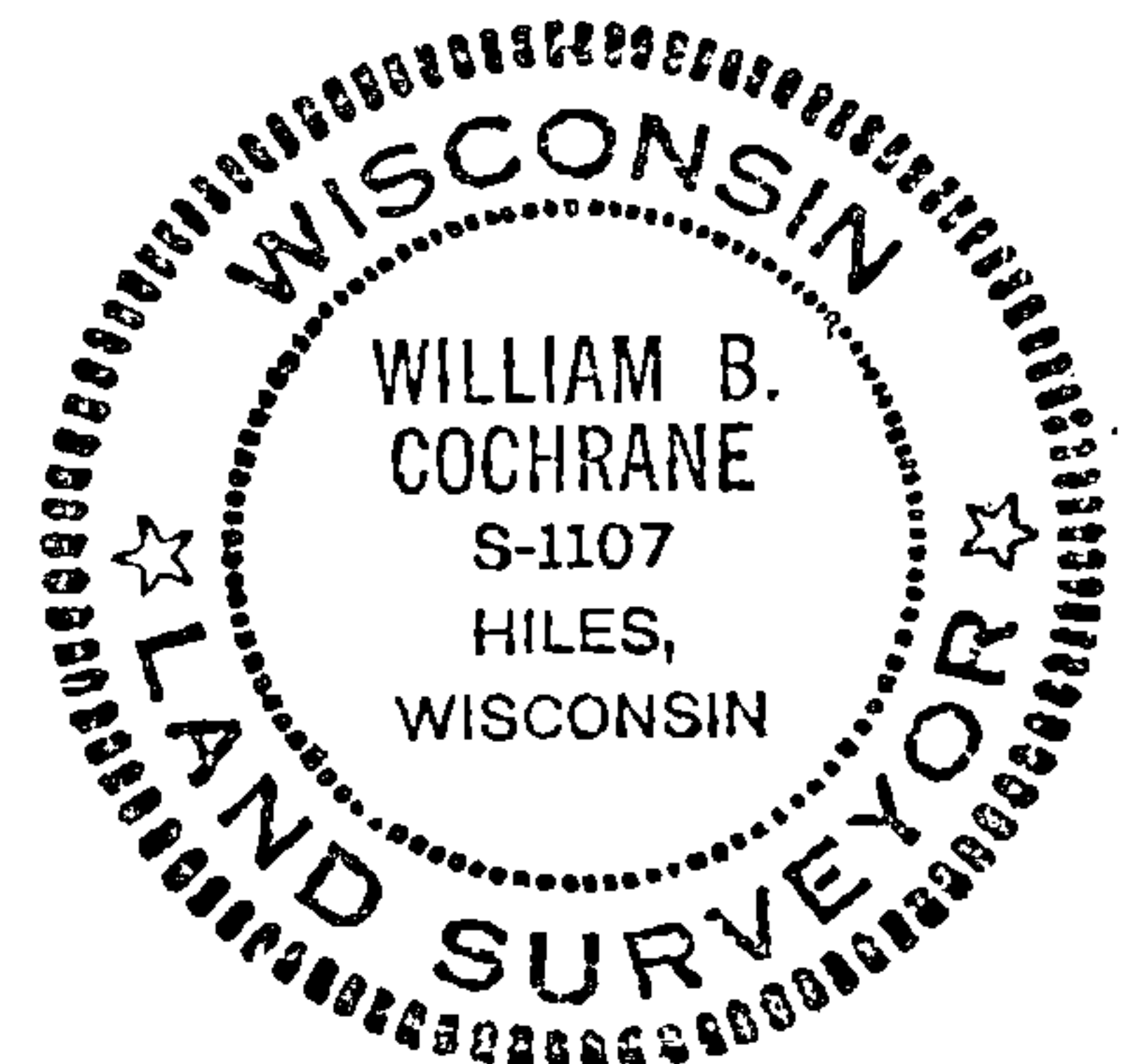
Surveyed by Alfred Millard in June, 1858
North between sections 25 and 30. 40.0 chains set quarter section post between sections 25 and 30.
Yellow birch, 18", N.76°E., 5 links
Fir, 9", S.85°W., 6 links

Description of corner evidence found:

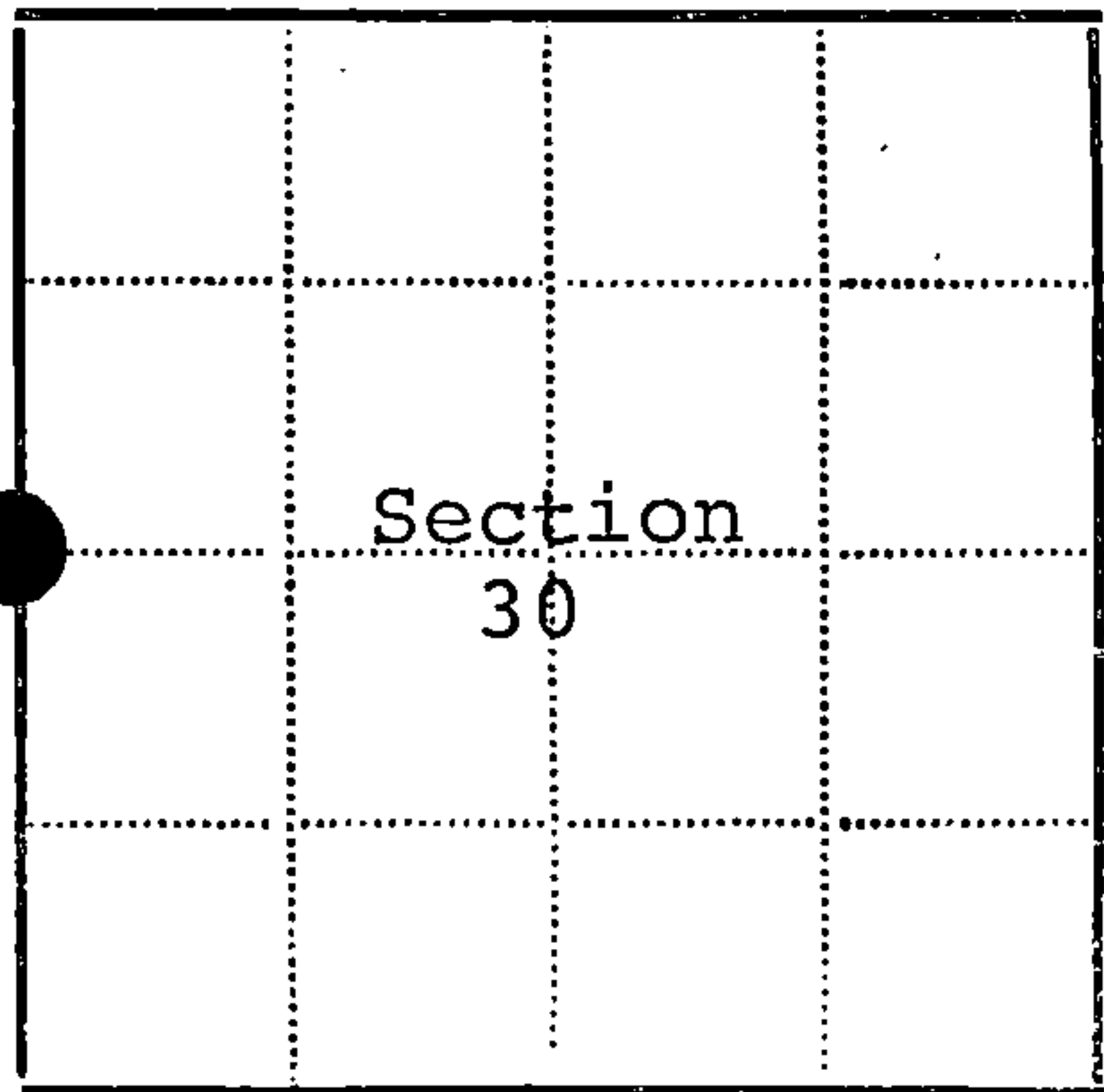
3" x 3" scribed cedar post, in place
Yellow birch, stump hole, N.80°E., 5 lks.
No evidence of Fir.
South 40.0 chains, section corner common to section 25, 30, 31 and 36.

Description of monument and accessories I established to perpetuate the location of this corner:

On July 8, 1976, I replaced the post with a 2 inch inside diameter, galvanized pipe, 3 feet long, filled with concrete with a brass cap stamped:
T39N, R13E, R14E, 1/4, S25, S30, 1976, S-1107
From which the following bear:
Maple, 10", S.45°E., 39.52 feet
Maple, 8", N.10°W., 18.43 feet
Set a steel sign post east of the monument, 0.50 feet



4-39-13-25-2000



● - Corner monument restored
□ -

Resident witnesses.....

Dated at Laona Wisconsin, this 6 day of October 1976

Signature William B. Cochrane Title Survey Technician
(County Surveyor, Registered Land Surveyor, or other duly authorized official)

Surveyors Registration No. S-1107 DOCUMENT NUMBER 110925

Office of Register of Deeds County of Forest

I hereby certify that the within instrument was filed in this office for record on the 31st day of January 1977, and was filed in Book No. Page No. of County Records.

Signature Eugene Stutzman Title Register of Deeds

Township 39 North, Range 14 East, Section 30, Index No. T-1, Page No.

U.S. PUBLIC LAND SURVEY MONUMENT RECORD

Index No. T-25

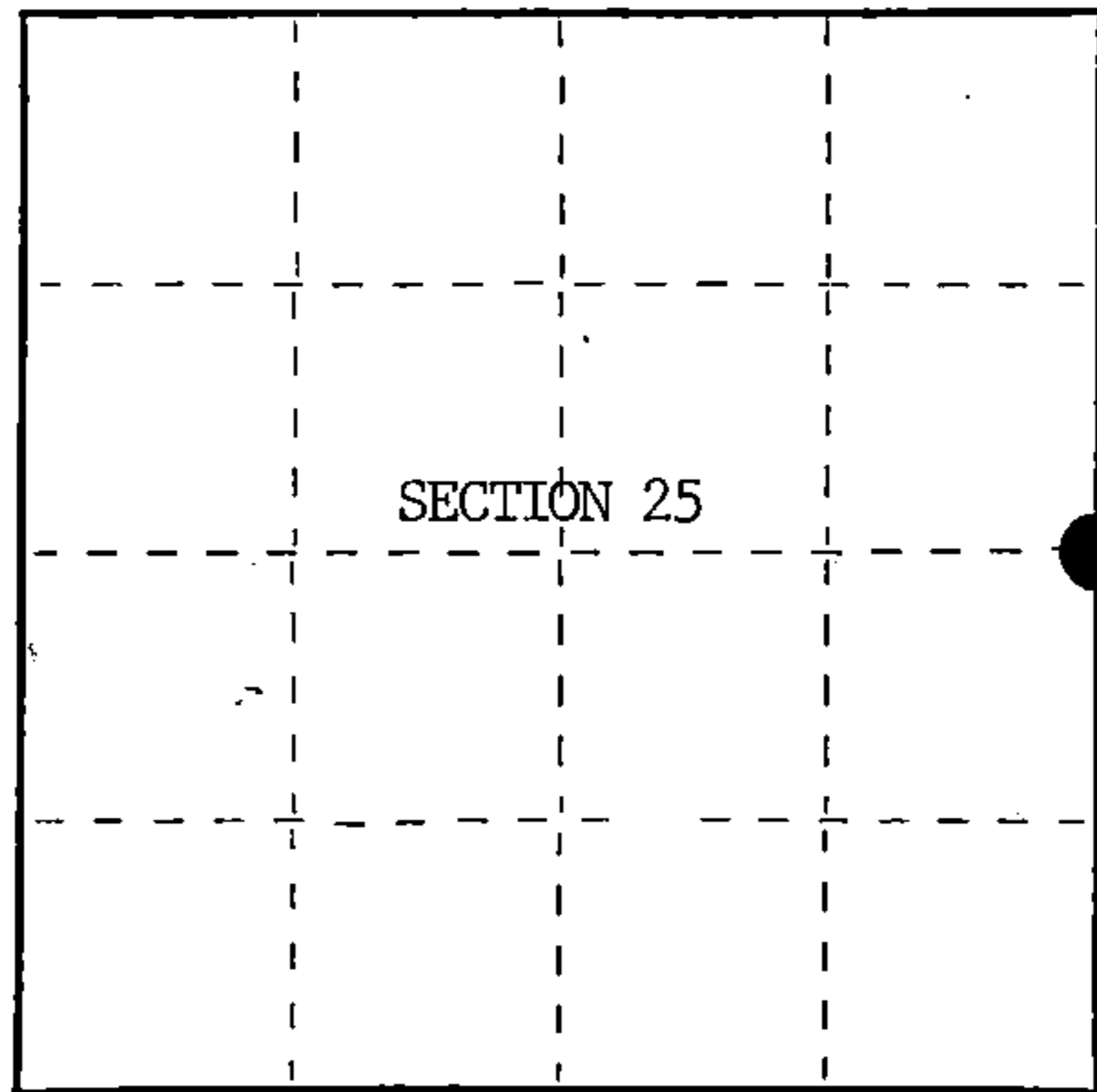
State of Wisconsin }
County of Forest } ss.

I William B. Cochrane, do hereby certify that on the 20th day of August, 1985, I found evidence of the East Quarter corner of Section 25 Township 39, North, Range 13 East, Fourth Principal Meridian, as described hereon; and that from this evidence I established a new monument and accessories as described hereon to perpetuate the original location of this corner.

Resident witnesses:

David Brownell

State Plane Co-ordinates
N- 244,657.9120
E-2,305,983.4790



○ = Corner monument restored.

History of original corner establishment:

Original Government Survey in 1858 by Alfred Millard.

Corner restored on July 17th, 1976, by William B. Cochrane, a Registered Land Surveyor with the U.S. Forest Service.

See Certified Land Corner Restoration Certificate #110925, filed in the Registrar of Deeds Office, in the Forest County Courthouse.

Description of corner evidence found:

Monument as described and in place, from which the following bear;

Maple	10"	S45°E	39.52 feet-Cut down for Aerial Photo Project
Maple	9"	N10°W	18.43 feet-Cut down for Aerial Photo Project
Steel Sign Post		East	0.50 feet

Description of monument and accessories I established to perpetuate the original location of this corner.

Blazed and scribed the following new bearing trees;

Maple	6"	S24°W	44.38 feet
Maple	7"	N66°W	64.58 feet

Re-set Steel Sign Post SE 2.00 feet

Dated at Hiles, Wis., this 16th day of January, 1986

Signature William B. Cochrane Title Land Surveyor Registration No. S-1107
(County Surveyor, Registered Land Surveyor, or other duly authorized official)

Office of Register of Deeds, County of Forest, I hereby certify that the within instrument was filed in this office for record on the 11th day of March, 1987 at 3:30 o'clock P. M.

Paul Aschenbrenner
(Register of Deeds)

By _____ Deputy

FORM NO. 985-A

H.C. Miller Company
Bismarck, N.D.

Stock No. 26273

DOCUMENT NUMBER 132307

43913252000

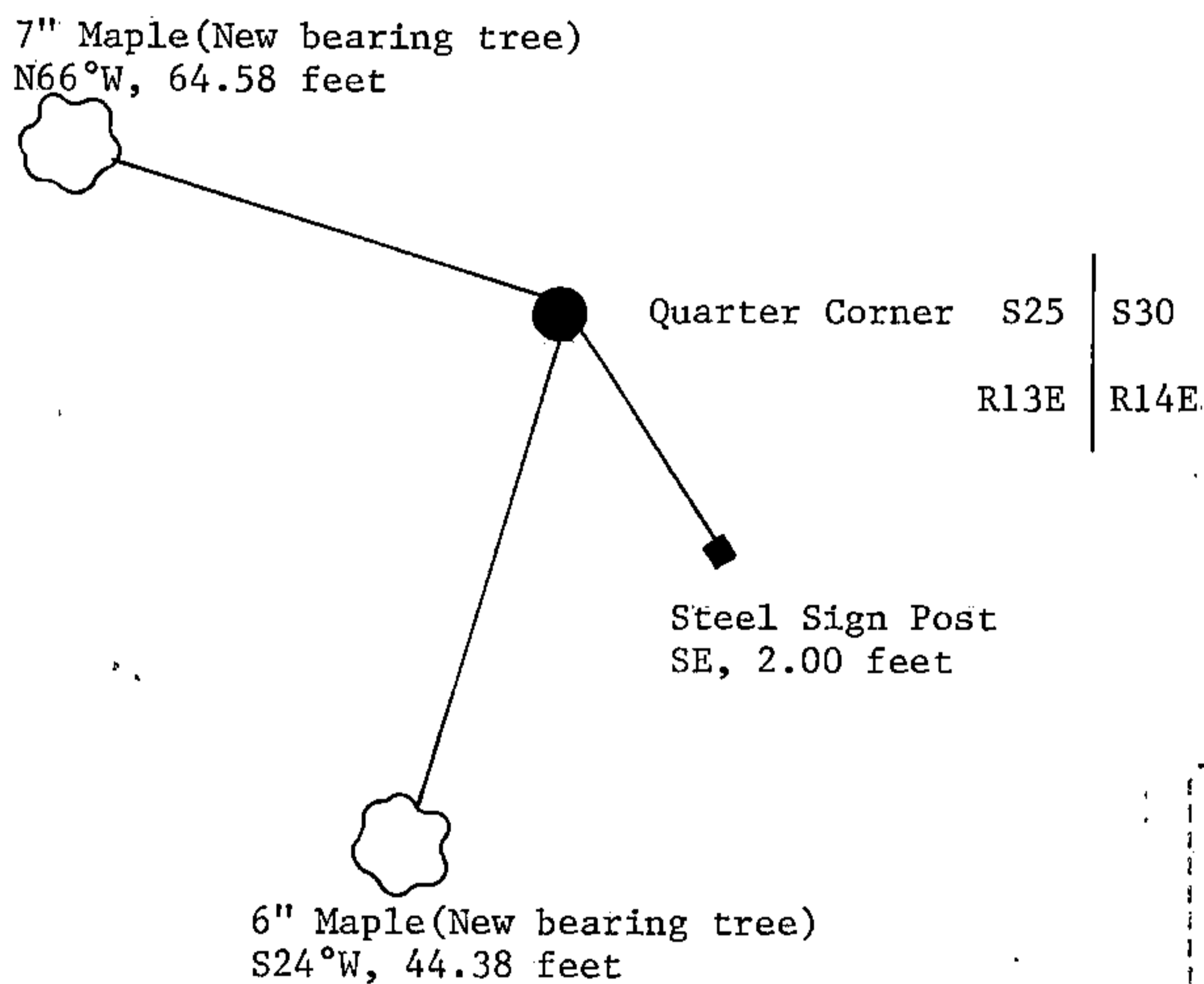
(e) Describe any material discrepancy between the location of the corner as restored or reestablished and the location of that corner as previously restored or reestablished by distance and direction. Show the discrepancy on the plan view drawing under (d), above. Show the distances between the corner as previously restored or reestablished and (1) the corner as restored or reestablished, and (2) to at least 2 of the witness monuments shown on the drawing in (d), above.

See drawing below.

(f) Was the corner restored through acceptance of (1) an obliterated evidence location, or, (2) a found perpetuated location?

Restored through acceptance of a found perpetuated location.

(g&h) Was the corner reestablished through lost corner proportionate methods? If so, show the method, including the directions and distances to other public land survey corners used as evidence or used for proportioning in determining the corner location?



William B. Cochrane

(i) I, William B. Cochrane
[type or print name] certify that the corner location shown on this record was determined by me or under my direction and control and that this U.S. Public Land Survey Monument Record is correct and complete to the best of my knowledge and belief.

William B. Cochrane October 7, 1986
Signature Date

Survey requested by: Edward [Signature] 3-9-87
District Ranger Date

U.S. PUBLIC LAND SURVEY MONUMENT RECORD

Index No. T-1

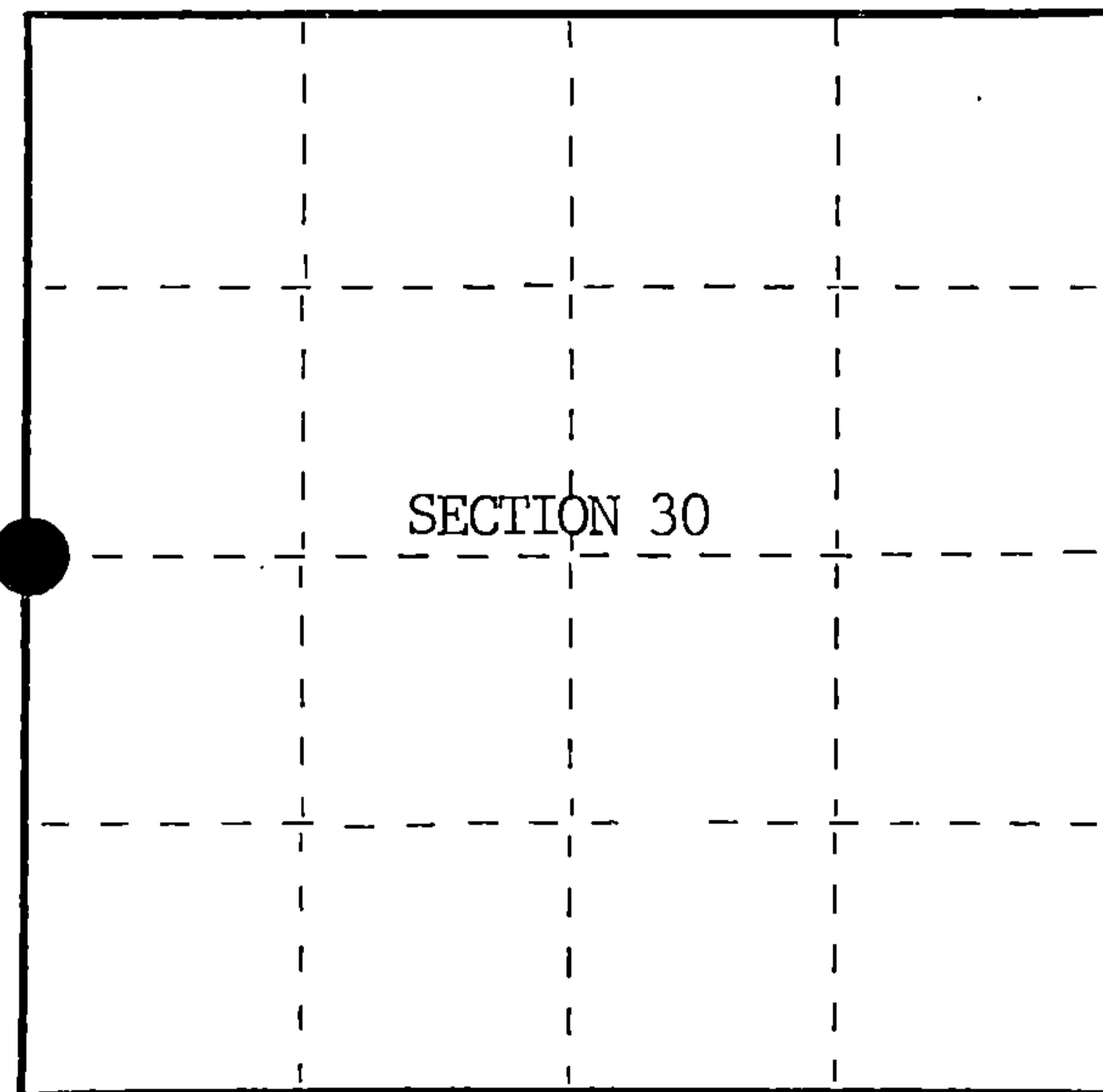
State of Wisconsin }
County of Forest } ss.

I, William B. Cochrane, do hereby certify that on the 20th day of August, 1985, I found evidence of the West Quarter corner of Section 30 Township 39 North, Range 14 East, Fourth Principal Meridian, as described hereon; and that from this evidence I established a new monument and accessories as described hereon to perpetuate the original location of this corner.

Resident witnesses:

David Brownell

State Plane Co-ordinates
N- 244,657.9120
E-2,305,983.4790



○ = Corner monument restored.

History of original corner establishment:

Original Government Survey in 1858 by Alfred Millard.

Corner restored on July 7th, 1976, by William B. Cochrane, a Registered Land Surveyor with the U.S. Forest Service.

See Certified Land Corner Restoration Certificate #110925, filed in the Registrar of Deeds Office, in the Forest County Courthouse.

Description of corner evidence found:

Monument as described and in place, from which the following bear;

Maple	10"	S45°E	39.52 feet	Bearing trees cut down for Aerial Photo Project.
Maple	9"	N10°W	18.43 feet	
Steel Sign Post		East	0.50 feet	

Description of monument and accessories I established to perpetuate the original location of this corner.

Blazed and scribed the following new bearing trees;

Maple	6"	S24°W	44.38 feet
Maple	7"	N66°W	64.58 feet
Re-set Steel Sign Post		SE	2.00 feet

Dated at Hiles, Wis., this 16th day of January, 1986

Signature: William B. Cochrane Title: Land Surveyor Registration No. S-1107
(County Surveyor, Registered Land Surveyor, or other duly authorized official)

Office of Register of Deeds, County of Forest, I hereby certify that the within instrument was filed in this office for record on the 11th day of March, 1987 at 3:30 o'clock P. M.

Paul Aschenbrenner
(Register of Deeds)

By Deputy

FORM NO. 985-A

H.C. Miller Company

Stock No. 26273

DOCUMENT NUMBER 132384

43913252900

(e) Describe any material discrepancy between the location of the corner as restored or reestablished and the location of that corner as previously restored or reestablished by distance and direction. Show the discrepancy on the plan view drawing under (d), above. Show the distances between the corner as previously restored or reestablished and (1) the corner as restored or reestablished, and (2) to at least 2 of the witness monuments shown on the drawing in (d), above.

See Drawing below.

(f) Was the corner restored through acceptance of (1) an obliterated evidence location, or, (2) a found perpetuated location?

Restored through acceptance of a found perpetuated location.

(g&h) Was the corner reestablished through lost corner proportionate methods? If so, show the method, including the directions and distances to other public land survey corners used as evidence or used for proportioning in determining the corner location?

7" Maple (New bearing tree)
N66°W, 64.58 feet



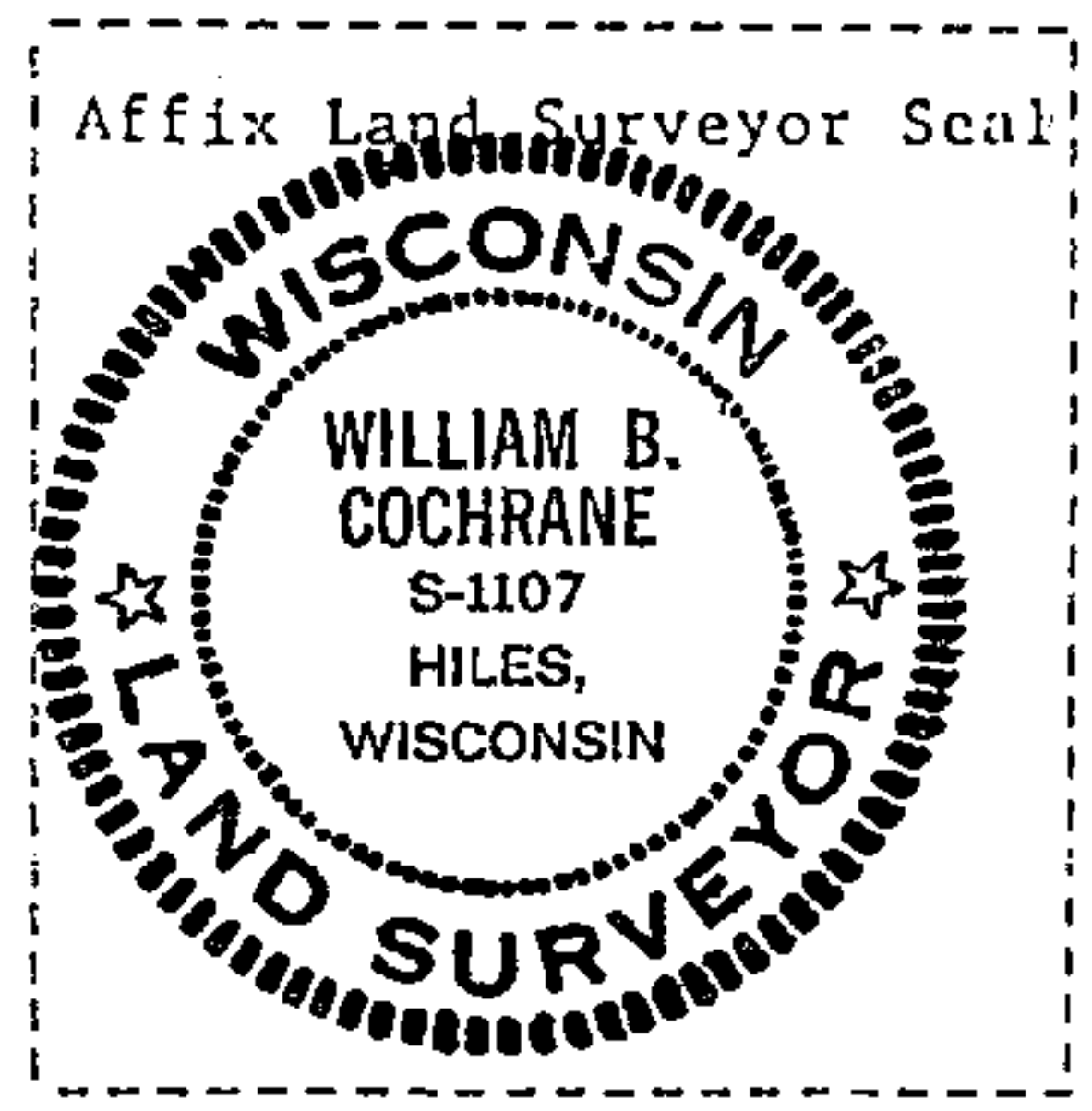
R13E	R14E
S25	S30

Quarter Corner

Steel Sign Post
SE, 2.00 feet



6" Maple (New bearing tree)
S24°W, 44.38 feet



(i) I, William B. Cochrane
(type or print name) certify that the corner location shown on this record was determined by me or under my direction and control and that this U.S. Public Land Survey Monument Record is correct and complete to the best of my knowledge and belief.

William B. Cochrane October 7, 1986
Signature Date

Survey requested by; Edward [Signature] 3-9-87
District Ranger Date