

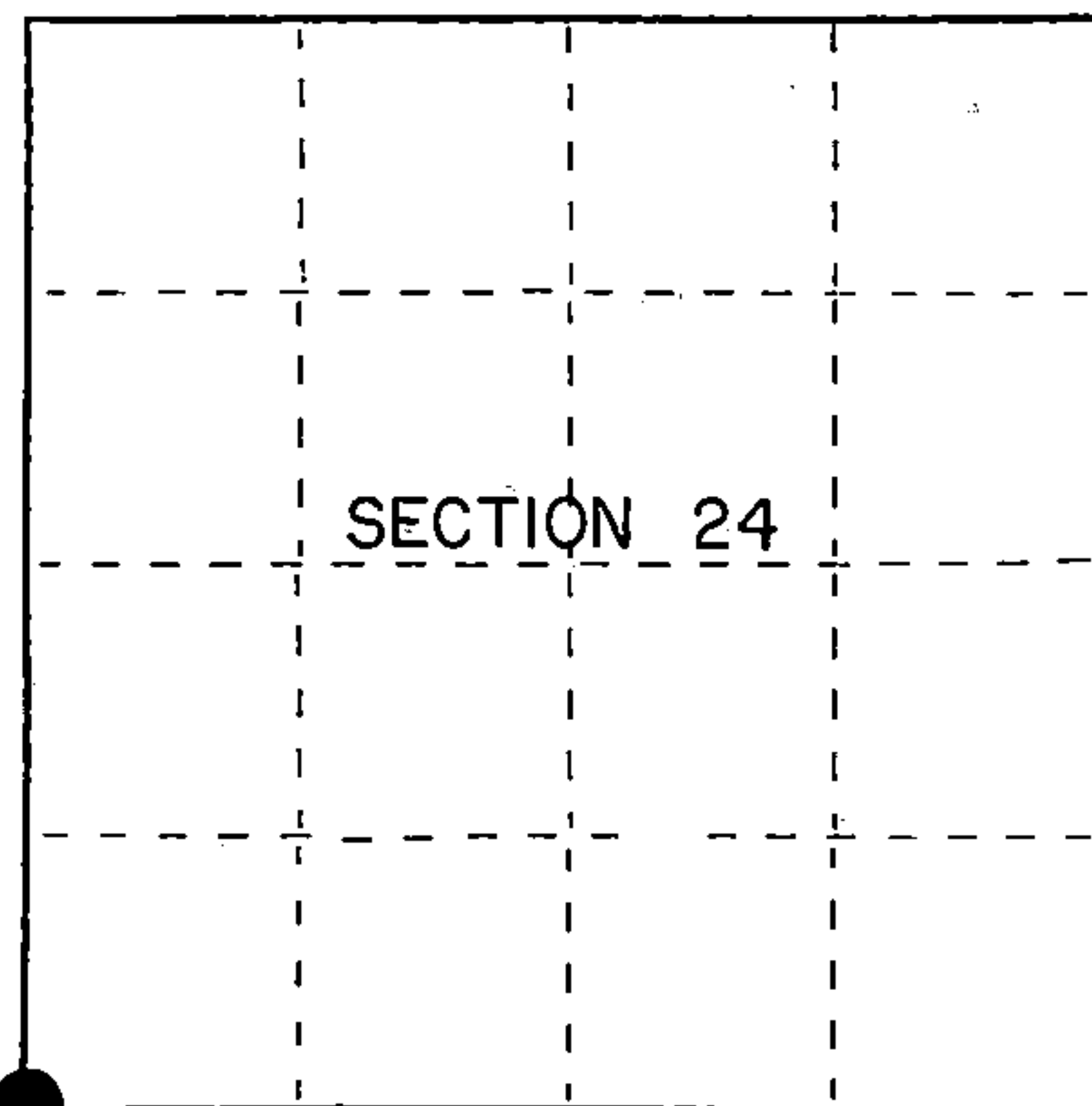
U.S. PUBLIC LAND SURVEY MONUMENT RECORD

Index No. R-21

State of Wisconsin }
County of Forest } ss.

I Gary L. Pisoni, do hereby
certify that on the 15th day
of August, 1990, I found
evidence of the Southwest Section
corner of Section 24
Township 39, North, Range
13 East, Fourth Principal Meridian,
as described hereon; and that from this evidence
I established a new monument and accessories
as described hereon to perpetuate the original
location of this corner.

Resident witnesses:



● = Corner monument restored.

History of original corner establishment:

Original Government Survey in 1865 by William E. Daugherty and Alex McDill.
North between Sections 25 and 26, at 80.00 chains, set Section Corner Post
to Sections 23, 24, 25 and 26, from which the following bear;

Sugar	14"	S79°E	31 lks.
Birch	12"	N34°E	26 lks.

Description of corner evidence found:

No original corner evidence was recovered.

I re-established the corner position using the projected center-line of Hwy #55 to the
South, and the projection of the East ½ of the South Section Line of Section 24.

Corner position is approximately 1 foot West of the West edge of blacktop of State
Hwy #55.

Description of monument and accessories I established to perpetuate the original location of this corner.

At the corner position, Set a 2½ inch diameter aluminum pipe monument, 3 feet long,
6 inches below the surface of the shoulder, with an aluminum cap stamped; T39N, R13E,
S23, S24, S25, S26, 1990, S-1634. From which the following new blazed and scribed
bearing trees bear; (all measurements taken to a nail in side of tree)

S. Maple	7"	S36°W	53.63 feet
Red Maple	8"	N81°W	41.81 feet
S. Maple	8"	N44°W	36.95 feet
Balsam	8"	N89°E	55.22 feet
Steel Sign Post		West	16.60 feet

Dated at Iron River, MI, this 8th day of December, 1990

Signature Gary L. Pisoni Title Land Surveyor Registration No S-1634
(County Surveyor, Registered Land Surveyor, or other duly authorized official)

Office of Register of Deeds, County of Forest, I hereby certify that the within
instrument was filed in this office for record on the 10th day of March, 1993
at 10:45 o'clock A. M.

Paul Aschenbrenner
(Register of Deeds)

By _____ Deputy

FORM NO. 985-A

H.C. Miller Company
CHICAGO, ILLINOIS

Stock No. 26273
146923

43913230000

(e) Describe any material discrepancy between the location of the corner as restored or reestablished and the location of that corner as previously restored or reestablished by distance and direction. Show the discrepancy on the plan view drawing under (d), above. Show the distances between the corner as previously restored or reestablished and (1) the corner as restored or reestablished, and (2) to at least 2 of the witness monuments shown on the drawing in (d), above.

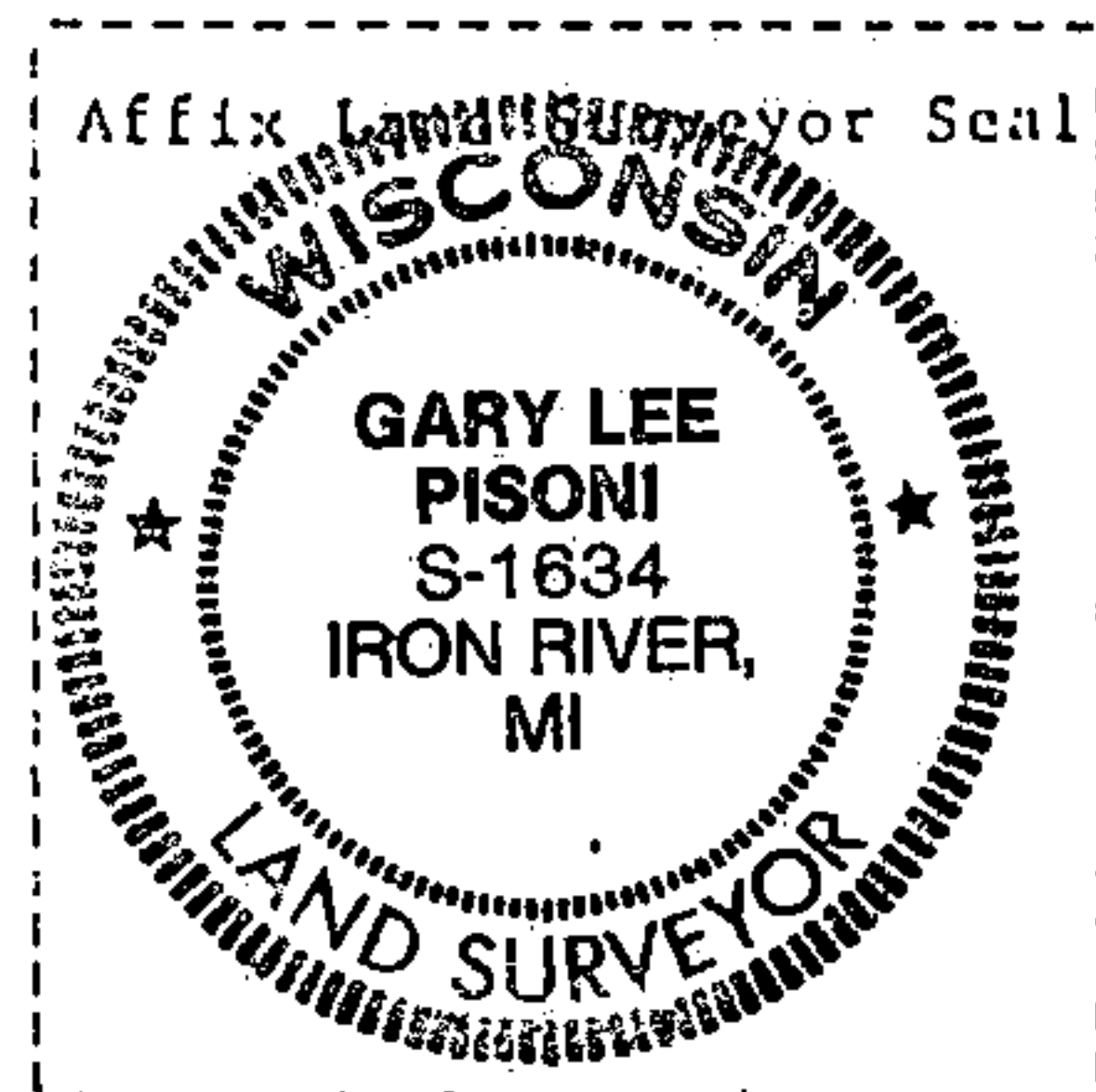
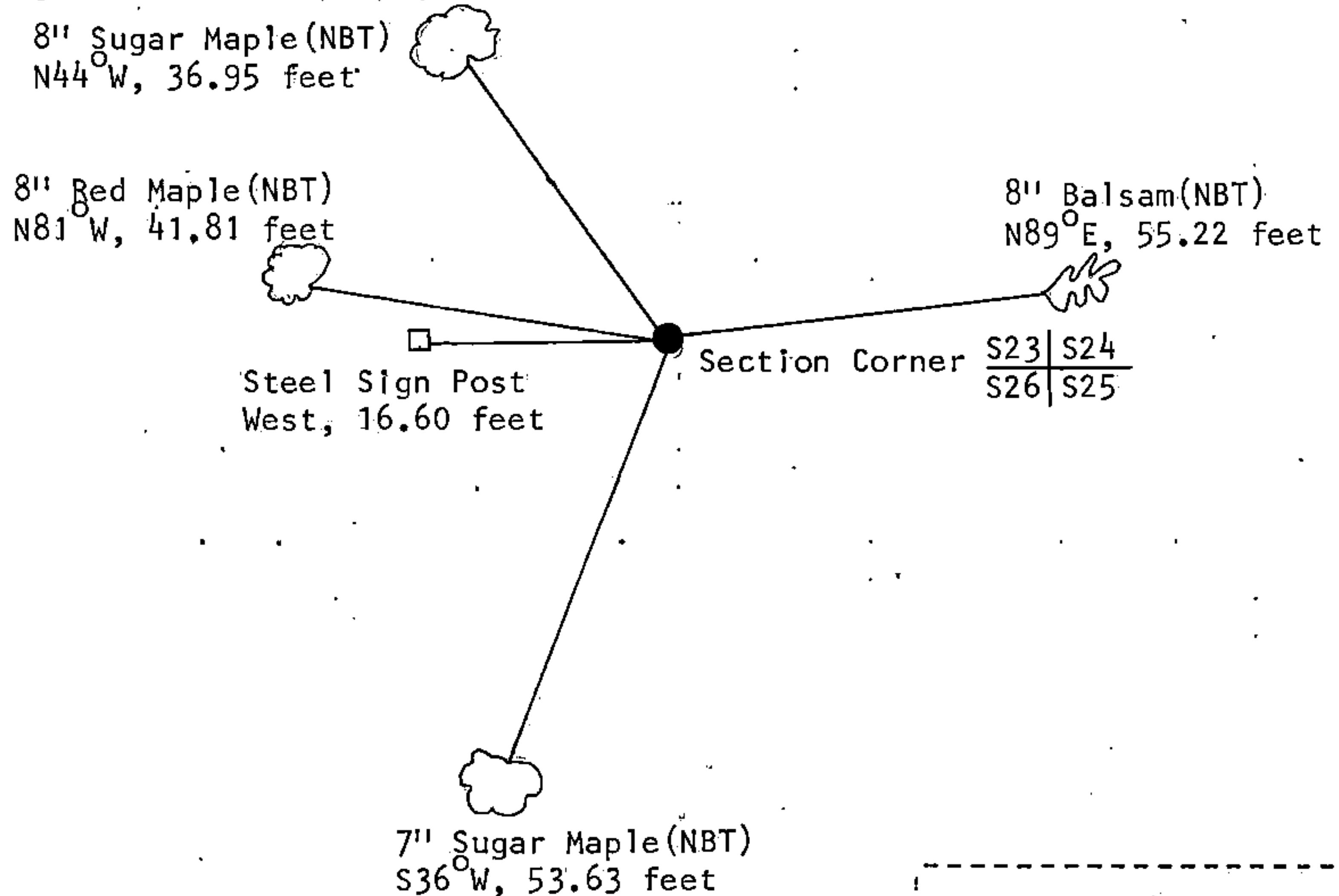
See drawing below.

(f) Was the corner restored through acceptance of (1) an obliterated evidence location, or, (2) a found perpetuated location?

Restored through lost corner proportionate methods.

(g&h) Was the corner reestablished through lost corner proportionate methods? If so, show the method, including the directions and distances to other public land survey corners used as evidence or used for proportioning in determining the corner location?

Re-established through lost corner proportionate methods.



(i) I, Gary L. Pisoni
(type or print name) certify that the corner location shown on this record was determined by me or under my direction and control and that this U.S. Public Land Survey Monument Record is correct and complete to the best of my knowledge and belief.

Signature

Date

Survey requested by;

District Ranger

Date