

Stock No. 26273

158089

U.S. PUBLIC LAND SURVEY MONUMENT RECORD

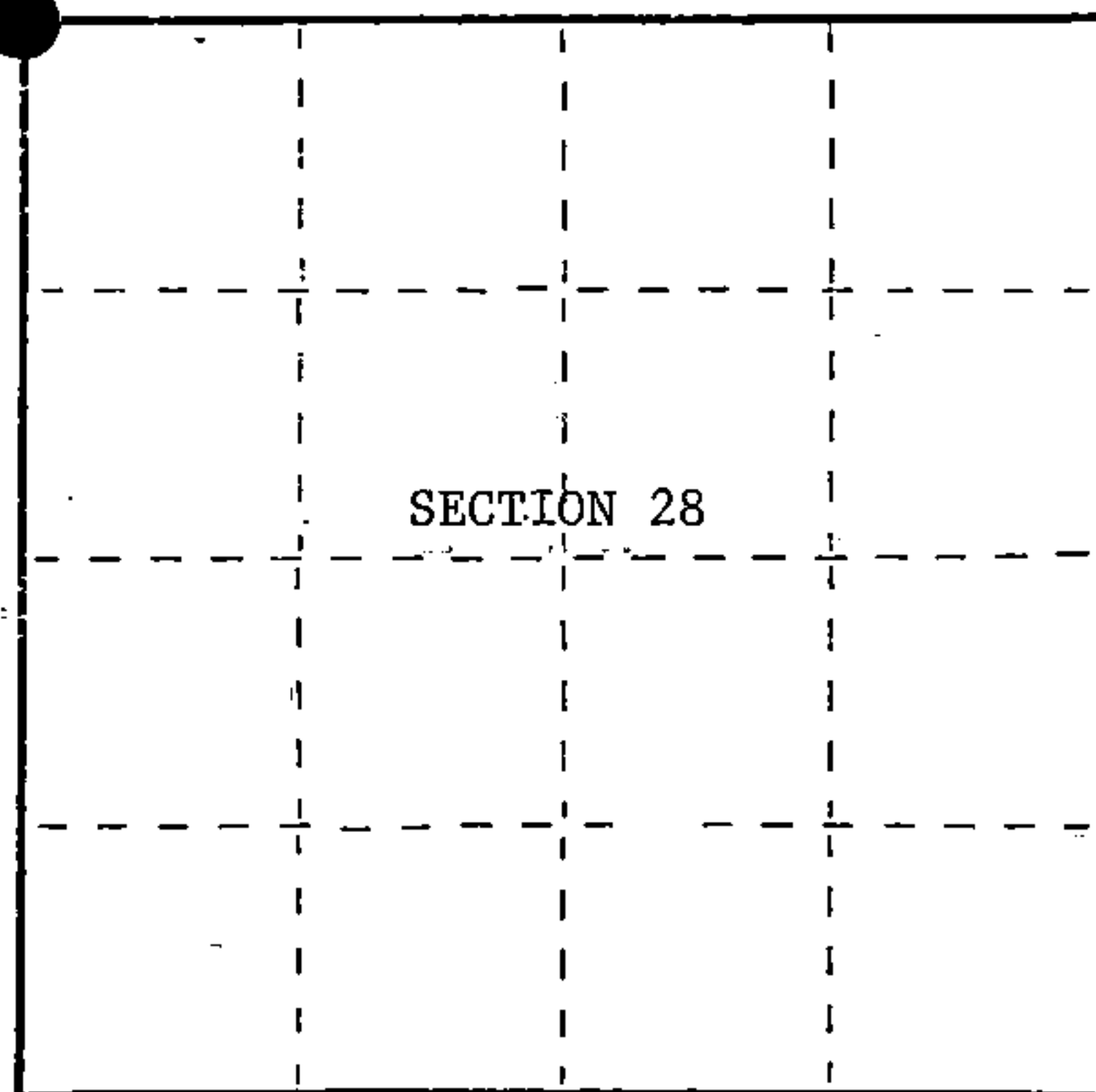
Index No. R-9

State of Wisconsin }
County of Forest } ss.

I William B. Cochrane, do hereby
certify that on the 12th day
of November, 1995, I found
evidence of the Northwest
corner of Section
Township 39, North, Range
13 East, Fourth Principal Meridian,
as described hereon; and that from this evidence
I established a new monument and accessories
as described hereon to perpetuate the original
location of this corner.

Resident witnesses:

Tony Tillman



● = Corner monument restored.

History of original corner establishment:

Original Government survey by William E. Daugherty in 1865..

North between sections 28 and 29. At 80 chains set section post from which
the following bear:

Sugar	10"	N19°E	16 lks
Sugar	12"	S42°W	32 lks

Description of corner evidence found:

No original corner evidence was found.

I re-established the corner position using double proportionate survey methods
from the adjacent section corners.

Description of monument and accessories I established to perpetuate the original location of this corner.

At the double proportionate position I set a 2½ diameter by 36 inch long aluminum
pipe monument 30 inches in the ground with an aluminum cap stamped: T39N, R13E,
S20, S21, S28, S29, 1995, S-1107 from which the following bear:

Aspen	4"	N60°E	5.30 feet
Aspen	5"	S70°E	6.58 feet
Aspen	6"	S58°W	6.46 feet
Aspen	4"	N58°W	7.25 feet
Steel sign post		South	0.50 feet

Dated at Hiles, Wis., this 12th day of November, 1995.

Signature William B. Cochrane Title Land Surveyor Registration No. S-1107
(County Surveyor, Registered Land Surveyor, or other duly authorized official)

Office of Register of Deeds, County of Forest, I hereby certify that the within
instrument was filed in this office for record on the 20th day of March, 1997
at 1:30 o'clock P M.

(Register of Deeds)

By

John J. Tinkering

Deputy

4391320000

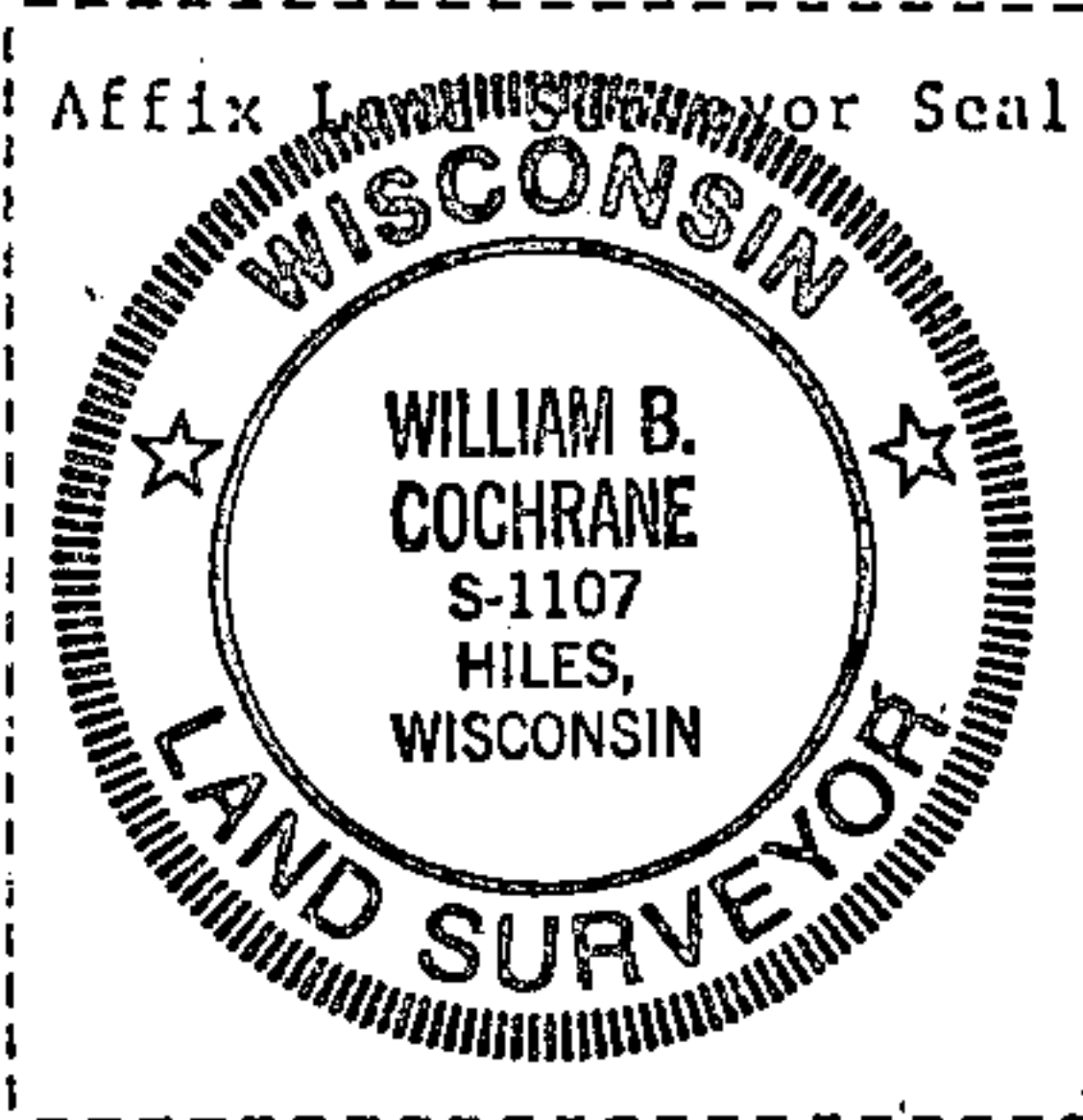
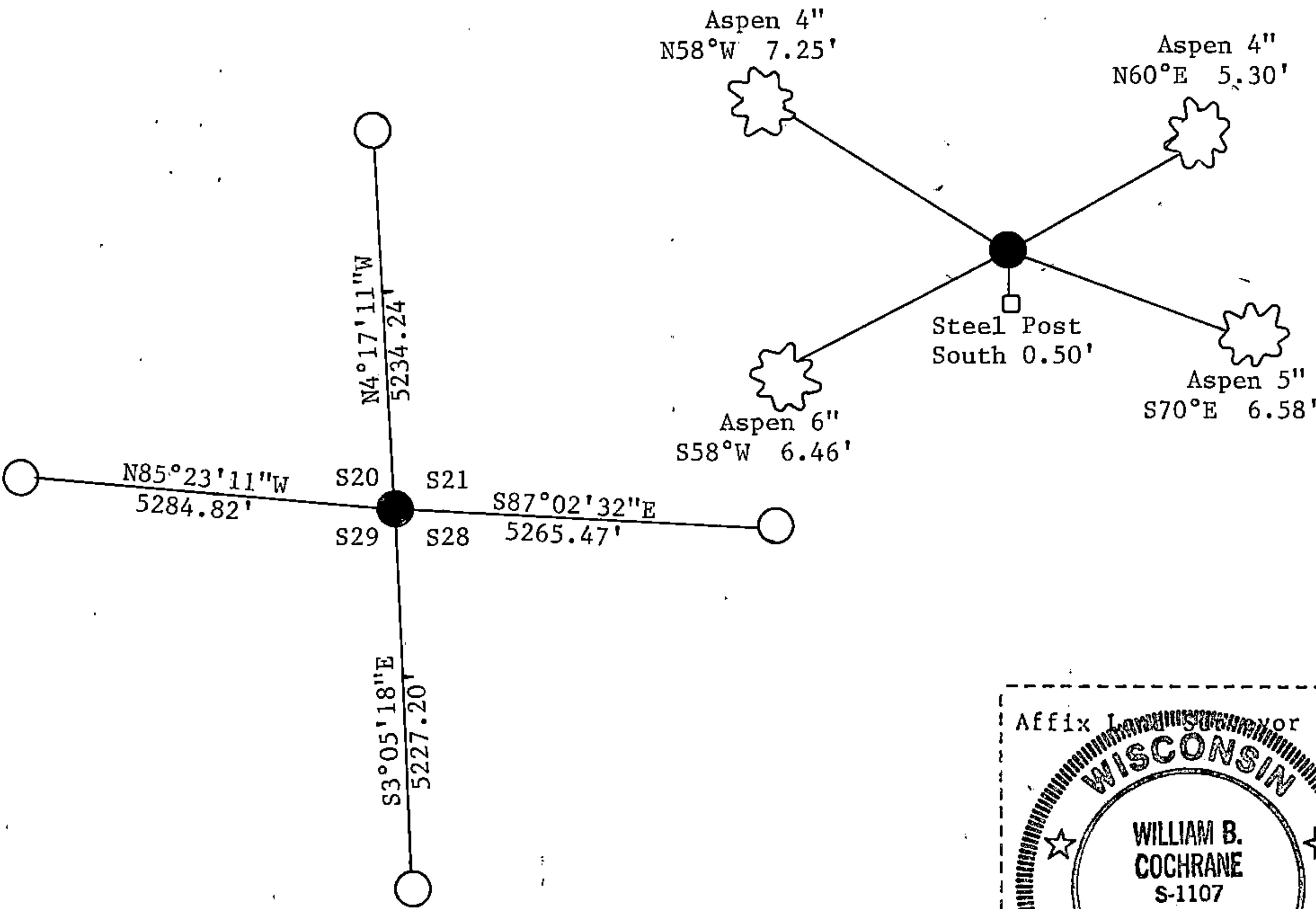
(e) Describe any material discrepancy between the location of the corner as restored or reestablished and the location of that corner as previously restored or reestablished by distance and direction. Show the discrepancy on the plan view drawing under (d), above. Show the distances between the corner as previously restored or reestablished and (1) the corner as restored or reestablished, and (2) to at least 2 of the witness monuments shown on the drawing in (d), above.

See drawing below.

(f) Was the corner restored through acceptance of (1) an obliterated evidence location, or, (2) a found perpetuated location?

Re-established through lost corner double proportionate survey methods.

(g&h) Was the corner reestablished through lost corner proportionate methods? If so, show the method, including the directions and distances to other public land survey corners used as evidence or used for proportioning in determining the corner location?



William B. Cochrane

(i) I, William B. Cochrane (type or print name) certify that the corner location shown on this record was determined by me or under my direction and control and that this U.S. Public Land Survey Monument Record is correct and complete to the best of my knowledge and belief.

William B. Cochrane 11/12/95
Signature Date