



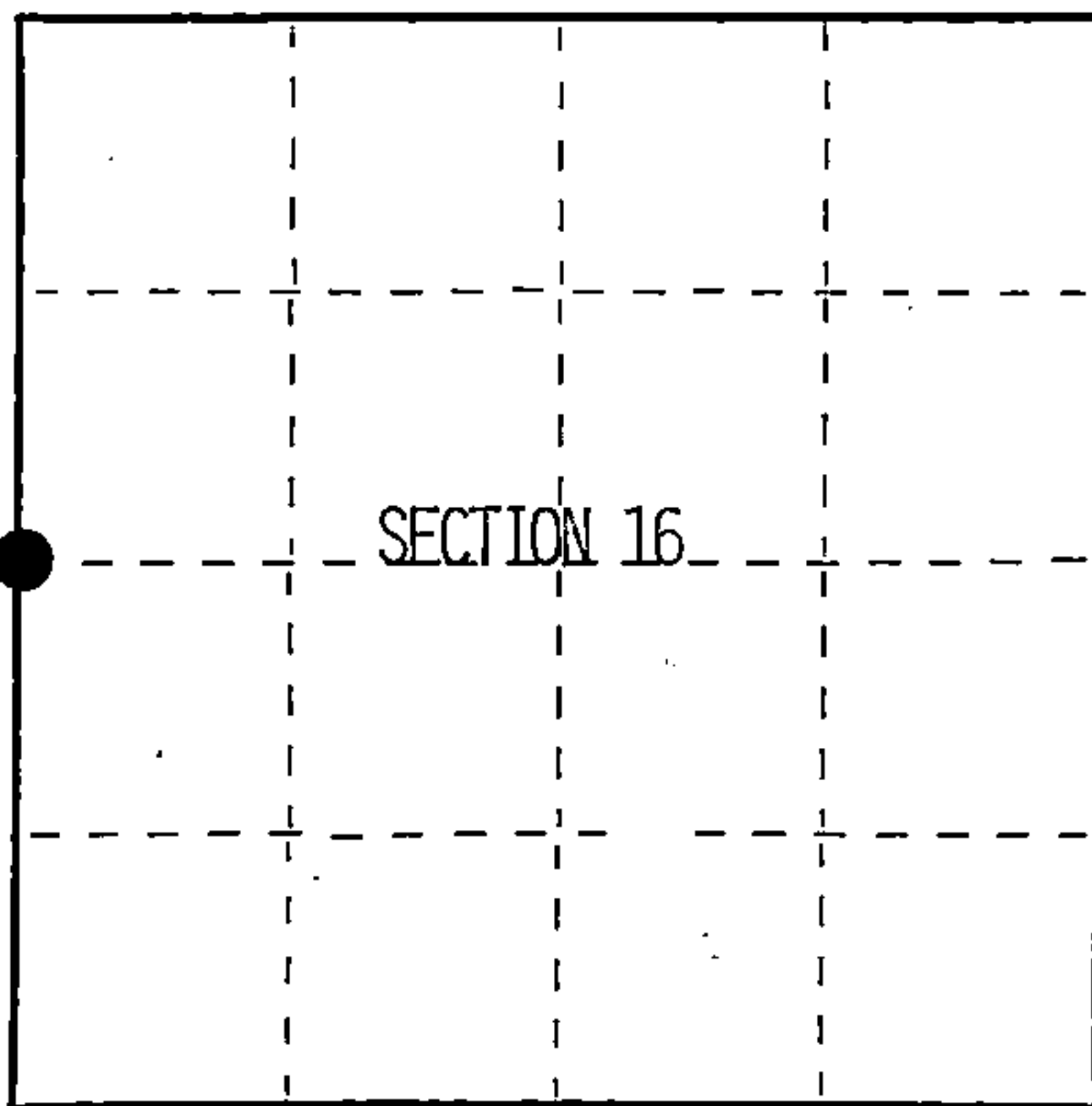
Stock No. 26273

156565

State of Wisconsin }  
County of Forest } ss.

I William B. Cochran, do hereby  
certify that on the 27th day  
of April, 1994, I found  
evidence of the West Quarter  
corner of Section 16  
Township 39, North, Range  
13 EAST, Fourth Principal Meridian,  
as described hereon; and that from this evidence  
I established a new monument and accessories  
as described hereon to perpetuate the original  
location of this corner.

Resident witnesses:



● = Corner monument restored.

## CERTIFIED LAND CORNER RESTORATION

Index No. L-9

## History of original corner establishment:

Original survey in 1865 by William E. Daugherty  
40 chains North between Sections 16 and 17 set Corner post. from which:

W. Pine	24"	N62°W	14 lks
Birch	15"	S71°E	17 lks

## Description of corner evidence found:

No original corner evidence found. No other corner evidence found.

## Description of monument and accessories I established to perpetuate the original location of this corner.

At proportionate distance and on line between the Northwest and Southwest Section  
Corners. Set a 2½X36" aluminum pipe monument 2½ feet in the ground with an aluminum  
cap stamped: T39N, R13E, 1/4, S16, S17, 1994, S-1107. From which:

W. Pine	14"	N09°E	10.16 feet
W. Pine	12"	S56°E	17.97 feet
Steel sign post		West	1.00 feet

Dated at Hiles, Wis., this 7th day of December, 1994

Signature William B. Cochran Title Land surveyor Registration No. 1107  
(County Surveyor, Registered Land Surveyor, or other duly authorized official)

Office of Register of Deeds, County of Forest, I hereby certify that the within  
instrument was filed in this office for record on the 23rd day of August, 1996  
at 2:30 o'clock P M.

(Register of Deeds)

By Paul Jankiewicz Deputy

43913172000

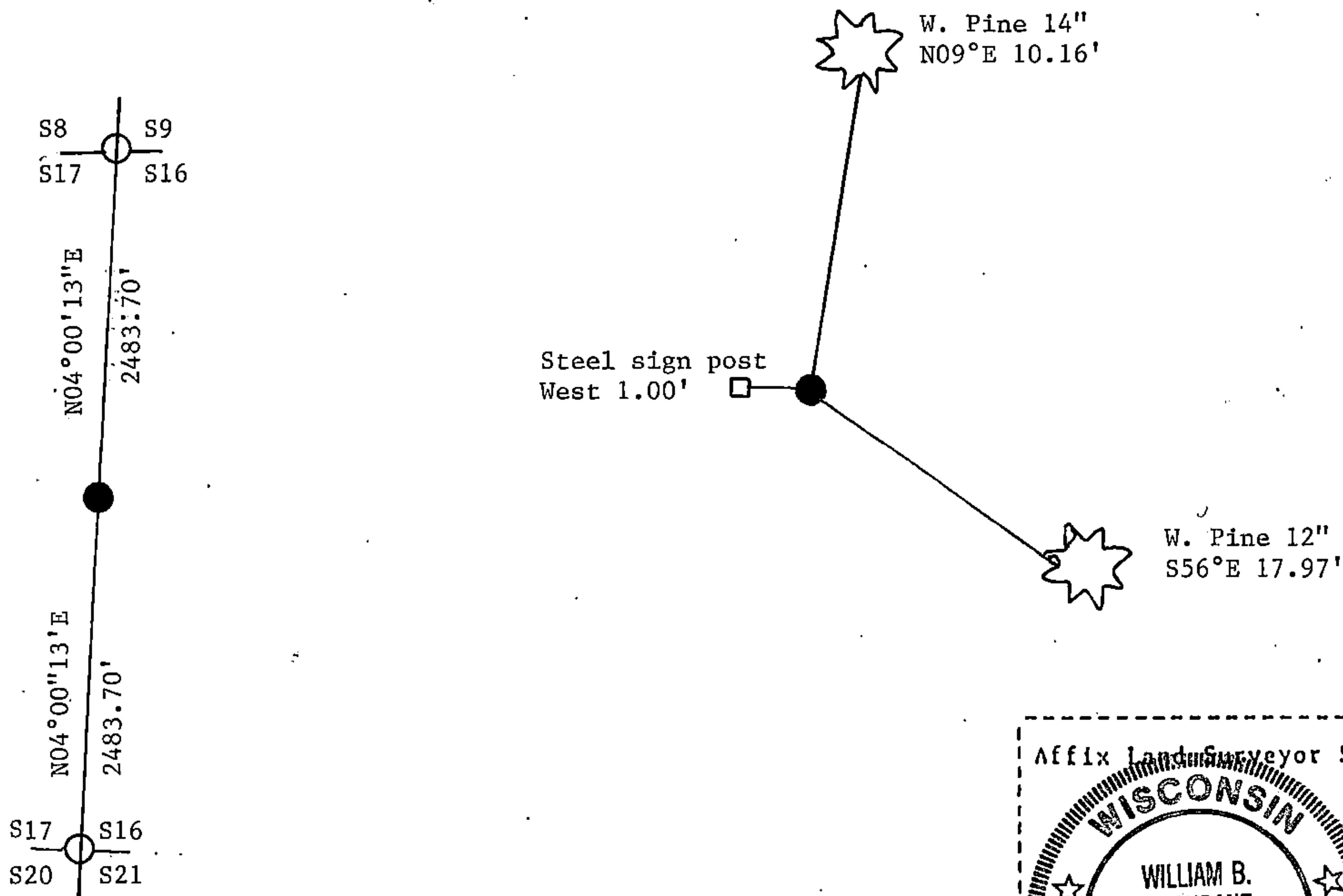
4) Describe any material discrepancy between the location of the corner as restored or reestablished and the location of that corner as previously restored or reestablished by distance and direction. Show the discrepancy on the plan view drawing under (d), above. Show the distances between the corner as previously restored or reestablished and (1) the corner as restored or reestablished, and (2) to at least 2 of the witness monuments shown on the drawing in (d), above.

See drawing below.

(f) Was the corner restored through acceptance of (1) an obliterated evidence location, or, (2) a found perpetuated location?

Re-established through lost corner proportionate methods.

(g+h) Was the corner reestablished through lost corner proportionate methods? If so, show the method, including the directions and distances to other public land survey corners used as evidence or used for proportioning in determining the corner location?



William B. Cochrane

(i) I, William B. Cochrane (type or print name) certify that the corner location shown on this record was determined by me or under my direction and control and that this U.S. Public Land Survey Monument Record is correct and complete to the best of my knowledge and belief.

William B. Cochrane  
Signature

12/7/94  
Date

Survey requested by: \_\_\_\_\_  
District Ranger Date

