

CERTIFIED LAND CORNER RESTORATION

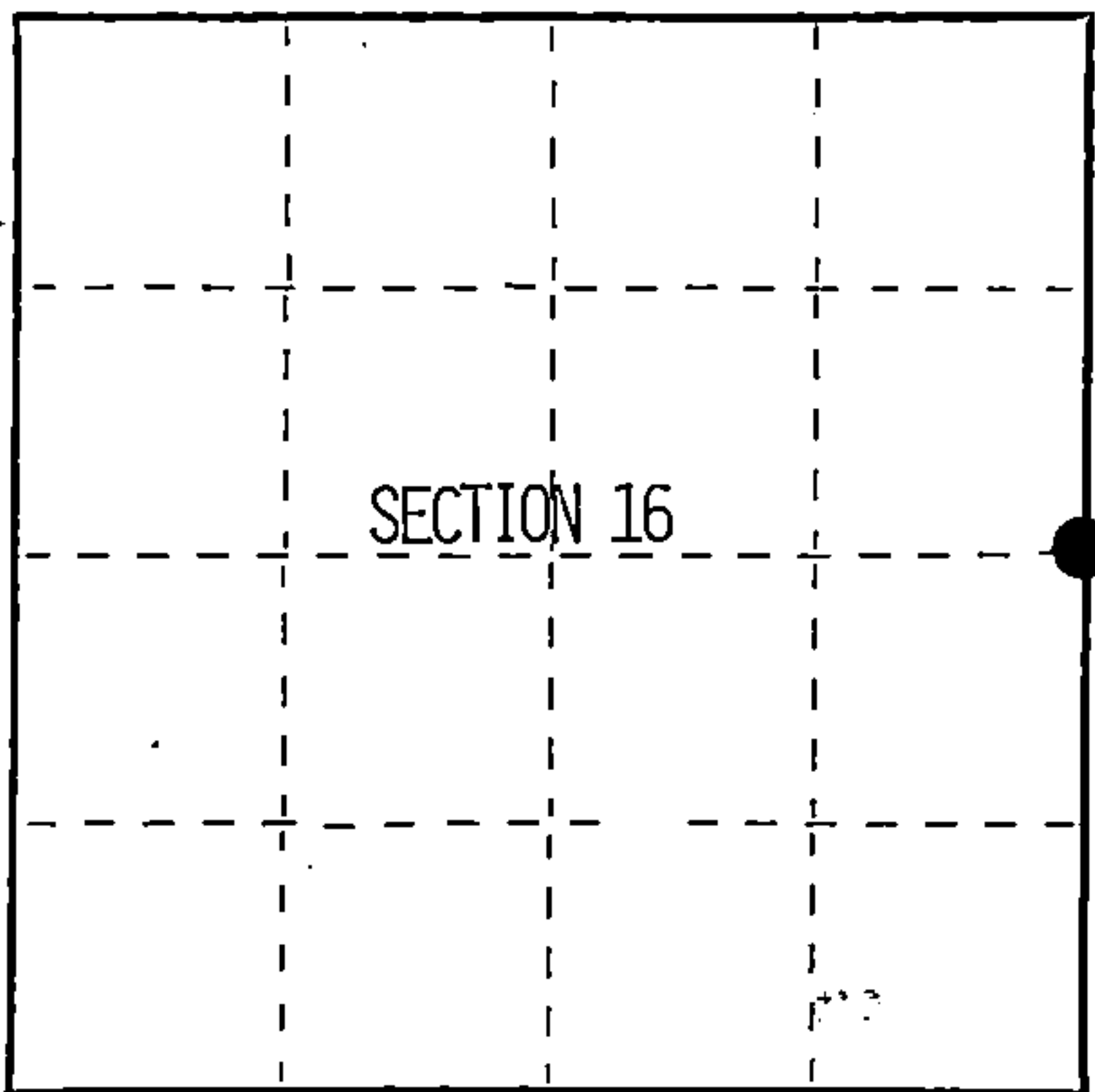
Index No. L-13

State of Wisconsin }  
County of Forest } ss.

I William B. Cochran, do hereby certify that on the 26th day of July, 1994, I found evidence of the East Quarter corner of Section 16 Township 39, North, Range 13 East, Fourth Principal Meridian, as described hereon; and that from this evidence I established a new monument and accessories as described hereon to perpetuate the original location of this corner.

Resident witnesses:

.....  
.....  
.....



● = Corner monument restored.

History of original corner establishment:

Original survey in 1865 by William E. Daugherty  
At 40 chains North between Sections 15 and 16 set corner post. From which:  
Elm 10" N57°E 28 lks  
Lynn 8" S12°W 9 lks

Description of corner evidence found:

No original corner evidence found. No other corner evidence found.

Description of monument and accessories I established to perpetuate the original location of this corner.

At proportionate distance and on line between the Northeast and Southeast Section corners, set a 2½"X36" aluminum pipe monument 2½ feet in the ground with an aluminum cap stamped: T39N, R13E, 1/4, S15, S16, 1994, S-1107. from which:  
Maple 11" N29°E 9.15 feet  
Maple 10" S78°E 12.80 feet  
Steel sign post East 1.00 feet

Dated at Hiles, Wis., this 7th day of December, 1994.

Signature William B. Cochran Title Land Surveyor Registration No. S-1107  
(County Surveyor, Registered Land Surveyor, or other duly authorized official)

Office of Register of Deeds, County of Forest, I hereby certify that the within instrument was filed in this office for record on the 23rd day of August, 1994 at 2:30 o'clock P M.

(Register of Deeds)

By Paul Tomkiewicz Deputy

FORM NO. 985-A



Stock No. 26273

156566

43913102000

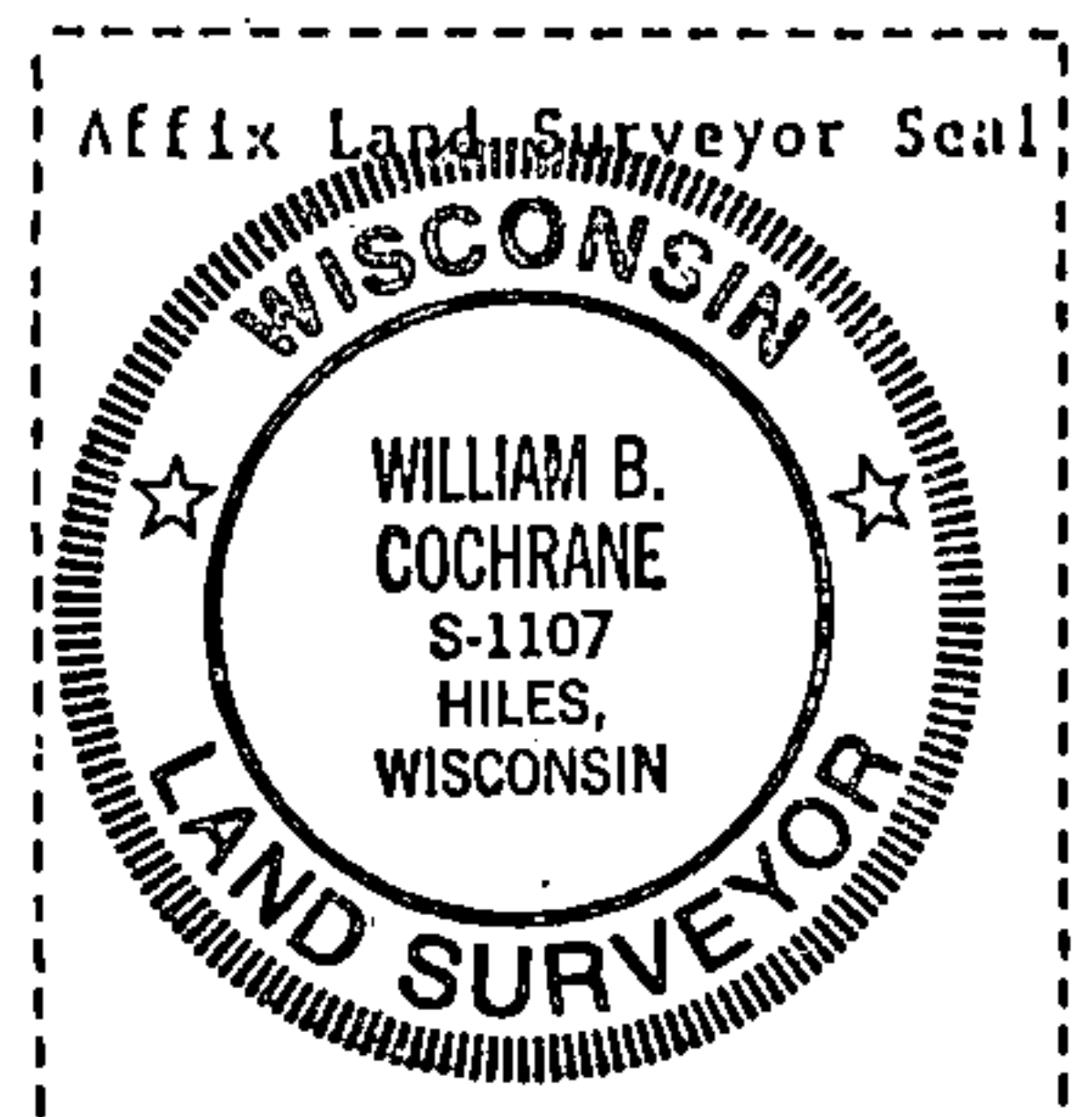
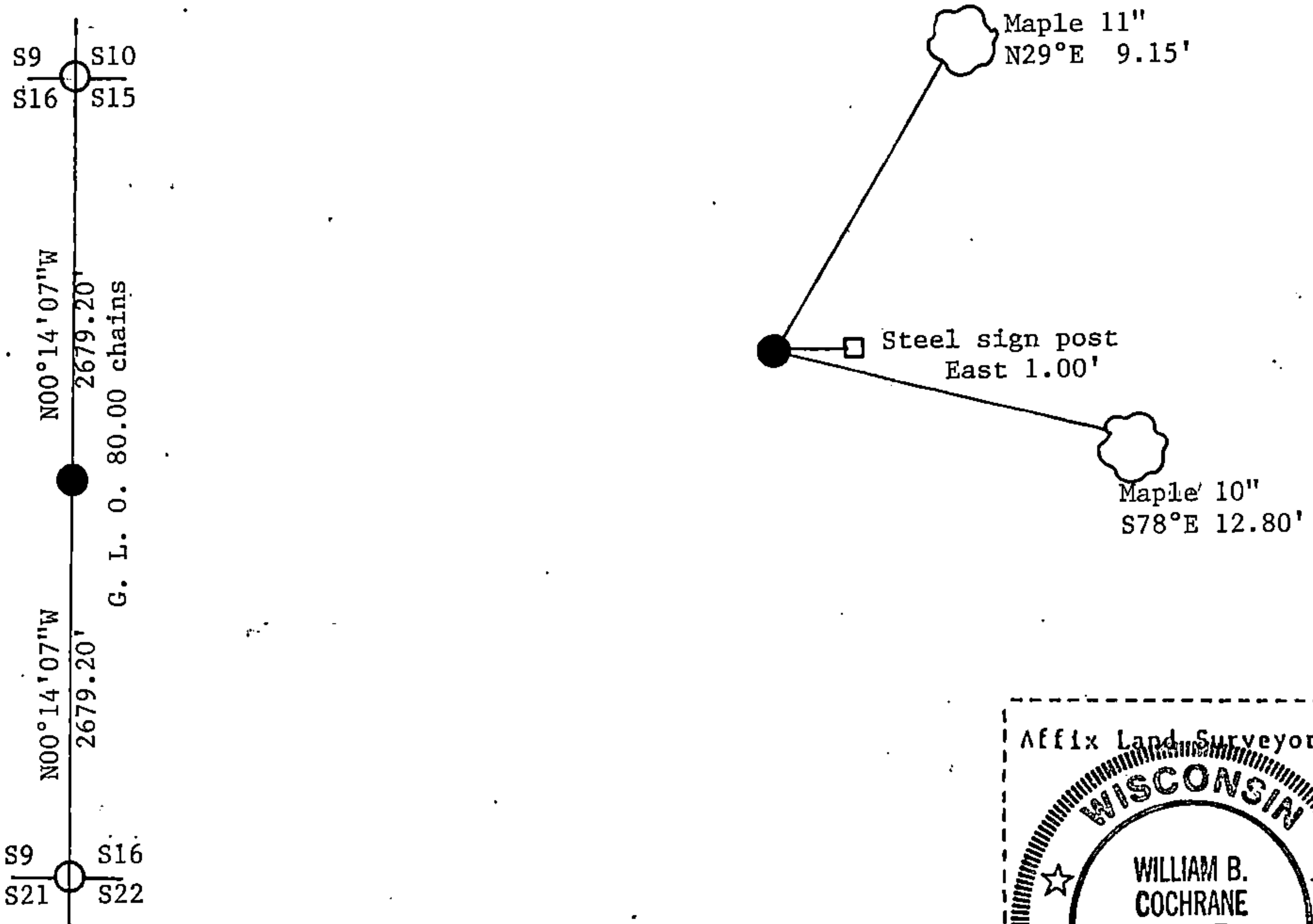
(d) Describe any material discrepancy between the location of the corner as restored or reestablished and the location of that corner as previously restored or reestablished by distance and direction. Show the discrepancy on the plan view drawing under (d), above. Show the distances between the corner as previously restored or reestablished and (1) the corner as restored or reestablished, and (2) to at least 2 of the witness monuments shown on the drawing in (d), above.

See drawing below.

(f) Was the corner restored through acceptance of (1) an obliterated evidence location, or, (2) a found perpetuated location?

Re-established through lost corner proportionate methods.

(g/h) Was the corner reestablished through lost corner proportionate methods? If so, show the method, including the directions and distances to other public land survey corners used as evidence or used for proportioning in determining the corner location?



(i) I, William B. Cochrane  
 (type or print name) certify that the corner location shown on this record was determined by me or under my direction and control and that this U.S. Public Land Survey Monument Record is correct and complete to the best of my knowledge and belief.

William B. Cochrane 12/7/94  
 Signature Date

Survey requested by: \_\_\_\_\_  
 District Ranger Date