

U.S. PUBLIC LAND SURVEY MONUMENT RECORD

Index No. L-1

State of Wisconsin }  
County of Forest } ss.

I, William B. Cochrane, do hereby certify that on the 10th day of September, 1985, I found evidence of the Witness to the West Quarter corner of Section 18 Township 39 North, Range 14 East, Fourth Principal Meridian, as described hereon; and that from this evidence I established a new monument and accessories as described hereon to perpetuate the original location of this corner.

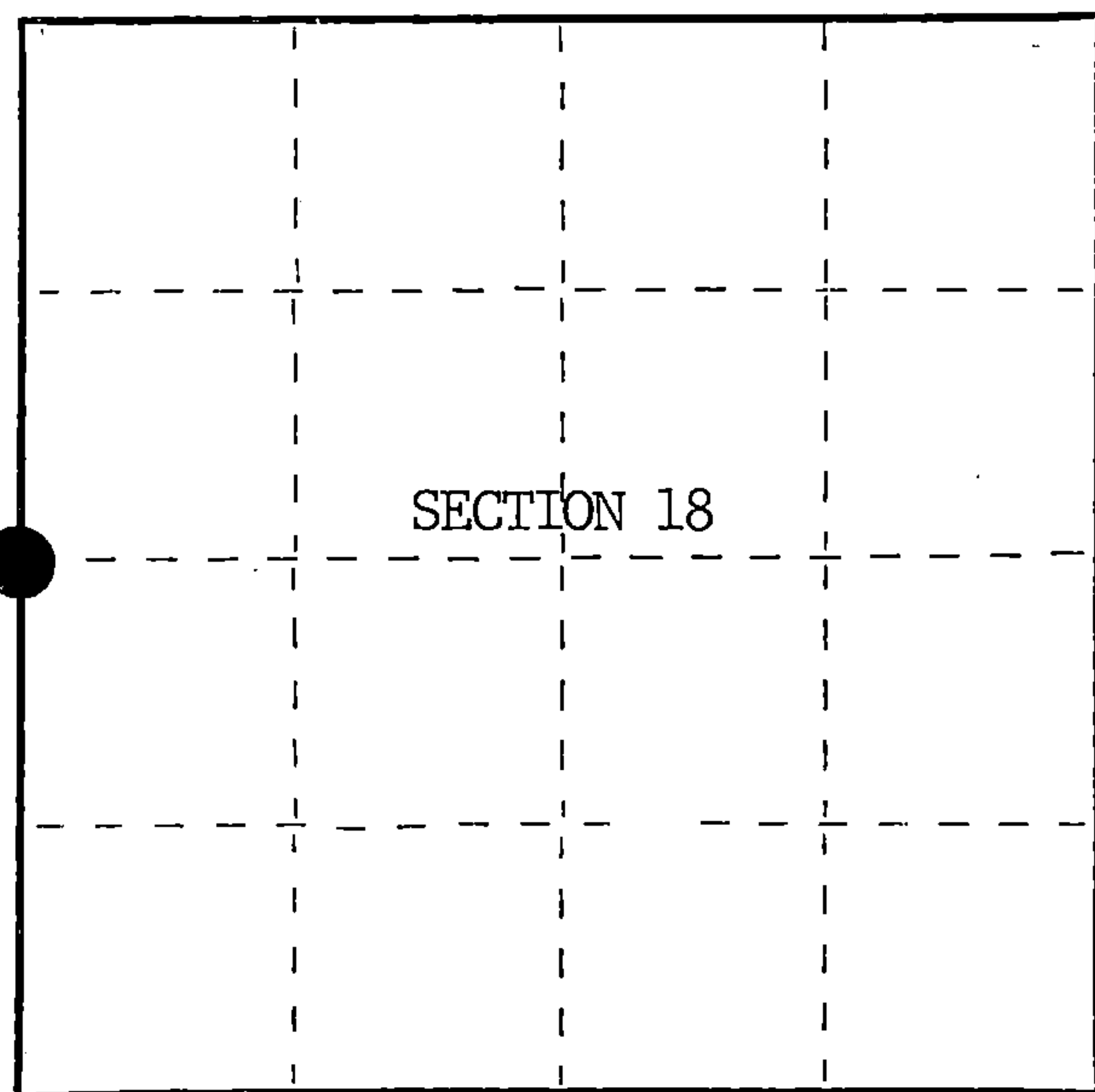
Resident witnesses:

Tony Tillman

State Plane Co-ordinates

N- 255,239.0410

E-2,305,889.8710



○ = Corner monument restored.

History of original corner establishment:

Original Government Survey in 1858 by Artemas Curtis. North between Sections 13 and 18, 40.00 chs., set Quarter Section Post to Sections 13 and 18, from which the following bear; Spruce, 6", N 4°30E, 138 lks., Cedar, 12", N15°W, 148 lks. In 1928, Melindy, a Local Surveyor, sub-divided Section 18. The Quarter Corner position could not be re-established because of a beaver pond. Set a 4"x4" Cedar Post for a Witness Corner, 144.50 feet North, from which a Pine Stump, 30", bears N12°E, 72.20 feet.

Description of corner evidence found:

Found 4"x4" Wood Post.

I accept the Wood Post as the best available evidence for restoring the corner position.

No original corner evidence was recovered.

Description of monument and accessories I established to perpetuate the original location of this corner.

In place of Wood Post, set a 2½ inch diameter aluminum pipe monument, 3 feet long, 2½ feet in the ground, with an aluminum cap stamped; T39N, R13E, R14E, 1/4, S13, S18, W. C., 1985, S-1107. From which the following new blazed and scribed bearing trees bear;

Spruce	9"	N 8°E	32.13 feet
Tamarack	10"	N60°W	82.35 feet
Steel Sign Post		NE	3.00 feet

Dated at Hiles, Wis., this 18th day of March, 1986

Signature *William B. Cochrane* Title Land Surveyor Registration No. S-1107  
(County Surveyor, Registered Land Surveyor, or other duly authorized official)

Office of Register of Deeds, County of Forest, I hereby certify that the within instrument was filed in this office for record on the 11th day of March, 1987 at 3:30 o'clock P. M.

*Paul Aschenbrenner*  
(Register of Deeds)

By Deputy

43913132990

FORM NO. 985-A

H.C. Miller Company

Stock No. 26273

DOCUMENT NUMBER 132354

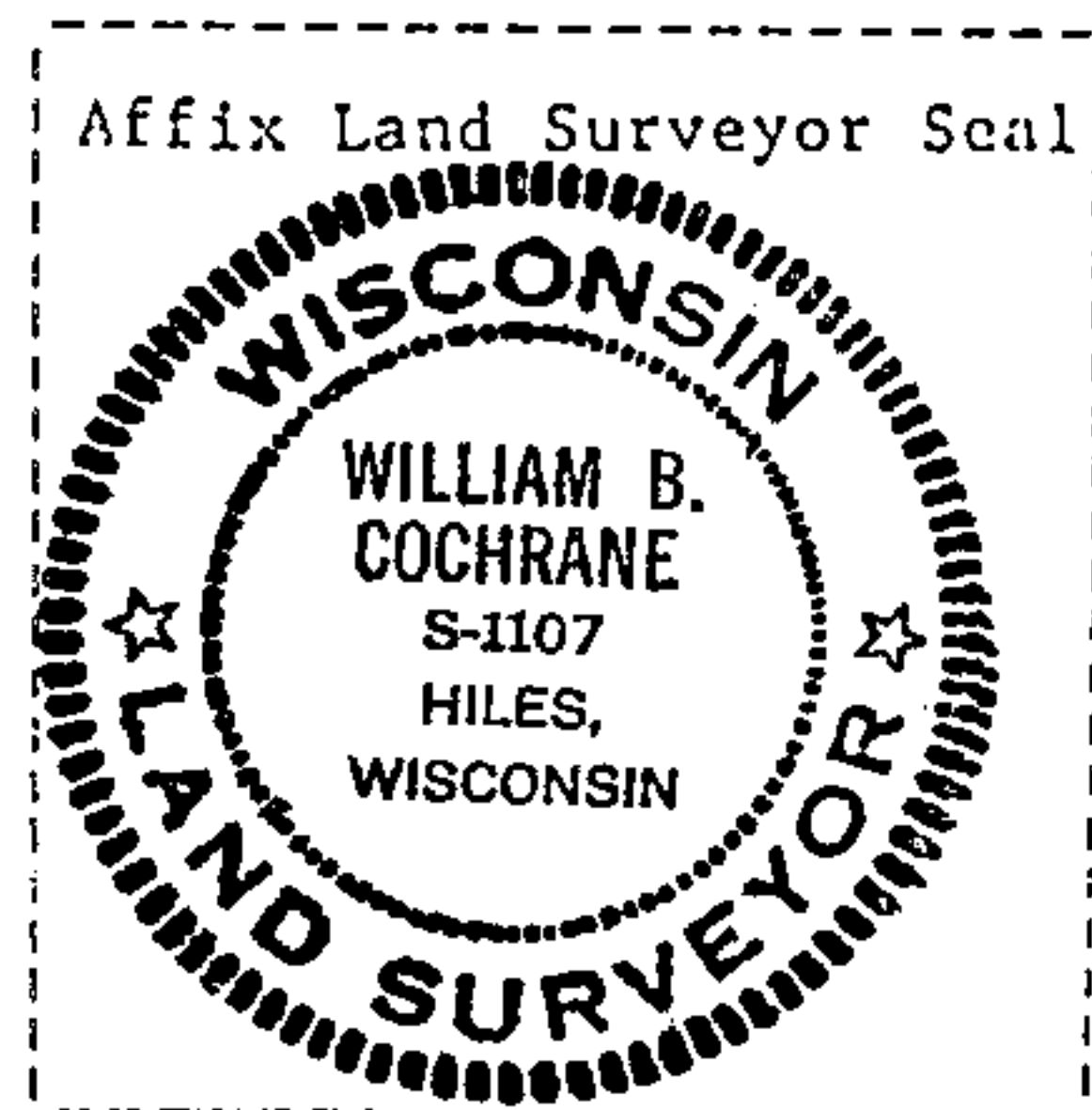
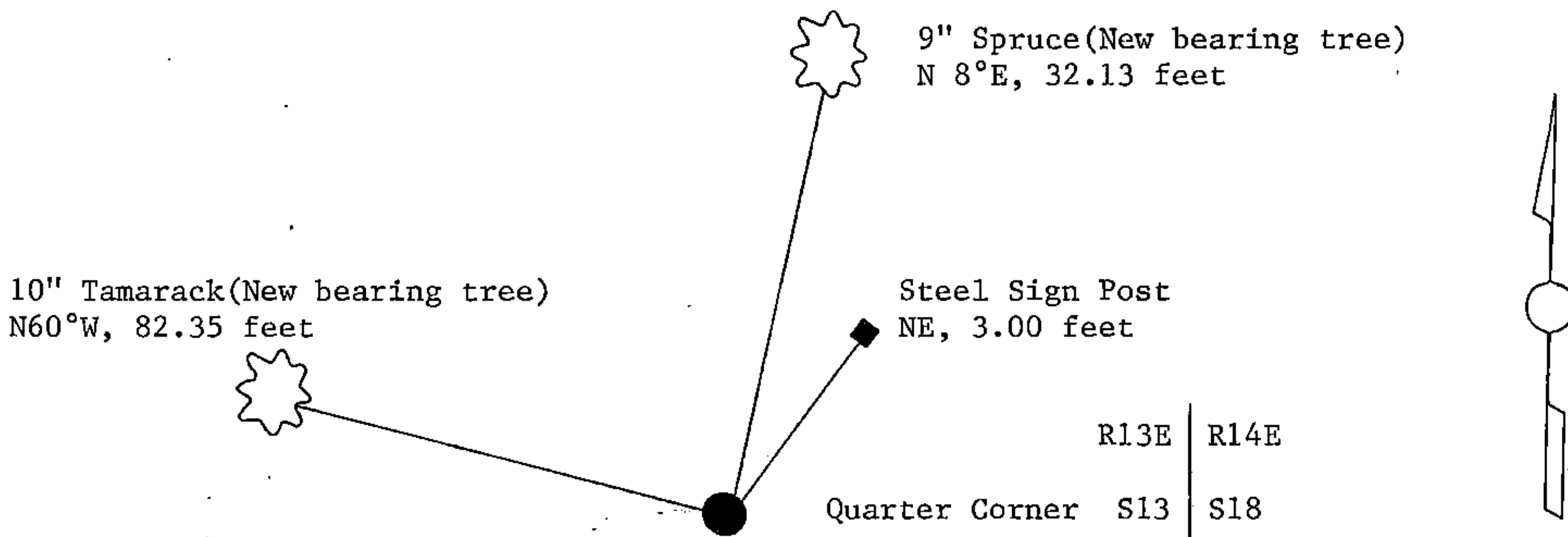
(e) Describe any material discrepancy between the location of the corner as restored or reestablished and the location of that corner as previously restored or reestablished by distance and direction. Show the discrepancy on the plan view drawing under (d), above. Show the distances between the corner as previously restored or reestablished and (1) the corner as restored or reestablished, and (2) to at least 2 of the witness monuments shown on the drawing in (d), above.

See drawing below.

(f) Was the corner restored through acceptance of (1) an obliterated evidence location, or, (2) a found perpetuated location?

Restored from accepted evidence.

(g&h) Was the corner reestablished through lost corner proportionate methods? If so, show the method, including the directions and distances to other public land survey corners used as evidence or used for proportioning in determining the corner location?



(i) I, William B. Cochrane  
(type or print name) certify that the corner location shown on this record was determined by me or under my direction and control and that this U.S. Public Land Survey Monument Record is correct and complete to the best of my knowledge and belief.

William B. Cochrane      October 7, 1986  
Signature      Date

Survey requested by: [Signature]  
District Ranger      Date

U.S. PUBLIC LAND SURVEY MONUMENT RECORD

Index No. L-25

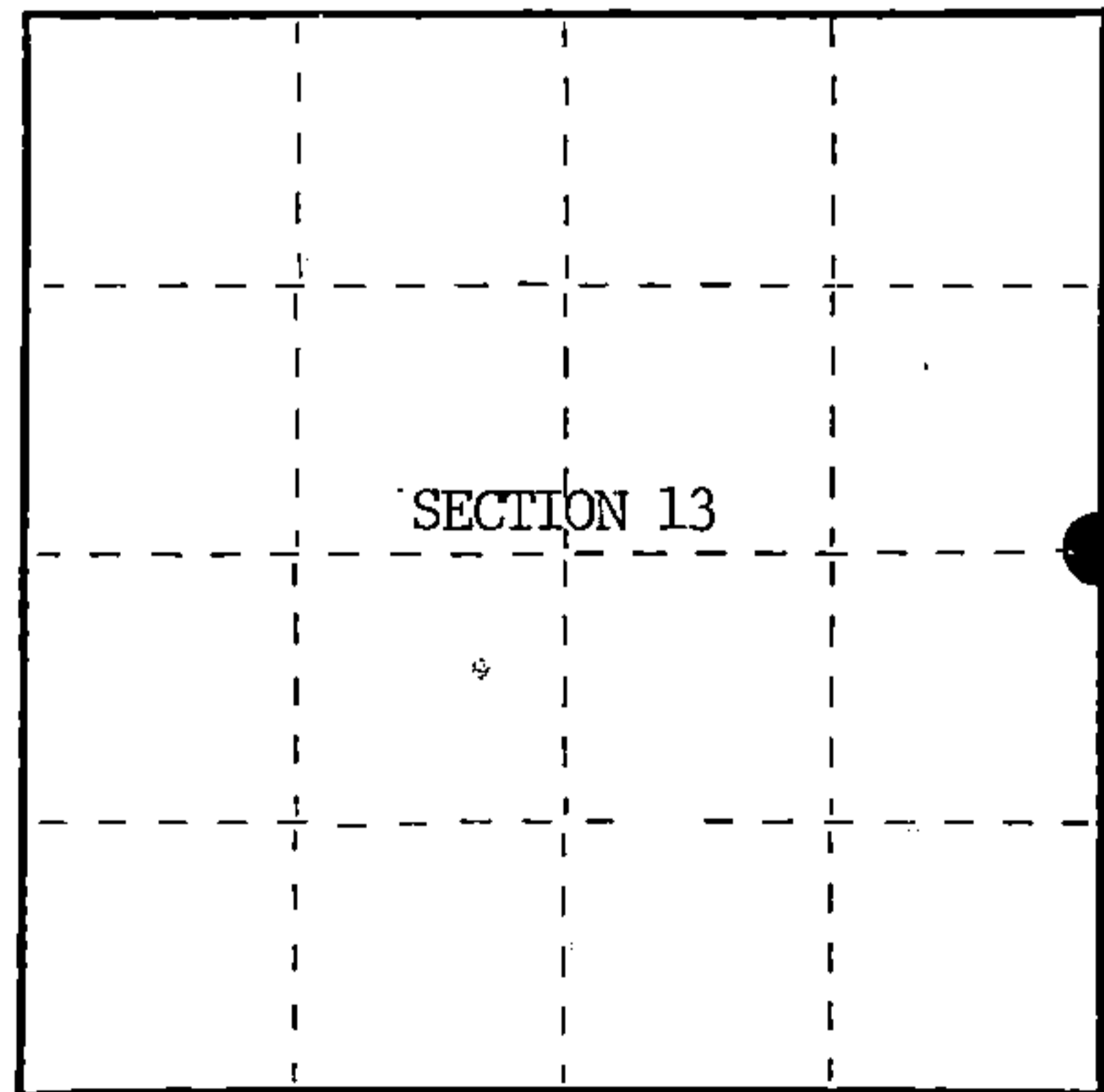
State of Wisconsin }  
County of Forest } ss.

I, William B. Cochrane, do hereby certify that on the 10th day of September, 1985, I found evidence of the Witness to the East Quarter corner of Section 13 Township 39 North, Range 13 East, Fourth Principal Meridian, as described hereon; and that from this evidence I established a new monument and accessories as described hereon to perpetuate the original location of this corner.

Resident witnesses:

Tony Tillman

State Plane Co-ordinates  
N- 255,239.0410  
E-2,305,889.8710



○ = Corner monument restored.

History of original corner establishment:

Original Government Survey in 1858 by Artemas Curtis. North between Sections 13 and 18, 40.00 chs., set Quarter Section Post to Sections 13 and 18, from which the following bear; Spruce, 6", N 4°30'E, 138 lks., Cedar, 12", N15°W, 148 lks. In 1928, Melindy, a Local Surveyor, sub-divided Section 18. The corner position could not be re-established because of a beaver pond. Set a 4"x4" Cedar Post for a Witness Corner, 144.50 feet North, of the Quarter Corner position. From which a Pine Stump, 30", bears N12°E, 72.20 feet.

Description of corner evidence found:

Found 4"x4" Wood Post.

I accept the Wood Post as the best available evidence for restoring the corner position.

No original corner evidence was recovered.

Description of monument and accessories I established to perpetuate the original location of this corner.

In place of Wood Post, set a 2½ inch diameter aluminum pipe monument, 3 feet long, 2½ feet in the ground, with an aluminum cap stamped; T39N, R13E, R14E, 1/4, S13, S18, W.C., 1985, S-1107. From which the following new blazed and scribed bearing trees bear;

Spruce	9"	N 8°E	32.13 feet
Tamarack	10"	N60°W	82.35 feet
- Steel Sign Post		NE	3.00 feet

Dated at Hiles, Wis., this 18th day of March, 1986

Signature *William B. Cochrane* Title Land Surveyor Registration No. S-1107  
(County Surveyor, Registered Land Surveyor, or other duly authorized official)

Office of Register of Deeds, County of Forest, I hereby certify that the within instrument was filed in this office for record on the 11th day of March, 1987 at 3:30'clock P. M.

*Paul Aschenbrenner*  
(Register of Deeds)

By \_\_\_\_\_ Deputy

FORM NO. 985-A

H C Miller Company

Stock No. 26273

DOCUMENT NUMBER 132303

43913132000

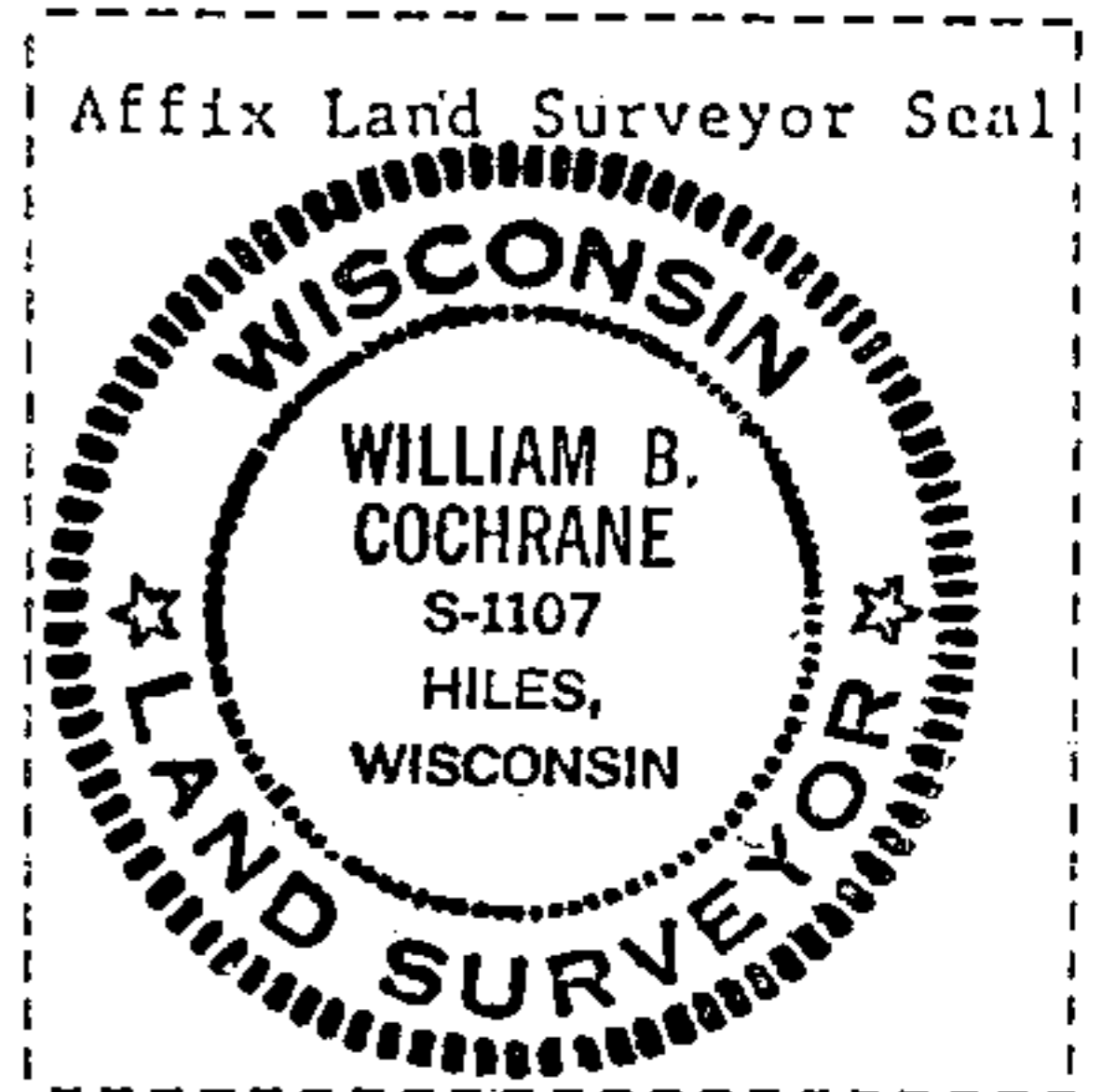
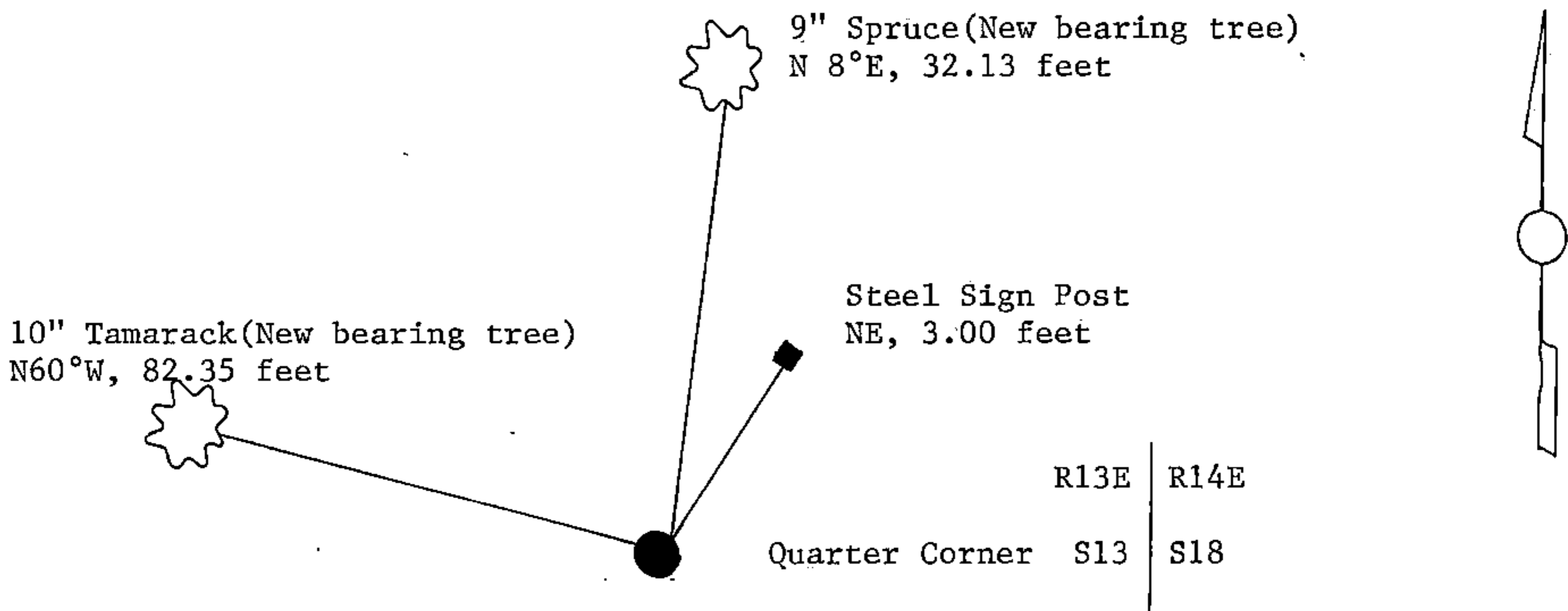
(e) Describe any material discrepancy between the location of the corner as restored or reestablished and the location of that corner as previously restored or reestablished by distance and direction. Show the discrepancy on the plan view drawing under (d), above. Show the distances between the corner as previously restored or reestablished and (1) the corner as restored or reestablished, and (2) to at least 2 of the witness monuments shown on the drawing in (d), above.

See drawing below.

(f) Was the corner restored through acceptance of (1) an obliterated evidence location, or, (2) a found perpetuated location?

Restored from accepted evidence.

(g&h) Was the corner reestablished through lost corner proportionate methods? If so, show the method, including the directions and distances to other public land survey corners used as evidence or used for proportioning in determining the corner location?



(i) I, William B. Cochrane  
(type or print name) certify that the corner location shown on this record was determined by me or under my direction and control and that this U.S. Public Land Survey Monument Record is correct and complete to the best of my knowledge and belief.

William B. Cochrane Signature      October 7, 1986 Date

Survey requested by: [Signature] District Ranger      3-9-87 Date