

U.S. PUBLIC LAND SURVEY MONUMENT RECORD

Index No. N-1

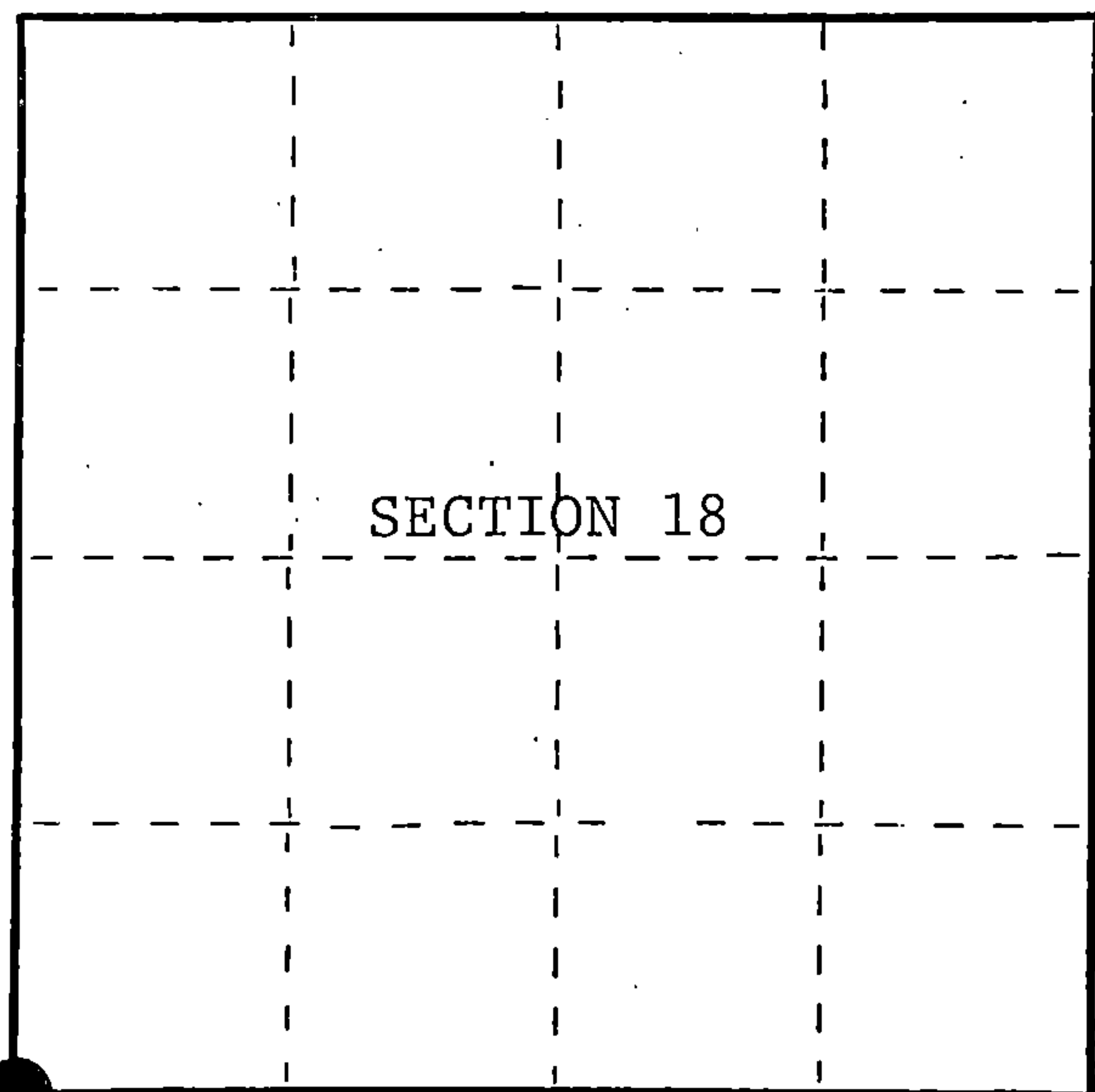
State of Wisconsin }
County of Forest } ss.

I, William B. Cochran, do hereby certify that on the 26th day of August, 1985, I found evidence of the Southwest Section corner of Section 18 Township 39, North, Range 14 East, Fourth Principal Meridian, as described hereon; and that from this evidence I established a new monument and accessories as described hereon to perpetuate the original location of this corner.

Resident witnesses:

Tony Tillman

State Plane Co-ordinates
N- 252,435.4521
E-2,305,977.5640



○ = Corner monument restored.

History of original corner establishment:

Original Government Survey in 1858 by Artemas Curtis.

In 1928, Melindy, a Local Surveyor sub-divided Section 18. At the West 1/4, he set a Witness Post 144 1/2 feet North. He measured a distance of 2660.46 feet from the actual West 1/4 position to the Southwest Section Corner.

Description of corner evidence found:

Found Melindys Witness Post at the West 1/4 of Section 18.

Found blazed line from the West 1/4 to the Southwest Section Corner.

Noncorner evidence was recovered at the Southwest Section Corner.

I accept the record distance of 2660.46 feet and the blazed North and South Line as the best available evidence for restoring the corner position.

Description of monument and accessories I established to perpetuate the original location of this corner.

At a point 2660.46 feet south of the West 1/4, and down a blazed North-South line, set a 2 1/2 inch diameter aluminum pipe monument, 5 feet long, 4 1/2 feet in the ground, with an aluminum cap stamped; T39N, R13E, R14E, S13, S18, S19, S24, 1986, S-1107. From which the following new blazed and scribed bearing trees bear;

Tamarack	10"	S78°E	61.18 feet
Tamarack	16"	S33°E	68.70 feet
Steel Sign Post		North	0.50 feet

Dated at Hiles, Wis., this 11th day of February, 1987

Signature: William B. Cochran, Title: Land Surveyor, Registration No. S-1107
(County Surveyor, Registered Land Surveyor, or other duly authorized official)

Office of Register of Deeds, County of Forest, I hereby certify that the within instrument was filed in this office for record on the 11th day of March, 1987 at 3:30 o'clock P.M.

Paul Aschubrenner
(Register of Deeds)

By Deputy

FORM NO. 985-A

H.C. Miller Company
SURVEYING INSTRUMENTS

Stock No. 26273

DOCUMENT NUMBER 132360

43913130000

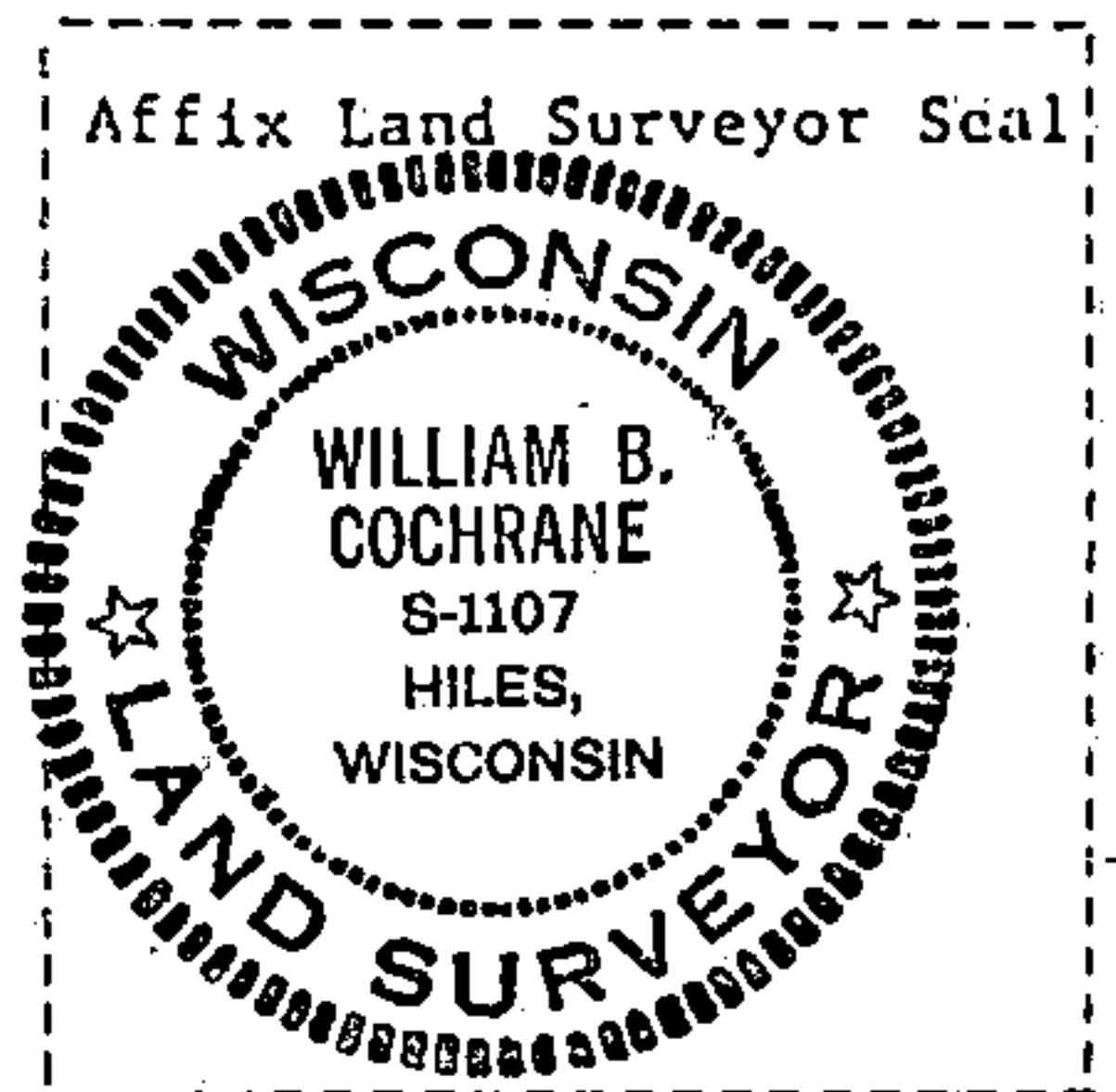
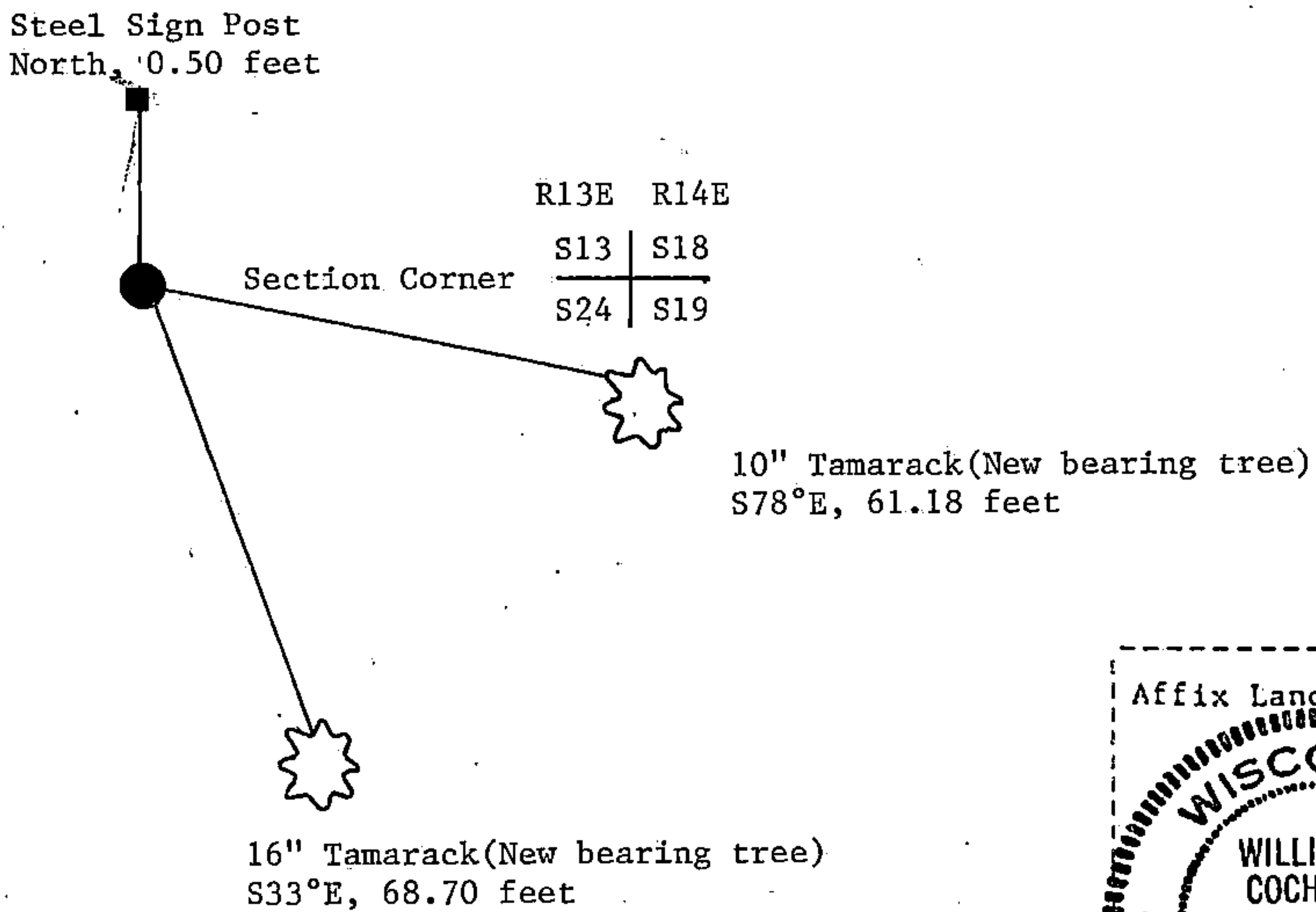
(e) Describe any material discrepancy between the location of the corner as restored or reestablished and the location of that corner as previously restored or reestablished by distance and direction. Show the discrepancy on the plan view drawing under (d), above. Show the distances between the corner as previously restored or reestablished and (1) the corner as restored or reestablished, and (2) to at least 2 of the witness monuments shown on the drawing in (d), above.

See drawing below.

(f) Was the corner restored through acceptance of (1) an obliterated evidence location, or, (2) a found perpetuated location?

Restored from accepted evidence.

(g&h) Was the corner reestablished through lost corner proportionate methods? If so, show the method, including the directions and distances to other public land survey corners used as evidence or used for proportioning in determining the corner location?



(i) I, William B. Cochrane
(type or print name) certify that the corner location shown on this record was determined by me or under my direction and control and that this U.S. Public Land Survey Monument Record is correct and complete to the best of my knowledge and belief.

William B. Cochrane February 11, 1987
Signature Date

Survey requested by: [Signature] 3-9-87
District Ranger Date

U.S. PUBLIC LAND SURVEY MONUMENT RECORD

Index No. N-25

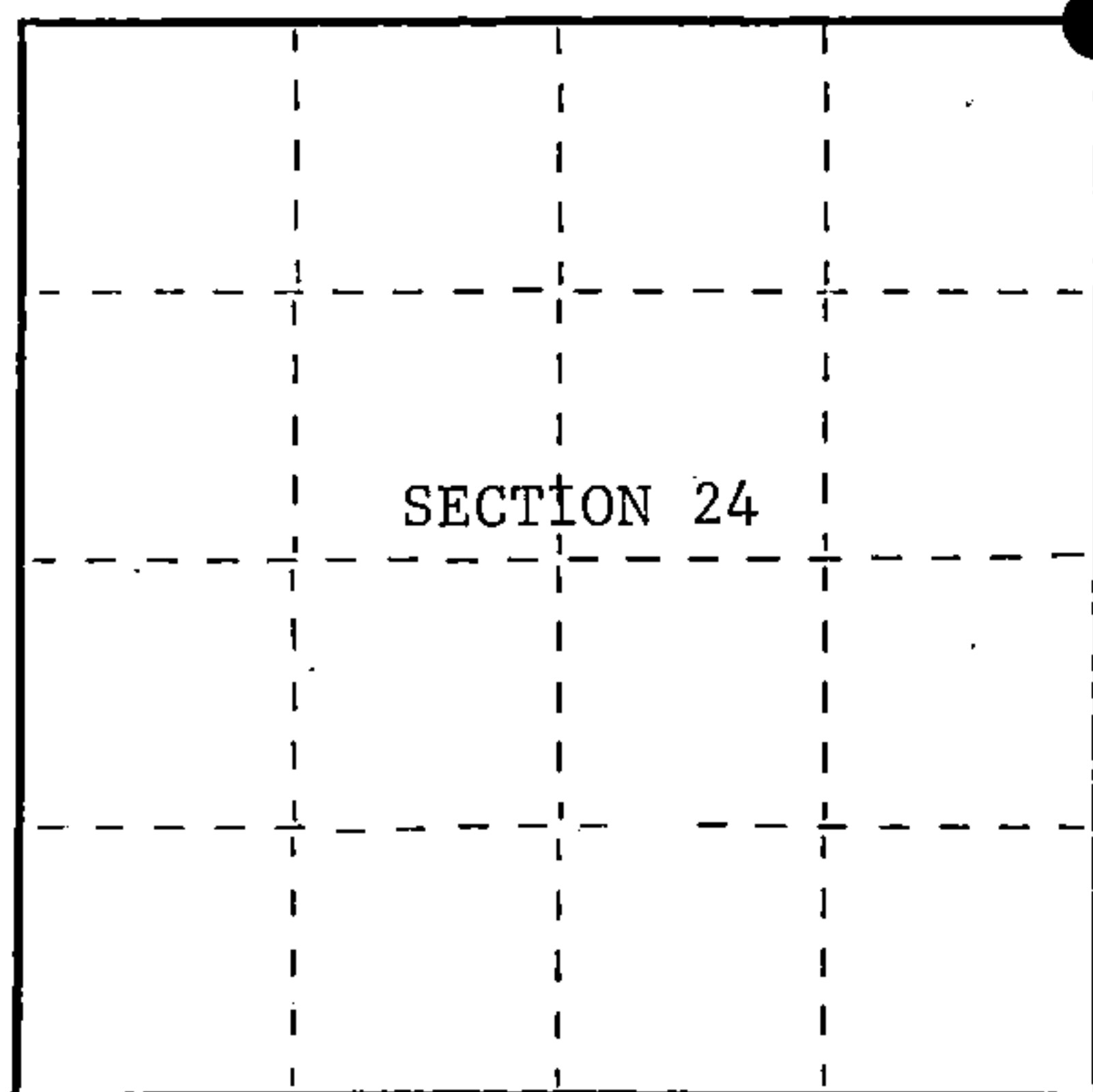
State of Wisconsin }
County of Forest } ss.

I, William B. Cochran, do hereby certify that on the 26th day of August, 1985, I found evidence of the Northeast Section corner of Section 24 Township 39, North, Range 13 East, Fourth Principal Meridian, as described hereon; and that from this evidence I established a new monument and accessories as described hereon to perpetuate the original location of this corner.

Resident witnesses:

Tony Tillman

State Plane Co-ordinates
N- 252,435.4521
E-2,305,977.5640



○ = Corner monument restored.

History of original corner establishment:

Original Government Survey in 1858 by Artemas Curtis.

In 1928, Melindy, a Local Surveyor, sub-divided Section 18 of T39N R14E. At the West 1/4 of Section 18, he set A Witness Post 144½ feet North. He measured a distance of 2660.46 feet from the West 1/4 to the Southwest Section Corner.

Description of corner evidence found:

Found Melindys Witness Post at the West 1/4 of Section 18.

Found blazed line from the West 1/4 to the Southwest Section Corner.

No evidence was recovered at the Southwest Section Corner.

I accept the record distance of 2660.46 feet and the blazed North-South line as the best available evidence for restoring the corner position.

Description of monument and accessories I established to perpetuate the original location of this corner.

At a point 2660.46 feet South of the West 1/4 of Section 18, and down a North-South blazed line, set a 2½ inch diameter aluminum pipe monument, 5 feet long, 4½ feet in the ground, with an aluminum cap stamped; T39N, R13E, R14E, S13, S18, S19, S24, 1986, S-1107. From which the following new blazed and scribed bearing trees bear;

Tamarack	10"	S78°E	61.18 feet
Tamarack	16"	S33°E	68.70 feet
Steel Sign Post		North	0.50 feet

Dated at Hiles, Wis., this 11th day of February, 1987

Signature *William B. Cochran* Title Land Surveyor Registration No. S-1107
(County Surveyor, Registered Land Surveyor, or other duly authorized official)

Office of Register of Deeds, County of Forest, I hereby certify that the within instrument was filed in this office for record on the 11th day of March, 1987 at 3:30 o'clock P. M.

Paul Aschenbrenner
(Register of Deeds)

By _____ Deputy

FORM NO. 985-A

H.C. Miller Company

Stock No. 26273

DOCUMENT NUMBER 132304

4391313000

(e) Describe any material discrepancy between the location of the corner as restored or reestablished and the location of that corner as previously restored or reestablished by distance and direction. Show the discrepancy on the plan view drawing under (d), above. Show the distances between the corner as previously restored or reestablished and (1) the corner as restored or reestablished, and (2) to at least 2 of the witness monuments shown on the drawing in (d), above.

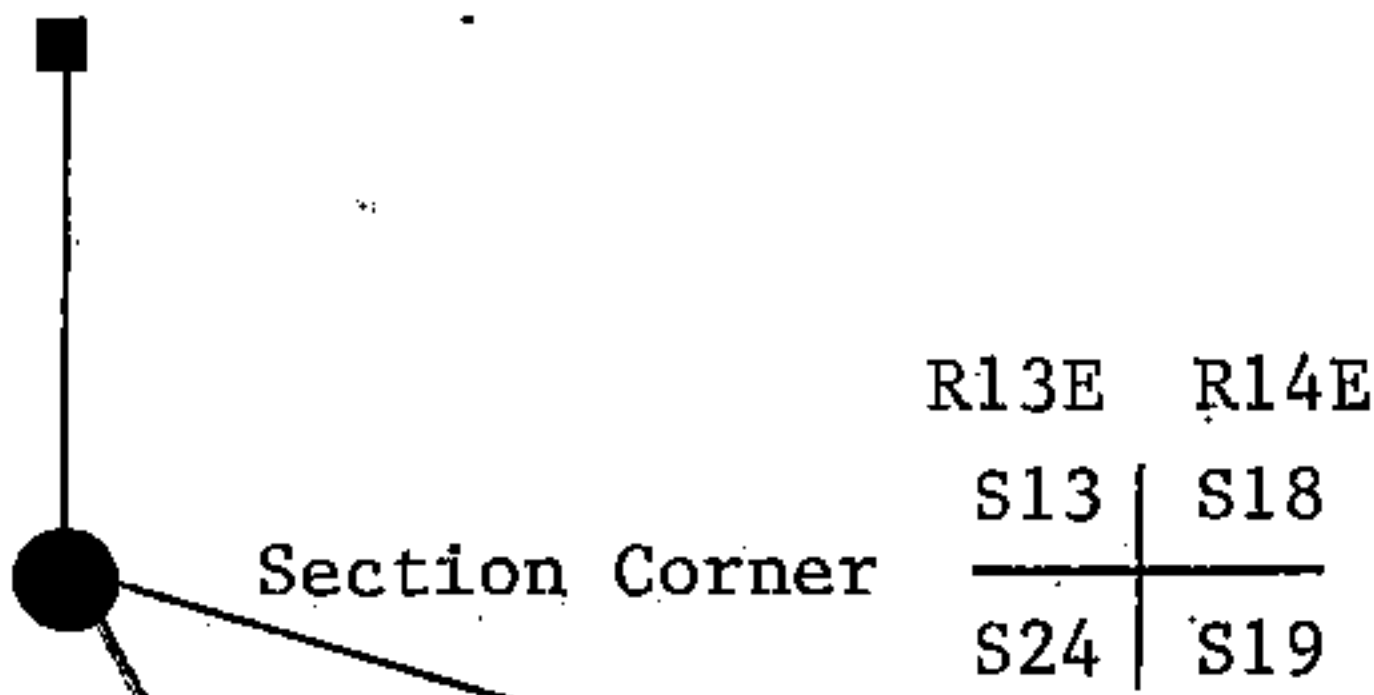
See drawing below.

(f) Was the corner restored through acceptance of (1) an obliterated evidence location, or, (2) a found perpetuated location?

Restored from accepted evidence.

(g&h) Was the corner reestablished through lost corner proportionate methods? If so, show the method, including the directions and distances to other public land survey corners used as evidence or used for proportioning in determining the corner location?

Steel Sign Post
North, 0.50 feet



10" Tamarack (New bearing tree)
S78°E, 61.18 feet

16" Tamarack (New bearing tree)
S33°E, 68.70 feet



(i) I, William B. Cochrane
(type or print name) certify that the corner location shown on this record was determined by me or under my direction and control and that this U.S. Public Land Survey Monument Record is correct and complete to the best of my knowledge and belief.

William B. Cochrane February 11, 1987
Signature Date

Survey requested by: David Green 3-9-87
District Ranger Date