

U.S. PUBLIC LAND SURVEY MONUMENT RECORD

Index No. J-1

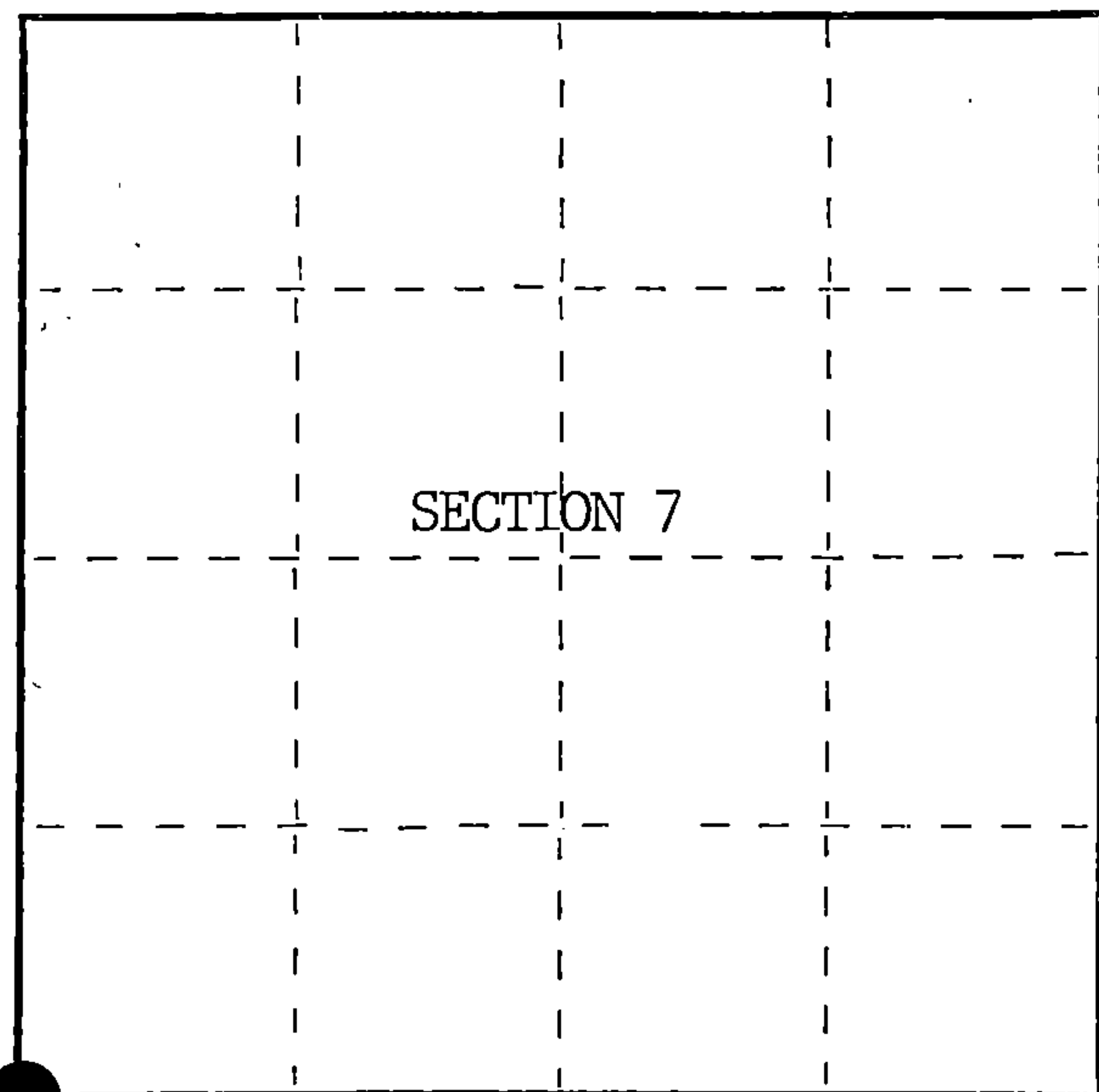
State of Wisconsin }
County of Forest } ss.

I, William B. Cochrane, do hereby certify that on the 29th day of August, 1985 I found evidence of the Southwest Section corner of Section 7 Township 39 North, Range 14 East, Fourth Principal Meridian, as described hereon; and that from this evidence I established a new monument and accessories as described hereon to perpetuate the original location of this corner.

Resident witnesses:

Tony Tillman

State Plane Co-ordinates
N- 257,710.3510
E-2,305,811.9990



○ = Corner monument restored.

History of original corner establishment:

Original Government Survey in 1858 by Alfred Millard.

Corner restored on October 10th, 1975, by Jean Resvick, a Registered Land Surveyor with the U.S. Forest Service.

See Certified Land Corner Restoration Certificate #103593, filed in the Registrar of Deeds Office, in the Forest County Courthouse.

Description of corner evidence found:

Found monument as described and in place, from which the following bear;

Spruce	10"	S88°E	3.40 feet
Steel Sign Post		NE	3.50 feet

Description of monument and accessories I established to perpetuate the original location of this corner.

Blazed and scribed the following new bearing trees;

Spruce	16"	N29°E	51.62 feet
Aspen	12"	South	66.74 feet
Aspen	14"	N32°W	54.18 feet

Dated at Hiles, Wis., this 26th day of February, 1986

Signature *William B. Cochrane* Title Land Surveyor Registration No. S-1107
(County Surveyor, Registered Land Surveyor, or other duly authorized official)

Office of Register of Deeds, County of Forest, I hereby certify that the within instrument was filed in this office for record on the 11th day of March, 1987 at 3:30 o'clock P. M.

Paul Aschenbrenner
(Register of Deeds)

By _____ Deputy

FORM NO. 985-A

H.C. Miller Company
MILWAUKEE, WISCONSIN

Stock No. 26273

DOCUMENT NUMBER 132341

439131209607

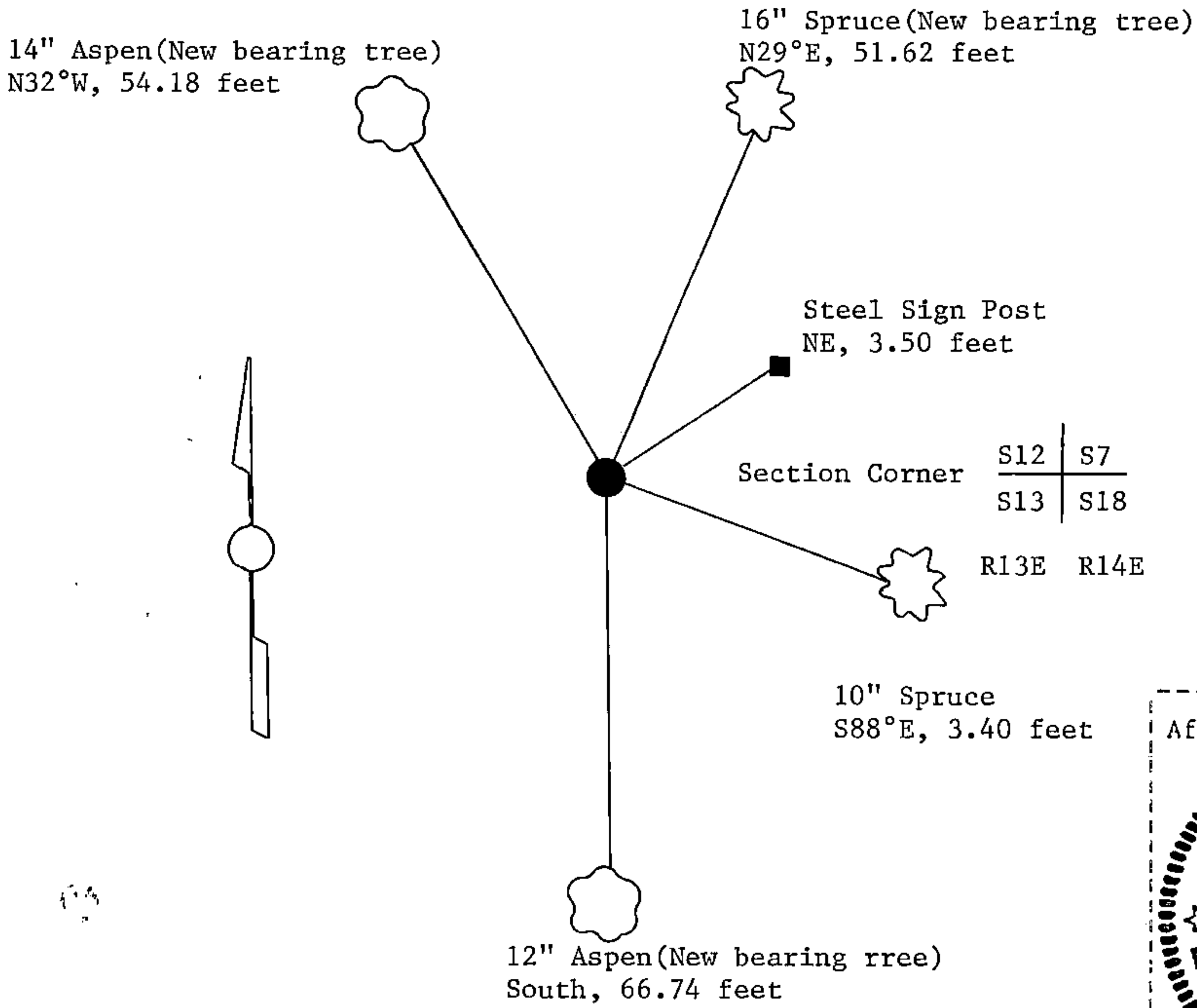
(e) Describe any material discrepancy between the location of the corner as restored or reestablished and the location of that corner as previously restored or reestablished by distance and direction. Show the discrepancy on the plan view drawing under (d), above. Show the distances between the corner as previously restored or reestablished and (1) the corner as restored or reestablished, and (2) to at least 2 of the witness monuments shown on the drawing in (d), above.

See drawing below.

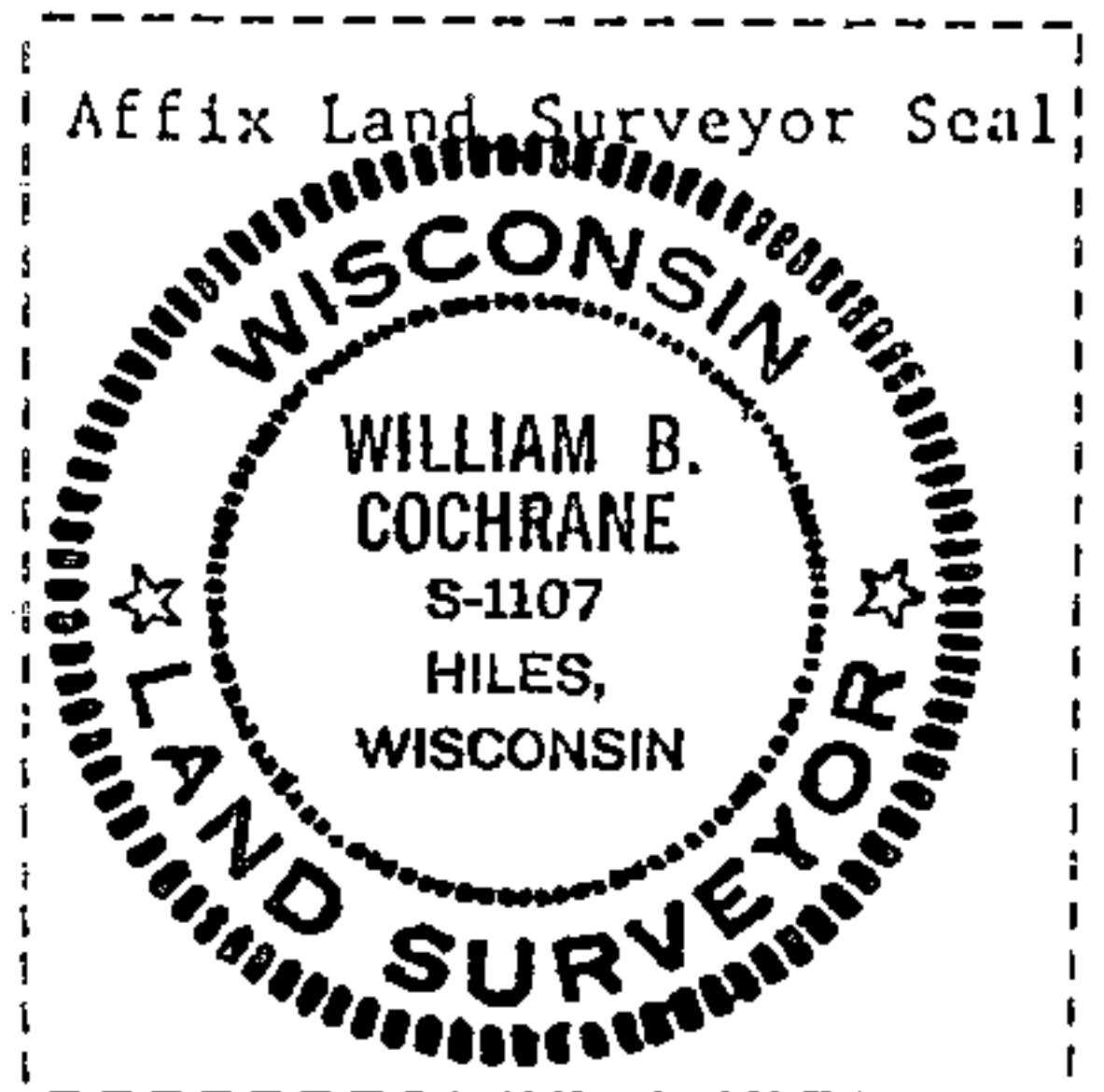
(f) Was the corner restored through acceptance of (1) an obliterated evidence location, or, (2) a found perpetuated location?

Restored through acceptance of a found perpetuated location.

(g&h) Was the corner reestablished through lost corner proportionate methods? If so, show the method, including the directions and distances to other public land survey corners used as evidence or used for proportioning in determining the corner location?



(i) I, William B. Cochrane
 (type or print name) certify that the corner location shown on this record was determined by me or under my direction and control and that this U.S. Public Land Survey Monument Record is correct and complete to the best of my knowledge and belief.



William B. Cochrane October 7, 1986
 Signature Date

Survey requested by: Dwight 3-9-87
 District Ranger Date

U.S. PUBLIC LAND SURVEY MONUMENT RECORD

Index No. J-25

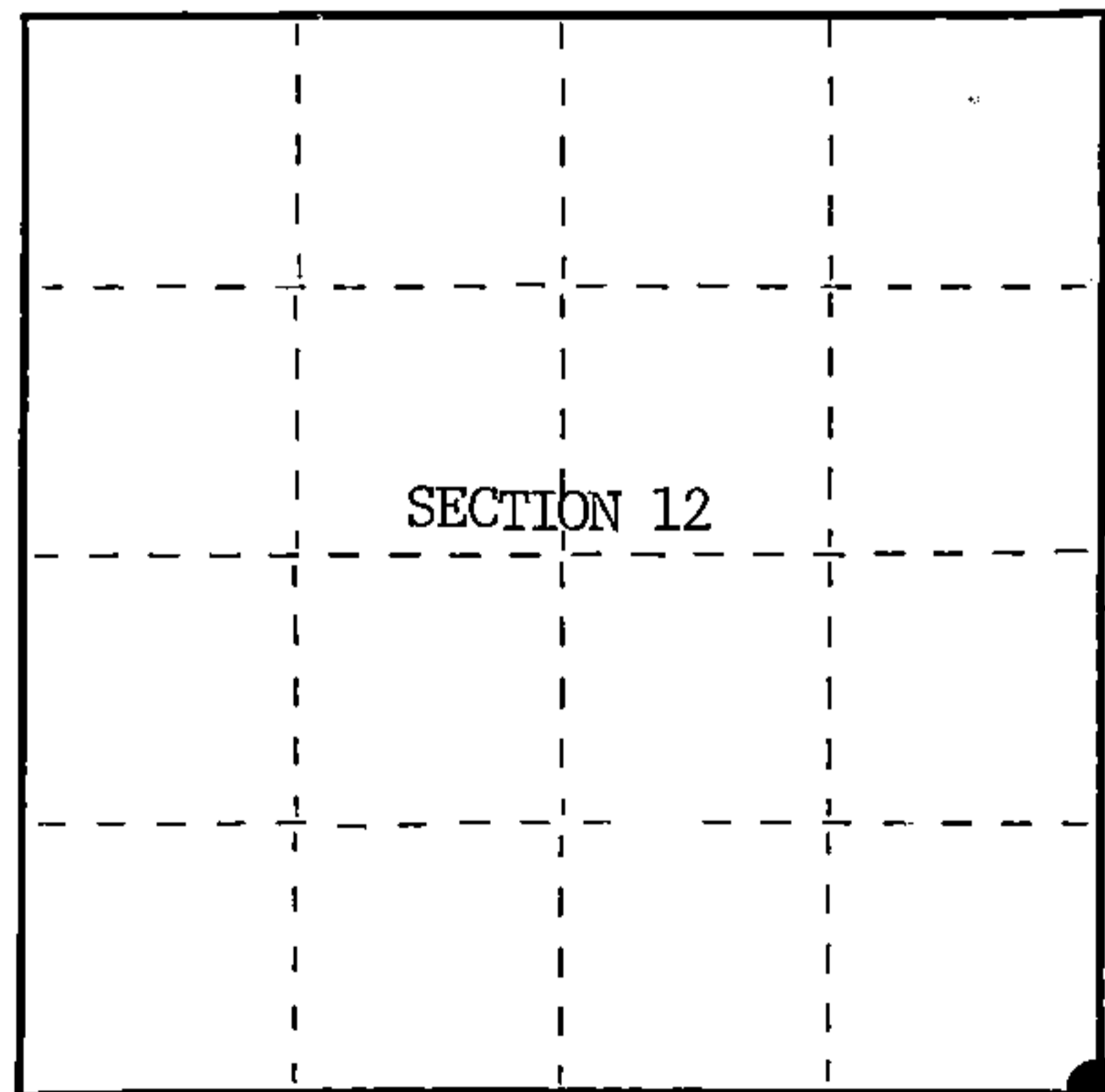
State of Wisconsin }
County of Forest } ss.

I, William B. Cochrane, do hereby certify that on the 29th day of August, 1985, I found evidence of the Southeast Section corner of Section 12 Township 39 North, Range 13 East, Fourth Principal Meridian, as described hereon; and that from this evidence I established a new monument and accessories as described hereon to perpetuate the original location of this corner.

Resident witnesses:

Tony Tillman

State Plane Co-ordinates
N- 257,710.3510
E-2,305,811.9990



○ = Corner monument restored.

History of original corner establishment:

Original Government Survey in 1858 by Alfred Millard.

Corner restored on October 10th, 1975, by Jean Resvick, a Registered Land Surveyor with the U.S. Forest Service.

See Certified Land Corner Restoration Certificate # 103593, filed in the Registrar of Deeds Office, in the Forest County Courthouse.

Description of corner evidence found:

Found monument as described and in place, from which the following bear;

Spruce	10"	S88°E	3.40 feet
Steel Sign Post		NE	3.50 feet

Description of monument and accessories I established to perpetuate the original location of this corner.

Blazed and scribed the following new bearing trees;

Spruce	16"	N29°E	51.62 feet
Aspen	12"	South	66.74 feet
Aspen	14"	N32°W	54.18 feet

Dated at Hiles, Wis., this 26th day of February, 1986.

Signature: William B. Cochrane Title: Land Surveyor Registration No: S-1107
(County Surveyor, Registered Land Surveyor, or other duly authorized official)

Office of Register of Deeds, County of Forest, I hereby certify that the within instrument was filed in this office for record on the 11th day of March, 1987 at 3:30 o'clock P. M.

Paul Aschenbrenner
(Register of Deeds)

By _____ Deputy

FORM NO. 985-A

H.C. Miller Company

Stock No. 26273

DOCUMENT NUMBER 132302

4391312 0000

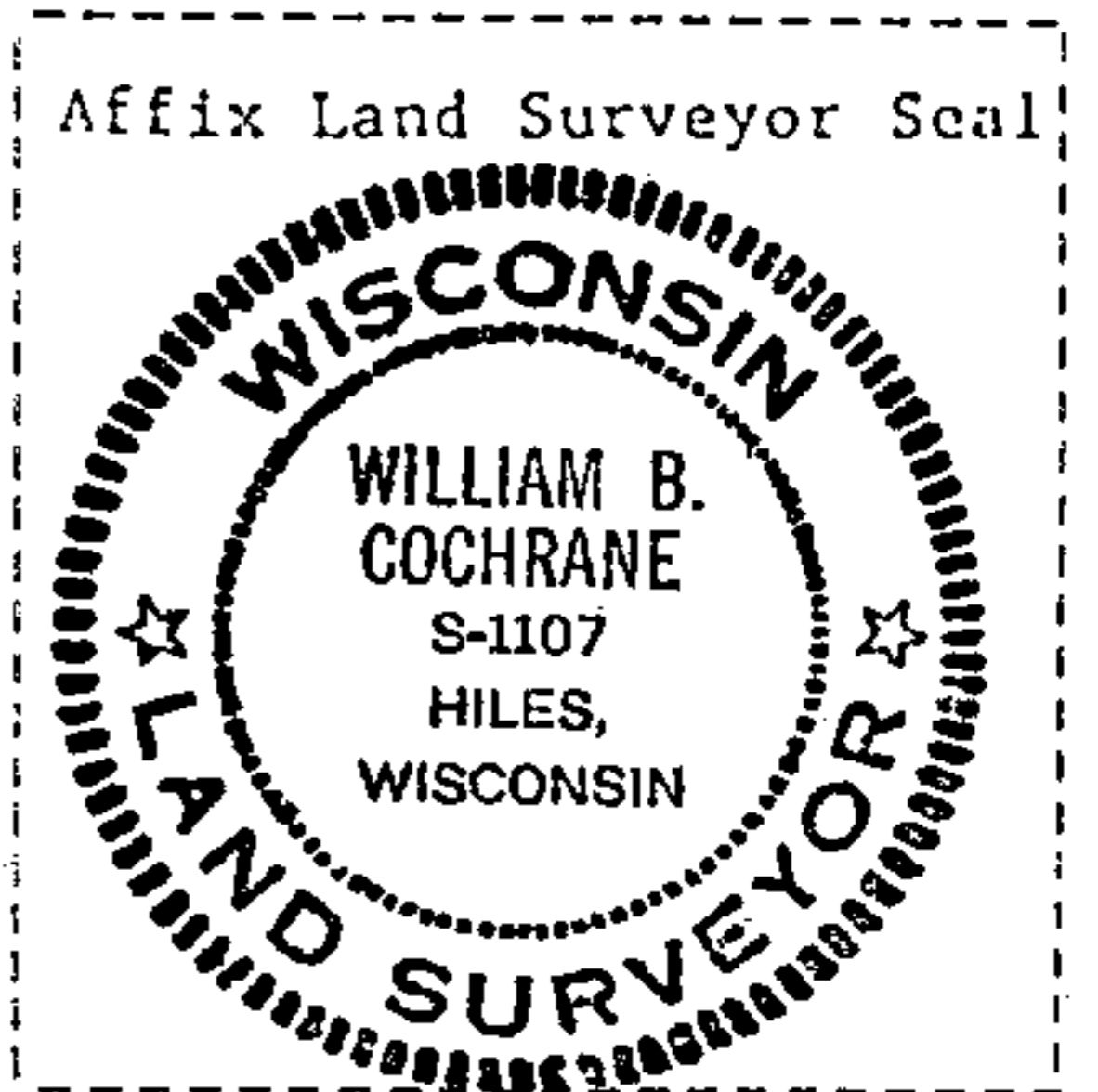
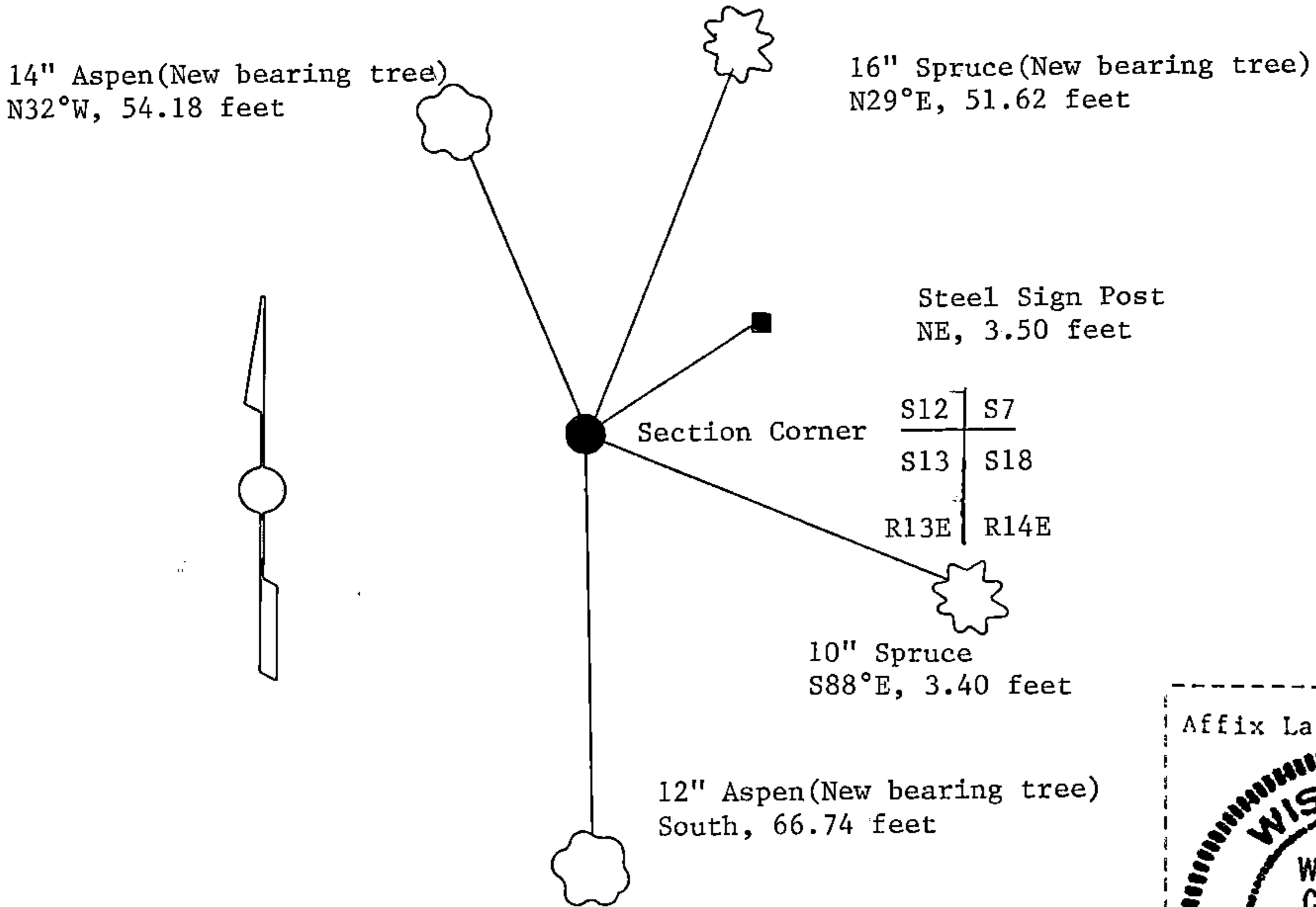
(e) Describe any material discrepancy between the location of the corner as restored or reestablished and the location of that corner as previously restored or reestablished by distance and direction. Show the discrepancy on the plan view drawing under (d), above. Show the distances between the corner as previously restored or reestablished and (1) the corner as restored or reestablished, and (2) to at least 2 of the witness monuments shown on the drawing in (d), above.

See drawing below.

(f) Was the corner restored through acceptance of (1) an obliterated evidence location, or, (2) a found perpetuated location?

Restored through acceptance of a found perpetuated location.

(g&h) Was the corner reestablished through lost corner proportionate methods? If so, show the method, including the directions and distances to other public land survey corners used as evidence or used for proportioning in determining the corner location?



(i) I, William B. Cochrane
(type or print name) certify that the corner location shown on this record was determined by me or under my direction and control and that this U.S. Public Land Survey Monument Record is correct and complete to the best of my knowledge and belief.

William B. Cochrane October 7, 1986
Signature Date

Survey requested by: [Signature] 3-9-87
District Ranger Date

CERTIFIED LAND CORNER RESTORATION

State of Wisconsin }
County of Forest } ss.

I, Jean F. Resvick, do hereby certify that on the 10th day of October, 1975, I found evidence of the Northeast Section corner of Section 13 Township 39 North, Range 13 East, Fourth Principal Meridian, as described hereon; and that from this evidence I established a new monument and accessories as described hereon to perpetuate the original location of this corner:

Description of original monument and accessories and subsequent restorations:

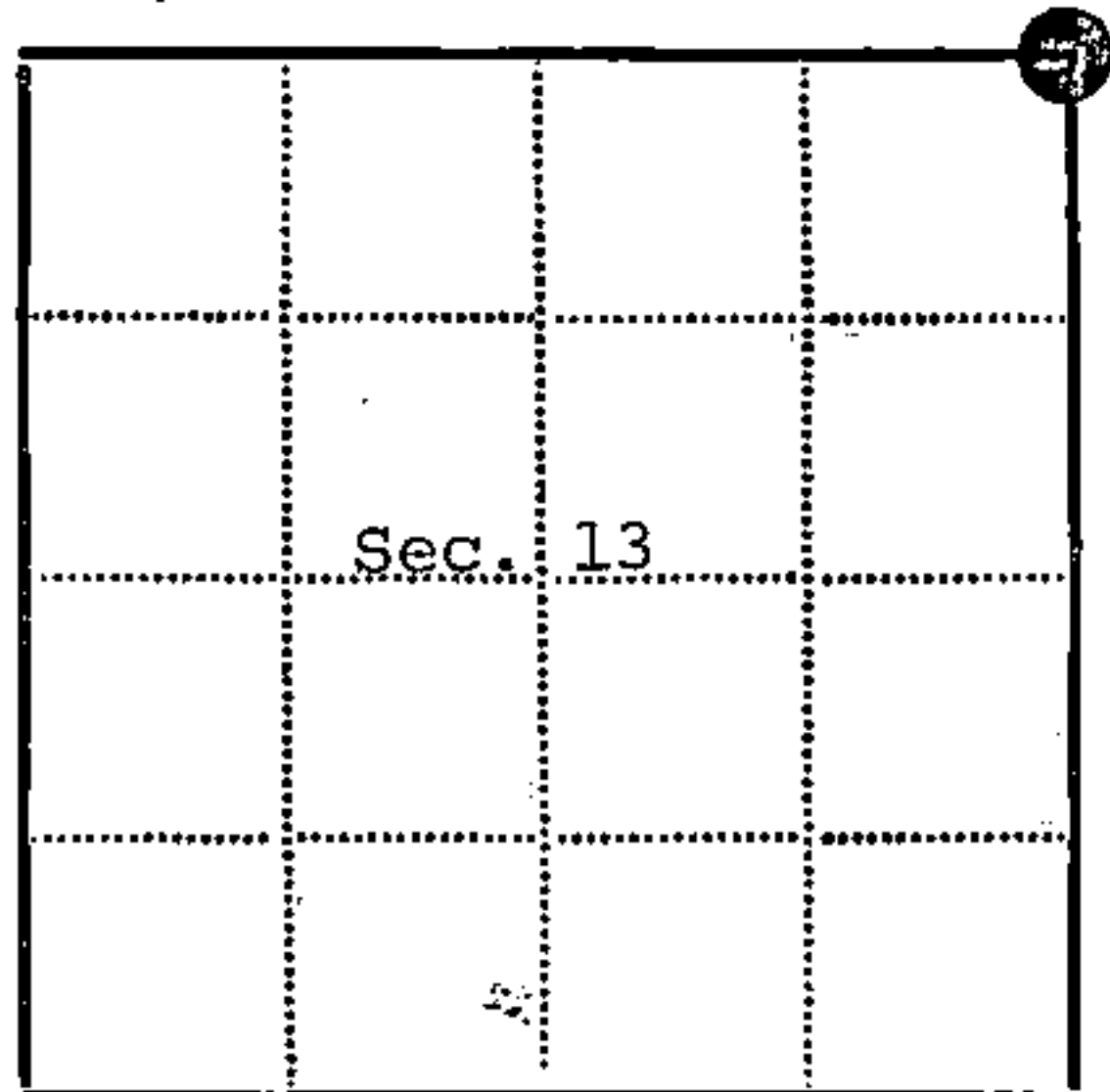
Surveyed in 1858 by Alfred Millard
80 ch. North between Section 13 and 18 set post
Yellow Birch 15, N58W, 70 Lks.
Elm 12, N41E, 69 Lks.
Sugar 14, S30E, 32 Lks.
Yellow Birch 20, S30W, 34 Lks.

Description of corner evidence found:

Found scribed wood post 40.00 chains South of Quarter corner 7 and 12.
Very old stone fence runs South from Section corner S12, S7, S13, S18.
All natural call as recorded in original notes fit North and South.

Description of monument and accessories I established to perpetuate the location of this corner:

Replaced scribed post with 2" inside diameter galvanized iron pipe 5 ft. long filled with concrete cap stamped: T39N, R13, R14E, S12, S7, S13, S18, 1975, S-802
Spruce 8", S88E, 3.40 ft.
Set steel sign post 3.5 ft. NE of monument



● = Corner monument restored
□ =

Resident witnesses.....

Dated at Rhinelander Wisconsin, this 5 day of January 1976.

Signature *Jean F. Resvick* Title Land Surveyor
(County Surveyor, Registered Land Surveyor, or other duly authorized official)

Surveyors Registration No. S-802 DOCUMENT NUMBER 109593

Office of Register of Deeds County of Forest

I hereby certify that the within instrument was filed in this office for record on the 2nd day of July 1976, and was filed in Book No. Page No. of County Records.

Signature *Eugene Stutzman* Title Register of Deeds

Township 39N, Range 13E, Section 13, Index No. J-1, Page No.