

State of Wisconsin }  
County of Forest } ss.

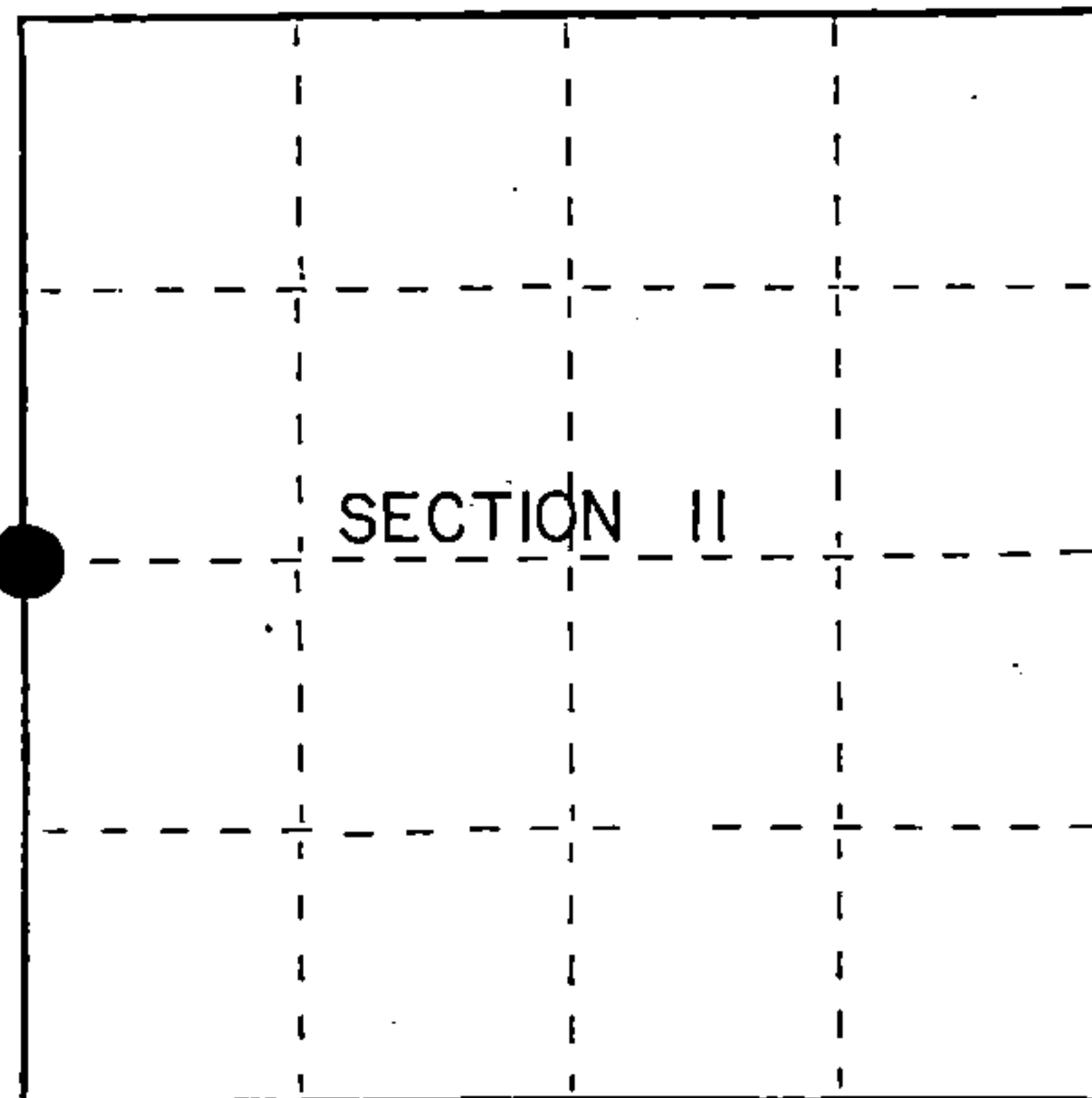
I, Gary L. Pisoni, do hereby  
certify that on the 6th day  
of September, 1990, I found  
evidence of the West Quarter  
corner of Section 11  
Township 39, North, Range  
13 East, Fourth Principal Meridian,  
as described hereon; and that from this evidence  
I established a new monument and accessories  
as described hereon to perpetuate the original  
location of this corner.

Resident witnesses:

.....

.....

.....



● = Corner monument restored.

### History of original corner establishment:

Dependent Resurvey in 1978 Gary L. Kratz and Michael J. Avery. N03°24'E between Sections 10 and 11, at 42.22 chains, proportionate distance, set an aluminum post, 30 inches long, 2½ inches in diameter, with cap marked; T39N, R13E, 1/4, S10, S11, 1978. From which the following bear;

Sugar Maple	8"	S87°E	46 lks.
Sugar Maple	10"	N73°W	30 lks.

### Description of corner evidence found:

Found monument as described, from which the following bear;

S. Maple	12"	S 87°E	30.36 feet (28.66 feet)
S. Maple	12"	N 73°W	19.80 feet (20.42 feet)

Distances in parenthesis are my measurements taken to a nail in side of tree.

### Description of monument and accessories I established to perpetuate the original location of this corner.

Blazed and scribed the following new bearing trees; (Measurements are taken to a nail in side of tree)

S. Maple	12"	N 23°W	18.87 feet
Steel Sign Post		N 20°E	0.62 feet

Dated at Iron River, MI, this 13th day of December, 1990.

Signature Gary Pisoni Title Land Surveyor Registration No 1634  
(County Surveyor, Registered Land Surveyor, or other duly authorized official)

Office of Register of Deeds, County of Forest, I hereby certify that the within  
instrument was filed in this office for record on the 10th day of March, 1993  
at 10:45 o'clock A. M.

Paul Aschebrenner  
(Register of Deeds)

By \_\_\_\_\_ Deputy

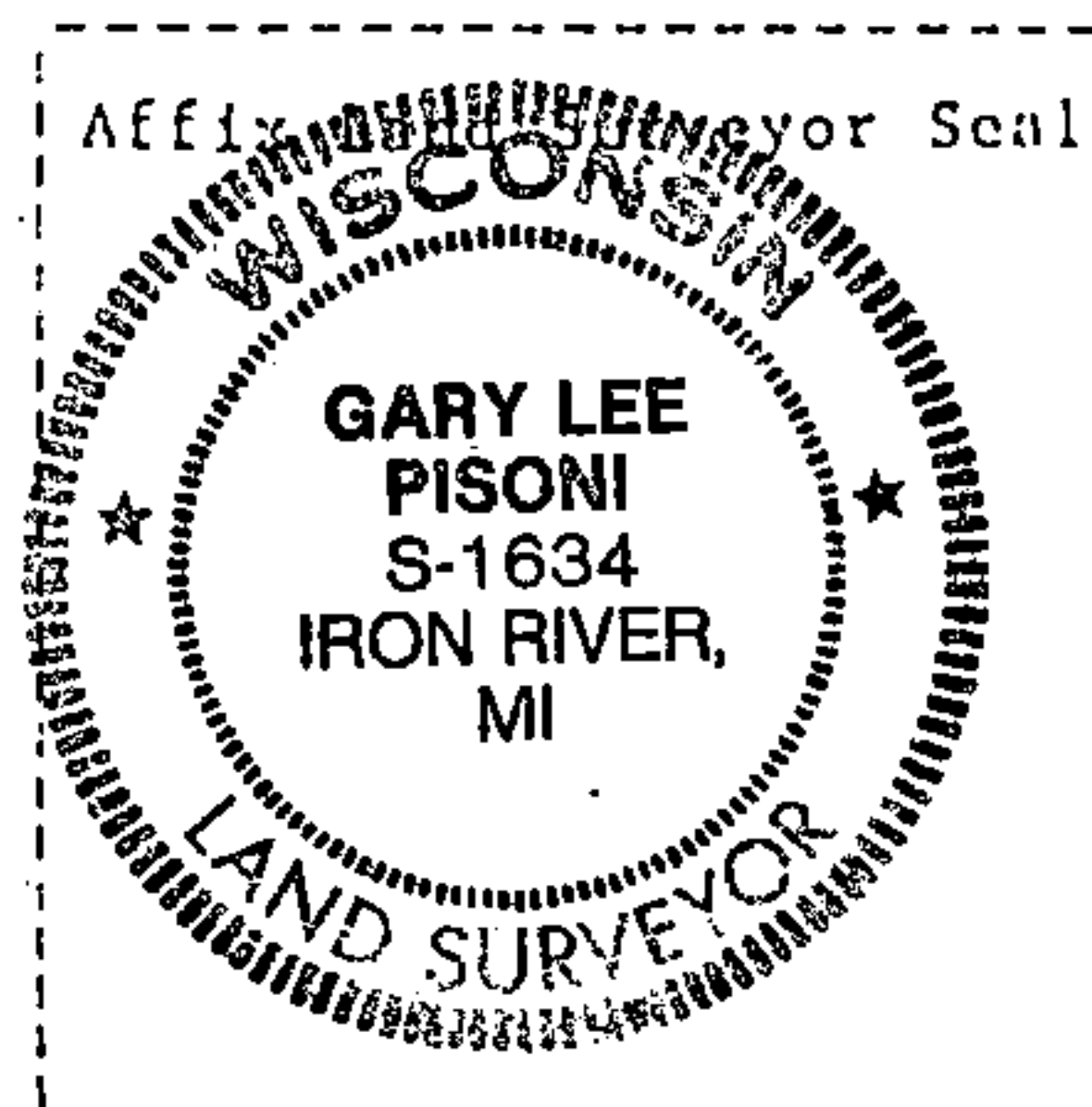
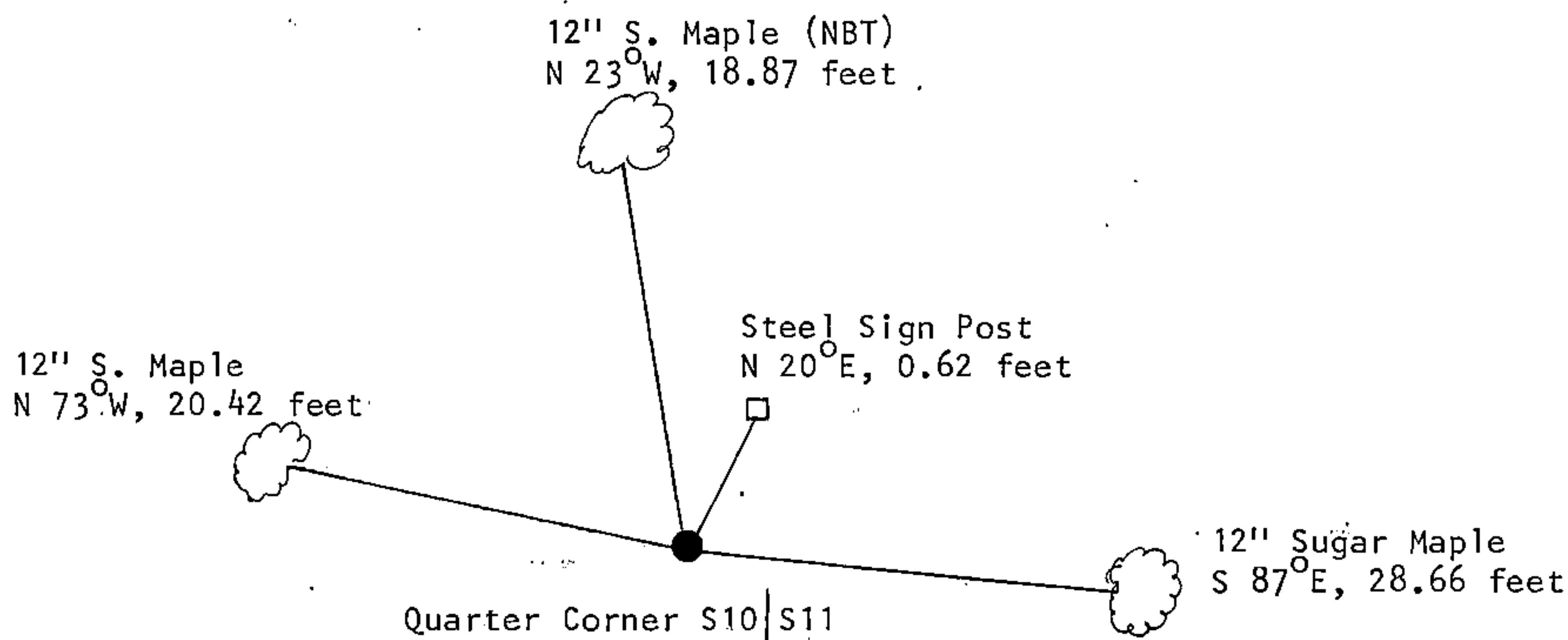
e) Describe any material discrepancy between the location of the corner as restored or reestablished and the location of that corner as previously restored or reestablished by distance and direction. Show the discrepancy on the plan view drawing under (d), above. Show the distances between the corner as previously restored or reestablished and (1) the corner as restored or reestablished, and (2) to at least 2 of the witness monuments shown on the drawing in (d), above.

See drawing below.

(f) Was the corner restored through acceptance of (1) an obliterated evidence location, or, (2) a found perpetuated location?

Restored through acceptance of a found perpetuated location.

(g&h) Was the corner reestablished through lost corner proportionate methods? If so, show the method, including the directions and distances to other public land survey corners used as evidence or used for proportioning in determining the corner location?



(i) I, Gary L. Pisoni  
(type or print name) certify that the corner location shown on this record was determined by me or under my direction and control and that this U.S. Public Land Survey Monument Record is correct and complete to the best of my knowledge and belief.

Signature

Gary L. Pisoni

Date

11/21/91

Survey requested by;

Don Gordon

District Ranger

Date

12/15/92