

Stock No. 26273

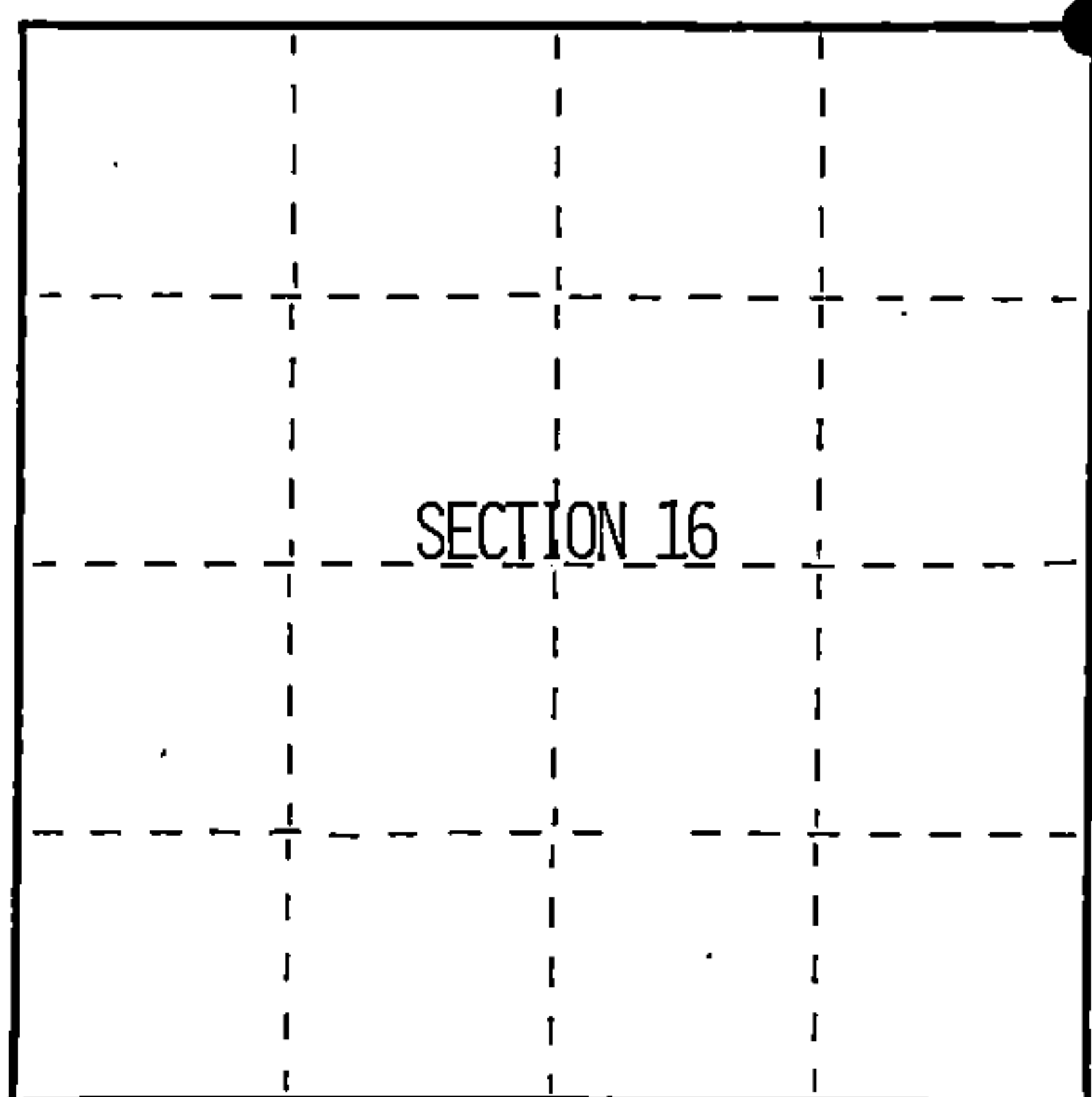
156562

State of Wisconsin }
County of Forest } ss.

I, William B. Cochran, do hereby
certify that on the 1st day
of June, 1994, I found
evidence of the Northeast Section
corner of Section 16
Township 39, North, Range
13 East, Fourth Principal Meridian,
as described hereon; and that from this evidence
I established a new monument and accessories
as described hereon to perpetuate the original
location of this corner.

Resident witnesses:

.....
.....
.....



● = Corner monument restored.

CERTIFIED LAND CORNER RESTORATION

Index No. J-13

History of original corner establishment:

Original survey in 1865 by William E. Daugherty.

80 Chains North between Sections 15 and 16, Set Section post, from which:

Fir	8"	S57°W	101ks
Hemlock	10"	N55°E	151ks

Description of corner evidence found:

No Corner evidence was found.

Description of monument and accessories I established to perpetuate the original location of this corner.

At proportionat measurements North, South, East and West I re-establish the
Corner position. I set a 2½ inch diameter aluminum pipe monument .36 inches long
2½ feet in the ground, with an aluminum cap stamped: T39N, R13E, S9, S10, S15, S16,
1994, S-1107, from Which:

Maple	6"	N22°E	17.79 feet
Maple	13"	S8°E	9.55 feet
Maple	8"	S42°W	23.80 feet
Iron Wood	8"	N37°W	27.55 feet
Steel sign post		North	1.50 feet

Dated at Hiles, Wis., this 7th day of December, 1994

Signature William B. Cochran Title Land Surveyor Registration No. S-1107
(County Surveyor, Registered Land Surveyor, or other duly authorized official)

Office of Register of Deeds, County of Forest, I hereby certify that the within
instrument was filed in this office for record on the 23rd day of August, 1996
at 2:30 o'clock P. M.

(Register of Deeds)

By Paul Tankiewicz Deputy

43913090000

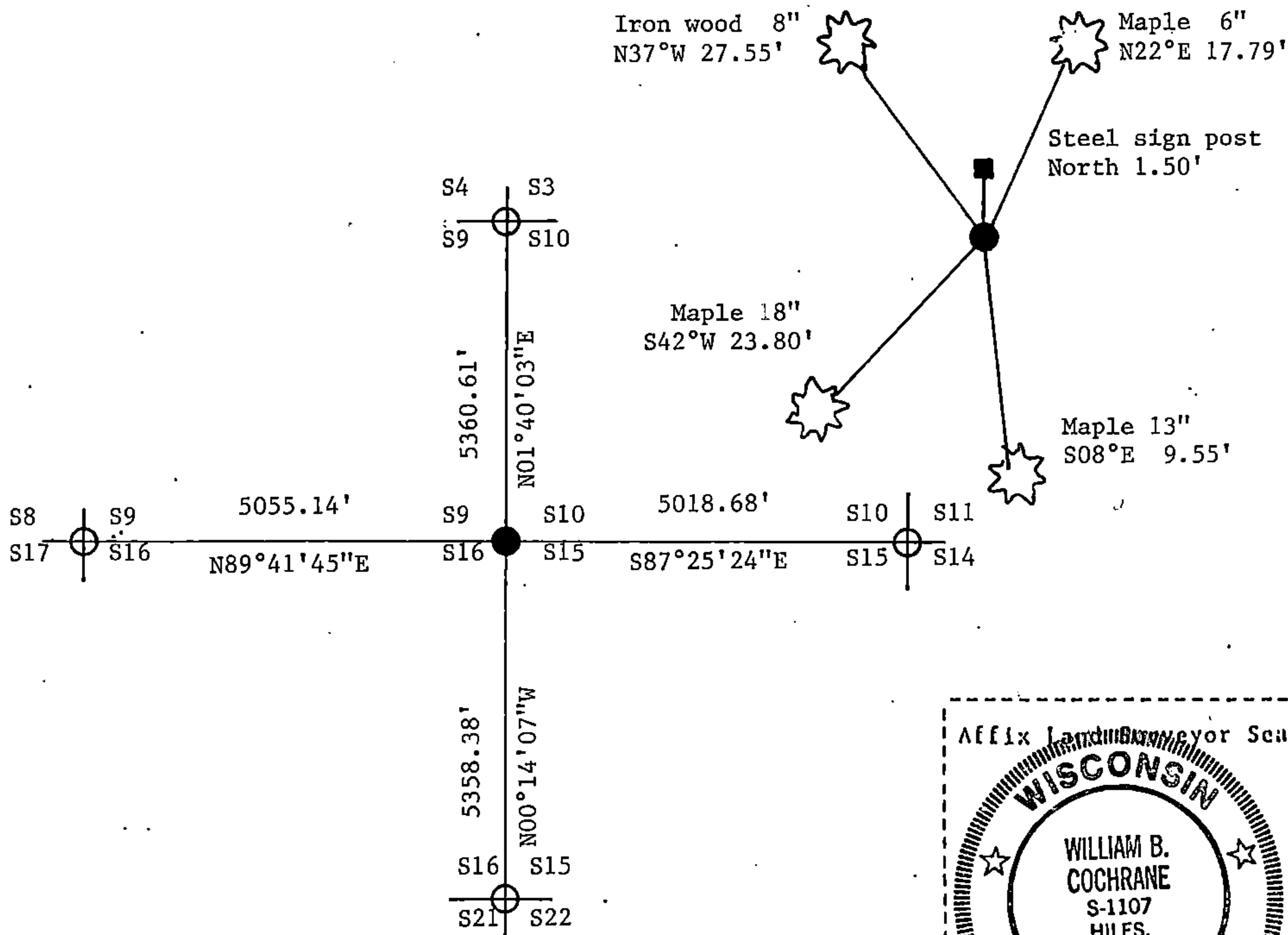
(e) Describe any material discrepancy between the location of the corner as restored or reestablished and the location of that corner as previously restored or reestablished by distance and direction. Show the discrepancy on the plan view drawing under (d), above. Show the distances between the corner as previously restored or reestablished and (1) the corner as restored or reestablished, and (2) to at least 2 of the witness monuments shown on the drawing in (d), above.

See drawing below.

(f) Was the corner restored through acceptance of (1) an obliterated evidence location, or, (2) a found perpetuated location?

Re-established through lost corner proportionate methods.

(g&h) Was the corner reestablished through lost corner proportionate methods? If so, show the method, including the directions and distances to other public land survey corners used as evidence or used for proportioning in determining the corner location?



William B. Cochrane

(i) I, (type or print name) certify that the corner location shown on this record was determined by me or under my direction and control and that this U.S. Public Land Survey Monument Record is correct and complete to the best of my knowledge and belief.

William B. Cochrane 12/7/94
Signature Date

Survey requested by: _____
District Ranger Date