

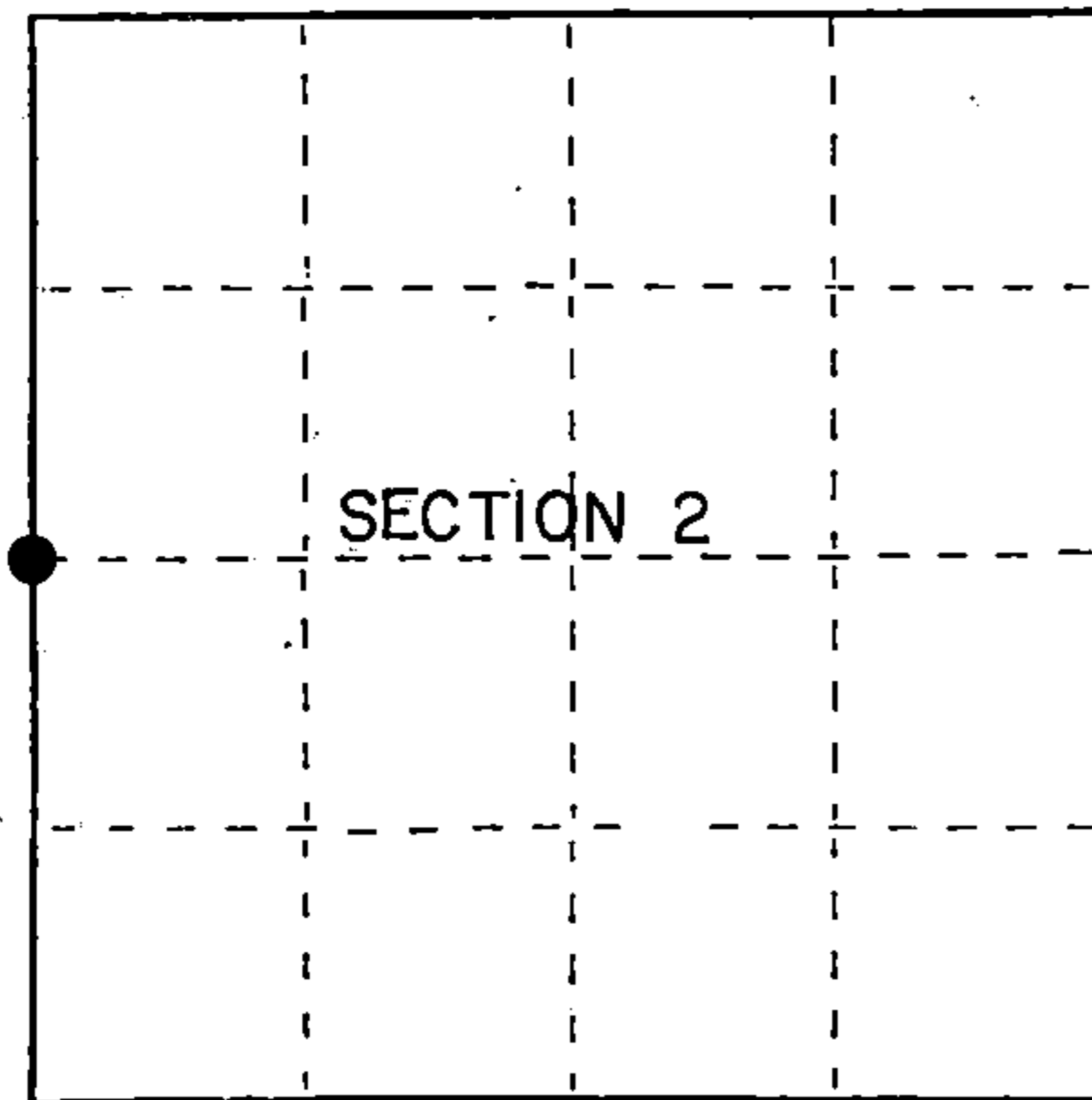
U.S. PUBLIC LAND SURVEY MONUMENT RECORD

Index No. C-17

State of Wisconsin }
County of Forest } ss.

I, Gary L. Pisoni, do hereby
certify that on the 6th day
of August, 1990, I found
evidence of the West quarter
corner of Section 2
Township 39, North, Range
13 East, Fourth Principal Meridian,
as described hereon; and that from this evidence
I established a new monument and accessories
as described hereon to perpetuate the original
location of this corner.

Resident witnesses:



● = Corner monument restored.

History of original corner establishment:

Original Government survey in 1865 by William E. Daugherty and Alex McDill.
South corrected between Sections 2 and 3, at 40.42 chains, set quarter section
post.
Dependent resurvey in 1978 by Gary L. Kratz and Michael J. Avery.

Description of corner evidence found:

Found dependent resurvey monument of 1978, but erroneously set.
No original corner evidence recovered.

Corner position is restored at proportionate distance and on line between the
Southwest and Northwest Section corners of Section 2.

Description of monument and accessories I established to perpetuate the original location of this corner.

At the corner position, set a 2½ inch diameter aluminum pipe monument, 3 feet
long, 3" above the ground surface, with an aluminum cap stamped; T39N, R13E,
1/4, S-3, S-2, 1991, S-1634, from which the following new blazed and scribed
bearing trees bear; (measurements taken to a nail in side of tree)

Balsam	7"	N 18°W	14.45 feet
Balsam	7"	S 49°E	15.09 feet
Balsam	4"	S 24°W	14.07 feet
White Spruce	13"	N 88°W	4.19 feet
BLM Aluminum pipe monument		S 65°14'20"E	31.40 feet
(erroneous mon.)			
Steel sign post		N 49°E	0.83 feet

Dated at Iron River, MI, Ws., this 17th day of June, 1992

Signature Gary L. Pisoni Title Land Surveyor Registration No. S-1634
(County Surveyor, Registered Land Surveyor, or other duly authorized official)

Office of Register of Deeds, County of Forest, I hereby certify that the within
instrument was filed in this office for record on the 10th day of March, 1993
at 10:45 o'clock A M.

Paul Aschmussen
(Register of Deeds)

By _____ Deputy

e) Describe any material discrepancy between the location of the corner as restored or reestablished and the location of that corner as previously restored or reestablished by distance and direction. Show the discrepancy on the plan view drawing under (d), above. Show the distances between the corner as previously restored or reestablished and (1) the corner as restored or reestablished, and (2) to at least 2 of the witness monuments shown on the drawing in (d), above.

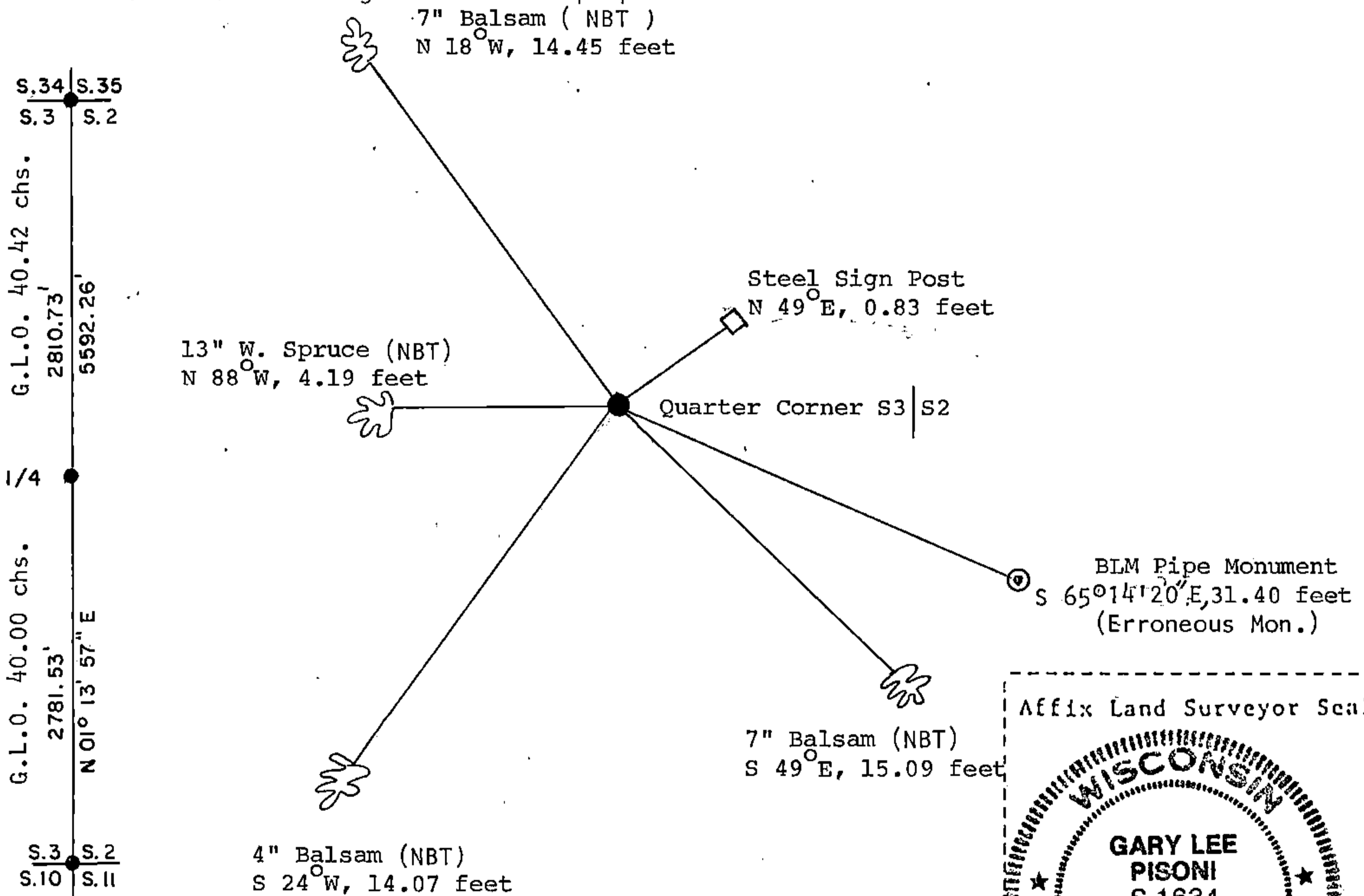
See drawing below.

(f) Was the corner restored through acceptance of (1) an obliterated evidence location, or, (2) a found perpetuated location?

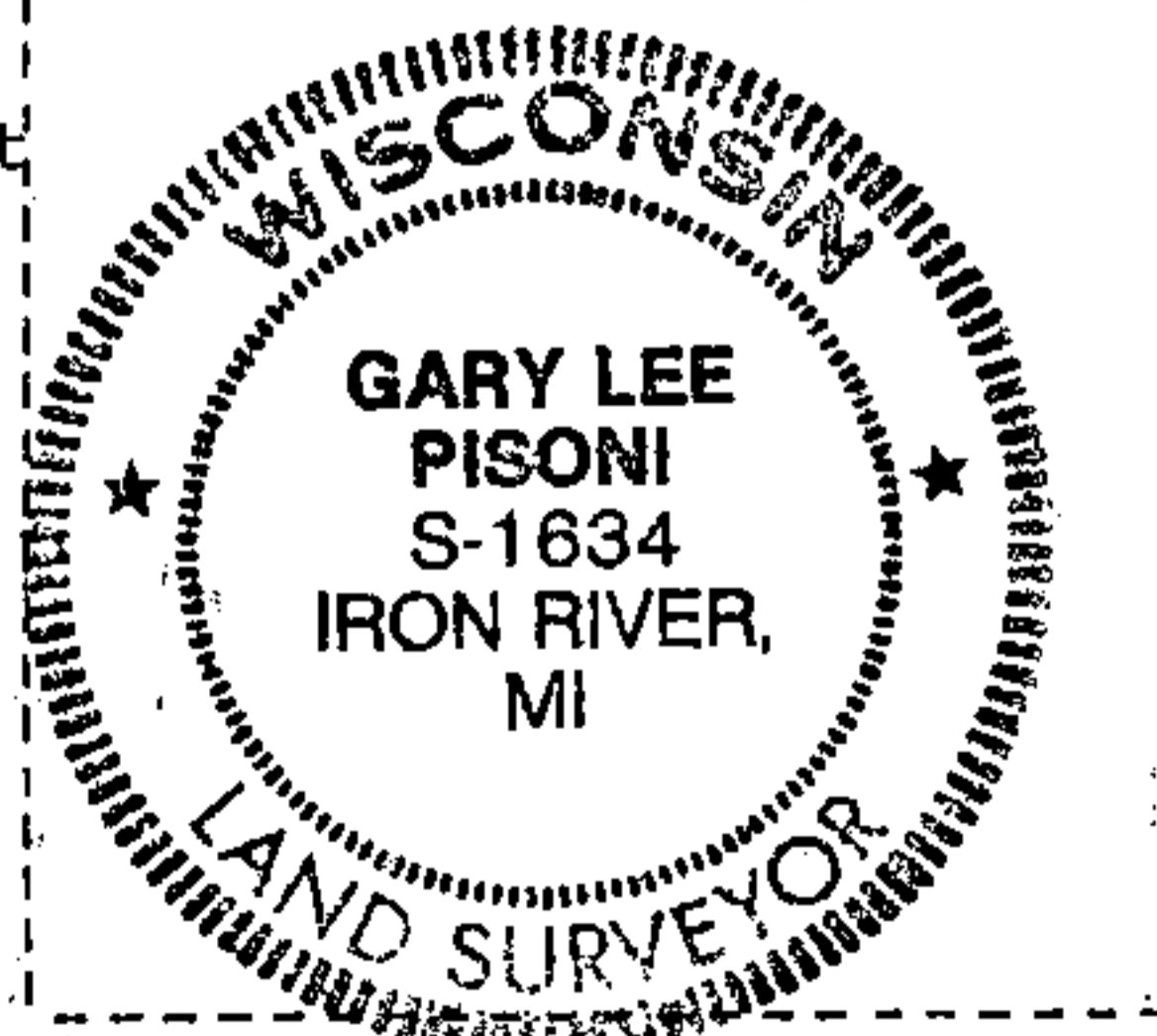
Restored through lost corner proportionate methods.

(g&h) Was the corner reestablished through lost corner proportionate methods? If so, show the method, including the directions and distances to other public land survey corners used as evidence or used for proportioning in determining the corner location?

Re-established through lost corner proportionate methods.



Affix Land Surveyor Seal



(i) I, Gary L. Pisoni
[type or print name] certify that the corner location shown on this record was determined by me or under my direction and control and that this U.S. Public Land Survey Monument Record is correct and complete to the best of my knowledge and belief.

Gary L. Pisoni June 17th 1992
Signature Date

Survey requested by; Pan [unclear] 12/17/92
District Ranger Date