

U.S. PUBLIC LAND SURVEY MONUMENT RECORD

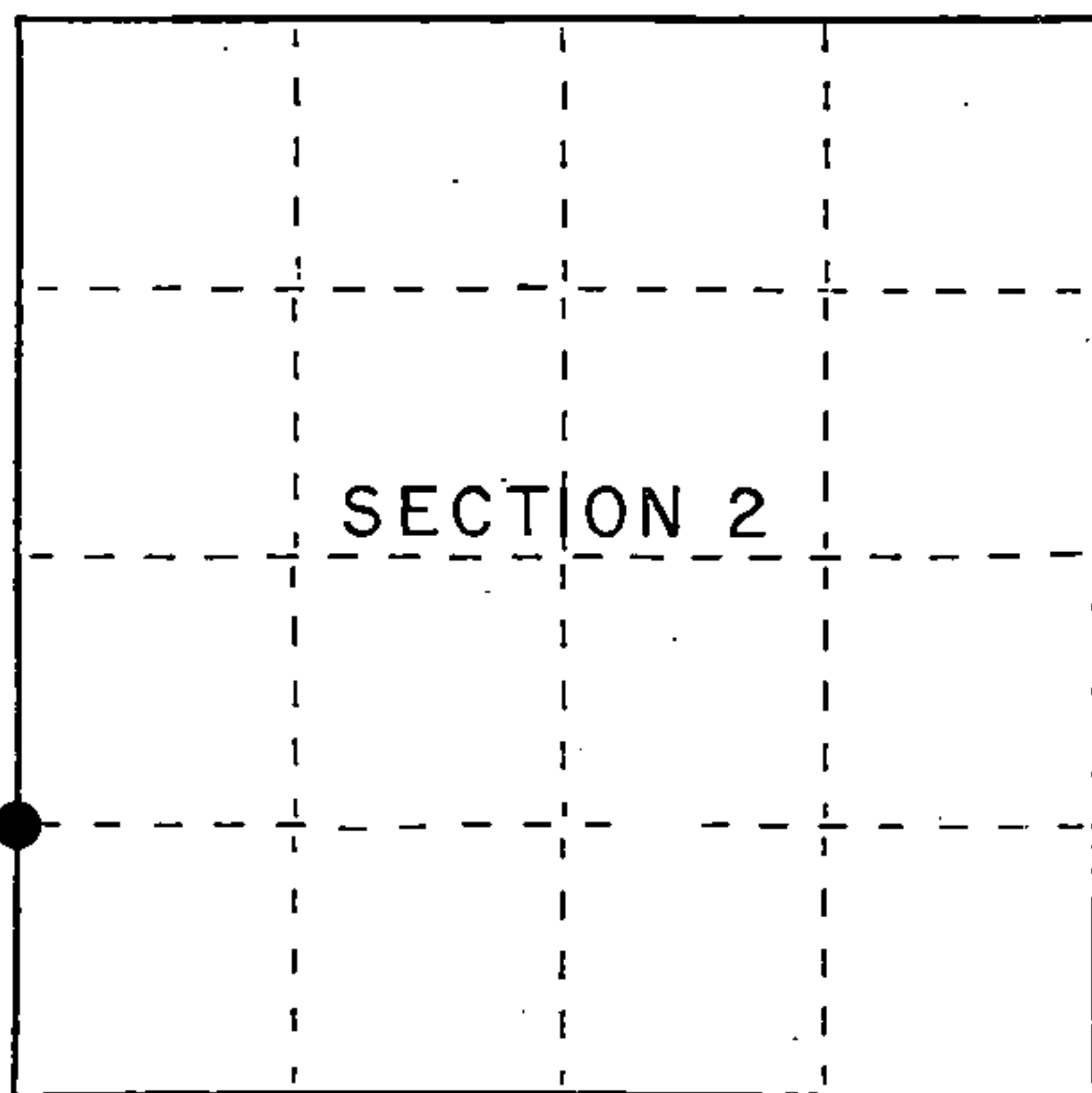
Index No. D-17

State of Wisconsin }
County of Forest } ss.

I, Gary L. Pisoni, do hereby certify that on the 24th day of December, 1991, I found evidence of the South 1/16 corner of between Sections 3 and 2 Township 39 North, Range 13 E, Fourth Principal Meridian, as described hereon; and that from this evidence I established a new monument and accessories as described hereon to perpetuate the original location of this corner.

Resident witnesses:

.....
.....
.....



● = Corner monument restored.

History of original corner establishment:

Dependent resurvey in 1978 by Gary L. Kratz and Michael J. Avery. N 01°13'E between Sections 2 and 3, at 21.08 chains proportionate distance, set an aluminum post, 30 inches long, 2 1/2 inches in diameter, 24 inches in the ground with a cap marked: T39N, R13E, S 1/16, S-3, S-2, 1978 from which the following bear:

Black Spruce 7" S 84°E 42 links
Black Spruce 7" S 36°W 38 links

Description of corner evidence found:

Found monument as described above from which the following bear:

Black Spruce 8" S 35°W 25.26 feet

Description of monument and accessories I established to perpetuate the original location of this corner.

Blazed and scribed the following new bearing tree: (measurement taken to a nail in side of tree)

Black Spruce 7" N 65°W 9.73 feet
Steel sign post East 0.70 feet

Dated at Iron River, MI, this 17th day of June, 1992

Signature Gary L. Pisoni Title Land Surveyor Registration No S-1634
(County Surveyor, Registered Land Surveyor, or other duly authorized official)

Office of Register of Deeds, County of Forest, I hereby certify that the within instrument was filed in this office for record on the 10th day of March, 1993 at 10:45 o'clock M.

Paul Aschenbrenner
(Register of Deeds)

By _____ Deputy

FORM NO. 985-A

H.C. Miller Company

Stock No. 26273

146907

43913031000

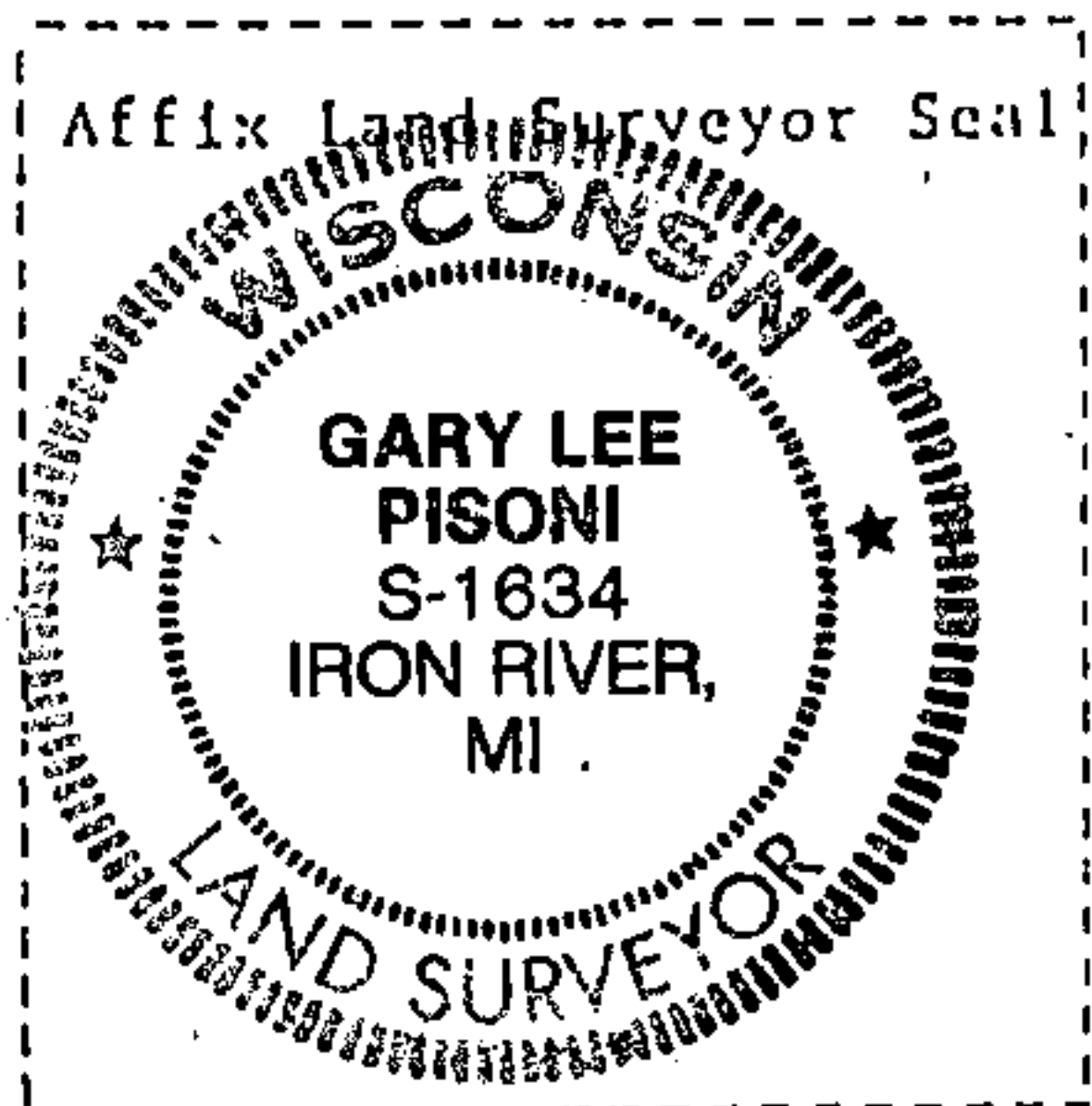
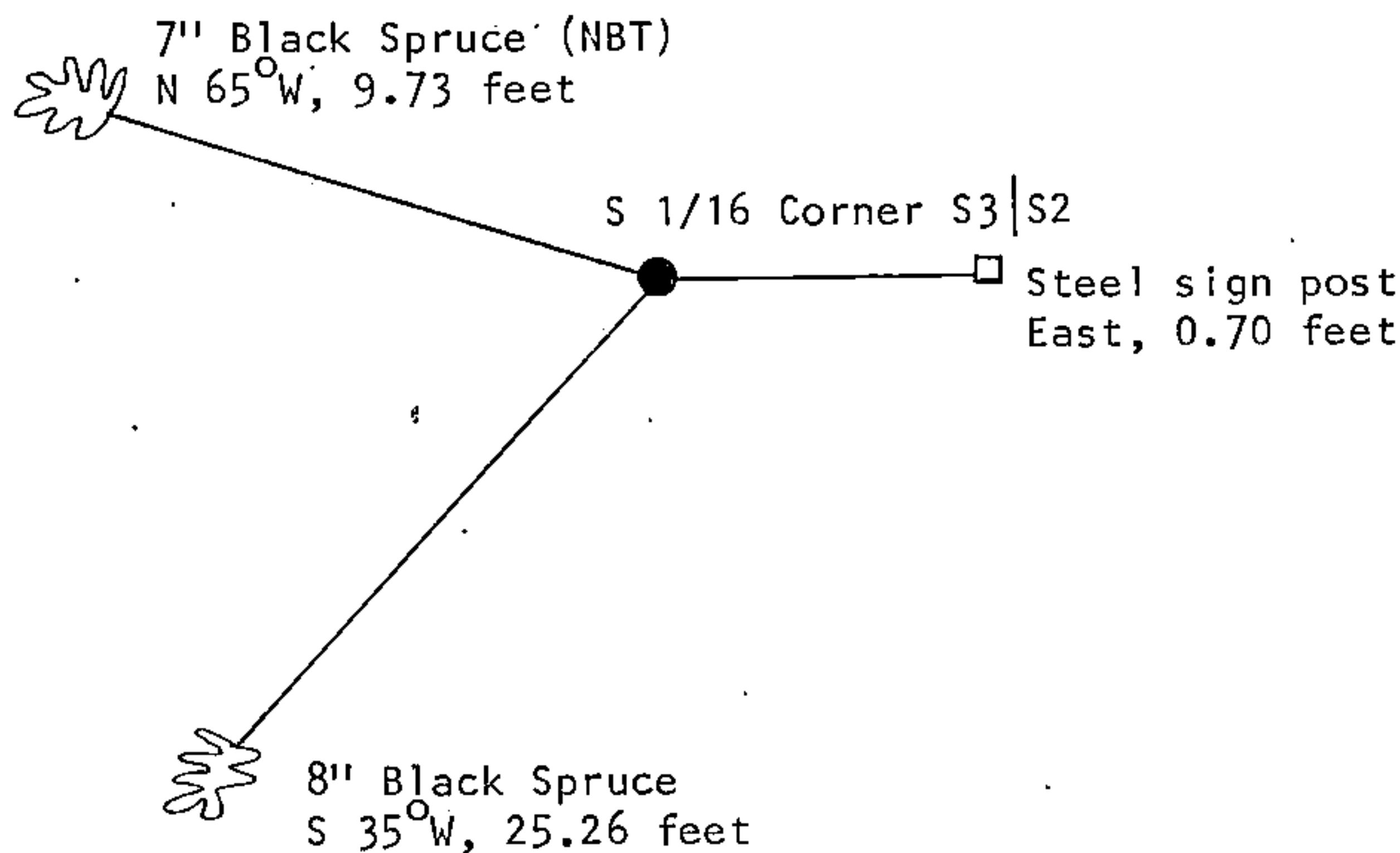
e) Describe any material discrepancy between the location of the corner as restored or reestablished and the location of that corner as previously restored or reestablished by distance and direction. Show the discrepancy on the plan view drawing under (d), above. Show the distances between the corner as previously restored or reestablished and (1) the corner as restored or reestablished, and (2) to at least 2 of the witness monuments shown on the drawing in (d), above.

See drawing below.

(f) Was the corner restored through acceptance of (1) an obliterated evidence location, or, (2) a found perpetuated location?

Restored through acceptance of a found perpetuated location.

(g&h) Was the corner reestablished through lost corner proportionate methods? If so, show the method, including the directions and distances to other public land survey corners used as evidence or used for proportioning in determining the corner location?



Gary L. Pisoni

(i) I, _____ (type or print name) certify that the corner location shown on this record was determined by me or under my direction and control and that this U.S. Public Land Survey Monument Record is correct and complete to the best of my knowledge and belief.

Signature Gary J. Pisoni Date 6/17/92

Survey requested by; Don Gork District Ranger Date 12/15/92

400230183