

U.S. PUBLIC LAND SURVEY MONUMENT RECORD

Index No. E-17

State of Wisconsin }
 County of Forest } ss.

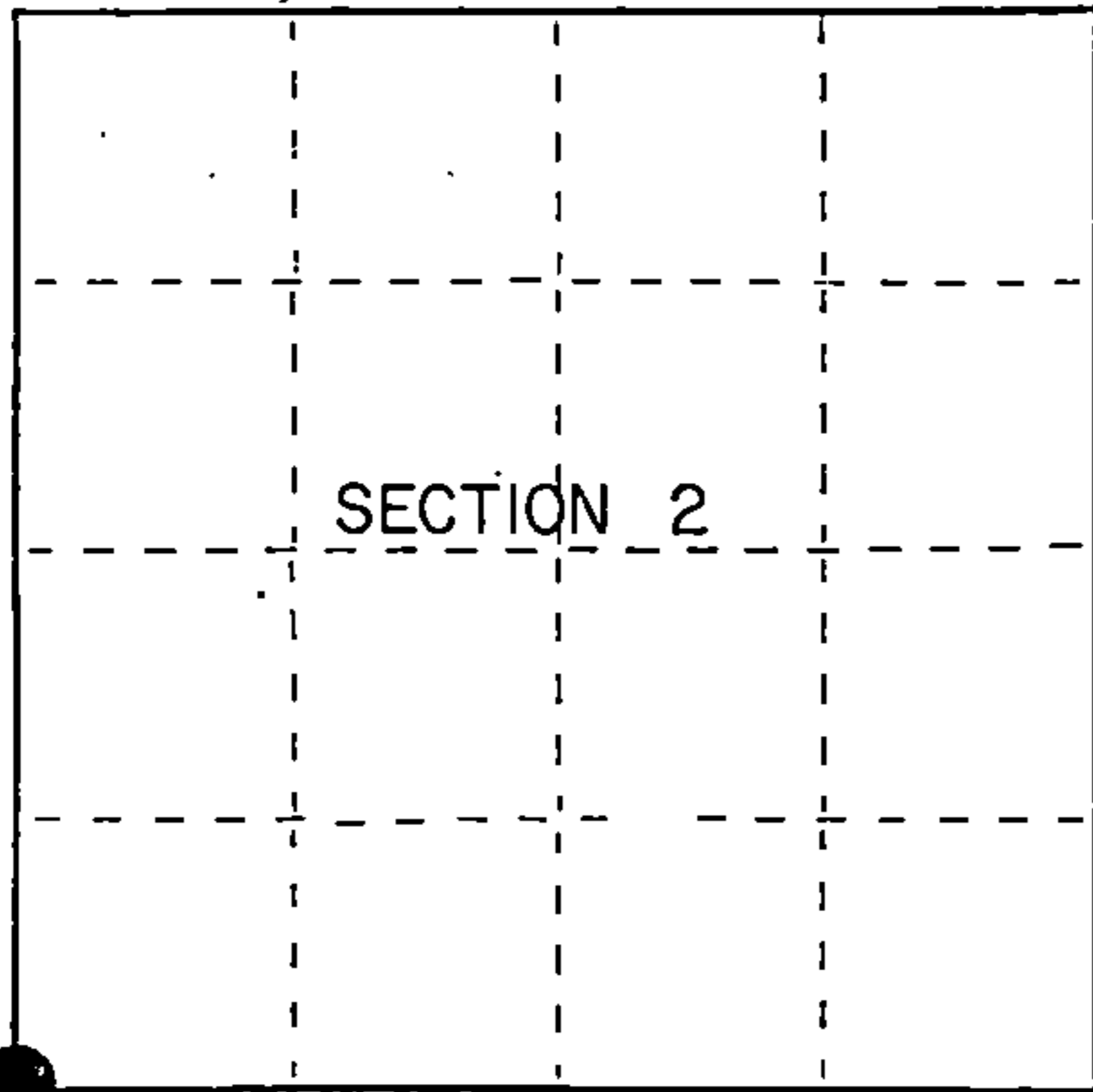
I, Gary L. Pisoni, do hereby certify that on the 8th day of July, 1990, I found evidence of the Southwest Section corner of Section 2 Township 39, North, Range 13 East, Fourth Principal Meridian, as described hereon; and that from this evidence I established a new monument and accessories as described hereon to perpetuate the original location of this corner.

Resident witnesses:

.....

.....

.....



● = Corner monument restored.

History of original corner establishment:

Dependent Resurvey in 1978 by Gary L. Kratz and Michael J. Avery. N03°24'E between Sections 10 and 11, at 84.44 chains, proportionate distance, set an aluminum post, 30 inches long, 2½ inches in diameter with cap mkd; T39N R13E, S2, S3, S10, S11, 1978. From which the following bear;

Cherry	4"	S69°E	119 lks.
Maple	8"	S88°W	56 lks.

Description of corner evidence found:

Found monument as described, from which the following bear;

Red Maple	16"	S 84°W	36.53 feet
-----------	-----	--------	------------

Description of monument and accessories I established to perpetuate the original location of this corner. Blazed and scribed the following new bearing trees; (Measurements are taken to a nail on side of tree)

Popple	7"	N 86°E	29.41 feet
Popple	7"	N 51°W	8.08 feet
Steel Sign Post		South	0.75 feet

Dated at Iron River, MI, ~~MS~~, this 13th day of December, 1990

Signature Gary L. Pisoni Title Land Surveyor Registration No. S-1634
 (County Surveyor, Registered Land Surveyor, or other duly authorized official)

Office of Register of Deeds, County of Forest, I hereby certify that the within instrument was filed in this office for record on the 04th day of March, 1993 at 10:45 o'clock A M.

Paul Aschenbrenner
 (Register of Deeds)

By.....Deputy

FORM NO. 985-A

H.C. Miller Company
 PUBLISHERS

Stock No. 26273

146911

4291303000

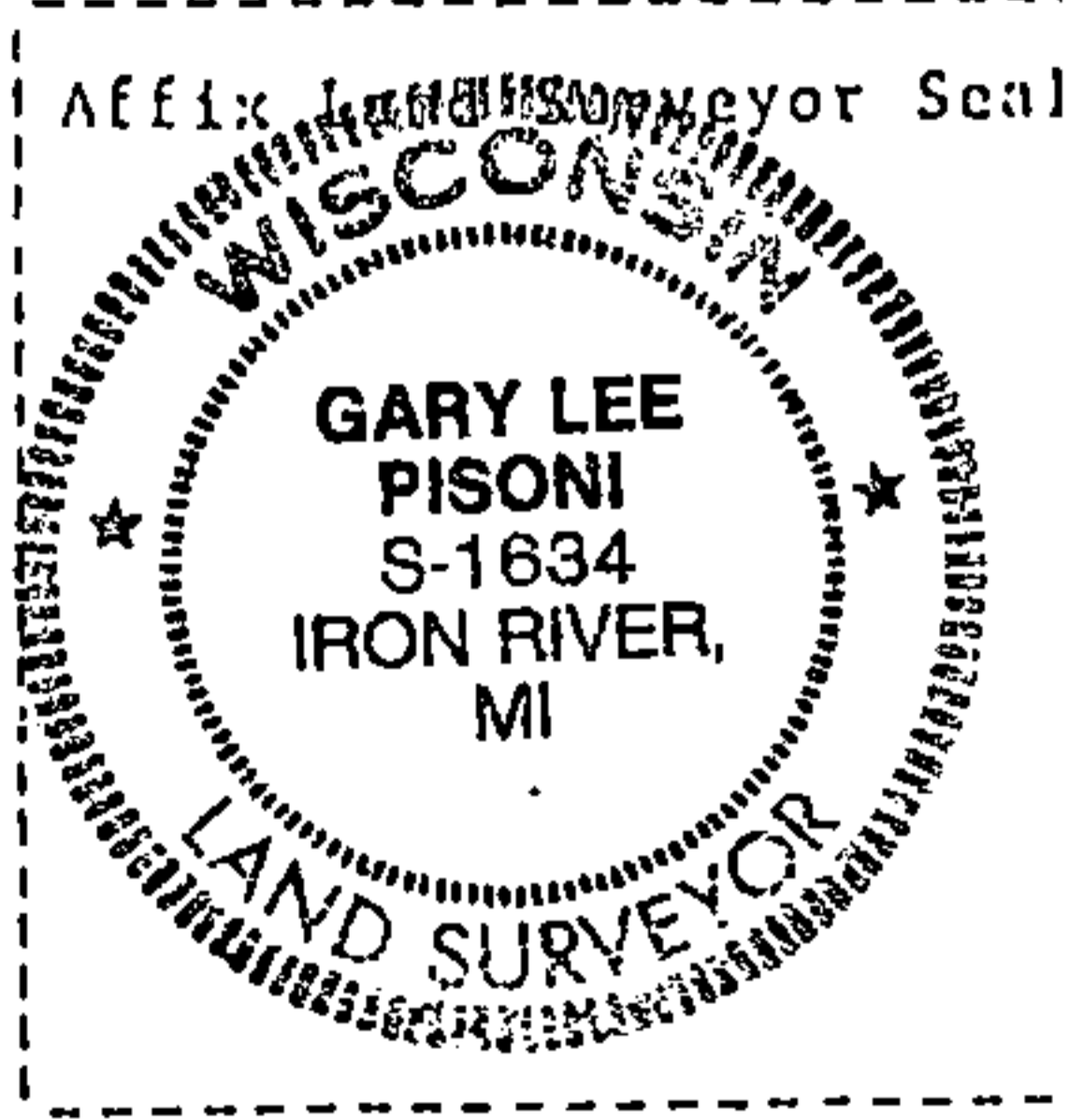
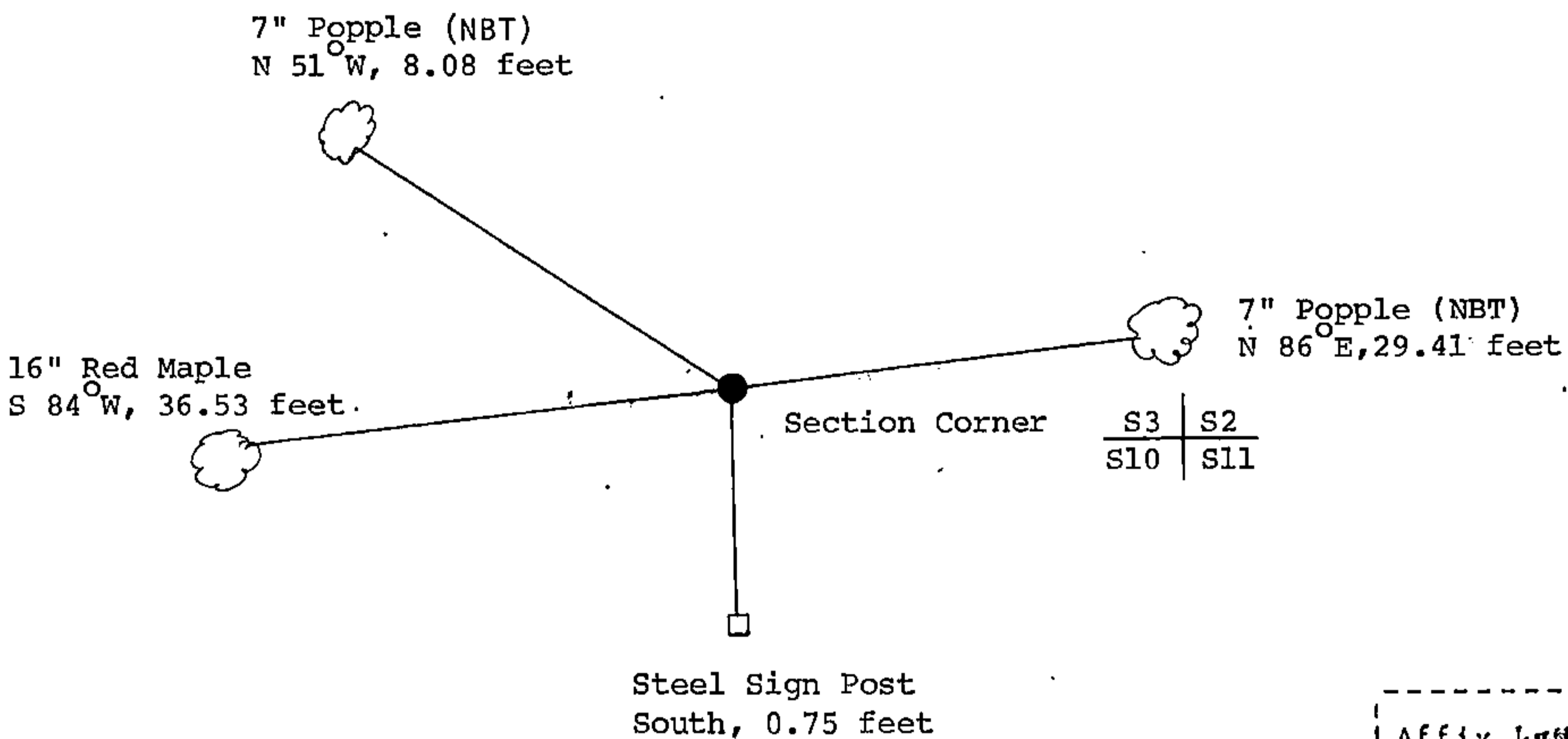
e) Describe any material discrepancy between the location of the corner as restored or reestablished and the location of that corner as previously restored or reestablished by distance and direction. Show the discrepancy on the plan view drawing under (d), above. Show the distances between the corner as previously restored or reestablished and (1) the corner as restored or reestablished, and (2) to at least 2 of the witness monuments shown on the drawing in (d), above.

See drawing below.

(f) Was the corner restored through acceptance of (1) an obliterated evidence location, or, (2) a found perpetuated location?

Restored through acceptance of a found perpetuated location.

(g/h) Was the corner reestablished through lost corner proportionate methods? If so, show the method, including the directions and distances to other public land survey corners used as evidence or used for proportioning in determining the corner location?



(i) I, Gary L. Pisoni (type or print name) certify that the corner location shown on this record was determined by me or under my direction and control and that this U.S. Public Land Survey Monument Record is correct and complete to the best of my knowledge and belief.

Gary L. Pisoni 11/21/91
Signature Date

Survey requested by; Cam Gordon 12/15/92
District Ranger Date