

U.S. PUBLIC LAND SURVEY MONUMENT RECORD

Index No. C-19

State of Wisconsin }
County of Forest } ss.

History of original corner establishment:
Dependent resurvey in 1978 by Gary L. Kratz and Michael J. Avery.

I, Gary L. Pisoni, do hereby certify that on the 21st day of January, 1992, I found evidence of the center quarter corner of Section 2, Township 39 North, Range 13 E, Fourth Principal Meridian, as described hereon; and that from this evidence I established a new monument and accessories as described hereon to perpetuate the original location of this corner.

Description of corner evidence found:

Found dependent resurvey monument but erroneously set.

Corner position restored at the intersection of the straight lines between opposing quarter corner positions on the perimeter of Section 2.

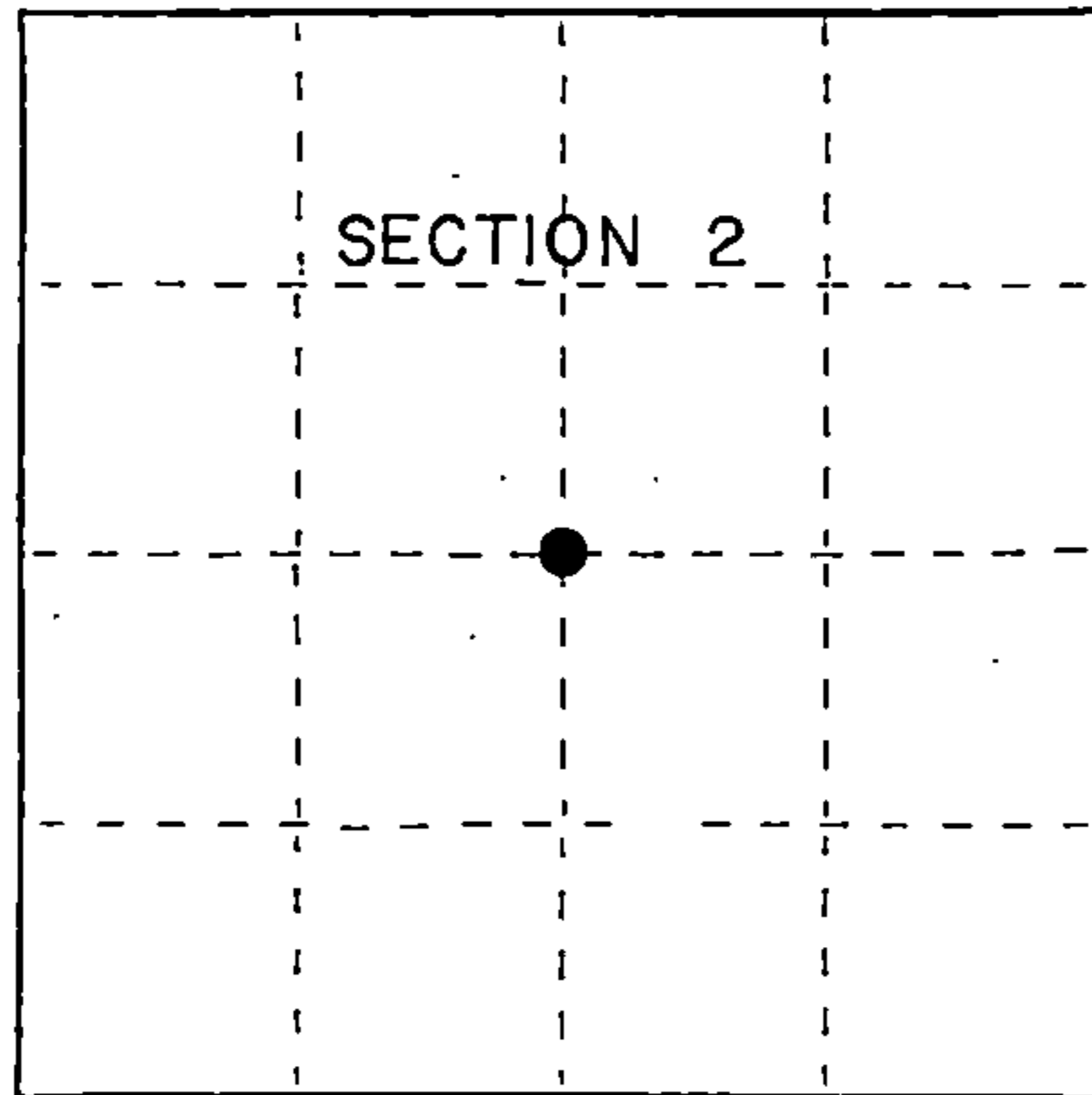
Resident witnesses:

.....
.....
.....

Description of monument and accessories I established to perpetuate the original location of this corner.

At the corner position, set a 1 inch diameter aluminum pipe monument, 5 feet long, 4 inches above the ground surface with an aluminum cap stamped: T39N, R13E, C 1/4, S-2, 1991, S-1634 from which the following new blazed and scribed bearing trees bear: (measurement taken to a nail in side of tree)

Cedar	10"	N 12°E	13.63 feet
Cedar	11"	S 06°E	23.14 feet
BLM aluminum pipe monument (erroneous mon.)		N 59°46'53"E	4.30 feet
Steel sign post		East	0.60 feet



Dated at Iron River, MI, this 17th day of June, 1992

Signature: Gary L. Pisoni Title: Land Surveyor Registration No. S-1634
(County Surveyor, Registered Land Surveyor, or other duly authorized official)

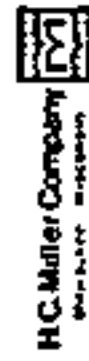
Office of Register of Deeds, County of Forest, I hereby certify that the within instrument was filed in this office for record on the 10th day of March, 1993 at 10:45 o'clock A.M.

Paul Hochbrenner
(Register of Deeds)

By..... Deputy

● = Corner monument restored.

FORM NO. 985-A



Stock No. 26273

146903

43913022020

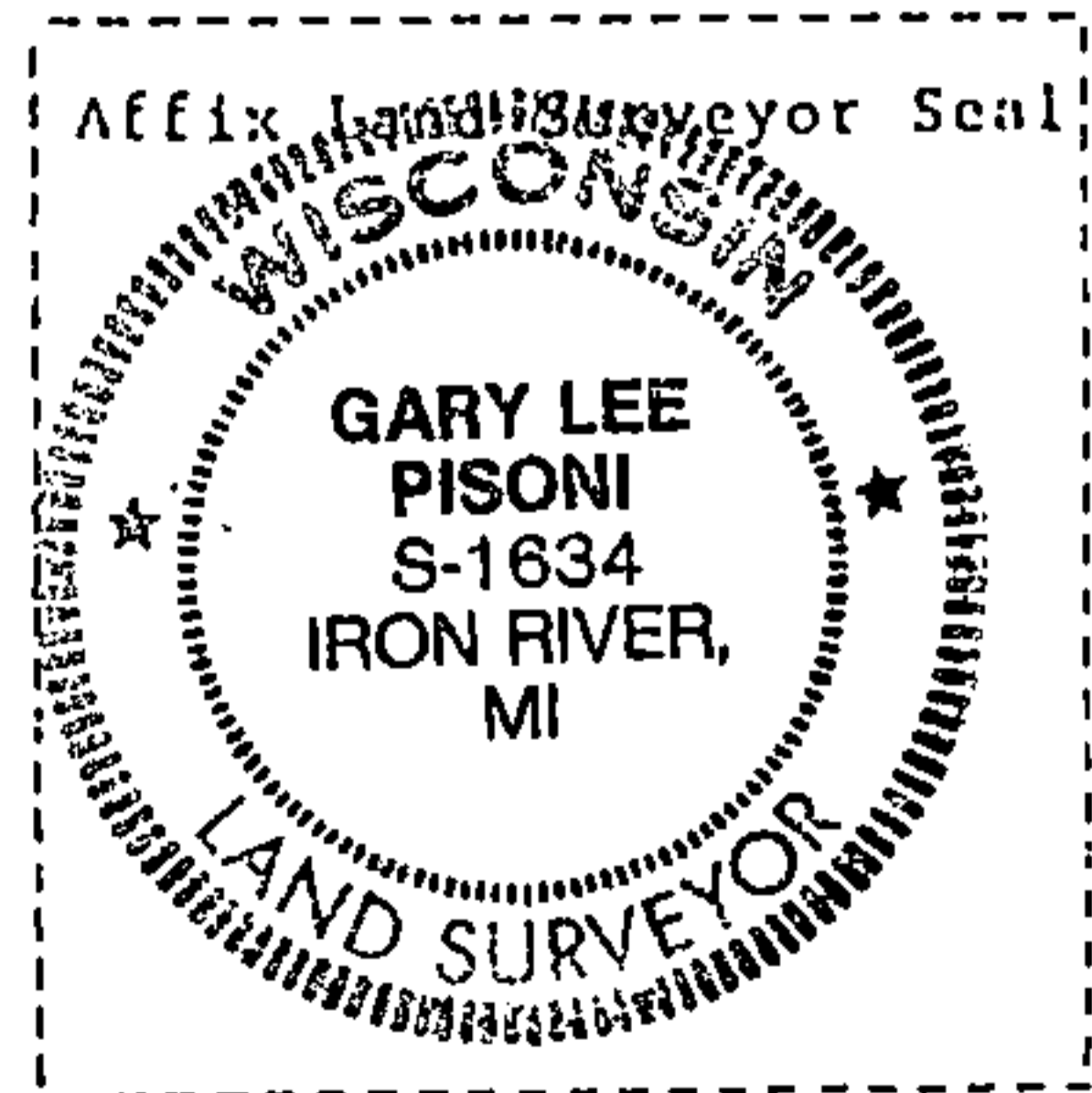
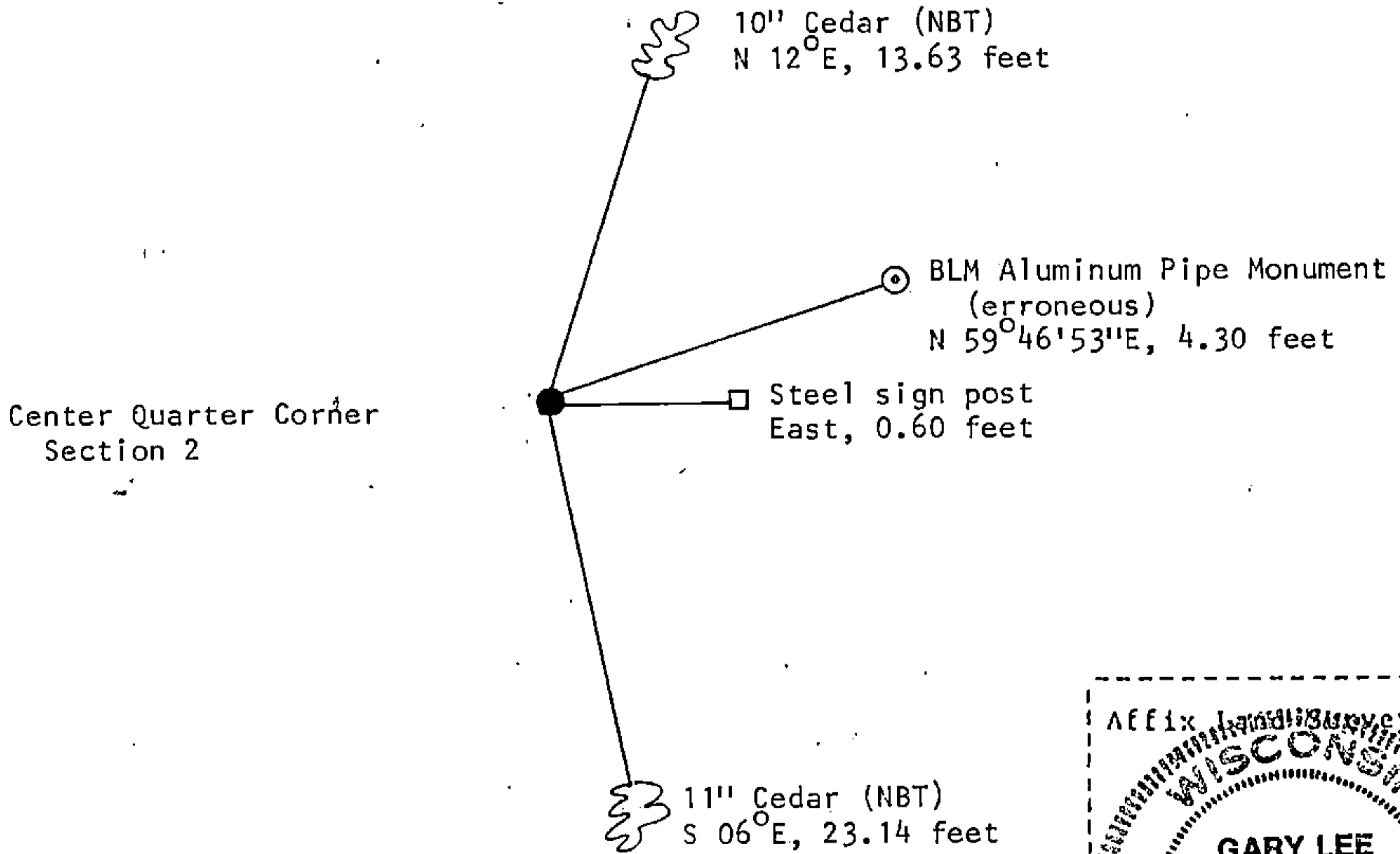
e) Describe any material discrepancy between the location of the corner as restored or reestablished and the location of that corner as previously restored or reestablished by distance and direction. Show the discrepancy on the plan view drawing under (d), above. Show the distances between the corner as previously restored or reestablished and (1) the corner as restored or reestablished, and (2) to at least 2 of the witness monuments shown on the drawing in (d), above.

See drawing below

(f) Was the corner restored through acceptance of (1) an obliterated evidence location, or, (2) a found perpetuated location?

Restored corner position at the intersection of the straight lines between opposing quarter corner positions on the perimeter of Section 2.

(gkh) Was the corner reestablished through lost corner proportionate methods? If so, show the method, including the directions and distances to other public land survey corners used as evidence or used for proportioning in determining the corner location?



(i) I, Gary L. Pisoni
(type or print name) certify that the corner location shown on this record was determined by me or under my direction and control and that this U.S. Public Land Survey Monument Record is correct and complete to the best of my knowledge and belief.

Gary L. Pisoni 6/17/92
Signature Date

Survey requested by: Cam Bardin 12/18/92
District Ranger Date