

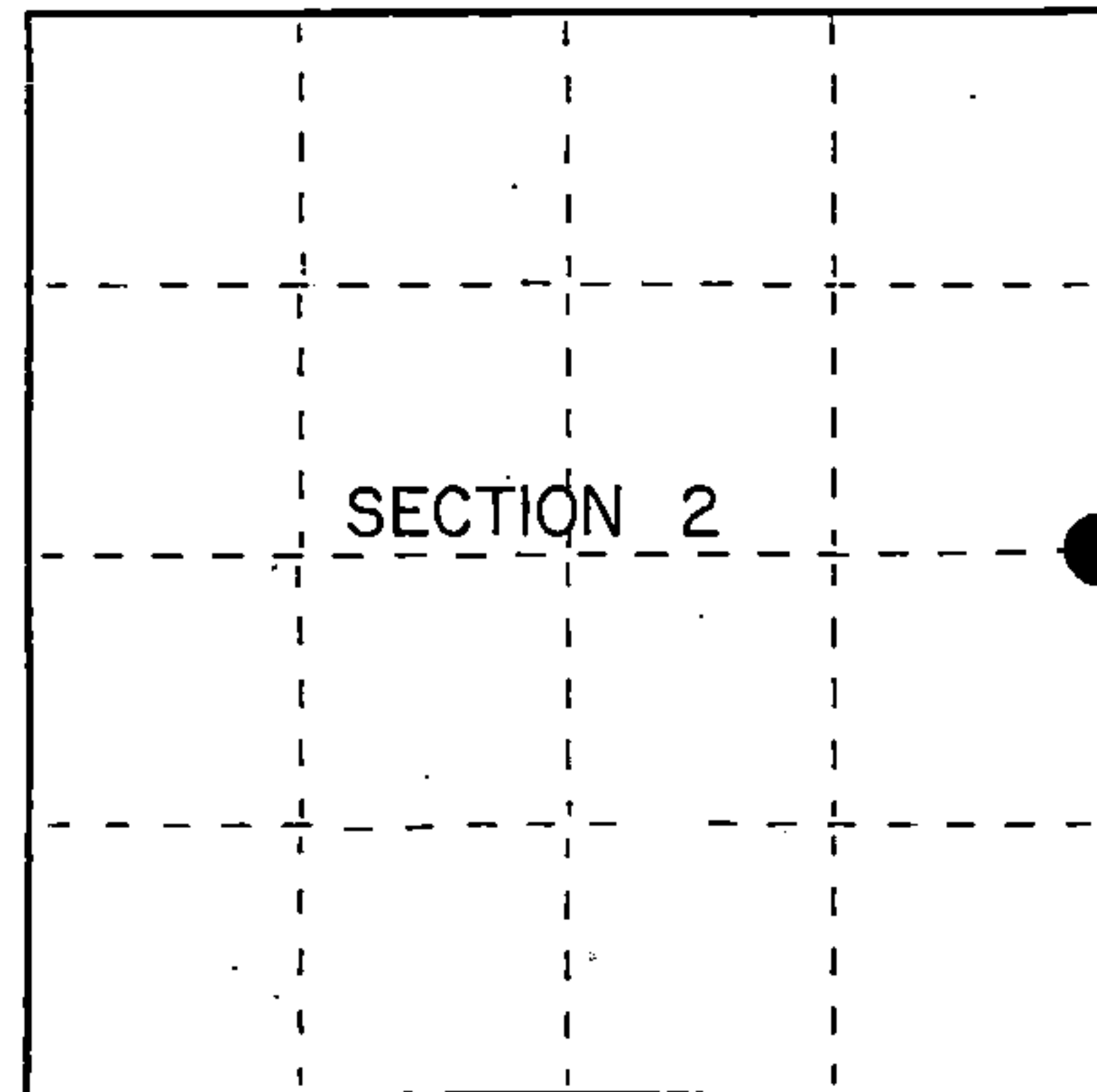
U.S. PUBLIC LAND SURVEY MONUMENT RECORD

Index No. C-21

State of Wisconsin }
County of Forest } ss.

I, Gary L. Pisoni, do hereby
certify that on the 19th day
of June, 1990, I found
evidence of the East Quarter
corner of Section 2
Township 39, North, Range
13 East, Fourth Principal Meridian,
as described hereon; and that from this evidence
I established a new monument and accessories
as described hereon to perpetuate the original
location of this corner.

Resident witnesses:



● = Corner monument restored.

History of original corner establishment:

Dependent Resurvey in 1978 by Michael J. Avery and Gary L. Kratz. N02°58'E,
between Sections 1 and 2, at 41.86 chains, proportionate distance, set a
copperweld, 2 inches below the surface of the road, with cap mkd; T39N, R13E,
1/4, S1, S2, 1978. From which the following bear;

Maple	10"	S87°E	42 lks.
Elm	11"	S81°W	58 lks.

Description of corner evidence found:

Found monument as described, monument located below blacktop surface and set
P.K. nail above monument.

From which the following bear;

S. Maple	13"	N 87°E	27.51 feet
----------	-----	--------	------------

Description of monument and accessories I established to perpetuate the original location of this corner.

Blazed and scribed the following new bearing trees; (Measurements taken to nail
in side of tree).

Sugar Maple	9"	N 33°E	73.91 feet
Sugar Maple	8"	S 77°W	42.84 feet
Sugar Maple	9"	N 47°W	67.56 feet

Dated at Iron River, MI, this 13th day of December, 1990

Signature Gary L. Pisoni Title Land Surveyor Registration No. S-1634
(County Surveyor, Registered Land Surveyor, or other duly authorized official)

Office of Register of Deeds, County of Forest, I hereby certify that the within
instrument was filed in this office for record on the 10th day of March, 1993
at 10:45 o'clock A. M.

Paul Aschenbrenner
(Register of Deeds)

By _____ Deputy

FORM NO. 985-A

ASCEMILLER COMPANY
"DESIGNING THE FUTURE"

Stock No. 26273

146904

43913022000

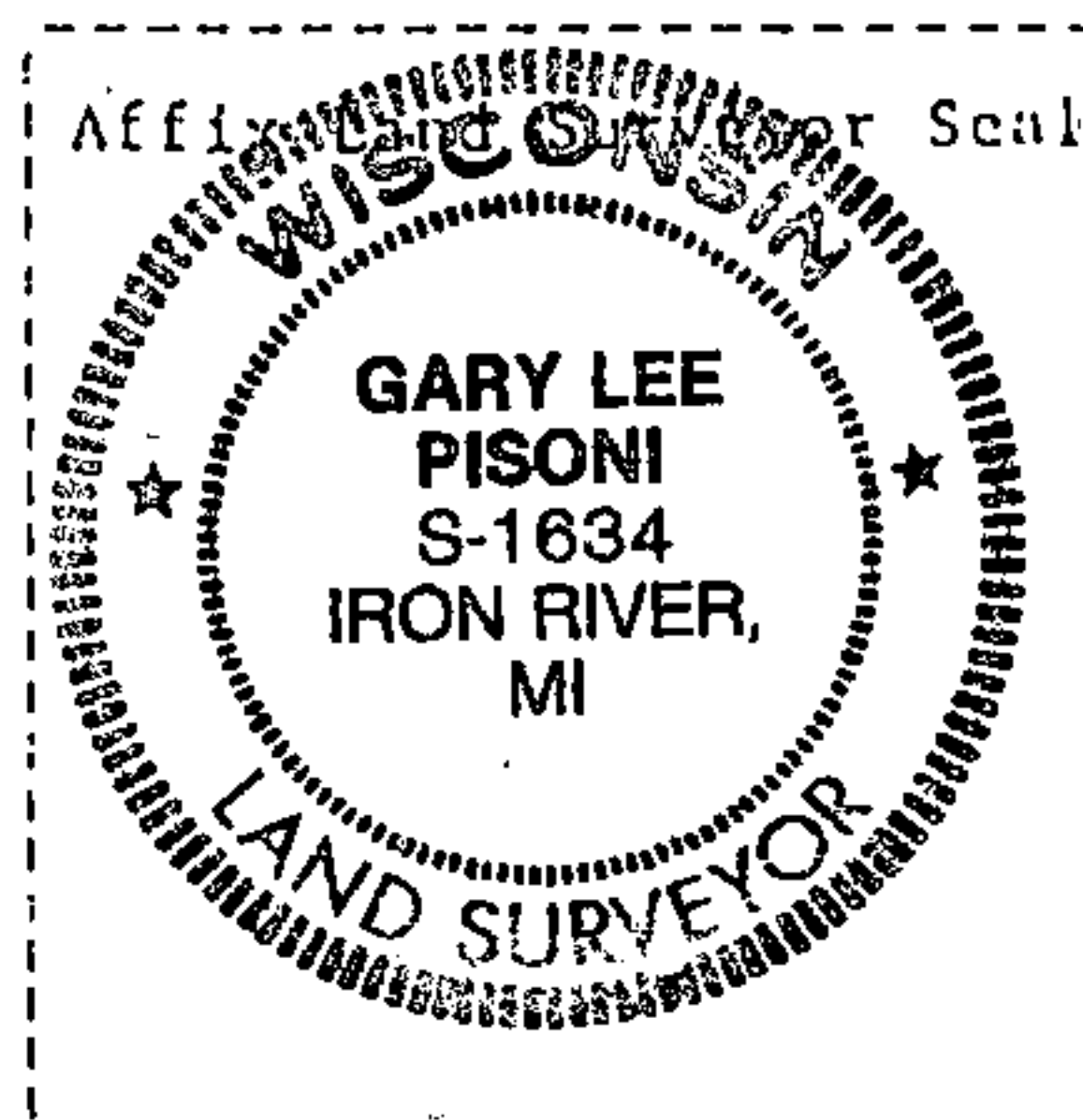
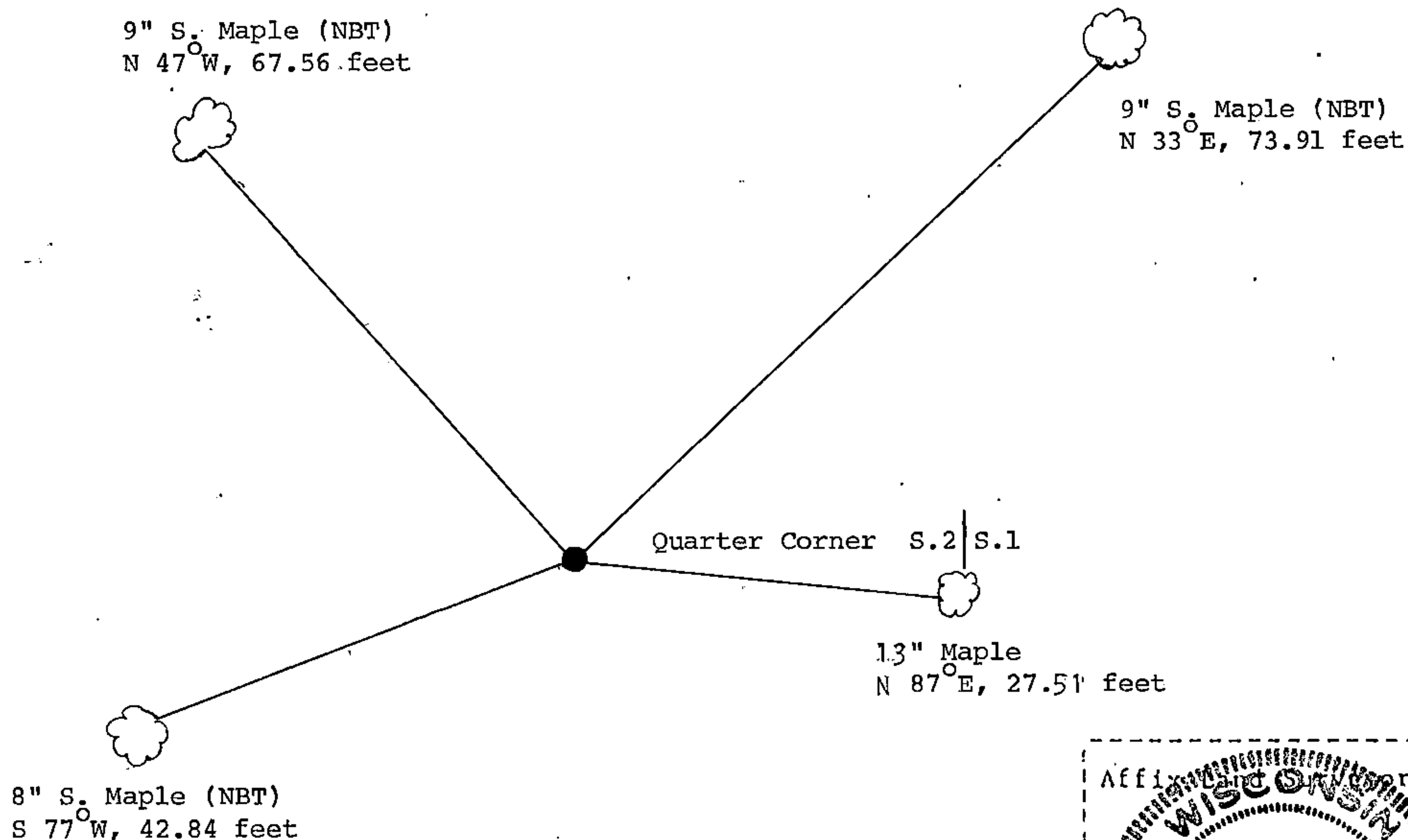
- (e) Describe any material discrepancy between the location of the corner as restored or reestablished and the location of that corner as previously restored or reestablished by distance and direction. Show the discrepancy on the plan view drawing under (d), above. Show the distances between the corner as previously restored or reestablished and (1) the corner as restored or reestablished, and (2) to at least 2 of the witness monuments shown on the drawing in (d), above.

See drawing below.

- (f) Was the corner restored through acceptance of (1) an obliterated evidence location, or, (2) a found perpetuated location?

Restored through acceptance of a found perpetuated location.

- (g&h) Was the corner reestablished through lost corner proportionate methods? If so, show the method, including the directions and distances to other public land survey corners used as evidence or used for proportioning in determining the corner location?



- (i) I, Gary L. Pisoni (type or print name) certify that the corner location shown on this record was determined by me or under my direction and control and that this U.S. Public Land Survey Monument Record is correct and complete to the best of my knowledge and belief.

Signature

Date

Survey requested by;

District Ranger

Date