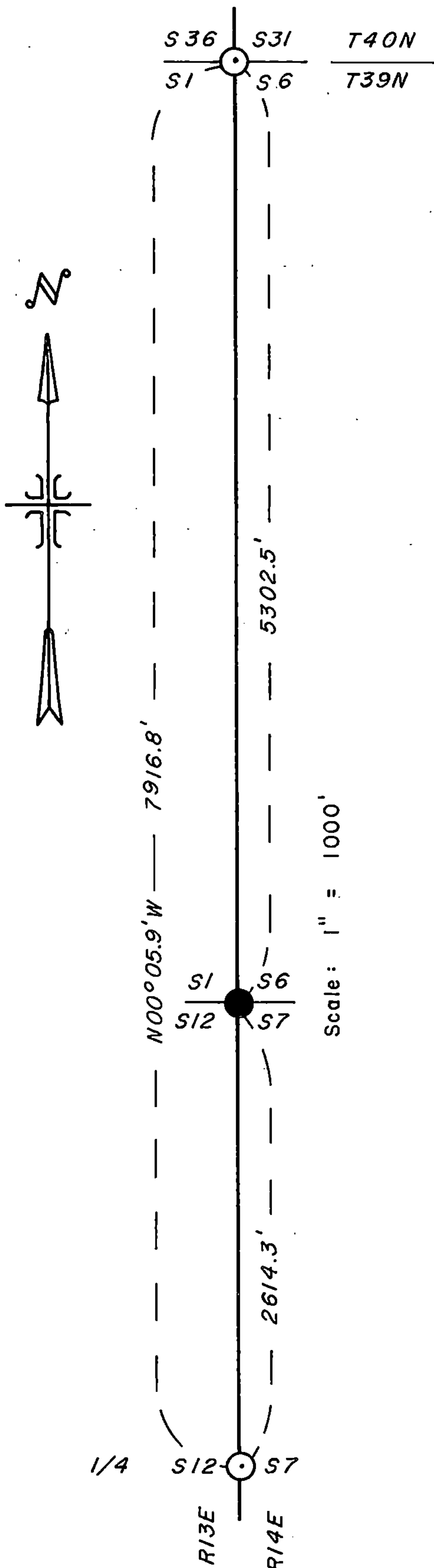


Stock No. 26273

Sheet 1 of 2 (E-1)

CERTIFIED LAND CORNER RESTORATION CERTIFICATE

BEING THE SECTION CORNER COMMON TO SECTIONS
1, 6, 7, AND 12, TOWNSHIP 39 NORTH, RANGES 13 AND 14
EAST, FOURTH PRINCIPAL MERIDIAN, COUNTY OF
FOREST, STATE OF WISCONSIN

Legend

- — 2 1/2 inch diameter aluminum pipe monument, 30 inches long with an aluminum cap stamped to identify the corner.
- — Corners monumented and recorded

Survey Notes

This survey of the line between the west quarter corner of Section 7, T39N, R14E and the northwest corner of Section 6, T39N, R14E, Fourth Principal Meridian was made by the U.S. Department of Agriculture, Forest Service.

The purpose of this survey is to restore the section corner common to Sections 1, 6, 7 and 12, T39N, Ranges 13 and 14E.

All bearings are true bearings referenced to solar observations.

DOCUMENT NO.
119750

REGISTER'S OFFICE
Forest County, Wis.

Received for record this 12th day
of May A.D., 1987 at
2:30 o'clock P.M. and recorded
in Vol. _____ of CORNER
page E-1 RESTORATION
Eugene J. Harty
Register of Deeds

43913010000

E 1

Stock No. 26273

Sheet 2 of 2 (E-1)

CORNERS RECOVERED

1. Quarter Corner between Sections 7 and 12, Ranges 13 and 14 E.
Recorded as document number 107233, June 16, 1975.
2. Section Corner Common to Sections 1,6,31 and 36, Townships 39 and 40 N, Ranges 13 and 14 E.

Recorded as document number 108556, January 14, 1976.

CORNER RESTORED

1. Section Corner Common to Sections 1,6,7 and 12, Ranges 13 and 14 E.

Restored the section corner by single proportion on line between the west quarter corner of Section 7 and the northwest section corner of Section 6.

Corner References:

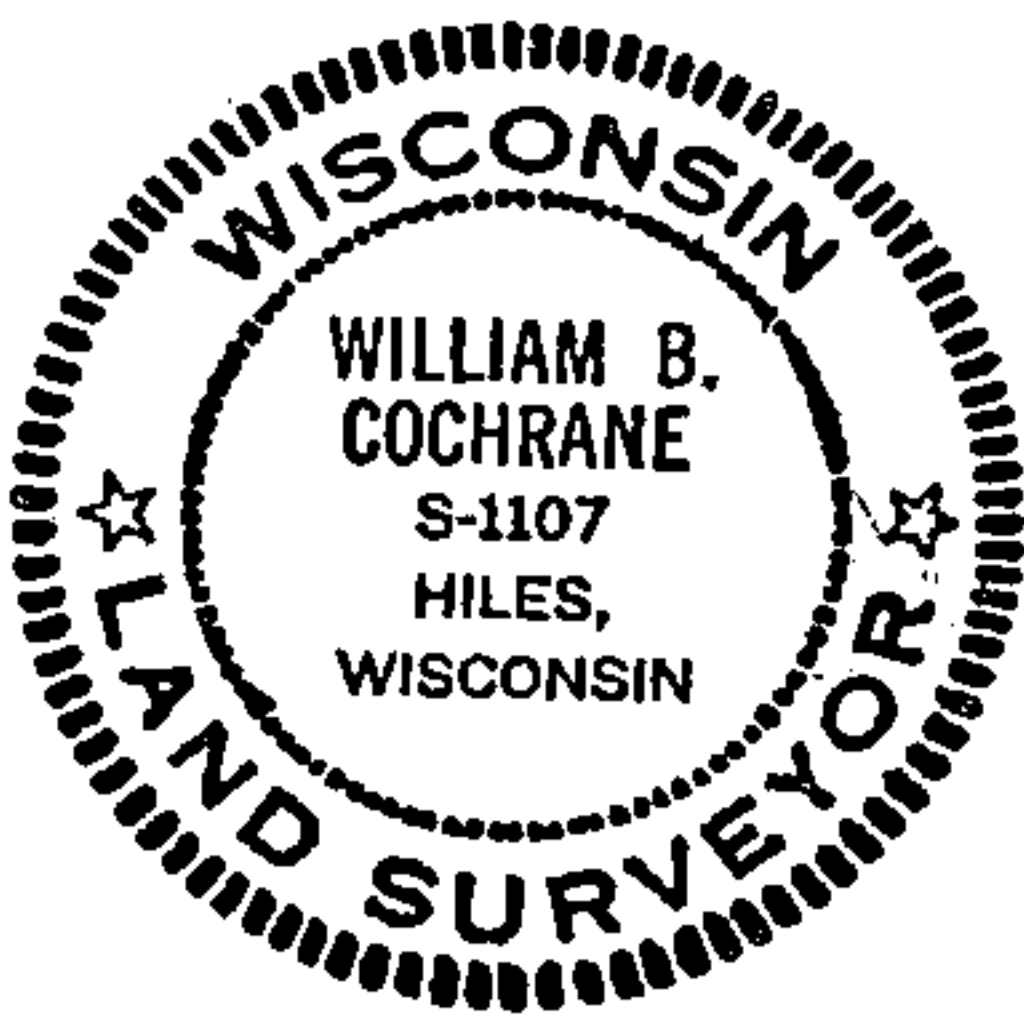
Hemlock	12"	N56°E	57.0 ft.
Hemlock	18"	S38°E	44.62 ft.
Hemlock	14"	S51°W	83.87 ft.
Basswood	8"	N53°W	36.74 ft.

SURVEYOR'S AFFIDAVIT

State of Wisconsin)
County of Forest) ss

I, William B. Cochrane, Land Surveyor, U.S. Forest Service, and a Registered Land Surveyor in the State of Wisconsin, hereby certify that I have surveyed the line between the west quarter corner of Section 7 and the northwest section corner of Section 6, Township 39 North, Range 14 East, Fourth Principal Meridian, State of Wisconsin.

The plat map and the survey notes are a correct representation of the corners recovered, and corner established.



William B. Cochrane

Land Surveyor, U.S. Forest Service
R.L.S. State of Wisconsin
Certificate S-1107

Date of Survey: 1981

U.S. PUBLIC LAND SURVEY MONUMENT RECORD

Index No. E-25

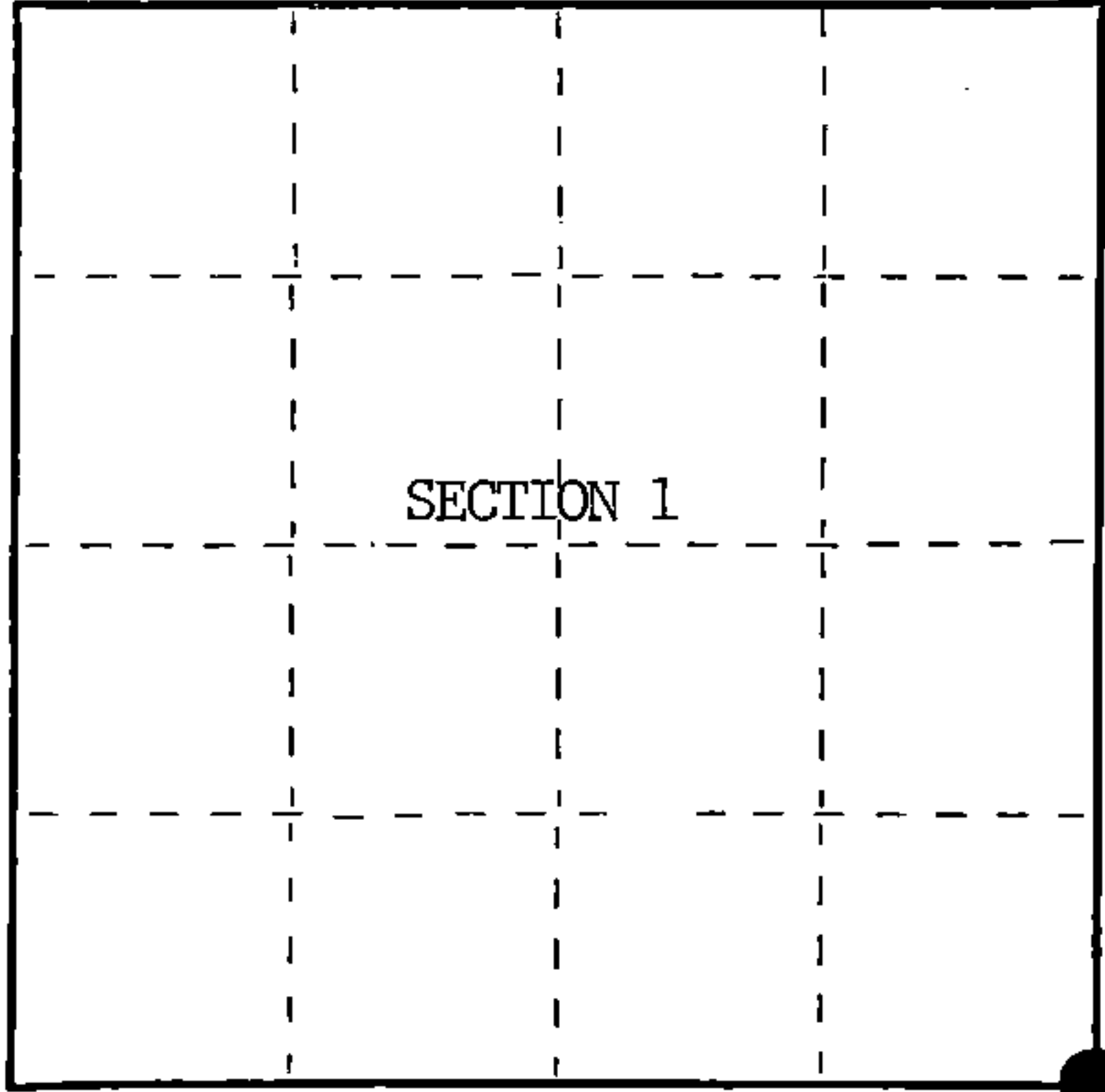
State of Wisconsin }
County of Forest } ss.

I, William B. Cochrane, do hereby
certify that on the 3rd day
of September, 1985, I found
evidence of the Southeast Section
corner of Section 1
Township 39 North, Range
13 East, Fourth Principal Meridian,
as described hereon; and that from this evidence
I established a new monument and accessories
as described hereon to perpetuate the original
location of this corner.

Resident witnesses:

David Brownell

State Plane Co-ordinates
N- 262,936.3200
E-2,305,717.2550



○ = Corner monument restored.

History of original corner establishment:

Original Government Survey in 1858 by Artemas Curtis.

Corner restored in 1981, by William B. Cochrane, a Registered
Land Surveyor with the U.S. Forest Service.

See Certified Land Corner Restoration Certificate #119754, filed
in the Registrar of Deeds Office, in the Forest County Courthouse.

Description of corner evidence found:

Found monument torn out.

Hemlock	12"	N56°E	57.00 feet
Hemlock	18"	S38°E	44.62 feet
Hemlock	14"	S51°W	83.87 feet
Basswood	8"	N53°W	36.74 feet-Cut down for Aerial Photo Project.

Description of monument and accessories I established to perpetuate the original location of this corner.

From bearing trees above, set a 2½" diameter aluminum pipe monument, 3 feet
long, 3½ feet in the ground, with an aluminum cap stamped; T39N, R13E, R14E,
S1, S6, S7, S12, 1985, S-1107.

Dated at Hiles, Wis., this 27th day of February, 1986

Signature William B. Cochrane Title Land Surveyor Registration No. s-1107
(County Surveyor, Registered Land Surveyor, or other duly authorized official)

Office of Register of Deeds, County of Forest, I hereby certify that the within
instrument was filed in this office for record on the 11th day of March, 1987
at 3:30'clock P. M.

Paul Aschenbrenner
(Register of Deeds)

By Deputy

FORM NO. 985-A
H.C. Miller Company
MILWAUKEE, WISCONSIN

Stock No. 26273

DOCUMENT NUMBER 132300

43913010000

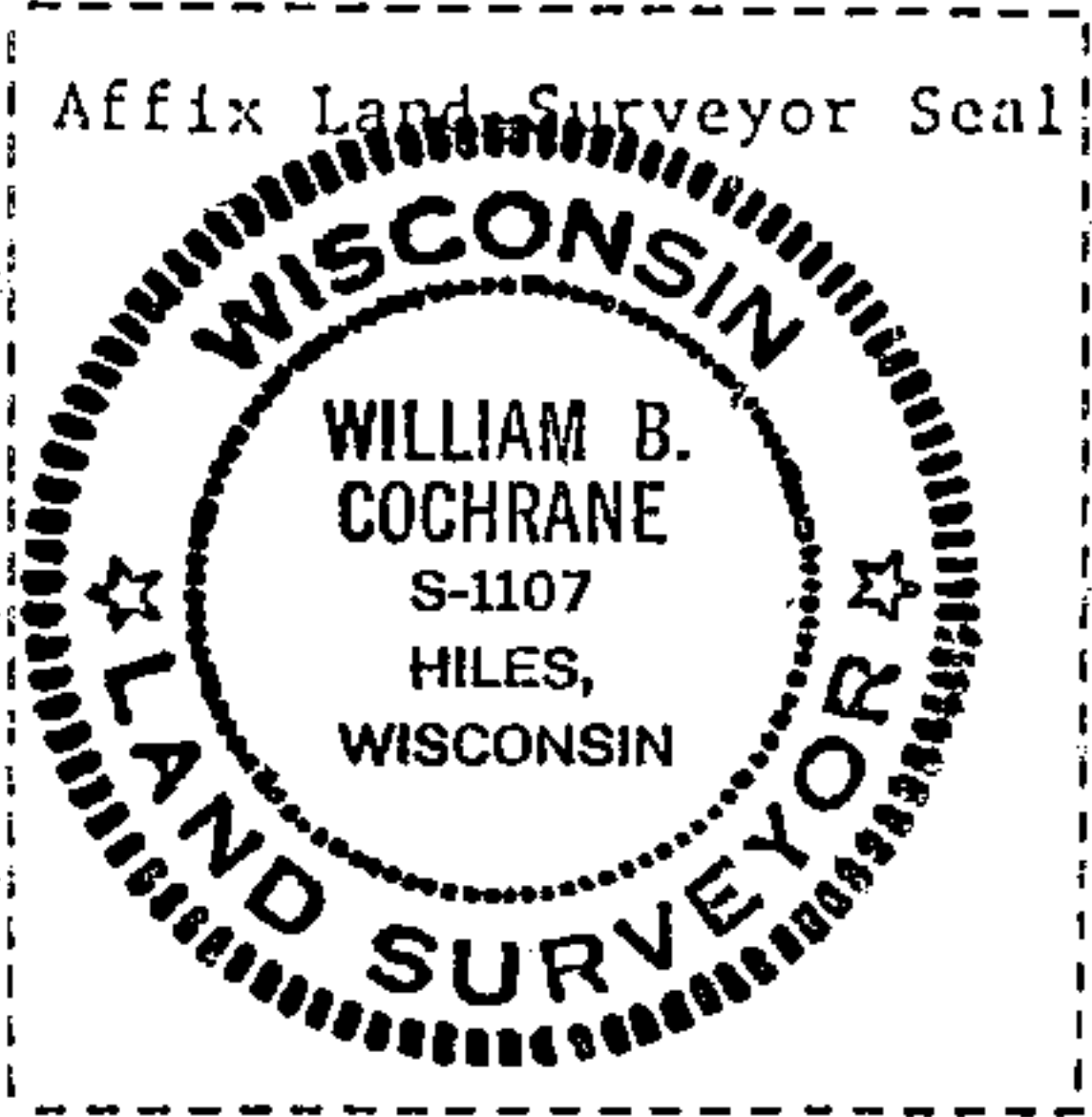
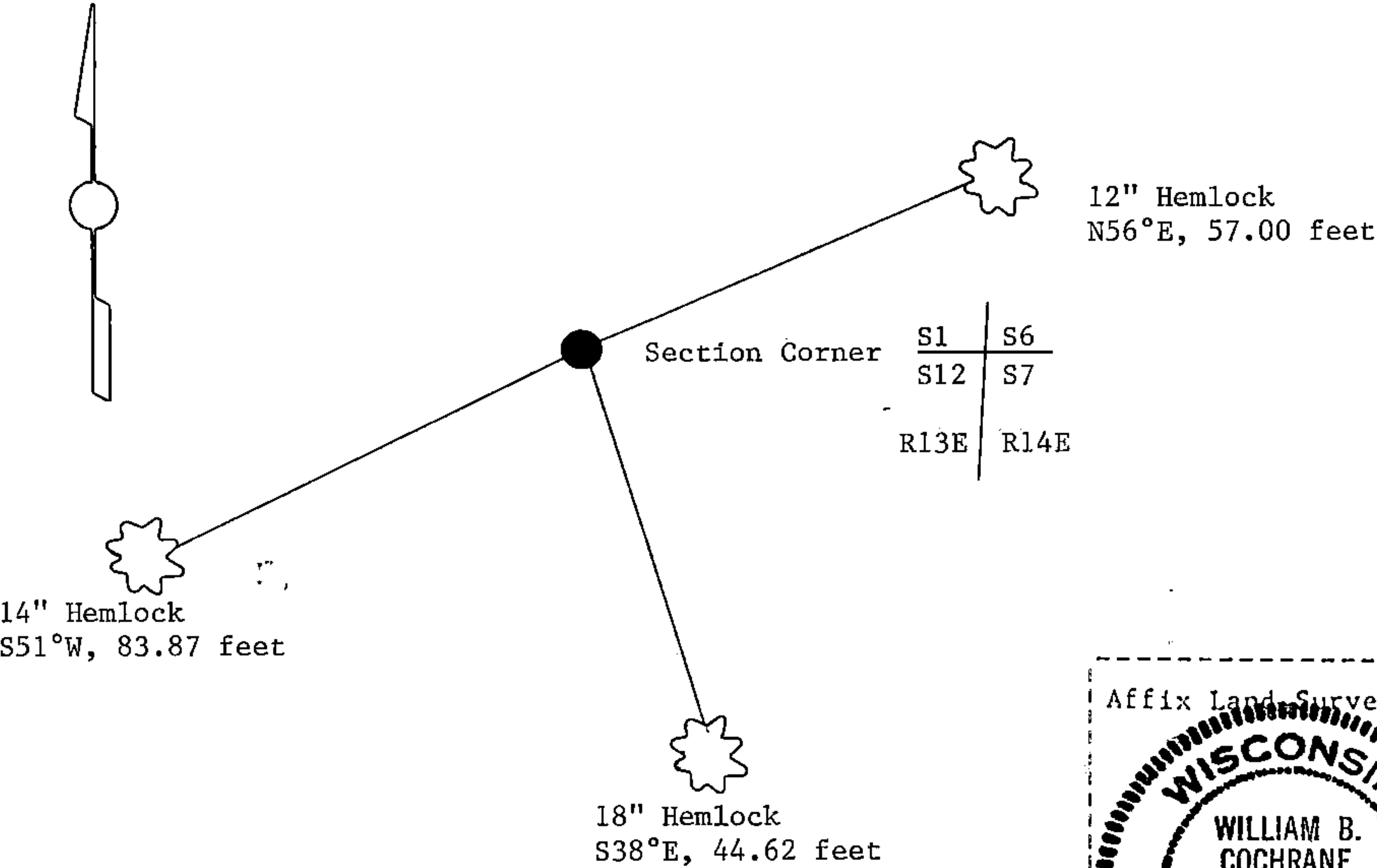
(e) Describe any material discrepancy between the location of the corner as restored or reestablished and the location of that corner as previously restored or reestablished by distance and direction. Show the discrepancy on the plan view drawing under (d), above. Show the distances between the corner as previously restored or reestablished and (1) the corner as restored or reestablished, and (2) to at least 2 of the witness monuments shown on the drawing in (d), above.

See drawing below.

(f) Was the corner restored through acceptance of (1) an obliterated evidence location, or, (2) a found perpetuated location?

Restored through acceptance of a found perpetuated location.

(g&h) Was the corner reestablished through lost corner proportionate methods? If so, show the method, including the directions and distances to other public land survey corners used as evidence or used for proportioning in determining the corner location?



(i) I, William B. Cochrane
(type or print name) certify that the corner location shown on this record was determined by me or under my direction and control and that this U.S. Public Land Survey Monument Record is correct and complete to the best of my knowledge and belief.

William B. Cochrane October 7, 1986
Signature Date

Survey requested by: [Signature] 3-9-87
District Ranger Date

U.S. PUBLIC LAND SURVEY MONUMENT RECORD

Index No. E-1

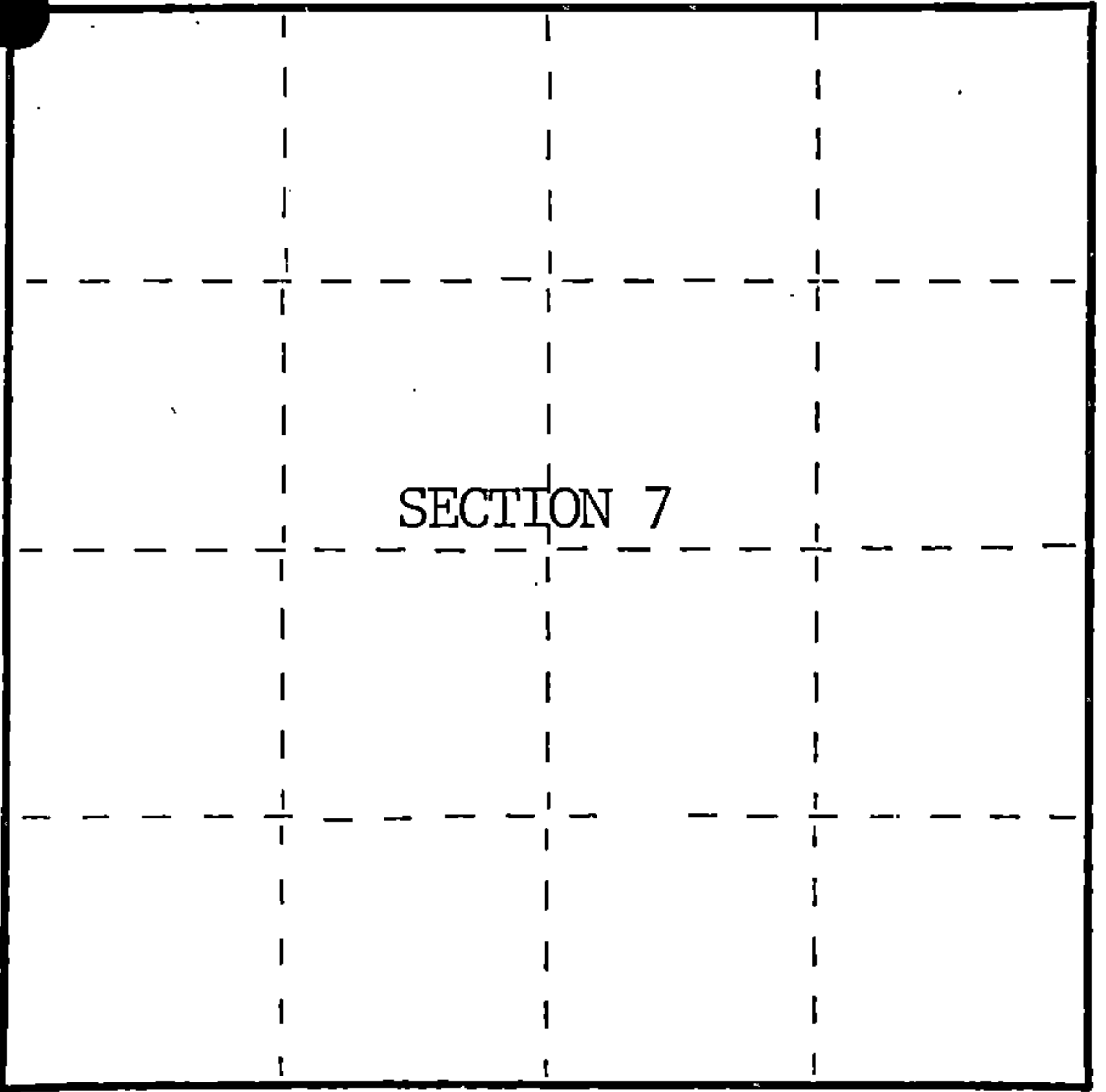
State of Wisconsin }
County of Forest } ss.

I William B. Cochrane, do hereby
certify that on the 3rd day
of September, 1985, I found
evidence of the Northwest Section
corner of Section 7
Township 39 North, Range
14 East, Fourth Principal Meridian,
as described hereon; and that from this evidence
I established a new monument and accessories
as described hereon to perpetuate the original
location of this corner.

Resident witnesses:

Tony Tillman

State Plane Co-ordinates
N- 262,936.3200
E-2,305,717.2550



○ = Corner monument restored.

History of original corner establishment:

Original Government Survey in 1858 by Artemas Curtis.

Corner restored in 1981, by William B. Cochrane, a Registered
Land Surveyor with the U.S. Forest Service.

See Certified Land Corner Restoration Certificate #119754, filed in the
Registrar of Deeds Office, in the Forest County Courthouse.

Description of corner evidence found:

Found monument torn out.

Hemlock	12"	N56°E	57.00 feet
Hemlock	18"	S38°E	44.62 feet
Hemlock	14"	S51°W	83.87 feet
Basswood	8"	N53°W	36.74 feet-Cut down for Aerial Photo Project

Description of monument and accessories I established to perpetuate the original location of this corner.

From bearing trees above, set a 2½" diameter aluminum pipe monument, 3 feet long,
3½ feet in the ground, with an aluminum cap stamped; T39N, R13E, R14E, S1, S6, S7,
S12, 1985, S-1107.

Dated at Hiles, Wis., this 27th day of February, 1986

Signature William B. Cochrane Title Land Surveyor Registration No. S-1107
(County Surveyor, Registered Land Surveyor, or other duly authorized official)

Office of Register of Deeds, County of Forest, I hereby certify that the within
instrument was filed in this office for record on the 11th day of March, 1987
at 3:30 o'clock P. M.

Paul Achenbrenner
(Register of Deeds)

By Deputy

FORM NO. 985-A
H.C. Miller Company
MILWAUKEE, WISCONSIN

Stock No. 26273

DOCUMENT NUMBER 132324

439 13010000

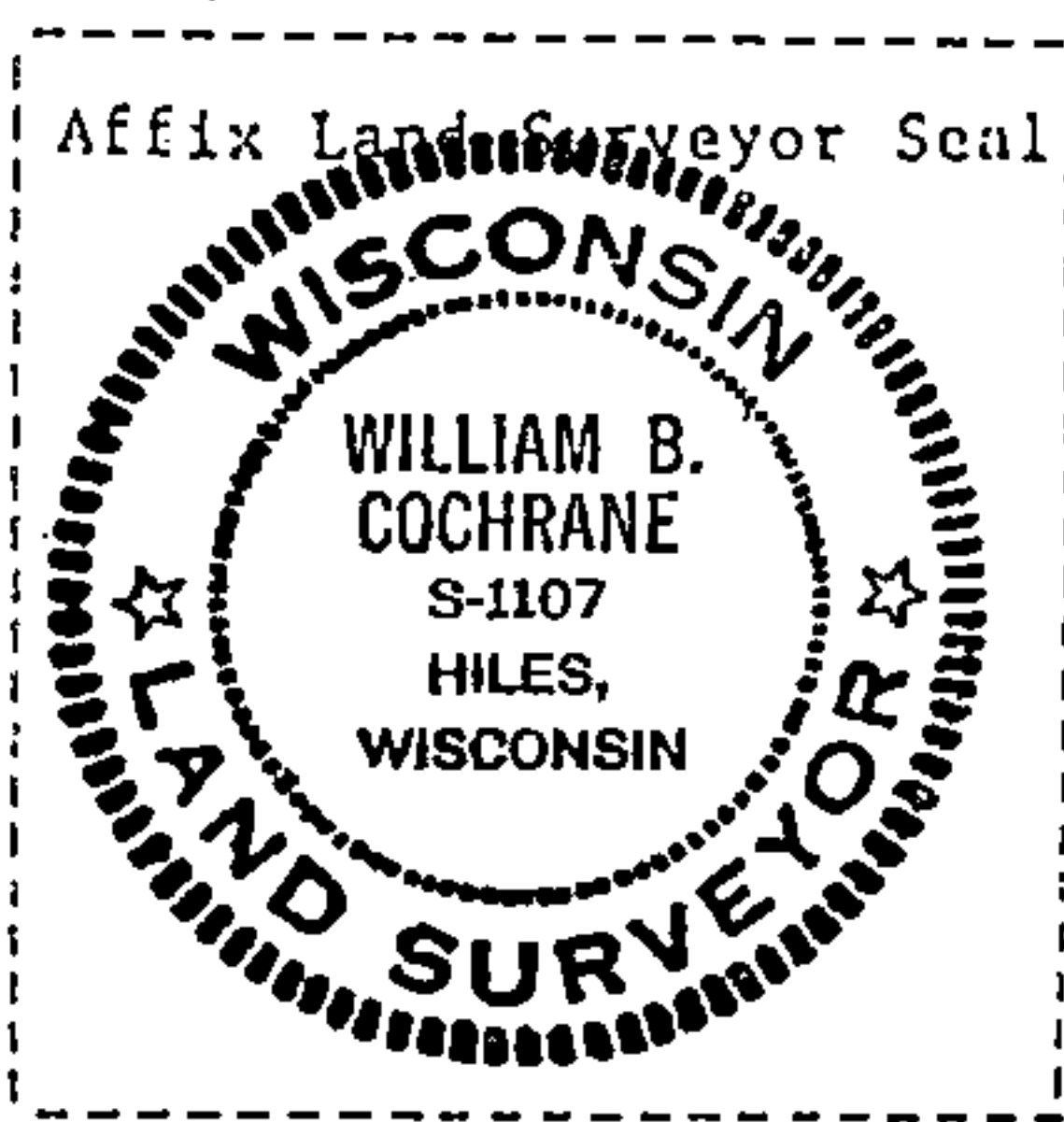
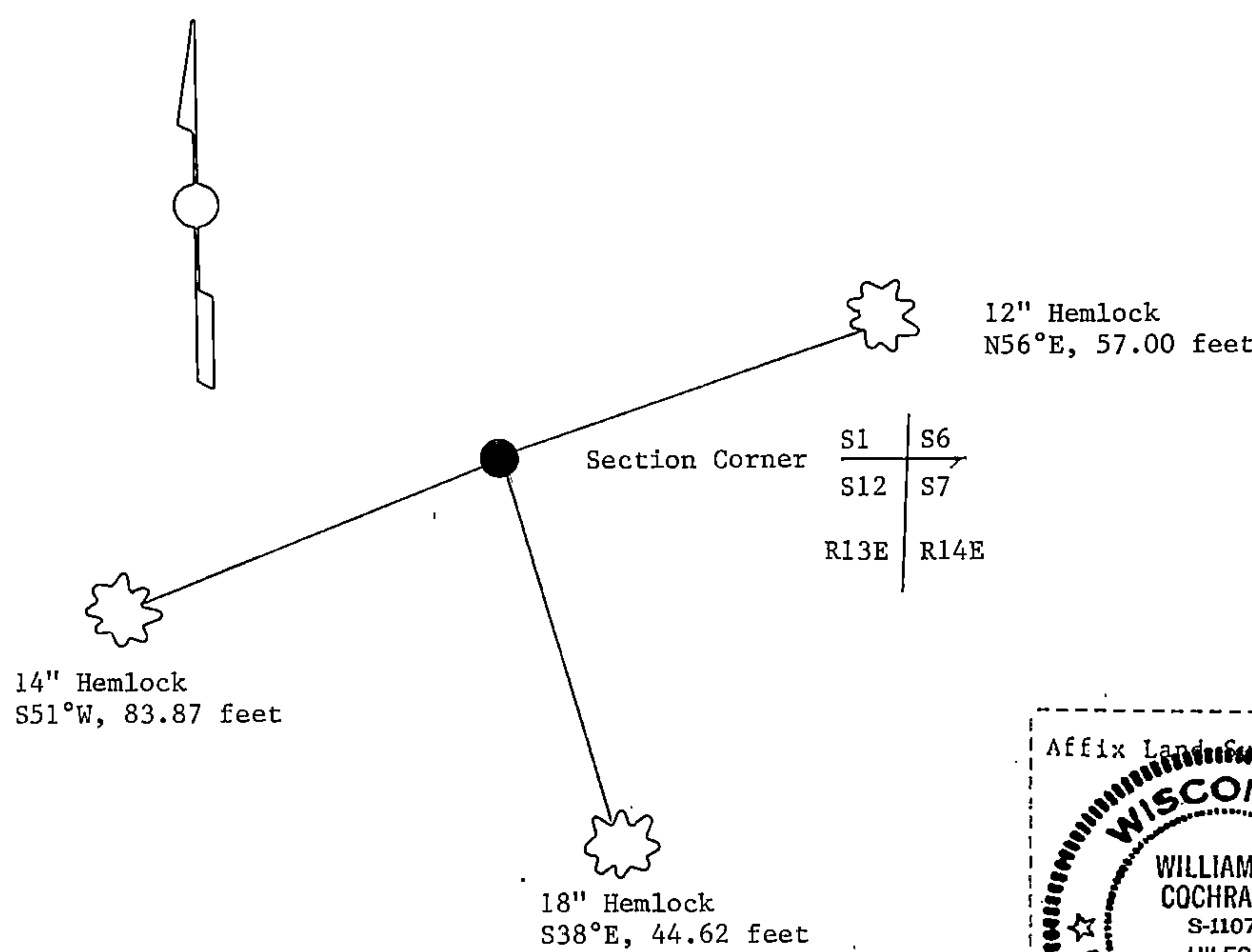
(e) Describe any material discrepancy between the location of the corner as restored or reestablished and the location of that corner as previously restored or reestablished by distance and direction. Show the discrepancy on the plan view drawing under (d), above. Show the distances between the corner as previously restored or reestablished and (1) the corner as restored or reestablished, and (2) to at least 2 of the witness monuments shown on the drawing in (d), above.

See drawing below.

(f) Was the corner restored through acceptance of (1) an obliterated evidence location, or, (2) a found perpetuated location?

Restored through acceptance of a found perpetuated location.

(g&h) Was the corner reestablished through lost corner proportionate methods? If so, show the method, including the directions and distances to other public land survey corners used as evidence or used for proportioning in determining the corner location?



(i) I, William B. Cochrane
(type or print name) certify that the corner location shown on this record was determined by me or under my direction and control and that this U.S. Public Land Survey Monument Record is correct and complete to the best of my knowledge and belief.

William B. Cochrane October 7, 1986
Signature Date

Survey requested by; Edward [Signature] 3-9-87
District Ranger Date