

# U.S. PUBLIC LAND SURVEY MONUMENT RECORD

Index No. A-11

State of Wisconsin }  
County of FOREST } ss.

I, John Schulke, do hereby certify that on the 27th day of June, 1986, I found evidence of the North Quarter corner of Section 4, Township 37, North, Range 12 East, Fourth Principal Meridian, as described hereon; and that from this evidence I established a new monument and accessories as described hereon to perpetuate the original location of this corner.

Resident witnesses:

History of original corner establishment:

Original Government Survey in 1858 by Alfred Millard,

Corner restored by single proportionate measurement in Dependent Resurvey of T38N, R12E in 1937-38 for the General Land Office or (BLM).

Corner references:

Hemlock	10"	S52°W	48 lks.
Sugar Maple	7"	N69½°W	14 lks.

Description of corner evidence found:

Found BLM monument in place, with a brass tablet marked for identification of the corner.

Corner references:

Hemlock (dead)	12"	S52°W	31.7 feet
Maple stub	12"	N69°W	9.2 feet

Description of monument and accessories I established to perpetuate the original location of this corner.

From the recovered corner monument established the following new bearing trees, which are blazed, scribed, painted and tagged.

Sugar Maple	5"	N17°W	17.24 feet
Sugar Maple	9"	N26°E	32.98 feet
Sugar Maple	13"	N89°E	23.68 feet
Sugar Maple	8"	S12°W	13.08 feet
Steel sign post set 1.0 foot Southeast.			

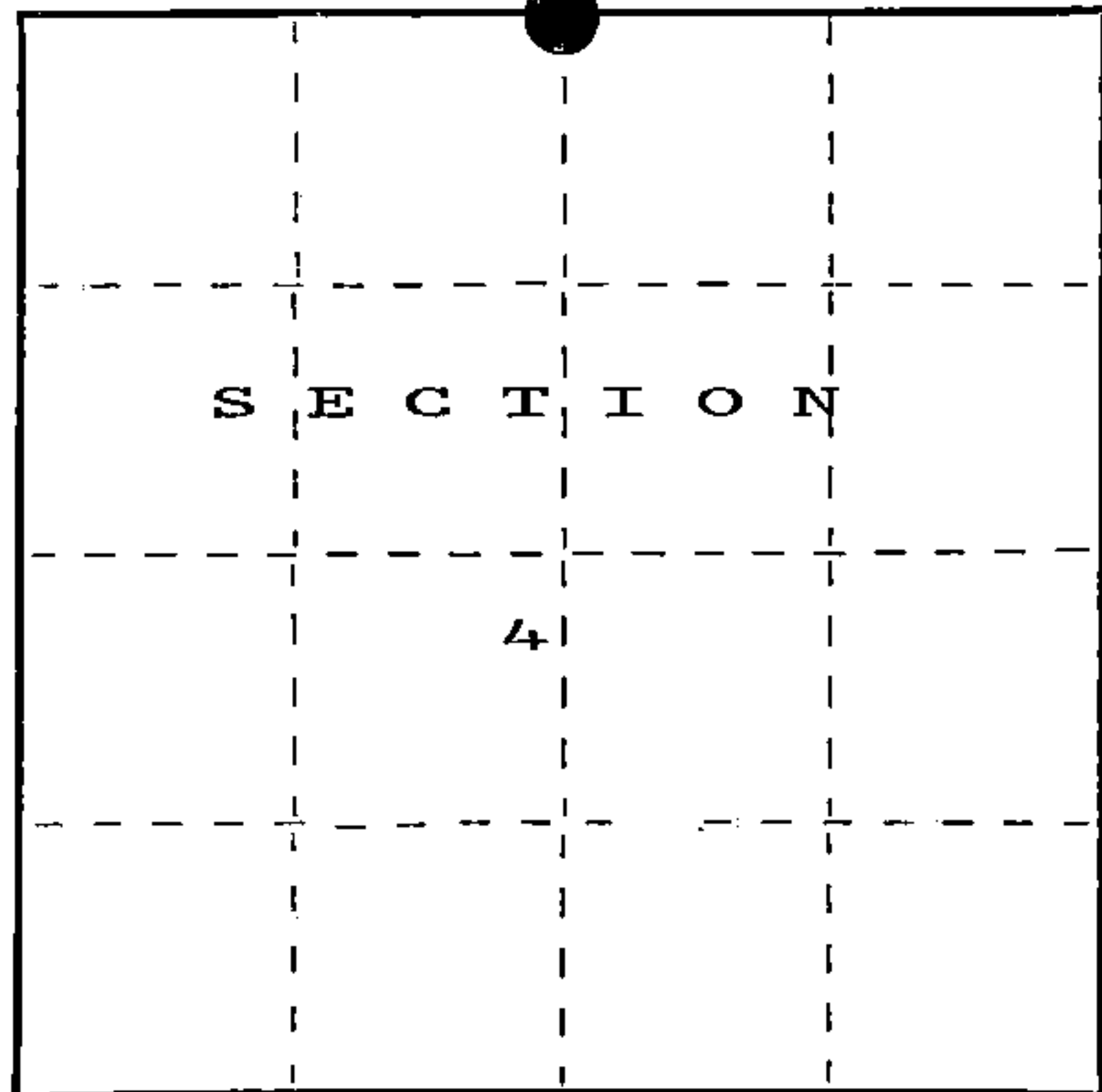
Dated at Ludington, Michigan, this fifth day of January, 1987.

Signature John C. Schulke Title Land Surveyor Registration No. S-1665  
(County Surveyor, Registered Land Surveyor, or other duly authorized official)

Office of Register of Deeds, County of Forest, I hereby certify that the within instrument was filed in this office for record on the 24th day of February, 1987 at 2:00 o'clock P. M.

Paul Aschenbrenner  
(Register of Deeds)

By Deputy



○ = Corner monument restored.

REGISTER'S OFFICE  
Forest County, Wis.

Received for record this 27th day of July, A.D., 1987 at 2:00 o'clock P.M. and recorded in Vol. CORNER RESTORATIONS page 11

Paul Aschenbrenner  
Register of Deeds

FORM NO. 985-A

H.C. Miller Company

Stock No. 26273

DOCUMENT NUMBER

132169

43812330020

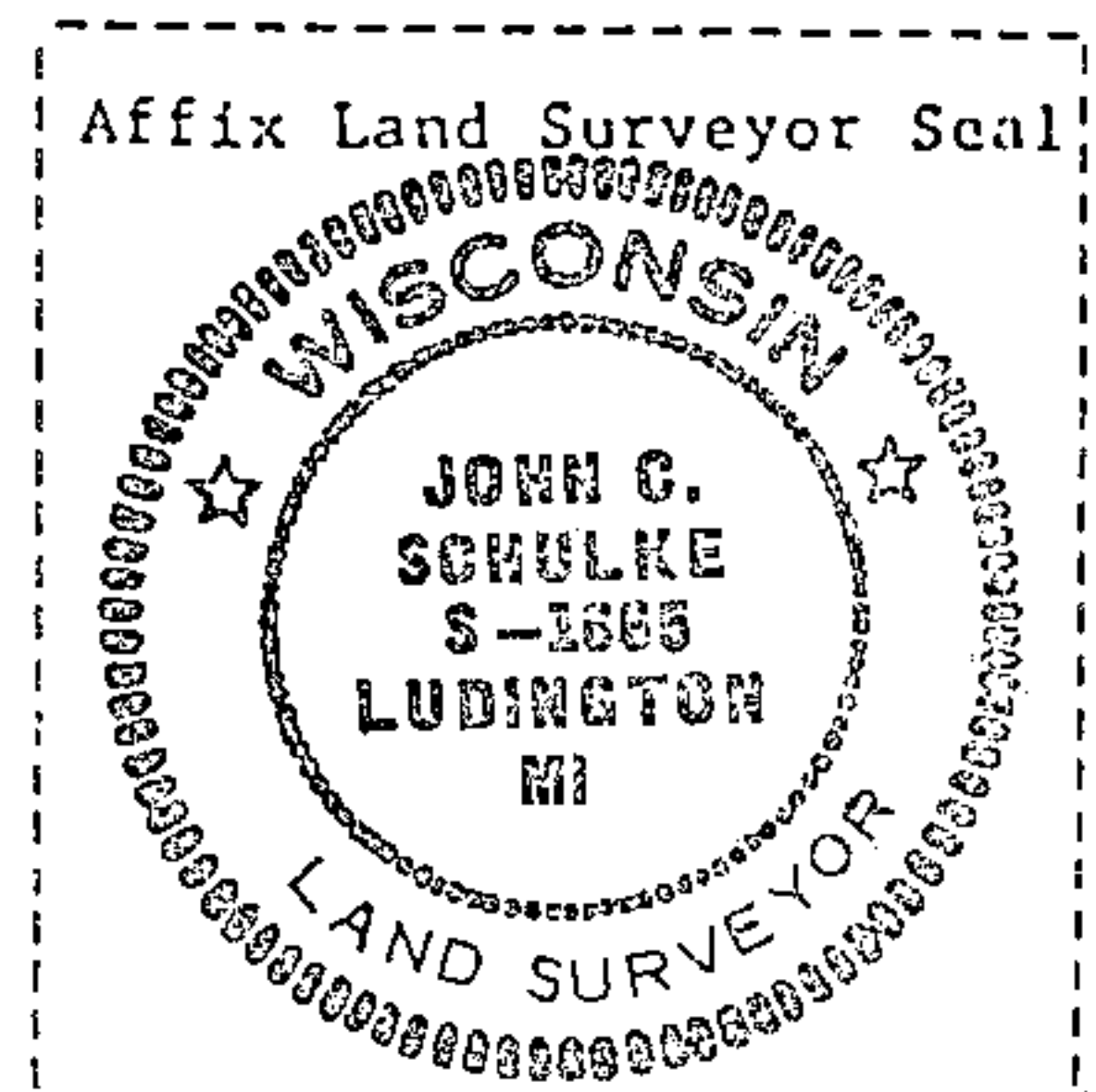
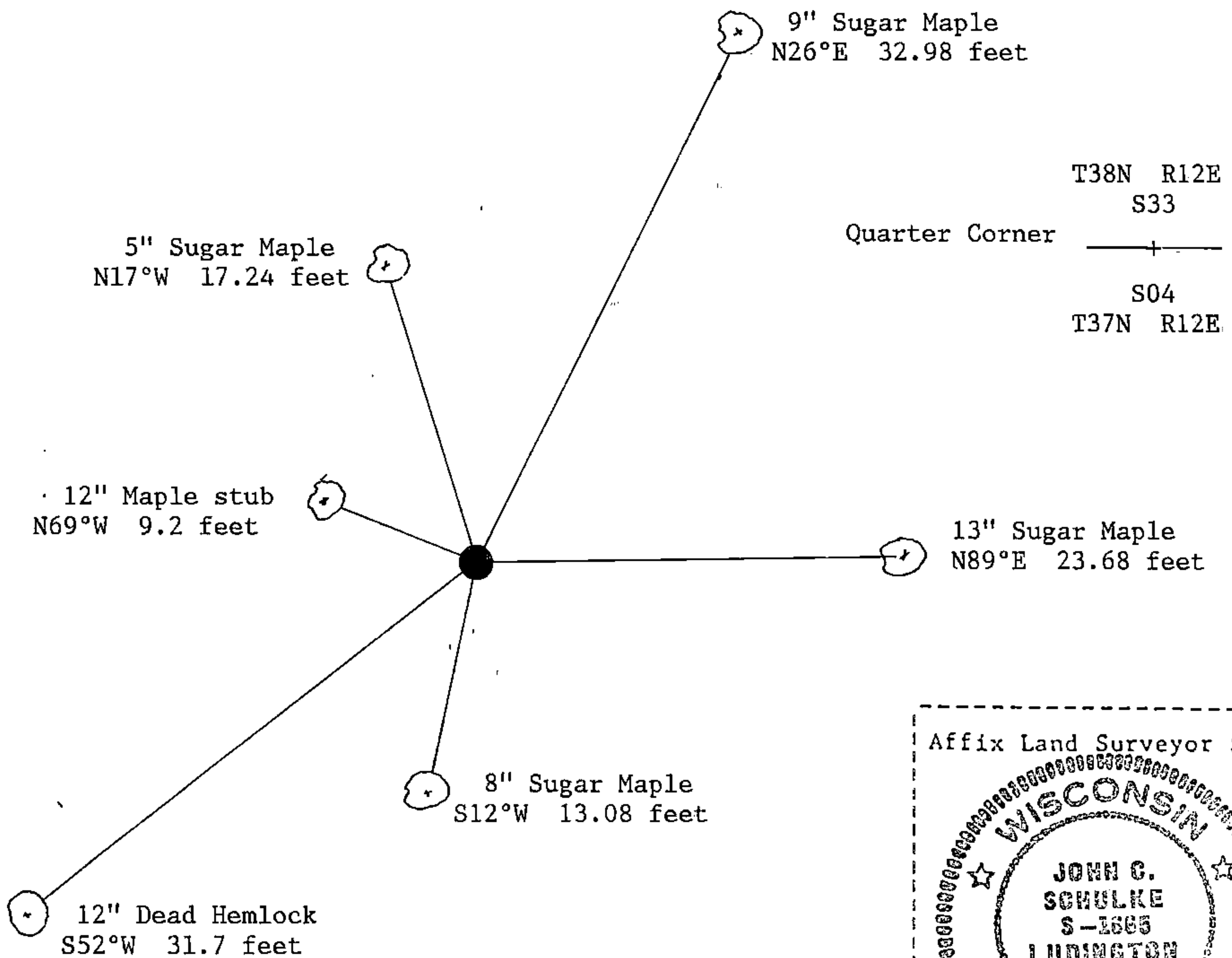
(e) Describe any material discrepancy between the location of the corner as restored or reestablished and the location of that corner as previously restored or reestablished by distance and direction. Show the discrepancy on the plan view drawing under (d), above. Show the distances between the corner as previously restored or reestablished and (1) the corner as restored or reestablished, and (2) to at least 2 of the witness monuments shown on the drawing in (d), above.

None, found corner monument.

(f) Was the corner restored through acceptance of (1) an obliterated evidence location, or, (2) a found perpetuated location?

Restores through acceptance of a found perpetuated location from BLM survey.

(g&h) Was the corner reestablished through lost corner proportionate methods? If so, show the method, including the directions and distances to other public land survey corners used as evidence or used for proportioning in determining the corner location?



(i) I, John C. Schulke  
(type or print name) certify that the corner location shown on this record was determined by me or under my direction and control and that this U.S. Public Land Survey Monument Record is correct and complete to the best of my knowledge and belief.

John C. Schulke January 5th, 1987  
Signature Date

Certificate ready for filing: Dale B. Stargel 2/24/87  
District Ranger Date