

CERTIFIED LAND CORNER RESTORATION

State of Wisconsin }
County of Forest } ss.

I Jean F. Resvick, do hereby certify that on the 15th day of May, 1975, I found evidence of the North Quarter corner of Section 5 Township 38 North, Range 12 East, Fourth Principal Meridian, as described hereon; and that from this evidence I established a new monument and accessories as described hereon to perpetuate the original location of this corner:

Description of original monument and accessories and subsequent restorations:

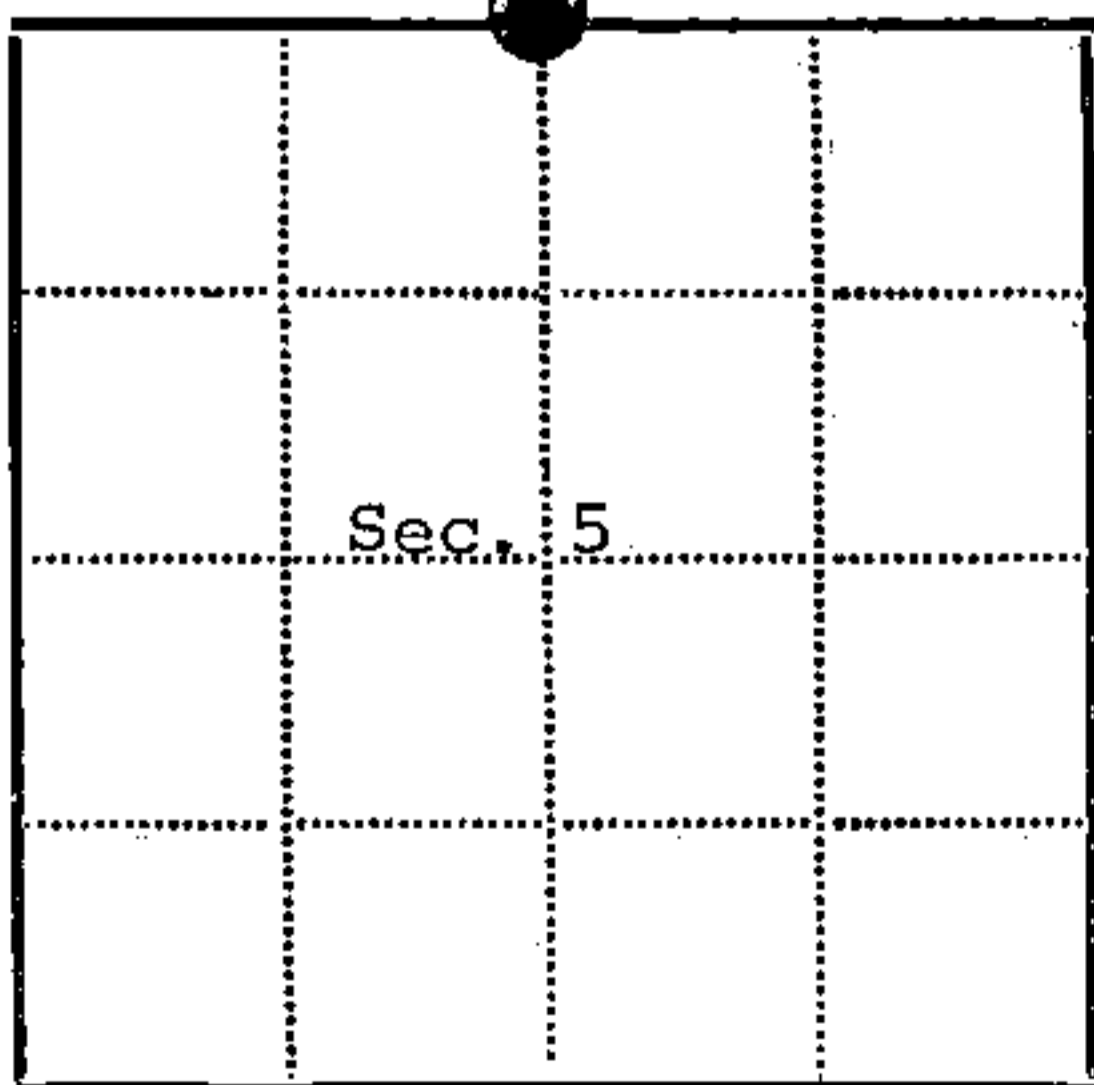
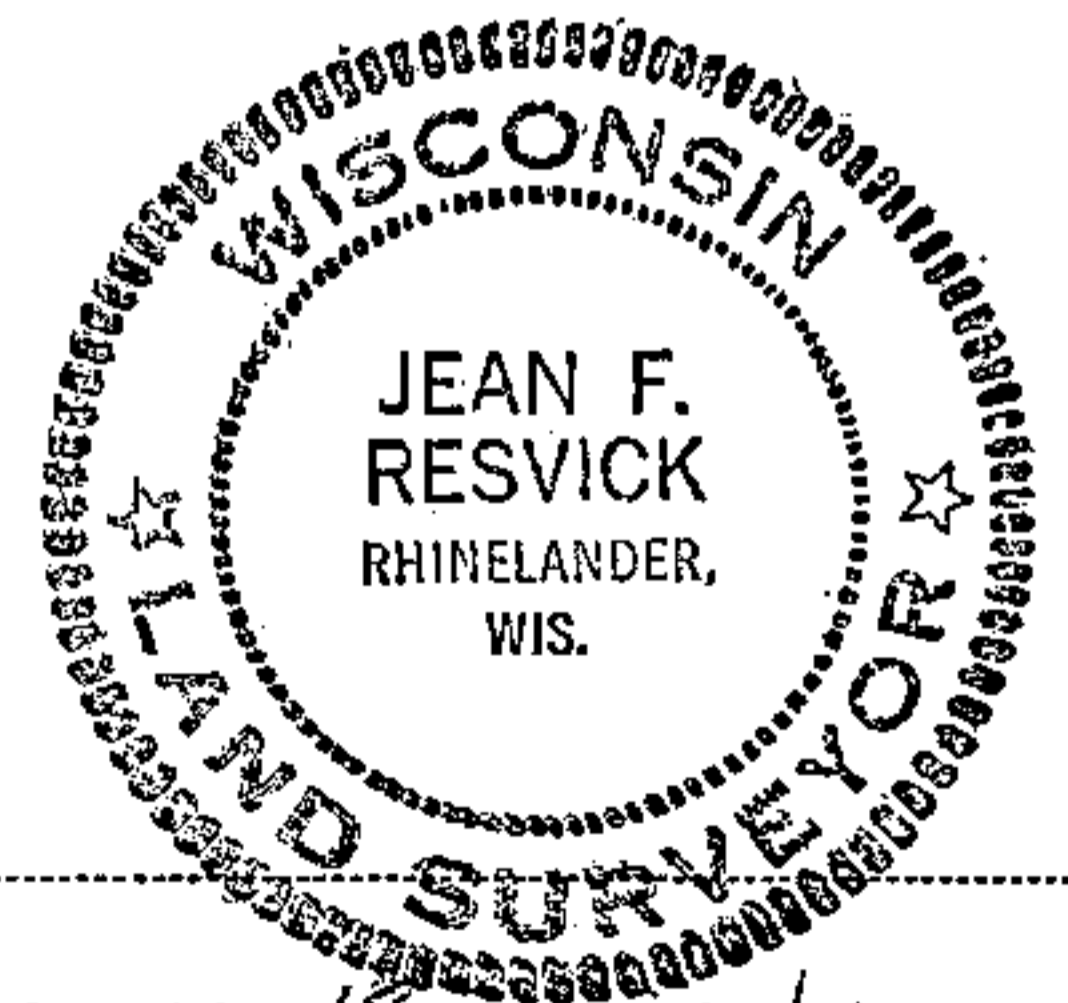
Survey in 1858 by Alfred Millard.
Dependent resurvey 1937 by Wesson Cook.
N89°51'W, 39.74 chains between Sections 5 and 32.
Proportionate distance; True point for 1/4 section corner falls in edge of Furbush Lake.
At N89°51'W, 41.49 chains between S5 and 32 set iron post, 3 feet long, 2 inches diameter, 24 inches in the ground for witness to the 1/4 section corner with brass cap marked:
WC, S32, 1/4, S5, 1937, from which: A birch, 8 inches diameter, bears N35 1/4 E, 157 lks.
A birch, 7 inches diameter, bears N46W, 103 lks.

Description of corner evidence found:

Monument described above lying on ground.
White birch stump, tree dead and down with scribing.
Set point at S46°W, 103 lks. from birch stump.
From this point N35 1/4 E, 157 lks. found white birch snag, rotted out, but has axe marks.

Description of monument and accessories I established to perpetuate the location of this corner:

Reset monument found above from bearing tree evidence.
Blaze and scribed the following new bearing trees.
Maple 6, bears N38°30'E, 107.08 feet.
W. Birch 10, bears N46°W, 74.55 feet. (Note same bearing as B.T. found)



● = Corner monument restored
□ =

Resident witnesses.....

Dated at Rhinelander Wisconsin, this 16 day of June 1975

Signature Jean F. Resvick Title Land Surveyor
(County Surveyor, Registered Land Surveyor, or other duly authorized official)

Surveyors Registration No. S-802 DOCUMENT NUMBER --- 107227

Office of Register of Deeds County of Forest

I hereby certify that the within instrument was filed in this office for record on the 16th day of June 1975, and was filed in Book No. Page No. of County Records.

Signature Eugene Stutzman Title Register of Deeds

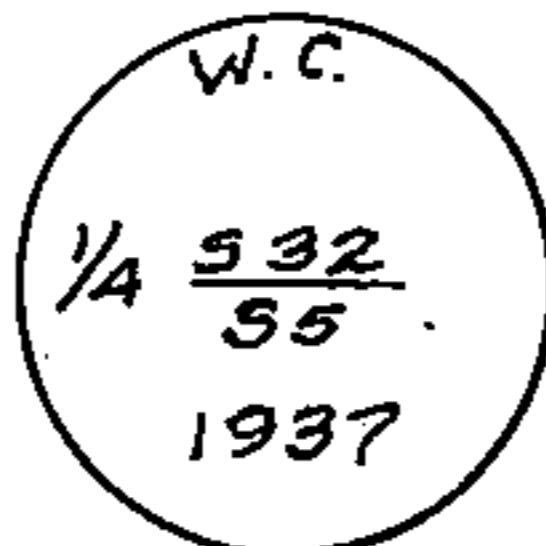
Township 38 North, Range 12 East, Section 5, Index No. A-7, Page No.

U.S. PUBLIC LAND SURVEY MONUMENT RECORD

Index No. 2-7

State of Wisconsin }
County of Forest } ss.

History of original corner establishment: Original survey by Alfred Millard in 1857. Dependent resurvey in 1937 by Wesson Cook, at 39.74 proportionate distance, no remaining evidence of the original corner, at 41.49 set an iron post 3 feet long, 2 inches diameter, 24 inches in ground for a witness to the 1/4 Section Corner, with brass cap stamped.



From which the following bear:

Birch	8"	N35-1/4°W	157 lks.
Birch	7"	N46°W	103 lks

Description of corner evidence found:

B.L.M. Monument as described above

Maple	9"	N38°30'E	107.1 feet
White Birch	12"	N46°W	74.3 feet

Description of monument and accessories I established to perpetuate the original location of this corner.

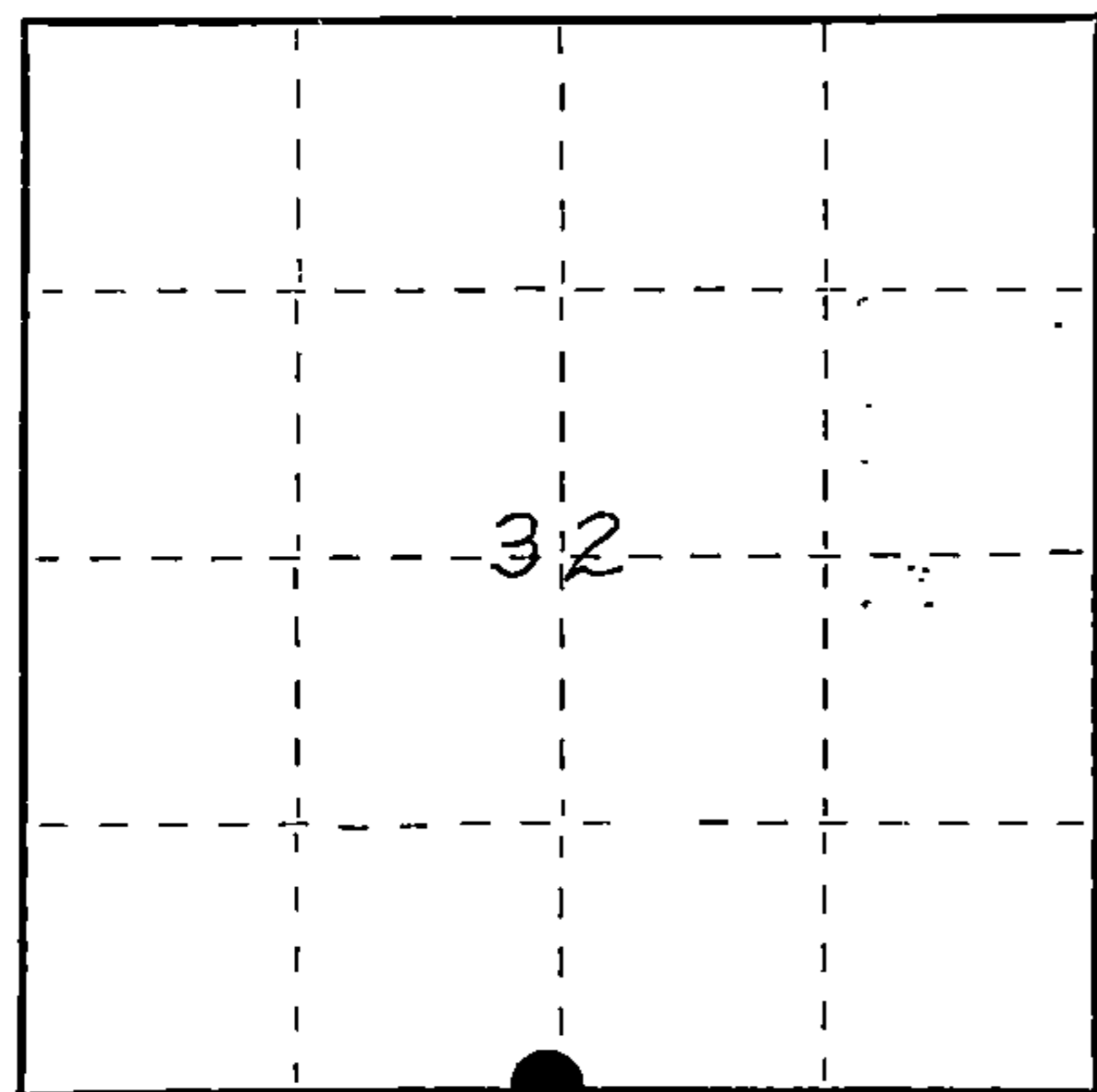
Blazed and scribed the following new bearing trees:

Maple	9"	N24°W	61.1 feet
Balsam	8"	S 3°E	107.9 feet
Set steel sign post		West	0.7 feet

I, John H. Fisher, do hereby certify that on the 29 day of January, 1985, I found evidence of the Quarter corner of Sections 5 and 32 Township 38 and 39, North, Range 12 East, Fourth Principal Meridian, as described hereon; and that from this evidence I established a new monument and accessories as described hereon to perpetuate the original location of this corner.

Resident witnesses:

None



○ = Corner monument restored.

Dated at Minocqua, Wis., this 21st day of March, 1985.

Signature: *John H. Fisher* Title Registered Land Surveyor Registration No. S-836
(County Surveyor, Registered Land Surveyor, or other duly authorized official)

Office of Register of Deeds, County of Forest, I hereby certify that the within instrument was filed in this office for record on the 24th day of July, 1985 at 1:10 o'clock P. M.

Paul Aschenbrenner
(Register of Deeds)

By _____ Deputy

FORM NO. 985-A
H.C. Miller Company

Stock No. 26273
DOCUMENT NUMBER 128456

43912320020

SEE ALSO A-7 TPO/RIZE

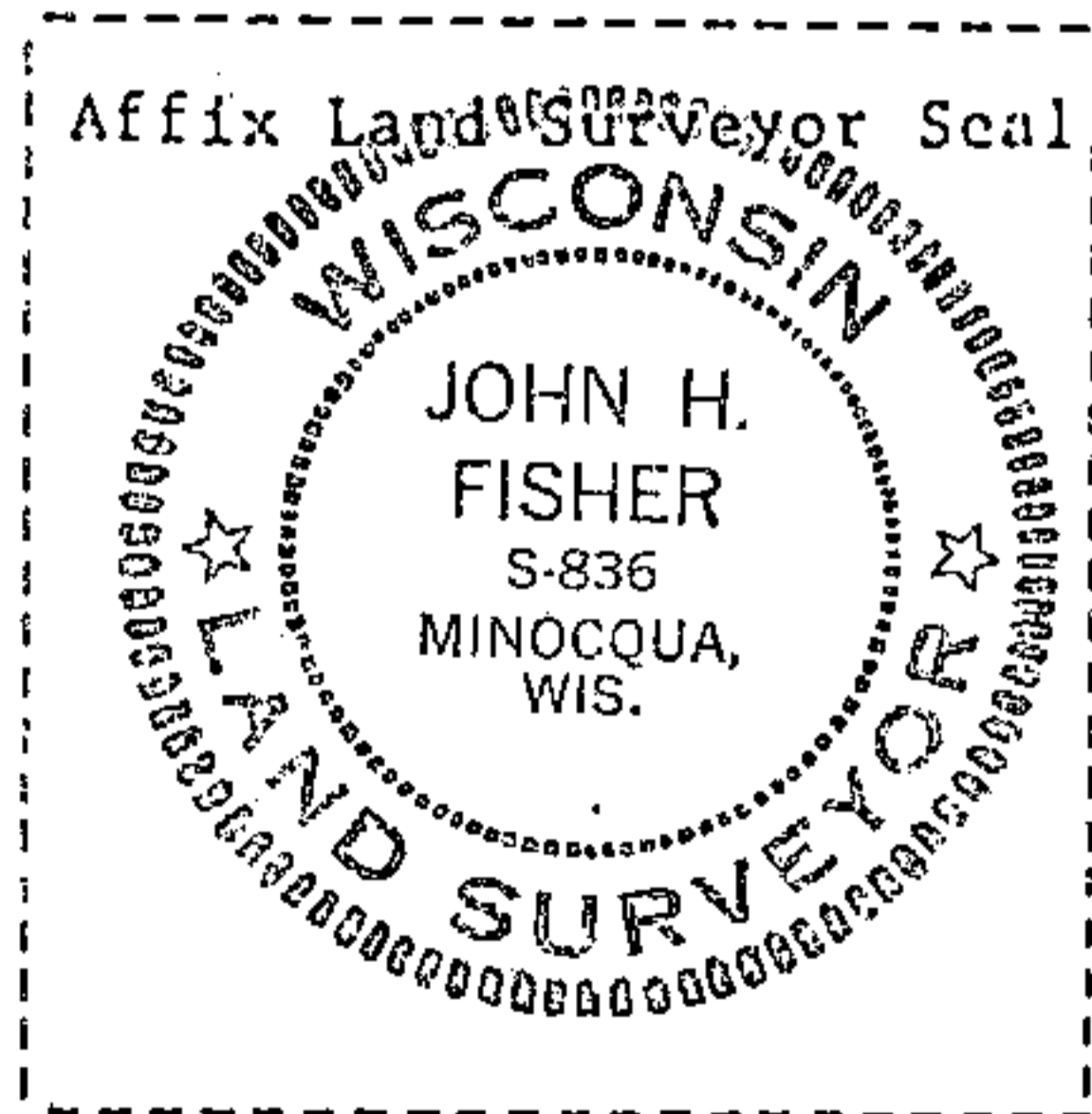
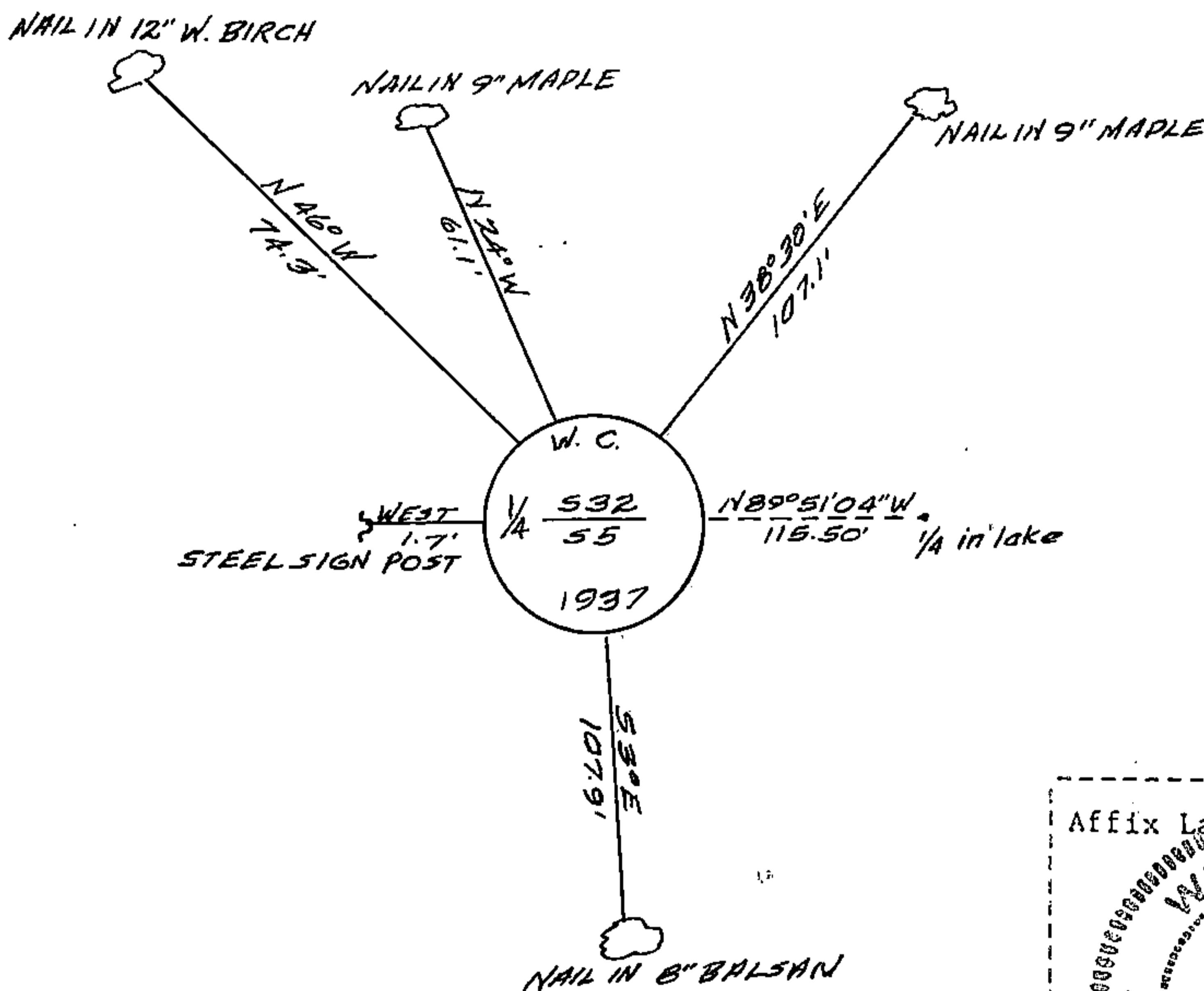
(e) Describe any material discrepancy between the location of the corner as restored or reestablished and the location of that corner as previously restored or reestablished by distance and direction. Show the discrepancy on the plan view drawing under (d), above. Show the distances between the corner as previously restored or reestablished and (1) the corner as restored or reestablished, and (2) to at least 2 of the witness monuments shown on the drawing in (d), above.

See drawing below

(f) Was the corner restored through acceptance of (1) an obliterated evidence location, or, (2) a found perpetuated location?

Found perpetuated location

(g&h) Was the corner reestablished through lost corner proportionate methods? If so, show the method, including the directions and distances to other public land survey corners used as evidence or used for proportioning in determining the corner location?



(i) I, John H. Fisher
 (type or print name) certify that the corner location shown on this record was determined by me or under my direction and control and that this U.S. Public Land Survey Monument Record is correct and complete to the best of my knowledge and belief.

John H. Fisher
 Signature

3/21/85
 Date