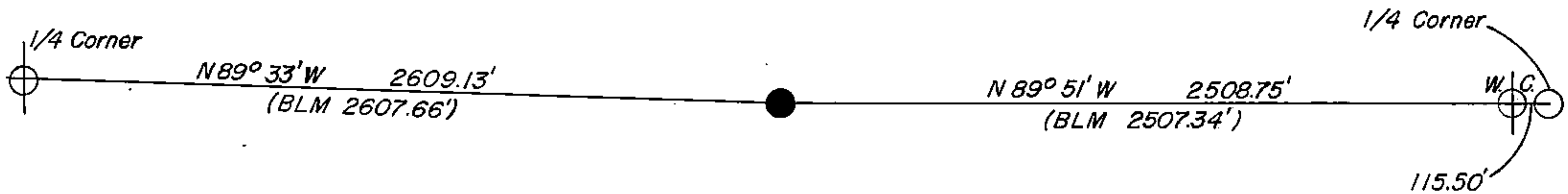


CERTIFIED LAND CORNER RESTORATION

BEING THE NORTHEAST CORNER OF SECTION 6,  
TOWNSHIP 38 NORTH, RANGE 12 EAST, FOURTH  
PRINCIPAL MERIDIAN, COUNTY OF FOREST,  
STATE OF WISCONSIN



LEGEND

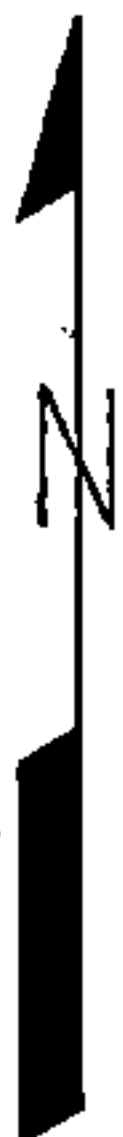
● 2 inch inside diameter, galvanized iron pipe, 3 feet long, filled with concrete, with brass cap stamped to identify corner.

⊕ Monuments recovered in place

○ Unmarked point in Furbush Lake

W.C. Witness to Quarter Corner

Scale: 1 inch = 660 feet



Survey Notes

The section corner common to sections 5 and 6, T38N, R12E and section 31 and 32, T39N, R12E, was restored by the U.S. Department of Agriculture, Forest Service.

The purpose of this survey was to restore the section corner which had been obliterated or destroyed during ski hill construction.

The section corner was established by proportional measurement between quarter corners by dependent resurvey notes done in 1937 by Wesson Cook.

Bearings shown are based on dependent resurvey bearings.

Corners Recovered

1. North quarter corner to Section 6, T38N, R12E  
Recorded as document 94347, dated March 29, 1968.
2. Witness corner to North quarter corner of Section 5, T38N, R12E  
Recorded as document 107227, dated June 16, 1975.

Corners Established

1. Section corner common to Sections 5 and 6, T38N, R12E and Sections 31 and 32, T39N, R12E.  
Established section corner at proportional distance and bearing between quarter corners.

REGISTER'S OFFICE }  
Forest County, Wis. }

Received for record this 9<sup>th</sup> day of June

A. D., 19 80 at 10:00 o'clock A M. and recorded in Vol. \_\_\_\_\_ of CORNER RESTORATION

page A-5.

EUGENE STATEZNY Sharon Mueller, Deputy

Register of Deeds

T38N R12E

A-5 51

DOCUMENT NO.  
**118064**

43912310000

New Corner References

Sugar 25, S87E, 92.15 Feet  
Sugar 26, S52W, 56.23 Feet

SURVEYOR'S AFFIDAVIT

State of Wisconsin)  
County of Forest ) ss

I, Jean F. Resvick, Land Surveyor, U.S. Forest Service, and a registered Land Surveyor in the State of Wisconsin, hereby certify that I have surveyed a part of the North township line of Township 38 North, Range 12 East, Fourth Principal Meridian.

The plat map and the survey notes are a correct representation of the corners recovered and the corner restored.



*Jean F. Resvick*  
\_\_\_\_\_  
Land Surveyor, U.S. Forest Service  
R.L.S. State of Wisconsin  
Certificate S-802

Date of Survey: 1979

U.S. PUBLIC LAND SURVEY MONUMENT RECORD

Index No. 2-5

State of Wisconsin }  
 County of Forest } ss.

I, John H. Fisher, do hereby certify that on the 28 day of January, 1985, I found evidence of the Southwest corner of Section 32 Township 38 and 39, North, Range 12 East, Fourth Principal Meridian, as described hereon; and that from this evidence I established a new monument and accessories as described hereon to perpetuate the original location of this corner.

History of original corner establishment: Original survey by Alfred Millard in 1857. Dependent resurvey in 1937 by Wesson Cook, at 79.48 the corner of Sections 5,6,31 and 32, which is marked by a Hemlock post, 4 x 4 30 inch above ground, appropriately scribed: Set a concrete monument 24 inches long, 6 inch diameter, 22 inches in the ground with brass tablet 3-1/2 inch diameter embedded in top stamped:

T39N R12E  
 31 32  
 6 5  
 T38N  
 1937

From which the following bear

Original:  
 Maple 20" N80°W 15 lks  
 Maple Stump N18°E 80 lks  
 Maple Stump Hole N75°E 18 lks  
 Hemlock Stump Hole S45°W 49 lks

New Bearing Trees:

Maple 15"	N35-1/4°E	149 lks
Maple 9"	S47°E	32 lks
Maple 12"	S49-3/4°W	57 lks
Maple 14"	N61°W	40 lks

Description of corner evidence found:

2" diameter galvanized iron pipe with brass tablet stamped. Corner was restored by Jean L. Resvick in 1979.

Resident witnesses:

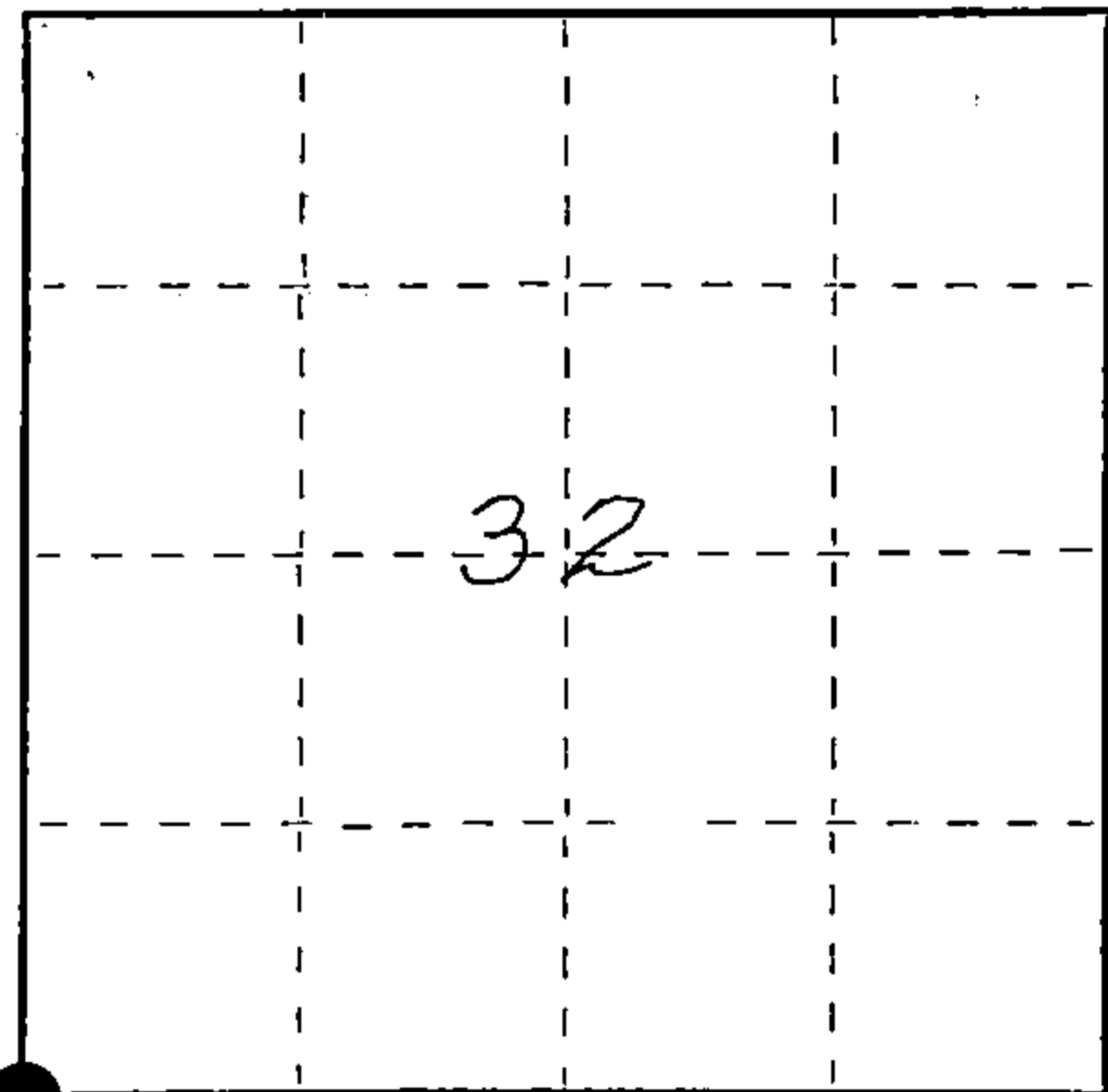
None

T39N R12E  
 31 32  
 6 5  
 T38N  
 1979  
 5802

Description of monument and accessories I established to perpetuate the original location of this corner.

Blazed and scribed the following new bearing trees

Sugar Maple 16"	N68°W	132.5 feet
Spruce 14"	N69°E	125.7 feet



Dated at Minocqua, Wis., this 21st day of March, 1985

Signature John H. Fisher Title Registered Land Surveyor Registration No. S-836  
 (County Surveyor, Registered Land Surveyor, or other duly authorized official)

Office of Register of Deeds, County of Forest, I hereby certify that the within instrument was filed in this office for record on the 24th day of July, 1985 at 1:10 o'clock P. M.

Paul Aschenbrenner  
 (Register of Deeds)

By \_\_\_\_\_ Deputy

○ = Corner monument restored.

FORM NO. 985-A

H.C. Miller Company

Stock No. 26273

DOCUMENT NUMBER 128455

43912310000

SEE ALSO A-5 T38N R12E

