

U.S. PUBLIC LAND SURVEY MONUMENT RECORD

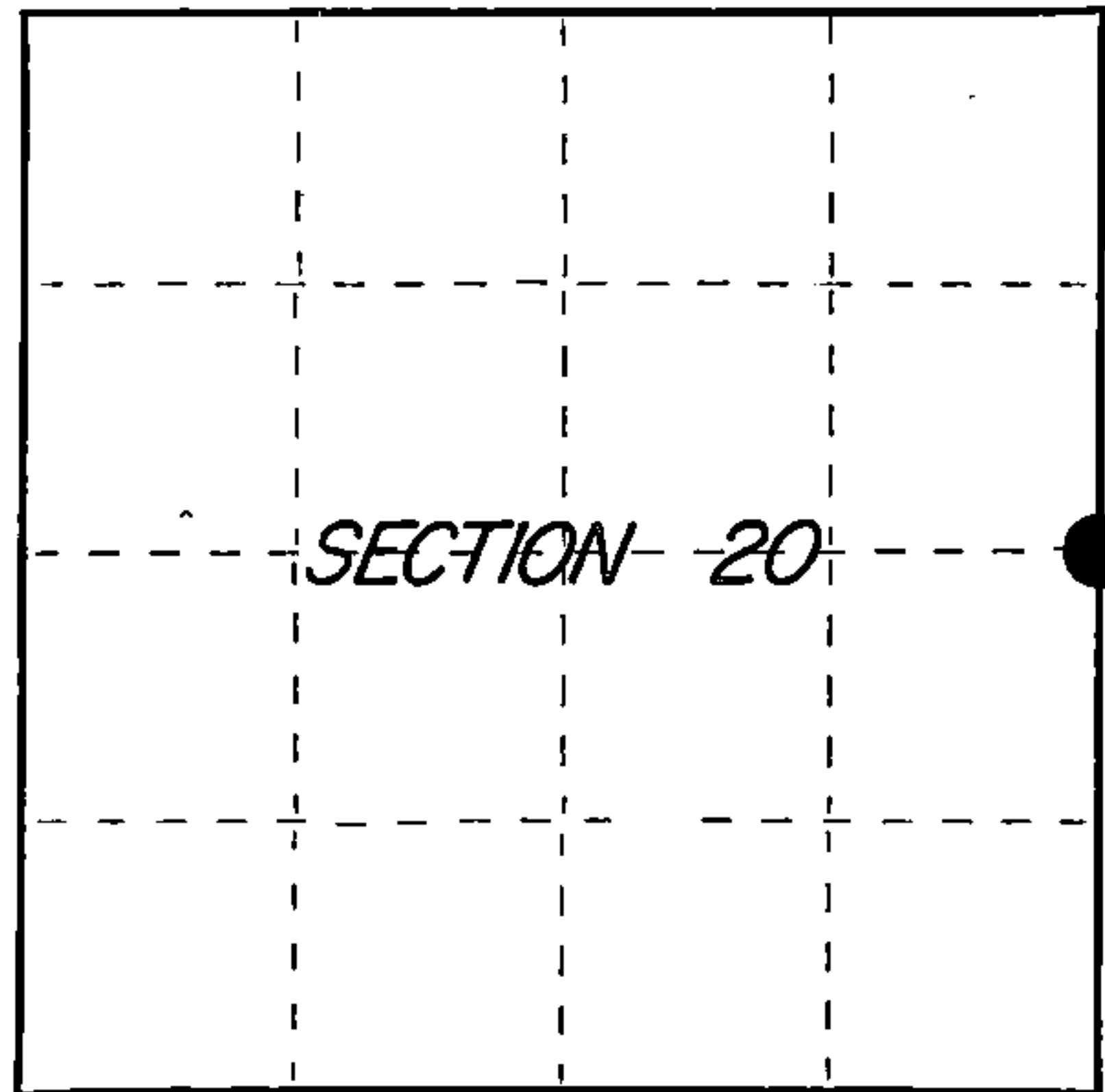
Index No. P-9

State of Wisconsin }
Columbia } ss.
County of.....

I, JAMES R. GROTHMAN, do hereby certify that on the 7th day of October, 1986, I found evidence of the One Quarter corner of Sections 20 and 21 Township 39 North, Range 12 East, Fourth Principal Meridian, as described hereon; and that from this evidence I established a new monument and accessories as described hereon to perpetuate the original location of this corner.

Resident witnesses:

.....
.....
.....



○ = Corner monument restored.

History of original corner establishment: Original survey in 1859 by William E. Daugherty. Dependent resurvey in 1941 by Hal D. Craig and Oscar B. Walsh. Set an iron post 3 feet long, 2 inches diameter, 27 inches in the ground with brass cap marked:

1/4	From which the following bear:		
S20 S21	Tamarack 7"	N44-1/2°E	9-1/2 lks.
1941	Yellow Birch 6"	N33°W	36 lks.
	Cedar Post 4" sq.	alongside monument	

Description of corner evidence found:

G.L.O. Monument as described lying down and the following bearing trees:

Yellow Birch 12"	N33°W	23.76 feet
Decayed Tamarack Stump	N44-1/2°E	6.27 feet

Description of monument and accessories I established to perpetuate the original location of this corner.

Replaced monument in proper location from found bearing trees. Blazed, scribed, painted and posted the following new bearing trees:

Cedar 10"	N88°E	19.55 feet
Cedar 8"	S10°E	36.12 feet
Cedar 9"	S73°W	26.90 feet
Steel Sign Post	North	1.00 foot

Dated at PORTAGE, Wis., this 30 day of OCTOBER, 19 86

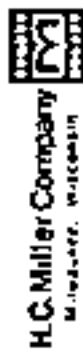
Signature James R. Grothman Title PLS Registration No. 1321
(County Surveyor, Registered Land Surveyor, or other duly authorized official)

Office of Register of Deeds, County of Forest, I hereby certify that the within instrument was filed in this office for record on the 24th day of February, 19 87 at 2:00 o'clock P. M.

Paul Aschenbrenner
(Register of Deeds)

By.....Deputy

FORM NO. 985-A



Stock No. 26273

FOREST COUNTY

DOCUMENT NUMBER
132161

REGISTER'S OFFICE
Forest County, Wis.
Received for record this 24th day
of February A.D., 19 87 at
2:00 o'clock P. M. and recorded
in Vol. CORNER RESTORATIONS
page P. 9
Paul Aschenbrenner
Register of Deeds

43912-202000

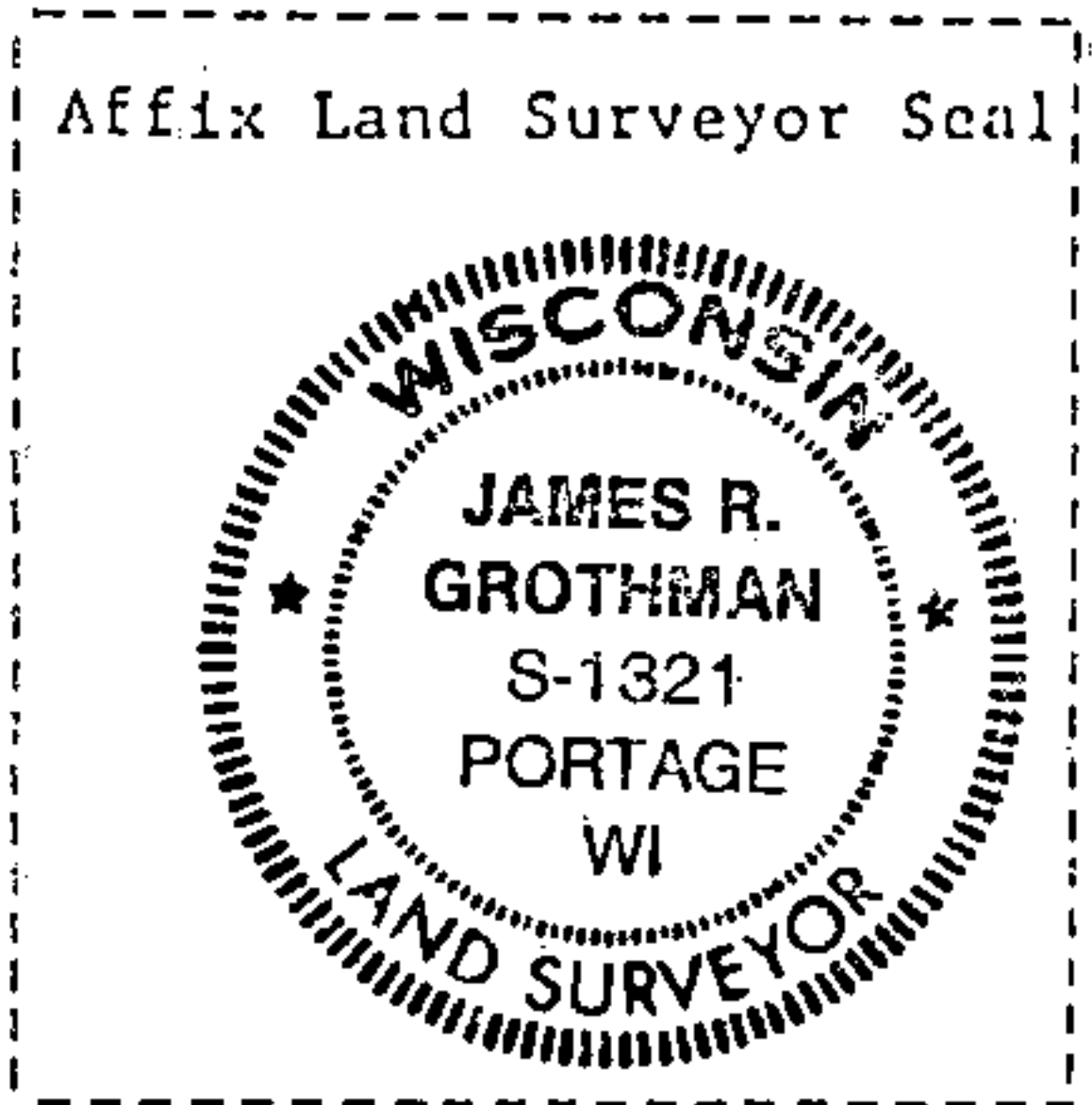
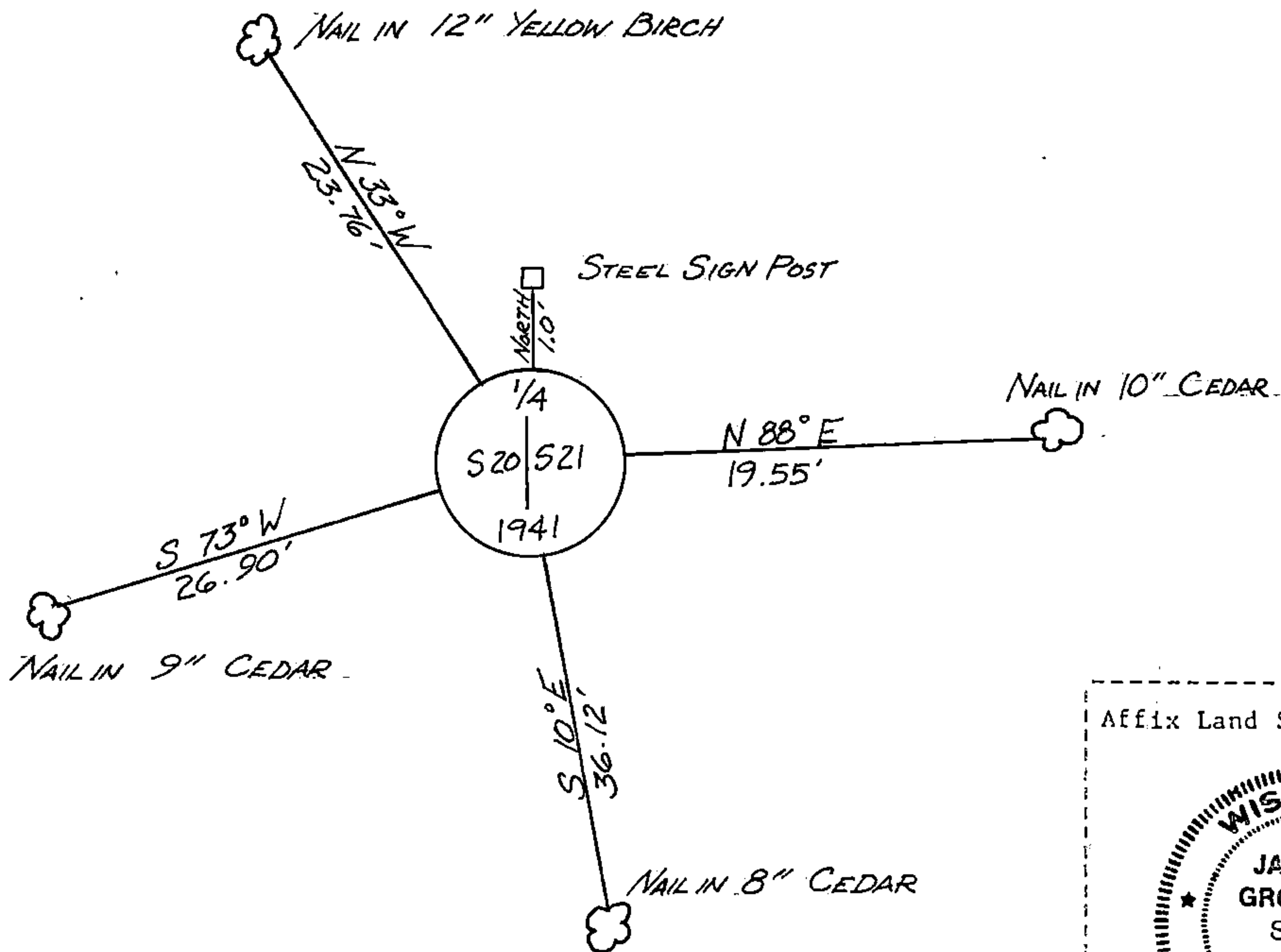
(e) Describe any material discrepancy between the location of the corner as restored or reestablished and the location of that corner as previously restored or reestablished by distance and direction. Show the discrepancy on the plan view drawing under (d), above. Show the distances between the corner as previously restored or reestablished and (1) the corner as restored or reestablished, and (2) to at least 2 of the witness monuments shown on the drawing in (d), above.

See drawing below.

(f) Was the corner restored through acceptance of (1) an obliterated evidence location, or, (2) a found perpetuated location?

The corner was restored through acceptance of a found perpetuated location.

(g&h) Was the corner reestablished through lost corner proportionate methods? If so, show the method, including the directions and distances to other public land survey corners used as evidence or used for proportioning in determining the corner location?



JAMES R. GROTHMAN, Registered Land Surveyor No. 1321

(i) I, James R. Grothman (type or print name) certify that the corner location shown on this record was determined by me or under my direction and control and that this U.S. Public Land Survey Monument Record is correct and complete to the best of my knowledge and belief.

James R. Grothman Signature 10/30/86 Date

Certificate ready for filing: W. Frank Hawley District Ranger 1/6/87 Date