

U.S. PUBLIC LAND SURVEY MONUMENT RECORD

Index No. R-7

State of Wisconsin }
County of Columbia } ss.

I JAMES R. GROTHMAN, do hereby certify that on the 7th day of October, 1986, I found evidence of the One Quarter corner of Sections 20 and 29 Township 39, North, Range 12 East, Fourth Principal Meridian, as described hereon; and that from this evidence I established a new monument and accessories as described hereon to perpetuate the original location of this corner.

Resident witnesses:

None

History of original corner establishment: Original survey in 1859 by William E. Daugherty. Dependent resurvey in 1941 by Hal D. Craig and Oscar B. Walsh. At 41.11 chains set an iron post, 3 feet long, 2 inches diameter, 27 inches in the ground with brass cap marked:

1/4	S20	From which the following bear:		
	S29	Yellow Birch	12"	N53°W
	1941	Maple		S27°E
				12 lks.
				15 lks. (rec. dist. 18 lks.)

Description of corner evidence found:

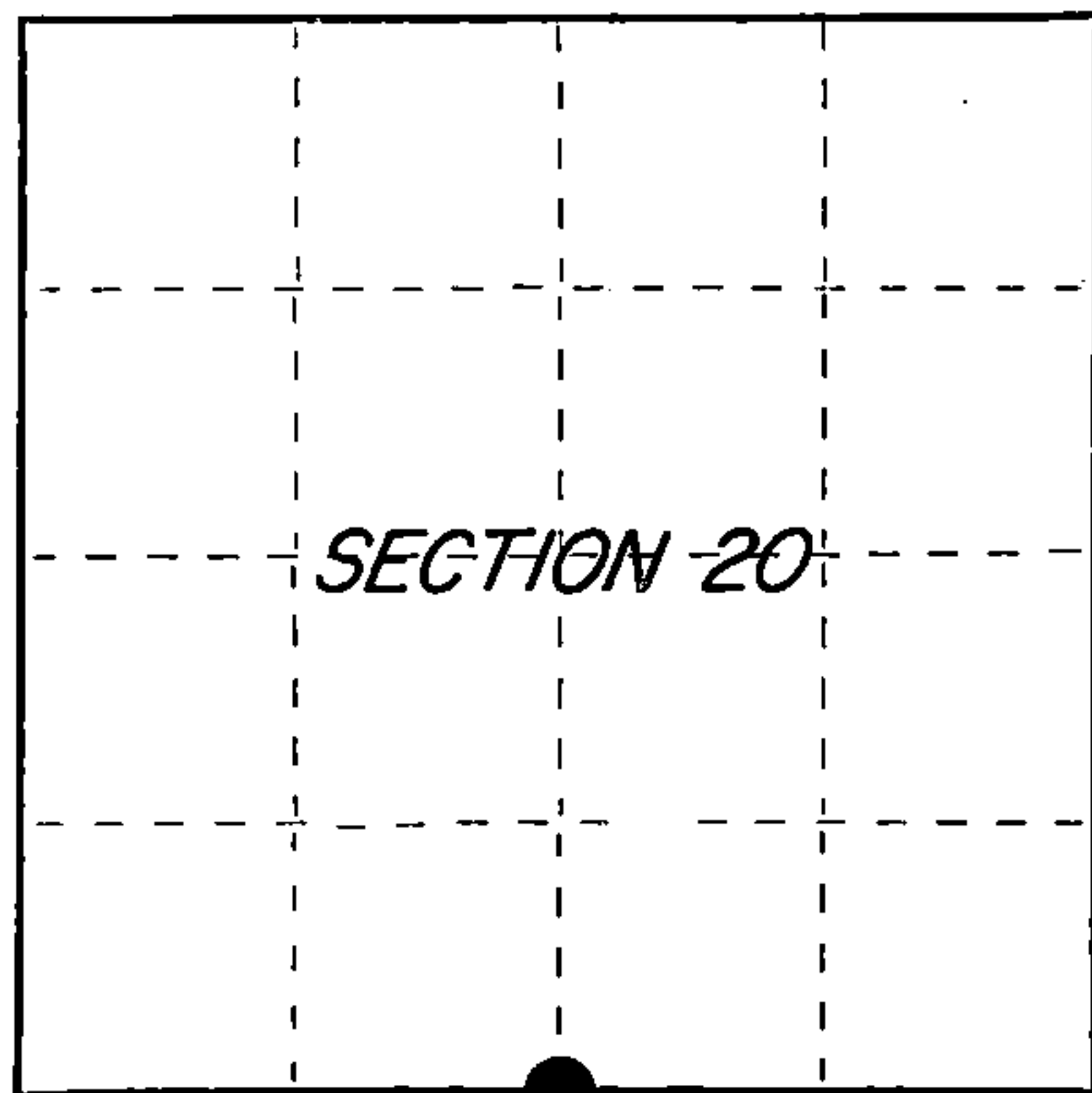
G.L.O. Monument as described and in place and the following bearing trees:

Maple	24"	S27°E	10.46 feet
Stump		N53°W	

Description of monument and accessories I established to perpetuate the original location of this corner.

Corner in good condition. Blazed, scribed painted and posted the following new bearing trees:

Hemlock	12"	N65°W	12.77 feet
Maple	10"	N15°E	37.87 feet
Hemlock	7"	S77°E	27.19 feet
Steel Signe Post		South	1.00 foot



○ = Corner monument restored.

Dated at PORTAGE, Wis., this 30 day of OCTOBER, 1986

Signature: James R. Grothman Title: RLS Registration No. 1321
(County Surveyor, Registered Land Surveyor, or other duly authorized official)

Office of Register of Deeds, County of Forest, I hereby certify that the within instrument was filed in this office for record on the 24th day of February, 1987, at 2:00 o'clock P. M.

Paul Aschenbrenner
(Register of Deeds)

By.....Deputy

REGISTER'S OFFICE
Forest County, Wis.

Received for record this 24th day of February, A.D., 1987, at 2:00 o'clock P.M. and recorded in Vol. CORNER RESTORATIONS page R-7

Paul Aschenbrenner
Register of Deeds

FORM NO. 985-A

H.C. Miller Company

Stock No. 26273

FOREST COUNTY

DOCUMENT NUMBER

132162

43912200020

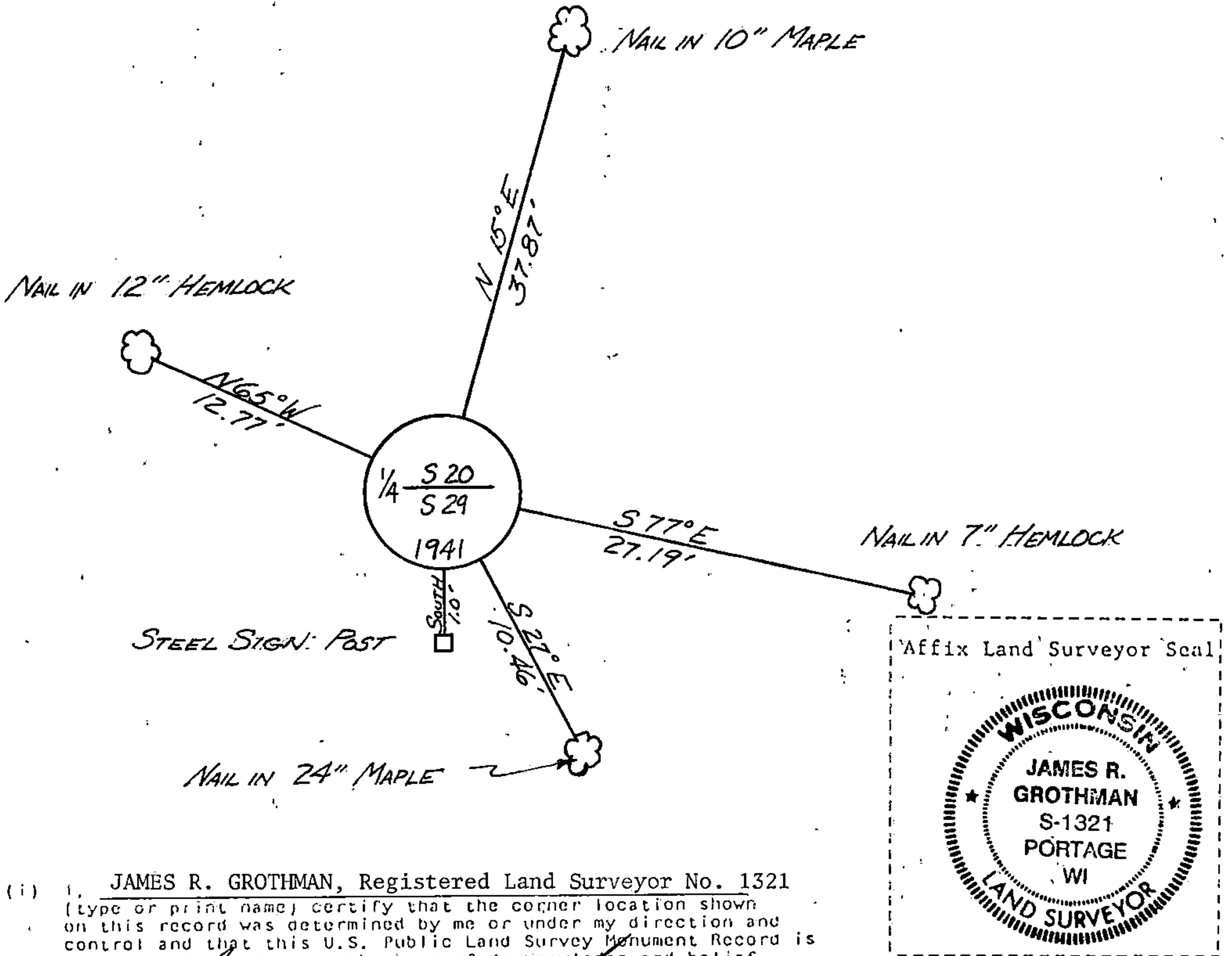
(e) Describe any material discrepancy between the location of the corner as restored or reestablished and the location of that corner as previously restored or reestablished by distance and direction. Show the discrepancy on the plan view drawing under (d), above. Show the distances between the corner as previously restored or reestablished and (1) the corner as restored or reestablished, and (2) to at least 2 of the witness monuments shown on the drawing in (d), above.

See drawing below

(f) Was the corner restored through acceptance of (1) an obliterated evidence location, or, (2) a found perpetuated location?

The corner was restored through acceptance of a found perpetuated location.

(g&h) Was the corner reestablished through lost corner proportionate methods? If so, show the method, including the directions and distances to other public land survey corners used as evidence or used for proportioning in determining the corner location?



(i) I, JAMES R. GROTHMAN, Registered Land Surveyor No. 1321
 (type or print name) certify that the corner location shown on this record was determined by me or under my direction and control and that this U.S. Public Land Survey Monument Record is correct and complete to the best of my knowledge and belief.

James R. Grothman 10/30/86
 Signature Date

Certificate ready for filing: M. Frank Aubrey 1/6/87
 District Ranger Date