

U.S. PUBLIC LAND SURVEY MONUMENT RECORD

Index No. L-5

REGISTER'S OFFICE
Forest County, Wis.
Received for record this 24th day
of February, D., 1987 at
2:00 o'clock P.M. and recorded
in Vol. CORNER RESTORATIONS
L-5
Paul Aschenbrenner
Register of Deeds

FORM NO. 985-A
H.C. Miller Company
Madison, Wisconsin

Stock No. 26273

DOCUMENT NUMBER
132156

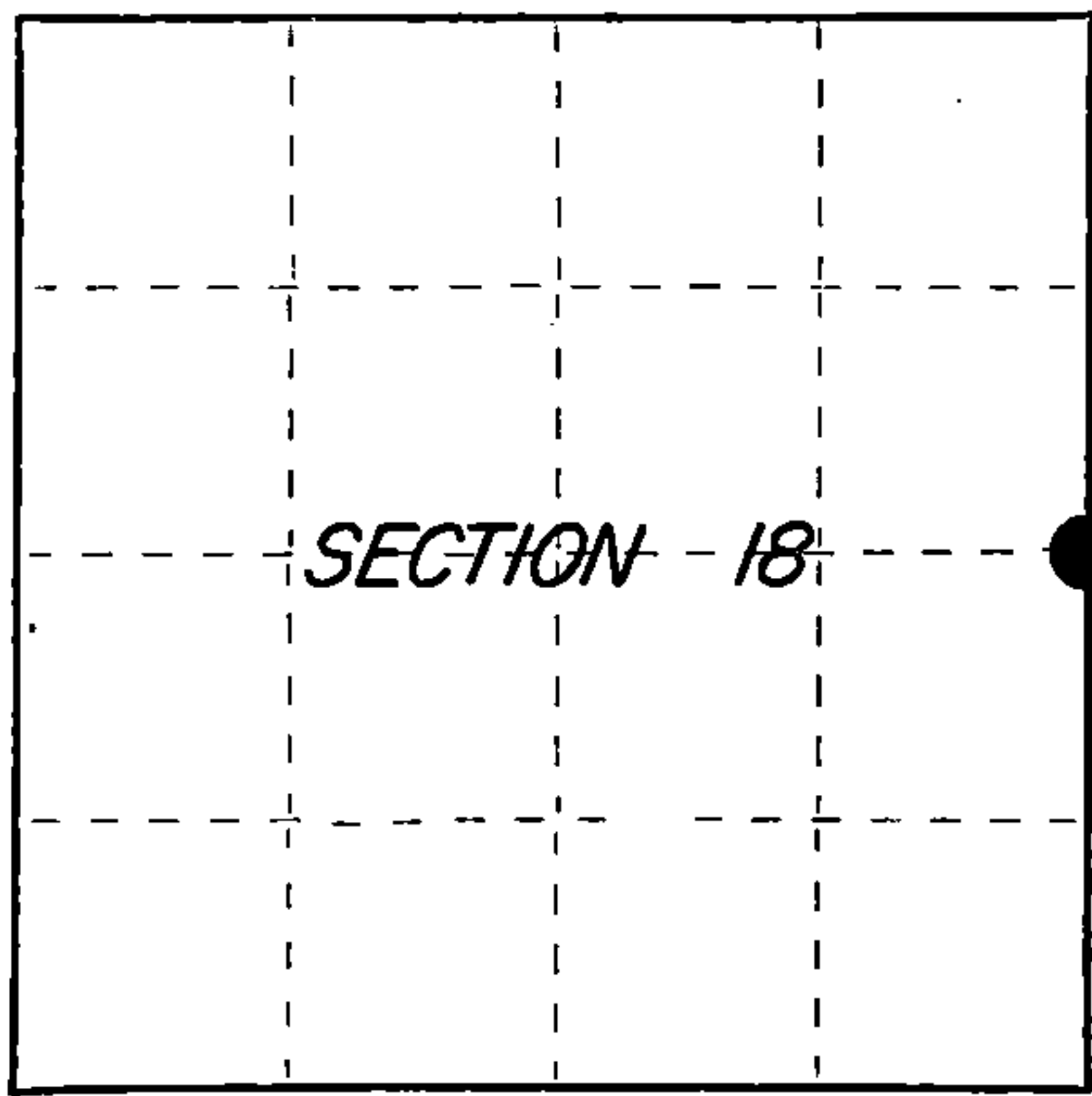
FOREST COUNTY

State of Wisconsin }
County of Columbia } ss.

I, James R. Grothman, do hereby
certify that on the 15th day
of October, 1986, I found
evidence of the One Quarter
corner of Section 17 & 18
Township 39 North, Range
12 East, Fourth Principal Meridian,
as described hereon; and that from this evidence
I established a new monument and accessories
as described hereon to perpetuate the original
location of this corner.

Resident witnesses:

None



○ = Corner monument restored.

History of original corner establishment: Original survey in 1859 by William E. Daugherty.
Dependent resurvey in 1941 by Hal D. Craig and Oscar B. Walsh. Set an iron
post, 3 feet long, 2 inch diameter, 27 inches in the ground with brass cap
marked:

1/4	From which the following bear:			
S18 S17	Cedar	7"	S21°E	26 lks
1941	Cedar	7"	S61-1/4°W	12 lks

Description of corner evidence found:

G.L.O. monument as described and in place.

Found the following bearing trees:	Cedar	11"	S61°W	7.92 feet
	Cedar	11"	S21°E	17.16 feet

Description of monument and accessories I established to perpetuate the original location of this corner.

Corner in good condition. Blazed, scribed, painted, and posted all found bearing
trees and the following new bearing trees:

Cedar	10"	S69°E	10.00 feet
Cedar	10"	N18°E	22.55 feet
Steel Sign Post	Northeast	1.00 foot±	

Dated at PORTAGE Wis., this 30 day of OCTOBER, 1986

Signature James R. Grothman Title RLS Registration No. 1321
(County Surveyor, Registered Land Surveyor, or other duly authorized official)

Office of Register of Deeds, County of Forest, I hereby certify that the within
instrument was filed in this office for record on the 24th day of February, 1987
at 2:00 o'clock P.M.

Paul Aschenbrenner
(Register of Deeds)

By Deputy

43912182000

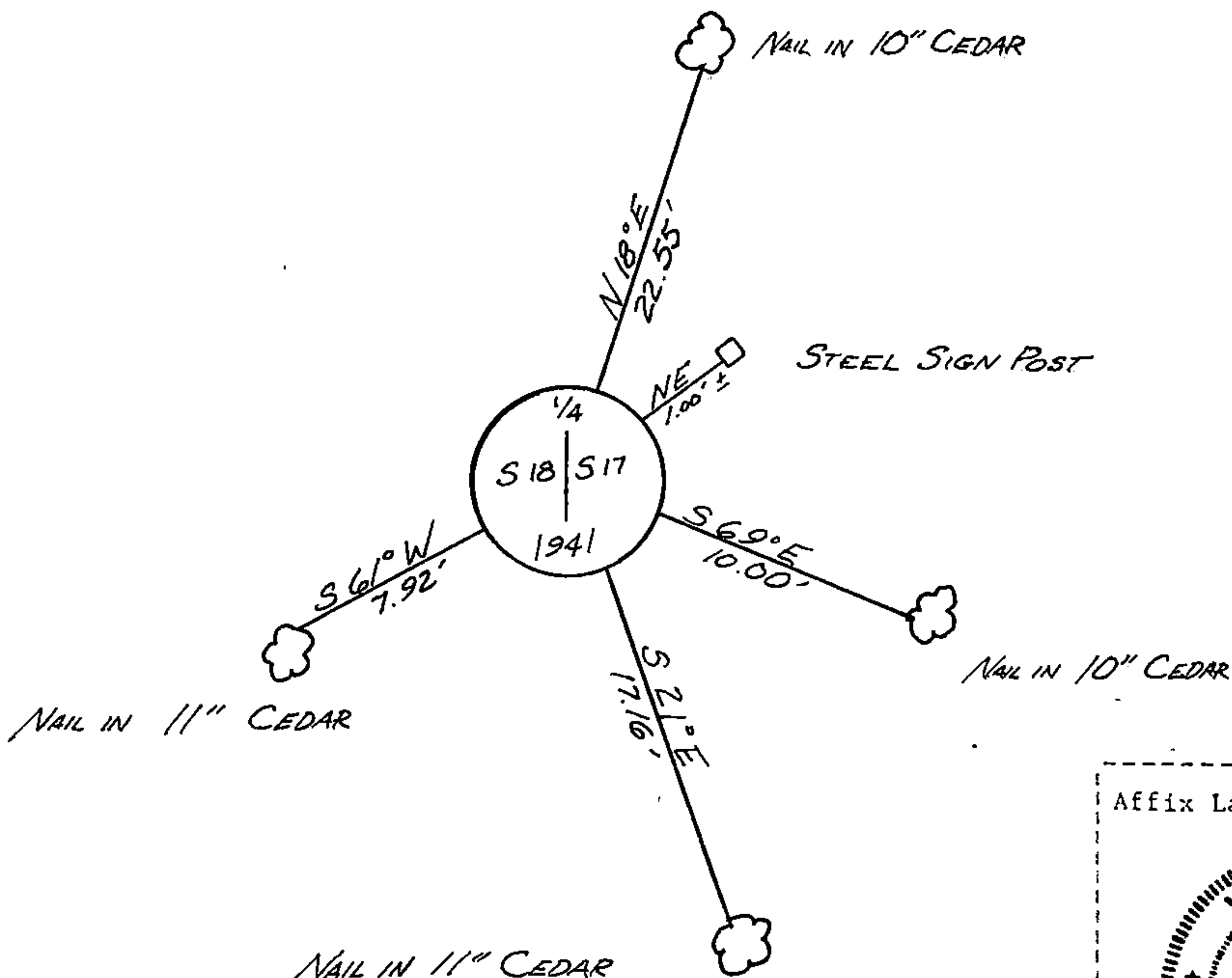
(e) Describe any material discrepancy between the location of the corner as restored or reestablished and the location of that corner as previously restored or reestablished by distance and direction. Show the discrepancy on the plan view drawing under (d), above. Show the distances between the corner as previously restored or reestablished and (1) the corner as restored or reestablished, and (2) to at least 2 of the witness monuments shown on the drawing in (d), above.

See drawing below

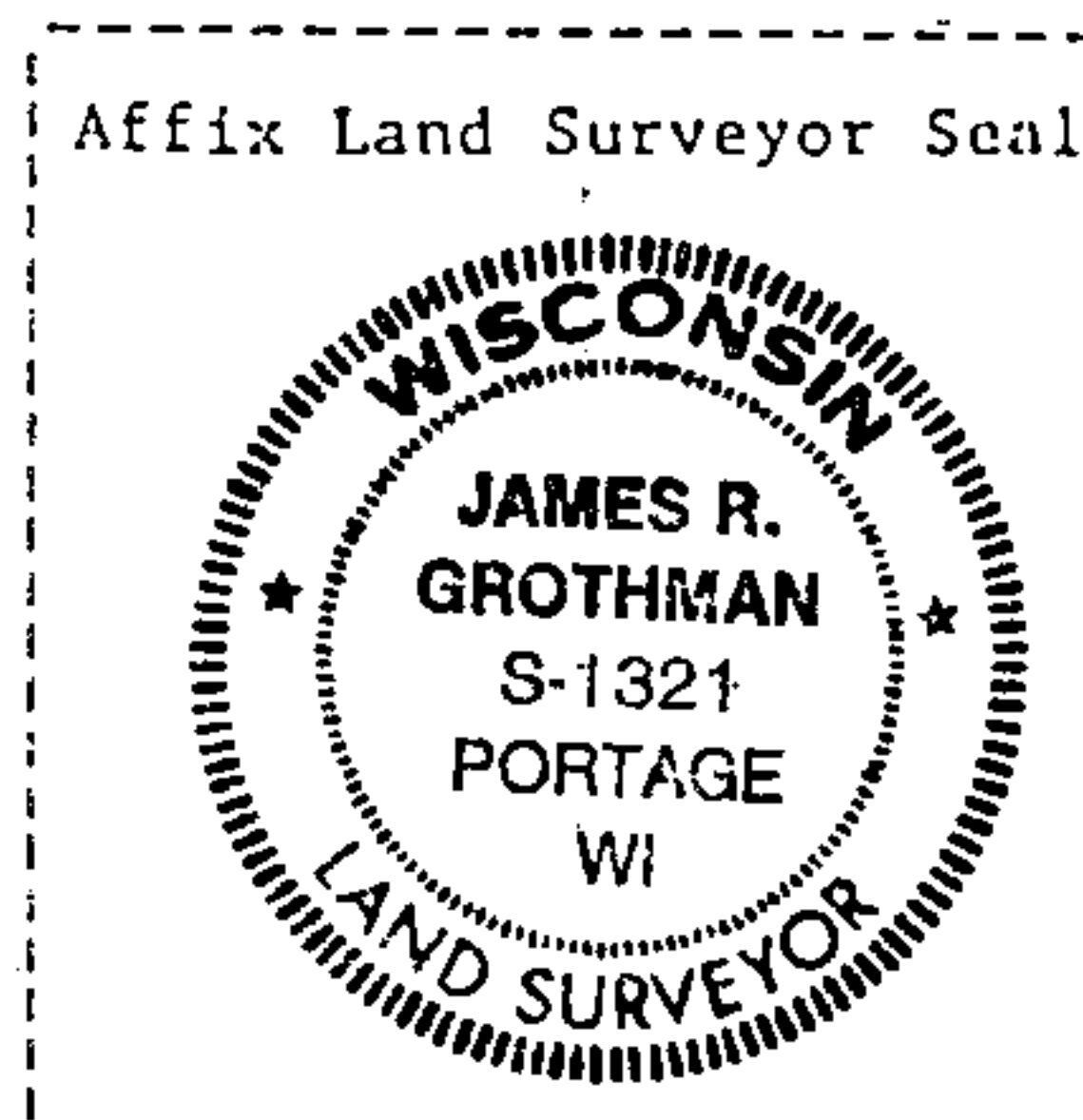
(f) Was the corner restored through acceptance of (1) an obliterated evidence location, or, (2) a found perpetuated location?

Corner was restored through acceptance of a found perpetuated location.

(g&h) Was the corner reestablished through lost corner proportionate methods? If so, show the method, including the directions and distances to other public land survey corners used as evidence or used for proportioning in determining the corner location?



(i) I, JAMES R. GROTHMAN, Registered Land Surveyor No. 1321 (type or print name) certify that the corner location shown on this record was determined by me or under my direction and control and that this U.S. Public Land Survey Monument Record is correct and complete to the best of my knowledge and belief.



Signature

Date

Certificate ready for filing:

District Ranger

Date