

U.S. PUBLIC LAND SURVEY MONUMENT RECORD

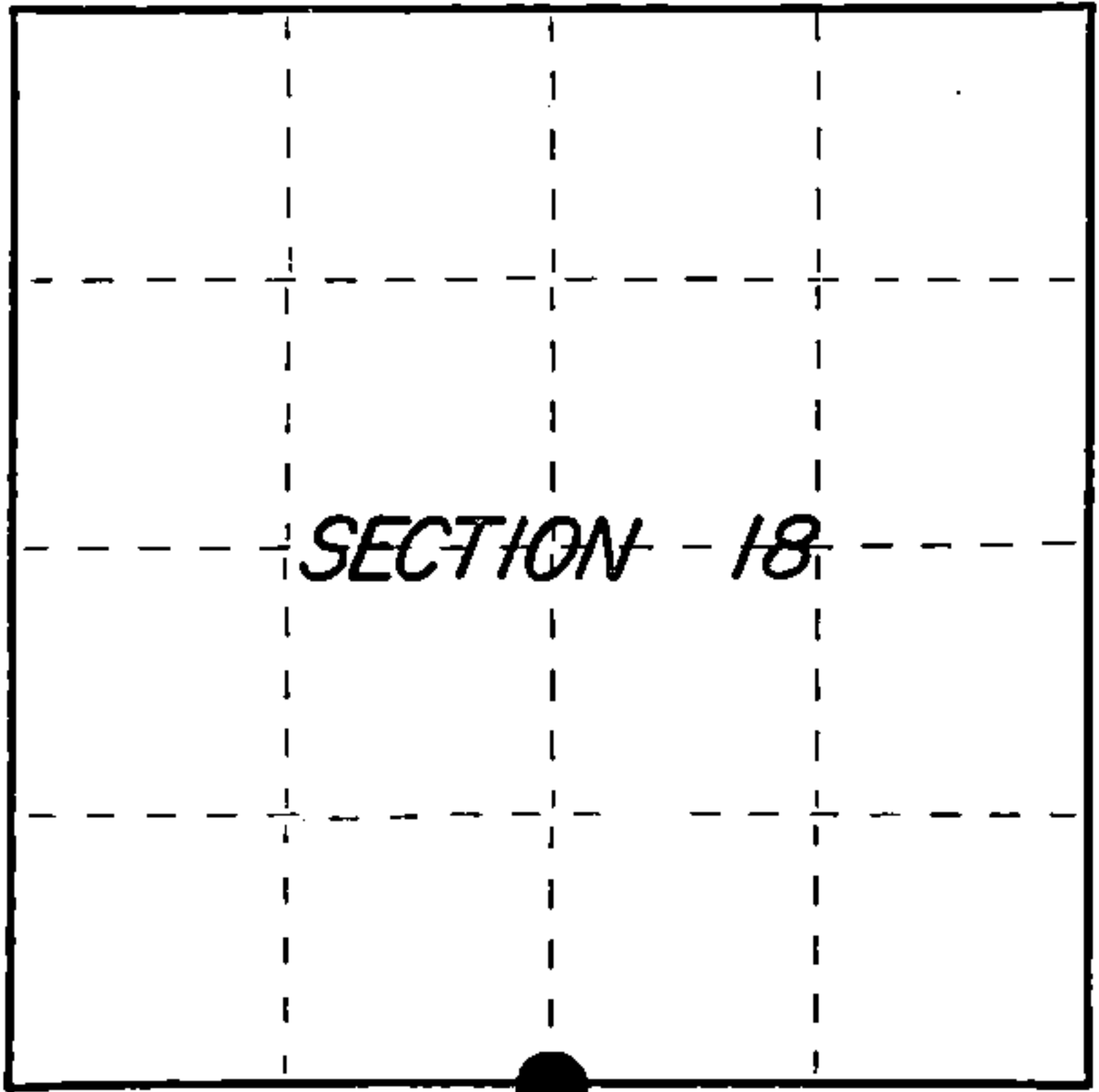
Index No. N-3

State of Wisconsin }
County of Columbia } ss.

I, James R. Grothman, do hereby certify that on the 15th day of October, 1986, I found evidence of the One Quarter corner of Sections 18 and 19 Township 39 North, Range 12 East, Fourth Principal Meridian, as described hereon; and that from this evidence I established a new monument and accessories as described hereon to perpetuate the original location of this corner.

Resident witnesses:

None



○ = Corner monument restored.

History of original corner establishment: Original survey in 1859 by William E. Daugherty. Dependent resurvey in 1941 by Hal D. Craig and Oscar B. Walsh. Set a concrete monument 24 inches long, 6 inch diameter, 18 inches in the ground with an iron post 23 inches long, 1 inch diameter, embedded in the center, with brass cap marked: 1/4 S18 S19

From which the following bear:
1941 Cedar 7" N18°W 45 lks
Cedar 5" S59°W 12 lks

Description of corner evidence found:

G.L.O. monument as described and in place.
The following bearing trees: Cedar (down & dead) 5" S59°W 7.92 feet

Description of monument and accessories I established to perpetuate the original location of this corner.

Corner in good condition. Blazed, scribed, painted, and posted the following new bearing trees:

Cedar	8"	S77°E	22.21 feet
Cedar	12"	S28°E	25.79 feet
White Birch	4"	S80°W	22.08 feet
Cedar	5"	N13°W	41.87 feet
Steel Sign Post	South		1.00 foot ±

Dated at Portage Wis., this 30 day of OCTOBER, 1986

Signature James R. Grothman Title PLS Registration No. 1321
(County Surveyor, Registered Land Surveyor, or other duly authorized official)

Office of Register of Deeds, County of Forest, I hereby certify that the within instrument was filed in this office for record on the 24th day of February, 1987 at 2:00 o'clock P. M.

Paul Aschenbrenner
(Register of Deeds)

By Deputy

REGISTER'S OFFICE

Forest County, Wis.

Received for record this 24th day of February, A.D., 1987 at 2:00 o'clock P.M. and recorded in Vol. CORNER RESTORATIONS page N-3

FOREST COUNTY

Stock No. 26273

DOCUMENT NUMBER
132159

FORM NO. 985-A

H.C. Miller Company
Manufactured in Wisconsin

Register of Deeds

43912180020

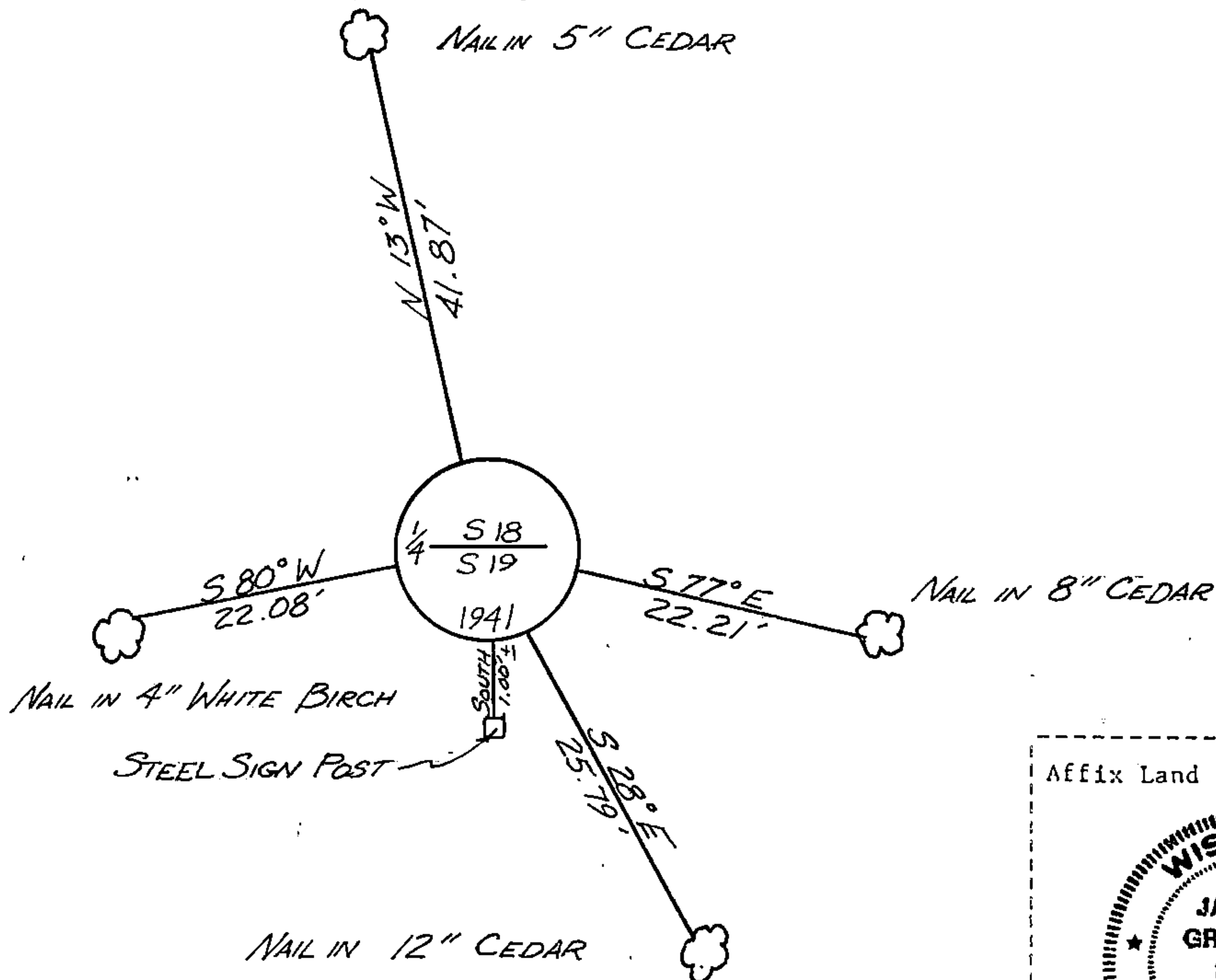
(e) Describe any material discrepancy between the location of the corner as restored or reestablished and the location of that corner as previously restored or reestablished by distance and direction. Show the discrepancy on the plan view drawing under (d), above. Show the distances between the corner as previously restored or reestablished and (1) the corner as restored or reestablished, and (2) to at least 2 of the witness monuments shown on the drawing in (d), above.

See drawing below

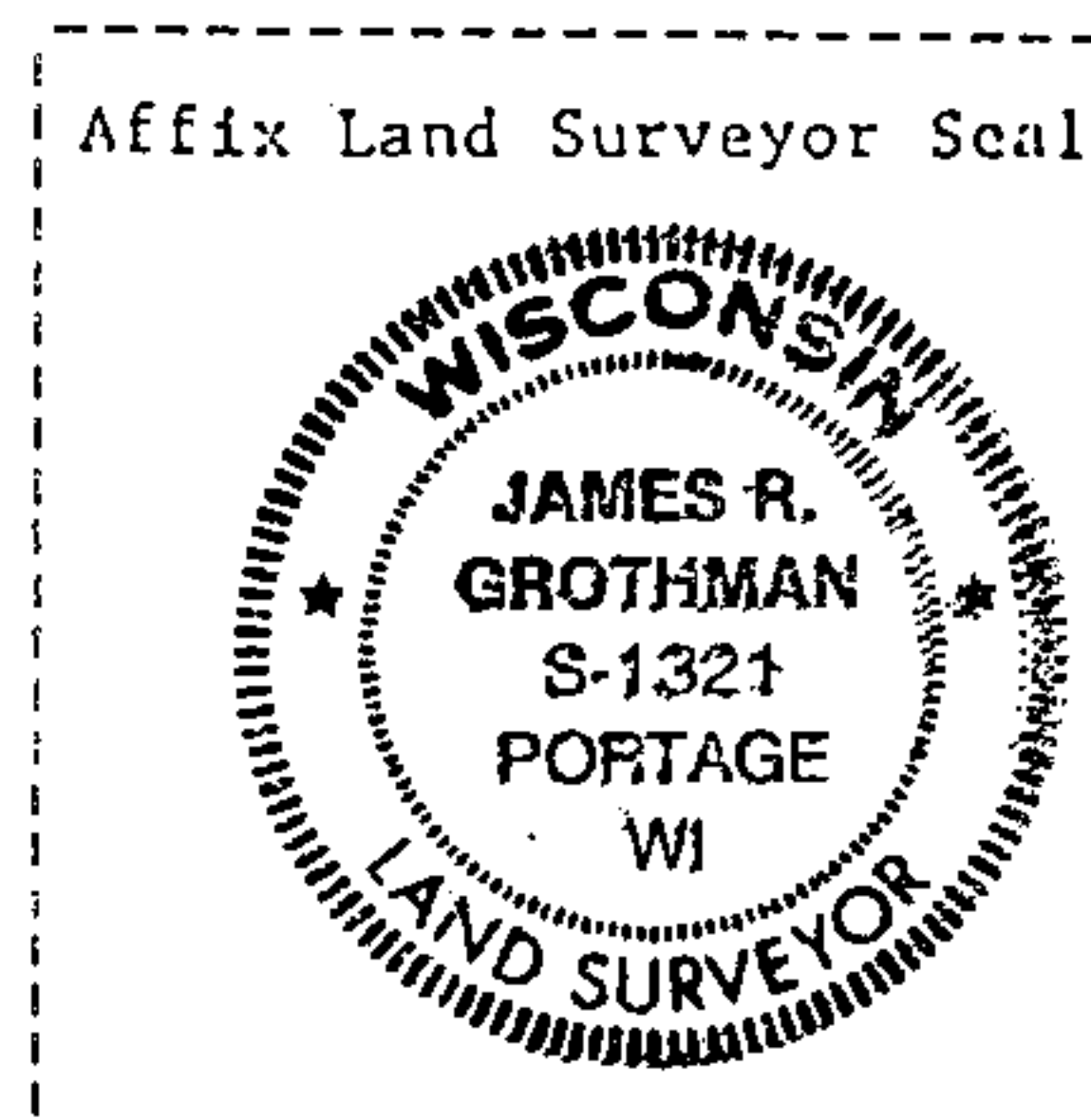
(f) Was the corner restored through acceptance of (1) an obliterated evidence location, or, (2) a found perpetuated location?

Corner was restored through acceptance of a found perpetuated location.

(g&h) Was the corner reestablished through lost corner proportionate methods? If so, show the method, including the directions and distances to other public land survey corners used as evidence or used for proportioning in determining the corner location?



(i) I, James R. Grothman, Registered Land Surveyor No. 1321 (type or print name) certify that the corner location shown on this record was determined by me or under my direction and control and that this U.S. Public Land Survey Monument Record is correct and complete to the best of my knowledge and belief.



Signature

Date

Certificate ready for filing:

District Ranger

Date