

CERTIFIED LAND CORNER RESTORATION

State of Wisconsin }
County of Forest } ss.

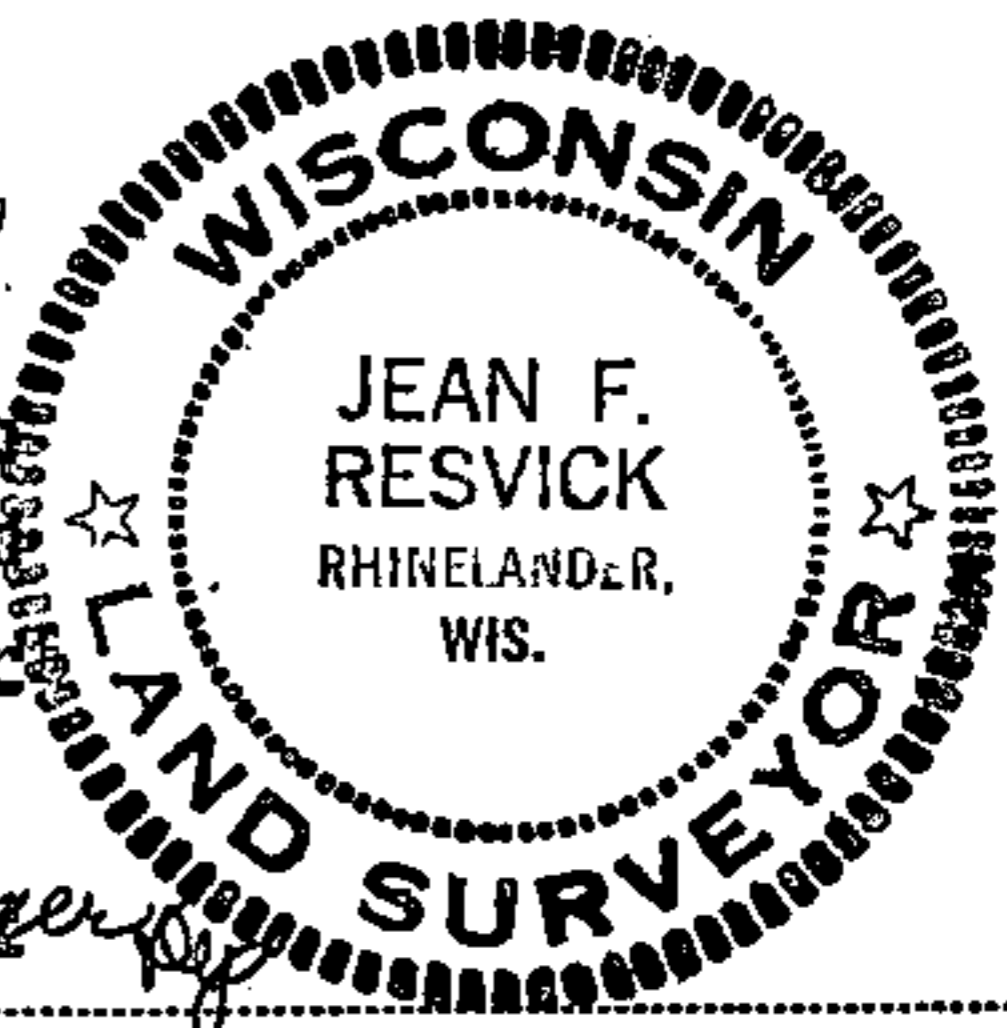
I Jean F. Resvick, do hereby certify that on the 14 day of September, 1962, I found evidence of the Northwest Section corner of Section 20 Township 39 North, Range 12 East, Fourth Principal Meridian, as described hereon; and that from this evidence I established a new monument and accessories as described hereon to perpetuate the original location of this corner:

Description of original monument and accessories and subsequent restorations:
Surveyed in 1859 by William E. Daugherty
Dependent resurvey in 1941 by Hal D. Craig
Set concrete monument 24 ins. long and 6 ins. diam., 18 ins. in ground with iron post 23 ins. long, and 1 in. diam., embedded in center with brass cap mkd., T39N, R12E, S18, S17, S19, S20, 1941, from which
A norway pine stump, 14 ins. diam., bears S 66° E, 28 lks. dist.
A white pine, 7 ins. diam., bears N 15° 15' E, 34 lks. dist.
A norway pine, 10 ins. diam., bears S 81° 45' E, 31-1/2 lks. dist.

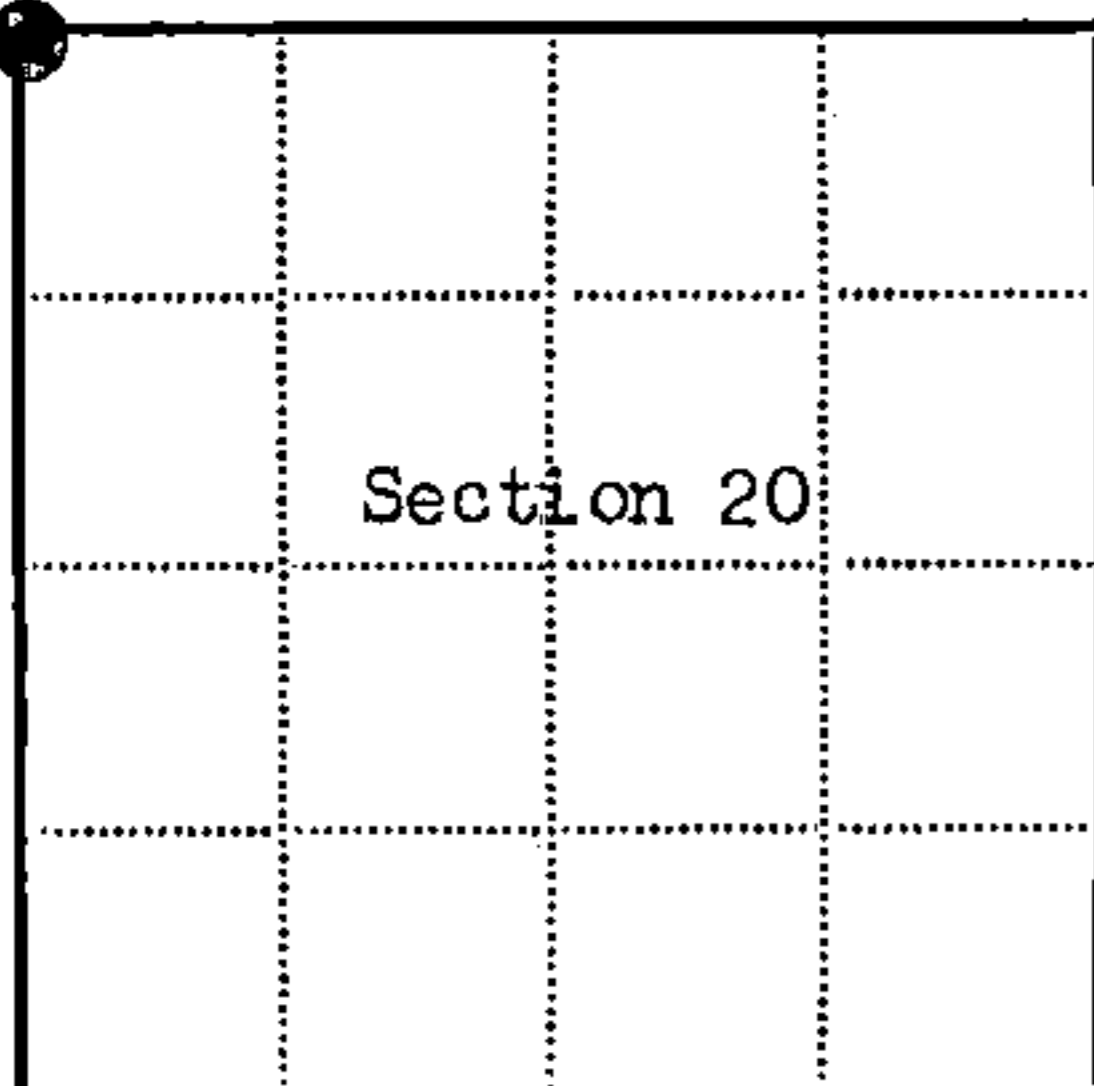
Description of corner evidence found:
Monument found as described above, from which
A norway pine stump, 10 ins. diam., bears S 81° 45' E, 21.12 ft. dist., scribed.
A white pine, 15 ins. diam., bears N 15° 15' E, 22.4 ft. dist.
A norway stump, badly rotted, bears S 66° E, 18.48 ft. dist.

Description of ~~monument and~~ accessories I established to perpetuate the original location of this corner:
Blazed and scribed the following new bearing trees
A norway pine, 4 ins. diam., bears S 70° 30' E, 11.70 ft. or 17.7 lks. dist.
A jack pine, 7 ins. diam., bears S 29° W, 10.30 ft. or 15.6 lks. dist.
A norway pine, 8 ins. diam., bears N. 73° 30' W, 15.30 ft. or 23.21 lks. dist.
Set 4 x 4 post by monument 4 ft. above ground.

REGISTER'S OFFICE } 90027
Forest County, Wis. }
Received for record this 21 day of May
A. D., 19 65 at 8:30 o'clock A. M. and
recorded in Vol. I of Cert. Cor.
page N-5



ANNA PETERSON Karl A. Unger
Resident witnesses Register of Deeds



● = Corner monument restored
□ =

Dated at Rhinelander Wisconsin, this 27th day of April 19 65.
Signature Jean F. Resvick Title Cadastral Surveyor
(County Surveyor, Registered Land Surveyor, or other duly authorized official)
Surveyors Registration No. S-802

Office of _____ County of _____
I hereby certify that the within instrument was filed in this office for record on the _____ day of _____ 19 _____, and was filed in Book No. _____ Page No. _____ of County Records.

Signature _____ Title _____

Township 39 North, Range 12 East, Section 20, Index No. N-5, Page No. _____

43917180000

U.S. PUBLIC LAND SURVEY MONUMENT RECORD

Index No. N-5

State of Wisconsin }
County of Columbia } ss.

I JAMES R. GROTHMAN, do hereby certify that on the 7th day of October, 1986, I found evidence of the Section corner of 17, 18, 19, 20 Township 39 North, Range 12 East, Fourth Principal Meridian, as described hereon; and that from this evidence I established a new monument and accessories as described hereon to perpetuate the original location of this corner.

Resident witnesses:

None

History of original corner establishment: Original survey in 1859 by William E. Daugherty. Dependent resurvey in 1941 by Hal D. Craig and Oscar B. Walsh. At 82.80 chains set a concrete monument 24 inches long, 6 inches diameter, 18 inches in the ground, with an iron post 23 inches long, 1 inch diameter embedded in center, with brass cap marked:

T39NR11E	From which the following bear:			
S18 S17	Norway Pine stump	14" dia.	S66°E	28 lks.
S19 S20	White Pine	7" dia.	N15-1/4°E	34 lks.
1941	Norway Pine	10" dia.	S81-3/4°E	31-1/2 lks.

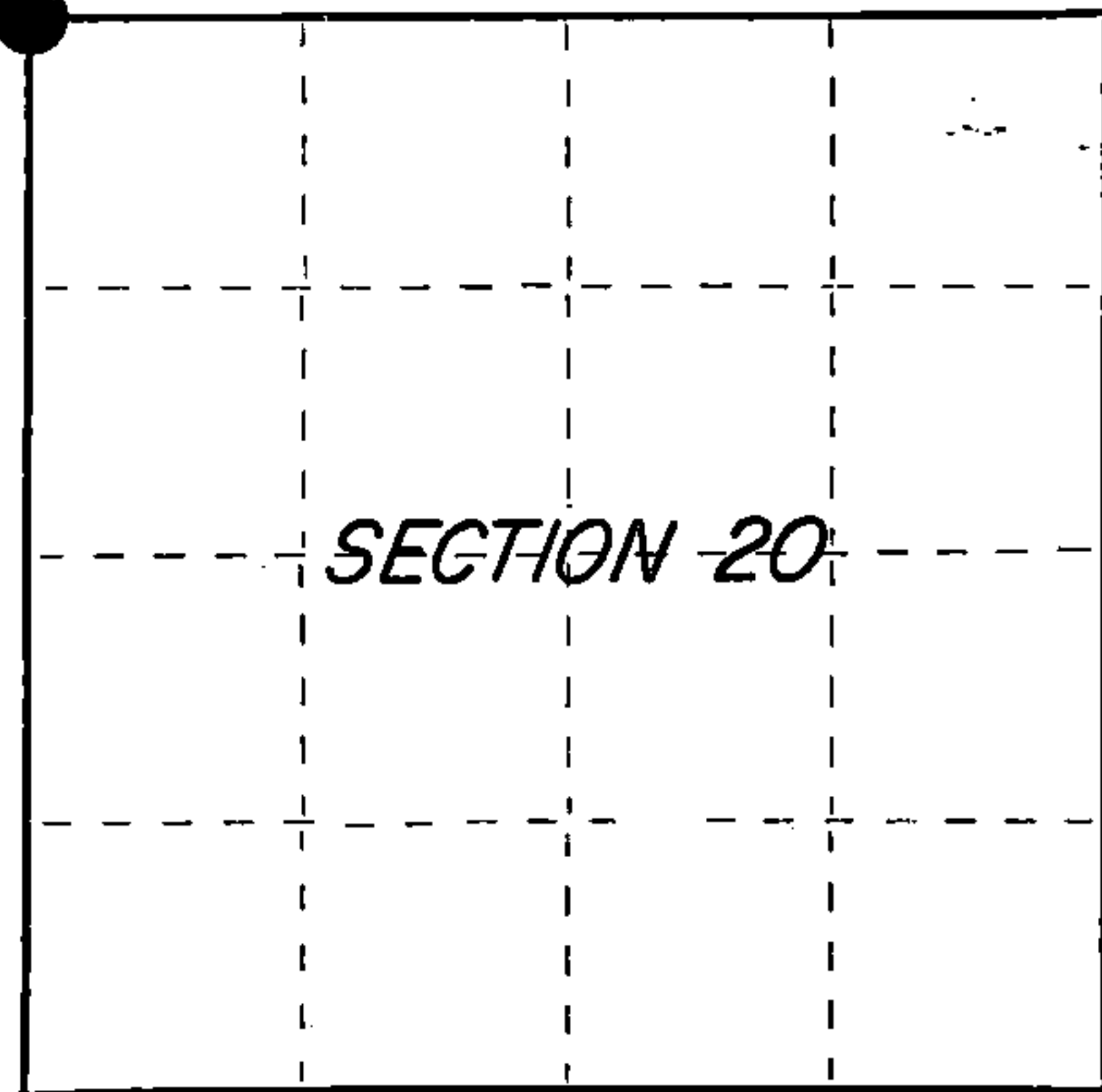
Description of corner evidence found:

G.L.O. Monument was described and in place with the following bearing trees:

12" dia. burned pine	S60°E	11.74 feet
8" dia. burned pine	S28°W	10.15 feet
14" dia. burned pine	N75°W	15.28 feet
15" dia. burned pine	N16°E	21.99 feet

Description of monument and accessories I established to perpetuate the original location of this corner. Corner in good condition. Set the following witness corners as new corner references:

1"x36" Aluminum Monument w/Alum. cap	S89°03'22"E	35.00 feet
1"x36" Aluminum Monument w/Alum. cap	S6°43'52"W	35.00 feet
1"x36" Aluminum Monument w/Alum. cap	S88°56'19"W	35.00 feet
1"x36" Aluminum Monument w/Alum. cap	N0°13'21"W	35.00 feet
Steel Sign Post	Southwest	1.00 foot



○ = Corner monument restored.

Dated at PORTAGE, Wis., this 10th day of OCTOBER, 1986.

Signature James R. Grothman Title R.L.S. Registration No. S-1321
(County Surveyor, Registered Land Surveyor, or other duly authorized official)

Office of Register of Deeds, County of Forest. I hereby certify that the within instrument was filed in this office for record on the 24th day of February, 1987 at 2:00 o'clock P. M.

Paul Aechentrenner
(Register of Deeds)

By _____ Deputy

REGISTER'S OFFICE

Forest County, Wis.

Received for record this 24th day of February A.D. 1987 at 2:00 o'clock P. M. and recorded in Vol. CORNER RESTORATIONS page N-5

Paul Aechentrenner
Register of Deeds

FORM NO. 985-A

H.C. Miller Company

Stock No. 26273

DOCUMENT NUMBER
132155

FOREST COUNTY

43912180000

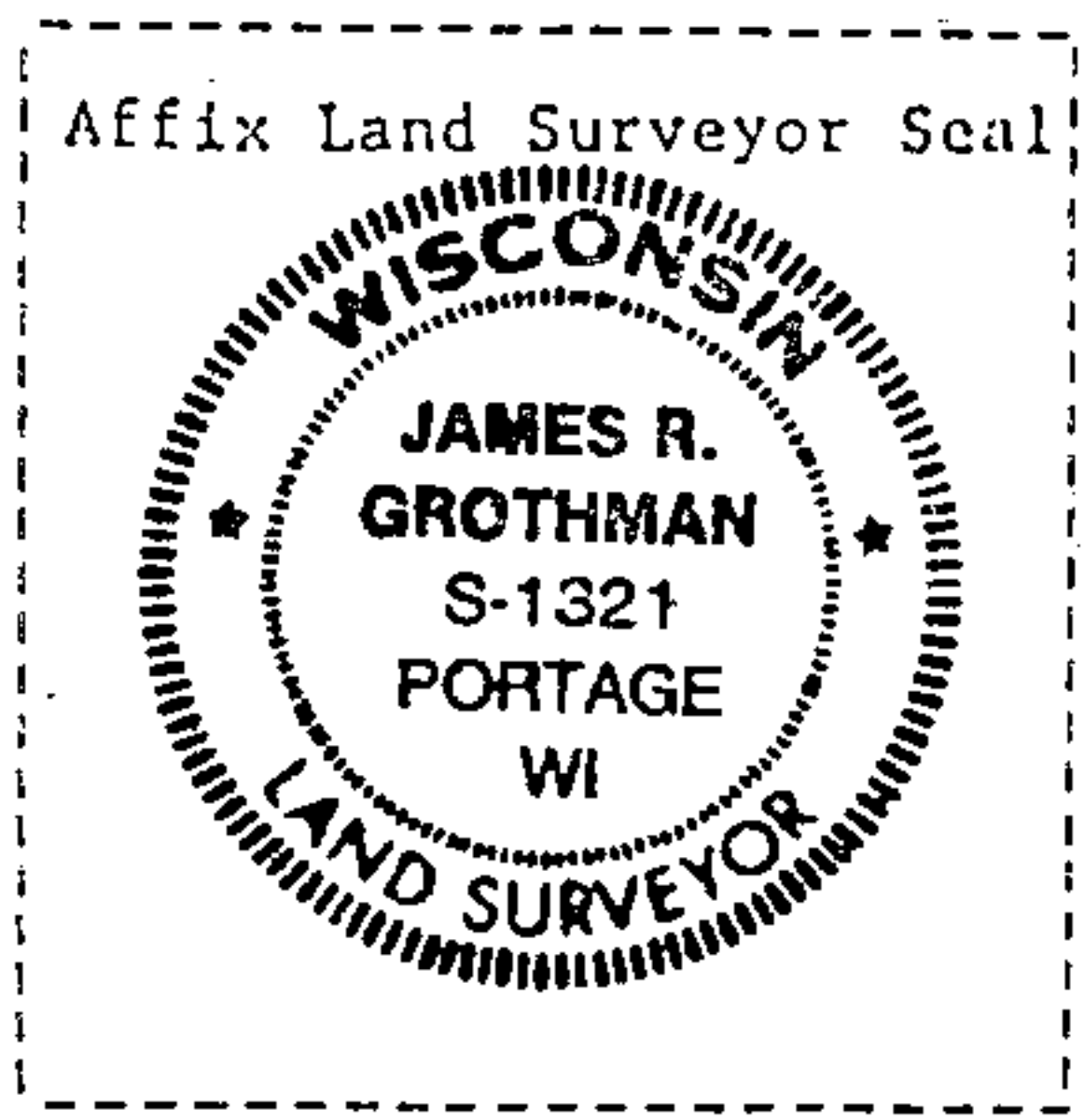
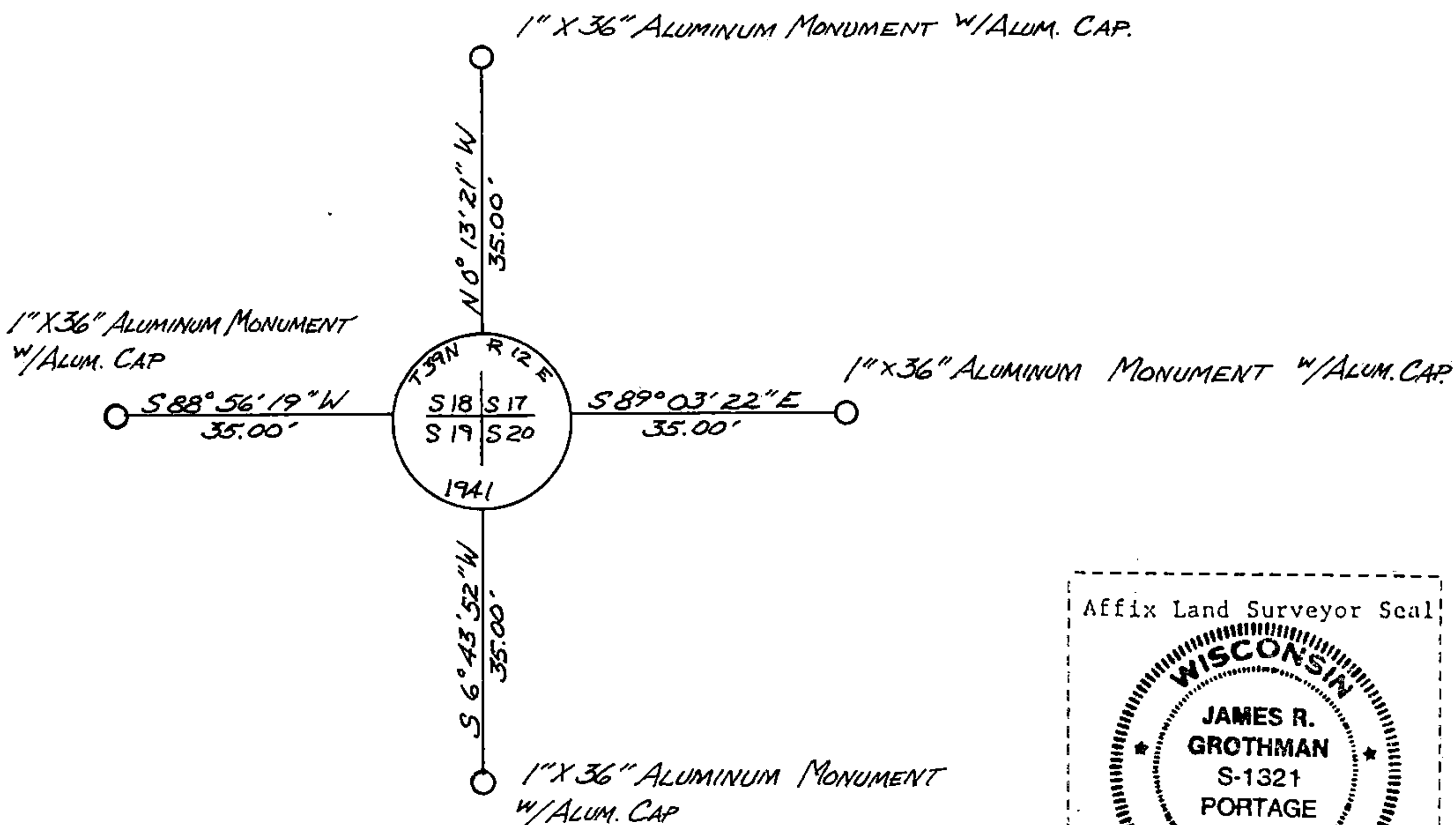
(e) Describe any material discrepancy between the location of the corner as restored or reestablished and the location of that corner as previously restored or reestablished by distance and direction. Show the discrepancy on the plan view drawing under (d), above. Show the distances between the corner as previously restored or reestablished and (1) the corner as restored or reestablished, and (2) to at least 2 of the witness monuments shown on the drawing in (d), above.

See drawing below

(f) Was the corner restored through acceptance of (1) an obliterated evidence location, or, (2) a found perpetuated location?

The corner was restored through a found perpetuated location.

(g&h) Was the corner reestablished through lost corner proportionate methods? If so, show the method, including the directions and distances to other public land survey corners used as evidence or used for proportioning in determining the corner location?



(i) I, JAMES R. GROTHMAN, Registered Land Surveyor No. 1321
 (type or print name) certify that the corner location shown on this record was determined by me or under my direction and control and that this U.S. Public Land Survey Monument Record is correct and complete to the best of my knowledge and belief.

James R. Grothman 10/10/86
 Signature Date

Certificate ready for filing: N. Frank Heubey 1/6/87
 District Ranger Date