

Stock No. 26273

158091

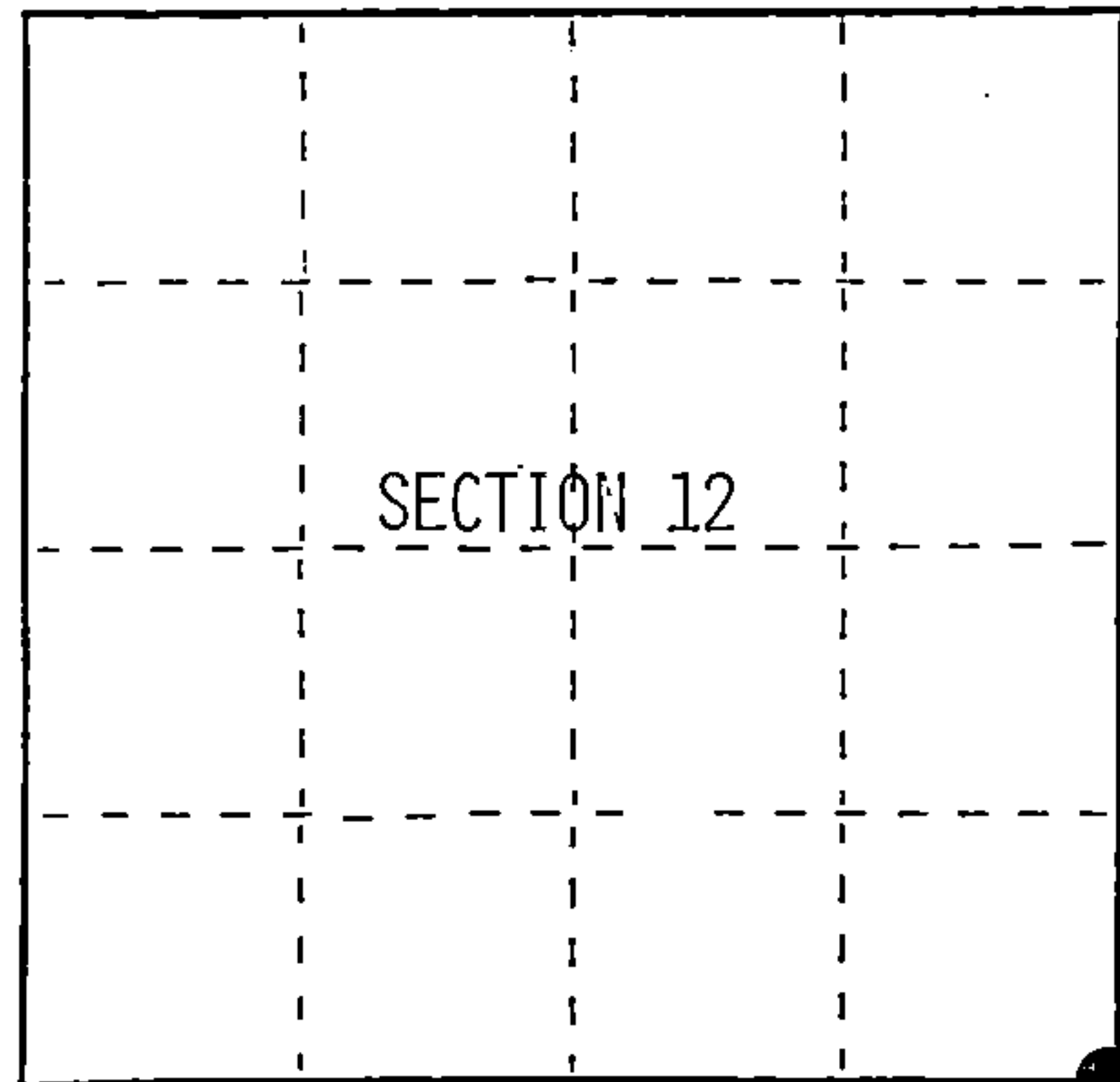
U.S. PUBLIC LAND SURVEY MONUMENT RECORD

Index No. J-25

State of Wisconsin }
County of Forest } ss.

I, William B. Cochrane, do hereby
certify that on the 4th day
of January, 1993, I found
evidence of the Southeast Section
corner of Section 12
Township 39, North, Range
12 East, Fourth Principal Meridian,
as described hereon; and that from this evidence
I established a new monument and accessories
as described hereon to perpetuate the original
location of this corner.

Resident witnesses:



○ = Corner monument restored.

History of original corner establishment:

Dependent Resurvey in 1941 by Hal D. Craig. N00°-10'W between Sections 13 and 18, at proportionate distance of 79.37 chains, set a concrete monument, 24 ins. long, 6 ins. in diameter, with an iron post in center and a brass cap marked; T39N, R12E, R13E, S12, S13, S7, S18, 1941. From which the following bear;

Poplar	5"	N74°E	23 lks.
Birch	6"	S18°E	65 lks.
Birch	6"	S80°30'W	33 lks.
Poplar	5"	N42°W	16 lks.

Description of corner evidence found:

Found the monument as described above, in place, from which the following bear;

Birch	9"	S80°-30'W	21.78 feet
-------	----	-----------	------------

Description of monument and accessories I established to perpetuate the original location of this corner.

Blazed and scribed the following new bearing trees;

Balsam	3"	N27°E	13.74 feet
Birch	12"	S19°E	42.52 feet
Birch	9"	N66°W	14.54 feet
Steel Sign Post		North	0.80 feet

Dated at Hiles, Wis., this 25th day of January, 1993

Signature William B. Cochrane Title Land Surveyor Registration No. S-1107
(County Surveyor, Registered Land Surveyor, or other duly authorized official)

Office of Register of Deeds, County of Forest, I hereby certify that the within
instrument was filed in this office for record on the 20th day of March, 1997
at 1:30 o'clock P. M.

(Register of Deeds)

By Hal Induriez Deputy

43912/2000

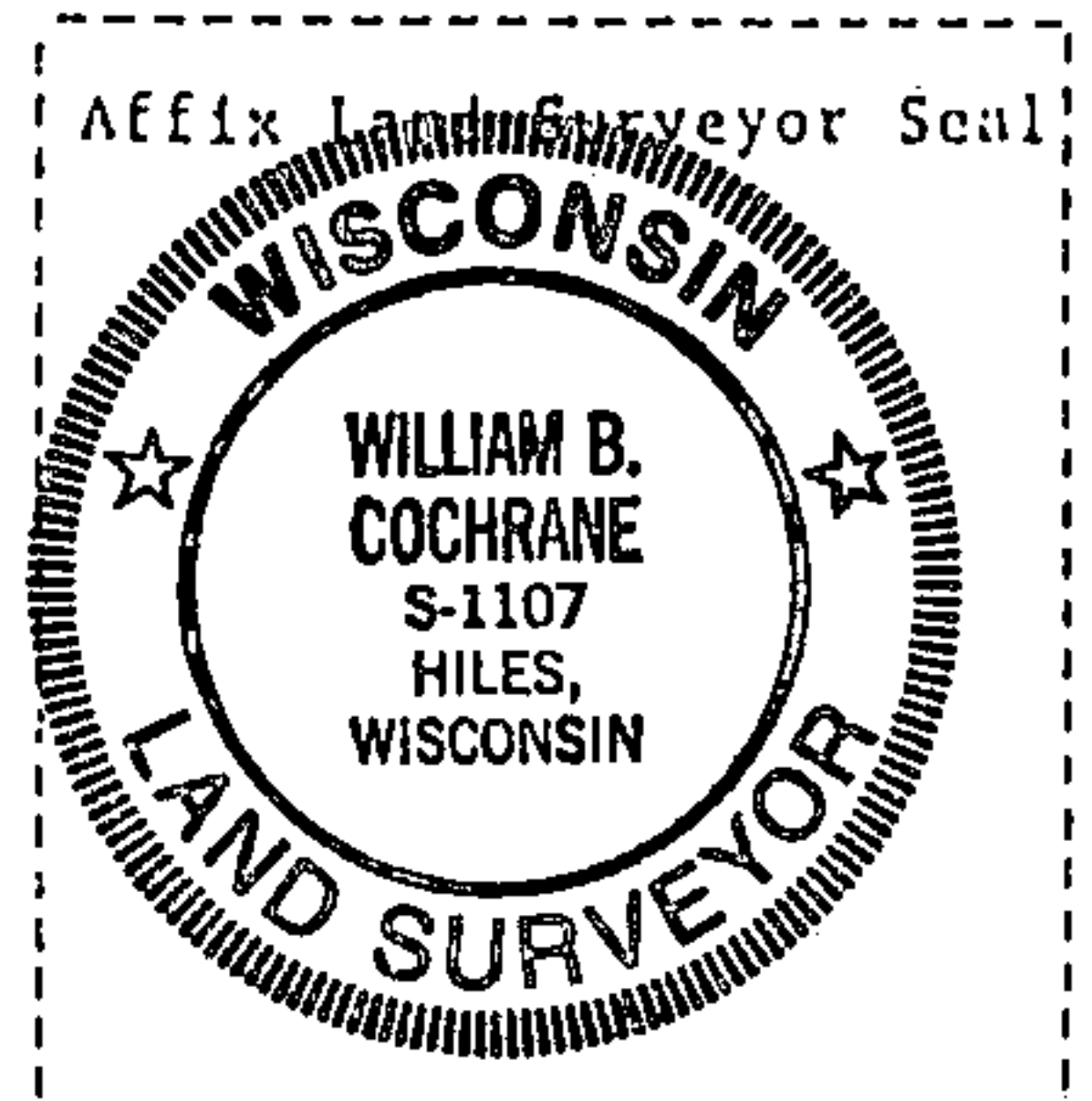
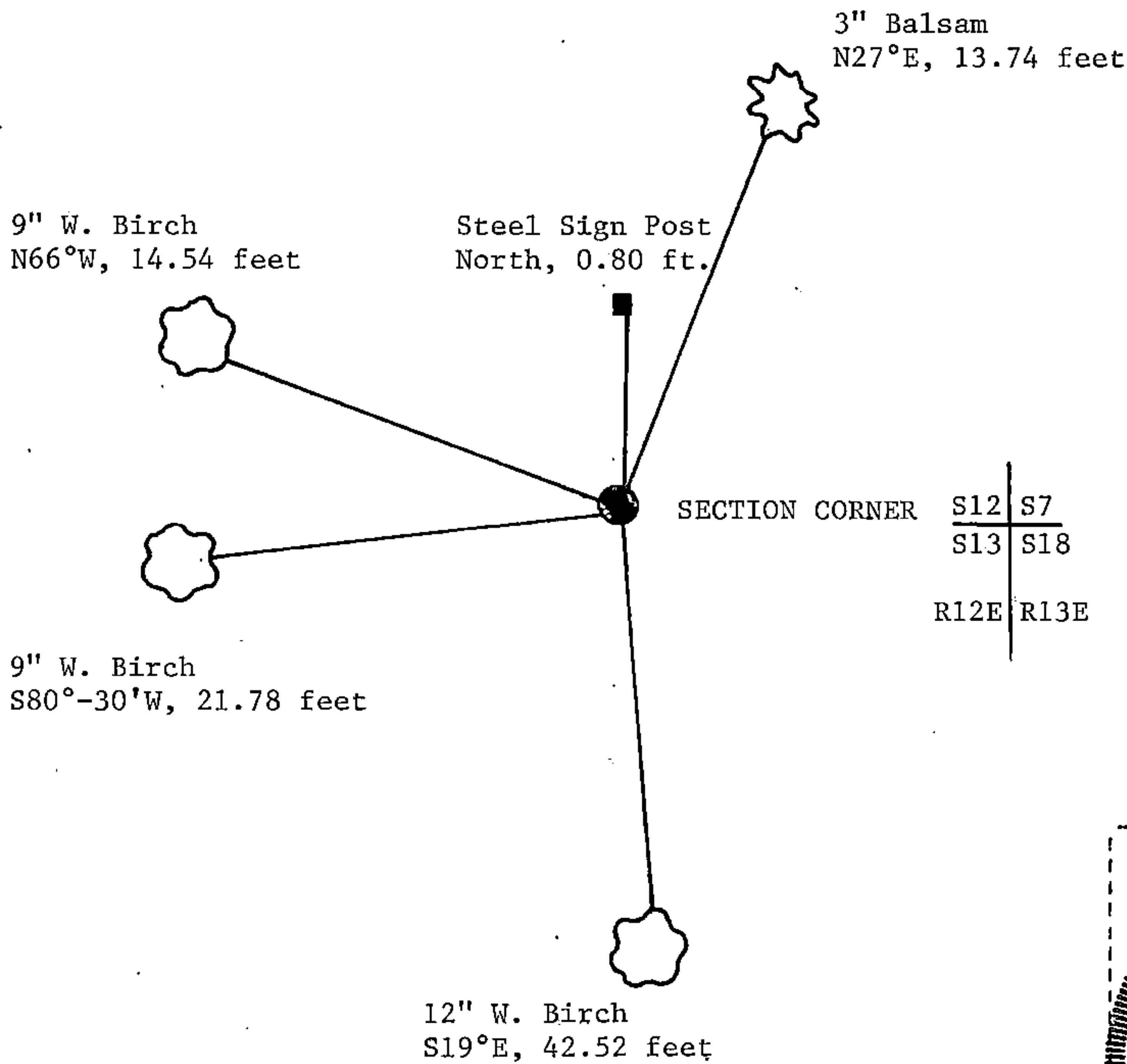
(e) Describe any material discrepancy between the location of the corner as restored or reestablished and the location of that corner as previously restored or reestablished by distance and direction. Show the discrepancy on the plan view drawing under (d), above. Show the distances between the corner as previously restored or reestablished and (1) the corner as restored or reestablished, and (2) to at least 2 of the witness monuments shown on the drawing in (d), above.

None

(f) Was the corner restored through acceptance of (1) an obliterated evidence location, or, (2) a found perpetuated location?

Restored through acceptance of a found perpetuated location.

(g&h) Was the corner reestablished through lost corner proportionate methods? If so, show the method, including the directions and distances to other public land survey corners used as evidence or used for proportioning in determining the corner location?



(i) I, William B. Cochrane
(Type or print name) certify that the corner location shown on this record was determined by me or under my direction and control and that this U.S. Public Land Survey Monument Record is correct and complete to the best of my knowledge and belief.

William B. Cochrane
Signature

1/25/93
Date

Survey requested by; _____
District Ranger Date