

U.S. PUBLIC LAND SURVEY MONUMENT RECORD

Index No. E-3

State of Wisconsin }
County of Forest } ss.

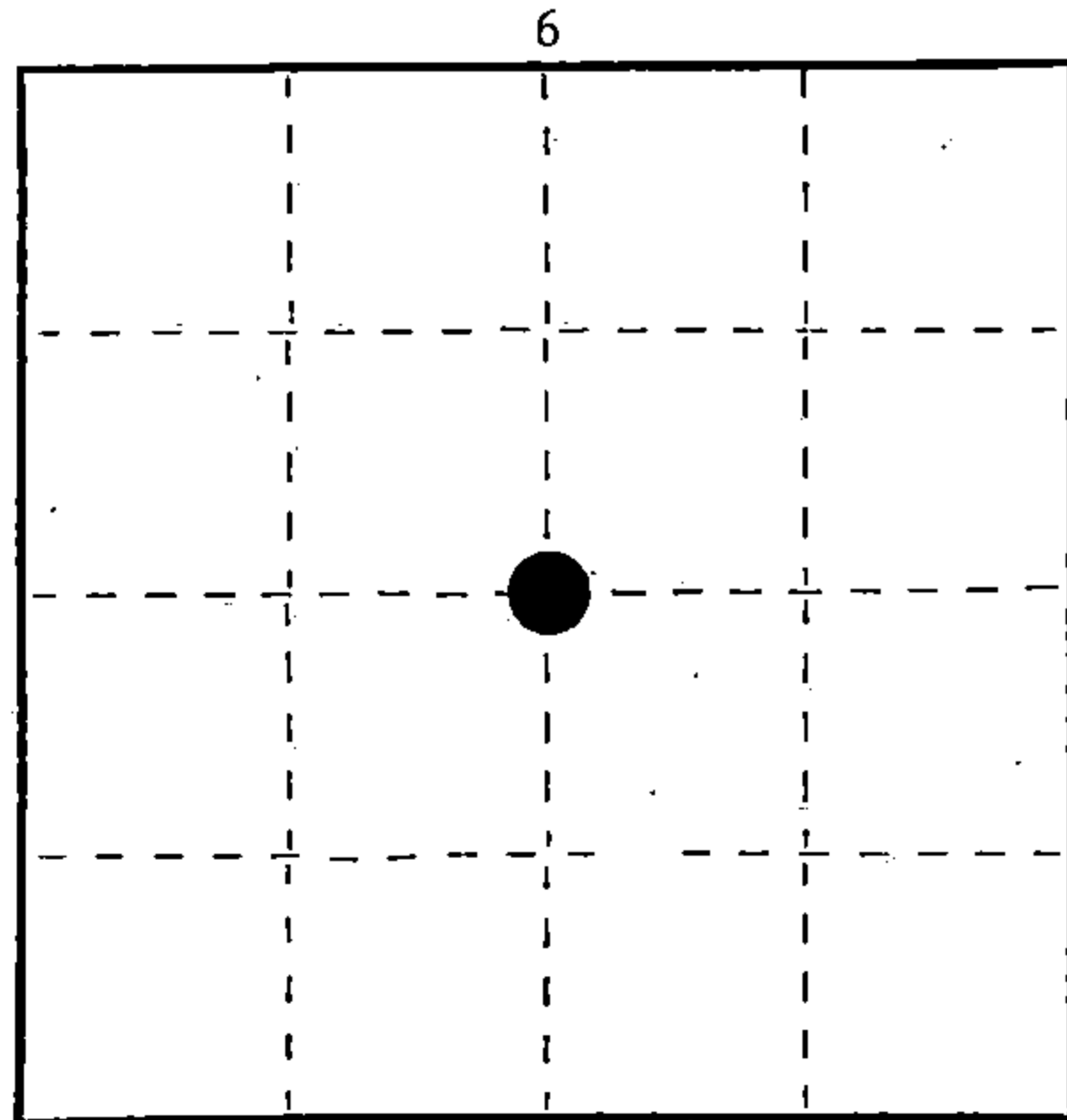
I Milo E. Stefan, do hereby certify that on the 20th day of October, 1988, I found evidence of the Quarter corner of Sections 6 and 7 Township 39 North, Range 12 East, Fourth Principal Meridian, as described hereon; and that from this evidence I established a new monument and accessories as described hereon to perpetuate the original location of this corner.

Resident witnesses:

Myron L. Smith

Jeffrey L. Kennedy

Jeanne M. Stefan



○ = Corner monument restored.

History of original corner establishment:

1859 William Daugherty established this corner.

1939 G.L.O. restored it by lost methods in the dependent resurvey and extension survey of sections 5 and 6.

1967 Jean Resvick maintained corner as set by G.L.O. and made two new BTs:

6" Maple, N51°E, 13.51'

6" White Pine, N38°W, 10.70'

4" x 4" Cedar Post, SE of monument.

Description of corner evidence found:

We found G.L.O. monument in good condition. G.L.O. BTs down or gone. Resvick BTs okay and cedar post okay:

6" Red Maple, N51°E, 13.53'

8" White Pine, N38°W, 10.82'

Cedar Post, Southeast

Certificate filed by Resvick on 2/27/68, Document #94226

Description of monument and accessories I established to perpetuate the original location of this corner.

We made two new BTs, set sign post, placed BT tags and painted accessories to Forest Service standards:

8" White Birch, S24°E, 26.50'

6" Red Maple, S25°W, 26.56'

6' Steel Sign Post, North, 2.2'

Dated at Crandon, Wis., this 15th day of November, 1988.

Signature: *Milo E. Stefan* Title: Land Surveyor Registration No. S-1558
(County Surveyor, Registered Land Surveyor, or other duly authorized official)

Office of Register of Deeds, County of Forest, I hereby certify that the within instrument was filed in this office for record on the 7th day of March, 1989 at 9:55 o'clock A.M.

Paul Aschenbrenner

(Register of Deeds)

By: *Sandra L. Neddo* Deputy

FORM NO. 985-A

H.C. Miller Company

Stock No. 26273

DOCUMENT NUMBER

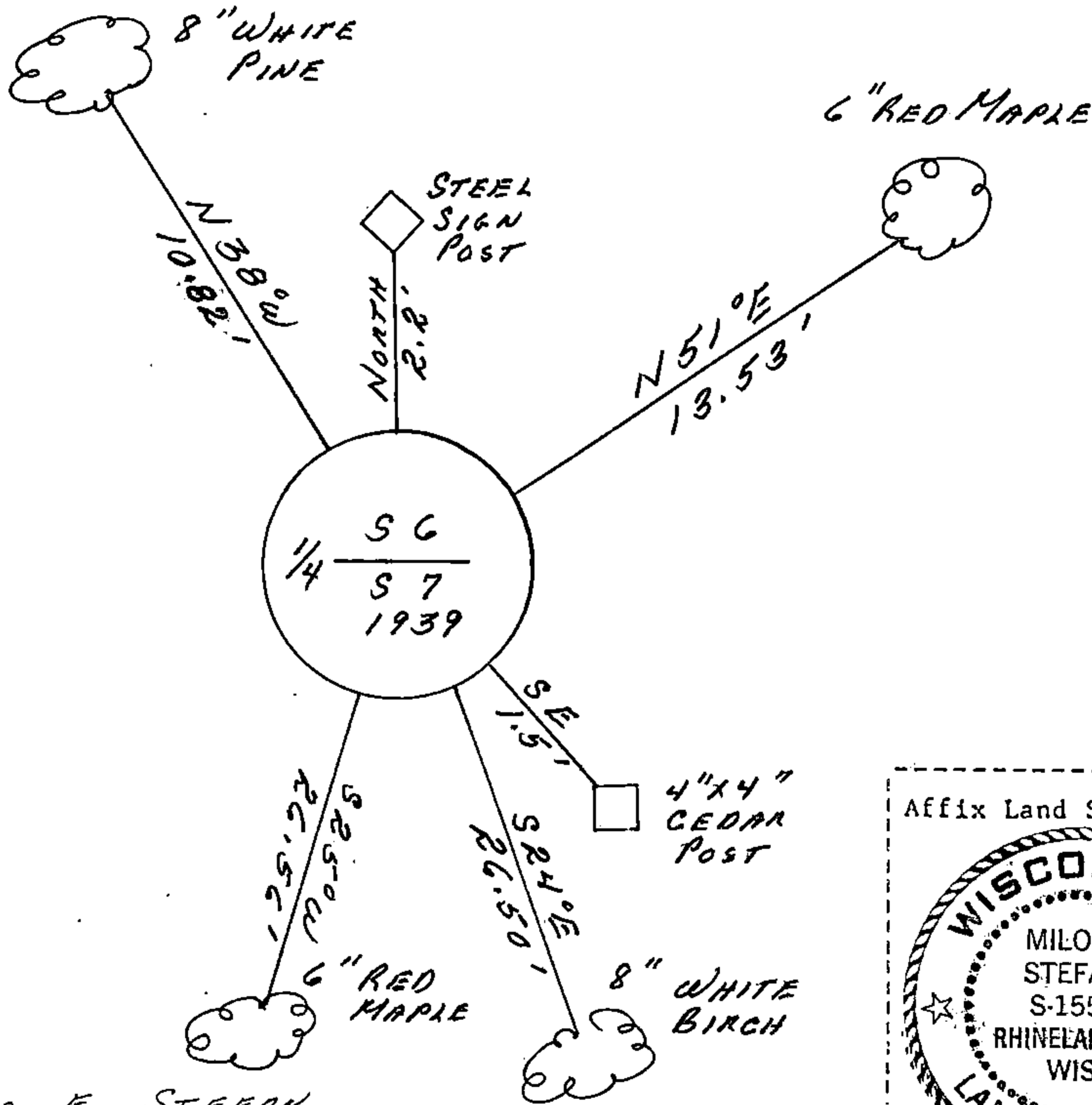
137019

43912060020

(e) Describe any material discrepancy between the location of the corner as restored or reestablished and the location of that corner as previously restored or reestablished by distance and direction. Show the discrepancy on the plan view drawing under (d), above. Show the distances between the corner as previously restored or reestablished and (1) the corner as restored or reestablished, and (2) to at least 2 of the witness monuments shown on the drawing in (d), above.

(f) Was the corner restored through acceptance of (1) an obliterated evidence location, or, (2) a found perpetuated location?
 2) found a restored 1939 GLO position.

(g&h) Was the corner reestablished through lost corner proportionate methods? If so, show the method, including the directions and distances to other public land survey corners used as evidence or used for proportioning in determining the corner location?



(i) I, MILO E. STEFAN
 (type or print name) certify that the corner location shown on this record was determined by me or under my direction and control and that this U.S. Public Land Survey Monument Record is correct and complete to the best of my knowledge and belief.

Milo E. Stefan
 Signature

10/31/88
 Date

Certificate ready for filing: Camille Spork
 District Ranger