

U.S. PUBLIC LAND SURVEY MONUMENT RECORD

Index No. C-6

State of Wisconsin }
County of Forest } ss.

I, Milo E. Stefan, do hereby certify that on the 5th day of January, 1989, I found evidence of the CW 1/16 corner of Section 5 Township 39 North, Range 12 East, Fourth Principal Meridian, as described hereon; and that from this evidence I established a new monument and accessories as described hereon to perpetuate the original location of this corner.

Resident witnesses:

Myron L. Smith

History of original corner establishment:

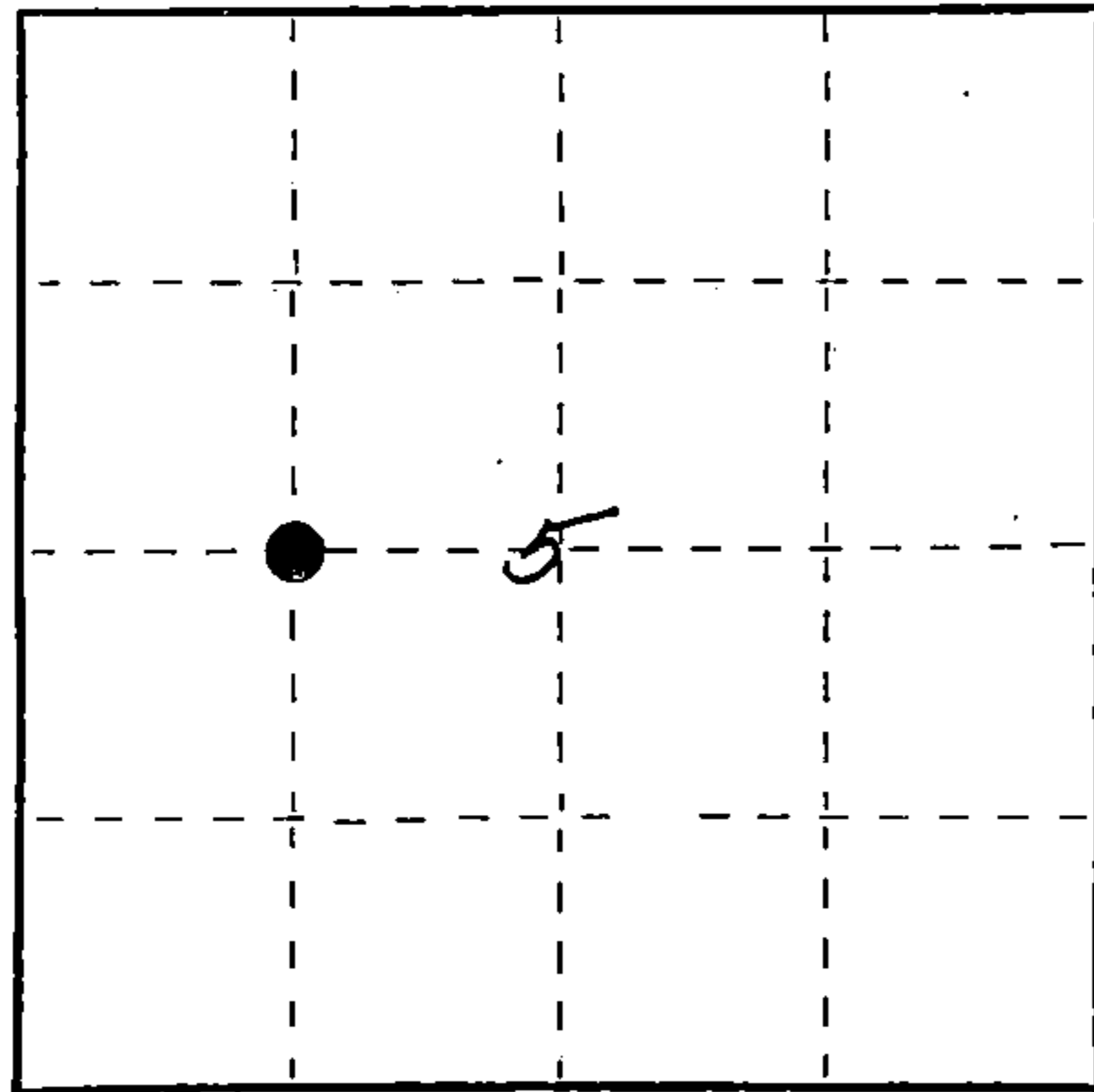
Corner was established by GLO during the Extension Survey in 1939. Corner position established at mid-point between the Center Quarter and West Quarter to Section 5. GLO placed a 1" x 36" iron post with Brass Cap:
9" Hemlock, S26°E, 58 links
8" Maple, N68°W, 30 links

Description of corner evidence found:

GLO monument bent over to ground level.
10" Hemlock fallen and decayed, S26°E, 38.3'
12" Sugar Maple stump (recently cut) N68°W, 19.8'

Description of monument and accessories I established to perpetuate the original location of this corner.

- 1) Straighten bent GLO monument and reset same.
- 2) 8" Sugar Maple, S86°E, 4.58'
- 3) 13" Hemlock, N2°W, 73.98'
- 4) 6' Steel Sign Post, North, 0.2'



● = Corner monument restored.

Dated at Crandon, Wis., this 9th day of January, 1989.

Signature Milo E. Stefan Title Land Surveyor Registration No. 1558
(County Surveyor, Registered Land Surveyor, or other duly authorized official)

Office of Register of Deeds, County of Forest, I hereby certify that the within instrument was filed in this office for record on the 7th day of March, 1989 at 9:55 o'clock A. M.

Paul Aschenbrenner
(Register of Deeds)

By Sandra L. Heddo Deputy

FORM NO. 985-A

H.C. Miller Company

Stock No. 26273

DOCUMENT NUMBER

13701A

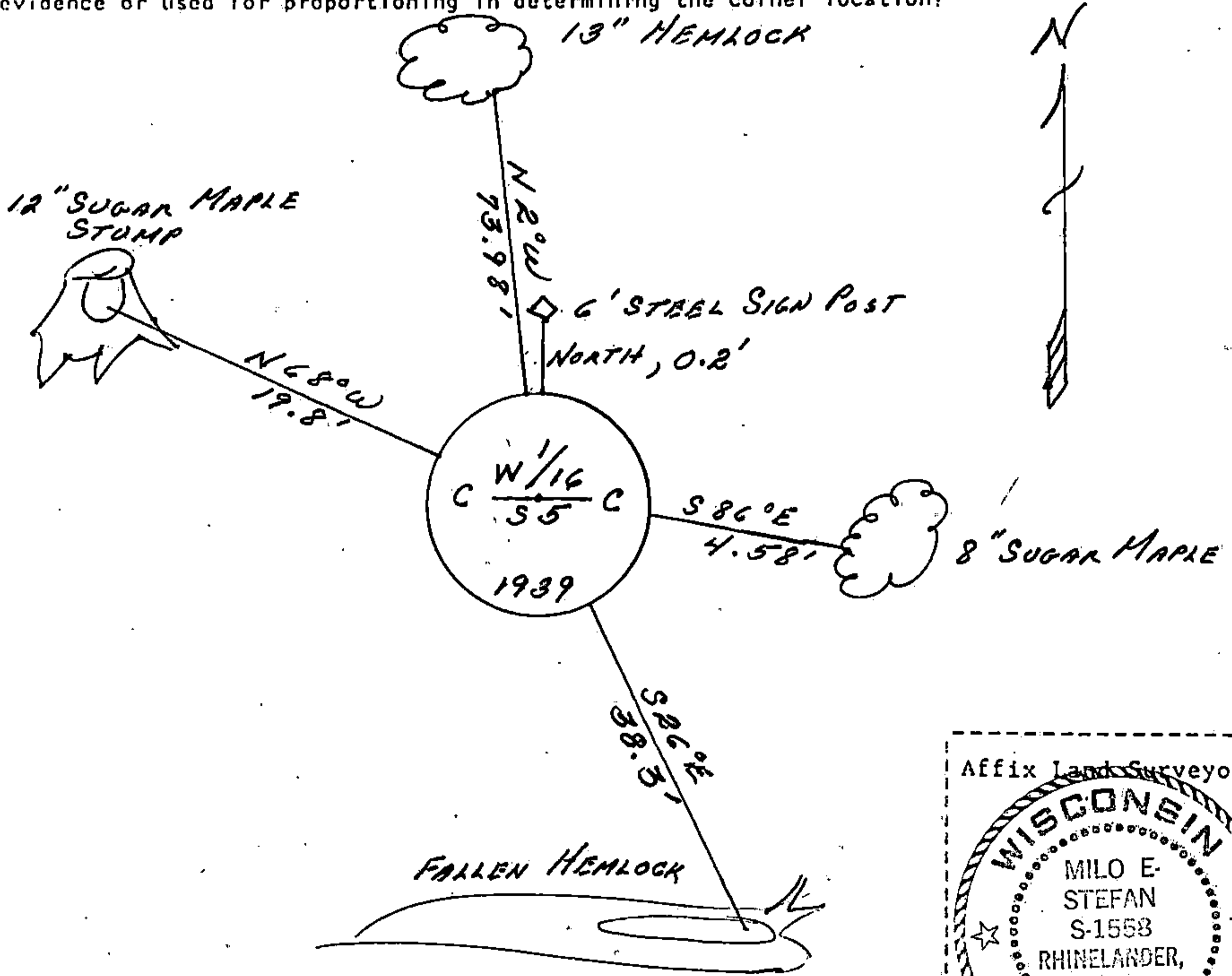
43912052030

(e) Describe any material discrepancy between the location of the corner as restored or reestablished and the location of that corner as previously restored or reestablished by distance and direction. Show the discrepancy on the plan view drawing under (d), above. Show the distances between the corner as previously restored or reestablished and (1) the corner as restored or reestablished, and (2) to at least 2 of the witness monuments shown on the drawing in (d), above.

(f) Was the corner restored through acceptance of (1) an obliterated evidence location, or, (2) a found perpetuated location?

2) a found position.

(g&h) Was the corner reestablished through lost corner proportionate methods? If so, show the method, including the directions and distances to other public land survey corners used as evidence or used for proportioning in determining the corner location?



(i) I, Milo E. Stefan
 (type or print name) certify that the corner location shown on this record was determined by me or under my direction and control and that this U.S. Public Land Survey Monument Record is correct and complete to the best of my knowledge and belief.

Milo E. Stefan
 Signature

1/9/89
 Date

Survey requested by; Pamela Syardue 2/27/89
 District Ranger Date

Date of Survey; 1988