

U.S. PUBLIC LAND SURVEY MONUMENT RECORD

Index No. C-7

State of Wisconsin }  
County of Forest } ss.

I, Gary L. Pisoni, do hereby certify that on the 18th day of December, 1986, I found evidence of the Center Quarter corner of Section 5, Township 39 North, Range 12E, Fourth Principal Meridian, as described hereon; and that from this evidence I established a new monument and accessories as described hereon to perpetuate the original location of this corner.

Resident witnesses:

Mark Selmo

Arnold Townsend

History of original corner establishment:

1939 Dependent resurvey.

Set a 1 inch diameter by 36 inch long iron pipe with a brass cap, 8 inches above ground surface, stamped as follows: U.S. General Land Office Survey, C 1/4, S5, 1939 from which the following bear:

Maple 5" S.89°E. 29 links  
Maple 6" N.49°30'W. 70 links

Description of corner evidence found:

Monument as described and in place, from which the following bear:

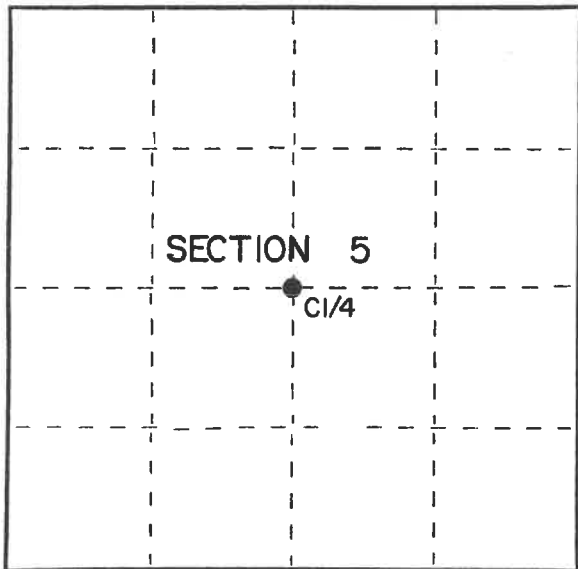
Maple 12" S.85°E. 19.14 feet

Description of monument and accessories I established to perpetuate the original location of this corner.

Blazed and scribed the following new bearing trees:

Sugar Maple 6" S.37°W. 27.61 feet  
Sugar Maple 6" N.48°W. 23.79 feet

Set a steel sign post N.20°E. 0.90 feet



○ = Corner monument restored.

Dated at Iron River, MI, Wis, this 3rd day of November, 1987

Signature Gary L. Pisoni Title Land Surveyor Registration No. S-1634  
(County Surveyor, Registered Land Surveyor, or other duly authorized official)

Office of Register of Deeds, County of Forest, I hereby certify that the within instrument was filed in this office for record on the 5th day of February, 1988 at 12:45 o'clock P. M.

Paul Archambault  
(Register of Deeds)

By Deputy

FORM NO. 985-A



Stock No. 26273

DOCUMENT NUMBER 134608

43912052420

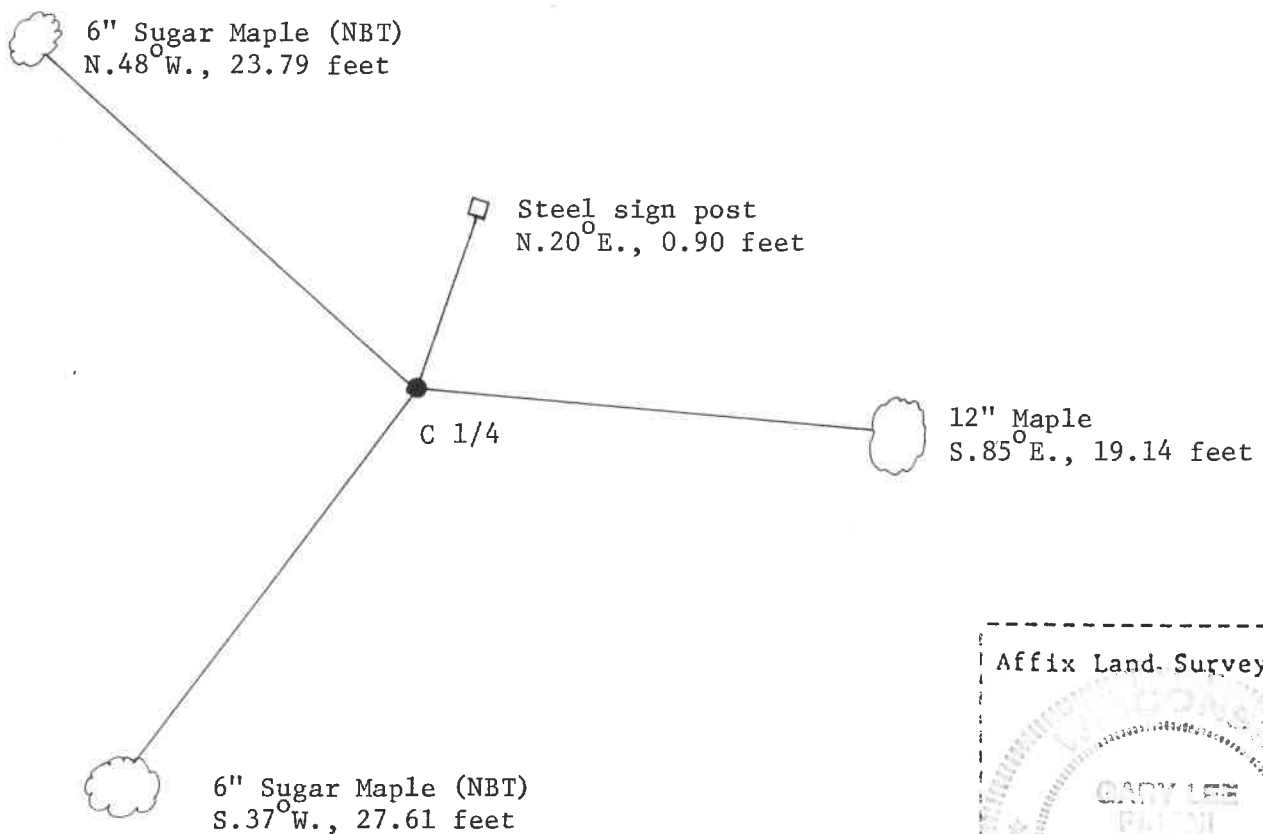
(e) Describe any material discrepancy between the location of the corner as restored or reestablished and the location of that corner as previously restored or reestablished by distance and direction. Show the discrepancy on the plan view drawing under (d), above. Show the distances between the corner as previously restored or reestablished and (1) the corner as restored or reestablished, and (2) to at least 2 of the witness monuments shown on the drawing in (d), above.

See drawing below.

(f) Was the corner restored through acceptance of (1) an obliterated evidence location, or, (2) a found perpetuated location?

Restored through acceptance of a found perpetuated location.

(g&h) Was the corner reestablished through lost corner proportionate methods? If so, show the method, including the directions and distances to other public land survey corners used as evidence or used for proportioning in determining the corner location?



(i) I, Gary L. Pisoni  
 (type or print name) certify that the corner location shown on this record was determined by me or under my direction and control and that this U.S. Public Land Survey Monument Record is correct and complete to the best of my knowledge and belief.

Gary L. Pisoni Signature Nov 3rd 1987 Date

Survey requested by: [Signature] District Ranger 2/2/88 Date