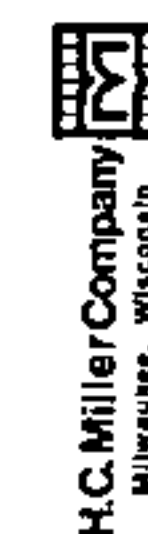


Stock No. 26272

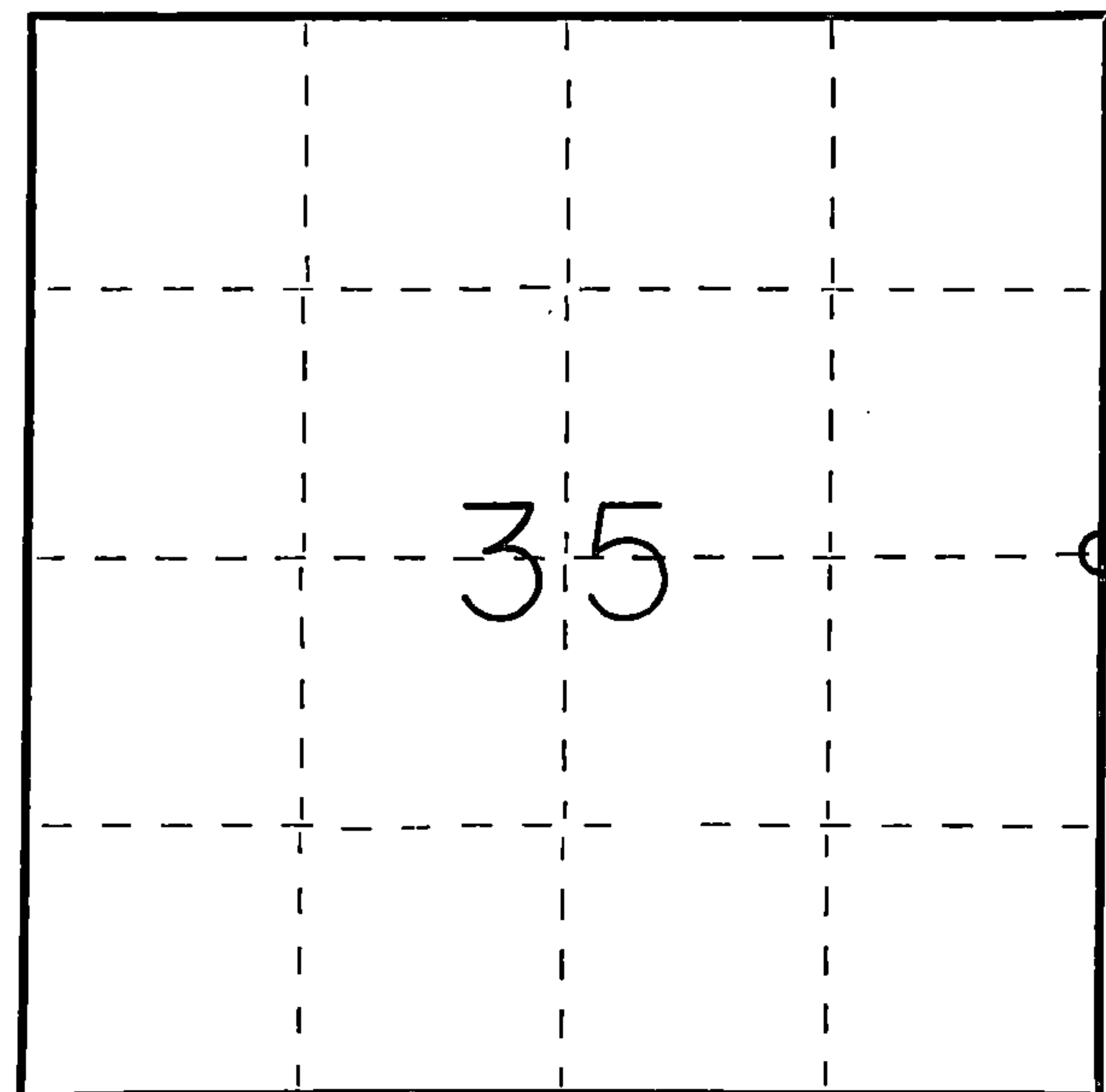


FORM 985

State of Wisconsin }
County of Forest } ss.

I, Norman A. Harrison, do hereby
certify that on the 7th day
of December, 1982, I found ~~sett~~
~~evidence of the~~ East quarter
corner of Section 35
Township 38, North, Range
14 East, Fourth Principal Meridian,
as described hereon; and that ~~from this evidence~~
I established a new monument and accessories
as described hereon to perpetuate the original
location of this corner.

Resident witnesses:



○ = Corner monument restored.

CERTIFIED LAND CORNER RESTORATION

U.S. Public Land Corner

History of original corner establishment: Township 38 North, Range 14 East subdivided by:
James L. Nowlin, Deputy Surveyor Commenced Aug. 30, 1865
Completed Sept. 9, 1865

Original bearing trees

Sugar	24"	S 84° W	10 lks
Ironwood	8"	N 59° E	12 lks

Description of corner evidence found: No evidence of original corner found

Restablished the Northeast corner and the Southeast corner of the
section and set corner by proportionate measure.

Description of monument and accessories I established to perpetuate the original location of this corner.

Set corner by porprotionate measure.

Set Forest County aluminum monument at corner in the shoulder of road 0.5' below
ground surface. April 25, 1983

Bearing trees or objects, magnetic bearings

Maple	11"	on east side of road, N 64° 00' E	93.8'
Yellow birch	9"	on east side of road, S 85° 54' E	62.1'
Culvert, CMP	24"	center and top S 5° 28' W	100.35'
Iron pipe	1 1/2"	S 89° 18' W	43.52'
Bituminus pavement		Easterly	4.9'

Dated at Fence, Wis., this 5th day of May, 1983.

Signature Norman A. Harrison Title Surveyor Registration No. 1394
(County Surveyor, Registered Land Surveyor, or other duly authorized official)

Office of Register of Deeds, County of Forest, I hereby certify that the within
instrument was filed in this office for record on the 5th day of May, 1983
at 4:30 o'clock P. M.

Eugene Stateroy
(Register of Deeds)

By _____ Deputy

DOCUMENT NO. **123319**



43814352000

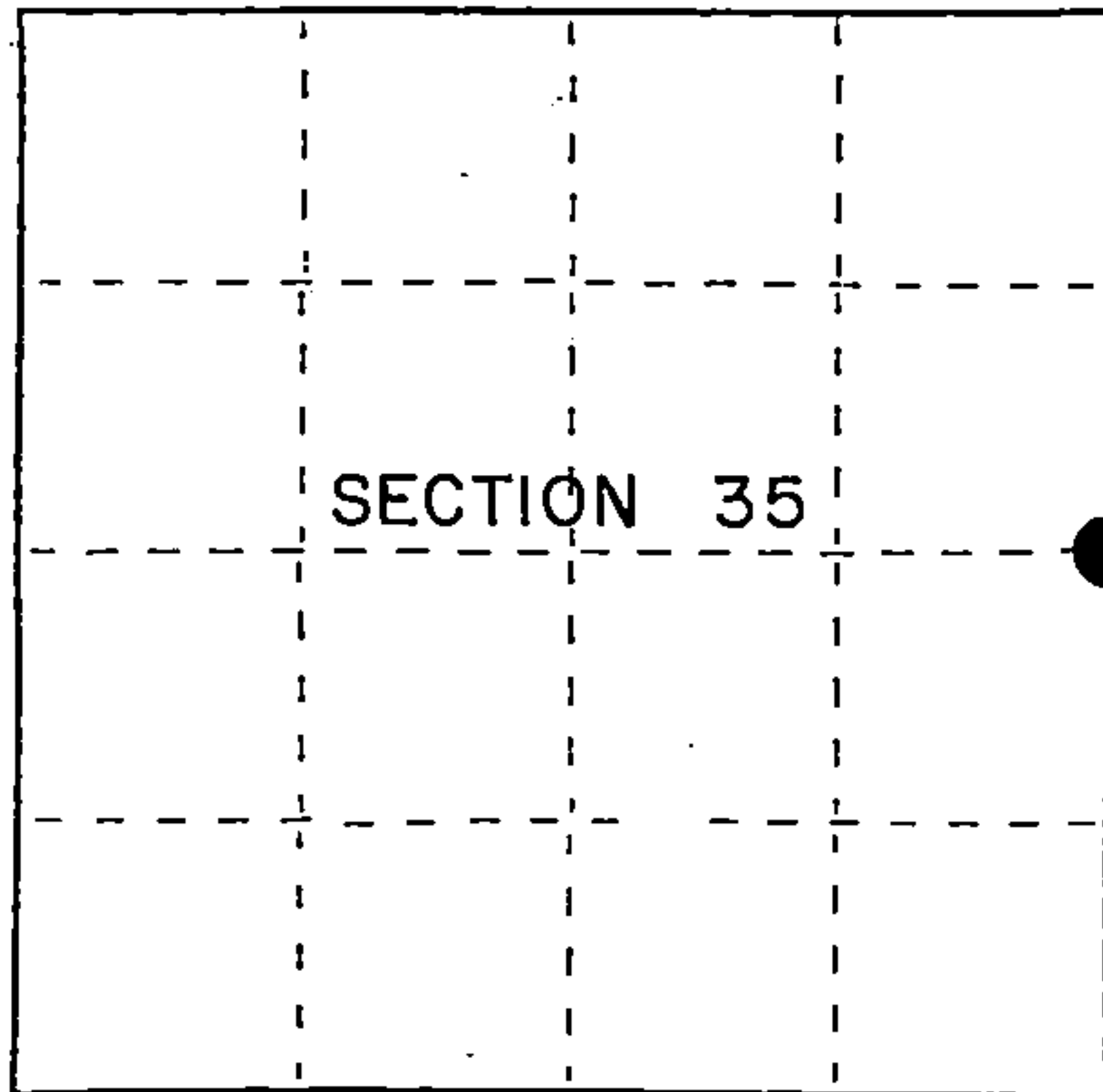
U.S. PUBLIC LAND SURVEY MONUMENT RECORD

Index No. X-21

State of Wisconsin }
County of Forest } ss.

I, Gary L. Pisoni, do hereby
certify that on the 7th day
of March, 1994, I found
evidence of the East Quarter
corner of Section 35
Township 38, North, Range
14 East, Fourth Principal Meridian,
as described hereon; and that from this evidence
I established a new monument and accessories
as described hereon to perpetuate the original
location of this corner.

Resident witnesses:



● = Corner monument restored.

History of original corner establishment:
Original Government Survey in 1865 by H. & J.L. Nowlin. At 40.00 chains, set Quarter
Section Post, from which the following bear; Sugar, 26", S08°W, 10 lks., Ironwood, 8",
N59°E, 12 lks.

In 1983, William Cochrane, RLS, with the U.S. Forest Service restored the corner position
using State Hwy Plans. Corner position falls in Hwy 139. At the corner position set a
2½" x 36" Aluminum Monument with an aluminum cap stamped to identify the corner. Blazed and
scribed the following new bearing trees; Red Pine 9" S82°W 35.00 feet
Red Pine 9" N79°W 34.25 feet

Description of corner evidence found:

Forest County Monument bears North, 8.52 feet

Found monument and bearing trees as described above.

Red Pine	9"	S82°W	35.60 feet
Red Pine	9"	N79°W	34.25 feet
Forest County Monument		North	8.52 feet

Description of monument and accessories I established to perpetuate the original location of this corner.

Blazed and scribed a new bearing tree; (Measurement is taken to a nail in side of tree)

Red Pine	10"	N38°W	54.75 feet
Steel Sign Post		West	27.22 feet

Dated at Iron River, MI, Wis., this 5th day of March, 1995

Signature Gary L. Pisoni Title Land Surveyor Registration No. S-1634
(County Surveyor, Registered Land Surveyor, or other duly authorized official)

Office of Register of Deeds, County of Forest, I hereby certify that the within
instrument was filed in this office for record on the 20th day of March, 1997
at 1:30 o'clock P M.

(Register of Deeds)

By John Tomlinson Deputy

FORM NO. 985-A

H.C. Miller Company

Stock No. 26273

158153

43814352000

- e) Describe any material discrepancy between the location of the corner as restored or reestablished and the location of that corner as previously restored or reestablished by distance and direction. Show the discrepancy on the plan view drawing under (d), above. Show the distances between the corner as previously restored or reestablished and (1) the corner as restored or reestablished, and (2) to at least 2 of the witness monuments shown on the drawing in (d), above.

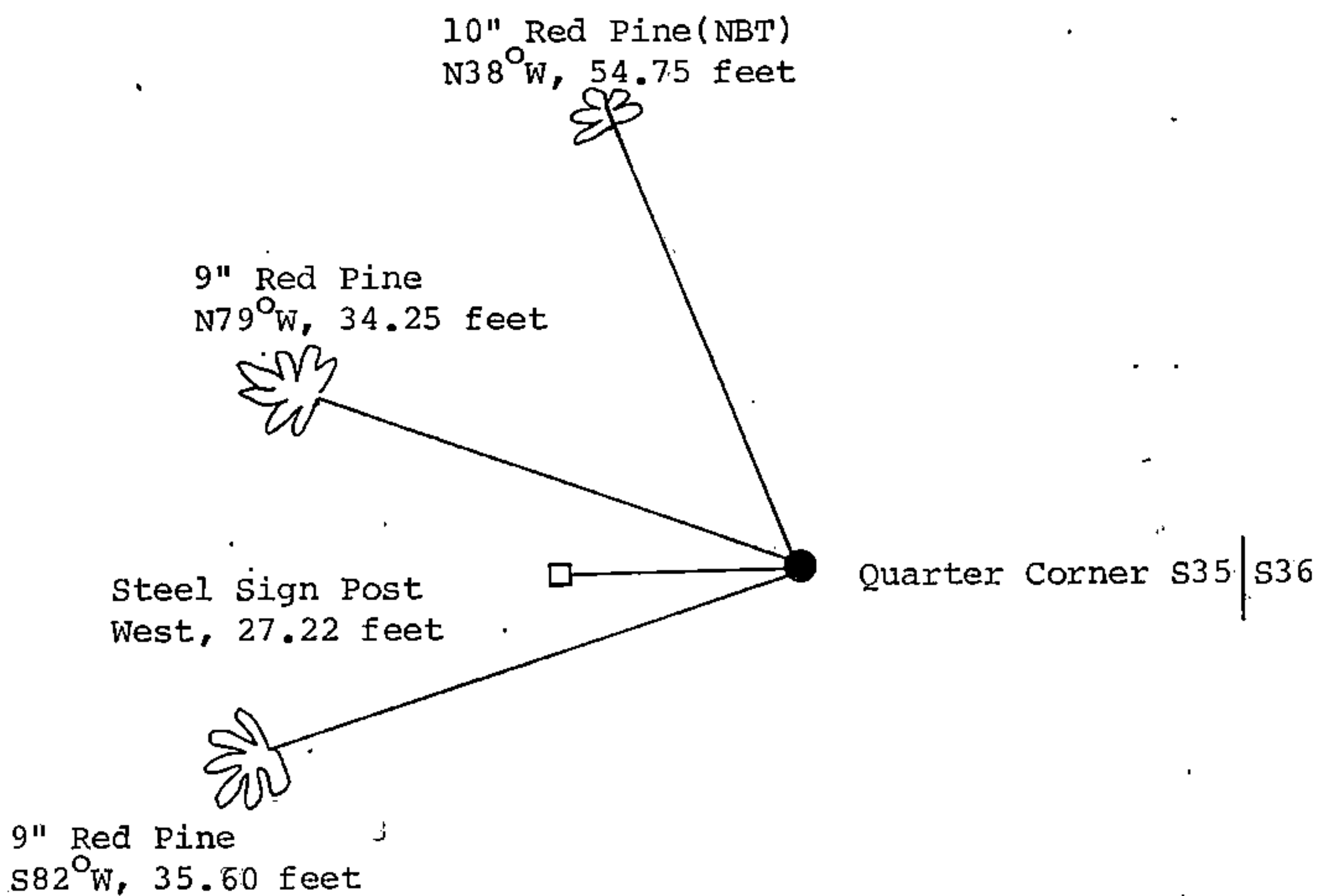
None

- (f) Was the corner restored through acceptance of (1) an obliterated evidence location, or, (2) a found perpetuated location?

Restored through acceptance of a found perpetuated location.

- (g&h) Was the corner reestablished through lost corner proportionate methods? If so, show the method, including the directions and distances to other public land survey corners used as evidence or used for proportioning in determining the corner location?

No



- (i) I, Gary L. Pisoni
(type or print name) certify that the corner location shown on this record was determined by me or under my direction and control and that this U.S. Public Land Survey Monument Record is correct and complete to the best of my knowledge and belief.

Signature

Date

4-11-95

U.S. PUBLIC LAND SURVEY MONUMENT RECORD

Index No. **X-21**

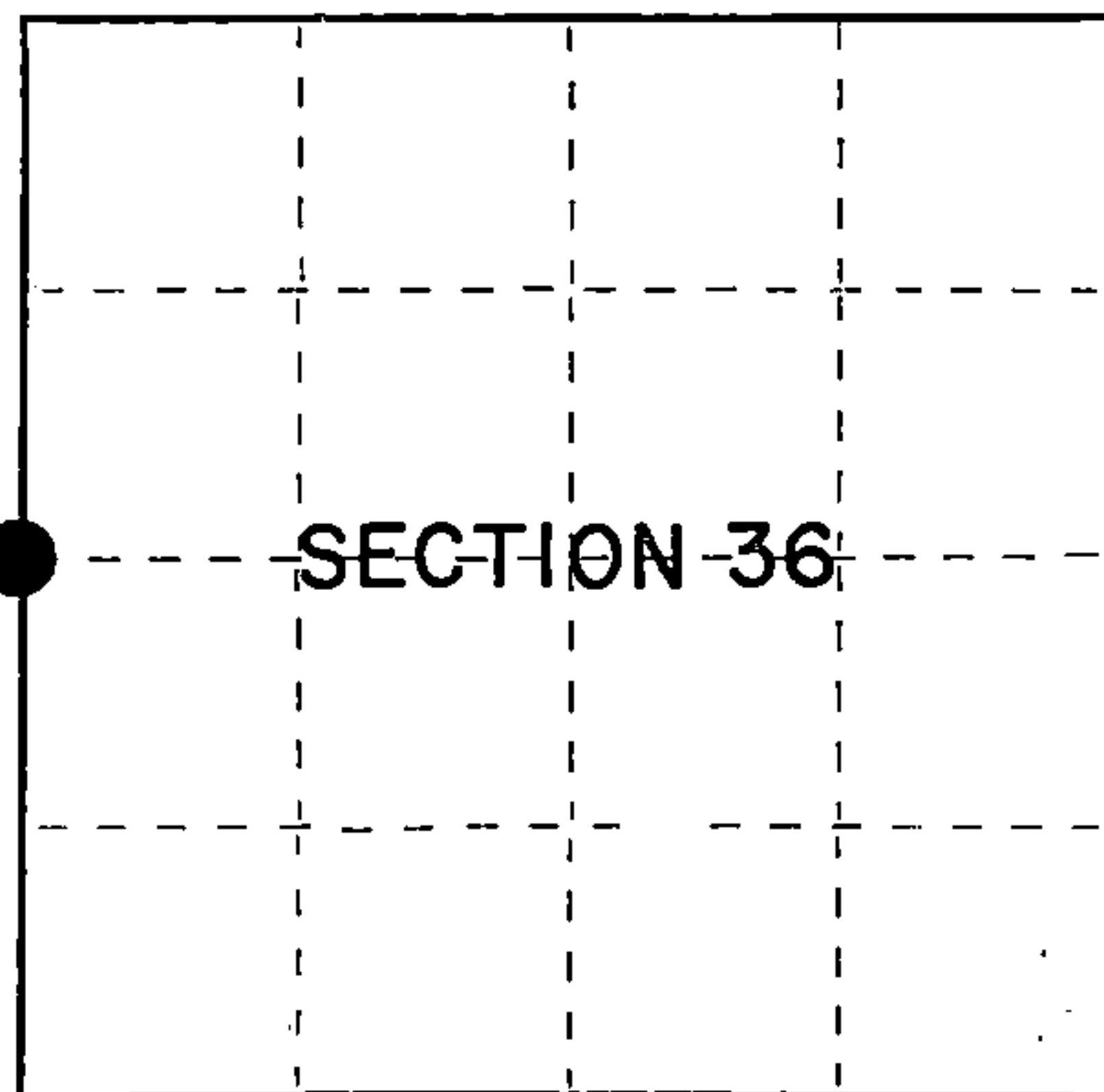
State of Wisconsin }
County of Forest } ss.

I, William B. Cochrane, do hereby
certify that on the 26th day
of September, 1983, I found
evidence of the West Quarter
corner of Section 36
Township 38, North, Range
14 East, Fourth Principal Meridian,
as described hereon; and that from this evidence
I established a new monument and accessories
as described hereon to perpetuate the original
location of this corner.

Resident witnesses:

David Brownell

Tony Tillman



○ = Corner monument restored.

History of original corner establishment:

Original Government Survey in 1865 by H.&J.L. Nowlin. North between Sections 35 and 36,
40.00 chains, set Quarter Corner post, to Sections 35 and 36, from which the following bear:

Sugar	26"	S 8°W	10 lks.
Ironwood	8"	N59°E	12 lks.

Description of corner evidence found:

No original corner evidence was recovered.

Corner position falls in Hwy 139, and was restored using the measurements as shown
on the State Highway Division Job #7115. Plan dated 9/2/47.

Forest County aluminum pipe monument bears, N00°01'06"W, 8.52 feet

Description of monument and accessories I established to perpetuate the original location of this corner.

At the restored corner position, set a 2½" diameter aluminum pipe monument, 3 feet long,
3½ feet in the ground, with an aluminum cap stamped: T38N R14E, 1/4, S35, S36, 1983, S-1107.
From which the following new blazed and scribed bearing trees bear:

R. Pine	9"	S82°W	35.00 feet
R. Pine	9"	N79°W	34.25 feet

Dated at Hiles, Wis., this 26th day of March, 1985

Signature William B. Cochrane Title Land Surveyor Registration No. S-1107
(County Surveyor, Registered Land Surveyor, or other duly authorized official)

Office of Register of Deeds, County of Forest, I hereby certify that the within
instrument was filed in this office for record on the 24th day of April, 1985
at 1:00 o'clock P. M.

Paul Aschenbrenner
(Register of Deeds)

By _____ Deputy

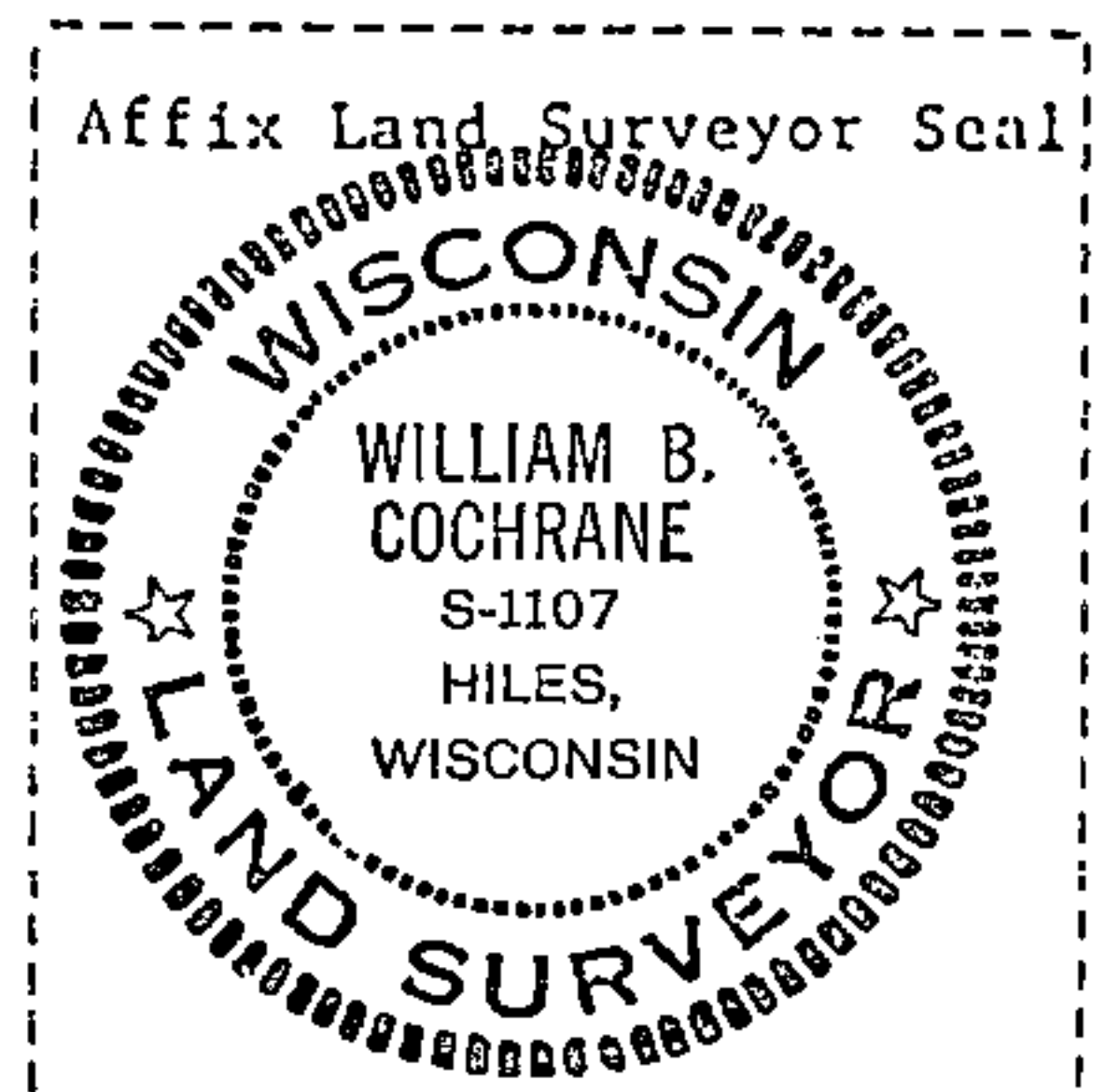
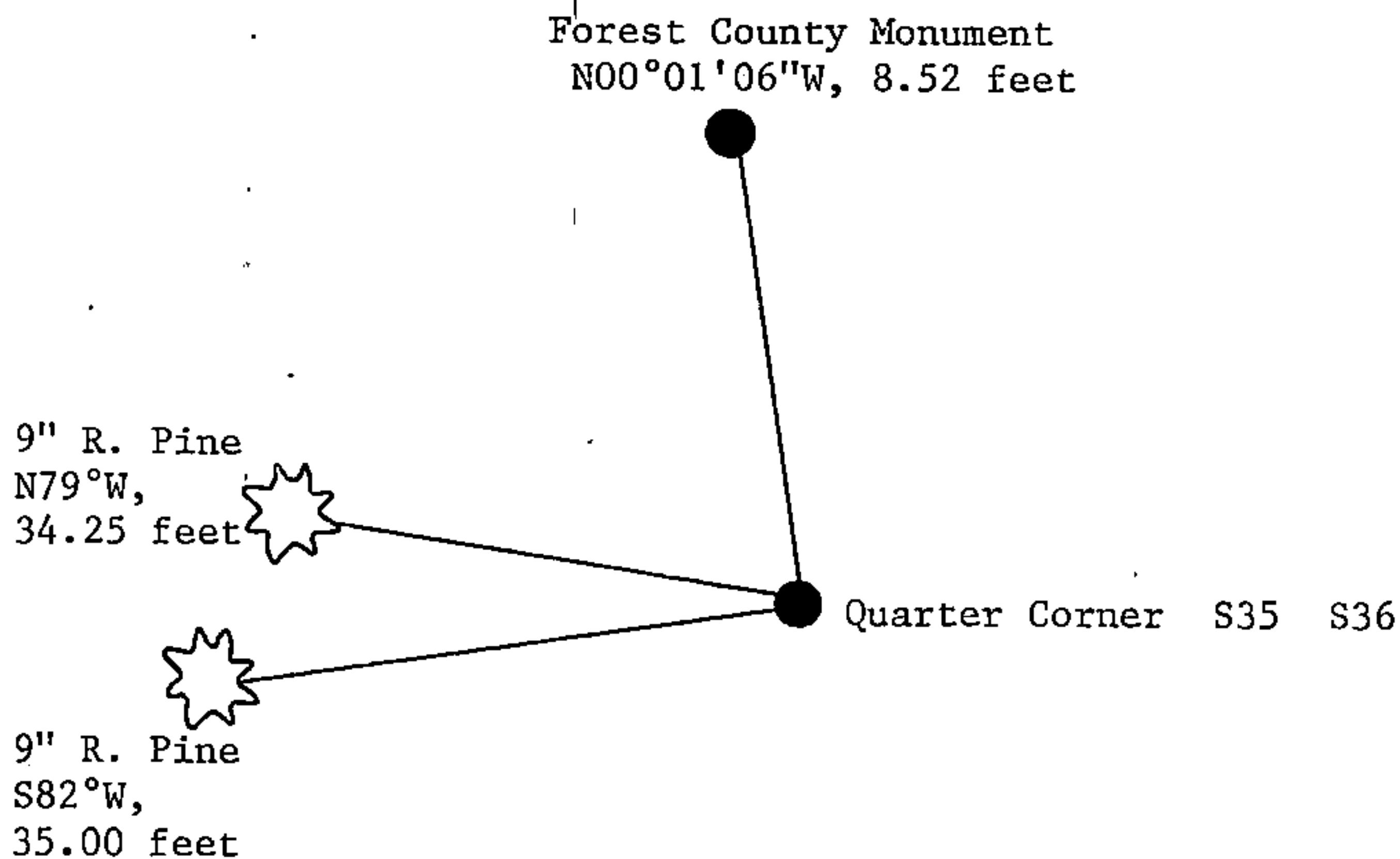
- (e) Describe any material discrepancy between the location of the corner as restored or reestablished and the location of that corner as previously restored or reestablished by distance and direction. Show the discrepancy on the plan view drawing under (d), above. Show the distances between the corner as previously restored or reestablished and (1) the corner as restored or reestablished, and (2) to at least 2 of the witness monuments shown on the drawing in (d), above.

See drawing below.

- (f) Was the corner restored through acceptance of (1) an obliterated evidence location, or, (2) a found perpetuated location?

Restored from accepted evidence.

- (g&h) Was the corner reestablished through lost corner proportionate methods? If so, show the method, including the directions and distances to other public land survey corners used as evidence or used for proportioning in determining the corner location?



- (i) I, William B. Cochrane
(type or print name) certify that the corner location shown on this record was determined by me or under my direction and control and that this U.S. Public Land Survey Monument Record is correct and complete to the best of my knowledge and belief.

William B. Cochrane
Signature

March 26, 1985
Date