

U.S. PUBLIC LAND SURVEY MONUMENT RECORD

Index No. Z-21

State of Wisconsin }
County of Forest } ss.

I, Gary L. Pisoni, do hereby certify that on the 7th day of March, 1994, I found evidence of the Southeast Section corner of Section 35 Township 38 North, Range 14 East, Fourth Principal Meridian, as described hereon; and that from this evidence I established a new monument and accessories as described hereon to perpetuate the original location of this corner.

Resident witnesses:
.....
.....
.....

History of original corner establishment:
Original Government Survey in 1857 by Alfred Millard.

In 1983, William Cochrane, a Land Surveyor with the Forest Service, found a 2 1/2 inch diameter aluminum pipe monument, with a cap stamped; T38N, R14E, S1, S2, S35, S36, T37N, S-1394, Forest County. Also found the following bearing trees; Maple, 18", N54°E, 91.85 feet, Maple, 14", N74°W, 17.14 feet. This monument fits the State Hwy Plans and the Chicago-Northwestern Railway Plan.

Cochrane blazed and scribed a new bearing tree; Maple 5" S35°E 67.75 feet
Steel Sign Post West 0.50 feet

Description of corner evidence found:

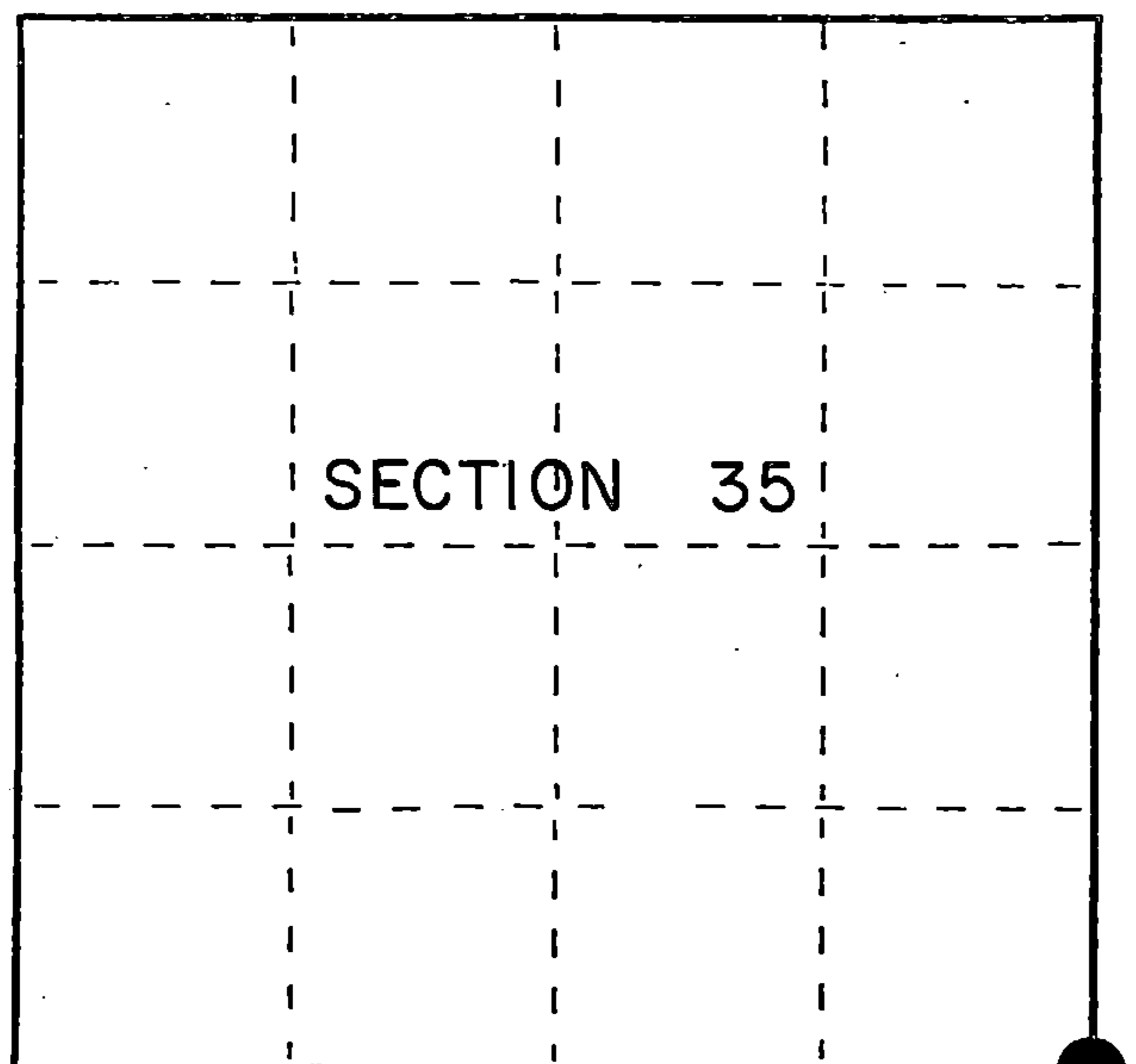
Found the monument as described above and the following bearing trees;

Red Maple	18"	N55°E	91.86 feet
Red Maple	14"	N65°W	17.12 feet
Red Maple	5"	S34°E	67.81 feet
Steel Sign Post		West	0.44 feet

Description of monument and accessories I established to perpetuate the original location of this corner.

Blazed and scribed a new bearing tree: (Measurement is taken to a nail in side of tree)

Red Maple	11"	S56°W	15.03 feet
-----------	-----	-------	------------



○ = Corner monument restored.

Dated at Iron River, MI, Wis, this 5th day of May, 1994

Signature: Gary L. Pisoni Title: Land Surveyor Registration No. S-1634
(County Surveyor, Registered Land Surveyor, or other duly authorized official)

Office of Register of Deeds, County of Forest, I hereby certify that the within instrument was filed in this office for record on the 20th day of March, 1997 at 1:30 o'clock P.M.

(Register of Deeds)
By: [Signature] Deputy

FORM NO. 985-A
H.C. Miller Company
MILWAUKEE, WISCONSIN

Stock No. 26273

158161

4281435000

(e) Describe any material discrepancy between the location of the corner as restored or reestablished and the location of that corner as previously restored or reestablished by distance and direction. Show the discrepancy on the plan view drawing under (d), above. Show the distances between the corner as previously restored or reestablished and (1) the corner as restored or reestablished, and (2) to at least 2 of the witness monuments shown on the drawing in (d), above.

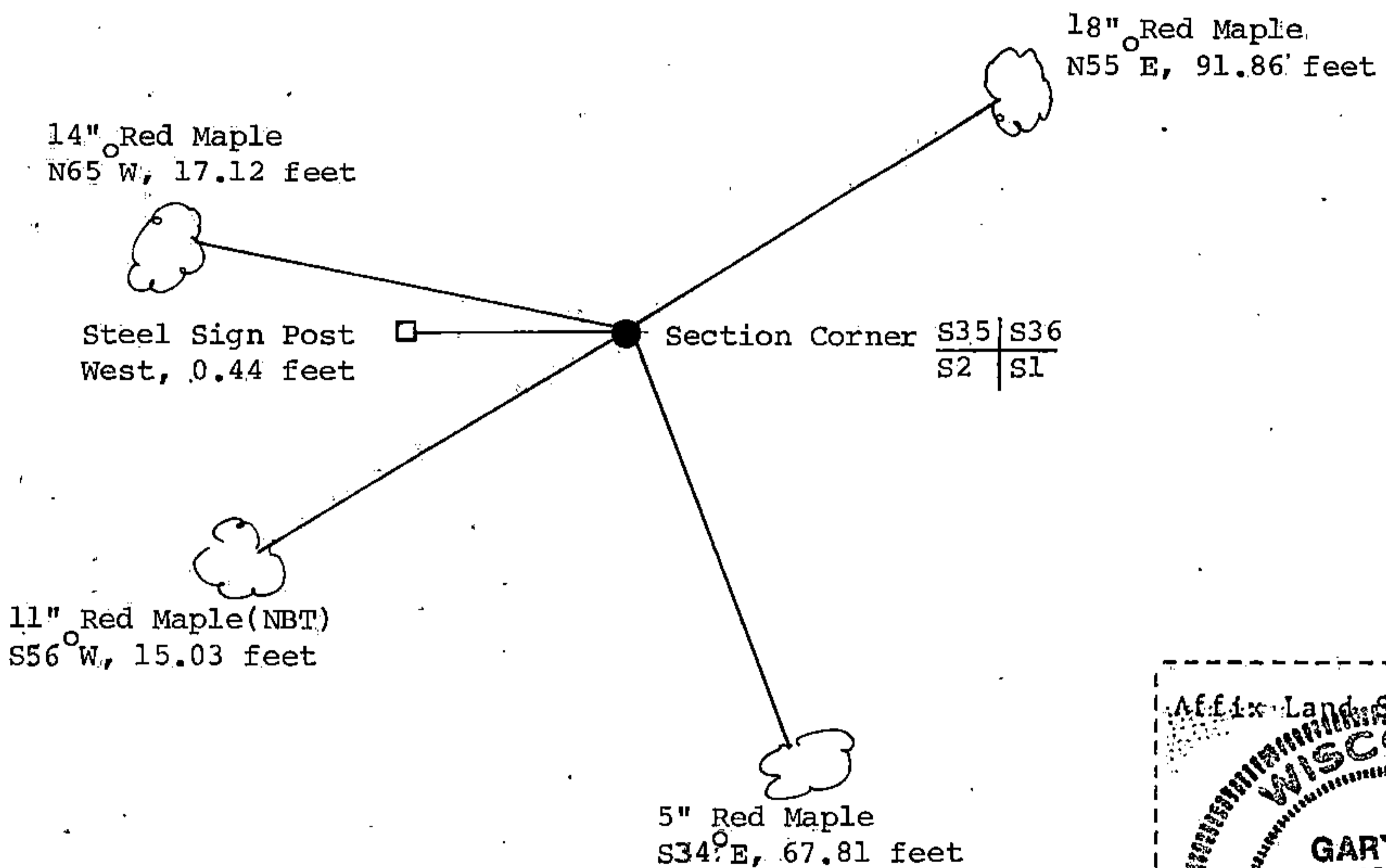
None

(f) Was the corner restored through acceptance of (1) an obliterated evidence location, or, (2) a found perpetuated location?

Restored through acceptance of a found perpetuated location.

(g&h) Was the corner reestablished through lost corner proportionate methods? If so, show the method, including the directions and distances to other public land survey corners used as evidence or used for proportioning in determining the corner location?

No



(i) Gary L. Pisoni
 (type or print name) certify that the corner location shown on this record was determined by me or under my direction and control and that this U.S. Public Land Survey Monument Record is correct and complete to the best of my knowledge and belief.

Gary L. Pisoni
 Signature

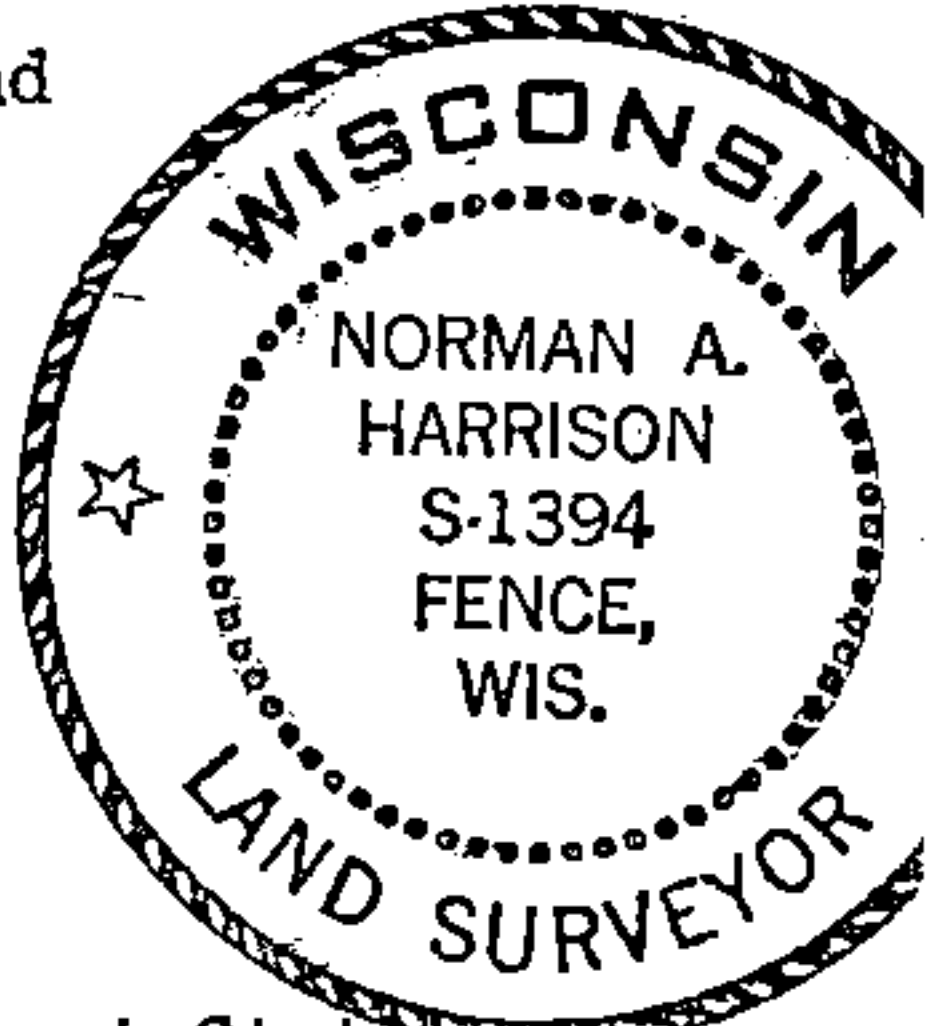
4-11-95
 Date

CERTIFIED LAND CORNER RESTORATION

Index No.

State of Wisconsin }
County of Forest } ss.

U.S. Public Land Corner
History of original corner establishment: Exterior line between Township 37 North and Township 38 North, Range 14 East run by: Alfred Millard under contract dated June 3, 1857



I, Norman A. Harrison, do hereby certify that on the 20th day of January, 1982, I found evidence of the Northwest corner of Section 1, Township 37 North, Range 14 East, Fourth Principal Meridian, as described hereon; and that from this evidence I established a new monument and accessories as described hereon to perpetuate the original location of this corner.

Original bearing trees
Hemlock 20" N 22 W 23 lks
Yellow birch 14" S 63 E 15 lks

Description of corner evidence found: No evidence of original corner found
Chicago and Northwestern railway survey map, copy viewed at Federal Forest Station at Laona, Wis.

Plans for Highway "139", Project no. 7899, Project no. S 0709(1) and Field Book no. 6805 page 48, on record at Wis. Dept. of Transportation, Rhinelander, Wis.

Resident witnesses:

.....
.....
.....

Description of monument and accessories I established to perpetuate the original location of this corner.

Corner set from center line of Highway "139" as shown on Highway plans Project no. S 0709(1) and in Field Book no. 6805 page 48 for survey work in said Section 1

Distance by proportionate measure West to South quarter corner is 5 feet short of the same distance shown on railway survey map.

Corner set, Jan. 20, 1982. Forest County aluminum monument set April 25, 1983

Bearing trees or objects, magnetic bearings
Maple 14" N 49° 38' E 92.0'
Telephone riser S 74° 45' E 66.00'
Maple 11" S 54° 36' W 15.2'
Maple 13" N 64° 56' W 17.0'

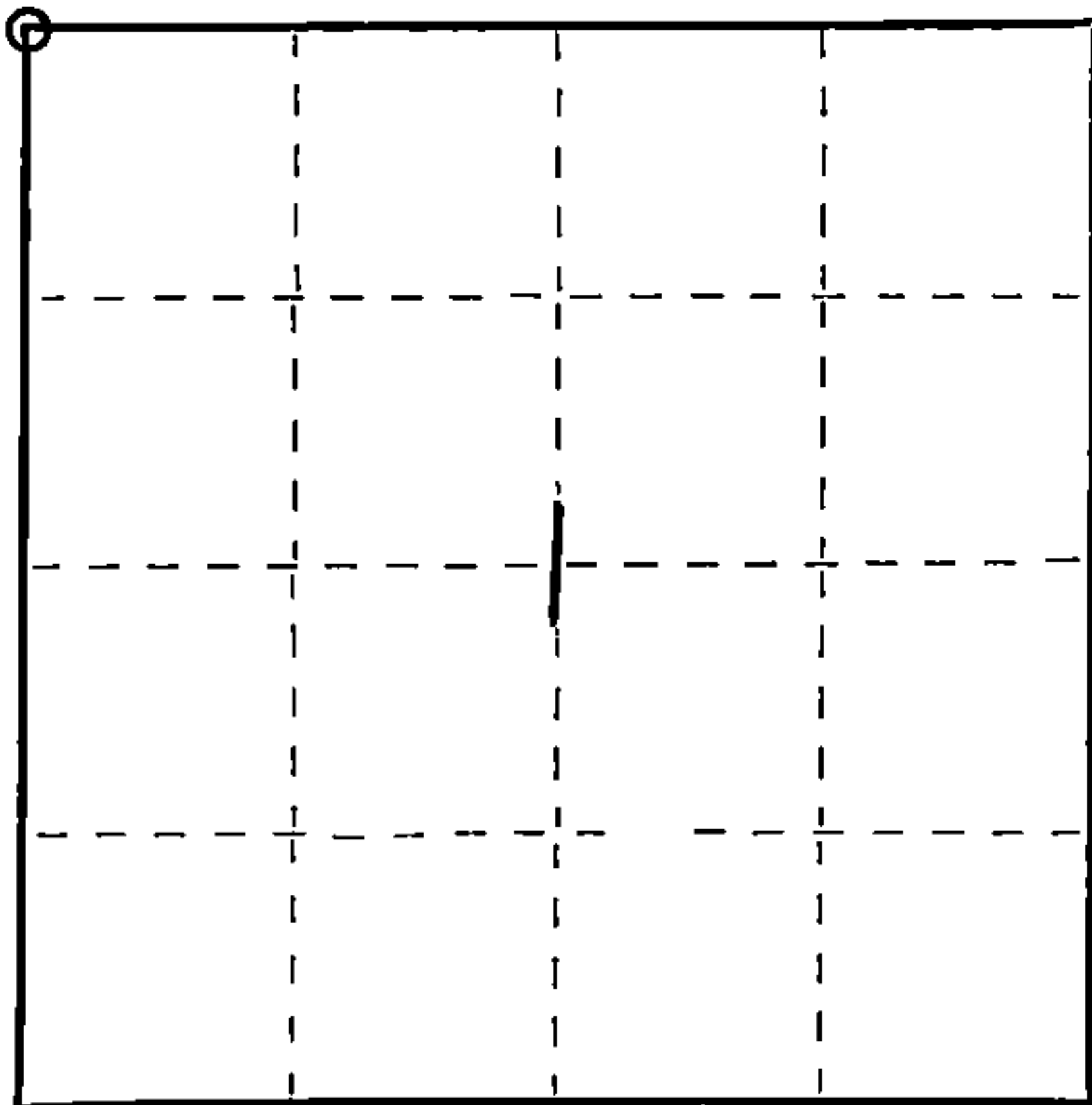
Dated at Fence, Wis., this 5th day of May, 1983.

Signature Norman A. Harrison Title Surveyor Registration No. 1394
(County Surveyor, Registered Land Surveyor, or other duly authorized official)

Office of Register of Deeds, County of Forest, I hereby certify that the within instrument was filed in this office for record on the 5th day of May, 1983 at 4:30 o'clock P. M.

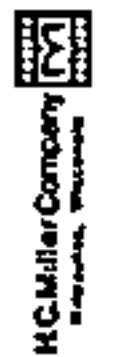
Eugene Stagny (Register of Deeds)

By Deputy



○ = Corner monument restored.

Stock No. 26272



FORM 985

4381435 0000

DOCUMENT NO. 123315

U.S. PUBLIC LAND SURVEY MONUMENT RECORD

Index No. A-21

State of Wisconsin }
County of Forest } ss.

I William B. Cochrane, do hereby certify that on the 26th day of September, 1983, I found evidence of the Northwest Section corner of Section 1 Township 37, North, Range 14 East, Fourth Principal Meridian, as described hereon; and that from this evidence I established a new monument and accessories as described hereon to perpetuate the original location of this corner.

Resident witnesses:

David Brownell

Tony Tillman

History of original corner establishment:

Original Government Survey in 1858 by Alfred Millard. West between Sections 1 and 36, 80.00 chains, set section corner post, to Sections 1, 2, 35, and 36. From which the following bear:

Sugar	12"	N55°W	50 lks.
Elm	9"	N 2°E	13 lks.
Sugar	12"	S55°W	27 lks.
Sugar	12"	S40°E	25 lks.

Description of corner evidence found:

No original corner evidence was recovered.

Found a 2½" diameter aluminum pipe monument stamped: T38N R14E, S1, S2, S35, S36, T37N, S-1394, Forest County. From which the following bear:

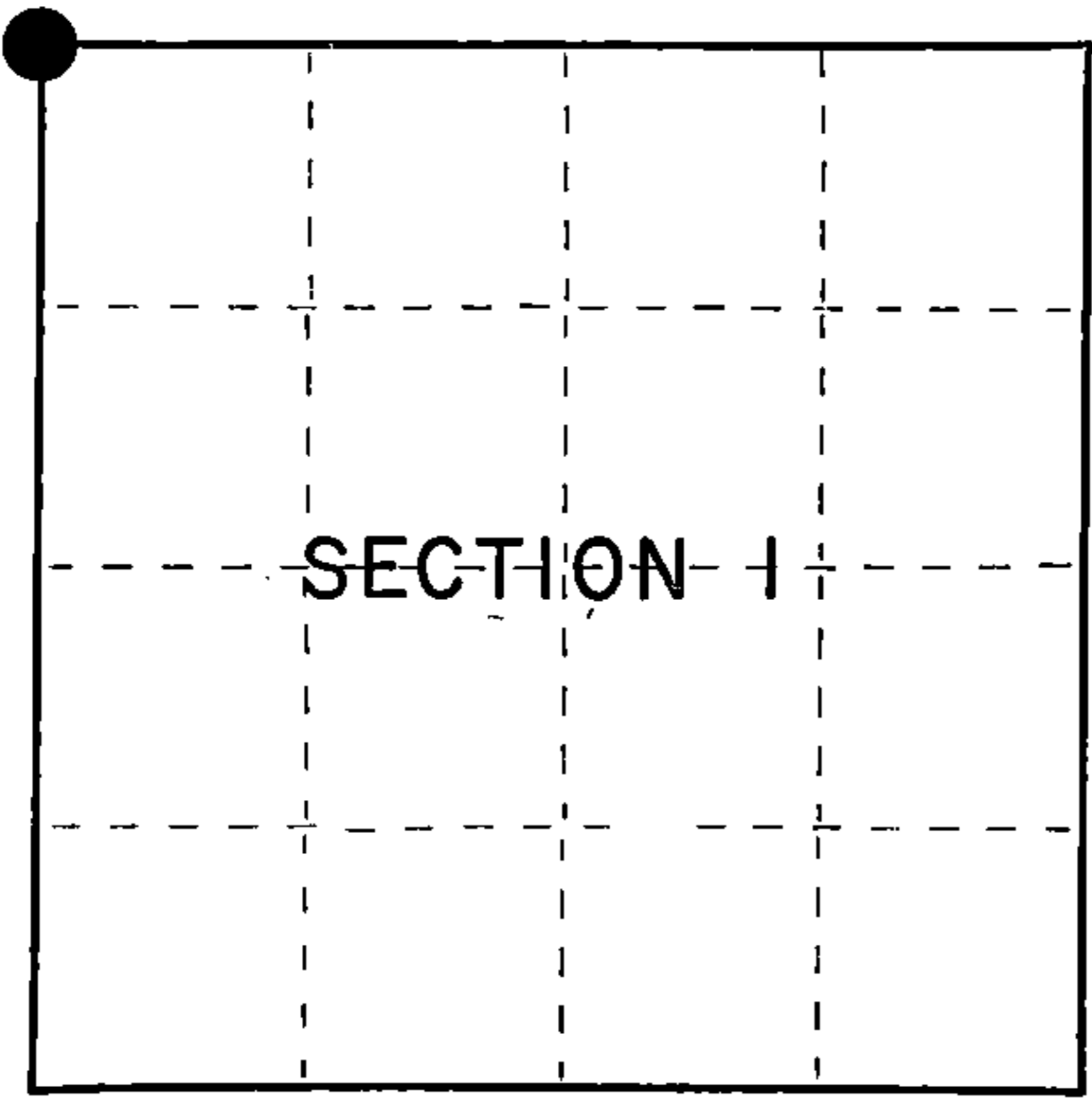
Maple	18"	N54°E	91.85 feet
Maple	14"	N74°W	17.14 feet

This monument was set in place of a 1¼" dia. iron pipe, which fit the measurements as shown on the State Hwy Division Job #7115, dated 9/2/47. This position also fits the measurements as shown on the Chicago-Northwestern Railway Plan.

Description of monument and accessories I established to perpetuate the original location of this corner.

Blazed and scribed a new bearing tree:

Maple	5"	S35°E	67.75 feet
Steel sign post		West	0.50 feet



○ = Corner monument restored.

Dated at Hiles, Wis., this 12th day of March, 1985

Signature William B. Cochrane Title Land Surveyor Registration No. S-1107
(County Surveyor, Registered Land Surveyor, or other duly authorized official)

Office of Register of Deeds, County of Forest, I hereby certify that the within instrument was filed in this office for record on the 24th day of April, 1985 at 1:00 o'clock P. M.

Paul Aschenbrenner
(Register of Deeds)

By.....Deputy

FORM NO. 985-A

H.C. Miller Company
MILWAUKEE, WISCONSIN

Stock No. 26273

Document Number 122873

4381435000

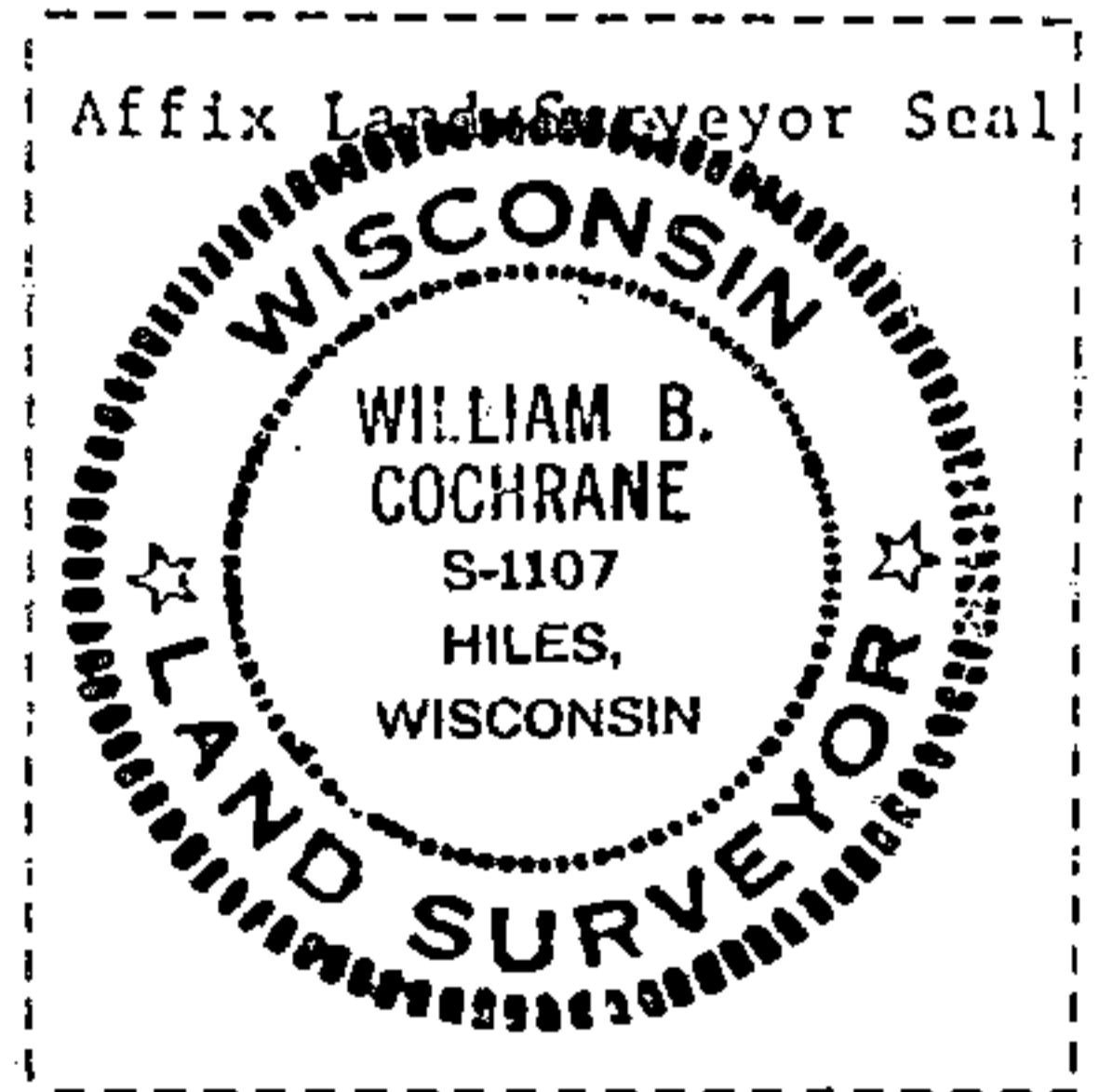
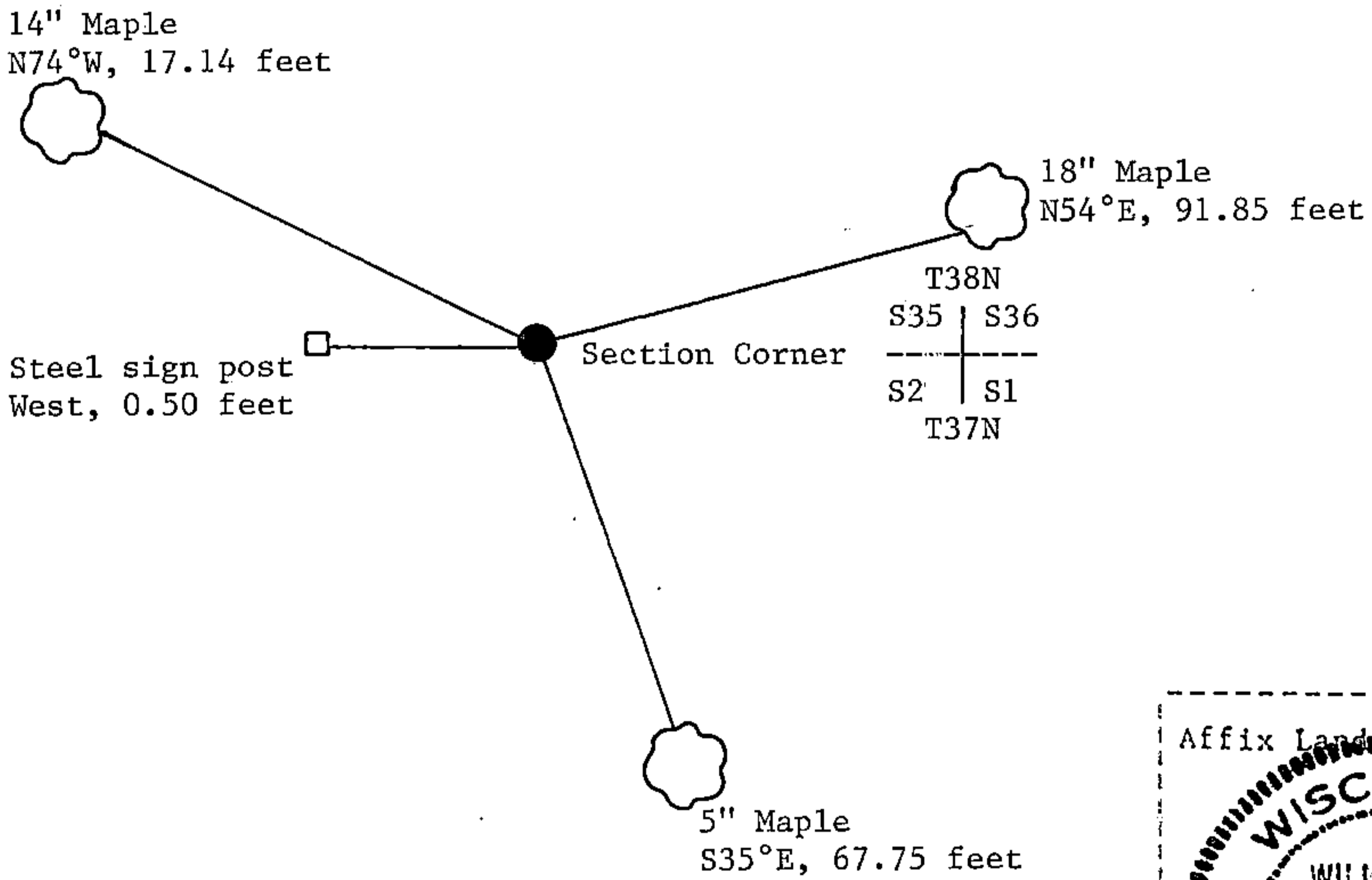
(e) Describe any material discrepancy between the location of the corner as restored or reestablished and the location of that corner as previously restored or reestablished by distance and direction. Show the discrepancy on the plan view drawing under (d), above. Show the distances between the corner as previously restored or reestablished and (1) the corner as restored or reestablished, and (2) to at least 2 of the witness monuments shown on the drawing in (d), above.

See drawing below.

(f) Was the corner restored through acceptance of (1) an obliterated evidence location, or, (2) a found perpetuated location?

Restored from accepted evidence.

(g&h) Was the corner reestablished through lost corner proportionate methods? If so, show the method, including the directions and distances to other public land survey corners used as evidence or used for proportioning in determining the corner location?



(i) I, William B. Cochrane
 (type or print name) certify that the corner location shown on this record was determined by me or under my direction and control and that this U.S. Public Land Survey Monument Record is correct and complete to the best of my knowledge and belief.

William B. Cochrane March 12, 1985
 Signature Date

U.S. PUBLIC LAND SURVEY MONUMENT RECORD

Index No. Z-21

State of Wisconsin }
County of Forest } ss.

I, William B. Cochrane, do hereby certify that on the 26th day of September, 1983, I found evidence of the Southwest Section corner of Section 36 Township 38, North, Range 14 East, Fourth Principal Meridian, as described hereon; and that from this evidence I established a new monument and accessories as described hereon to perpetuate the original location of this corner.

Resident witnesses:

David Brownell

Tony Tillman

History of original corner establishment:

Original Government Survey in 1858 by Alfred Millard. West between Sections 1 and 36, 80.00 chains, set Section Corner post to Sections 1, 2, 35, and 36. From which the following bear:

Elm	9"	N 2°E	13 lks.
Sugar	12"	N55°W	50 lks.
Sugar	12"	S55°W	27 lks.
Sugar	12"	S40°E	25 lks.

Description of corner evidence found:

Found a 2½" diameter aluminum pipe monument stamped: T38N R14E, S1, S2, S35, S36, T37N, S-1394, Forest County. From which the following bear:

Maple	18"	N54°E	91.85 feet
Maple	14"	N74°W	17.14 feet

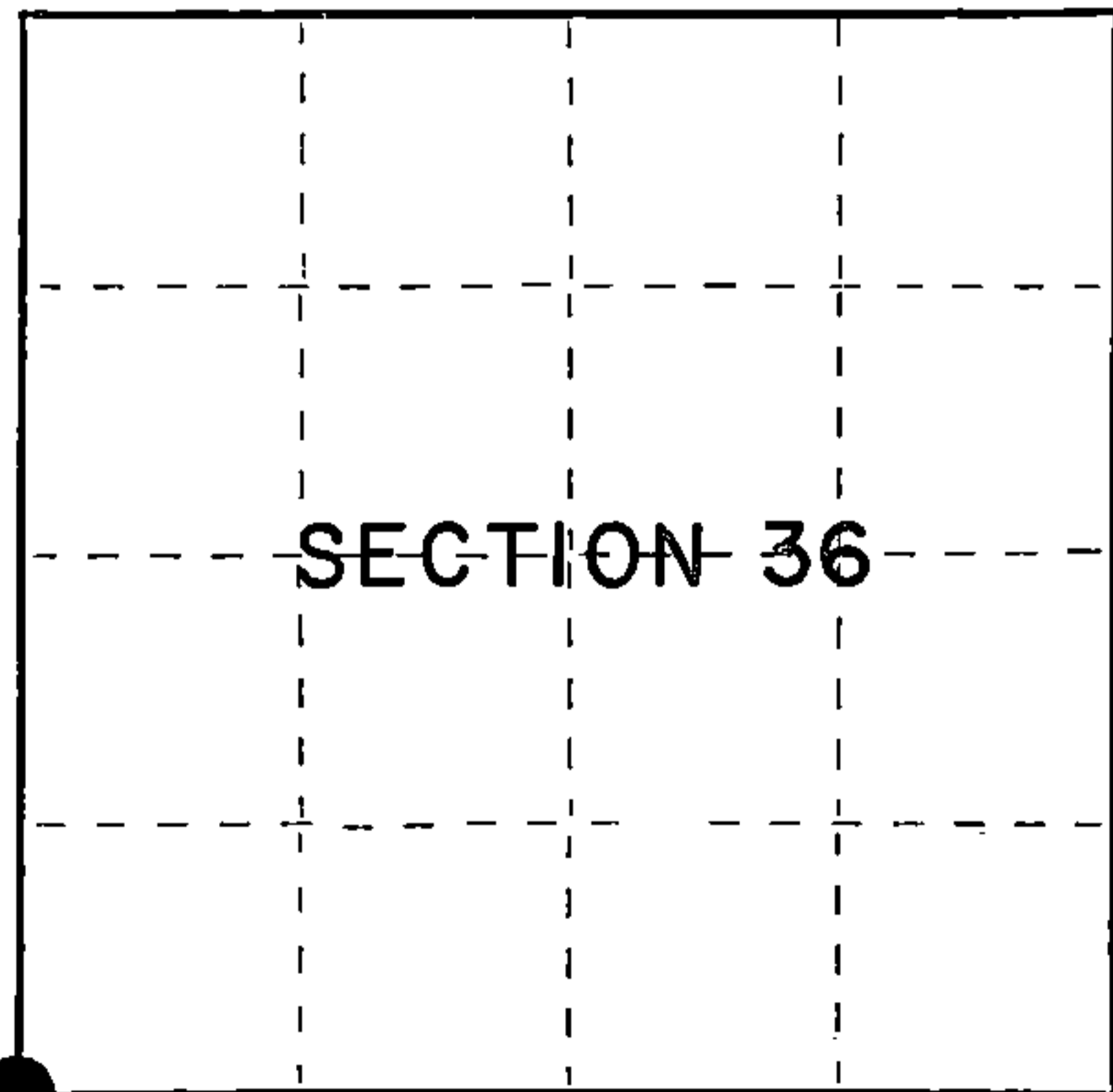
This monument was set in place of a 1½" dia. iron pipe, which fit the measurements as shown on the State Hwy Division Job #7115, dated 9/2/47. This position also fits the measurements as shown on the Chicago-Northwestern Railway Plan.

No original corner evidence was recovered.

Description of monument and accessories I established to perpetuate the original location of this corner.

Blazed and scribed a new bearing tree:

Maple	5"	S35°E	67.75 feet
Steel sign post		West	0.50 feet



○ = Corner monument restored.

Dated at Hiles, Wis., this 12th day of March, 1985

Signature William B. Cochrane Title Land Surveyor Registration No. S-1107
(County Surveyor, Registered Land Surveyor, or other duly authorized official)

Office of Register of Deeds, County of Forest, I hereby certify that the within instrument was filed in this office for record on the 24th day of April, 1985 at 1:00 o'clock P. M.

Paul Aschenbrenner
(Register of Deeds)

By _____ Deputy

FORM NO. 985-A

H.C. Miller Company
MILWAUKEE, WISCONSIN

Stock No. 26273

Document Number 127912

4381435000

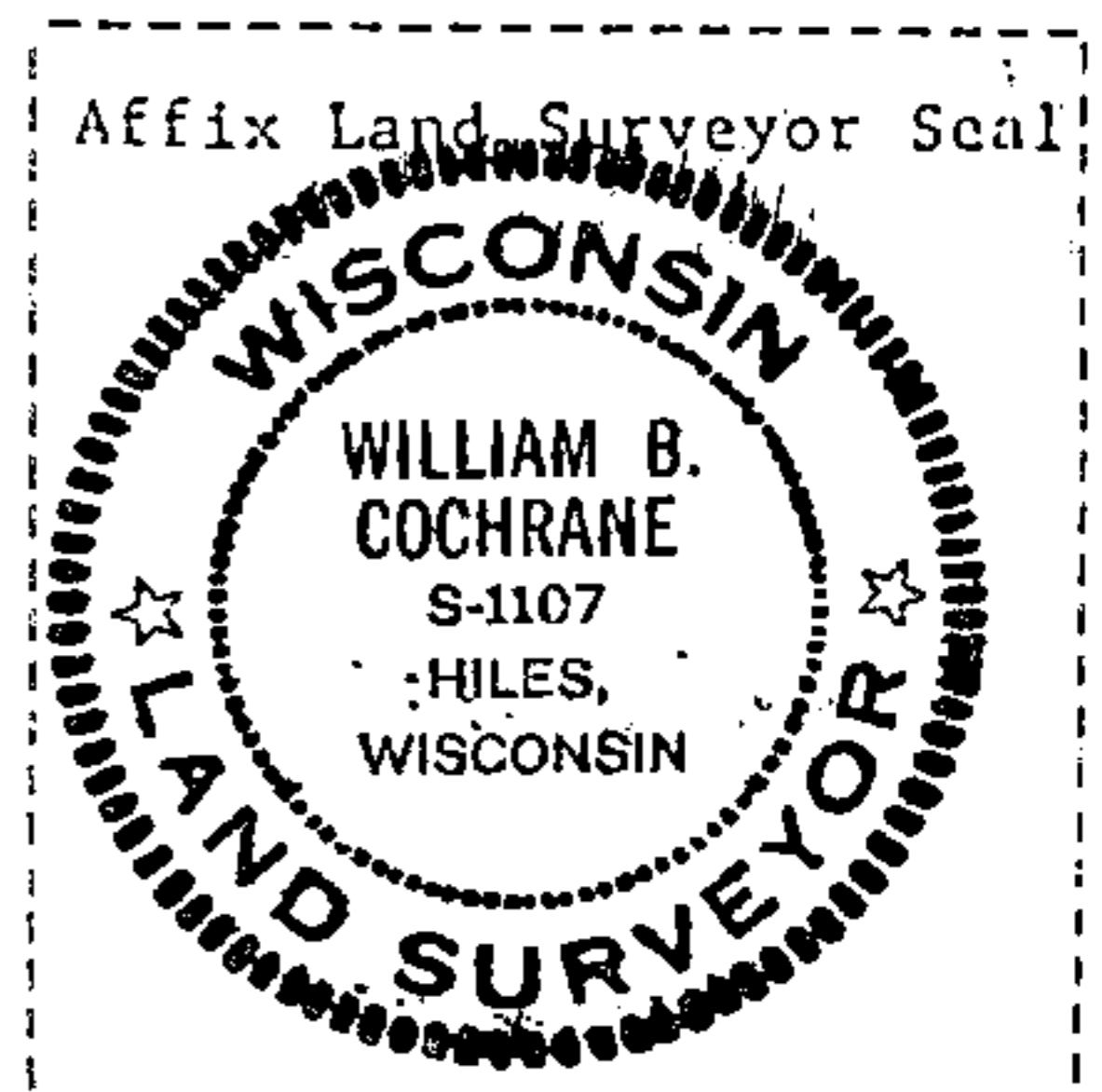
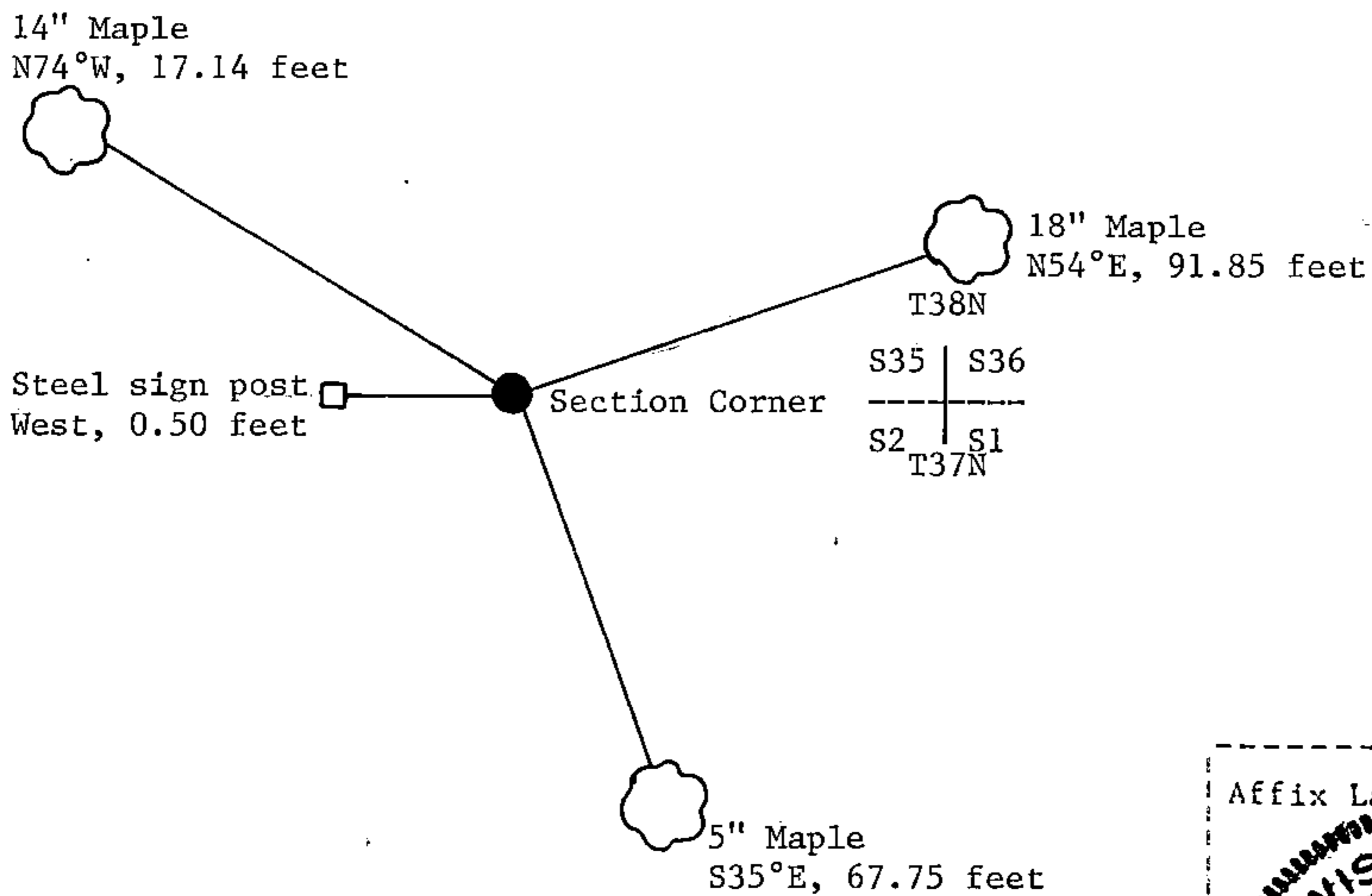
(e) Describe any material discrepancy between the location of the corner as restored or reestablished and the location of that corner as previously restored or reestablished by distance and direction. Show the discrepancy on the plan view drawing under (d), above. Show the distances between the corner as previously restored or reestablished and (1) the corner as restored or reestablished, and (2) to at least 2 of the witness monuments shown on the drawing in (d), above.

See drawing below.

(f) Was the corner restored through acceptance of (1) an obliterated evidence location, or, (2) a found perpetuated location?

Restored from accepted evidence.

(g&h) Was the corner reestablished through lost corner proportionate methods? If so, show the method, including the directions and distances to other public land survey corners used as evidence or used for proportioning in determining the corner location?



(i) I, William B. Cochrane
(type or print name) certify that the corner location shown on this record was determined by me or under my direction and control and that this U.S. Public Land Survey Monument Record is correct and complete to the best of my knowledge and belief.

William B. Cochrane
Signature

March 12, 1985
Date