

U.S. PUBLIC LAND SURVEY MONUMENT RECORD

Index No. Z-15

State of Wisconsin }  
County of Forest } ss.

I, Gary L. Pisoni, do hereby certify that on the 4th day of March, 1994, I found evidence of the South Quarter corner of Section 34 Township 38 North, Range 14 East, Fourth Principal Meridian, as described hereon; and that from this evidence I established a new monument and accessories as described hereon to perpetuate the original location of this corner.

Resident witnesses:

History of original corner establishment:

Original Government Survey in 1858 by Alfred Millard. At 40.00 chains, set Quarter Section Post, from which the following bear; 12" Yellow Birch, N63°E, 4 lks., Cedar, 12", S65°W, 5 lks.

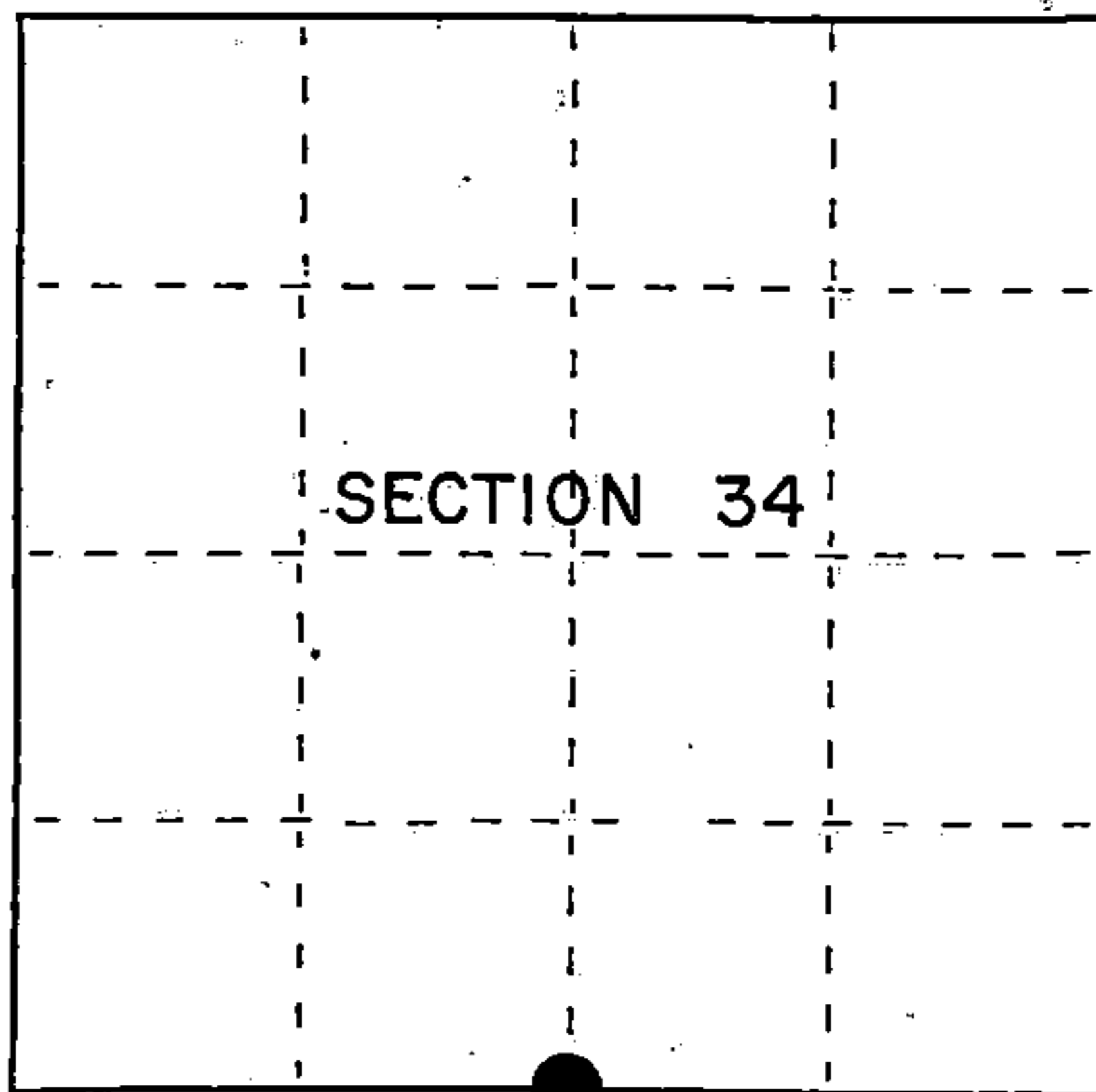
In 1989 Glen Barker, RLS, with Consolidated Papers, restored the corner position at proportionate distance and on line between the Southeast and Southwest Section Corners of Section 34. Set a 2 1/4" diameter aluminum Forest County Monument with an aluminum cap stamped to identify corner. Blazed and scribed new bearing trees;

Description of corner evidence found:	Red Maple	16"	N52°W	25.52 feet
	Red Maple	10"	N09°W	48.69 feet
	Red Maple	12"	N34°E	41.83 feet
	Sugar Maple	6"	S37°E	56.81 feet

Found monument and bearing trees as described above;

Red Maple	11"	N34°E	41.89 feet
Sugar Maple	6"	S37°E	56.99 feet
Red Maple	9"	N09°W	48.69 feet
Red Maple	14"	N52°W	25.57 feet

Description of monument and accessories I established to perpetuate the original location of this corner.  
Set a Steel Sign Post, South, 0.74 feet from monument.



● = Corner monument restored.

Dated at Iron River, WI, this 5th day of March, 1995

Signature: Gary L. Pisoni Title: Land Surveyor Registration No. S-1634  
(County Surveyor, Registered Land Surveyor, or other duly authorized official)

Office of Register of Deeds, County of Forest, I hereby certify that the within instrument was filed in this office for record on the 10th day of March, 1997 at 1:30 o'clock P.M.

(Register of Deeds)

By: [Signature] Deputy

FORM NO. 985-A

H.C. Miller Company

Stock No. 26273

158158

43814340020

(e) Describe any material discrepancy between the location of the corner as restored or reestablished and the location of that corner as previously restored or reestablished by distance and direction. Show the discrepancy on the plan view drawing under (d), above. Show the distances between the corner as previously restored or reestablished and (1) the corner as restored or reestablished, and (2) to at least 2 of the witness monuments shown on the drawing in (d), above.

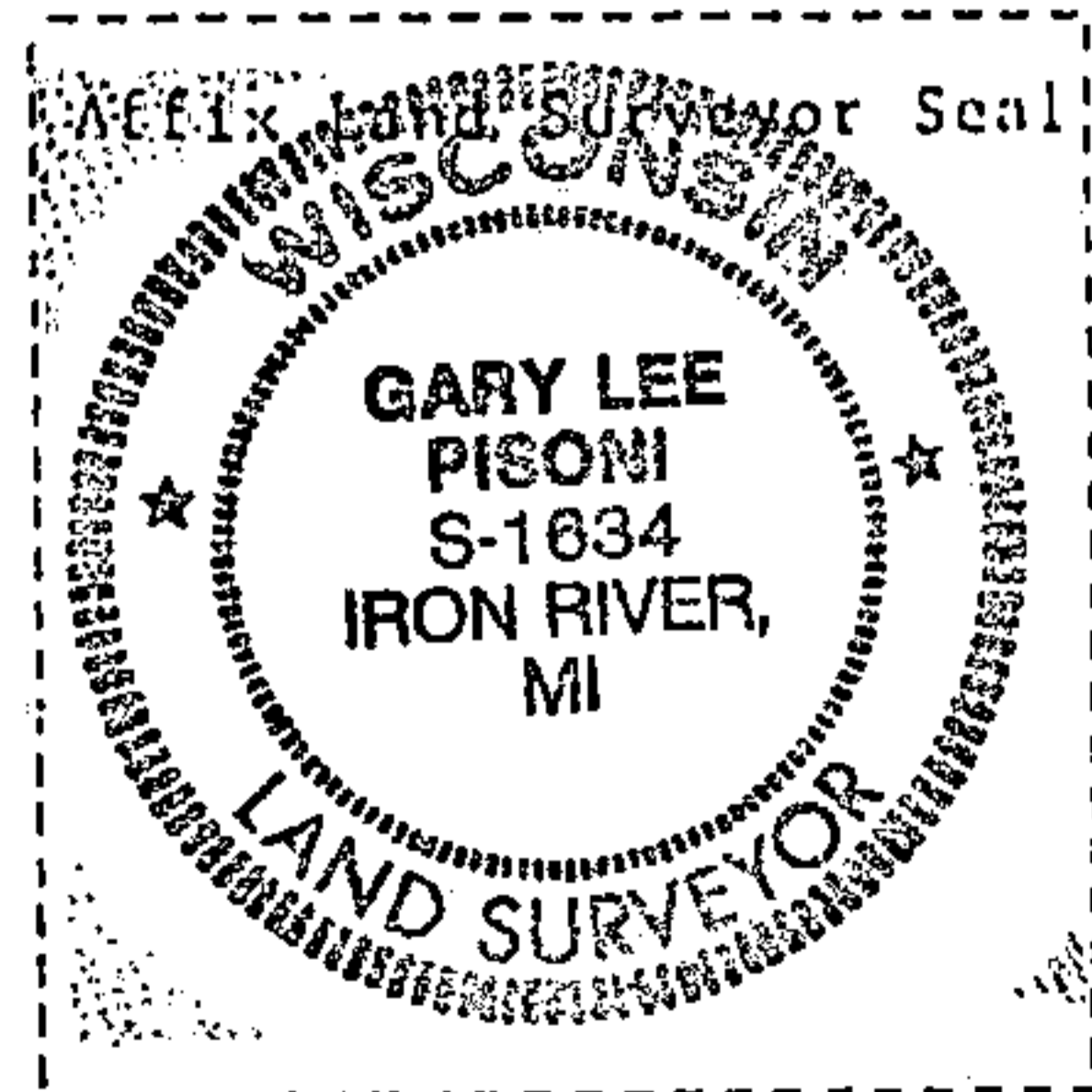
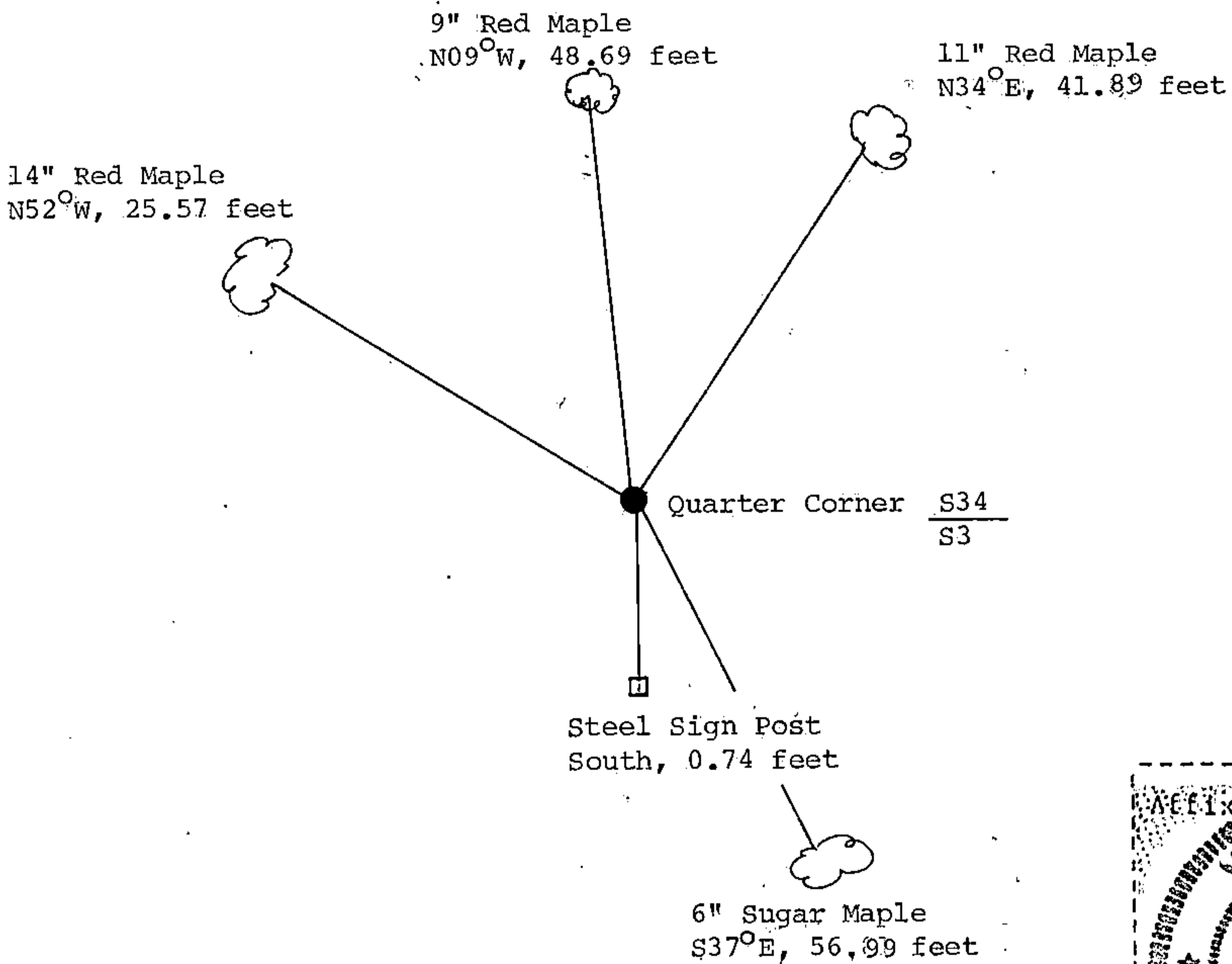
None

(f) Was the corner restored through acceptance of (1) an obliterated evidence location, or, (2) a found perpetuated location?

Restored through acceptance of a found perpetuated location.

(g&h) Was the corner reestablished through lost corner proportionate methods? If so, show the method, including the directions and distances to other public land survey corners used as evidence or used for proportioning in determining the corner location?

No



(i) I, Gary L. Pisoni (type or print name) certify that the corner location shown on this record was determined by me or under my direction and control and that this U.S. Public Land Survey Monument Record is correct and complete to the best of my knowledge and belief.

Gary L. Pisoni  
Signature

5-16-95  
Date