

CERTIFIED LAND CORNER RESTORATION

State of Wisconsin }
County of Forest } ss.

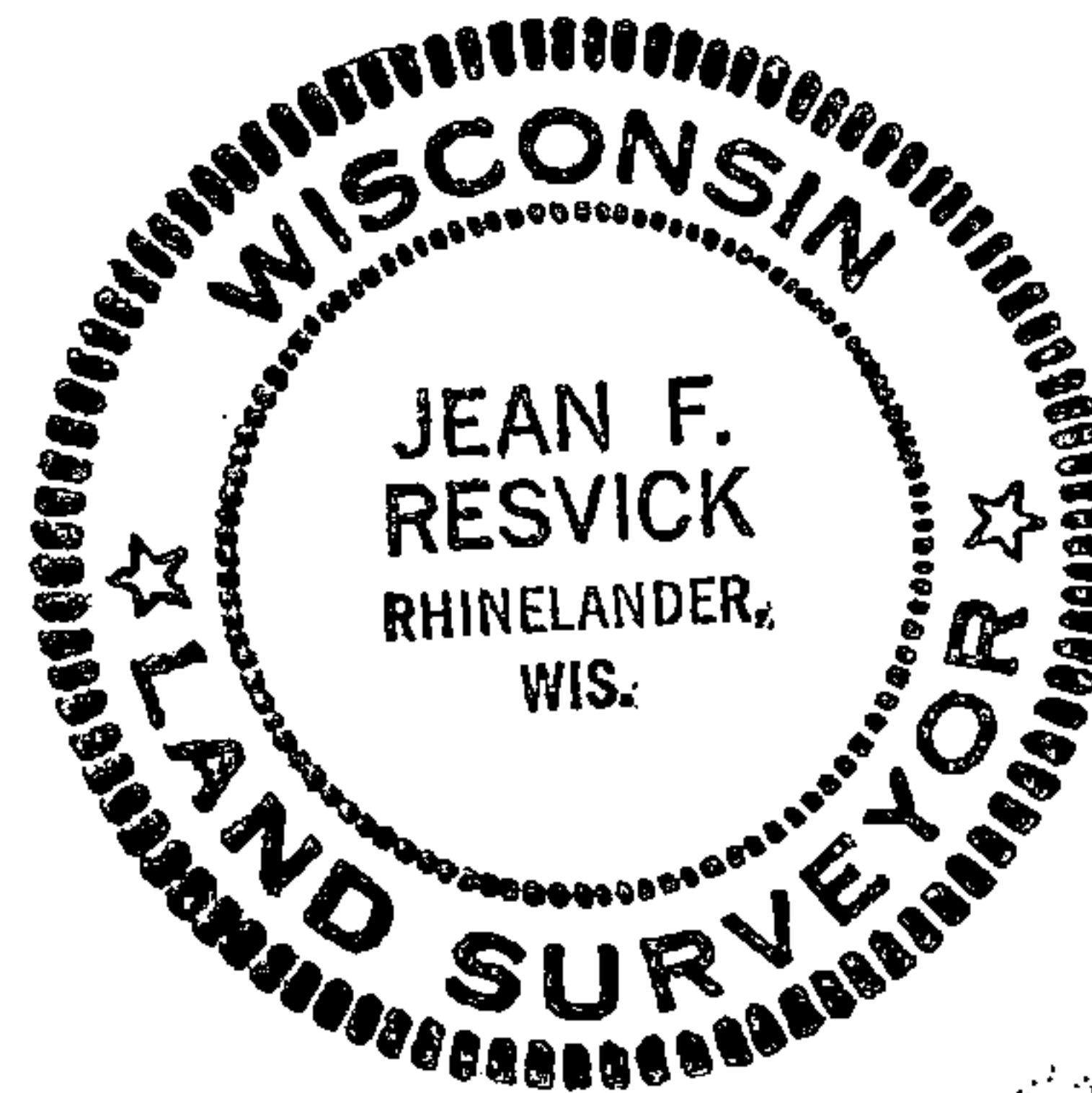
I, Jean F. Resvick, do hereby certify that on the 16th day of August, 1966, I found evidence of the West quarter corner of Section 32 Township 38 North, Range 14 East, Fourth Principal Meridian, as described hereon; and that from this evidence I established a new monument and accessories as described hereon to perpetuate the original location of this corner:

Description of original monument and accessories and subsequent restorations:

- North 40.00 chains north between sections 31 and 32 set post for quarter corner.
- Cedar 15", N73°W, 12 lks.
- Cedar 12", S54°E, 10 lks.
- 8 chains south of corner leave swamp.
- 5 chains north of corner leave swamp.

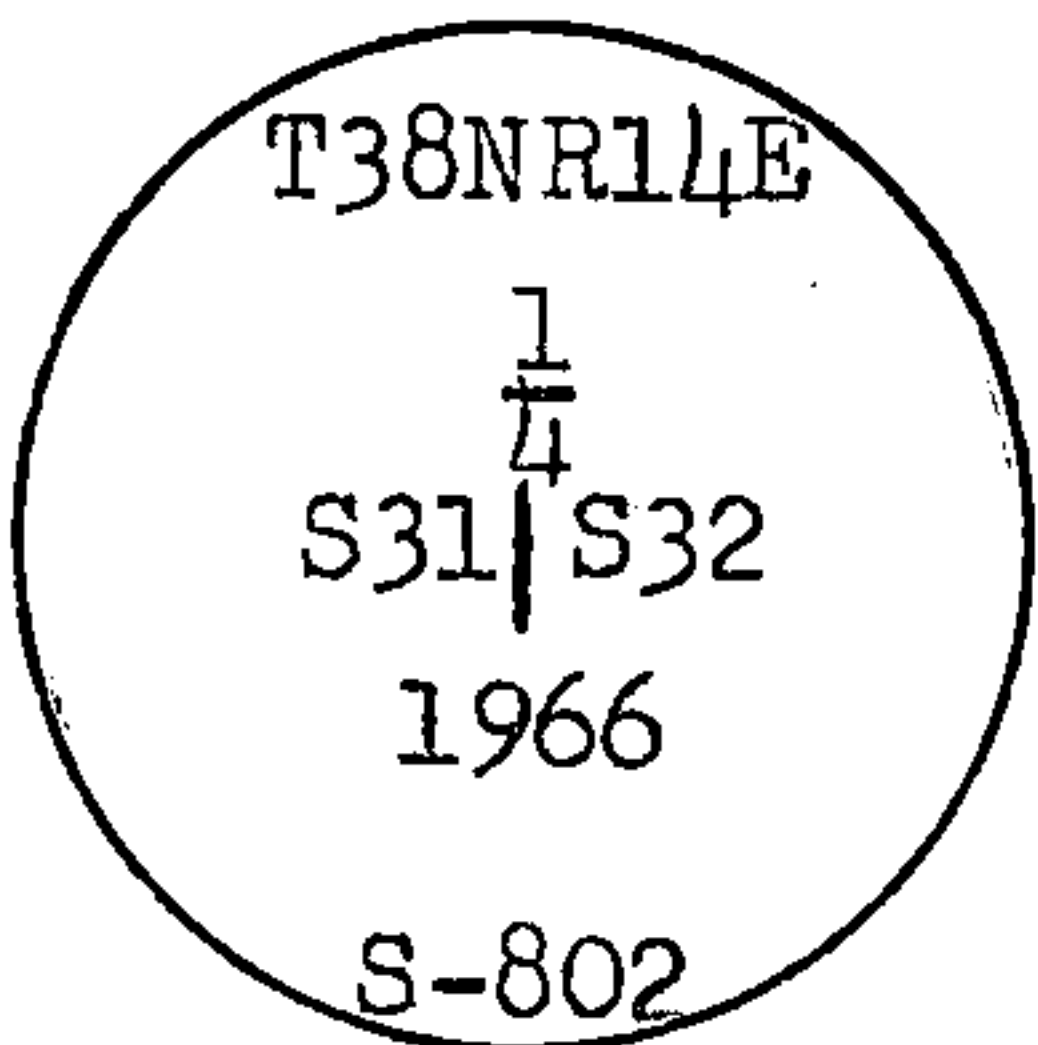
Description of corner evidence found:

- 6x6 cedar post rotted off with top set in place.
- 6x6 cedar post alongside of old post.
- Cedar snag bears N83°W, 7.9 feet.
- Fallen cedar bears S54°E, 6.6 feet.
- Road bears N 145 feet from post.
- 5 chains north to edge of swamp.



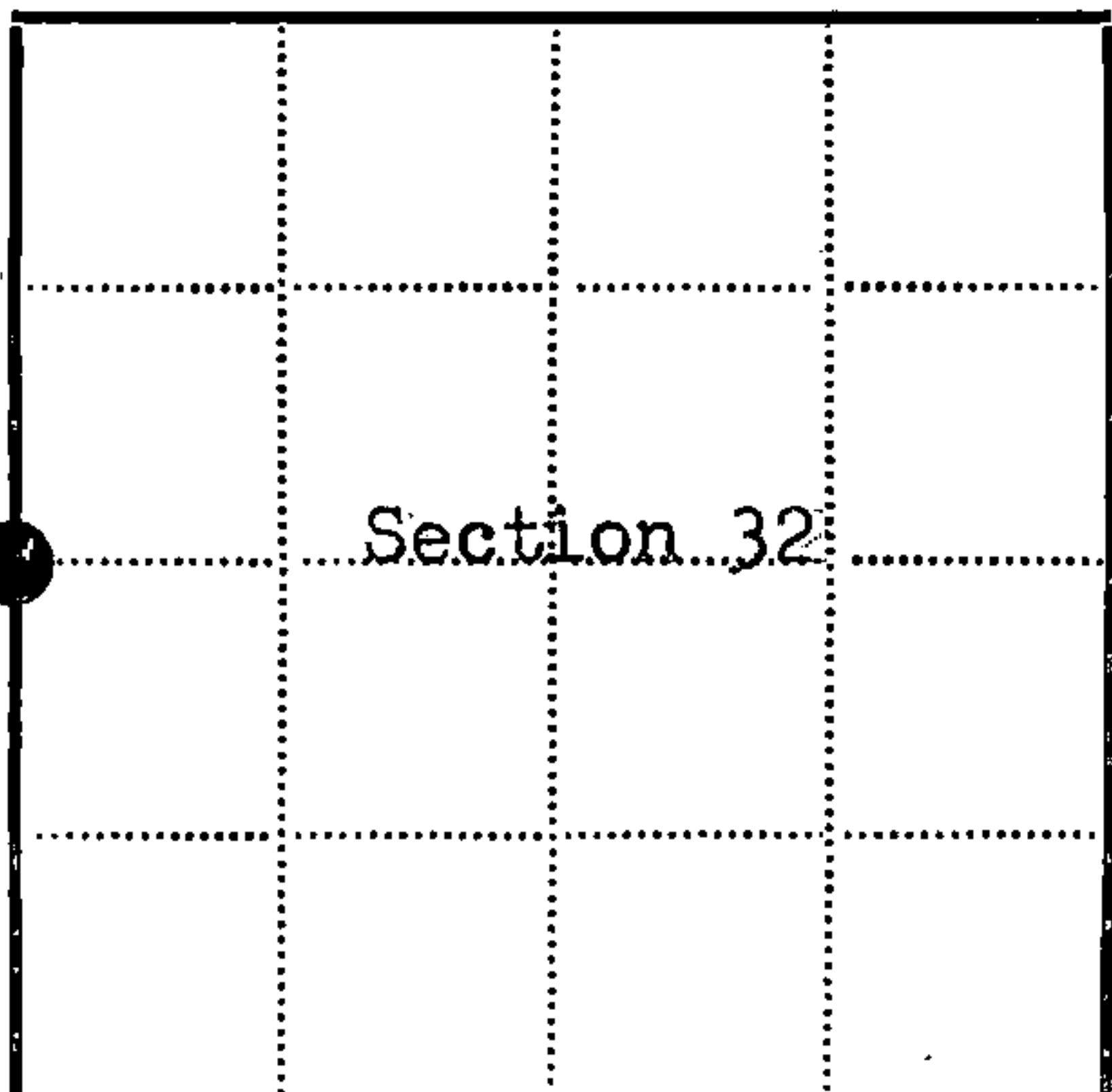
Description of monument and accessories I established to perpetuate the original location of this corner:

Replaced cedar post with 2 inch inside diameter, galvanized iron pipe, 5 feet long, flanged at bottom, filled with concrete, with brass tablet marked:



From which the following blazed and scribed new bearing trees bear:

- Cedar 8", S14°E, 20.28 ft., 30.73 lks.
- Cedar 4", S37°W, 28.80 ft., 43.64 lks.
- Cedar 4", N56°W, 27.65 ft., 41.89 lks.



● = Corner monument restored
□ =

Resident witnesses.....

Dated at Rhinelanders Wisconsin, this 27th day of Feb 1967.

Signature Jean F. Resvick Title Cadastral Surveyor
(County Surveyor, Registered Land Surveyor, or other duly authorized official)

Surveyors Registration No. S-802 DOC. NO. 92686

Office of Register of Deeds County of Forest

I hereby certify that the within instrument was filed in this office for record on the 2nd day of March 1967, and was filed in Book No. 1 Page No. X-5 of County Records.

Signature Eugene Stetson Title Register of Deeds

Township 38 North, Range 14 East, Section 32, Index No. X-5, Page No.

43814312000

U.S. PUBLIC LAND SURVEY MONUMENT RECORD

Index No. X - 5

State of Wisconsin }
 County of Forest } ss.

I, Gary L. Pisoni, do hereby certify that on the 17th day of January, 1995, I found evidence of the East Quarter corner of Section 31 Township 38, North, Range 14 East, Fourth Principal Meridian, as described hereon; and that from this evidence I established a new monument and accessories as described hereon to perpetuate the original location of this corner.

Resident witnesses:

History of original corner establishment:

Original Government Survey in 1865 by James L. Nowlin. At 40.00 chs., set Quarter Section Post from which the following bear; Cedar, 15", N73°W, 12 lks., Cedar, 12", S54°E, 10 lks.

In 1966, Jean Resvick, RLS, with the U.S. Forest Service, found a 6" X 6" Cedar Post along with original bearing tree evidence and a swamp call to the North. In place of post, set a 2" diameter galvanized iron pipe with a brass cap stamped to identify the corner. Blazed and scribed the following new bearing trees;

Cedar	8"	S14°E	20.28 feet
Cedar	4"	S37°W	28.80 feet
Cedar	4"	N56°W	27.65 feet

Description of corner evidence found:

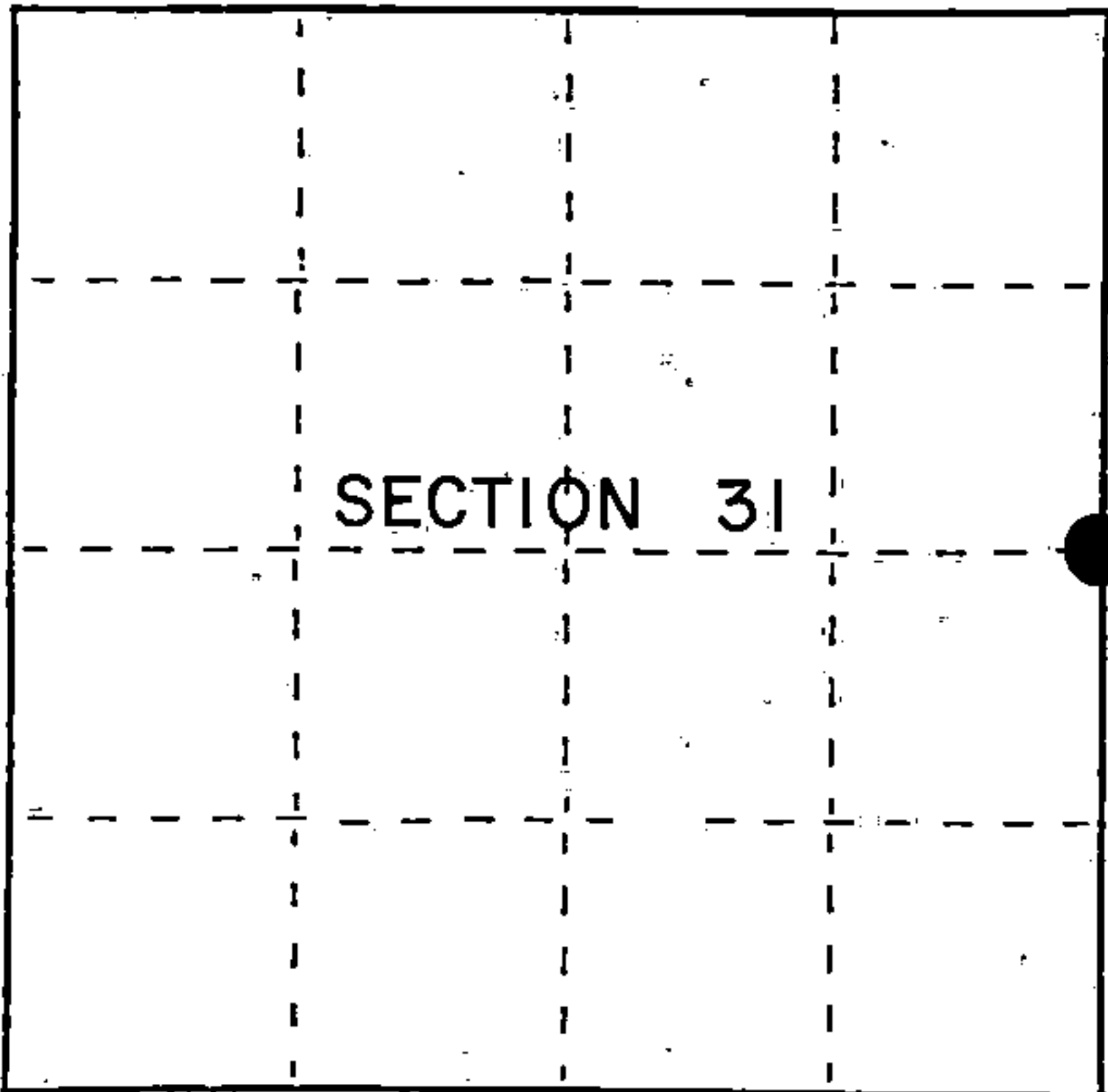
Found monument and bearing trees as described above;

Cedar	13"	S14°E	21.50 feet
Cedar	11"	S37°W	28.80 feet
Cedar	9"	N56°W	27.06 feet

Description of monument and accessories I established to perpetuate the original location of this corner.

Blazed and scribed a new bearing tree; (Measurement taken to a nail in side of tree)

Cedar	14"	N35°E	40.13 feet
Steel Sign Post		S17°W	1.44 feet



● = Corner monument restored.

Dated at Iron River, MI, Wis., this 5th day of March, 1995

Signature Gary L. Pisoni Title Land Surveyor Registration No. S-1634
 (County Surveyor, Registered Land Surveyor, or other duly authorized official)

Office of Register of Deeds, County of Forest, I hereby certify that the within instrument was filed in this office for record on the 20th day of March, 1997 at 1:30 o'clock P. M.

(Register of Deeds)

By Paul J. [Signature] Deputy

FORM NO. 985-A

H.C. Miller Company

Stock No. 26273

158149

43814312000

(d) Describe any material discrepancy between the location of the corner as restored or reestablished and the location of that corner as previously restored or reestablished by distance and direction. Show the discrepancy on the plan view drawing under (d), above. Show the distances between the corner as previously restored or reestablished and (1) the corner as restored or reestablished, and (2) to at least 2 of the witness monuments shown on the drawing in (d), above.

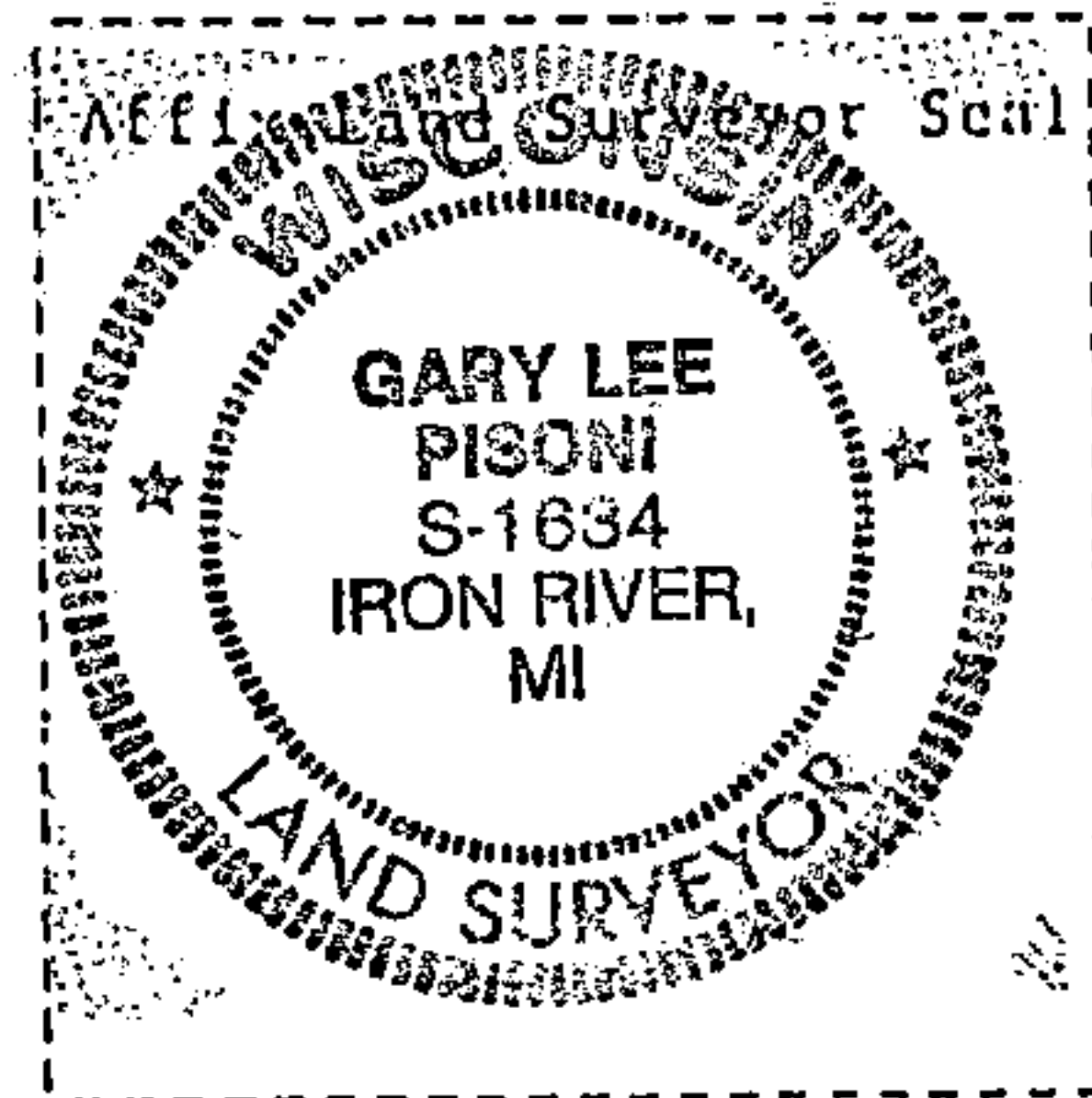
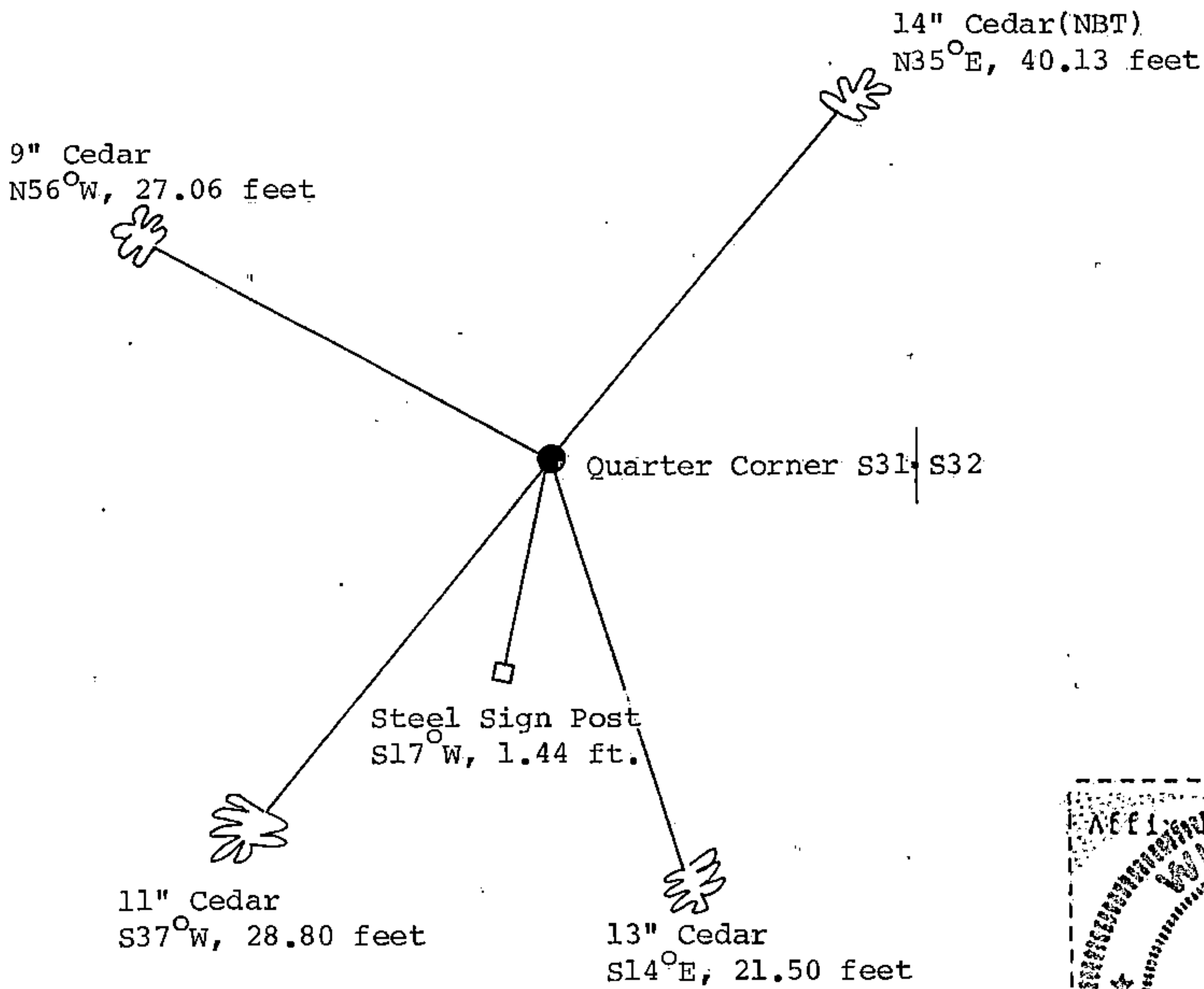
None

(f) Was the corner restored through acceptance of (1) an obliterated evidence location, or, (2) a found perpetuated location?

Restored through acceptance of a found perpetuated location.

(g&h) Was the corner reestablished through lost corner proportionate methods? If so, show the method, including the directions and distances to other public land survey corners used as evidence or used for proportioning in determining the corner location?

No



(i) I, Gary L. Pisoni
 (type or print name) certify that the corner location shown on this record was determined by me or under my direction and control and that this U.S. Public Land Survey Monument Record is correct and complete to the best of my knowledge and belief.

Gary L. Pisoni
 Signature

4-10-95
 Date