

CERTIFIED LAND CORNER RESTORATION

Index No. T-3
T 3

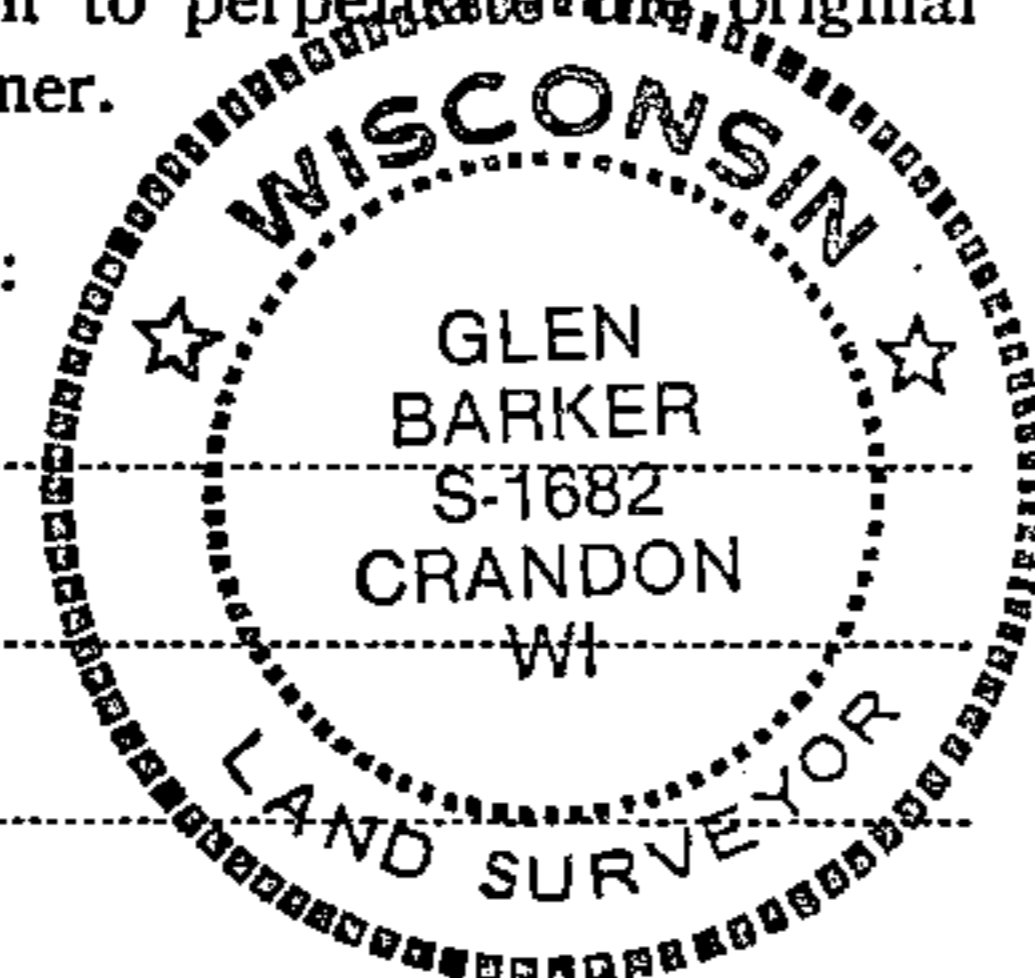
State of Wisconsin }
County of Forest } ss.

I, Glen Barker, do hereby certify that on the 17th day of December, 1984, I found established the C 1/4 corner of Section 30 Township 38, North, Range 14 East, Fourth Principal Meridian, as described hereon; and that from this evidence I established a new monument and accessories as described hereon to perpetuate the original location of this corner.

Resident witnesses:

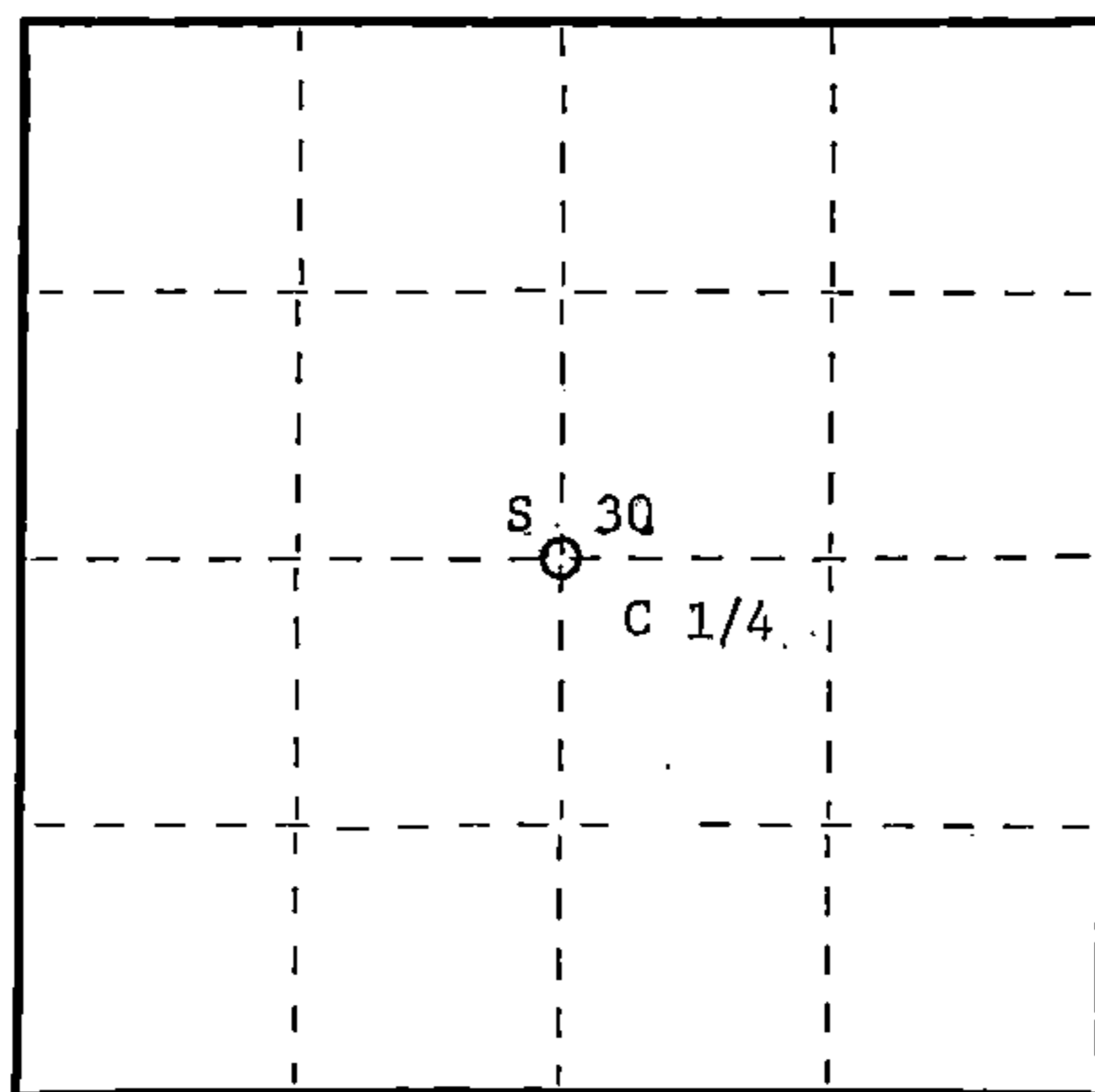
N. Spiess

R. Lundt



T38N

R14E



○ = Corner monument restored.

History of original corner establishment:

No evidence of any previous corner.

Description of corner evidence found:

Corner established by subdivision of Section 30.

C 1/4 corner sets 2622.90' of N 1/4

2596.78' of E 1/4

2620.82' of S 1/4

and 2812.88' of W 1/4

Description of monument and accessories I established to perpetuate the original location of this corner.

Set a 2½" A-1 Federal monument with ¾" alloy cap stamped: T38N

Monument projects 8" above ground

Marked NBTs:

Cedar 12" S26W 18.31'

Cedar 12" West 33.82'

Cedar 14" N15E 15.53'

C 1/4 S 30

R14E

S1682 - 1984

Dated at Rhineland, Wis., this 6th day of February, 1985

Signature Glen Barker Title Registered Land Surveyor Registration No. 1682
(County Surveyor, Registered Land Surveyor, or other duly authorized official)

Office of Register of Deeds, County of Forest, I hereby certify that the within instrument was filed in this office for record on the 22nd day of February, 1985 at 2:15 o'clock P. M.

Paul Aschenbrenner
(Register of Deeds)

By _____ Deputy

Document Number 127508

FORM 985 H. C. MILLER CO., MILWAUKEE

43814302020