

Document Number 127513

FORM 985 M. C. MILLER CO., MILWAUKEE

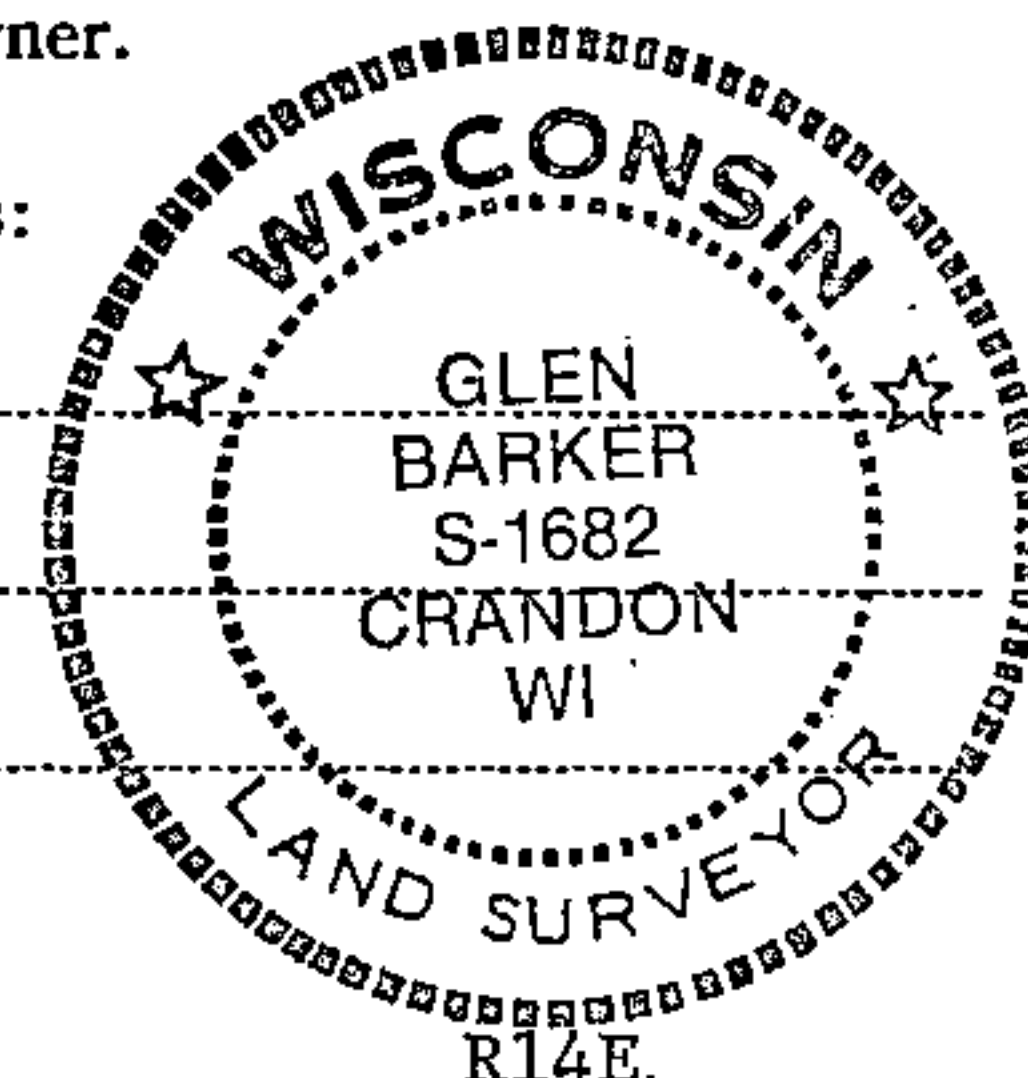
State of Wisconsin }
County of Forest } ss.

I, Glen Barker, do hereby
certify that on the 10th day
of December, 1984, I found
evidence of the SC 1/16
corner of Sec. 30
Township 38
14 East, Fourth Principal Meridian,
as described hereon; and that from this evidence
I established a new monument and accessories
as described hereon to perpetuate the original
location of this corner.

Resident witnesses:

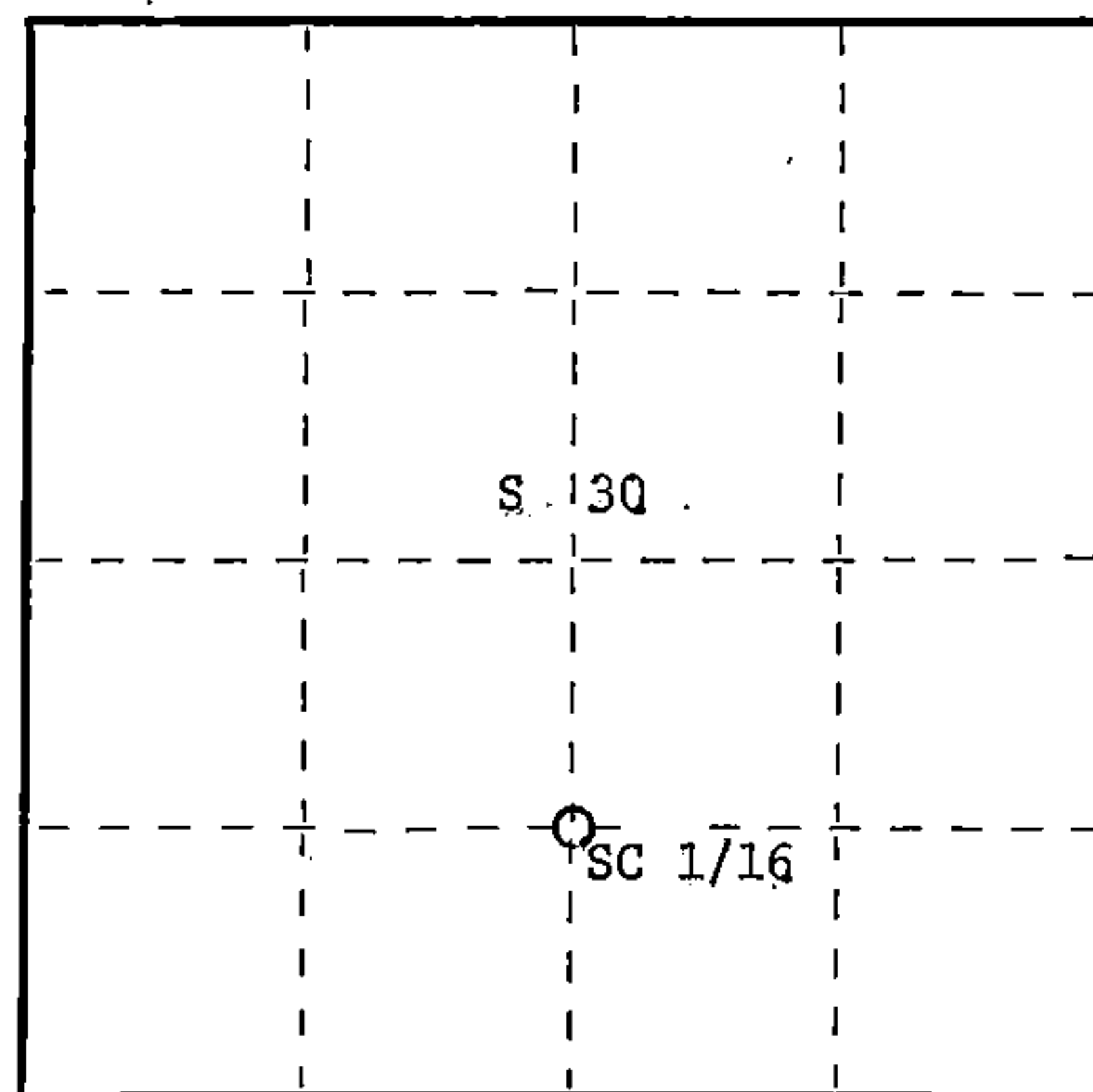
N. Spiess

R. Lundt



T38N

R14E



○ = Corner monument restored.

CERTIFIED LAND CORNER RESTORATION

Index No. U-3
U 3

History of original corner establishment:

No evidence of any previous corner.

Description of corner evidence found:

Total distance from 1/4 corner between Sections 30 & 31 to C 1/4 Section 30 is 2620.82'.
Set SC 1/16 1310.41' intermediate.

Description of monument and accessories I established to perpetuate the original location of this corner.

Set a 1" iron pipe with 2" diameter alloy cap stamped:

S1682

Monument projects 18" above ground.

T38N

Marked-NBTs:

Sugar 8" N21W 23.15'
Baswood 12" S64W 19.22'

CS 1/16 S30

R14E

CPI - 1984

Dated at Rhinelander, Wis., this 6th day of February, 1985

Signature: *Glen Barker* Title: Registered Land Surveyor Registration No. 1682
(County Surveyor, Registered Land Surveyor, or other duly authorized official)

Office of Register of Deeds, County of Forest, I hereby certify that the within
instrument was filed in this office for record on the 22nd day of February, 1985
at 2:15 o'clock P. M.

Paul Aschenbrenner
(Register of Deeds)

By _____ Deputy

43814301020