

CERTIFIED LAND CORNER RESTORATION

Index No. U-4
U 4

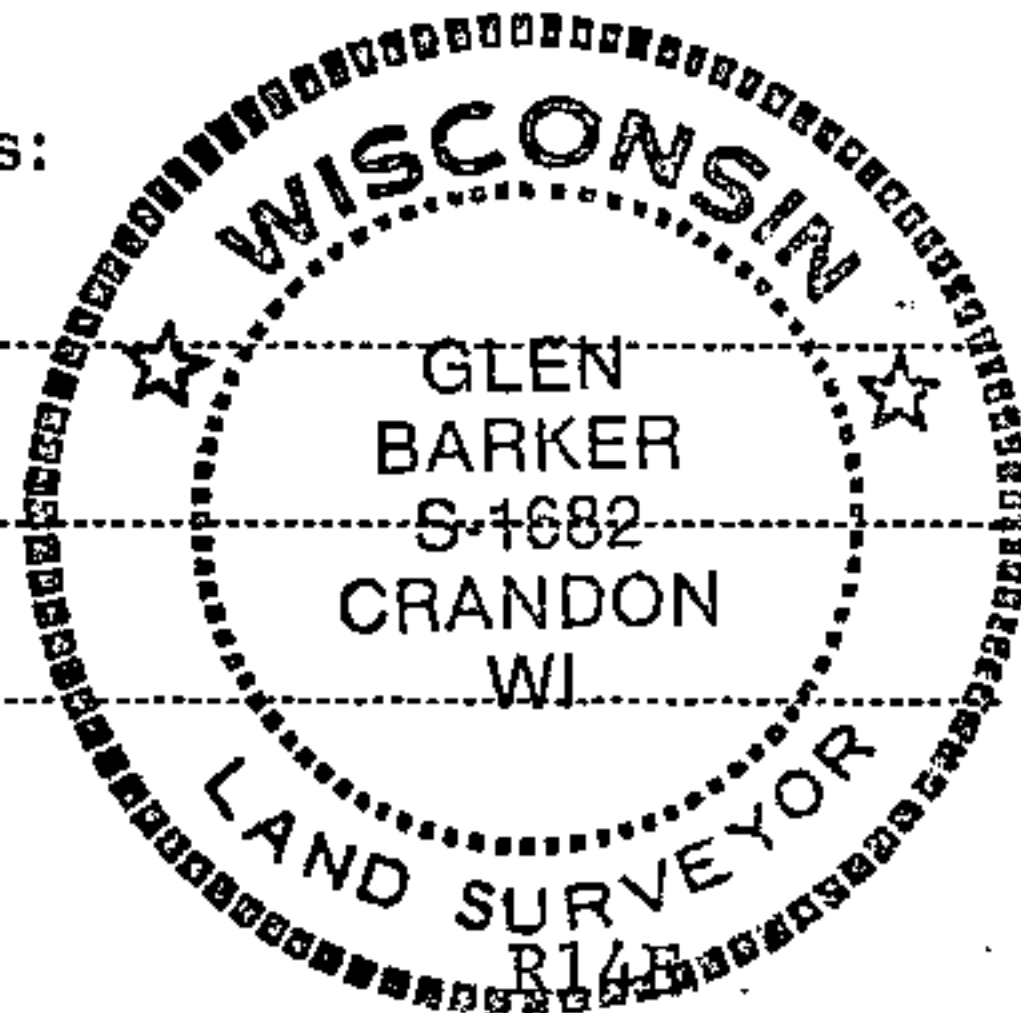
State of Wisconsin }
County of Forest } ss.

I, Glen Barker, do hereby certify that on the 10th day of December, 1984, I ~~found~~ ^{established} ~~re-established~~ the SE 1/16 corner of Section 30 Township 38, North, Range 14 East, Fourth Principal Meridian, as described hereon; and that from this evidence I established a new monument and accessories as described hereon to perpetuate the original location of this corner.

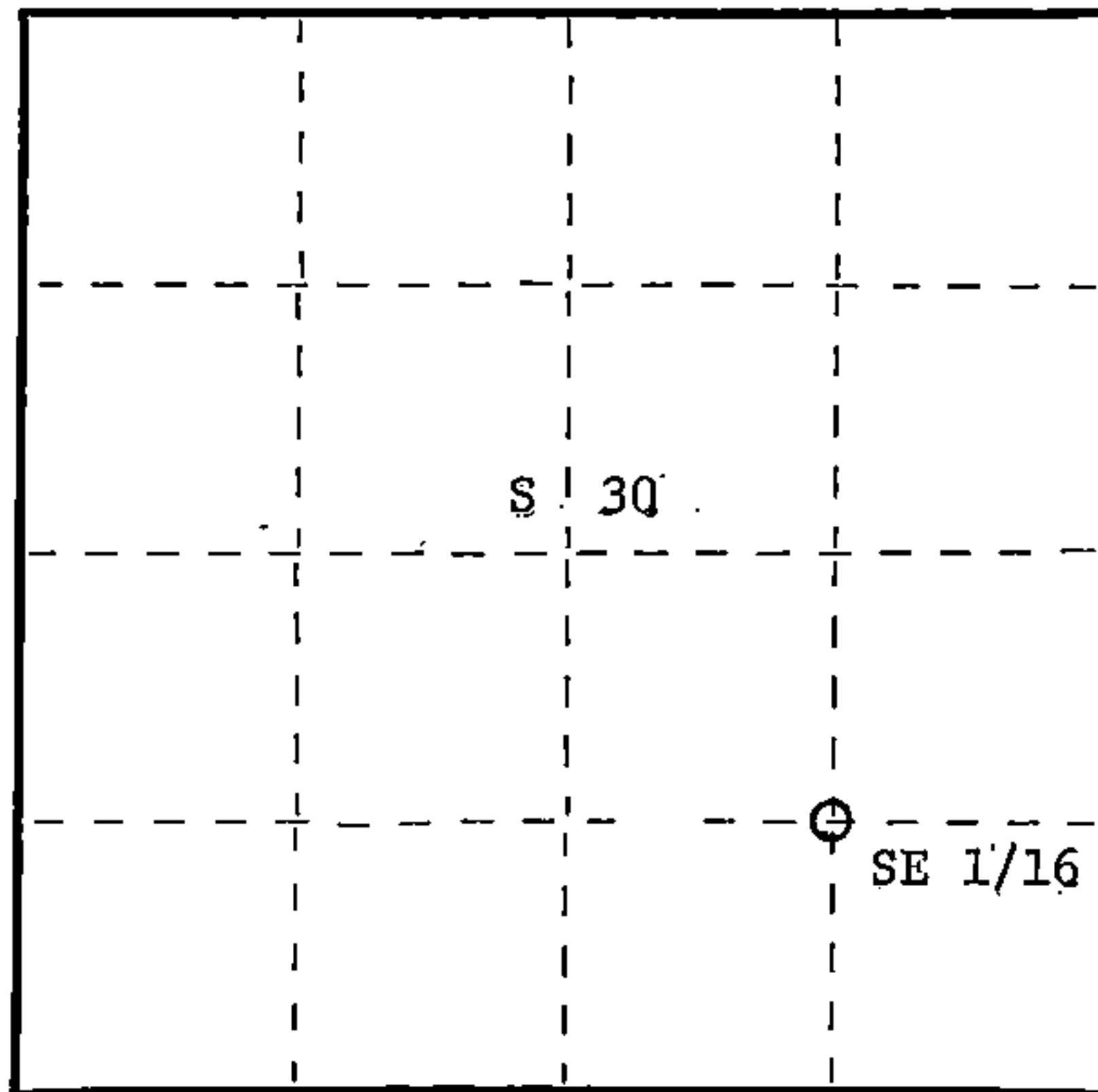
Resident witnesses:

N. Spiess

R. Lundt



T38N



○ = Corner monument restored.

History of original corner establishment:
No evidence of any previous corner.

Description of corner evidence found:

Corner established by subdivision of the SE 1/4 Section 30.
Location of SE 1/16 is 1296.33' of SC 1/16 and 1311.34' of EC 1/16.

Description of monument and accessories I established to perpetuate the original location of this corner.

Set a 1" iron pipe with 2" diameter alloy cap stamped: S1682
Monument projects 18" above ground. T38N

Marked NBTs:

Sugar 7" N56E 15.32' SE 1/16 S30
Sugar 6" N72W 30.41' R14E

CPI - 1984

Dated at Rhineland, Wis., this 6th day of February, 1985.

Signature Glen Barker Title Registered Land Surveyor Registration No. 1682
(County Surveyor, Registered Land Surveyor, or other duly authorized official)

Office of Register of Deeds, County of Forest, I hereby certify that the within instrument was filed in this office for record on the 22nd day of February, 1985 at 2:15 o'clock P. M.

Paul Aschenbrenner
(Register of Deeds)

By _____ Deputy

Document Number **127512**

FORM 985 H. C. MILLER CO., MILWAUKEE

0101064184H