

CERTIFIED LAND CORNER RESTORATION

State of Wisconsin

County of Forest

SS.

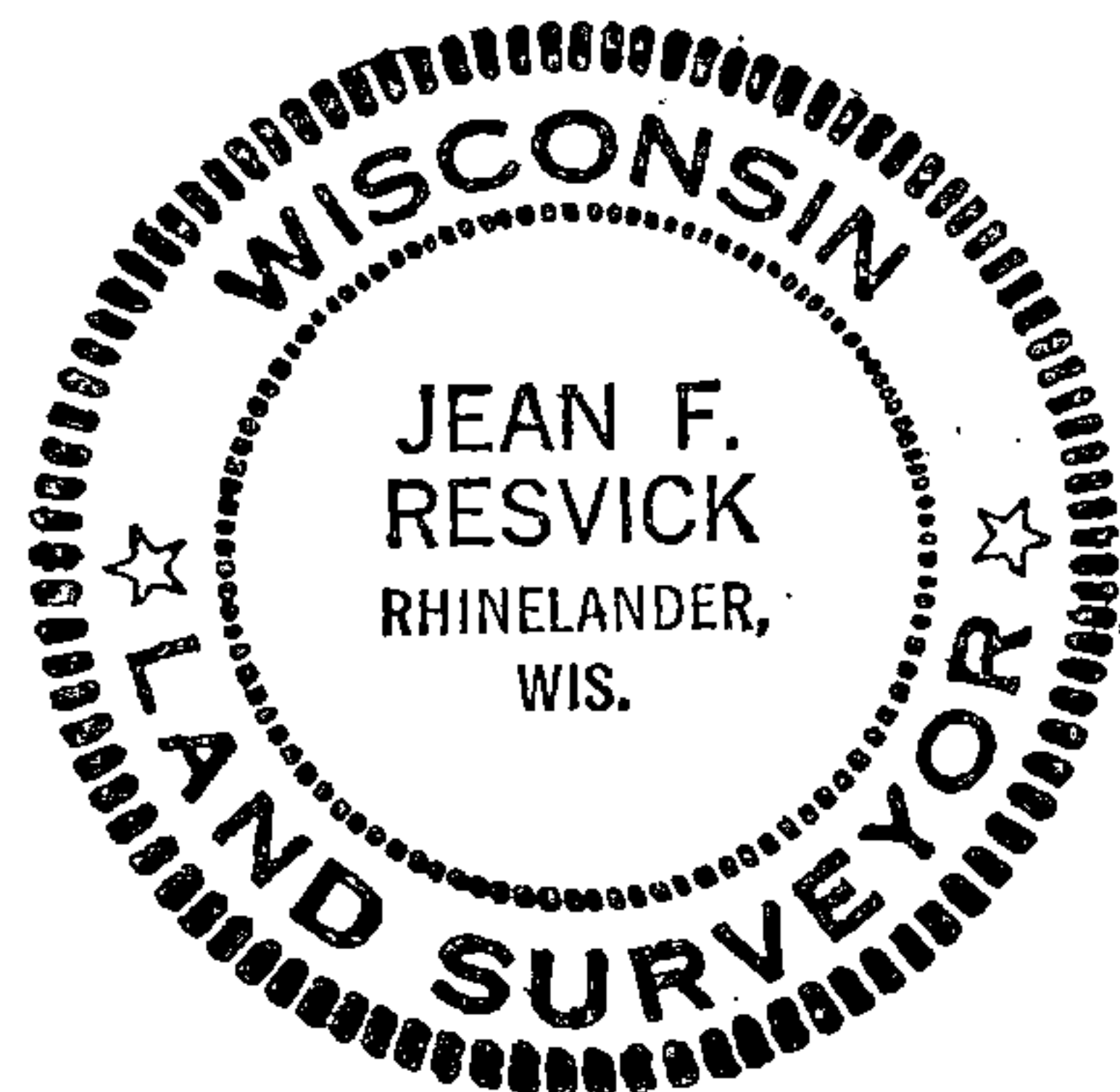
I, Jean F. Resvick, do hereby certify that on the 26th day of October, 1966,
I found evidence of the Northeast Section corner of Section 31
Township 38 North, Range 14 East, Fourth Principal Meridian, as described
hereon; and that from this evidence I established a new monument and accessories as described hereon to per-
petuate the original location of this corner:

Description of original monument and accessories and subsequent restorations:

80.00 chains north between Sections 31 and 32 set post for
section corner of Sections 29, 30, 31 and 32.

Hemlock 12", N50°W, 14 lks.

Birch 12", N40°E, 35 lks.

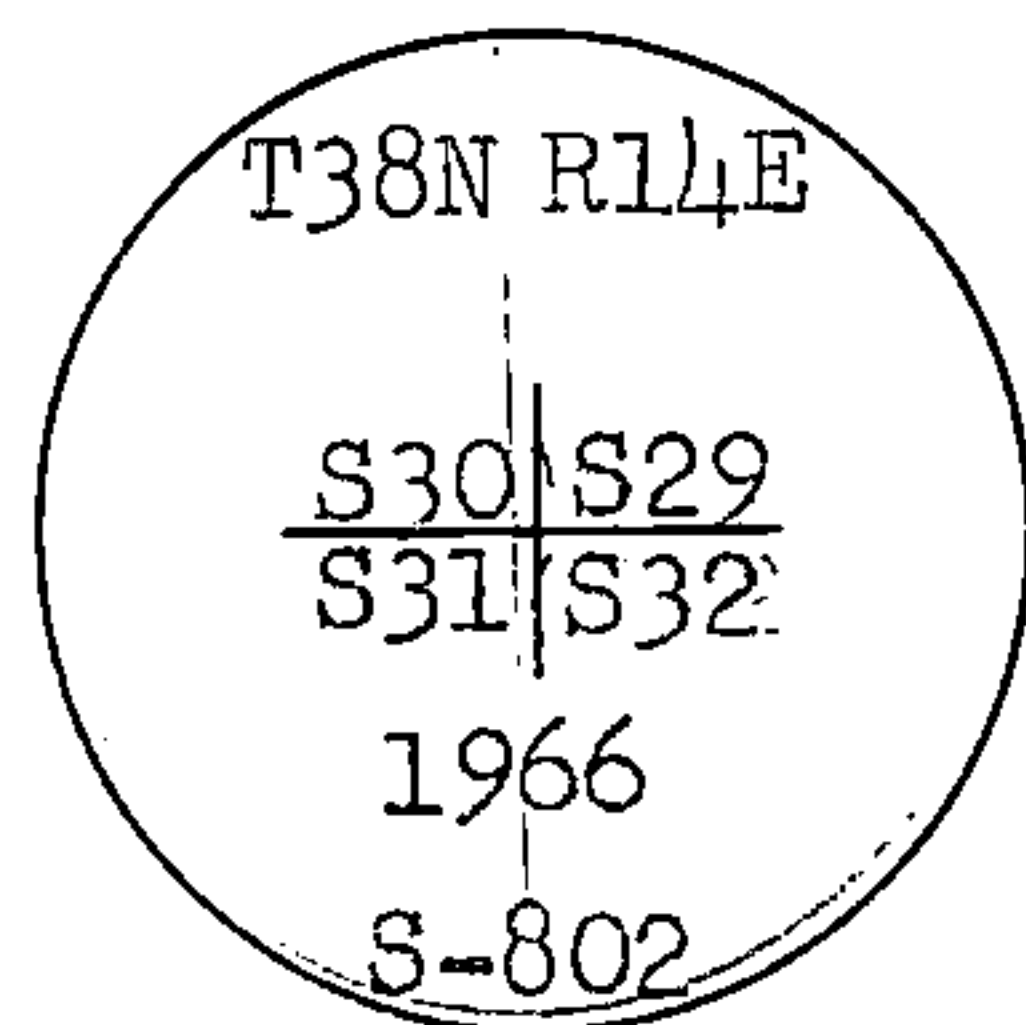


Description of corner evidence found:

1. 4x4 scribed cedar post leaning against tree, point of post found in place.
2. Conservation poster on hemlock just south of post dated 9/ /55
3. Hemlock stump bears N50°W, 9.7 ft. from post. Ax marks on stump.
No scribing could remain in its decayed condition.
4. N40°E, 23.1 ft. from post, stump hole.

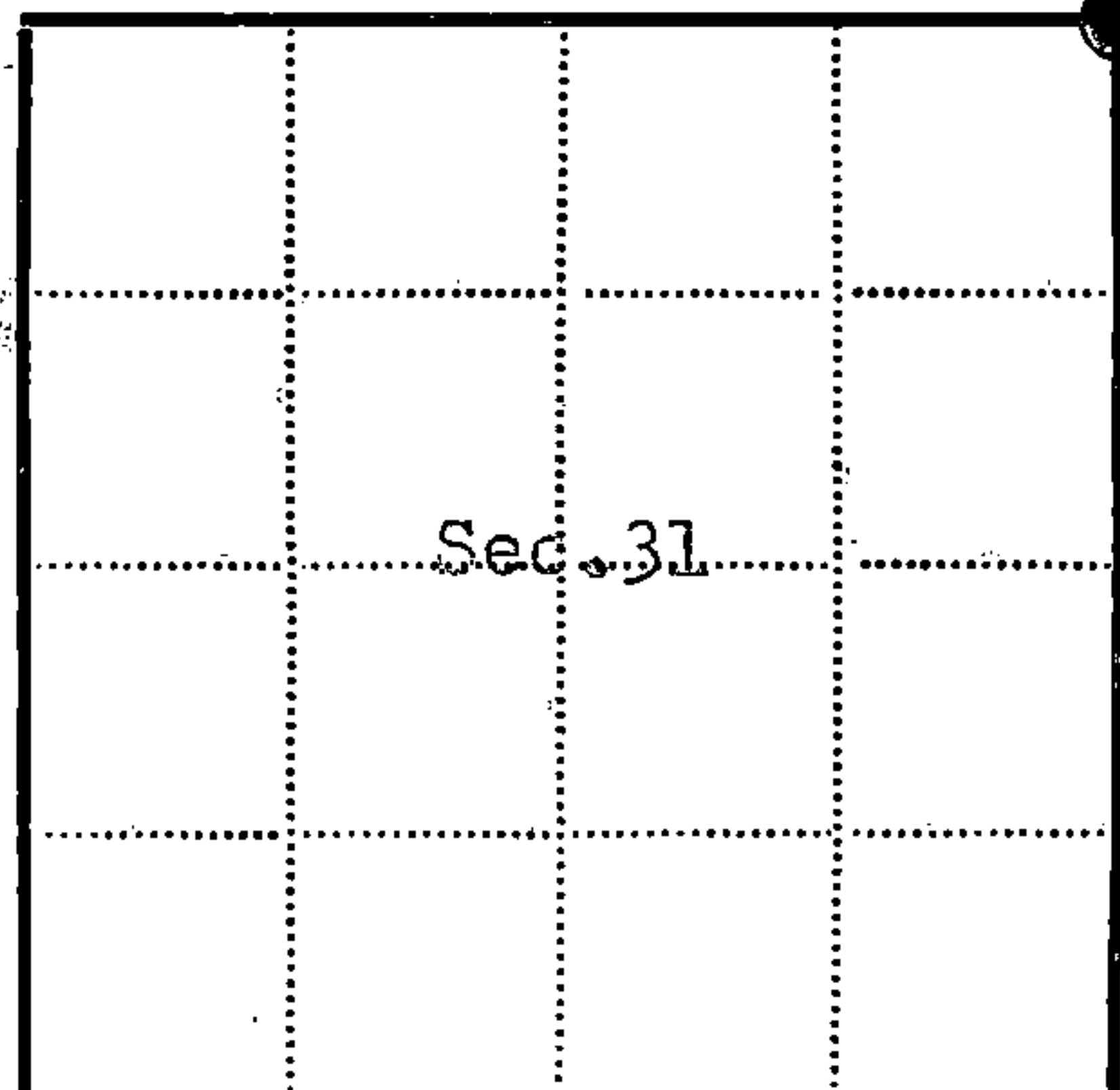
Description of monument and accessories I established to perpetuate the original location of this corner:

Replace point of 4x4 post with 2 inch inside diameter, galvanized iron pipe,
5 feet long, flanged at bottom, filled with concrete.
With brass tablet marked:



From which the following blazed and scribed new bearing trees bear:

- Black ash 4", N61°E, 24.02 ft., 36.39 lks.
Hemlock 7", S51°E, 39.91 ft., 60.47 lks.
Yellow birch 5", S28°W, 21.42 ft., 32.45 lks.
Maple 4", N28°W, 16.83 ft., 25.50 lks.



● = Corner monument restored

□ =

Resident witnesses.....

Dated at Rhineland Wisconsin, this 6th day of Feb
1967.

Signature Jean F. Resvick Title Cadastral Surveyor
(County Surveyor, Registered Land Surveyor, or other duly authorized official)

Surveyors Registration No. S-802

Doc. No. 92684

Office of Register of Deeds County of Forest

I hereby certify that the within instrument was filed in this office for record
on the 2nd day of March, 1967, and was filed in Book
No. 1 Page No. V-5 of County Records.

Signature Eugene Stetson Title Register of Deeds

Township 38 North, Range 14 East, Section 31, Index No. V-5, Page No. 1

4381430 0000

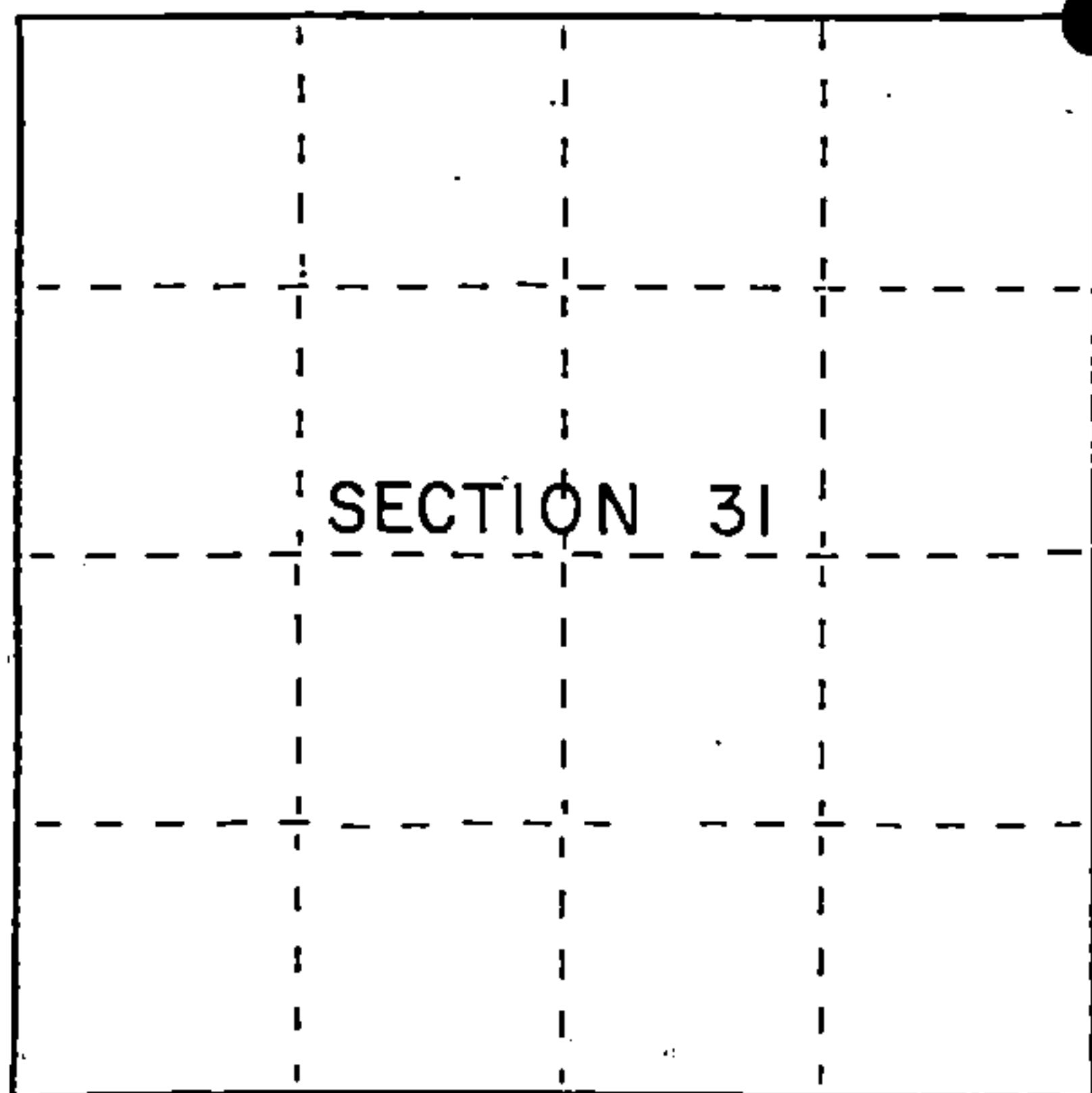
U.S. PUBLIC LAND SURVEY MONUMENT RECORD

Index No. V-5

State of Wisconsin }
County of Forest } ss.

I, Gary L. Pisoni, do hereby
certify that on the 16th day
of January, 1995, I found
evidence of the Northeast Section
corner of Section 31
Township 38, North, Range
14 East, Fourth Principal Meridian,
as described hereon; and that from this evidence
I established a new monument and accessories
as described hereon to perpetuate the original
location of this corner.

Resident witnesses:



● = Corner monument restored.

History of original corner establishment:

Original Government Survey in 1865 by James L. Nowlin. At 80.00 chs., set Section Corner Post from which the following bear; Hemlock, 12", N50°W, 14 lks., Birch, 12", N40°E, 35 lks.

In 1966, Jean Resvick, RLS, with the Forest Service, found a 4" X 4" scribed cedar post and original bearing tree evidence. In place of post, set a 2" diameter galvanized iron pipe, 5 feet long, with a brass cap stamped to identify the corner. Blazed and scribed the following new bearing trees;

Black Ash	4"	N61°E	24.02 feet
Hemlock	7"	S51°E	39.91 feet
Y. Birch	5"	S28°W	21.42 feet
Maple	4"	N28°W	16.83 feet

Description of corner evidence found:

Found monument and bearing trees as described above;

Black Ash	6"	N61°E	23.85 feet
Hemlock	8"	S51°E	33.29 feet
Y. Birch	7"	S28°W	21.42 feet
Red Maple	5"	N28°W	16.75 feet
Wood Sign Post		S61°W	1.80 feet

Description of monument and accessories I established to perpetuate the original location of this corner.

Set a Steel Sign Post, N61°E, 1.55 ft. from monument.

Dated at Iron River, MI, this 5th day of March, 1995

Signature Gary L. Pisoni Title Land Surveyor Registration No. S-1634
(County Surveyor, Registered Land Surveyor, or other duly authorized official)

Office of Register of Deeds, County of Forest, I hereby certify that the within
instrument was filed in this office for record on the 20th day of March, 1997
at 1:30 o'clock P M.

(Register of Deeds)

By [Signature] Deputy

FORM NO. 985-A

H.C. Miller Company

Stock No. 26273

158146

4381430000

- (e) Describe any material discrepancy between the location of the corner as restored or reestablished and the location of that corner as previously restored or reestablished by distance and direction. Show the discrepancy on the plan view drawing under (d), above. Show the distances between the corner as previously restored or reestablished and (1) the corner as restored or reestablished, and (2) to at least 2 of the witness monuments shown on the drawing in (d), above.

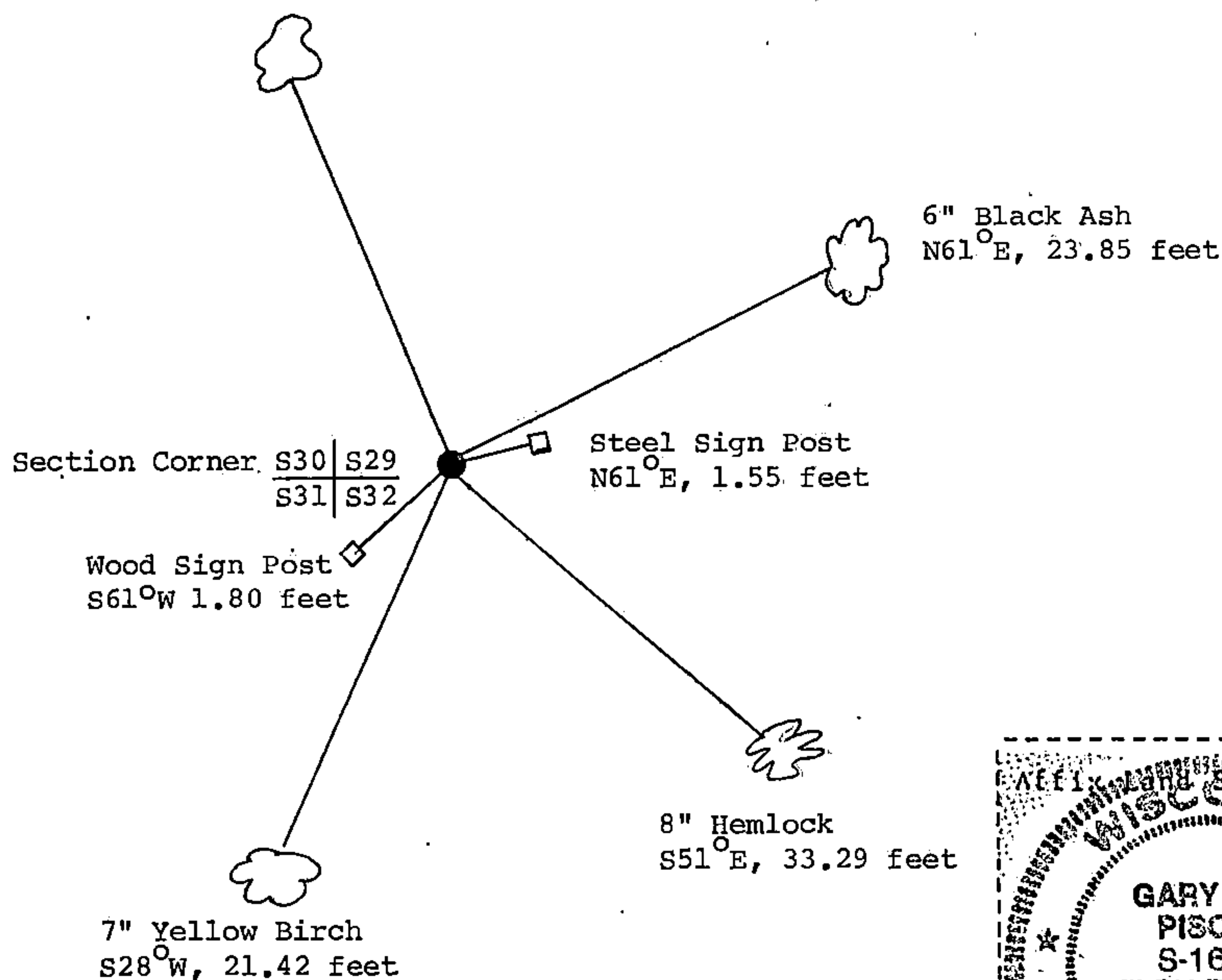
None

- (f) Was the corner restored through acceptance of (1) an obliterated evidence location, or, (2) a found perpetuated location?

Restored through acceptance of a found perpetuated location.

- (g&h) Was the corner reestablished through lost corner proportionate methods? If so, show the method, including the directions and distances to other public land survey corners used as evidence or used for proportioning in determining the corner location?

No
5" Red Maple
N28°W, 16.75 feet



- (i) I, Gary L. Pisoni
(type or print name) certify that the corner location shown on this record was determined by me or under my direction and control and that this U.S. Public Land Survey Monument Record is correct and complete to the best of my knowledge and belief.

Signature

Date

