

CERTIFIED LAND CORNER RESTORATION
U.S. PUBLIC LAND SURVEY RECORD

Index No. T-9
T 9

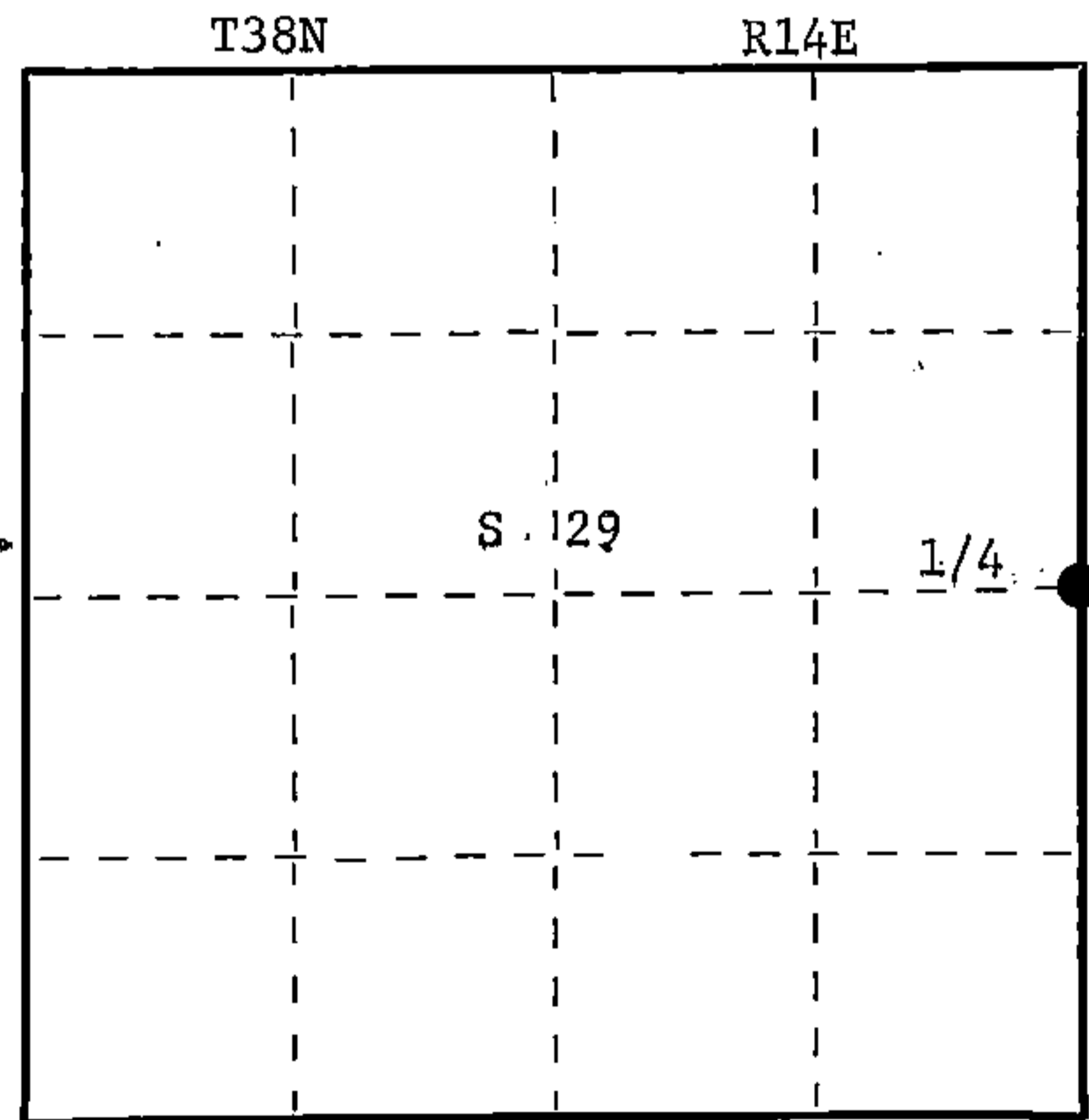
State of Wisconsin }
County of Forest } ss.

I Glen Barker, do hereby certify that on the 21st day of December, 1984, I ~~found~~ established ~~evidence of the~~ Quarter corner of Sections 28 & 29 Township 38 14 East, North, Range 14 East, Fourth Principal Meridian, as described hereon; and that from this evidence I established a new monument and accessories as described hereon to perpetuate the original location of this corner.

Resident witnesses:

N. Spiess

R. Lundt



○ = Corner monument restored.

History of original corner establishment:

Original corner established by James L. Nowlin deputy surveyor in 1864 from which fir 10" bears N40E 25 lks and fir 10" bears N85W 60 lks.

Description of corner evidence found:

Re-established quarter section corner by proportionate method.
Total distance from section corner 20-21-28-29 to section corner 28-29-32-33 is 5263.40'.
Set 1/4 corner 2631.70' intermediate.

Description of monument and accessories I established to perpetuate the original location of this corner.

Set a 2 1/2" A-1 Federal - Forest County monument cap stamped: S1682
Corner sets in ditch of Forest Service Road 15.0' north of T38N
center line. S29 S28
Flush in rock cairn. 1/4
Marked NBTs: R14E
Sugar 6" N90E 55.78' 1984
Sugar 12" S64E 79.40'
Sugar 10" S12E 59.67'
Maple 8" N88W 50.61'

Dated at Rhineland, Wis., this 4th day of February, 1985.

Signature Glen Barker Title Registered Land Surveyor Registration No. 1682
(County Surveyor, Registered Land Surveyor, or other duly authorized official)

Office of Register of Deeds, County of Forest, I hereby certify that the within instrument was filed in this office for record on the 22nd day of February, 1985.
at 2:15 o'clock P. M.

Paul Aschenbrenner
(Register of Deeds)

By _____ Deputy

Document Number 127502

FORM 985 M. C. MILLER CO., MILWAUKEE

43814292000

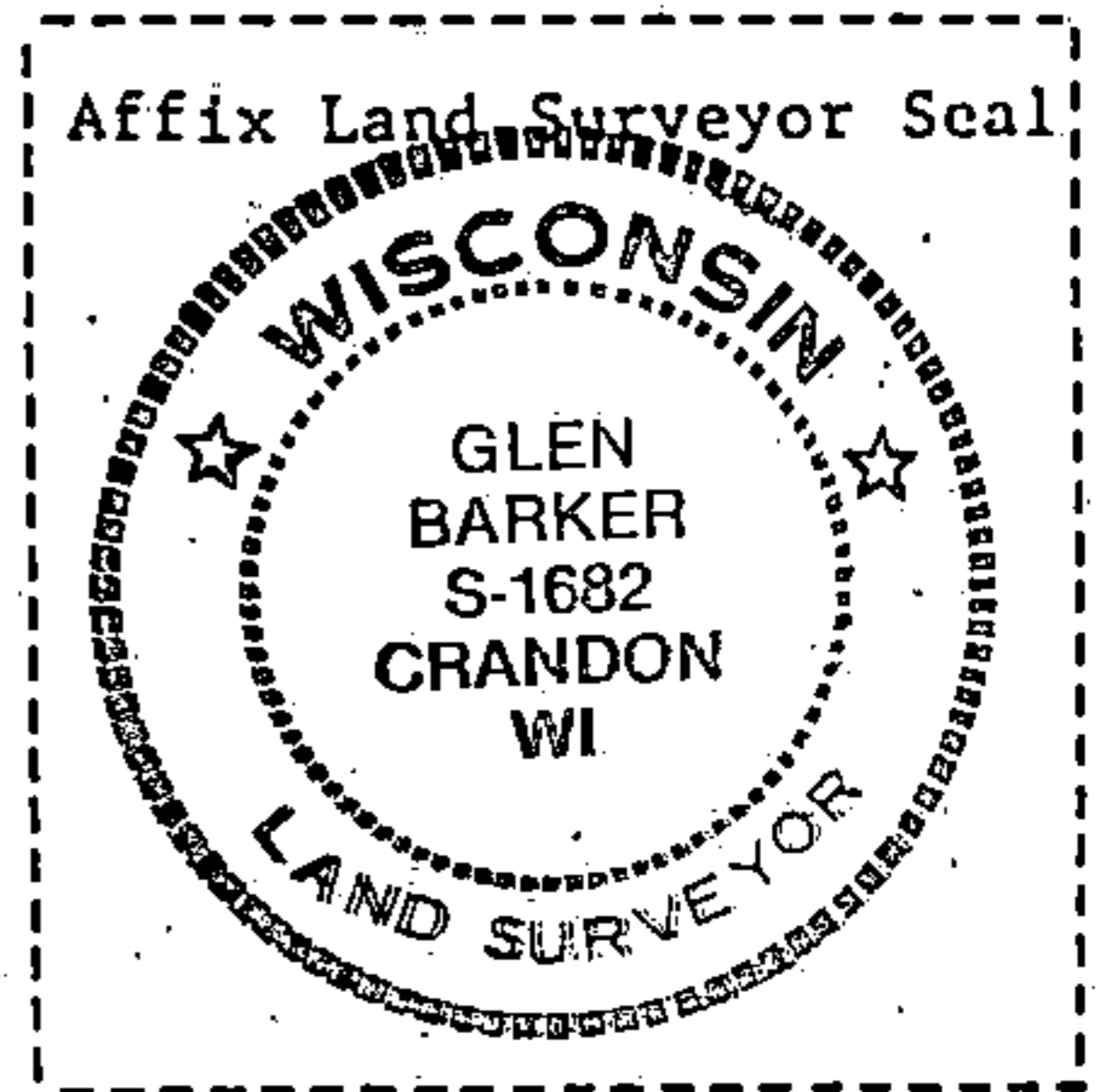
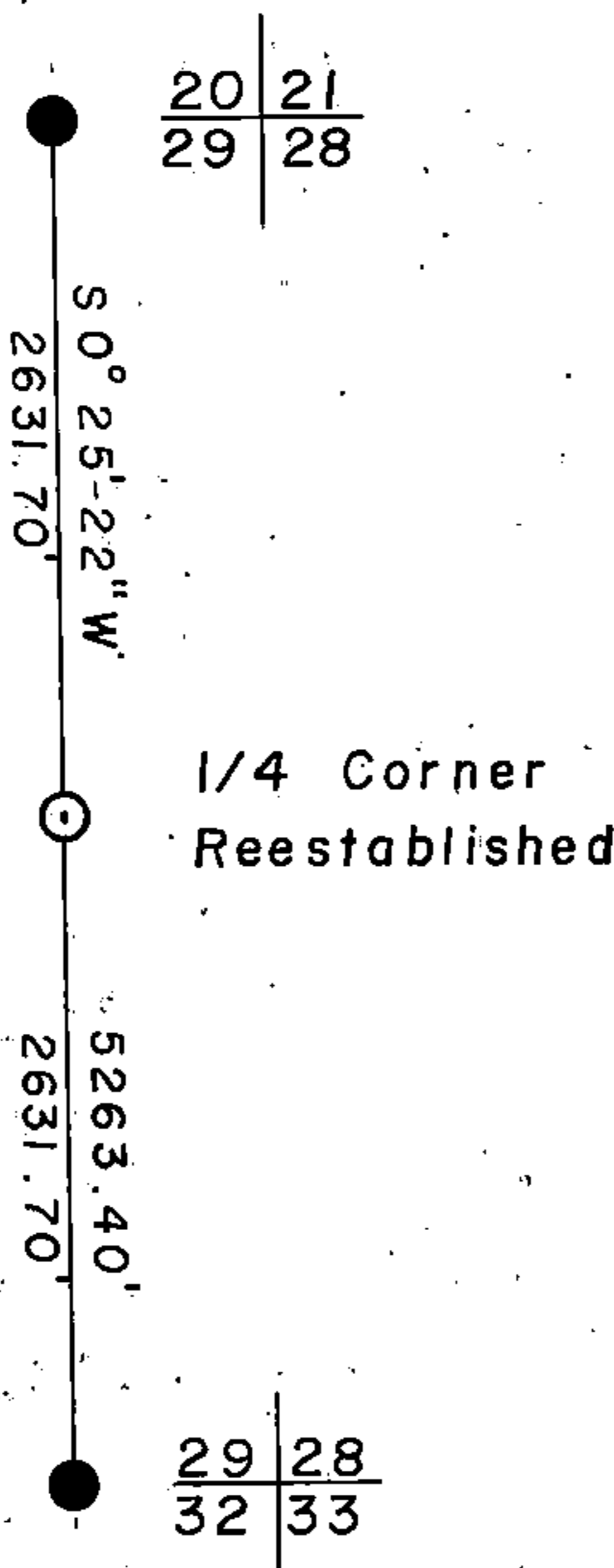
(d) Describe any material discrepancy between the location of the corner as restored or reestablished and the location of that corner as previously restored or reestablished by distance and direction. Show the discrepancy on the plan view drawing under (d), above. Show the distances between the corner as previously restored or reestablished and (1) the corner as restored or reestablished, and (2) to at least 2 of the witness monuments shown on the drawing in (d), above.

See drawing below

(f) Was the corner restored through acceptance of (1) an obliterated evidence location, or, (2) a found perpetuated location?

(g&h) Was the corner reestablished through lost corner proportionate methods? If so, show the method, including the directions and distances to other public land survey corners used as evidence or used for proportioning in determining the corner location?

Proportionate method



(i) I, Glen Barker
 (type or print name) certify that the corner location shown on this record was determined by me or under my direction and control and that this U.S. Public Land Survey Monument Record is correct and complete to the best of my knowledge and belief.

Glen Barker _____ Date 2/4/85

Signature

Date