

Stock No. 26272

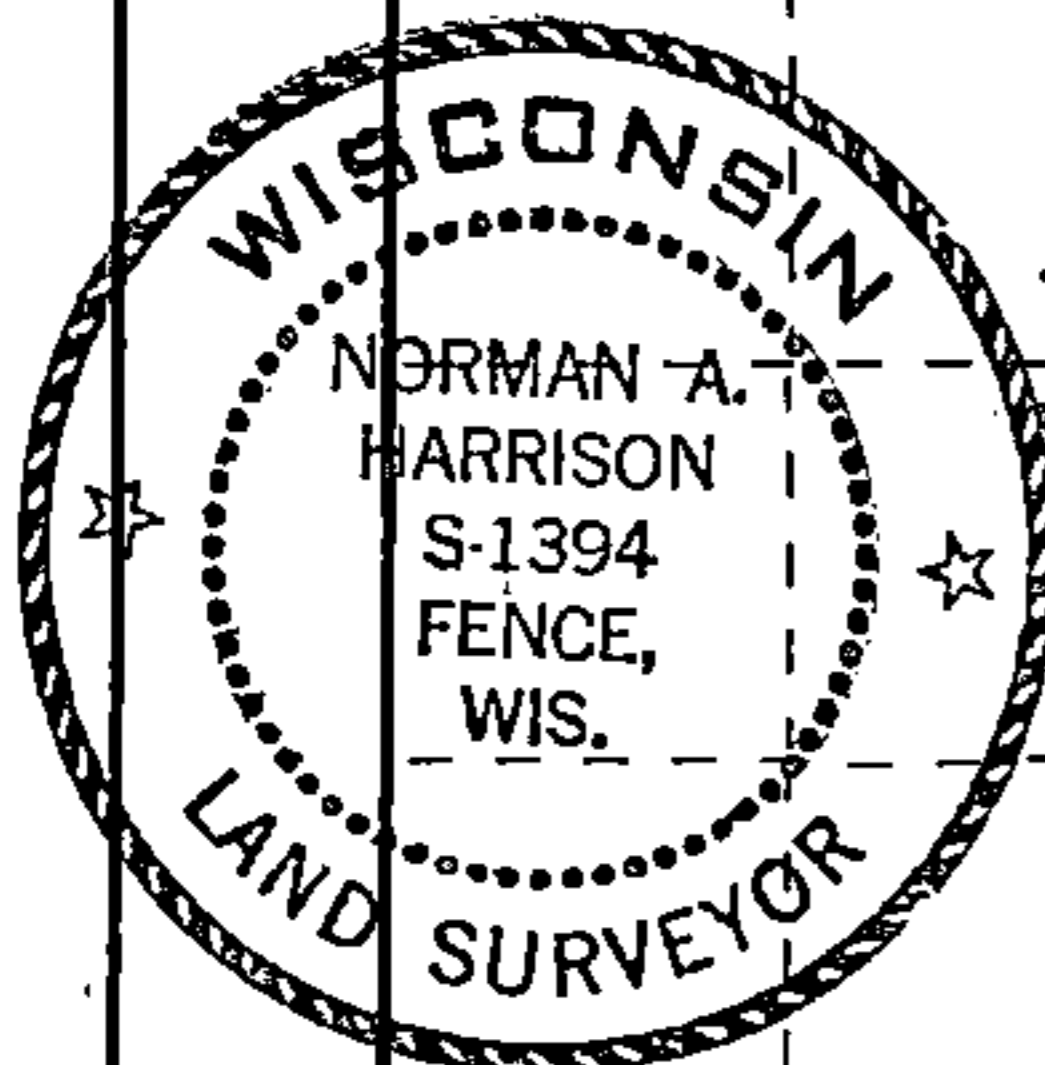
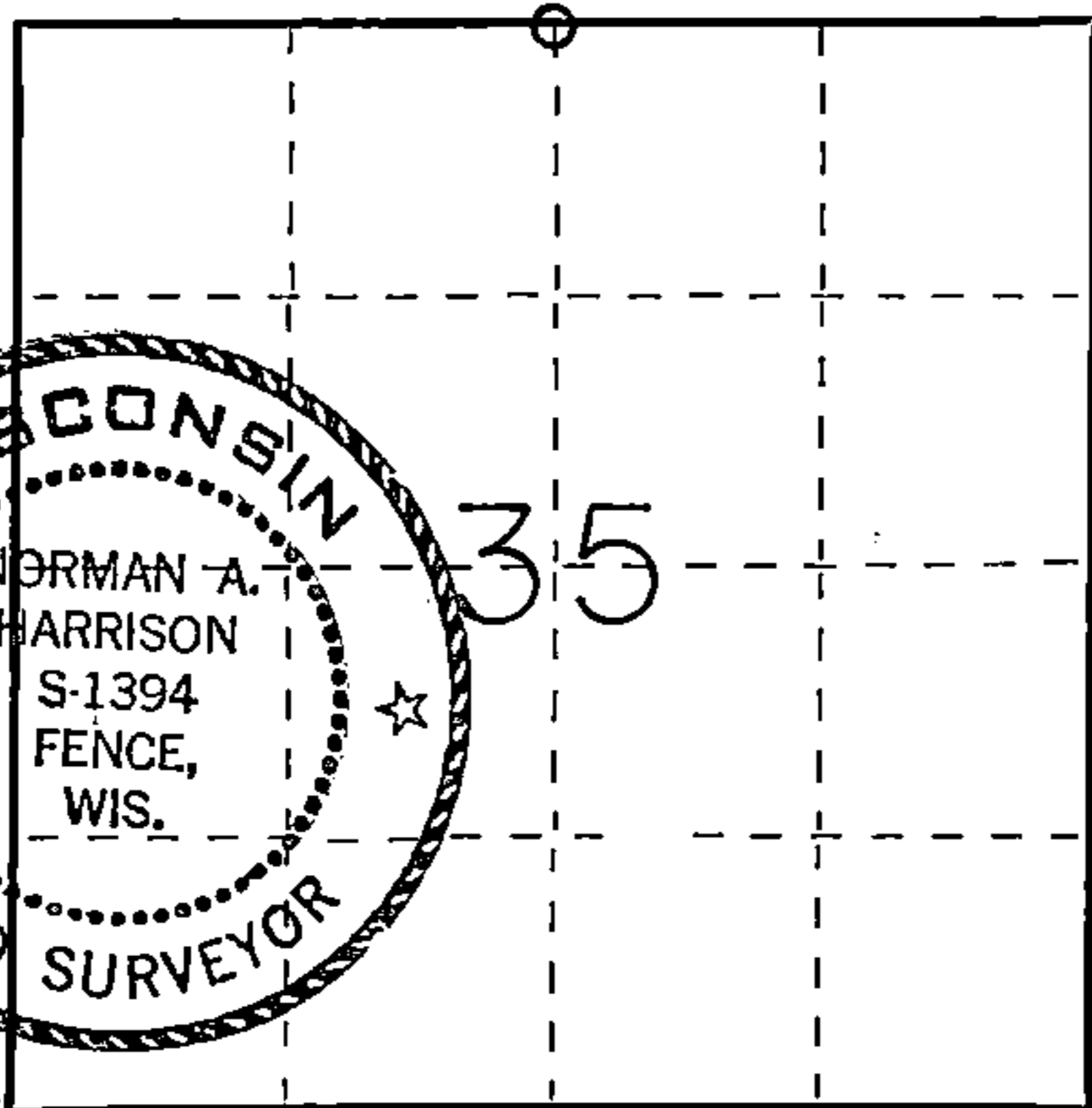
McMurry Company

FORM 985

State of Wisconsin }
County of Forest } ss.

I, Norman A. Harrison, do hereby certify that on the 30th day of June, 1982, I found evidence of the North quarter corner of Section 35 Township 38 North, Range 14 East, Fourth Principal Meridian, as described hereon; and that from this evidence I established a new monument and accessories as described hereon to perpetuate the original location of this corner.

Resident witnesses:



○ = Corner monument restored.

CERTIFIED LAND CORNER RESTORATION

U.S. Public Land Corner

History of original corner establishment: Township 38 North, Range 14 East subdivided by:
James L. Nowlin, Deputy Surveyor Commenced Aug. 30, 1865
Completed Sept. 9, 1865

Original bearing trees

Spruce	8"	N 26 W	12	lks
Birch	12"	S 6 E	13	lks

Description of corner evidence found: No evidence of original corner found.

Chicago and Northwestern railway survey map shows tie to this corner, copy of map viewed at Federal Forest Station, Laona, Wis.

Plat of Ross, 1905 by N.H. Smith shows same to railway track.

Field Notes of N.H. Smith, viewed at Paul Smith's office at Athelstané, Wis.

Old fence lines running southerly and westerly from corner

Description of monument and accessories I established to perpetuate the original location of this corner.

Corner set from information on Chicago and Northwestern railway survey map.

Position of corner verified by old fence lines running southerly and westerly from corner as set, also by distance to center line of Highway "139" as determined by field notes of N.H. Smith and Highway "139" plans, Project no. S 0709 (1)

Bearing trees and objects, magnetic bearings. Corner set April 7, 1983

5/8" re-rod North 8.95'

northwest corner of the most northwesterly 12" square

concrete footing from the old saw mill S 83° 10' E 28.18'

abandon power pole, partly burned S 38° 20' E 60.0'

5/8" re-rod S 1° 58' W 18.05'

power pole no. N64 1364 40 S 65° 20' W 75.25'

1" iron pipe set 0.2' below road surface, in E'ly wheel track S 87° 33' W 30.00'

Dated at Fence, Wis, this 5th day of May, 1983.

Signature *Norman A. Harrison* Title *Surveyor* Registration No. *1394*
(County Surveyor, Registered Land Surveyor, or other duly authorized official)

Office of Register of Deeds, County of Forest, I hereby certify that the within instrument was filed in this office for record on the 5th day of May, 1983 at 4:30 o'clock P. M.

Eugene Stately
(Register of Deeds)

By _____ Deputy

DOCUMENT NO. 123316

4381426 0020

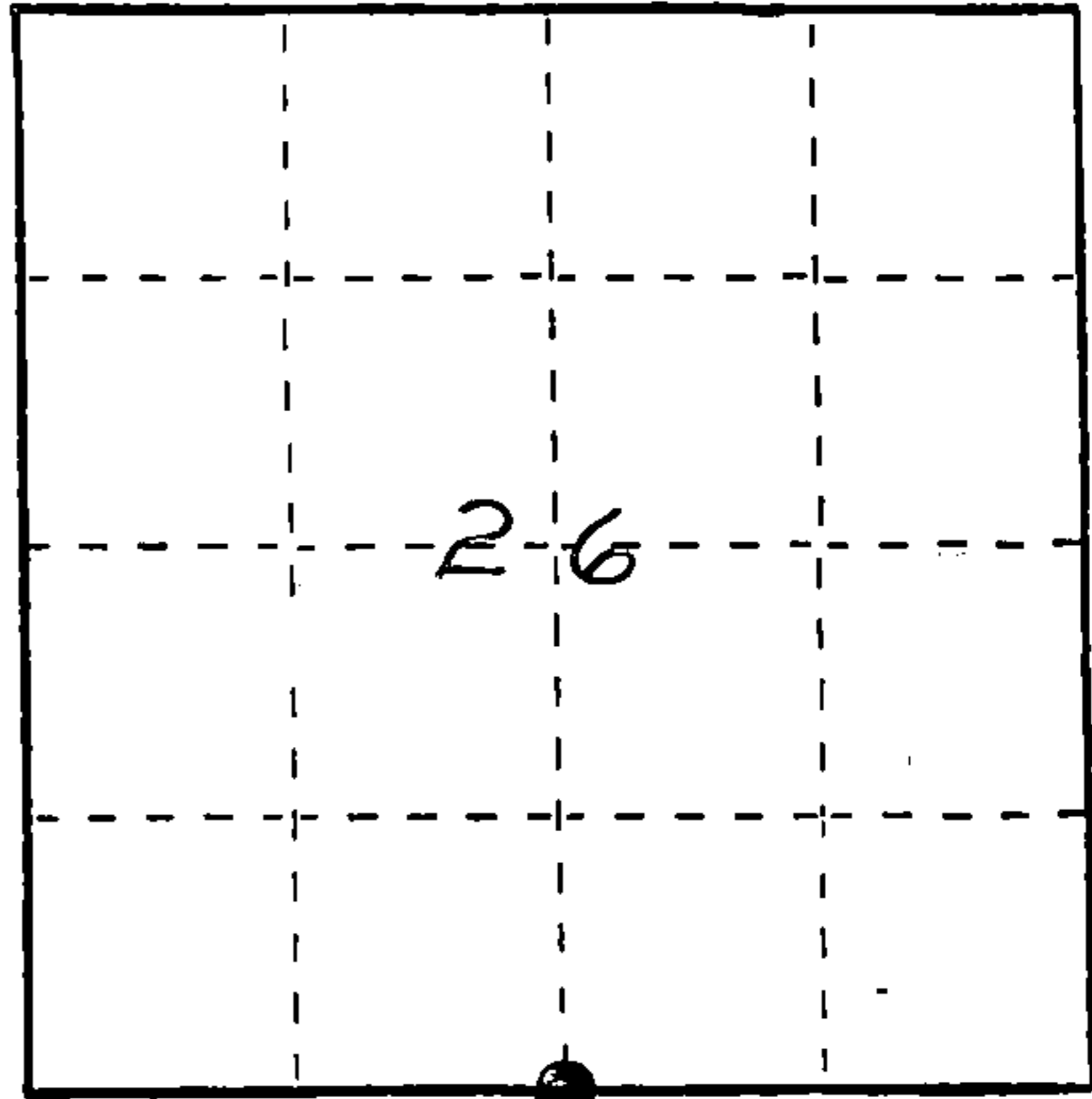
U. S. PUBLIC LAND SURVEY MONUMENT RECORD

INSTRUCTIONS: This record shall show the location of the corner and shall include all of the following nine elements (a through i).

- (a) Identify the corner by reference to the U.S. public land survey system.
- = Corner monument restored.

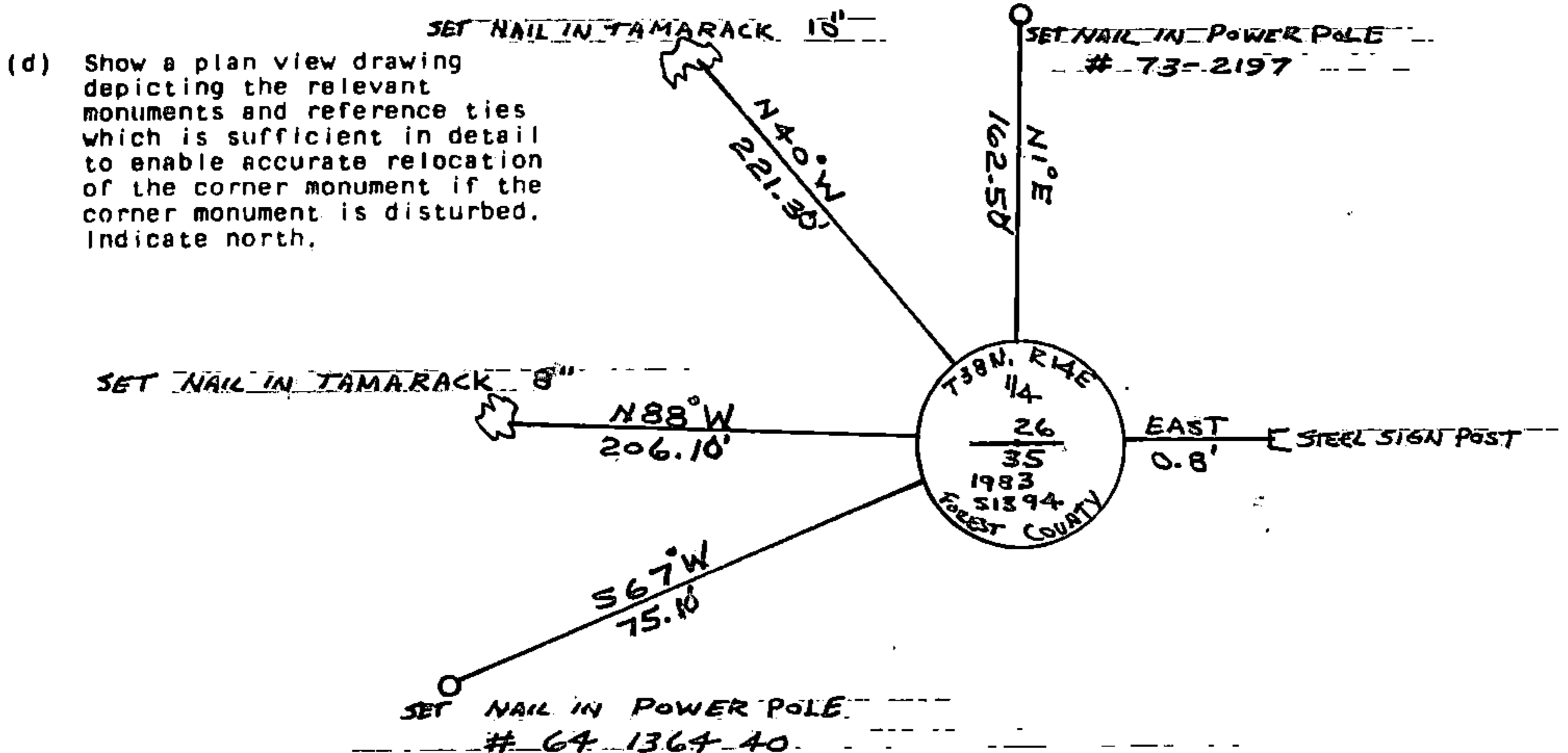
South One Quarter Corner of Section 26, T38N, R14E

REGISTER'S OFFICE
Forest County, Wis.
Received for record this 5th day
of November A.D., 1986 at
3:50 o'clock P.M. and recorded
in Vol. CORNER RESTORATIONS
page V-19
Dual Aschenbrenner
Register of Deeds



- (b) Describe any record evidence, monument evidence, occupational evidence, testimonial evidence or any other material evidence you considered, and whether the monument was found or placed.
In 1865 James L. Nowlin set wood post with the following BTs: Spruce 8", N26°W, 17 links, Birch, 12", S6°E, 12 links.
Found Forest County 2-1/2" diameter aluminum pipe with 3" diameter aluminum tablet stamped to identify corner.

- (c) In the plan view drawing below, provide reference ties to at least 4 witness monuments, or, if the location is within a municipality, to at least 2 witness monuments. (Witness monuments shall be made of concrete, natural stone, iron or other equally durable material.) Describe witness monuments.



(e) Describe any material discrepancy between the location of the corner as restored or reestablished and the location of that corner as previously restored or reestablished by distance and direction. Show the discrepancy on the plan view drawing under (d), above. Show the distances between the corner as previously restored or reestablished and (1) the corner as restored or reestablished, and (2) to at least 2 of the witness monuments shown on the drawing in (d), above.

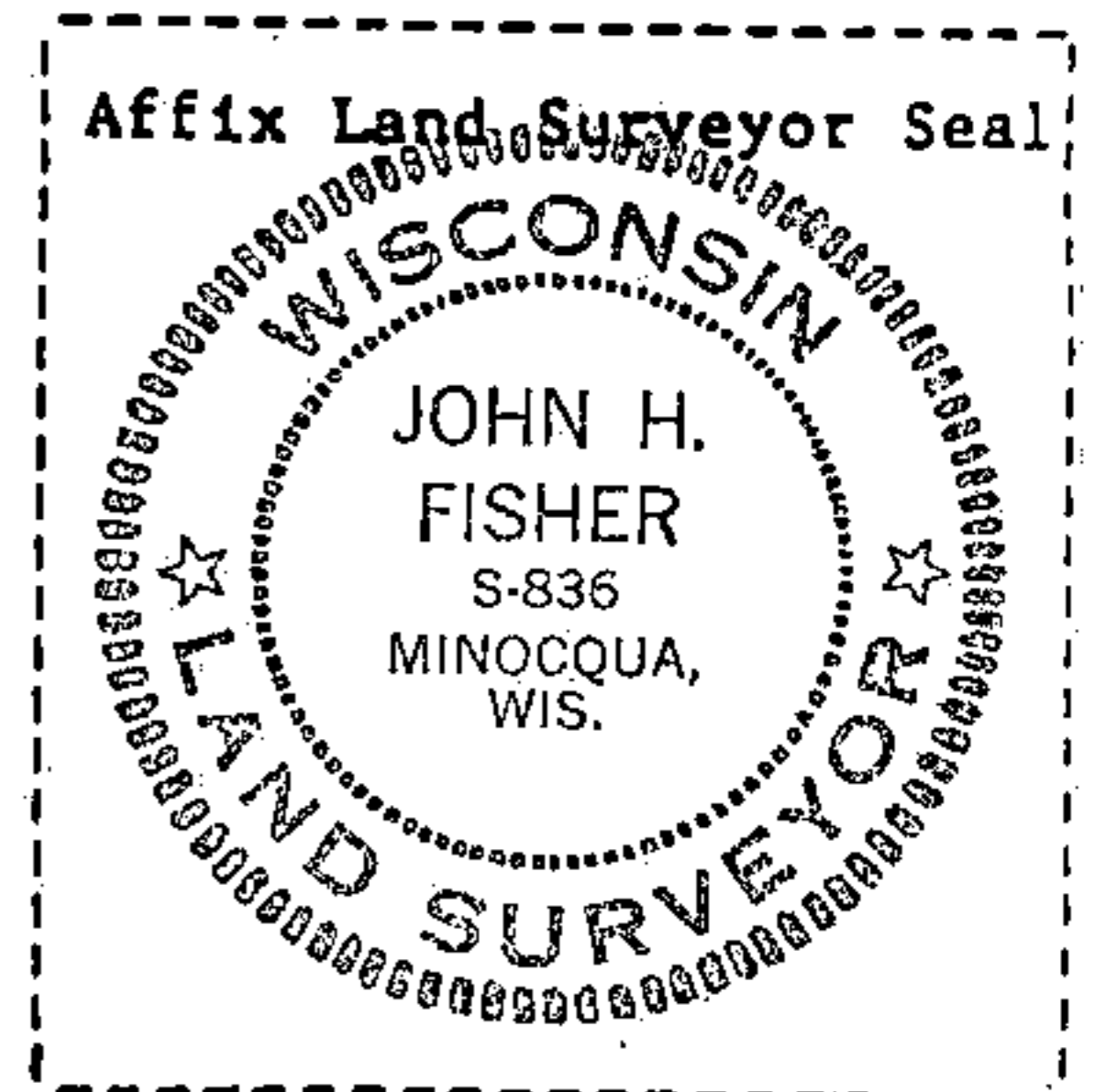
NONE

(f) Was the corner restored through acceptance of (1) an obliterated evidence location, or, (2) a found perpetuated location?

Through Acceptance of a perpetuated location found

(g&h) Was the corner reestablished through lost corner proportionate methods? If so, show the method, including the directions and distances to other public land survey corners used as evidence or used for proportioning in determining the corner location?

NO



(i) I, John H. Fisher
(Type or print name) certify that the corner location shown on this record was determined by me or under my direction and control and that this U.S. Public Land Survey Monument Record is correct and complete to the best of my knowledge and belief.

John H. Fisher
Signature

10/15/86
Date