

CERTIFIED LAND CORNER RESTORATION

V-21

V21

Index No.

State of Wisconsin }
County of Forest } ss.

U.S. Public Land Corner
History of original corner establishment: Township 37 North, Range 14 East subdivided by:
James L. Nowlin, Deputy Surveyor
Commenced Aug. 30, 1865
Completed Sept, 9, 1865

I, Norman A. Harrison, do hereby certify that on the 12th day of December, 1983, I found evidence of the Northeast corner of Section 35 Township 38 North, Range 14 East, Fourth Principal Meridian, as described hereon; and that from this evidence I established a new monument and accessories as described hereon to perpetuate the original location of this corner.

Original bearing trees
Sugar 9" N 15 W 23 lks
Sugar 18" N 22 E 22 lks

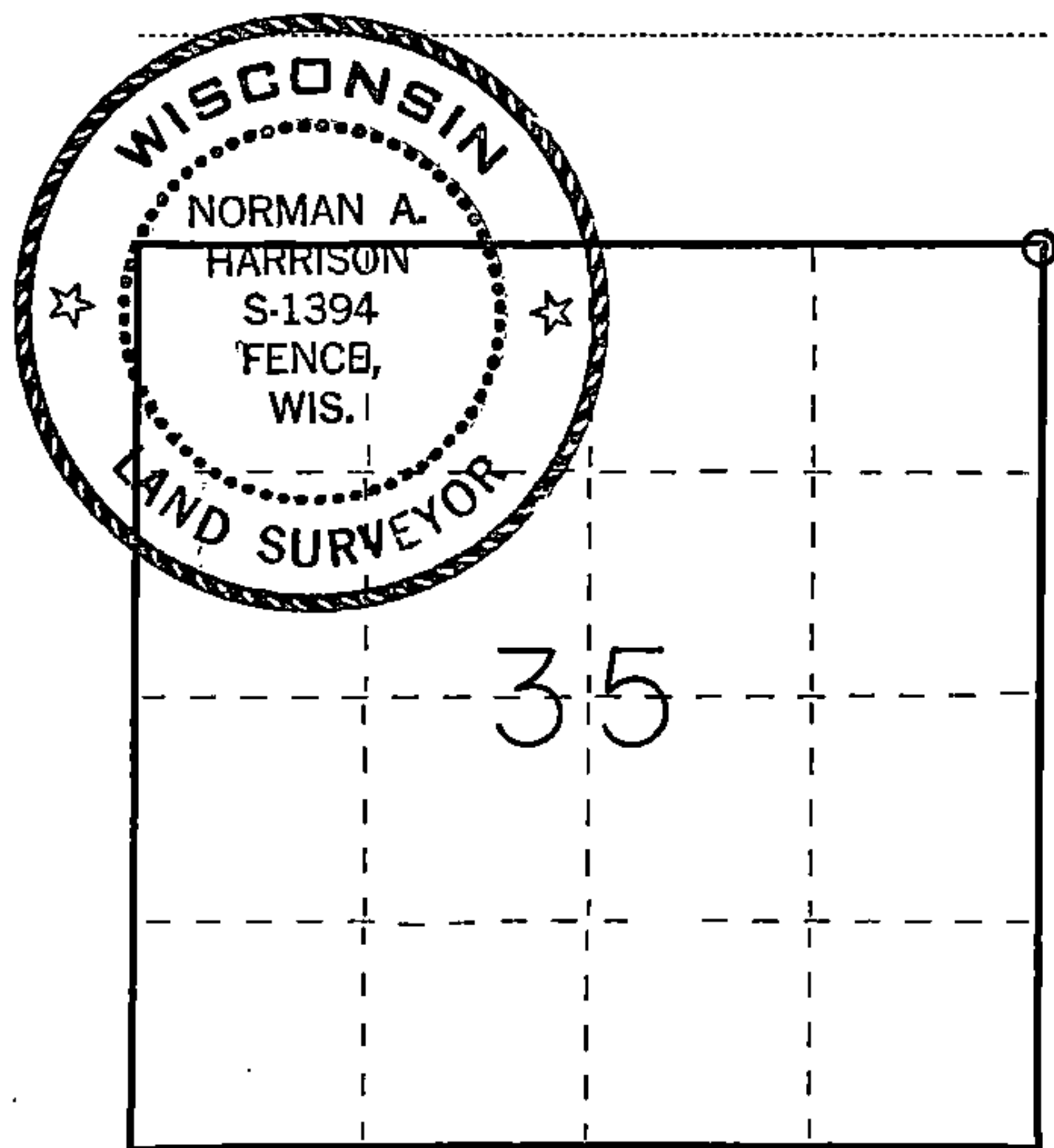
Description of corner evidence found: No evidence of original corner found.
Field notes of N.H. Smith viewed at the office of Paul Smith, Athelstane, Wis.
Highway plans for "139", Project no. S 0709 (1). Wis. Dept. of Transportation, Rhinelander, Wis.
Old fence line from west

Resident witnesses:

.....
.....
.....

Stock No. 26272

FORM 985



○ = Corner monument restored.

Description of monument and accessories I established to perpetuate the original location of this corner.

Corner set at distance from North quarter found in N. H. Smith's field notes and on old fence line from west.

Corner as set is 18.6' from center line of Highway "139". Distance given on Highway plans from center line to corner is 17' ±

Set Forest County aluminum monument at corner in shoulder of road 0.5' below ground surface.

Bearing trees and objects, magnetic bearings. Corner set April 25, 1983

Maple east of road	9"	N 68° 18' E	70.1'
Maple east of road	9"	S 73° 50' E	66.4'
Maple	16"	S 58° 22' W	32.5'
Culvert, C.M.P. center and top	18"	N 5° 27' W	77.20'

Dated at Fence, Wis., this 5th day of May, 1983

Signature: Norman A. Harrison Title: Surveyor Registration No. 1394
(County Surveyor, Registered Land Surveyor, or other duly authorized official)

Office of Register of Deeds, County of Forest
I hereby certify that the within instrument was filed in this office for record on the 5th day of May, 1983 at 4:30 o'clock P.M.

Eugene Stagny
(Register of Deeds)

By Deputy

DOCUMENT NO. 123317

43814760000

U.S. PUBLIC LAND SURVEY MONUMENT RECORD

Index No. V-21

State of Wisconsin }
County of Forest } ss.

I, William B. Cochrane, do hereby certify that on the 26th day of September, 1983, I found evidence of the Northwest Section corner of Section 36 Township 38, North, Range 14 East, Fourth Principal Meridian, as described hereon; and that from this evidence I established a new monument and accessories as described hereon to perpetuate the original location of this corner.

Resident witnesses:

David Brownell

Tony Tillman

History of original corner establishment:

Original Government Survey in 1865 by H. & J. L. Nowlin. North between Sections 35 and 36, 80.00 chains, set Section Corner post, to Sections 25, 26, 35, and 36, from which the following bear:

Sugar	9"	N15°W	23 lks.
Sugar	18"	N22°E	22 lks.

Description of corner evidence found:

No original corner evidence was recovered.

Corner position falls in Hwy 139, and was restored using the measurements as shown on the State Highway Division Job #7115. Plan dated 9/2/47.

Forest County Monument bears, N03°39'13"W, 16.83 feet

Description of monument and accessories I established to perpetuate the original location of this corner. At the restored corner position, set a 2½" diameter aluminum pipe monument, 3 feet long, 3½ feet in the ground, with an aluminum cap stamped: T38N R14E, S25, S26, S35, S36, 1983, S-1107. From which the following new blazed and scribed bearing trees bear:

Maple	13"	N54°E	87.37 feet
Maple	8"	S65°E	68.42 feet
Maple	8"	S46°W	47.14 feet
Reference Monument		N74°W	20.21 feet

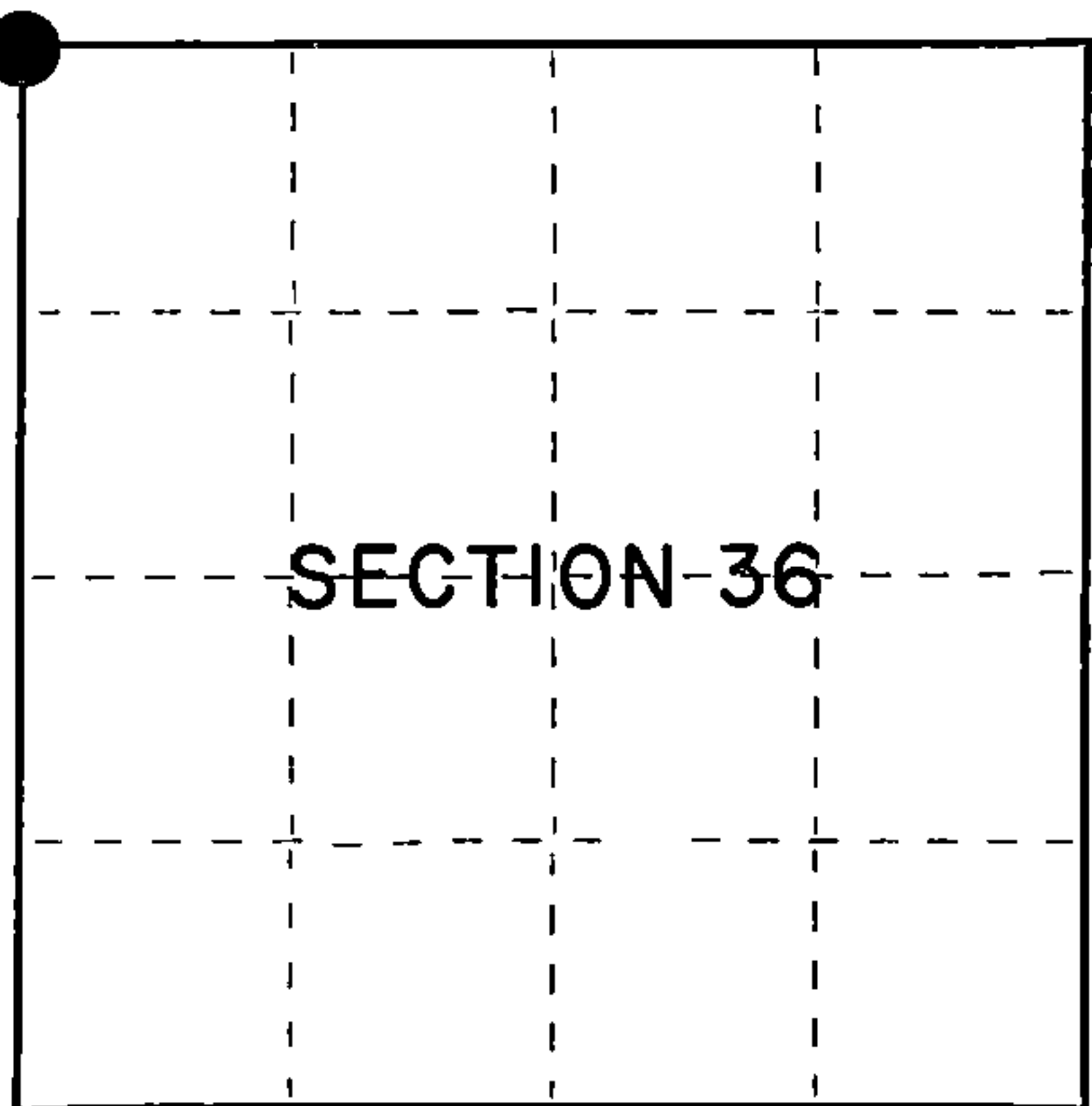
Dated at Hiles, Wis., this 26th day of March, 1985

Signature William B. Cochrane Title Land Surveyor Registration No. S-1107
(County Surveyor, Registered Land Surveyor, or other duly authorized official)

Office of Register of Deeds, County of Forest, I hereby certify that the within instrument was filed in this office for record on the 24th day of April, 1985 at 1:00 o'clock P. M.

Paul Ascherbrenner
(Register of Deeds)

By.....Deputy



○ = Corner monument restored.

FORM NO. 985-A

H.C. Miller Company

Stock No. 26273

Document Number 127907

43814260000

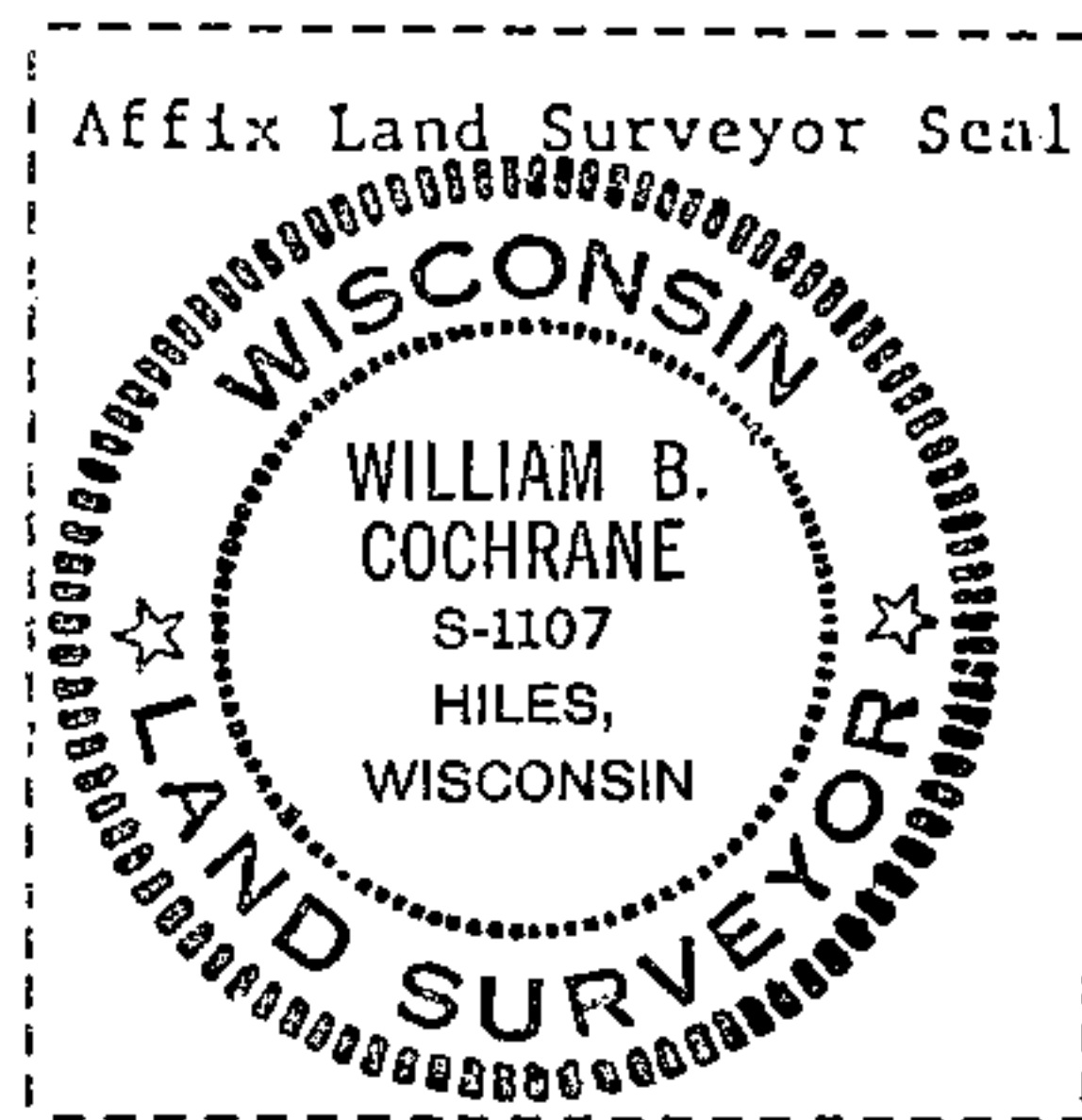
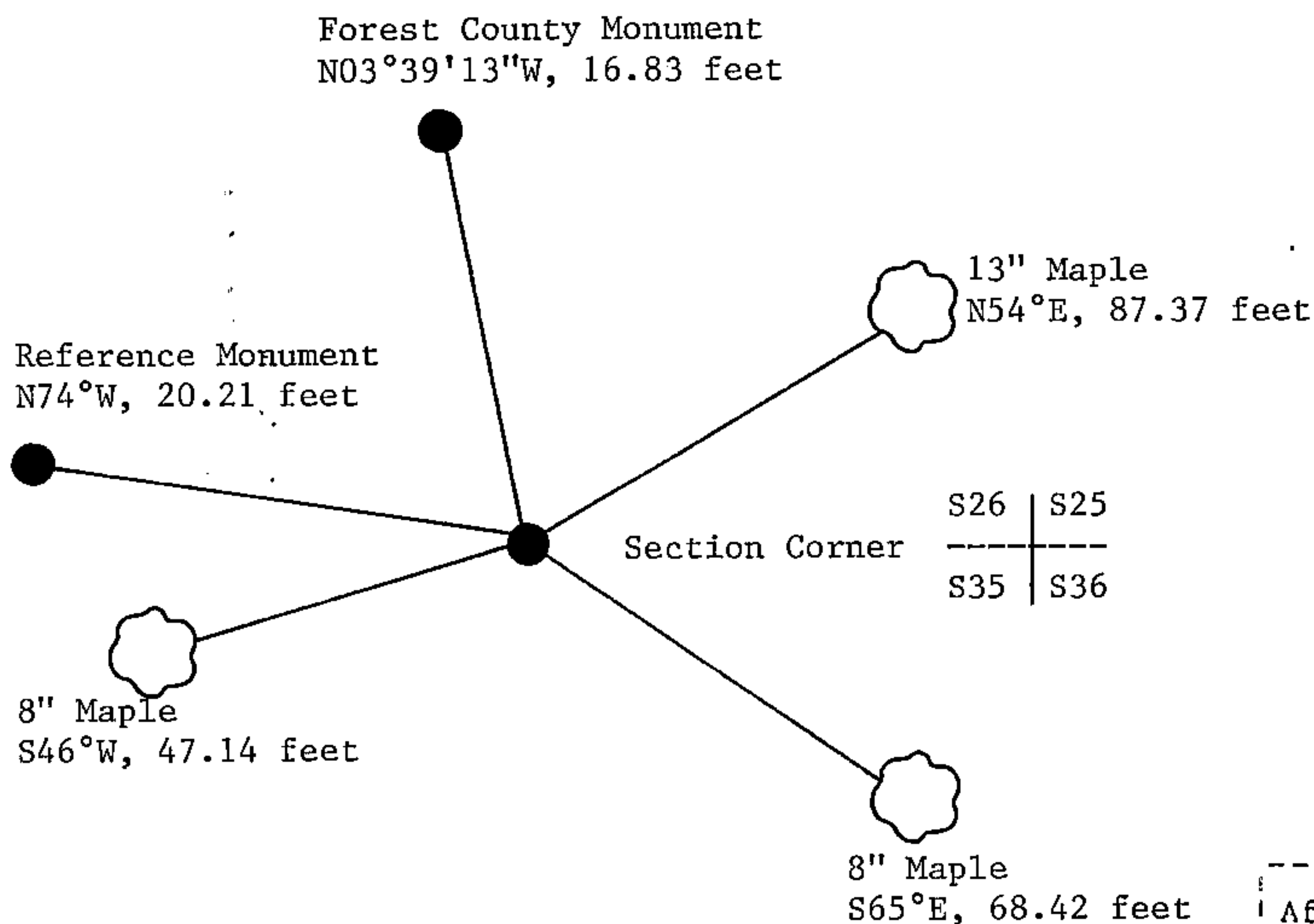
(e) Describe any material discrepancy between the location of the corner as restored or reestablished and the location of that corner as previously restored or reestablished by distance and direction. Show the discrepancy on the plan view drawing under (d), above. Show the distances between the corner as previously restored or reestablished and (1) the corner as restored or reestablished, and (2) to at least 2 of the witness monuments shown on the drawing in (d), above.

See drawing below.

(f) Was the corner restored through acceptance of (1) an obliterated evidence location, or, (2) a found perpetuated location?

Restored from accepted evidence.

(g&h) Was the corner reestablished through lost corner proportionate methods? If so, show the method, including the directions and distances to other public land survey corners used as evidence or used for proportioning in determining the corner location?



(i) I, William B. Cochrane
(type or print name) certify that the corner location shown on this record was determined by me or under my direction, and control and that this U.S. Public Land Survey Monument Record is correct and complete to the best of my knowledge and belief.

William B. Cochrane
Signature

March 26, 1985
Date