

U.S. PUBLIC LAND SURVEY MONUMENT RECORD

Index No. **P-25**

State of Wisconsin }  
County of Forest } ss.

I, William B. Cochrane, do hereby certify that on the 6th day of September, 1983, I found evidence of the East Quarter corner of Section 24 Township 38, North, Range 14 East, Fourth Principal Meridian, as described hereon; and that from this evidence I established a new monument and accessories as described hereon to perpetuate the original location of this corner.

Resident witnesses:

Tony Tillman  
.....  
.....

History of original corner establishment:

Original Government Survey in 1857 by Artemas Curtis. North between Sections 19 and 24, 40.00 chains, set Quarter Corner post to Sections 19 and 24, from which the following bear:

Lynn	14"	N83°W	42 lks.
Y. Birch	14"	S77°E	15 lks.

Description of corner evidence found:

Fence post hole from which fence lines bear North, South, and West.

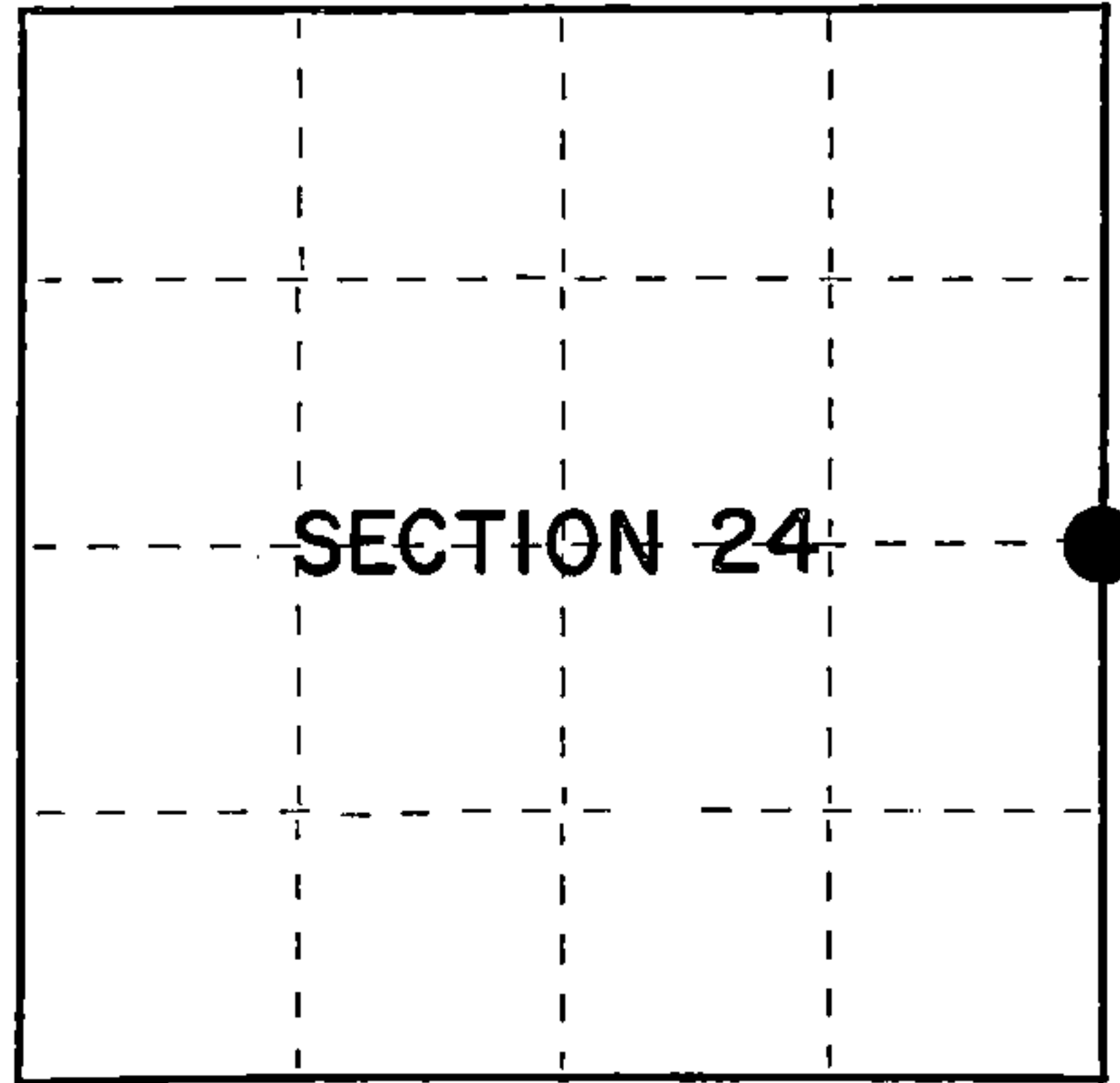
I accept the fence corner as the best available evidence for restoring the corner position.

No original corner evidence was recovered.

Description of monument and accessories I established to perpetuate the original location of this corner.

At fence corner, set a 2½" diameter aluminum pipe monument, 3 feet long, 30 inches, in the ground, with an aluminum cap stamped: T38N, R14E, R15E, S19, S24, 1983, S-1107. From which the following new blazed and scribed bearing trees bear:

R. Pine	5"	N17°E	67.40 feet
Maple	18"	S48°E	54.74 feet
Steel Sign Post		North	1.00 feet



○ = Corner monument restored.

Dated at: Hiles, Wis., this 28th day of March, 1985

Signature William B. Cochrane Title Land Surveyor Registration No. S-1107  
(County Surveyor, Registered Land Surveyor, or other duly authorized official)

Office of Register of Deeds, County of Forest, I hereby certify that the within instrument was filed in this office for record on the 24th day of April, 1985 at 1:00 o'clock P. M.

Paul Ascherbranner  
(Register of Deeds)

By.....Deputy

FORM NO. 985-A  
H.C. Miller Company  
MILWAUKEE, WISCONSIN

Stock No. 26273

Document Number 127901

43814242000

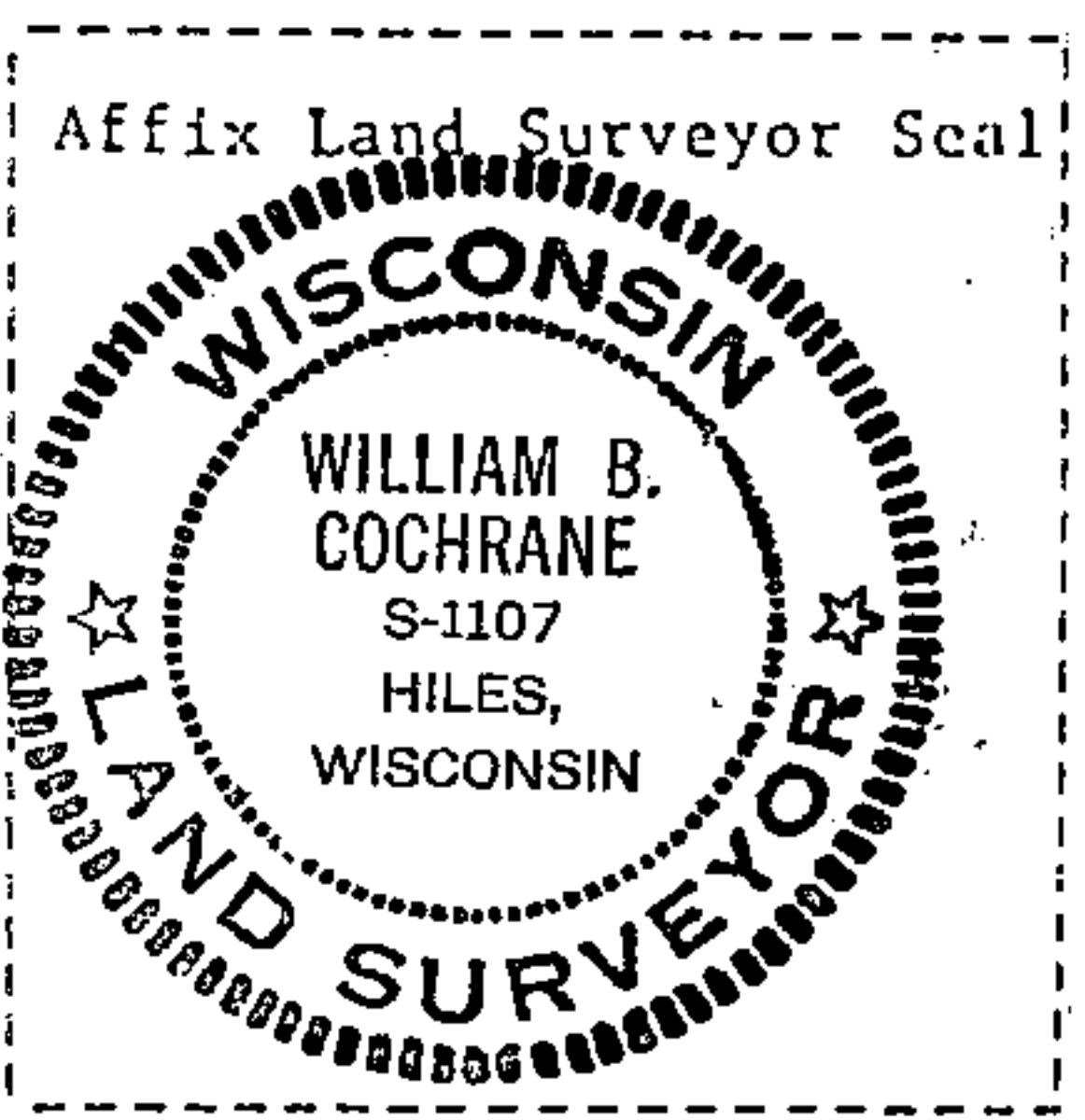
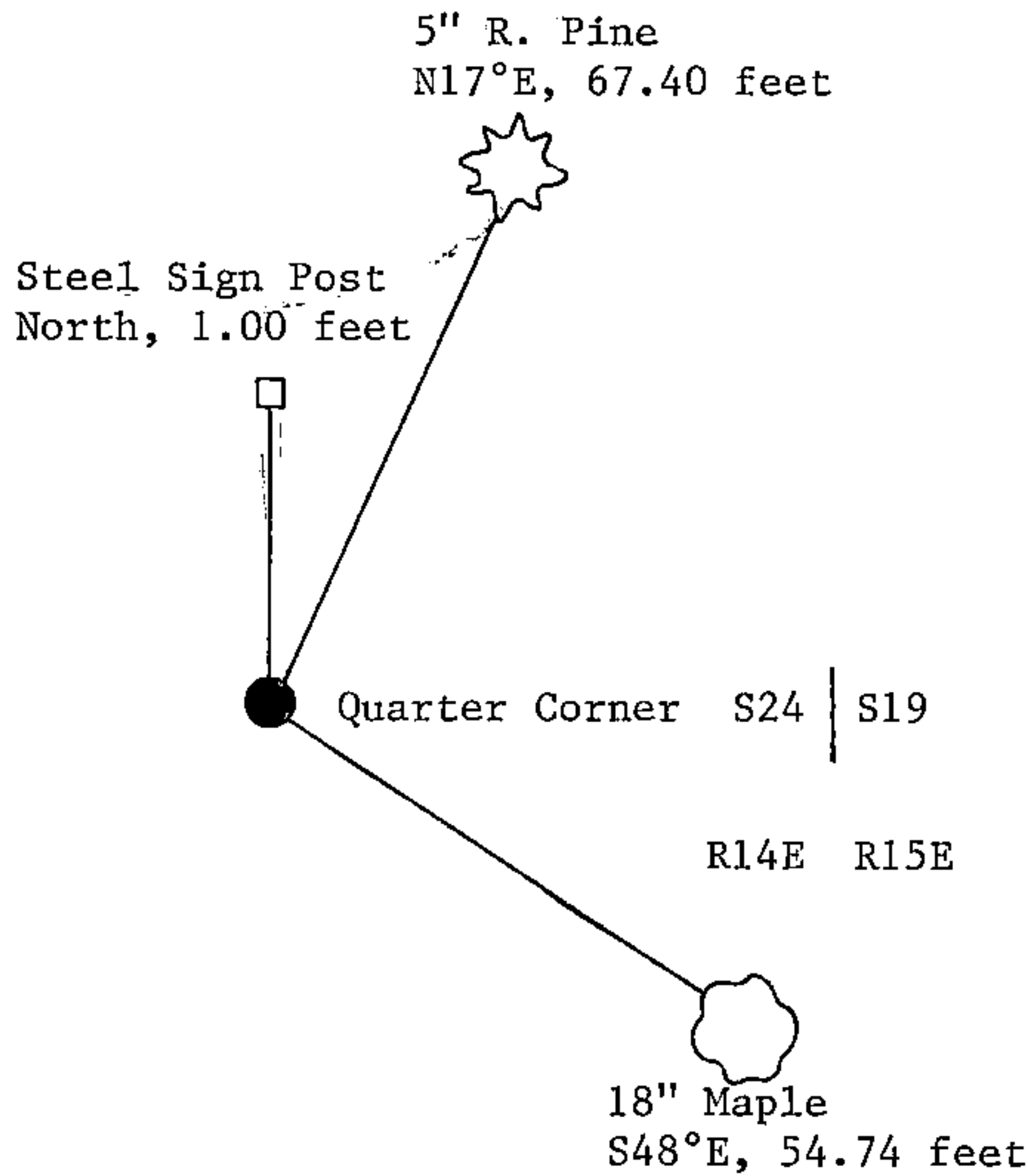
(e) Describe any material discrepancy between the location of the corner as restored or reestablished and the location of that corner as previously restored or reestablished by distance and direction. Show the discrepancy on the plan view drawing under (d), above. Show the distances between the corner as previously restored or reestablished and (1) the corner as restored or reestablished, and (2) to at least 2 of the witness monuments shown on the drawing in (d), above.

See drawing below.

(f) Was the corner restored through acceptance of (1) an obliterated evidence location, or, (2) a found perpetuated location?

Restored from accepted evidence.

(g&h) Was the corner reestablished through lost corner proportionate methods? If so, show the method, including the directions and distances to other public land survey corners used as evidence or used for proportioning in determining the corner location?



(i) I, William B. Cochrane  
(type or print name) certify that the corner location shown on this record was determined by me or under my direction and control and that this U.S. Public Land Survey Monument Record is correct and complete to the best of my knowledge and belief.

William B. Cochrane March 28, 1985  
Signature Date