

Stock No. 26273

Document Number 127900

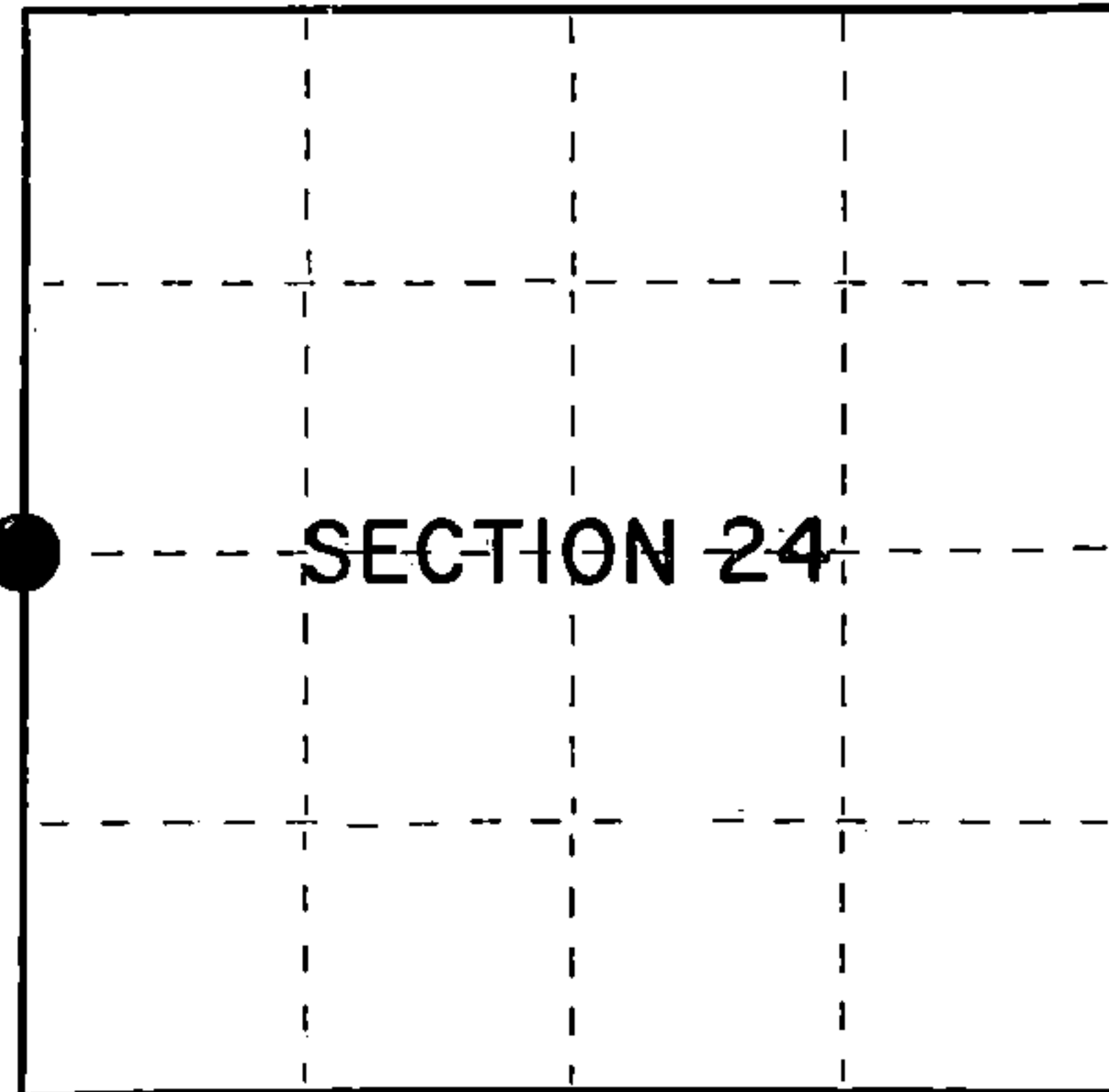
## U.S. PUBLIC LAND SURVEY MONUMENT RECORD

Index No. **P-21**

State of Wisconsin }  
 County of Forest } ss.

I, William B. Cochrane, do hereby  
 certify that on the 19th day  
 of September, 1983, I found  
 evidence of the West Quarter  
 corner of Section 24  
 Township 38, North, Range  
14 East, Fourth Principal Meridian,  
 as described hereon; and that from this evidence  
 I established a new monument and accessories  
 as described hereon to perpetuate the original  
 location of this corner.

Resident witnesses:

David Brownell

○ = Corner monument restored.

## History of original corner establishment:

Original Government Survey in 1865 by H.&J.L. Nowlin. North between Sections 23  
 and 24, 40.00 chains, set Quarter Corner post to Sections 23 and 24, from which the  
 following bear:

Sugar	24"	N85°E	6 lks.
Sugar	8"	S43°W	12 lks.

## Description of corner evidence found:

No original corner evidence was recovered.

The corner position falls in Hwy 139, and was restored using the measurements as shown  
 on the State Highway Division Job #7115. Plan dated 9/2/47.

## Description of monument and accessories I established to perpetuate the original location of this corner.

At the restored corner position, set a 2½" diameter aluminum pipe monument, 3 feet  
 long, 30" in the ground, with an aluminum cap stamped: T38N R14E, 1/4, S23, S24, 1983,  
 S-1107. Blazed and scribed the following new bearing trees:

R. Pine	9"	S82°W	52.03 feet
Maple	7"	N63°W	42.32 feet
Steel Sign Post		West	0.50 feet

Dated at Hiles, Wis., this 26th day of March, 1985

Signature William B. Cochrane Title Land Surveyor Registration No. S-1107  
 (County Surveyor, Registered Land Surveyor, or other duly authorized official)

Office of Register of Deeds, County of Forest  
 I hereby certify that the within  
 instrument was filed in this office for record on the 24th day of April, 1985  
 at 1:00 o'clock P. M.

Paul Ascherbrenner  
 (Register of Deeds)

By \_\_\_\_\_ Deputy

43814232000

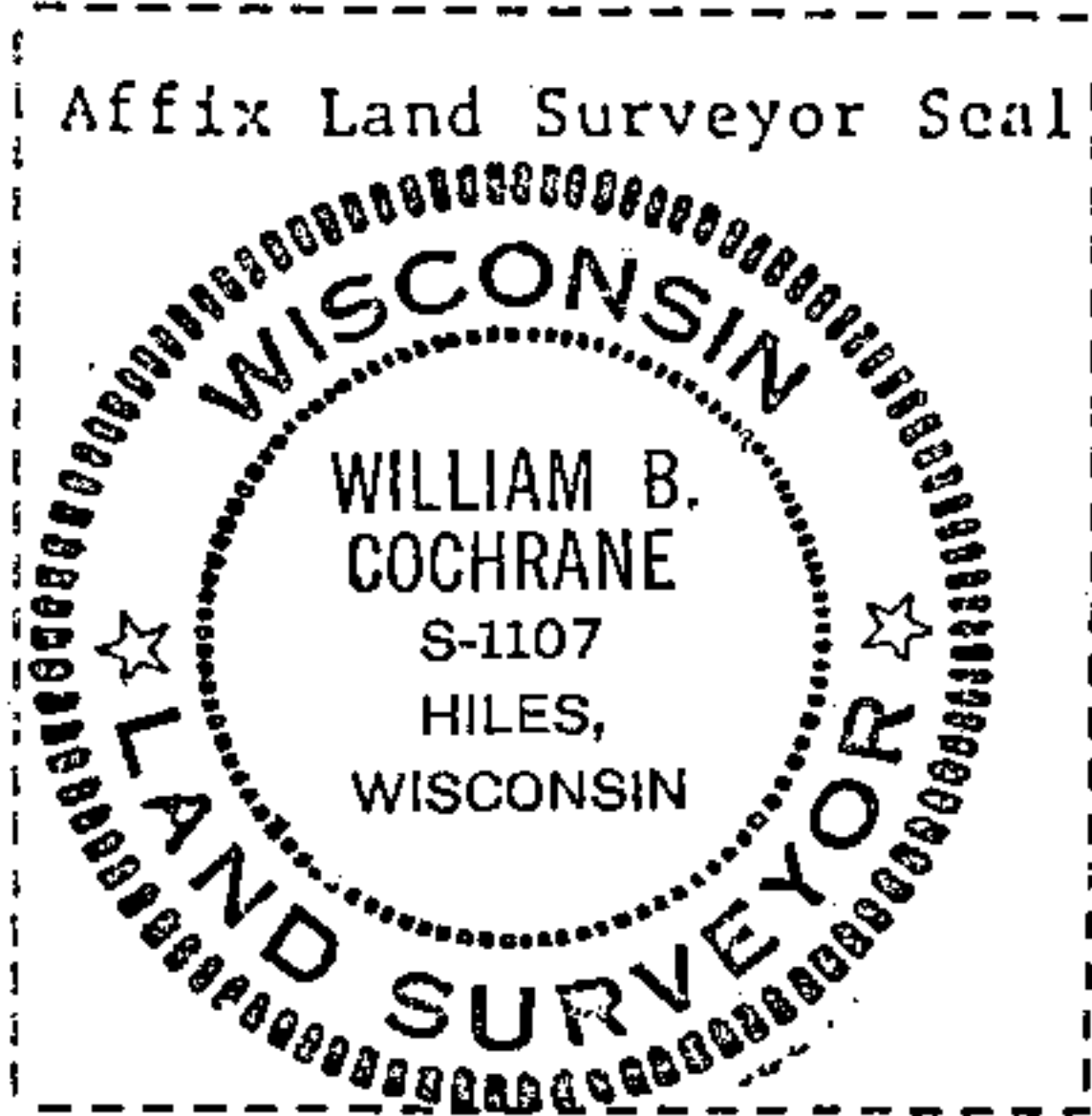
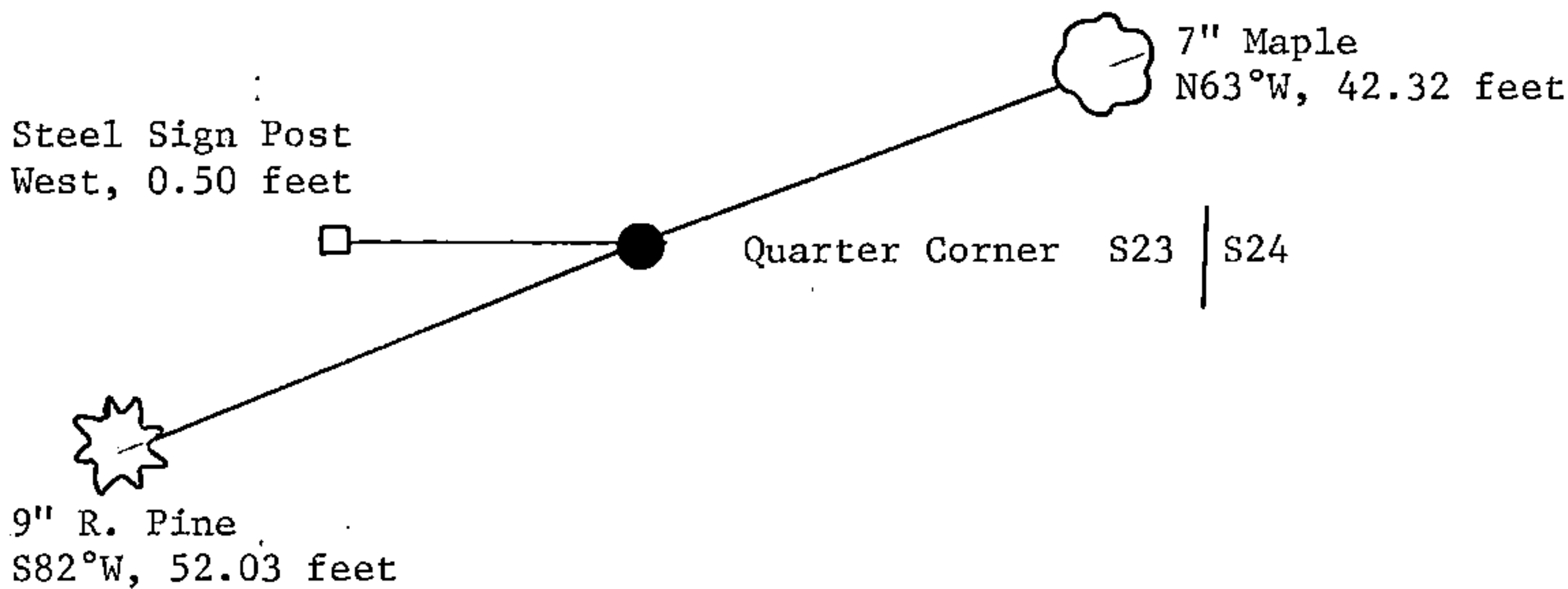
(e) Describe any material discrepancy between the location of the corner as restored or reestablished and the location of that corner as previously restored or reestablished by distance and direction. Show the discrepancy on the plan view drawing under (d), above. Show the distances between the corner as previously restored or reestablished and (1) the corner as restored or reestablished, and (2) to at least 2 of the witness monuments shown on the drawing in (d), above.

See drawing below.

(f) Was the corner restored through acceptance of (1) an obliterated evidence location, or, (2) a found perpetuated location?

Restored from accepted evidence.

(g&h) Was the corner reestablished through lost corner proportionate methods? If so, show the method, including the directions and distances to other public land survey corners used as evidence or used for proportioning in determining the corner location?



(i) I, William B. Cochrane  
(type or print name) certify that the corner location shown on this record was determined by me or under my direction and control and that this U.S. Public Land Survey Monument Record is correct and complete to the best of my knowledge and belief.

William B. Cochrane  
Signature

March 26, 1985  
Date