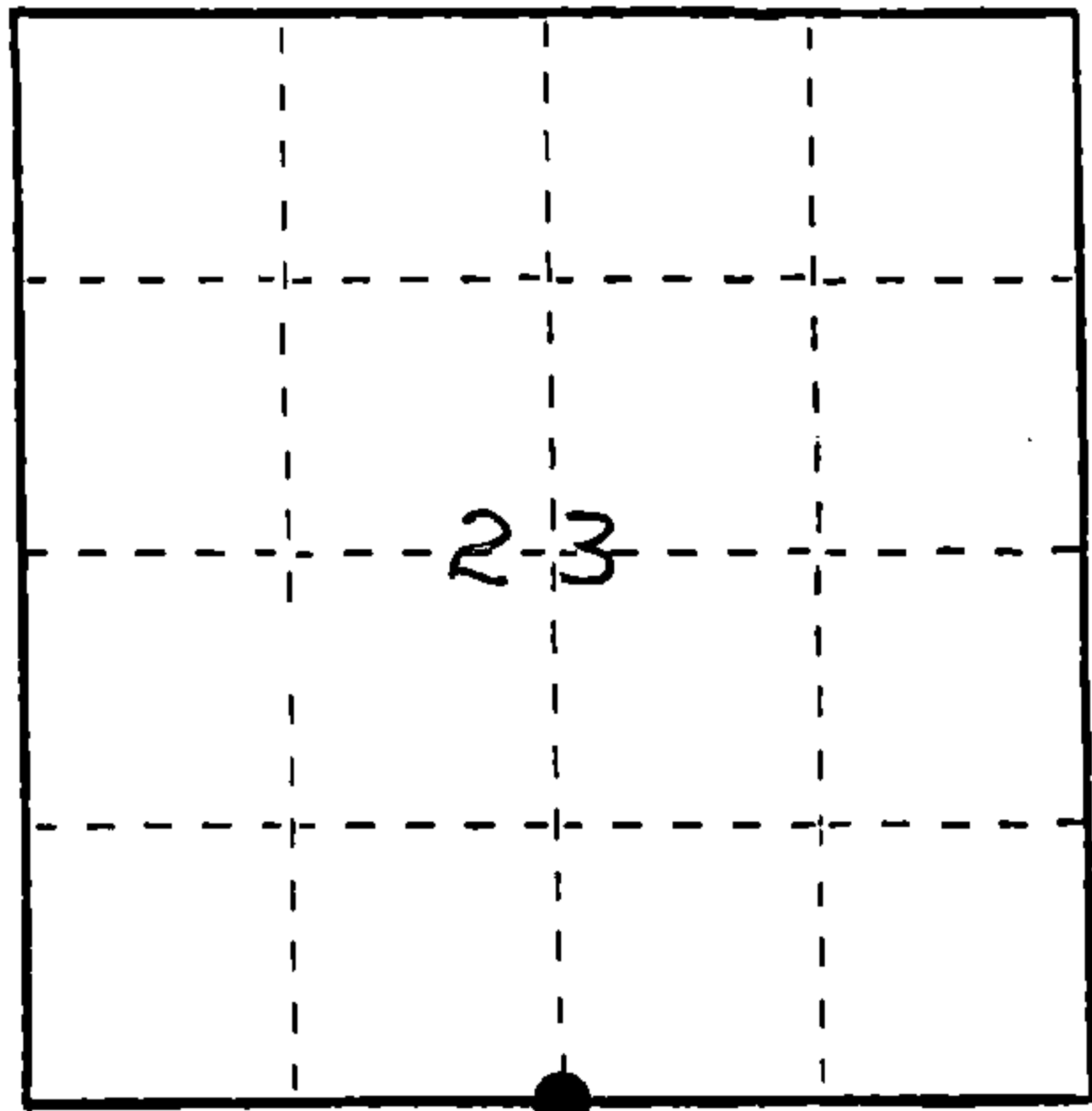


U. S. PUBLIC LAND SURVEY MONUMENT RECORD

INSTRUCTIONS: This record shall show the location of the corner and shall include all of the following nine elements (a through i).

- (a) Identify the corner by reference to the U.S. public land survey system.
- = Corner monument restored.

South One Quarter Corner of Section 23, T38N, R14E



REGISTER'S OFFICE }
 Forest County, Wis. }
 Received for record this 5th day
 of November A.D., 1986 at
3:50 o'clock P.M. and recorded
 in Vol. CORNER RESTORATIONS
 page R-19
Paul Aschenbrenner
 Register of Deeds

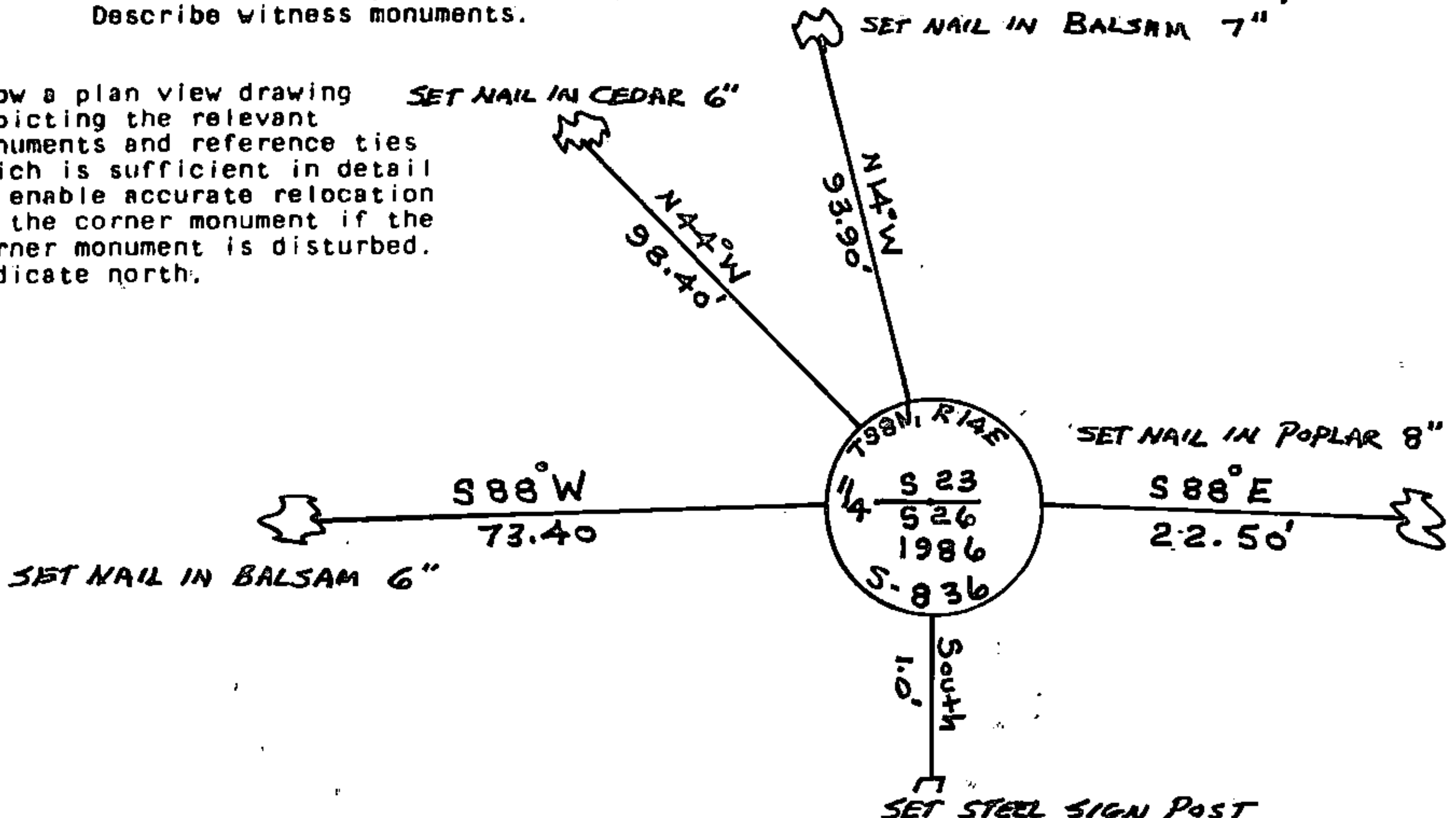
- (b) Describe any record evidence, monument evidence, occupational evidence, testimonial evidence or any other material evidence you considered, and whether the monument was found or placed.

In 1858 James L. Nowlin set wood post with the following BTs: Cedar, 6", S46°W, 15 links; Tamarack, 12", N68°E, 18 links.

Found squared post with burn marks laying over in swamp also found tip in good condition. Round fence post 6 feet long with sharpened point lating down, and pieces of old barbed wire fence East. N.H. Smith was at this corner in 1905 and stated both original trees blown over. In 1934 Stewart C. Morey was at this corner and he found wooden stake and stated stake was adjacent to an old fence, 7 chains due West of the railroad. Put poster on stake next to the one quarter stake. Replaced squared post (tip) with 2" diameter aluminum pipe 5 feet long with 3" diameter aluminum tablet stamped to identify corner.

- (c) In the plan view drawing below, provide reference ties to at least 4 witness monuments, or, if the location is within a municipality, to at least 2 witness monuments. (Witness monuments shall be made of concrete, natural stone, iron or other equally durable material.) Describe witness monuments.

- (d) Show a plan view drawing depicting the relevant monuments and reference ties which is sufficient in detail to enable accurate relocation of the corner monument if the corner monument is disturbed. Indicate north.



(e) Describe any material discrepancy between the location of the corner as restored or reestablished and the location of that corner as previously restored or reestablished by distance and direction. Show the discrepancy on the plan view drawing under (d), above. Show the distances between the corner as previously restored or reestablished and (1) the corner as restored or reestablished, and (2) to at least 2 of the witness monuments shown on the drawing in (d), above.

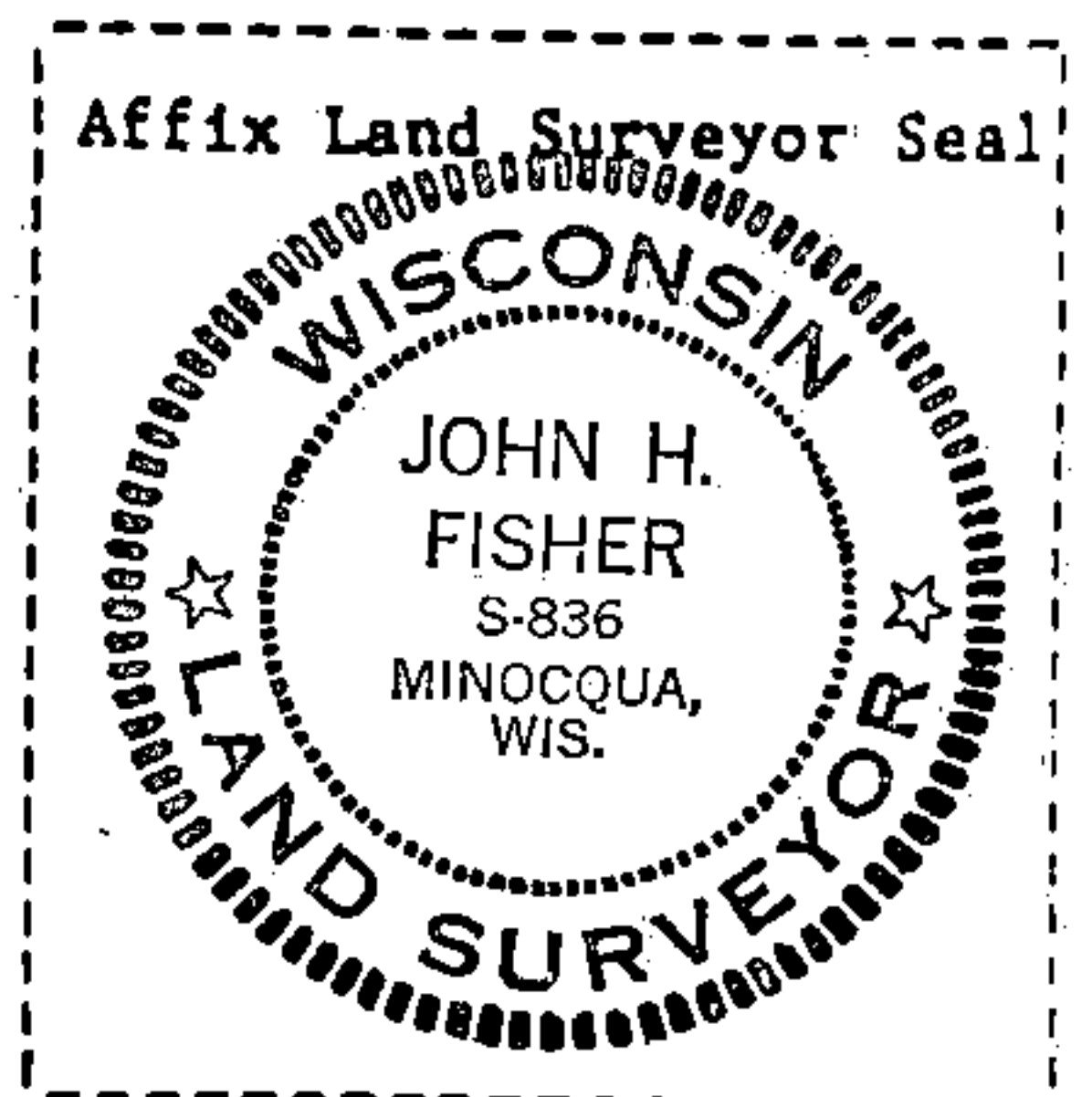
None

(f) Was the corner restored through acceptance of (1) an obliterated evidence location, or, (2) a found perpetuated location?

Through acceptance of a perpetuated location found.

(g&h) Was the corner reestablished through lost corner proportionate methods? If so, show the method, including the directions and distances to other public land survey corners used as evidence or used for proportioning in determining the corner location?

NO



(1) I, John H. Fisher
(type or print name) certify that the corner location shown on this record was determined by me or under my direction and control and that this U.S. Public Land Survey Monument Record is correct and complete to the best of my knowledge and belief.

John H. Fisher
Signature

10/30/86
Date