

U.S. PUBLIC LAND SURVEY MONUMENT RECORD

Index No. **R-21**

State of Wisconsin }
 County of Forest } ss.

I, William B. Cochrane, do hereby certify that on the 19th day of September, 1983, I found evidence of the Southwest Section corner of Section 24 Township 38, North, Range 14 East, Fourth Principal Meridian, as described hereon; and that from this evidence I established a new monument and accessories as described hereon to perpetuate the original location of this corner.

Resident witnesses:

David Brownell

History of original corner establishment:

Original Government Survey in 1865 by H.&J.L. Nowlin. North between Sections 25 and 26, 80.00 chains, set Section Corner post to Sections 23, 24, 25, and 26, from which the following bear:

Linden	12"	N79°E	9 lks.
Birch	12"	N31°W	36 lks.

Description of corner evidence found:

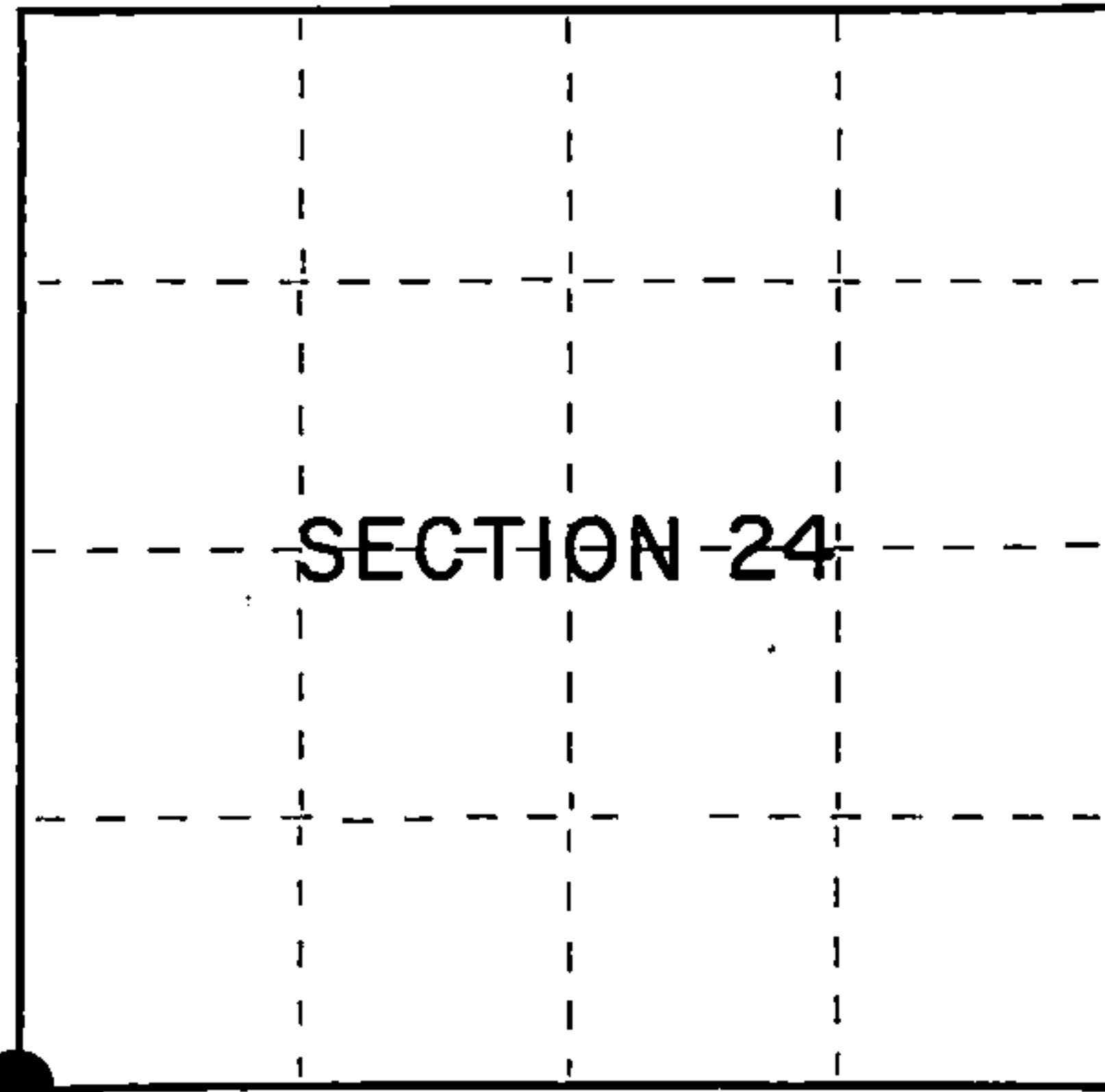
No original corner evidence was recovered.

Corner position falls in Hwy 139, and was restored using the measurements as shown on the State Highway Division Job #7115. Plan dated 9/2/47.

Description of monument and accessories I established to perpetuate the original location of this corner.

At the restored corner position, set a 2½" diameter aluminum pipe monument, 3 feet long, 30 inches in the ground, with an aluminum cap stamped: T38N R14E, S23, S24, S25 S26, 1983, S-1107, from which the following new blazed and scribed bearing trees bear:

Basswood	14"	S63°E	83.20 feet
Power Pole #73-2567		S20°W	117.45 feet
Steel Sign Post		West	1.00 feet



○ = Corner monument restored.

Dated at Hiles, Wis., this 26th day of March, 1985

Signature William B. Cochrane Title Land Surveyor Registration No. S-1107
 (County Surveyor, Registered Land Surveyor, or other duly authorized official)

Office of Register of Deeds, County of Forest, I hereby certify that the within instrument was filed in this office for record on the 24th day of April, 1985 at 1:00 o'clock P. M.

Paul Aschenbrenner
 (Register of Deeds)

By _____ Deputy

FORM NO. 985-A
 H.C. Miller Company

Stock No. 26273

Document Number **127902**

4381423 0600

(e) Describe any material discrepancy between the location of the corner as restored or reestablished and the location of that corner as previously restored or reestablished by distance and direction. Show the discrepancy on the plan view drawing under (d), above. Show the distances between the corner as previously restored or reestablished and (1) the corner as restored or reestablished, and (2) to at least 2 of the witness monuments shown on the drawing in (d), above.

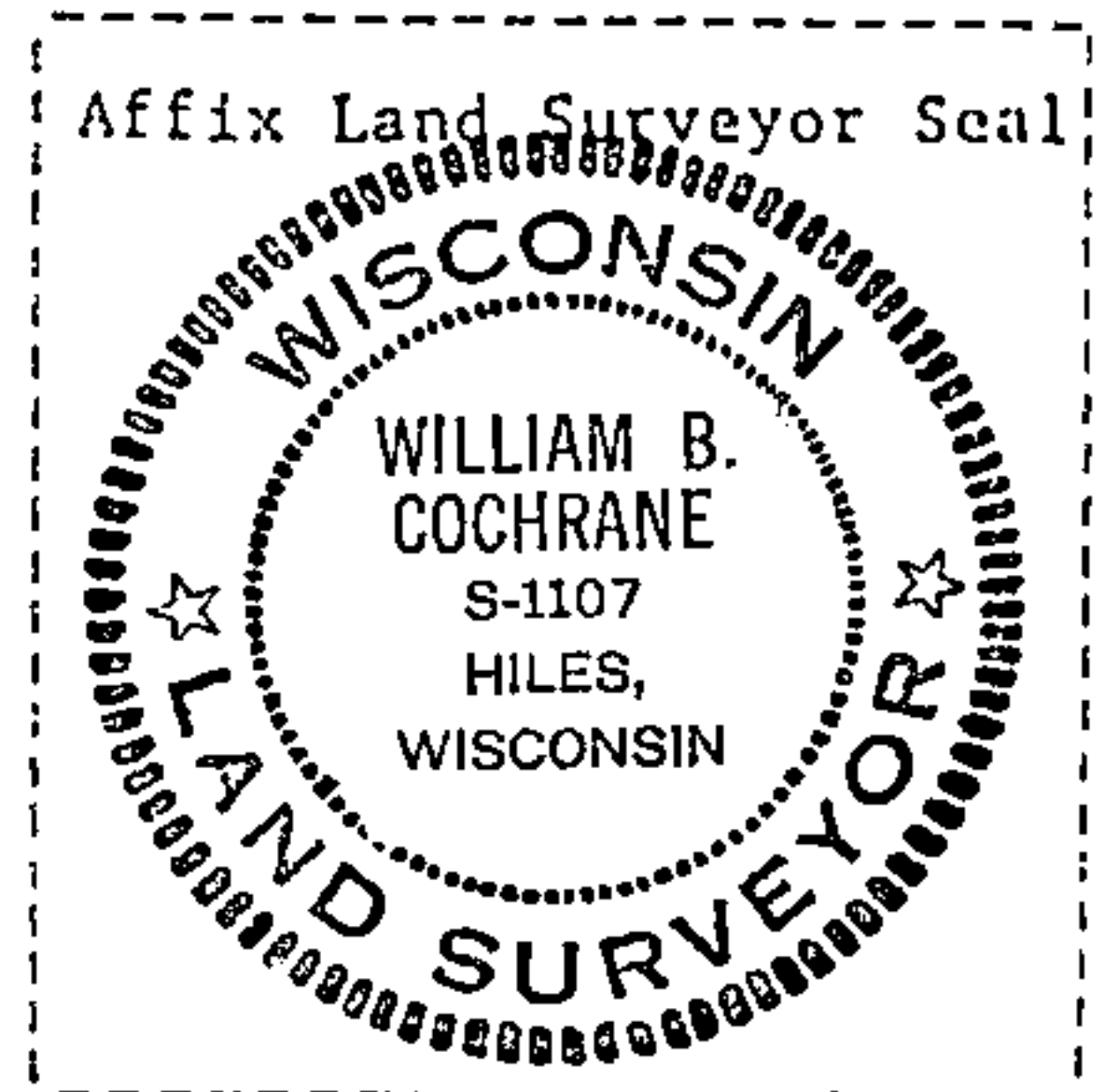
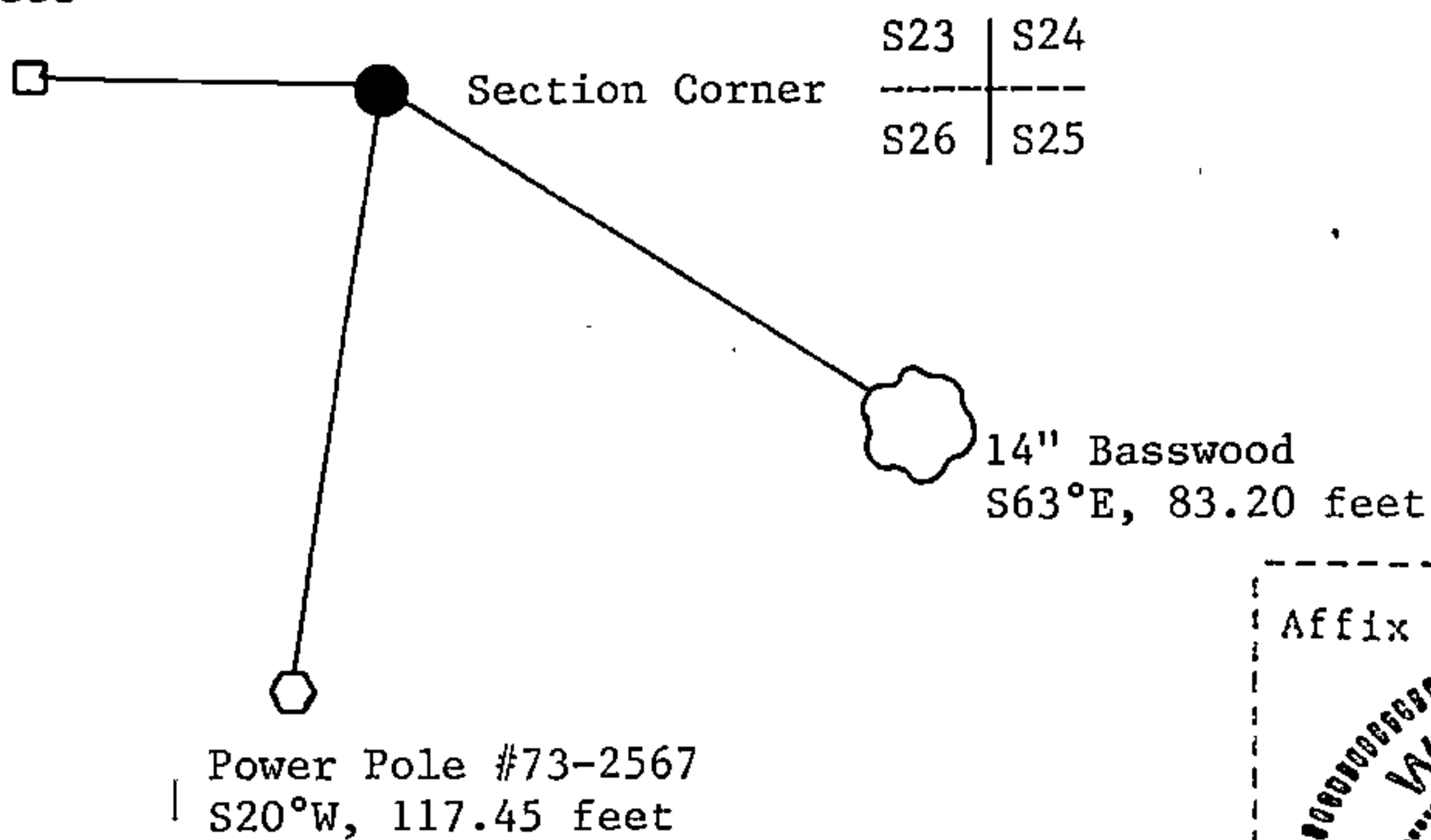
See drawing below.

(f) Was the corner restored through acceptance of (1) an obliterated evidence location, or, (2) a found perpetuated location?

Restored from accepted evidence.

(g&h) Was the corner reestablished through lost corner proportionate methods? If so, show the method, including the directions and distances to other public land survey corners used as evidence or used for proportioning in determining the corner location?

Steel Sign Post
West, 1.00 feet



(i) I, William B. Cochrane
(type or print name) certify that the corner location shown on this record was determined by me or under my direction and control and that this U.S. Public Land Survey Monument Record is correct and complete to the best of my knowledge and belief.

William B. Cochrane
Signature

March 26, 1985
Date