

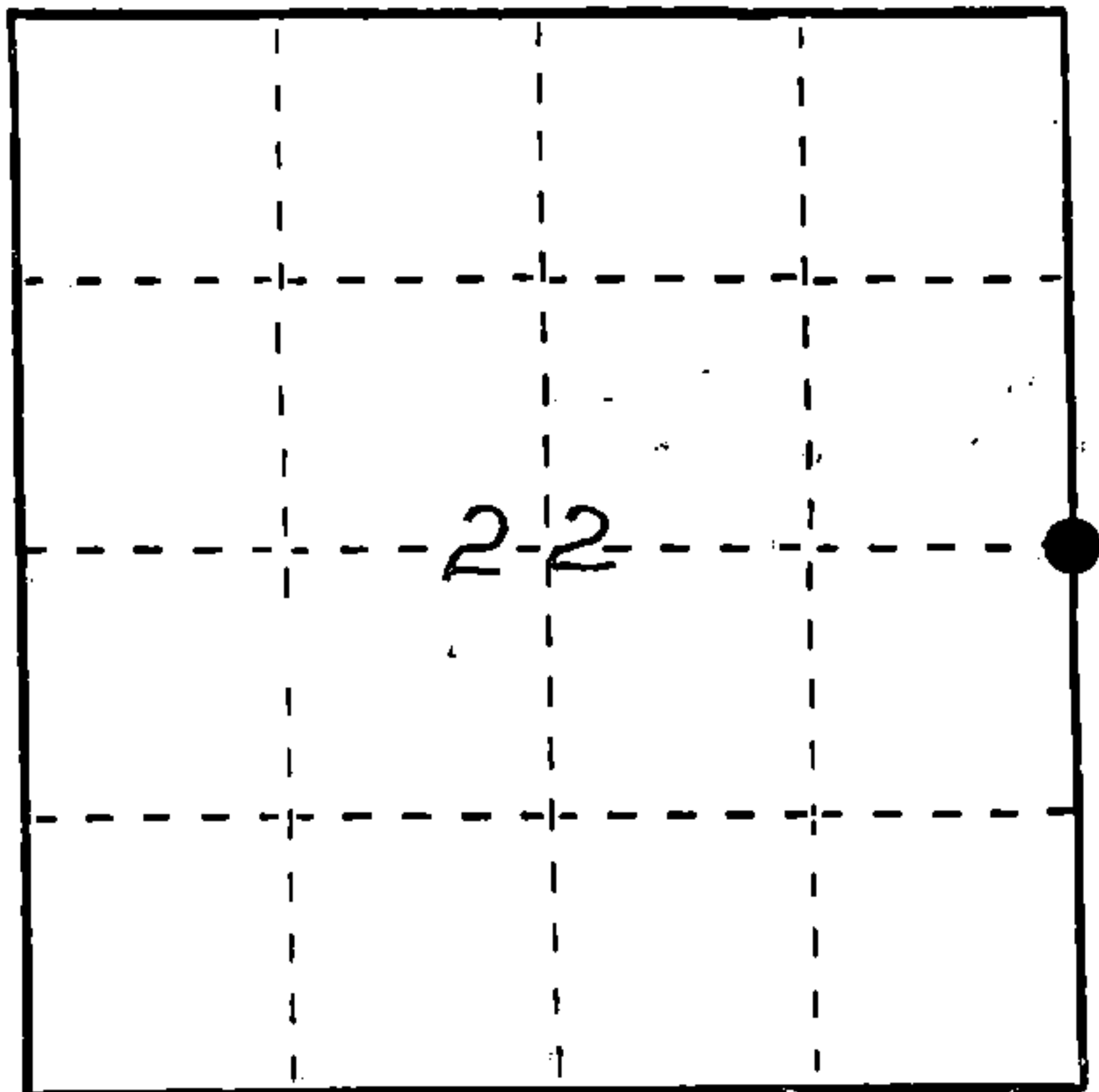
U. S. PUBLIC LAND SURVEY MONUMENT RECORD

INSTRUCTIONS: This record shall show the location of the corner and shall include all of the following nine elements (a through i).

- (a) Identify the corner by reference to the U.S. public land survey system.
- = Corner monument restored.

East One Quarter of
Section 22, T38N, R14E

REGISTER'S OFFICE
Forest County, Wis.
Received for record this 5th day
of November A.D., 1986 at
3:50 o'clock P.M. and recorded
in Vol. CORNER RESTORATIONS
page P-17
Paul Aschardrenner
Register of Deeds



- (b) Describe any record evidence, monument evidence, occupational evidence, testimonial evidence or any other material evidence you considered, and whether the monument was found or placed.

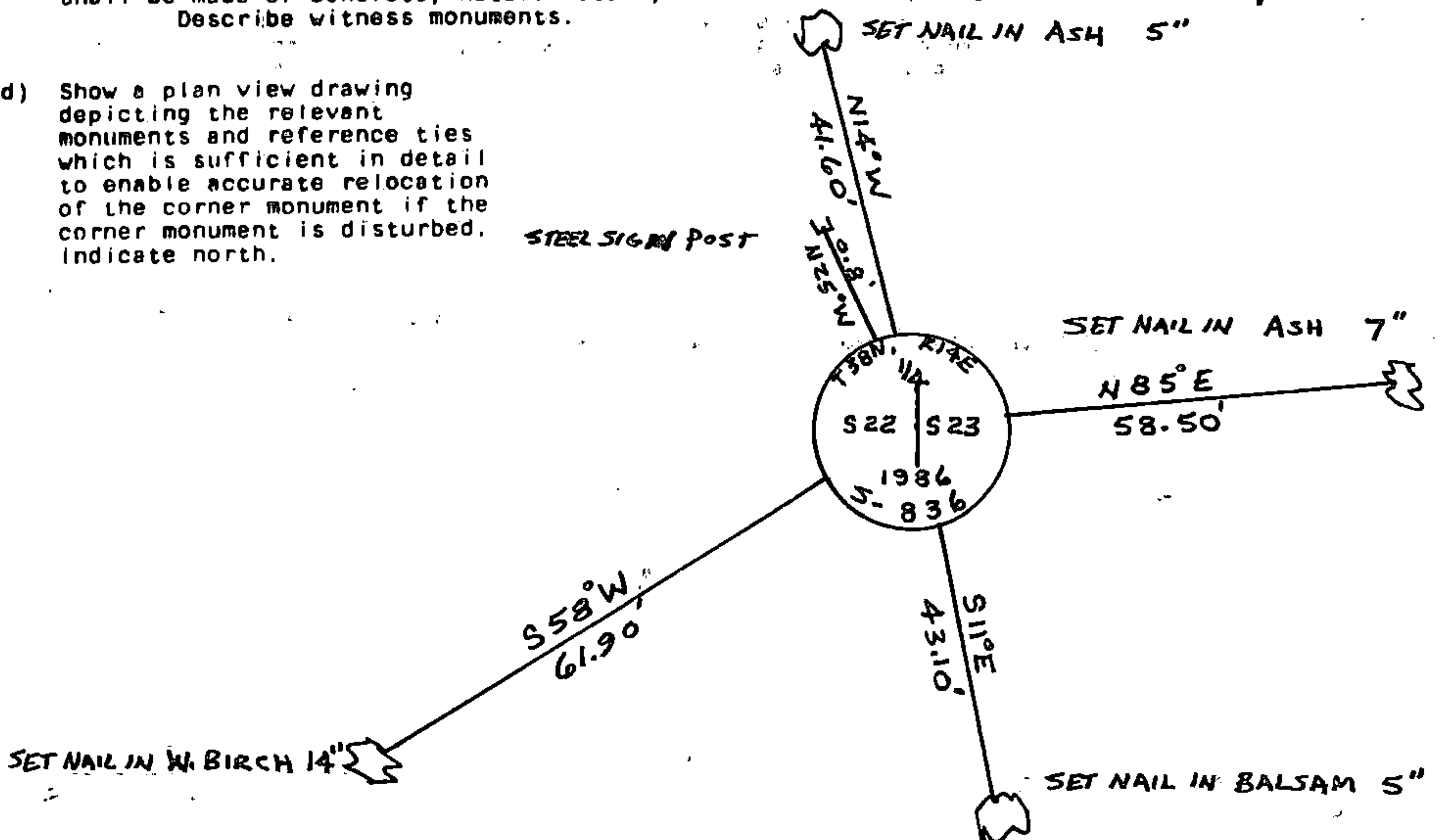
In 1865 James L. Nowlin set wood post with the following BTs: Cedar, 12", S40°E, 16 links; Spruce 8", N44°W, 20 links.

Found 1-1/4" iron pipe next to tip of old rotten post, found hackmack and nail on Cedar tipped over N81°W, 23.1 feet as called for in 1935 by Waldemar Encblom. He also states this one quarter corner is right along a creek. Corner we find is 15 feet north of small creek.

Replaced 1-1/4" iron pipe with 2" diameter pipe 5 feet long with 3" diameter aluminum tablet stamped to identify corner.

- (c) In the plan view drawing below, provide reference ties to at least 4 witness monuments, or, if the location is within a municipality, to at least 2 witness monuments. (Witness monuments shall be made of concrete, natural stone, iron or other equally durable material.) Describe witness monuments.

- (d) Show a plan view drawing depicting the relevant monuments and reference ties which is sufficient in detail to enable accurate relocation of the corner monument if the corner monument is disturbed. Indicate north.



- (e) Describe any material discrepancy between the location of the corner as restored or reestablished and the location of that corner as previously restored or reestablished by distance and direction. Show the discrepancy on the plan view drawing under (d), above. Show the distances between the corner as previously restored or reestablished and (1) the corner as restored or reestablished, and (2) to at least 2 of the witness monuments shown on the drawing in (d), above.

NA

- (f) Was the corner restored through acceptance of (1) an obliterated evidence location, or, (2) a found perpetuated location?

Through acceptance of a perpetuated location found.

- (g&h) Was the corner reestablished through lost corner proportionate methods? If so, show the method, including the directions and distances to other public land survey corners used as evidence or used for proportioning in determining the corner location?

NO

- (i) I, John H. Fisher
(type or print name) certify that the corner location shown on this record was determined by me or under my direction and control and that this U.S. Public Land Survey Monument Record is correct and complete to the best of my knowledge and belief.

John H. Fisher
Signature

10/30/86
Date

