

CERTIFIED LAND CORNER RESTORATION
U.S. PUBLIC LAND SURVEY RECORD

Index No. E-3
R 3

State of Wisconsin }
County of Forest } ss.

History of original corner establishment:

Original corner established by James L. Nowlin deputy surveyor in 1864 from which
fir 14' bears N50E 5 lks and fir 10" S45W 5 lks.

I Glen Barker, do hereby
certify that on the 4th day
of January, 1985, I found
~~established~~ Quarter
~~evidence of the~~ Sections 19 & 30
corner of 38
Township 38, North, Range
14 East, Fourth Principal Meridian,
as described hereon; and that from this evidence
I established a new monument and accessories
as described hereon to perpetuate the original
location of this corner.

Description of corner evidence found:

Re-established quarter section corner by proportionate method.
Total distance from section corner 24-25-19-30 T38N R13 & 14E to section
corner 19-20-29-30, T38N R14E is 5412.03'.
Set quarter corner 2806.96' of NW section corner and 2605.07' of NE section
corner on line between the two.

Resident witnesses:

N. Spiess

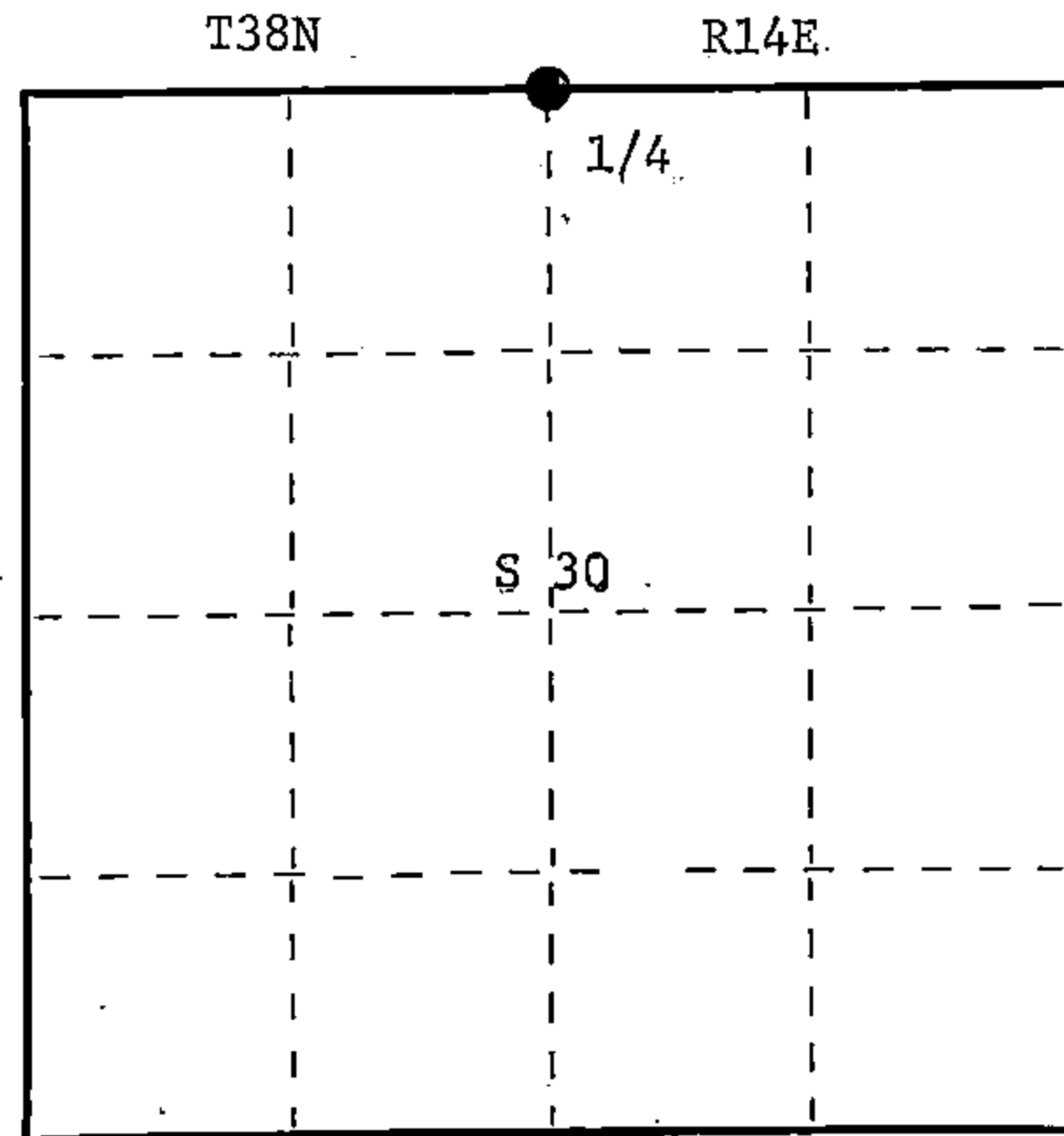
R. Lundt

Description of monument and accessories I established to perpetuate the original location of this corner.

Set a 2½" A-1 Federal-Forest County monument cap stamped: T38N R14E
Monument projects 6" above ground.

Marked NBTs:

| | | | |
|------------------|------|--------|----------|
| Yellow birch 14" | N72W | 72.07' | 1/4 S 19 |
| Spruce 14" | S48W | 72.63' | S 30 |
| Sugar 12" | N86E | 13.89' | 1985 |
| Sugar 6" | N90W | 45.69' | S1682 |



○ = Corner monument restored.

Dated at Rhineland, Wis., this 4th day of February, 1985.

Signature Glen Barker Title Registered Land Surveyor Registration No. 1682
(County Surveyor, Registered Land Surveyor, or other duly authorized official)

Office of Register of Deeds, County of Forest, I hereby certify that the within
instrument was filed in this office for record on the 22nd day of February, 1985
at 2:15 o'clock P. M.

Paul Aschenbrenner
(Register of Deeds)

By _____ Deputy

Document Number 127502

FORM 985 R. G. MILLER CO., MILWAUKEE

438/419 0020

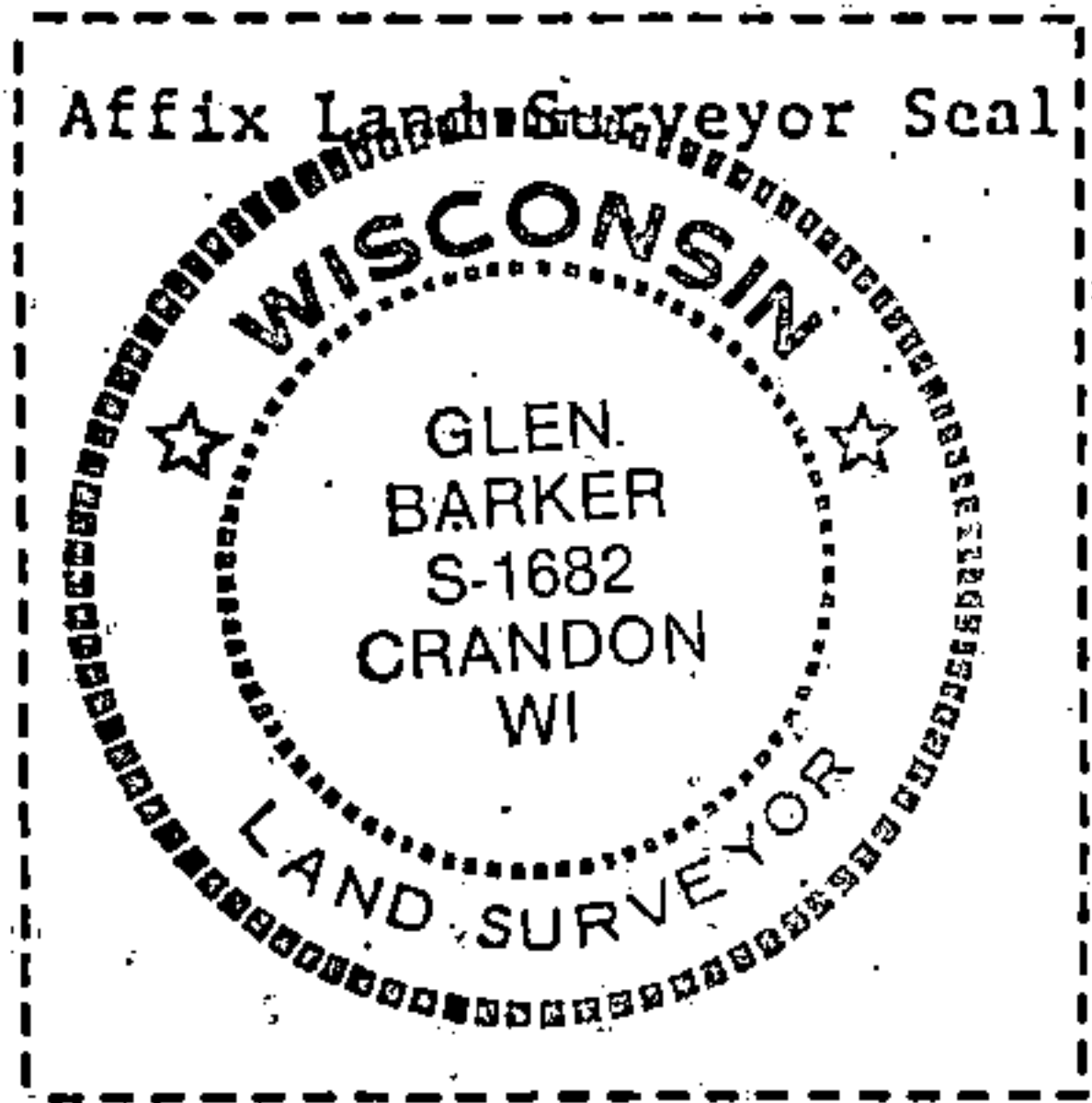
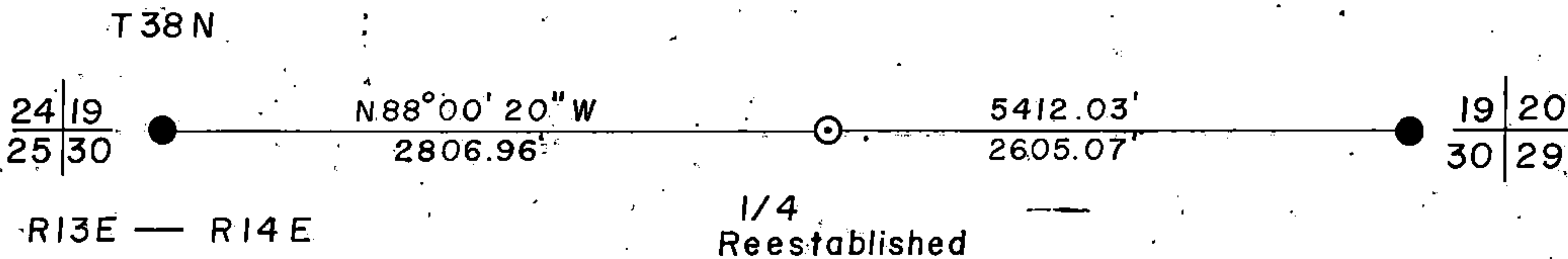
(d) Describe any material discrepancy between the location of the corner as restored or reestablished and the location of that corner as previously restored or reestablished by distance and direction. Show the discrepancy on the plan view drawing under (d), above. Show the distances between the corner as previously restored or reestablished and (1) the corner as restored or reestablished, and (2) to at least 2 of the witness monuments shown on the drawing in (d), above.

See drawing below

(f) Was the corner restored through acceptance of (1) an obliterated evidence location, or, (2) a found perpetuated location?

(g&h) Was the corner reestablished through lost corner proportionate methods? If so, show the method, including the directions and distances to other public land survey corners used as evidence or used for proportioning in determining the corner location?

Proportionate method



(i) I, Glen Barker
 (type or print name) certify that the corner location shown on this record was determined by me or under my direction and control and that this U.S. Public Land Survey Monument Record is correct and complete to the best of my knowledge and belief.

Signature

Date

2/4/85